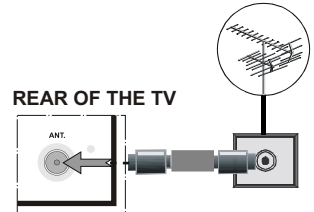


1 Insert the batteries into the Remote Control

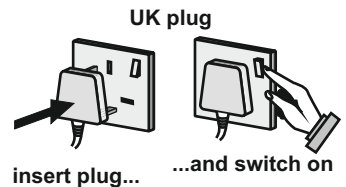
Lift the cover on the back of the remote gently. Insert two **AAA** batteries. Make sure the (+) and (-) signs match (observe correct polarity). Place the cover back on.



2 Connect the antenna to your TV



3 Connect the TV to the mains socket



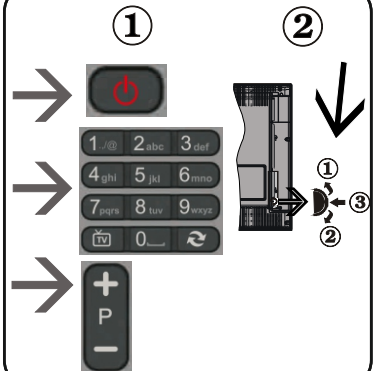
4 To switch the TV on

1. Connect the power cord to the 220-240V AC, 50 Hz. Then the standby LED lights up.

To switch on the TV from standby mode either:

2. Press the "⏻" button, **P/CH+** / **P/CH-** or a numeric button on the remote control or;
3. Press the control switch located on the left side of the TV.

By either method the TV will switch on.



5 HDMI input

PLEASE ENSURE BOTH UNITS ARE SWITCHED OFF BEFORE CONNECTING. Use a HDMI to HDMI cable to connect the two units together. To select the HDMI input, press the “**SOURCE**” button on the remote control. Each time it is pressed the on-screen menu confirms your selection.



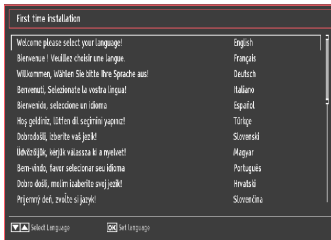
To HDMI connection on the device



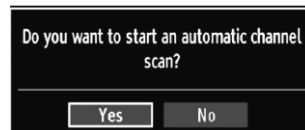
6 Start Auto Setup procedure

Important note: Ensure that the aerial is connected and a Common Interface module is not inserted before switching on the TV for the first time installation. Do not insert a common interface module during the search process.

1. When the TV is turned on for the first time the language screen will be displayed. Select the desired language using **Up** or **Down** button and press **OK** to save and continue.
2. After setting the language, First Time Installation screen will be displayed. Use **Up/Down** and **Left/Right** buttons to set the desired options.



3. “Do you want to start automatic search?” message will be displayed on the screen. Select YES and press OK to continue. The TV will search for digital terrestrial broadcasts. After all the available stations are stored, Channel List will be displayed on the screen. If you like to sort channels, according to the LCN(*), please select “Yes” and then press OK. (*) LCN is the Logical Channel Number system that organizes available broadcasts in accordance with a recognizable channel sequence.



50345148