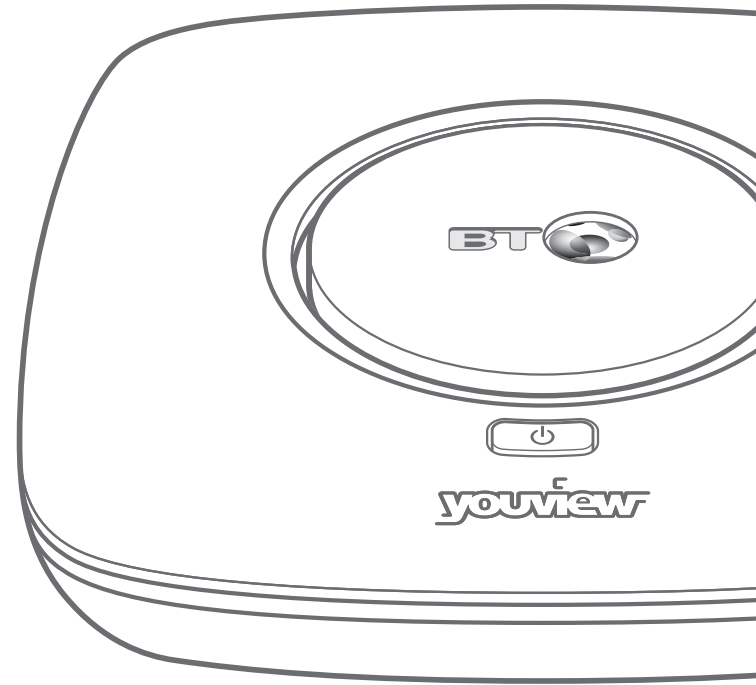




Quick Start Guide

Thank you
for choosing YouView from BT

Your broadband needs to be up and running before you set up your YouView box.





Quick start guide

In this guide is all you need to connect your YouView box and set up your YouView remote to control your TV.

Just follow the steps over the page.

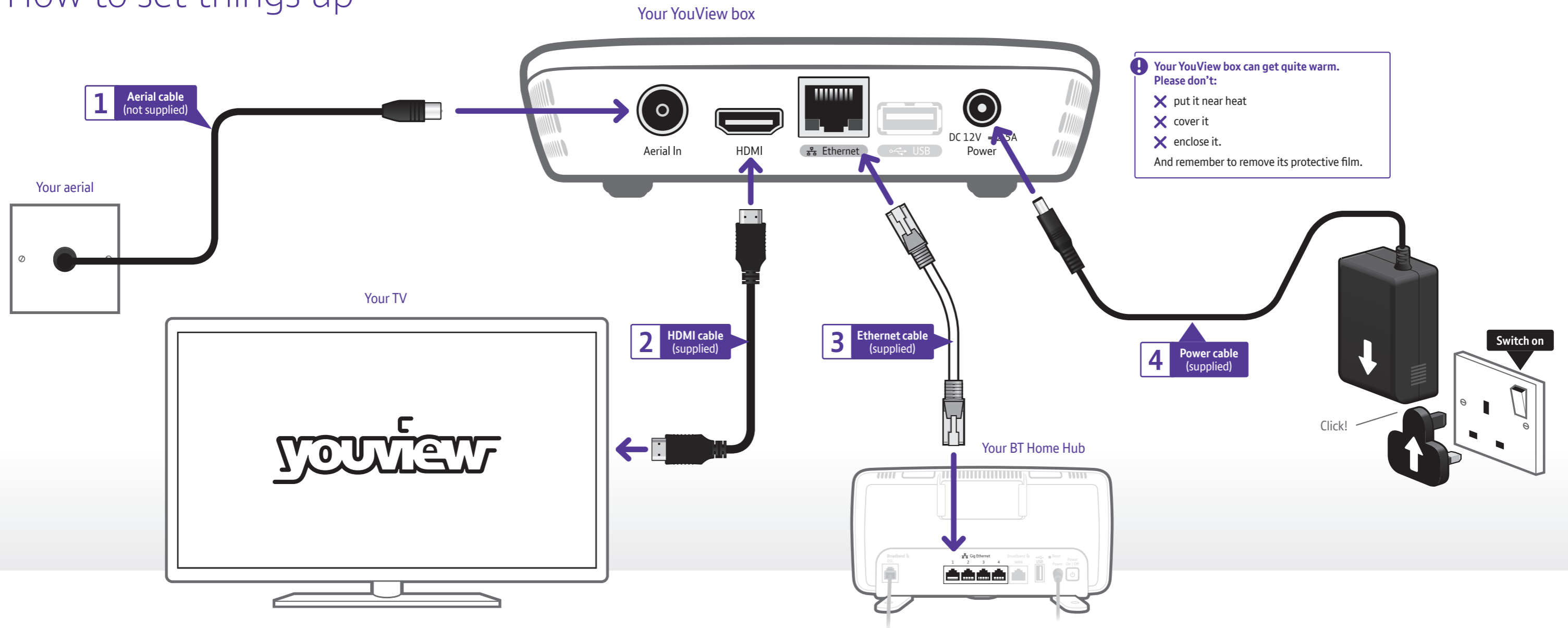
To find out more about using your YouView box, see your YouView User Guide.

 Need some help? No problem – go to bt.com/help/youview, or give us a call on 0800 111 4567.



Open out and turn over for set-up

How to set things up

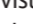


1 Connect your aerial

Your YouView box needs a working TV aerial. Unplug your aerial cable from your TV and plug it into **Aerial In** on your YouView box.

The Freeview channels you get depend on where you live and the quality of your aerial and cables. To check which digital channels you can get in your area, go to youview.com

2 Connect your TV

- 1 Plug your **HDMI cable** into the **HDMI socket** on your YouView box and the HDMI socket on your TV.
- 2 Turn on your TV and select the appropriate audio visual (AV) input  for the HDMI connection (some TVs do this automatically when you turn on your YouView box).

Using other equipment?

If you're using a home cinema amp or something similar, connect the HDMI cable to that instead of your TV. Then, to turn **ON** surround sound over HDMI, go to **Settings** on your YouView box, select **TV Signal & Quality**, then change the **HDMI Audio Format** to **Surround**.

3 Connect your broadband

If your Hub is close enough to your YouView box, use the **Ethernet cable** to connect your YouView box's **Ethernet socket** to one of your Hub's **Ethernet ports**.


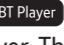
If your Hub is too far from your YouView box and you've ordered broadband extenders (Powerline adapters), see the user guide that came with them to set them up.

To find out more about broadband extenders, go to bt.com/help/tvpowerlines

Make sure that your broadband's working properly

If it isn't, see your Hub manual for help. Don't worry if your Hub looks different from the one above.

4 Turn it on and get started

- 1 Using the **power cable**, connect your YouView box to a **power socket** and switch it on (the box's power light will turn red).
- 2 Press  on the top of the box to turn it on (the box's power light will turn blue). To find out more about your box's lights, see your User Guide.
- 3 When you see a welcome message on your TV, follow its steps to finish set-up. Your default **YouView PIN** is **1234**. Remember to make a note if you change it.
- 4 Press  on your remote control and open up the BT Player. This will activate the player so you can access programmes that are part of your subscription as well as your rentals and purchases.
- 5 Now you're set up, turn this guide over to set your YouView remote to control your TV.

Eco mode

During set-up, when asked, set Eco mode to **LOW** to make your box start up faster.

Can't see the Welcome screen?

For help, see your User Guide.

Controlling your TV with your YouView remote

You can set your YouView remote to control both your YouView box and your TV. Here's how.

After putting the batteries in your remote, turn on your TV, then...

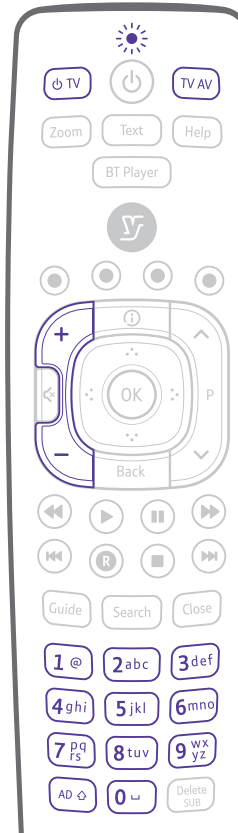
- 1 **Hold down** **TV** and **TV AV** until the blue light on the remote flashes three times.
- 2 When the flashing stops, enter the four-digit code for your brand of TV (see the table on the right). The blue light will flash another three times.
- 3 **Hold down** **TV** until your TV turns off. The blue light will blink while it turns off.
- 4 When your TV turns off, let go of **TV** and press it again – your TV should turn back on. Next try **Vol +**, **Vol -**.
- 5 If the volume control works, press **OK**. And that's it!
If it doesn't work, start again from Step 3.

i Using your remote to switch to another device

When switching to another device on your TV (e.g. a games console), press **TV AV** on your remote, then keep pressing **TV AV** (not the up or down arrows) to scroll through your choices (e.g. HDMI 1).

Maximum volume too low?

If you need to change the volume on your YouView+ box after setting up your remote, **hold down** **AD** while pressing **Vol +**, **Vol -**.



TV brand	Code
Goodmans	2037
Hitachi	2424
JVC	2788
LG	2992
Panasonic	3846
Philips	3951
Samsung	4483
Sharp	4848
Sony	4985
Toshiba	5523

If your brand of TV isn't listed here, you can find a full list of brands and codes at bt.com/help/remote

i Once you've set up your remote, you can:

- turn your TV on and off (standby) **TV**
- switch to another device **TV AV**
- adjust or mute the volume.



Offices worldwide

© British Telecommunications plc 2014
We're registered in England at 81 Newgate Street,
London EC1A 7AJ (company number 1800000).

Item code 080870 V1
Written and designed by The Art & Design Partnership
and Muse Publishing

All this information was correct as of September 2014.
See our terms and conditions at bt.com/terms.

All third party trademark rights are hereby acknowledged.

20007-00392 QSG/DBT2200(DF)/100GB

