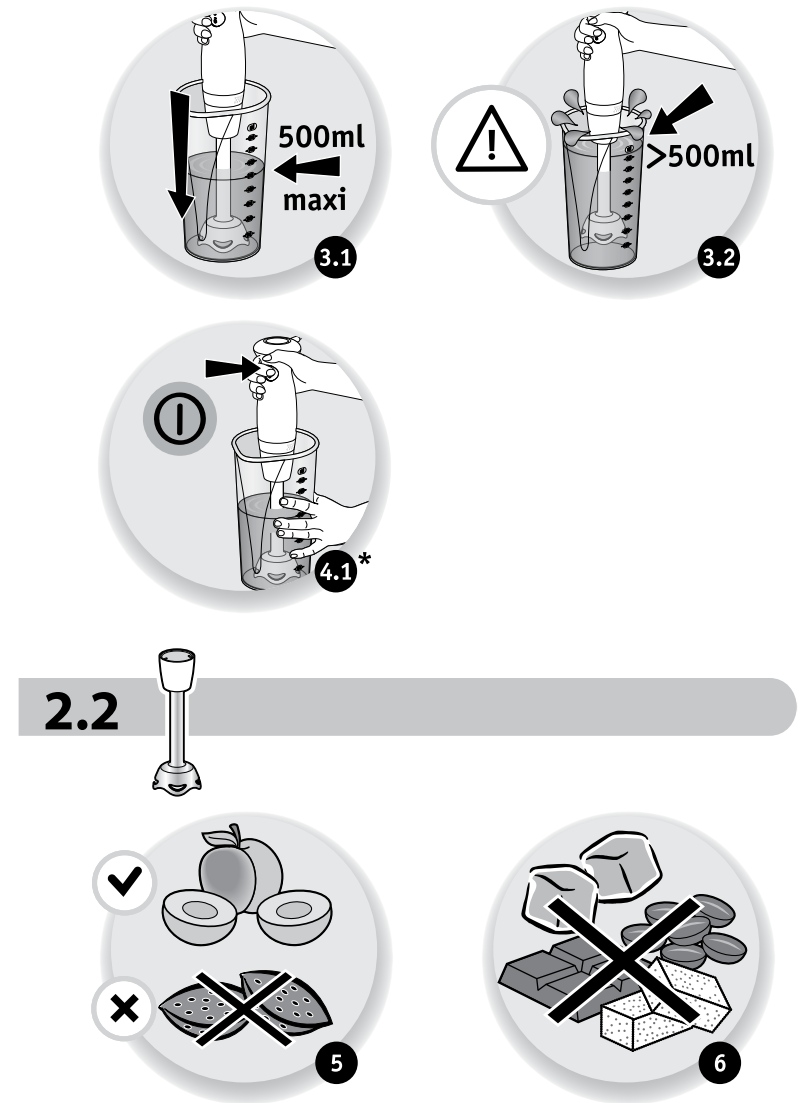
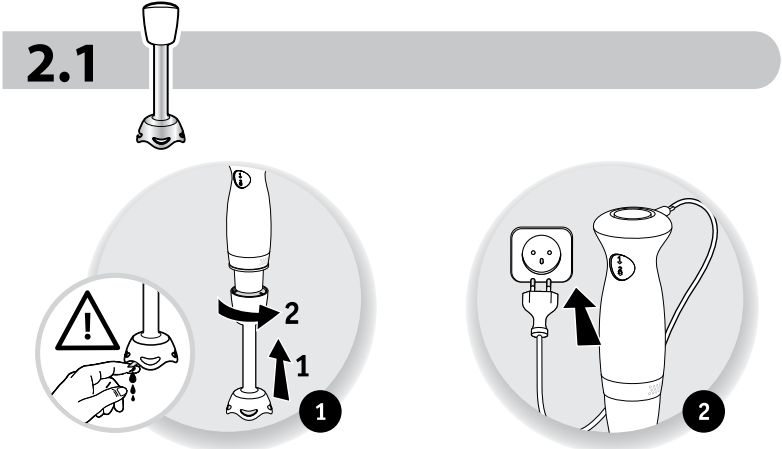
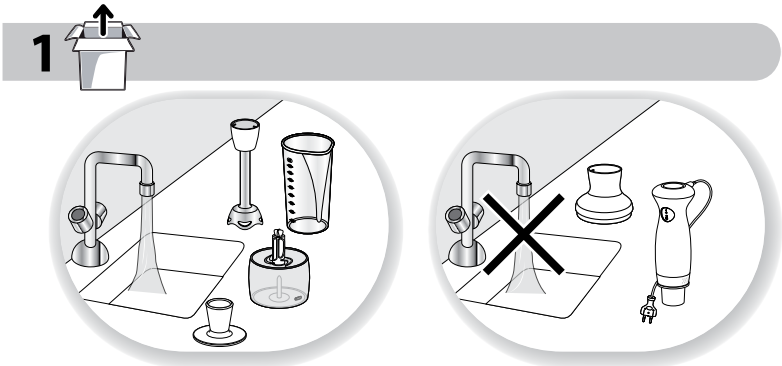
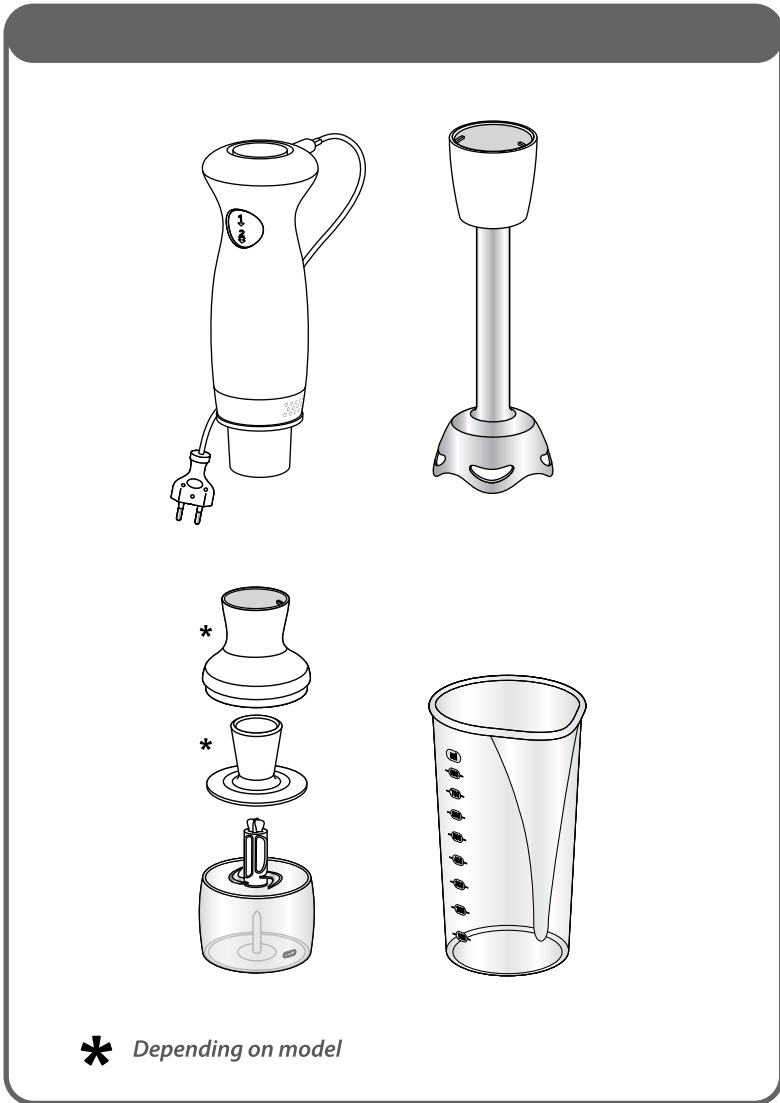
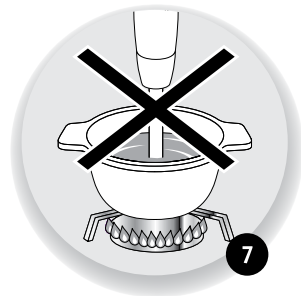
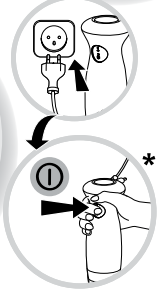
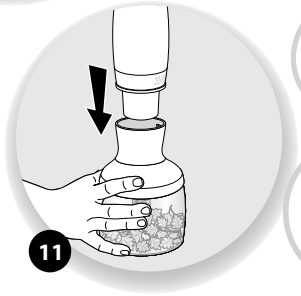
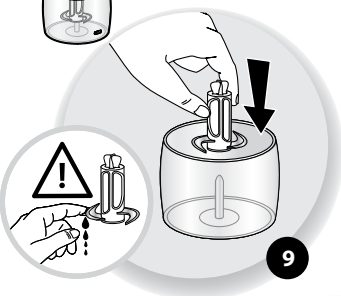


8020003339





3 * 150ml



	✗	✗	✓
	✓	✓	✗
	✗	✗	✓
	✓	✓	✓
	✓	✓	✗
	✓	✓	✓

There could be a microbiological hazard if the food contact parts of the product are not clean when first used, or if they were not cleaned thoroughly after use.

Supplying suitable instructions to clean the food contact parts of the product before first use could slightly reduce the risk of this hazard.

					Rest time
*		⊖	20s	500g	-
		⊖	20s	500ml	-
		⊖	15s	500ml	-
		⊖	20s	1Kg	-
MAX 20s		⊖	15s	500ml	-
		⊖	3s	100g	2 min
*150ml		⊖	10s	5g	2 min

If your appliance does not work, check it is properly connected to the mains and the power cord is in good condition. Your appliance still does not work? Contact an approved service centre (see the service booklet).

Guarantee



Product Guarantee

This product is guaranteed against manufacturing defects from a period of



This product is guaranteed for twelve months from the date of original purchase. Any defect that arises due to faulty materials or workmanship will either be replaced, refunded or repaired free of charge where possible during this period by the dealer from whom you purchased the unit.

The guarantee is subject to the following provisions:

- The guarantee does not cover accidental damage, misuse, cabinet parts, knobs or consumable items.
- The product must be correctly installed and operated in accordance with the instructions contained in this manual.
- It must be used solely for domestic purpose.
- The guarantee will be rendered invalid if the product is re-sold or has been damaged by inexpert repair.
- Specifications are subject to change without notice.
- The manufacturer disclaims any liability for the incidental or consequential damages.
- The guarantee is in addition to, and does not diminish your statutory or legal right.
- In the event of a problem with the product within the guarantee period call **Customer Helpline: 0345 6402020**
<http://www.argos-support.co.uk/>

Guarantor: Argos Ltd
489 – 499 Avebury Boulevard
Central Milton Keynes
MK9 2NW