

..... **OWNER'S MANUAL**

..... **Model AC110**

..... **Baby Sound Monitor**



## **⚠ WARNINGS**

**KEEP USER'S GUIDE FOR FUTURE REFERENCE. PLEASE READ THE WARNINGS AND SAFETY INSTRUCTIONS CAREFULLY BEFORE ASSEMBLING & USING THE PRODUCT. FAILURE TO FOLLOW THE WARNINGS AND THE INSTRUCTIONS COULD RESULT IN SERIOUS INJURY OR DEATH OR DAMAGE TO THE PRODUCT.**

### **TABLE OF CONTENTS**

..... **⚠ WARNINGS** ..... 2

SETUP REQUIREMENTS ..... 3

Charging the Parent Unit (10 hours) ..... 4

Setting up the nursery unit ..... 5

Turning on your monitor ..... 6

Testing and getting to know your monitor ..... 7

Activating and deactivating additional functions ..... 10

Troubleshooting ..... 12

Limited warranty ..... 15

Technical specifications ..... 15

This baby monitor is compliant with all relevant standards regarding electromagnetic fields and is, when handled as described in the User's Guide, safe to use.

## WARNINGS

Because of the serious strangulation risk to infant & toddlers, parents & caregivers should note the following **WARNINGS**.



### **WARNING** - Strangulation Hazard – Children have **STRANGLED** in cords.

- **KEEP** the Nursery Unit and adaptor cords **OUT** of the reach of children more than 3 feet or 1 metre away.
- **NEVER** use extension cords with adaptors. **ONLY** use adaptors provided.
- **This product is NOT a Toy. NEVER allow children to play with it.**

1. **ALWAYS** be sure to immediately check on baby whenever an alarm sounds.

2. **Keep cords out of reach of ANY children**

3. **ONLY** use the chargers and power adaptors provided. **Do not use other types as this may damage the device and battery pack (if included in your model).**

4. **Adult assembly required. Keep small parts away from children when assembling.**

5. **Follow instructions and test this monitor and its functions so you are familiar with it prior to actual use. ALWAYS** be sure that both the transmitter and receiver are working properly and are within range of each other – check periodically and when changing location of the Nursery Unit.

6. **DO NOT touch the plug contacts and especially with sharp or metal objects**

7. **DO NOT use the baby monitor near water.** Care should be taken so that objects **DO NOT** fall onto units and that liquids are not spilled into either unit.

13. **Only use the Angelcare recommended replacement batteries (see Technical specification).**

- Danger of explosion if the wrong battery is used or if replaced incorrectly. Refer to User's Guide for correct battery installation.
- **DO NOT** short circuit supply terminals.

14. **DO NOT mix old and new batteries and only use Angelcare recommended replacement batteries (see Technical Specification)**

15. **Dispose of batteries responsibly according to the User's Guide**

16. **Charge the batteries for 10 hours prior to first use. Be sure to have the monitor in the OFF position during this period.**

17. **When unplugging the adapter from the Nursery Unit, be sure it is switched to the OFF position. If it isn't, the unit will revert to battery mode if batteries are installed.**

18. **DO NOT use rechargeable batteries in the Nursery Unit. Use Alkaline batteries as specified** – see Technical specification

19. **Exercise care in handling batteries in order not to short out the batteries** with conducting materials such as rings, bracelets and keys.

20. **Overcharging, short circuiting, reverse charging, mutilation, or incineration of batteries must be avoided** to prevent one or more of the following occurrences: release of toxic materials, release of hydrogen and/or oxygen, gas and rise in surface temperature.

21. **DO NOT attempt to recharge batteries provided with or identified for use with this product that are not intended to be charged.** The batteries may leak corrosive electrolyte or explode.

22. **Incorrect polarity installation of the batteries in the end product must be avoided.** Reverse insertion of batteries can cause charging, and that may result in leakage or explosion.

23. **Remove batteries from units if you store the product over 30 days** because the batteries could leak and damage the product.

24. **Discard 'dead' batteries as soon as possible** since 'dead' batteries are more likely to leak in a product. If a battery has leaked or vented, discard product responsibly.



8. **Keep monitor AWAY from heat sources (such as stoves, radiators, etc.).** Heat can damage the case or electrical parts.

9. **ALWAYS place both the Baby Unit and the Parent Unit on a flat solid surface in an upright position that allows for proper VENTILATION.** **DO NOT** place on sofas, cushions, beds, etc. which may block ventilation or anywhere that would muffle the sound or interfere with the normal flow of air.

10. **The baby monitor can only be used between 10°C and 40°C (50°F and 104°F).**

### **WARNINGS AND SAFETY**

#### **INSTRUCTIONS - BATTERY SPECIFIC**

11. **ALWAYS** keep all batteries away from children

12. **The Parent Unit uses replaceable AAA NiMH Rechargeable batteries.**

# ! IMPORTANT SAFETY INSTRUCTIONS

**25. DO NOT** store this product, or the batteries provided with or identified for use with this product, in high-temperature & high humidity environments and avoid direct sunlight.

**26.** This monitor uses public airwaves to transmit signals. The Parent Unit may pick up signals or interference from other nursery monitors in your area. Your monitor may even be picked up by other households. To protect your privacy, make sure both units are turned OFF when not in use. If you experience interference, change the channel on both units.

**27. Power cord protection - Protect the Adapter's power cord from being walked on or pinched by furniture or other items** - Power supply cords should be routed so that they are not likely to be walked on or pinched by items upon or against them, paying particular attention to cords and plugs, convenience receptacle, and the point where they exit from the product. The socket outlet shall be installed near the equipment and shall be easily accessible. Make sure to plug the adapter to the socket outlet nearest to the equipment and that is easily accessible. To disconnect from mains, unplug the adapter.

**28. Only use attachments/accessories and replacement parts specified by the manufacturer. Any mounting of the product should follow the manufacturer's instructions.**

- DO NOT position this product on an unstable cart, stand, tripod, bracket or table. The product may fall, causing serious injury to a child or adult and serious damage to the product.
- Use ONLY with a cart, stand, tripod, bracket or table recommended by the manufacturer or sold with the product.
- Be sure replacement parts are supplied by Angelcare and have the same characteristics as original part.

Unauthorised substitution may result in fire, electric shock or fire.

**29. Unplug this appliance during lightning storms or when not used for long periods of time.**

**30. Servicing - DO NOT attempt to service this product yourself as opening or removing covers (except battery door) may expose you to dangerous voltage or other hazards.**

**31. Power Supply** - see Technical Specification within this guide.

**32. Overloading - DO NOT overload wall outlets, extension cords or integral convenience receptacles** as this can result in a risk of fire or electric shock.

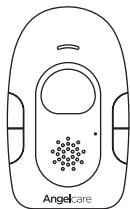
**33. Antenna** - The antenna used for this transmitter must be installed to provide a separation distance of at least 20 cm from all persons and must not be collocated or operating in conjunction with any other antenna or transmitter.

**34. Cleaning** - Disconnect all units before cleaning. DO NOT immerse in water any part of the monitor. Clean only with dry cloth.

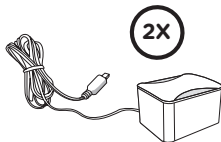
## SETUP REQUIREMENTS

### INCLUDED:

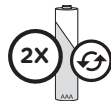
Model AC110  
Baby Sound Monitor



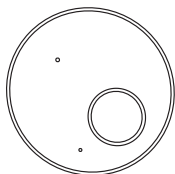
Parent Unit



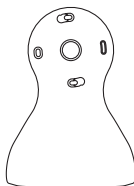
2 AC adapters  
(for Parent Unit and Nursery Unit)



2 Rechargeable AAA Batteries  
(for Parent Unit)

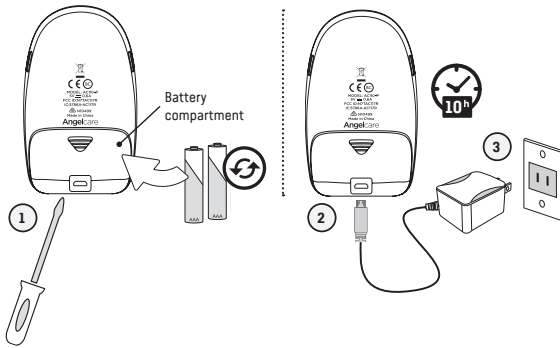


Nursery Unit



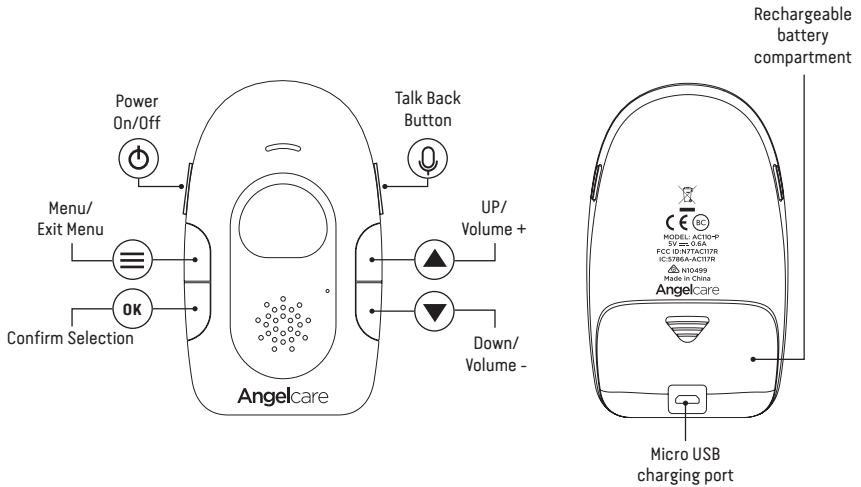
Tabletop stand  
(for Nursery Unit)

## STEP 1 - CHARGING THE PARENT UNIT (10 HOURS)



- 1) Remove the battery cover on the rear. Insert the provided rechargeable batteries into the compartment and replace cover.
- 2) Connect the USB plug to the Parent Unit and connect the power adapter to an electrical outlet.
- 3) **Charge the battery for 10 hours prior to first use.** Be sure to have the monitor in the OFF position during this period.

### PARENT UNIT:



### **WARNING** - Strangulation Hazard – Children have STRANGLED in cords.

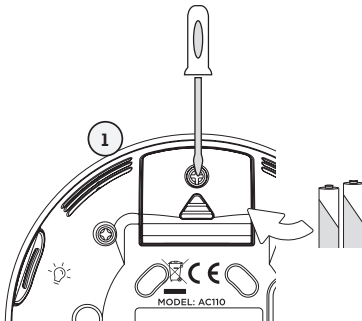
- **KEEP** the Camera Unit and adaptor cords **OUT** of the reach of children more than 3 feet or 1 metre away.
- **NEVER** use extension cords with adaptors. **ONLY** use adaptors provided.
- **This product is NOT a Toy. NEVER** allow children to play with it.

## STEP 2 - SETTING UP THE NURSERY UNIT

### 2.1 - SELECT A LOCATION FOR THE NURSERY UNIT

#### IMPORTANT

Place the cot near a supporting wall and far from air currents. Install the Nursery Unit on a flat, stable surface facing the cot at a distance of at least **1 meter**. Make sure to plug the adapter to the socket outlet nearest to the equipment and that is easily accessible.

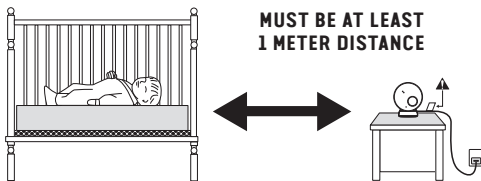


- 1) Remove the batteries cover and insert 2 AAA Alkaline Batteries (not included)

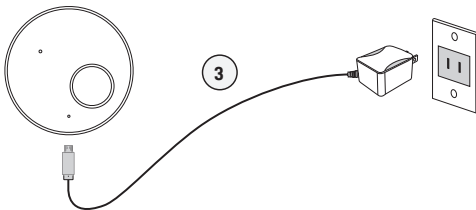
#### Note:

The batteries are a back up power supply in case of power outage. When unplugging the adapter from the Nursery Unit, be sure it is switched to the OFF position. If it isn't, the unit will revert to battery mode if batteries are installed.

2



- 2) Install the Nursery Unit on a flat, stable surface facing the cot at a distance of at least **1 meter**.

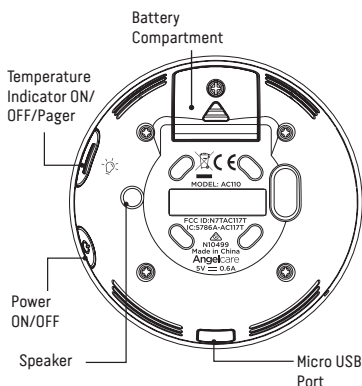
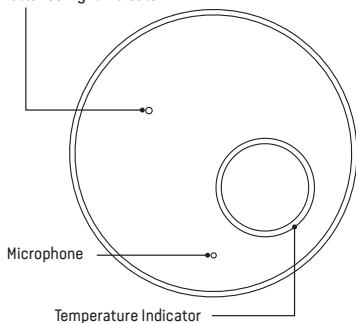


- 3) Connect the adapter to the Nursery Unit and into an electrical outlet.

**Note:** Each time you power **ON** your Nursery Unit, the internal thermometer will need to calibrate to ensure accuracy. This automatic process will take approximately 30 minutes. The colour changing temperature display, by default, will be turned **"OFF"**. You may turn this feature **"ON"** in the settings mode on your Parent Unit.

## NURSERY UNIT:

Power ON/OFF Light Indicator  
Low Batteries Light Indicator



## STEP 3 - TURNING ON YOUR MONITOR

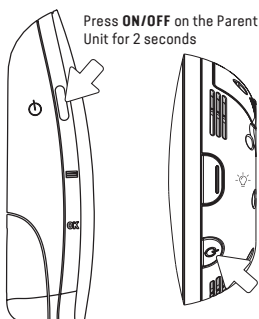
# YOU ARE NOW READY TO USE YOUR MONITOR

The Angelcare® monitor can be used with the pre-program factory settings or you can also customize your settings to your preference.

## DEFAULT SETTINGS

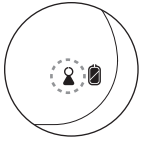
	<b>Sound:</b>	<b>ON</b>
	<b>Sound transmission (VOX):</b>	<b>OFF</b>
L2	<b>VOX Sensitivity:</b>	<b>2 on 4</b>
°F °C	<b>Temperature Unit:</b>	<b>Celsius</b>
	<b>Temperature Alarm:</b>	<b>OFF</b>
	<b>Temperature Alarm Setting:</b>	<b>High: 30°C Low: 19°C</b>

## TURN ON YOUR MONITOR



### NOTE:

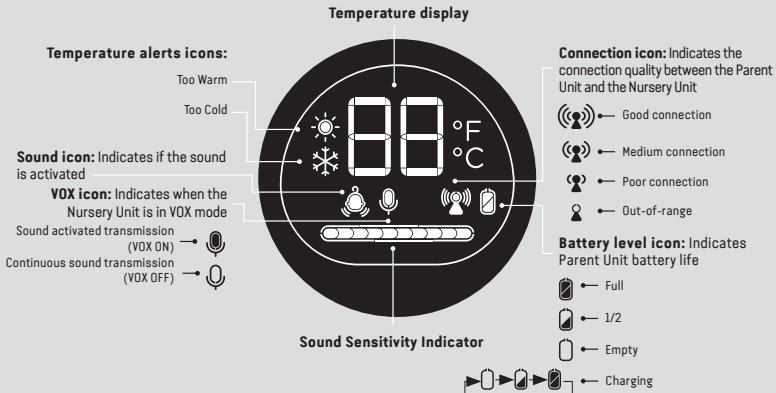
The screen of the Parent Unit flashes the out-of-range icon until it displays the room temperature and function icons. The connection process should be complete within 30 seconds. If this sequence is not completed within 30 seconds you will need to switch the units off and repeat.



When Parent Unit is **ON** and Nursery Unit is **OFF** or, if there is a lost connection between the 2 units;

- The **Out-of-Range** icon on the Parent Unit will blink
- The Parent Unit will beep 3 times every 15 seconds

## IMPORTANT ICONS



## STEP 4 - TESTING AND GETTING TO KNOW YOUR MONITOR

The Angelcare® monitor can be used with the pre-program factory settings or you can customize your settings to your preference.



All changes and adjustments made in the main menu will not be saved unless you confirm them by pressing the **EXIT** button.

### IMPORTANT

When in MENU mode, sound transmission between Parent and Nursery Units will be temporarily deactivated.

### 4.1 - MENU ACCESS AND CHANGING THE SETTINGS

The MENU settings are accessed by pressing and HOLD the MENU button on the Parent Unit. The MENU functions are in a loop. Each time you press the **OK** button briefly you move on to the next setting. Once you have selected your preferred settings you must press EXIT MENU or your changes will not be saved. The MENU functions are in the following order

PRESS 1 TIME: VOX .....	STEP 4.3
PRESS 2 TIMES: TEMPERATURE (Unit).....	STEP 4.4
PRESS 3 TIMES: TEMPERATURE (Alarm).....	STEP 4.4

## 4.2 - SOUND

### TO TEST SOUND:

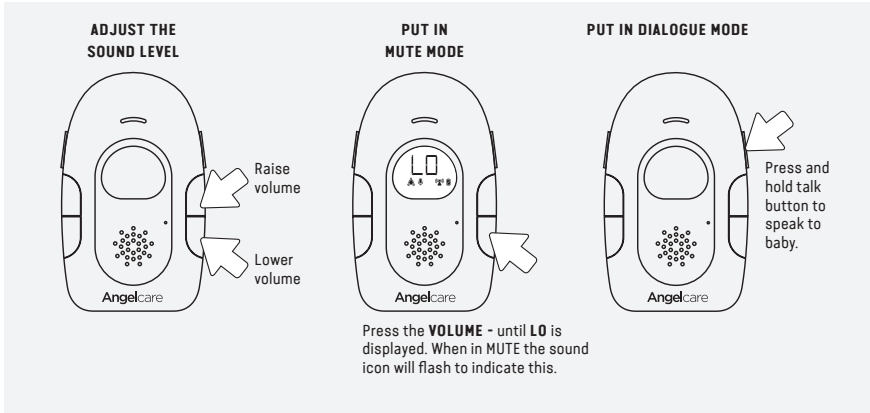
Ask someone to speak into the Nursery Unit or place the unit near a radio to ensure that sound is being picked up.

### IMPORTANT

To avoid feedback (whistling), keep both units at least 3 meters apart.

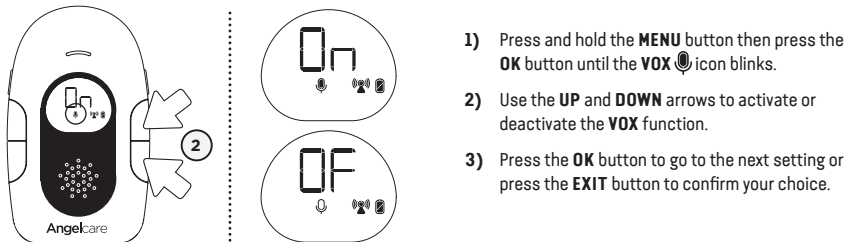
### IF YOU HEAR NO SOUND:

- Check that both units are powered ON.
- Check that both units are plugged into functioning electrical outlets.
- Check the batteries of the Parent Unit (replace or recharge them if necessary).
- Bring the Parent Unit closer to the Nursery Unit.



## 4.3 - VOICE ACTIVATION (VOX ON) OR CONTINUOUS SOUND (VOX OFF) MODE

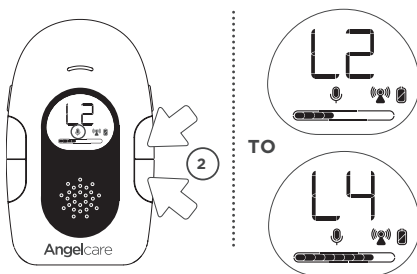
Allows you to select your option on how you monitor sound: **VOX ON** (voice activation picks up sound based on the setting of the sensitivity level) or **VOX OFF** (Continuous sound monitoring is continuously on, picking up all sounds).





## TO ADJUST SOUND SENSITIVITY (VOX)

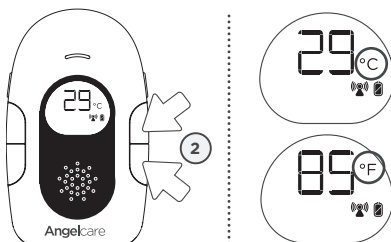
The sensitivity of the microphone is adjustable. This means that sound will only transmit based on the level that you set.



- 1) When the Sound Transmission is **ON** (VOX ON) press and hold the **MENU** button then press **OK** button until **VOX ON** icon blinks.
- 2) Use the **UP** and **DOWN** arrows to select desired microphone sensitivity level.
- 3) Press the **OK** button to go to the next setting or press the **EXIT** button to confirm your choice.

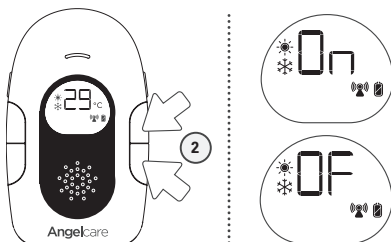
## 4.4 - TEMPERATURE

### TO SELECT TEMPERATURE IN CELSIUS OR FAHRENHEIT



- 1) Press and hold the **MENU** button then press **OK** button until the °C / °F icon blinks.
- 2) Use the **UP** and **DOWN** arrows to select temperature in Celsius or Fahrenheit.
- 3) Press the **OK** button to go to the next setting or press the **EXIT** button to confirm your choice.

### TO ACTIVATE OR DEACTIVATE THE TEMPERATURE ALARM

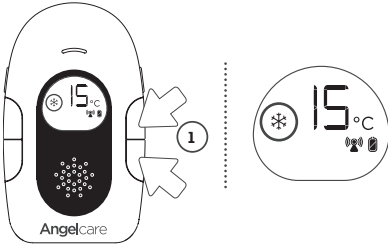


- 1) Press and hold the **MENU** button then press **OK** button until the **Temperature Indicator** icon blinks.
- 2) Use the **UP** and **DOWN** arrows to activate or deactivate the temperature alarm.
- 3) Press **OK** button to confirm your choice and set the **Temperature** range as below.

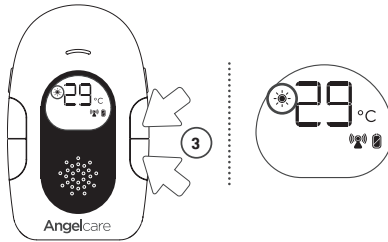
## TO SET TEMPERATURE RANGE

### NOTE:

Make sure to turn **ON** Temperature alarm to be able to set Temperature range.



- 1) The **Low Temperature** ❄️ will blink. Use the **UP** and **DOWN** arrows to set the **LOW** temperature alarm (5° to 19° Celsius).
- 2) Press the **OK** button to confirm your choice and set the High temperature.



- 3) The **High Temperature** ☀️ icon will blink. Use the **UP** and **DOWN** arrows to set the **HIGH** temperature alarm (22° to 37° Celsius).
- 4) Press the **OK** button to go to the next setting or press the **EXIT** button to confirm your choice.

The low temperature range is 5° to 19°C  
and high temperature range is 22° to 37°C.

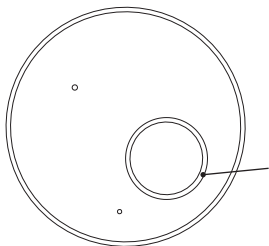
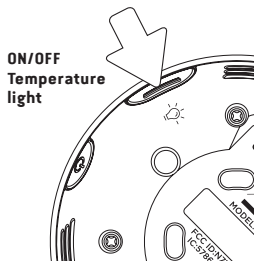
### TEMPERATURE ALARM

- Alarm activates when the temperature reaches the maximum or minimum set temperature.
- Parent Unit will emit 3 consecutive beeps, every 5 seconds if the temperature reaches levels out of your chosen range. The relevant icon will flash on the Parent Unit screen to alert you.

## STEP 5 - ACTIVATING AND DEACTIVATING ADDITIONAL FUNCTIONS

### 5.1 - ACTIVATE OR DEACTIVATE TEMPERATURE INDICATOR ON NURSERY UNIT

With this option the Nursery Unit Temperature Indicator will light up in colour when the temperature goes above or below your preferences. If the temperature goes above your set preferences and this option is activated, the light on the Nursery Unit will turn to red instead of the default white. If the temperature goes below the set preferences, then the light will turn blue.



- Red - Room temperature is too hot
- Blue - Room temperature is too cold
- White - Room temperature is within your preferred parameters

## 5.2 - OUT OF RANGE SETTINGS

Your monitor has an Out-of-Range alarm that advises you when your two units are not communicating. Out-of-Range situations can be caused by distance or by physical interferences.

### RANGE:

Open field (Open area without obstructions): up to 250 meters.

### OUT-OF-RANGE ALARM

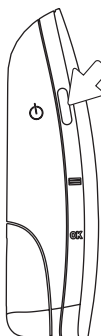
- Alarm activates when your two units are not communicating.
- The Parent Unit will emit a triple beep every 15 seconds.
- Out-of-Range Icon will flash on the screen.



### IMPORTANT

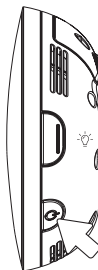
If you turn the Nursery Unit OFF the Out-of-Range Alarm will sound. Turn the Nursery Unit ON again to reactivate the link.

### TO STOP THE OUT-OF-RANGE ALARM:



Press 2 seconds  
to turn the Parent  
Unit **OFF**

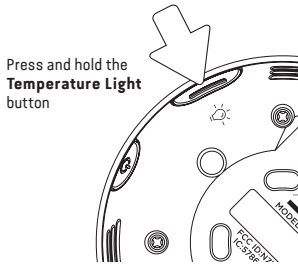
OR



Turn the Nursery  
Unit **ON**

### 5.3 - PAGER

Allows you to locate the Parent Unit.



#### TO LOCATE THE PARENT UNIT

Press and hold the Temperature Light button on the side of the Nursery Unit. The Parent Unit will emit a paging sound.

#### TO STOP THE PAGING SOUND

Press any button on the Parent Unit or the Pager button on the Nursery Unit.

## TROUBLESHOOTING

### TAKING CARE OF YOUR RECHARGEABLE BATTERIES

- Ensure that you fully charge your batteries for 10 hours before their first use.
- To maintain maximum battery life it is recommended that you fully discharge your batteries periodically. Battery performance can be diminished by leaving the batteries constantly charging. If your Parent Unit is not in use, please turn it off.
- Inadequate battery power can impair the performance of your monitor. If you are not happy with the performance of your Parent Unit please replace the rechargeable batteries (2 x NiMH Rechargeable Batteries).
- It is advisable to change the batteries every 6 months.

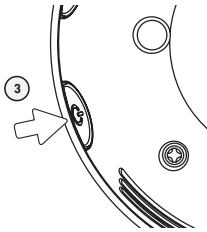
Power On/Off Light Indicator Low Battery Light Indicator	
Flashing green	Nursery unit is using the back-up batteries
Flashing yellow	Nursery Unit batteries are low
Steady green	Monitor is activated

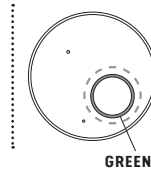
Temperature Indicator	
Steady Red	Room temperature is too hot
Steady Blue	Room temperature is too cold
Steady White	Room temperature is within your preferred parameters

## LOSS OF CONNECTIVITY BETWEEN THE PARENT UNIT AND THE NURSERY UNIT

- In the case of loss of connectivity, the first step is to bring the Parent Unit and Nursery Unit closer together and make sure that both units are ON to restore the connection. If there is still no connection and no out-of-range warning after the above has been done, then and only then should the re-connection procedure below be done.



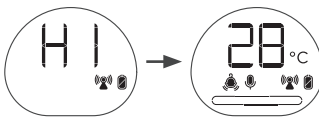
- 1) Turn both Units **OFF**.
- 2) Turn the Nursery Unit **ON**.
- 3) Press 4 consecutive times the Power **ON/OFF** button on the Nursery Unit.



The Temperature Indicator Light on the Nursery Unit will flash quickly in green (indicates Nursery Unit is in linking mode).



- 4) Turn the Parent Unit **ON**. The Out-of-range icon (📶) will blink (indicates Nursery Unit is in linking mode).
- 5) Press and hold the **Talk Back** button on the Parent Unit until a beep tone is heard.
- 6) Press **OK** button on the Parent Unit. The Out-of-Range icon (📶) should blink faster to indicate that the Parent Unit is in linking mode.



The Parent Unit will display H1-H2 icon during the reconnection procedure. The reconnection is successful if Parent unit shows regular screen view.

## NURSERY UNIT POWER ON INDICATOR (GREEN LIGHT) DOES NOT LIGHT UP

- Check connections or change to another electrical outlet.
- Press the Nursery Unit ON/OFF button for 2 seconds to turn the Nursery Unit ON.

## WEAK RECEPTION

- Bring units closer together.
- Change the position of one or both units.
- Place units on a flat surface out of baby's reach.
- Replace the batteries or recharge the Parent Unit.

## STATIC, DISTORTION, INTERFERENCES (FROM OTHER MONITORS, WIRELESS PHONES, WALKIE-TALKIES, ETC...)

- Rotate the Parent Unit or move it away from source of interference.

## FEEDBACK (LOUD NOISES EMITTED FROM THE PARENT UNIT)

- Move units further apart (at least 3 meters apart).
- Decrease volume on the Parent Unit.

## THE PARENT UNIT SCREEN IS BLACK (PARENT UNIT IS OFF)

- Turn the Parent Unit back ON by pushing and holding the power button.
- Replace the batteries or recharge the Parent Unit.

## NO POWER

- Check or replace batteries.
- Make sure Monitor is **ON**.

## NURSERY UNIT POWER ON INDICATOR (GREEN LIGHT) DOES NOT LIGHT UP

- Check connections or change to another electrical outlet.
- Press the Nursery Unit ON/OFF button for 2 seconds to turn the Nursery Unit ON.

## CUSTOMER CARE - LIMITED WARRANTY

Angelcare® warrants to the original owner of this product that Angelcare® monitor is free from any material and workmanship defects for the term of the warranty period (see warranty table below to determine the warranty for your country). If this monitoring system fails to function properly when used as directed under normal conditions and during the warranty period, Angelcare® will either repair or replace the product, at our discretion, free of charge. Please contact your local distributor to validate warranty and warranty period.

The product must be accompanied by a proof of purchase, either a bill of sale or other proof that the monitoring system is within the warranty period. Angelcare® will bear the cost of repairing or replacing the product and shipping it back to you.

**This warranty does not apply to a product which has been damaged as a result of improper maintenance, an accident, improper voltage supply or any other form of misuse. The warranty is also void if the owner repairs or modifies the product in any way. Angelcare® is not liable for any incidental or consequential damages with regard to this product. The warranty also excludes any liability other than what is stated above. No other warranty is given.**

This warranty does not cover products and accessories which are not Angelcare®-branded, or any problems that result from usage that is not in accordance with product instructions, failure to follow the product instructions, or problems caused by using accessories, parts or components not supplied by Angelcare.

LEGAL RIGHTS VARY FROM COUNTRY TO COUNTRY. SOME COUNTRIES DO NOT ALLOW THE EXCLUSION OR LIMITATION OF INCIDENTAL OR CONSEQUENTIAL DAMAGES, SO THE ABOVE LIMITATIONS MAY NOT APPLY TO YOU.

WE ARE NOT IN ANY WAY RESPONSIBLE FOR ANY OUTCOME RESULTING FROM THE USE OF THIS PRODUCT.

WARRANTY TERM PER COUNTRY	
North America	1 year
UK, South Africa, Russia	1 year
Other countries	2 years

**IMPORTANT!** This Angelcare® monitor is a personal care product. Please do not return this product to the store. If you have questions or need help, please call your distributor before returning this product.

**We, at Angelcare®, stand behind all of our products. If you are not completely satisfied or have any questions, please contact your distributor before returning this product:**

### United States and Canada:

Please contact us at: [info@angelcarebaby.com](mailto:info@angelcarebaby.com)

### Other countries:

Find your local distributor by visiting our website: [international.angelcarebaby.com](http://international.angelcarebaby.com).

## TECHNICAL SPECIFICATIONS

### Range:

- Open field (Open area without obstructions):
- Between the Nursery Unit and the Parent Unit: up to 250 meters.

### Power Supply:

- 2 AAA alkaline batteries (not included) or 100/240V AC/5V DC adapter for Nursery Unit.
- 2 AAA rechargeable batteries and 100/240V AC/5V DC adapter for the Parent Unit.

**Caution:** To reduce the risk of electric shock, do not expose this product to rain or moisture.

Danger of explosion if batteries are incorrectly replaced. The battery included for the Parent Unit is 2 AAA NIMH rechargeable batteries, manufactured by GPI INTERNATIONAL LIMITED (GN60AAAHC, 1.2V 600mAh). Only use the Angelcare recommended replacement battery. To obtain information on replacement batteries please contact Angelcare customer service: [www.angelcarebaby.com](http://www.angelcarebaby.com) or contact your local distributor. Instructions will be included with the replacement battery. Keep all batteries away from children.

### Batteries:

- DO NOT mix old and new batteries.
- DO NOT mix alkaline standard (carbon-zinc), or rechargeable (NI-CD, NIMH, etc.) batteries.
- CAUTION:** RISK OF EXPLOSION IF BATTERY IS REPLACED BY AN INCORRECT TYPE

### Transmission:

Transmission between the Parent Unit and the Nursery Unit is made on 1.88 to 1.9 GHz frequency for Europe/Asia/Africa/Australia.

### Maximum RF Power Transmitted:

- 24dBm (250mW) between Nursery Unit and Parent Unit

RF Channel no. between Nursery Unit and Parent Unit: 10

Hereby, Angelcare Monitors Inc., declares that this Baby Monitor is in compliance with Directive 2014/53/EU. The full text of the EU declaration of conformity is available at the following internet address: <https://international.angelcarebaby.com/declaration-of-conformity>

### ErP Compliance

USE ONLY THE FOLLOWING ANGELCARE® BRAND POWER SUPPLY MODEL NUMBERS:  
EUROPEAN UNION (INCLUDING GERMANY) - K05S050060G  
UK - K05S050060B

### PROTECT THE ENVIRONMENT

The wheellie bin symbols mean that according to local laws and regulations your product and/or its battery shall be disposed of separately from household waste. When the product/battery reaches its end of life take it to a collection point designated by local authorities. The separate disposal and recycling will help conserve natural resources and protect human health and the environment. Refer to User's Guide for removal of batteries.

See product for compliance marks specific to this device.



## APPENDIX: INFORMATION ON EXPOSURE TO RADIO WAVES AND SAR (SPECIFIC ABSORPTION RATE)

The design of Parent Unit complies with the current regulations governing exposure to radio waves. These regulations are based on scientific guidelines that indicates safety margins designed to ensure the safety of everyone, regardless of age or state of health. The guidelines on exposure to radio waves use a unit of measurement known as the SAR (Specific Absorption Rate). SAR tests are carried out using standardized method, with the Parent Unit transmitting at the highest certified level of power on all the frequency bands it uses. The maximum SAR level recommended by ICNIRP (International Commission on Non Ionizing Radiation Protection) is 2 W/kg, measured on 10 g of tissue. The highest SAR levels recorded for the Parent Unit are as follows: When used in direct contact with the body 1.8GHz DECT is 0.042W/Kg(10g). When used in front of the face 1.8GHz DECT is 0.021W/Kg(10g). This device complies with the guidelines on exposure to radio frequency both when it is positioned at 0mm from the body or in front of the face.

[www.angelcarebaby.com](http://www.angelcarebaby.com)