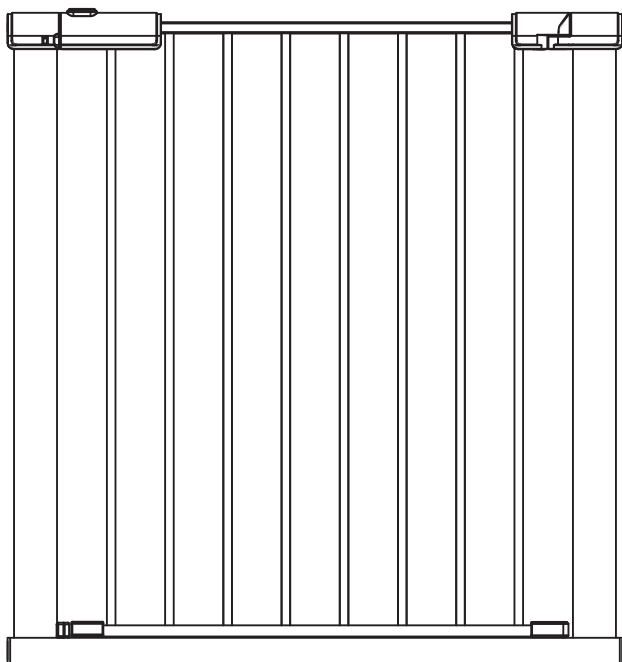




CUGGL SAFETY GATE WHITE

CUGGL SAFETY GATE GREY

care & instruction manual



## IMPORTANT

KEEP THESE INSTRUCTIONS FOR FUTURE REFERENCE

Cat. No.: 8561572  
&9445587

# IMPORTANT! READ AND FOLLOW THESE INSTRUCTIONS CAREFULLY AND KEEP FOR FUTURE REFERENCE

## Introduction

Please read the instructions thoroughly to ensure proper installation.

Please immediately inspect your safety gate upon receipt. If you see any damage, or additional parts are required for this gate, do not assemble gate and please go to back page of the instruction booklet for website or Consumer Relations Representative information. We recommend that you carry out the installation away from young children as some of the smaller components may present a choking hazard when loose.

## Important Information

There is a gap between your gate frame and handle. This is not a defect. The gap on your gate will close once it is properly mounted. Please check the gate on a regular basis to ensure gate and parts are all in proper working order. If the gate is used at the bottom of the stairs, please place towards the front of the lowest stair. Ensure the gate is attached between two clean and solid surfaces. Ensure appropriate fixings are used for drywall, wood, brick, etc. If wall plugs are provided with the gate and do not secure to the wall satisfactorily, consult with a hardware store for your proper wall plug application. If additional parts are required for this gate, please go to back page of the instruction booklet for website or Consumer Relations Representative information. Do not use this gate without using all four wall cups, suitable screws and wall fixings depending on wall construction.

## Disclaimer

Any safety gate which has been subjected to misuse, abuse, abnormal use, excessive wear and tear, improper assembly, negligence, environmental exposure, alteration or accident, or has had its serial number altered or removed invalidates any and all claims against the manufacturer. Any damage to property during installation of your safety gate is the sole responsibility of the end user.

# WARNING!

- **WARNING**— Never use with a child able to climb over or dislodge the safety barrier.
  - **WARNING**— Be careful when stepping over the bottom bar.
  - **WARNING**— Keep children away when installing this safety barrier and with extensions.
  - **WARNING**— Do not use the safety barrier if any components are damaged or missing.
  - **WARNING**— Incorrect installation can be dangerous.
  - **WARNING**— The safety barrier must not be fitted across windows.
  - **WARNING**— Never use without wall cups.
  - **WARNING**— Wall cups must be screwed in place before use.
  - **WARNING**— Always check that the barrier is properly closed after each use and before walking away.
  - **WARNING**— Don't install a second gate above the first as there is a risk of serious injury or death.
- 
- Check that the safety barrier is correctly closed. after each use and before walking away. It is manual closing system.
  - To prevent serious injury or death, securely install the safety barrier according to manufacturer's instructions.
  - Safety barrier should be checked regularly to ensure it is secure and functioning in accordance with these instructions.
  - Additional or replacement parts should only be obtained from the manufacturer or distributor.
  - Adjust to fit opening between 75cm and 81cm.
  - Do not allow older children to climb on or over the gate as this can result in an accident.
  - Safety barrier is suitable for use with children up to 24 months of age.
  - This product will not necessarily prevent all accidents. Never leave child unattended.
  - This safety barrier complies with EN1930:2011.
  - This safety barrier is for indoor domestic use only.
  - To clean: Use mild soap and wipe with a damp cloth.
  - Adult assembly required.

Cat. No.: 8561572  
&9445587

# A Guide to Wall Mounting & Fixings

## Important note:

If plastic wall plugs (rawl plugs) are supplied with your product, e.g.:



- these are only suitable for use in masonry walls.

If you are in any doubt about the correct wall plugs for your wall, seek professional advice.


Failure of the product due to using the incorrect fixings is the responsibility of the installer.



**Important:** when drilling into walls always check that there are no hidden wires or pipes etc.

**Make sure that the screws and wall plugs being used are suitable for supporting your unit. Consult a qualified tradesperson if you are unsure.**

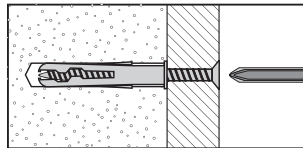
### Hints:

- 1: General rule:  always use a larger screw and wall plug if you are not sure.
- 2: Ensure you use the recommended drill bit to match the wall plug and hole size.
- 3: Ensure you drill the hole horizontally; do not force the drill or enlarge the hole.
- 4: Take extra care when drilling high walls, ceilings and ceramic tiles. Ensure wall plugs are inserted beyond the thickness of the ceramic tiles to avoid the tiles splitting or cracking.
- 5: Ensure wall plugs are well fitted and are a tight fit in the drilled hole.

## Types of walls

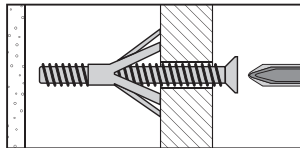
You can use one of the following types of wall plug if your walls are made of brick, breeze block, concrete, stone or wood.

### No.1 “General Purpose” wall plug



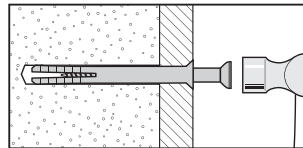
Generally aerated blocks should not be used to support heavy loads, use a specialist fitting in this case. For light loads, general purpose wall plugs can be used.

### No.3 “Cavity Fixing” wall plug



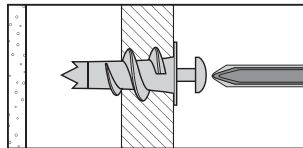
For use with plasterboard partitions or hollow wooden doors.

### No.5 “Hammer Fixing” wall plug



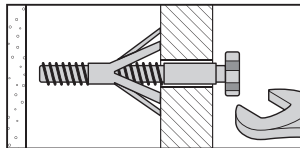
For use with walls stuck with plasterboard. The hammer fixing allows it to be fixed to the wall rather than the plasterboard. Always check the fixing is secure to the retaining wall.

### No.2 “Plasterboard” wall plug



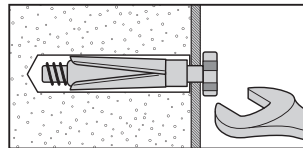
For use when attaching light loads onto plasterboard partitions.

### No.4 “Cavity Fixing – Heavy Duty” wall plug



For use when fitting or supporting heavy loads such as shelving, wall cabinets and coat racks.

### No.6 “Shield Anchor” wall plug – heavy loads



For use for heavier loads such as TV and HiFi speakers and satellite dishes etc.

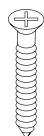


## Care & Maintenance

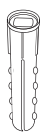
**Safety:** always check the fitting and location to ensure your safety in and around the home.

**Fitting:** from time to time check the fitting to ensure the wall plugs or screws do not become loose.

If you need help or have any question, call the Argos Aftersales Helpline: 0345 640 2020



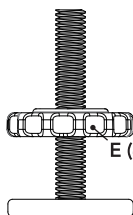
A (4x)



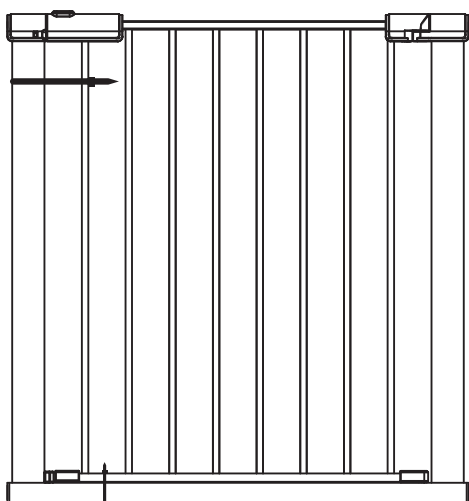
B (4x)



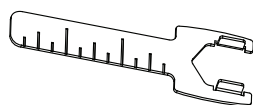
C (4x)



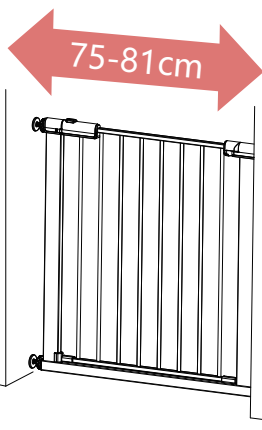
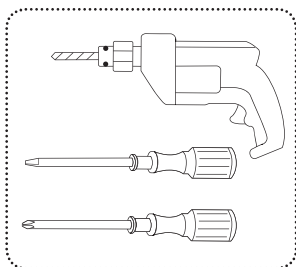
E (4x)



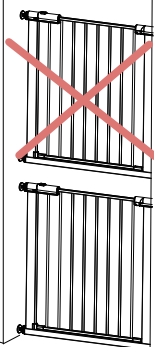
J (1x)



K (1x)



75-81cm

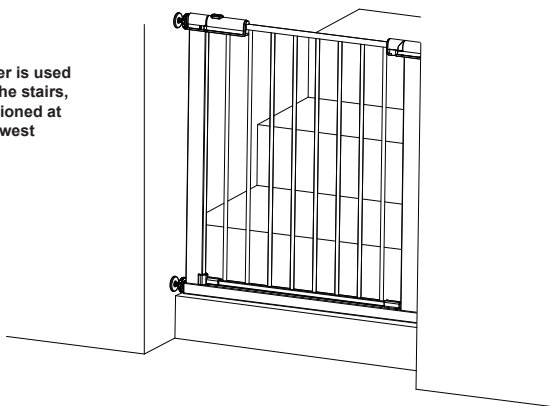


**WARNING**

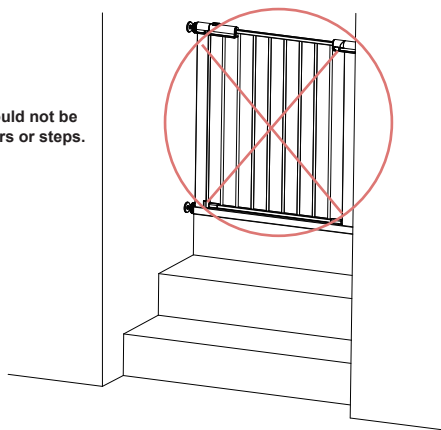
Don't install a second gate above the first as there is a risk of serious injury or death.



If the safety barrier is used at the bottom of the stairs, it should be positioned at the front of the lowest tread possible.

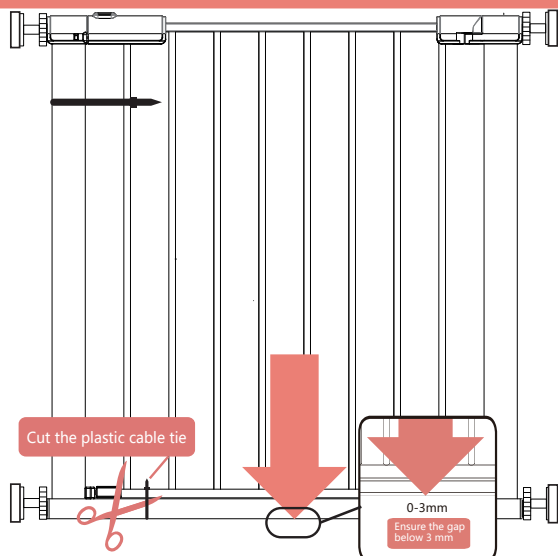


The safety barrier should not be used at the top of stairs or steps.

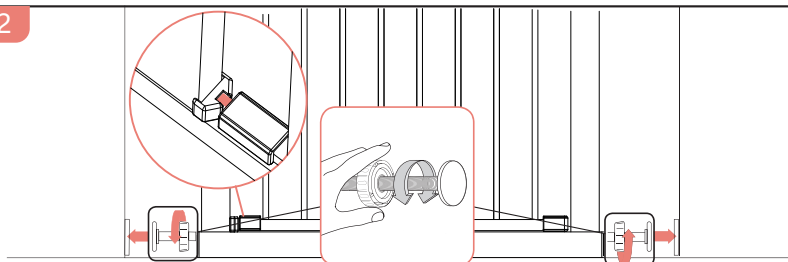


1

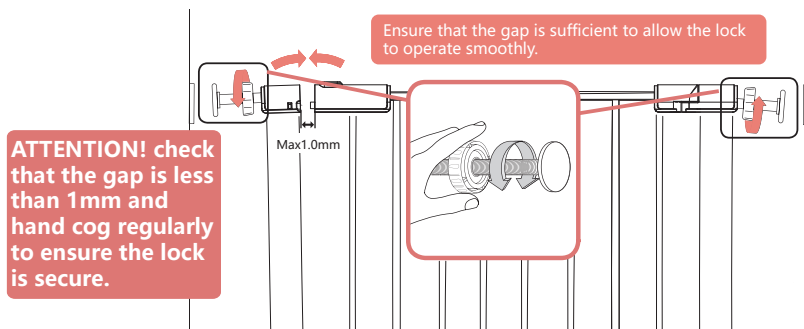
Pre-install the gate and the wall cups into the desired position.



2

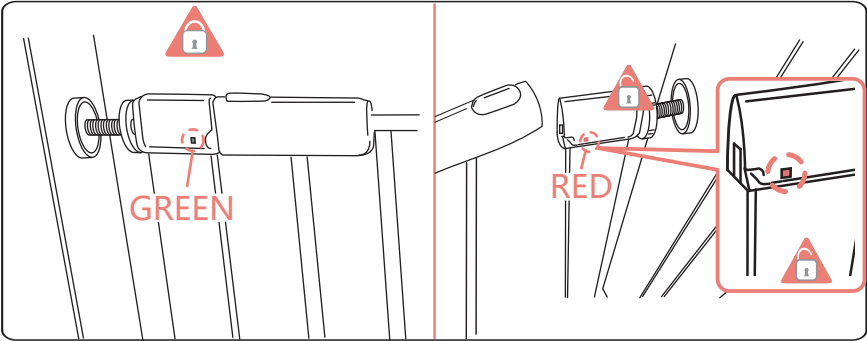
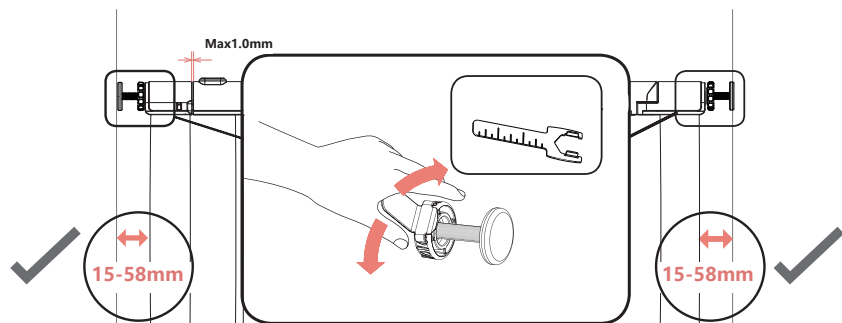


3



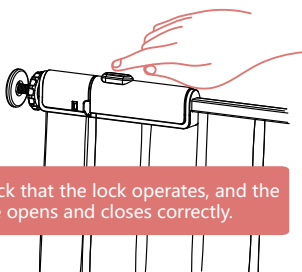
4

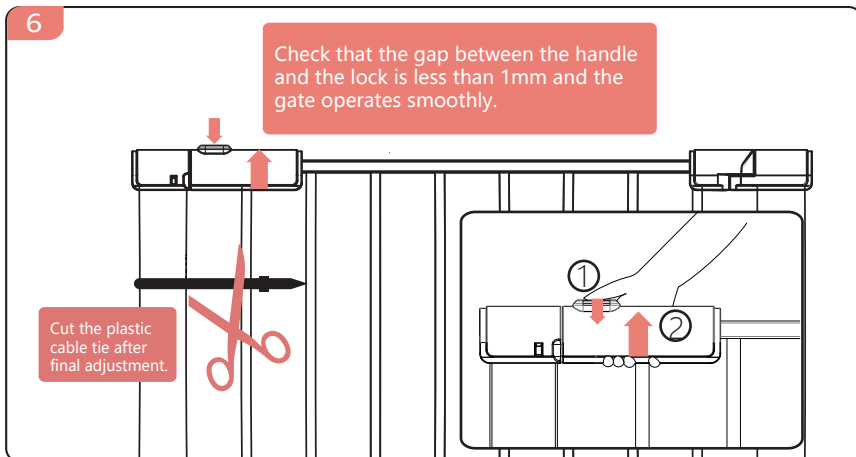
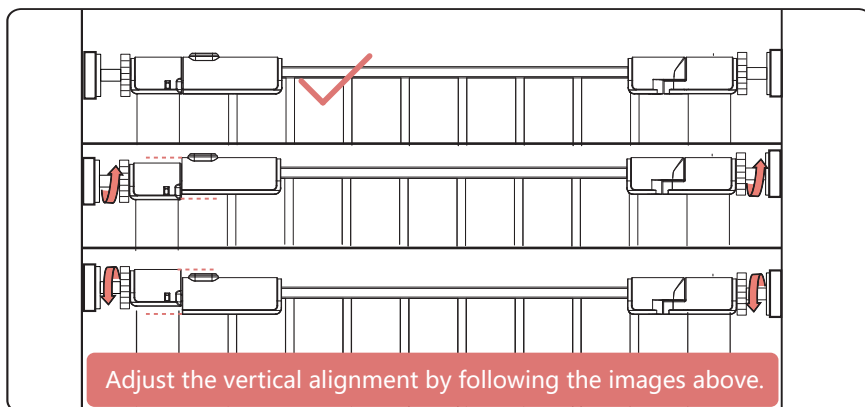
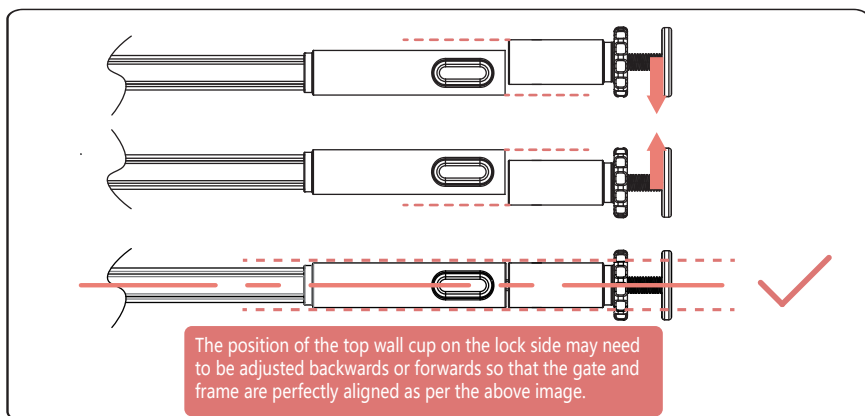
Please use the spanner to install the gate securely.



5

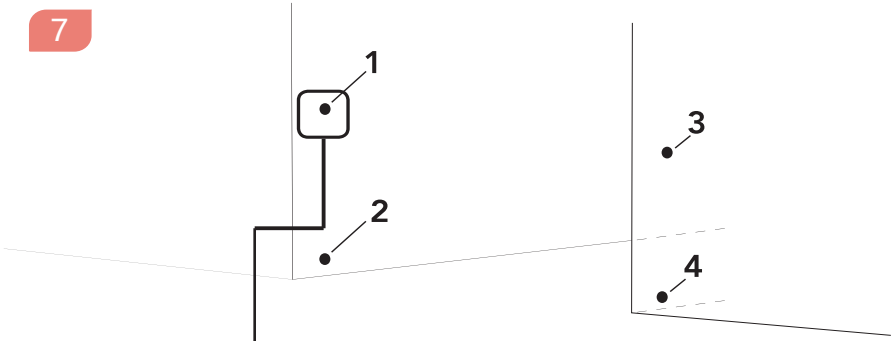
Note: The gate should not move when the button is pressed. Further backward or forwards adjustment of the top wall cup on the lock side may be required if this happens.



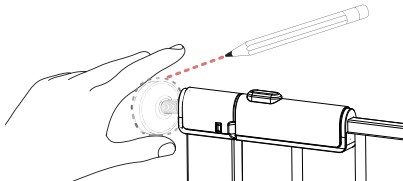




7



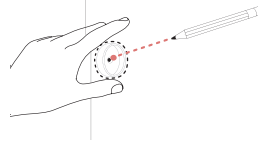
7.1



With the gate still installed, mark round the wall cups (C) with a pencil.

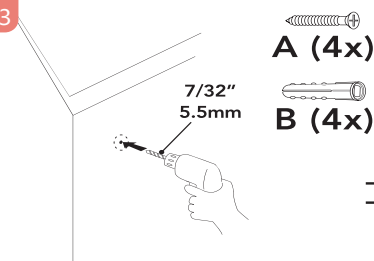
7.2

Remove the gate and line up the wall cups (C) with the marks on the walls.



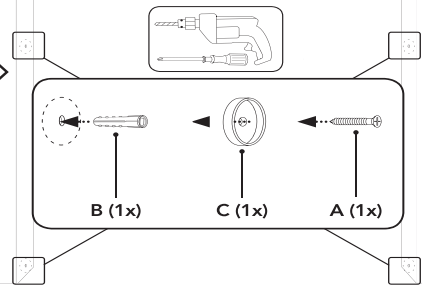
Mark the screw position onto the wall.

7.3



Drill pilot holes for the screws if fitting into the door frame or holes for the wall plugs using the correct size drill and fitting for the wall construction.

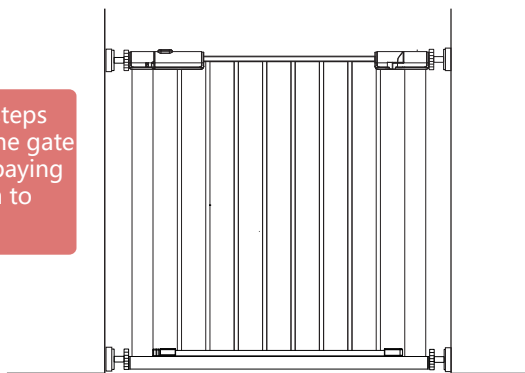
Secure the wall cups (C) in place using screws (A) provided or suitable screws.



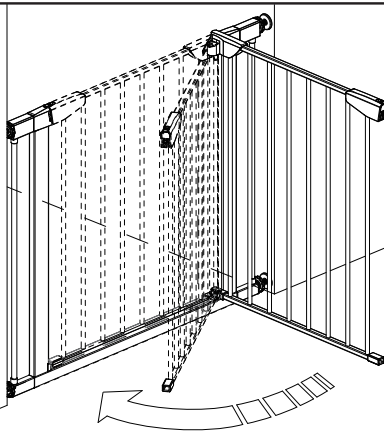
End of Pre-installation instructions.

8

Please follow steps 1-6 to install the gate ready for use paying close attention to steps 3-6.



The gate is closed only when there is a "click" sound and the red mark is not visible on the lock anymore and the bottom lock has engaged. You must ensure that the gate is full locked after each use and before walking away.



**Attention! You will need to keep the spanner (K) for future adjustment of gate.**

## Customer care

### Your child's safety is your responsibility

If you have a problem with this product or require replacement parts, please contact your nearest Argos store or telephone the Argos Customer Care Team on 0345 640 2020

Alternatively write to:

### Customer Care Team

Produced in China. Argos Limited, 489-499 Avebury Boulevard, Milton Keynes, MK9 2NW. Argos(N.I.) Ltd, Forestside Shopping Centre, Upper Galwally, Belfast, United Kingdom, BT8 6FX.

Argos Distributors(Ireland) Limited, Unit 7, Ashbourne Retail Park, Ballybin Road, Ashbourne, County Meath, Ireland

TEL 0345 640 2020

[www.argos.co.uk/cuggl](http://www.argos.co.uk/cuggl)

Cat. No.: 8561572  
&9445587