



JLAB AUDIO
PLAY GAMING
EARBUDS

We love that you are rocking JLab Audio!
We take pride in our products and fully stand behind them.



YOUR WARRANTY

All warranty claims are subject to JLab Audio authorization and at our sole discretion. Retain your proof of purchase to ensure warranty coverage.



CONTACT US

Reach out to us at support@jlabaudio.com or visit jlabaudio.com/contact

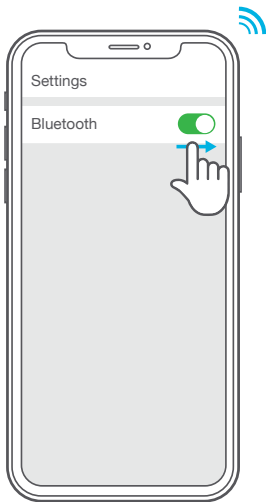
REGISTER TODAY

jlabaudio.com/register

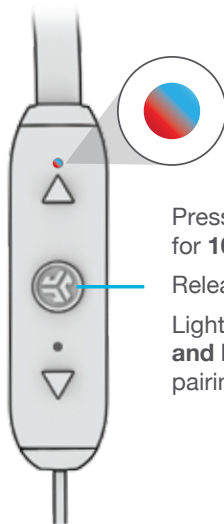
Product updates | How-to tips
FAQs & more

BLUETOOTH PAIRING

- 1 Turn on the Bluetooth in your device settings.



- 2



Press and hold button for **10 seconds**.

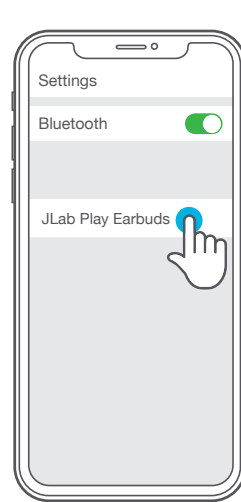
Release.

Light will **flash red and blue** to indicate pairing mode.

- 3

- Select "JLab Play Earbuds" in your device settings to connect.

Light will **slow blink blue** when Bluetooth is paired.

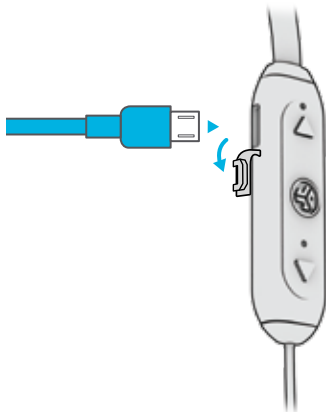


RECURRING USE

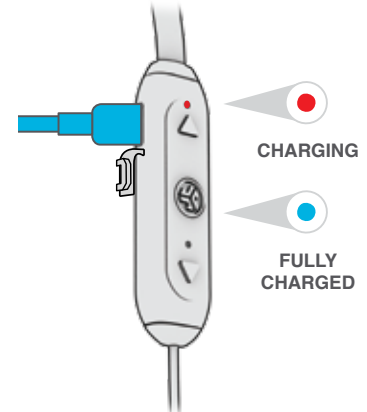
Once JLab Play has initially paired to your device, the earbuds will auto-connect to your Bluetooth device when powered back ON. (Follow **BUTTON FUNCTIONS** instructions)

CHARGING

- 1 Open USB door and connect the cable to a computer or 5V (or less) power source to charge.



- 2 Light will turn **solid red** when charging and **turn blue** when fully charged.



CHARGING

FULLY CHARGED


BUTTON FUNCTIONS


- VOLUME DOWN:**
Click once
- TRACK BACKWARD:**
Click & hold 2+ seconds
- POWER ON / OFF:**
Click & hold 2 seconds
- PLAY / PAUSE / ANSWER
HANG UP CALLS:**
Click once
- REJECT INCOMING CALL:**
Click & hold 1 second
- ACTIVATE SIRI (iOS) OR
"OK GOOGLE" (ANDROID):**
Click twice
- BLUETOOTH PAIRING:**
(Follow First Time Setup:
Bluetooth Pairing)
- VOLUME UP:**
Click once
- TRACK FORWARD:**
Click & hold 2+ seconds



EQUALIZER MODES

Press and hold 1+ second
both buttons simultaneously
(JLab Play will always be in GAMING
MODE from initial power ON.)

 **GAMING**
(One Beep)
Increased mid-high frequency response
for clear vocals and spacial awareness

 **MUSIC**
(Two Beeps)
Amplified vocals and bass
for enhanced music listening

MICROPHONE ON:
Switch Up (See blue)

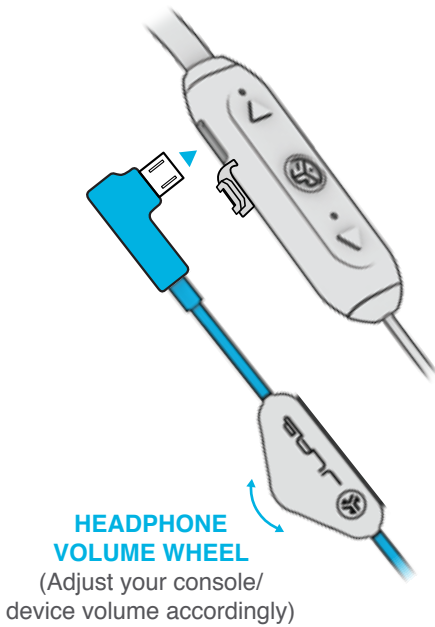
MICROPHONE OFF (MUTE):
Switch Down

VOICE PROMPTS

- "HELLO"**
Power is ON.
- "READY TO PAIR"**
JLab Play earbuds are ready to
connect to your Bluetooth device.
- "YOU'RE CONNECTED"**
JLab Play earbuds are connected
to your Bluetooth device and ready
for use.
- "GOODBYE"**
Power turning OFF.

CONNECTING CONSOLE / DEVICE

- 1 Plug in the Micro USB into the Micro USB input.
- 2 Plug in the AUX input your controller or device.



PC / MAC SETUP IF CONNECTED TO BLUETOOTH

SETUP with PC (Windows 7, 8, or 10):

1. From the Start Menu, select the Control Panel.
2. Select Hardware and Sound category.
3. Select the Sound category.
4. The Playback tab should show JLab Play Gaming Earbuds connected as the Default Device.
5. Click the next tab that says Recording.
6. Right click the JLab Play Gaming Earbuds icon and select "Set as Default Device".
7. Click OK box to save changes.

SETUP with MAC (macOS 10.1 and higher):

1. Open System Preferences and select the Sound icon.
2. Select the Input tab and select "JLab Play".
3. Select Output tab and select "JLab Play".
4. From this screen, set the Output volume to desired level.
5. Closing out of the window will save settings.

NOTES:

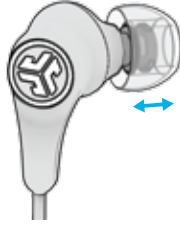
- When using the AUX INPUT, the microphone and game volume will be determined by your console settings. Adjust accordingly.
- The in-line microphone and mute function works in both Bluetooth and AUX INPUT modes.
- The button functions on the earbuds will only work in Bluetooth mode.

FITTING

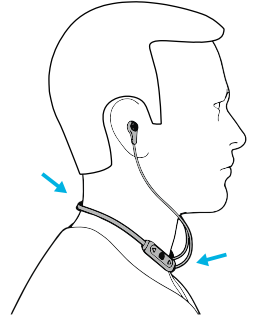
1 Choose ear tip size.



2 Move the earbud to desired location from the Adjustable Tip Placement.



3 Rest the band around the neck with the controls facing the right hand side.



CAUTIONS

- Avoid getting moisture or liquids into the tip of the earbuds or charging port.
- Avoid extreme heat, cold, and humidity.
- Avoid dropping or crushing the earbuds, stressing the cable by rapid pulling or extreme force, or bending the cable at a sharp angle.
- Wax may build up in the earbud tips, lowering the sound quality. Carefully remove the wax with a cotton swab or other small tool to improve the sound quality.
- If you experience discomfort or pain, try lowering the volume or discontinuing use temporarily.
- If you experience regular discomfort while using this product, discontinue use and consult your physician.
- We recommend you treat your earbuds as you would a nice pair of sunglasses and keep them in safe location when not in use.



[Shop products](#) | [Product alerts](#) | [Burn-in your headphones](#)

JLab Audio + Burn-in Tool

