



BORN INNOVATIVE

EN



Thank-you for choosing a **Hoover** washing machine. We are proud to always offer new, innovative and technologically advanced products, with a complete range of home appliances to ensure true assistance in your daily routine.

Carefully read this manual for correct and safe appliance use and for helpful tips on efficient maintenance.



Only use the washing machine after carefully reading these instructions. We recommend you always keep this manual on hand and in good condition for any future owners.

Please check that the appliance is delivered with this instruction manual, warranty certificate, service centre address and energy efficiency label. Also check that plugs, drain hose support hook and liquid detergent or bleach tray (only on some models) are included. We recommend you keep all these components.

FOR U.K. ONLY

On receipt of your appliance please check it carefully for damage. Any damage found must be reported to the delivery driver immediately. Alternatively damage found must be reported to the retailer within 2 days of receipt.

Each product is identified by a unique 16-character code, also called the “serial number”, printed on the sticker. This can be found inside the door opening. This code is a unique code for your product that you will need to register the product warranty, or if you need to contact the Customer Service Centre.

Environmental conditions



This appliance is marked according to the European directive 2012/19/EU on Waste Electrical and Electronic Equipment (WEEE).

WEEE contains both polluting substances (which can cause negative consequences for the environment) and basic components (which can be re-used). It is important to have WEEE subjected to specific treatments, in order to remove and dispose properly all pollutants, and recover and recycle all materials. Individuals can play an important role in ensuring that WEEE does not become an environmental issue; it is essential to follow some basic rules:

- WEEE should not be treated as household waste;
- WEEE should be handed over to the relevant collection points managed by the municipality or by registered companies. In many countries, for large WEEE, home collection could be present.

In many countries, when you buy a new appliance, the old one may be returned to the retailer who has to collect it free of charge on a one-to-one basis, as long as the equipment is of equivalent type and has the same functions as the supplied equipment.

Contents

- 1. GENERAL SAFETY RULES**
- 2. INSTALLATION**
- 3. DETERGENT DRAWER**
- 4. PRACTICAL TIPS**
- 5. MAINTENANCE AND CLEANING**
- 6. PORTHOLE EMERGENCY OPENING**
- 7. REMOTE CONTROL (WI-FI)**
- 8. QUICK USER GUIDE**
- 9. CONTROLS AND PROGRAMS**
- 10. TROUBLESHOOTING AND WARRANTY**

1. GENERAL SAFETY RULES

- This appliances is intended to be used in household and similar applications such as:

- Staff kitchen areas in shops, offices and other working environments;
- Farm houses;
- By clients in hotels, motels and other residential type environments;
- Bed and breakfast type environments.

A different use of this appliance from household environment or from typical housekeeping functions, as commercial use by expert or trained users, is excluded even in the above applications. If the appliance is used in a manner inconsistent with this it may reduce the life of the appliance and may void the manufacturer's warranty. Any damage to the appliance or other damage or loss arising through use that is not consistent with domestic or household use (even if located in a domestic or household environment) shall not be accepted by the manufacturer to the fullest extent permitted by law.

- This appliance can be used by children aged from 8 years and above and persons with reduced physical, sensory or mental capabilities or lack of experience and knowledge if they have been given supervision or instruction concerning use of the appliance

in a safe way and understand the hazards involved.

Children shall not play with the appliance. Cleaning and user maintenance shall not be made by children without supervision.

- Children should be supervised to ensure that they do not play with the appliance.
- Children of less than 3 years should be kept away unless continuously supervised.
- If the supply cord is damaged, it must be replaced by a special cord or assembly available from the manufacturer or its service agent.
- Only use the hose-sets supplied with the appliance for the water supply connection (do not reuse old hose-sets).
- Water pressure must be between 0.05 MPa and 0.8 MPa.
- Make sure carpets or rugs do not obstruct the base or any of the ventilation openings.
- After installation, the appliance must be positioned so that the plug is accessible.
- The maximum load capacity of dry clothes depends on the model used (see control panel).
- To consult the product technical specification please refer to the manufacturer website.

Electrical connections and safety instructions

- The technical details (supply voltage and power input) are indicated on the product rating plate
- Make sure that the electrical system is earthed, complies with all applicable law and that the (electricity) socket is compatible with the plug of the appliance. Otherwise, seek qualified professional assistance.
- The use of converters, multiple sockets or extension cords is strongly advised against
- Before cleaning or maintaining the washing machine, unplug the appliance and turn off the water tap.
- Do not pull on the power cord or appliance to unplug the machine.
- Make sure there is no water in the drum before opening the door.
- Do not expose the washing machine to rain, direct sunlight or other weather elements. Protect from possible freezing.
- When moving, do not lift the washing machine by the knobs or detergent drawer; during transport, never rest the door on the trolley. We recommend two people lift the washing machine.
- In the event of fault and/or malfunction, turn off the washing machine, close the water tap and do not tamper with the appliance. Immediately contact the Customer Service Centre and only use original spare parts. Failure to observe these instruction may jeopardise appliance safety.



WARNING:
water may reach very high temperatures during the wash cycle.

2. INSTALLATION

- Remove the **2** or **4** transportation screws (**A**) on the back and remove the **2** or **4** flat washers, rubber bungs and plastic spacer tubes (**B**) as illustrated in **figure 1**.
- If the washing machine is built-in, unscrew the **3** or **4** transportation screws (**A**) and remove the **3** or **4** flat washers, rubber bungs and plastic spacer tubes (**B**).
- During the removal of the screws occasionally spacer tubes fall inside the product, these can be removed by tilting the product forward and recovering them from the floor or inside the base of the machine.
- Cover the open transportation screw holes with the **2** or **4** plastic caps included in the instruction bag.

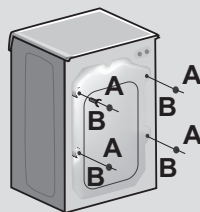


WARNING:
keep packaging materials
away from children.

- Place the corrugated plastic sheet, found on top of the appliance during the unpacking process, into the base of the appliance as shown in **figure 2** (according to the model, consider version **A**, **B** or **C**).

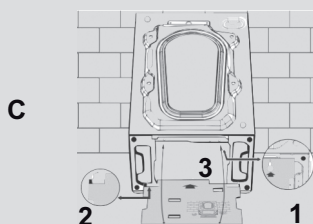
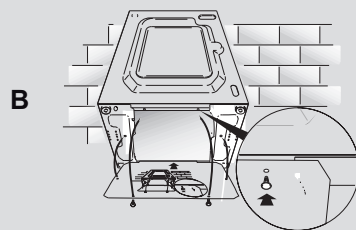
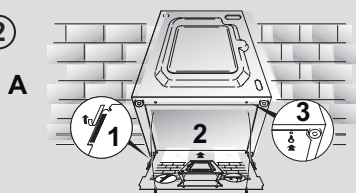
In some models this operation will not be necessary, because the corrugated plastic sheet will be already placed on the bottom of the appliance.

①



EN

②



Hydraulic connections

- Connect the water hose to the water supply tap (**fig. 3**) only using the hose supplied with the appliance (do not reuse old hose-sets).

- Some models may include one or more of the following features:

- **HOT&COLD (fig. 4):**

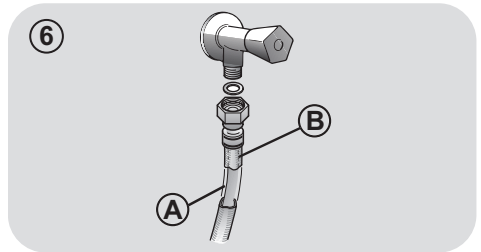
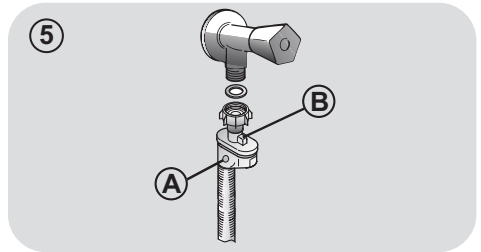
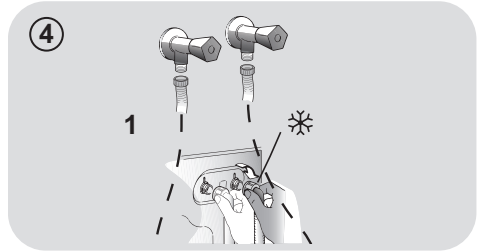
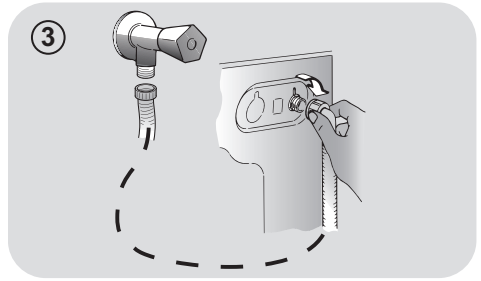
water mains connection settings with hot and cold water for higher energy savings. Connect the grey tube to the cold water tap ❄️ and the red one to the hot water tap. The machine can be connected to the cold water tap only: in this case, some programs may start a few minutes later.

- **AQUASTOP (fig. 5):**

a device located on the supply tube that stops water flow if the tube deteriorates; in this case, a red mark will appear in the window "A" and the tube must be replaced. To unscrew the nut, press the one-way lock device "B".

- **AQUAPROTECT – SUPPLY TUBE WITH GUARD (fig. 6):**

Should water leak from the primary internal tube "A", the transparent containment sheath "B" will contain water to permit the washing cycle to complete. At the end of the cycle, contact the Customer Service Centre to replace the supply tube.



Setting

- The washing machine should be installed in its final position such that the water fill hose is not kinked or trapped. The corrugated drain hose should be inserted into suitable drain pipe of between 50 cm and 85 cm height above the floor using the curved drain hose support. If an under sink connection is used the drain hose must be routed above the sink overflow opening to prevent back siphoning. Care must be taken to avoid kinking or trapping the drain hose (**fig. 7**).
- Level the appliance using the feet as illustrated in **figure 8**:
 - a. turn the nut clockwise to release the screw;
 - b. rotate the foot to raise or lower it until it touches to the floor;
 - c. lock the foot, screwing in the nut, until it tightens against to the bottom of the washing machine.
- Plug in the appliance.

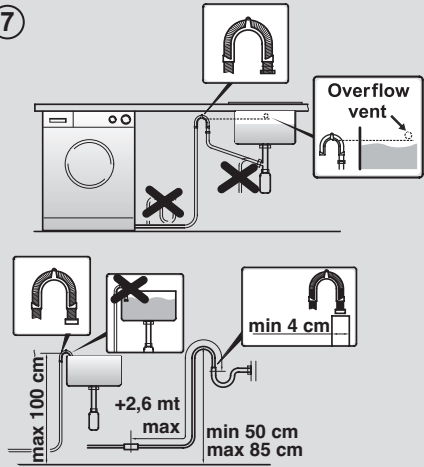


WARNING:

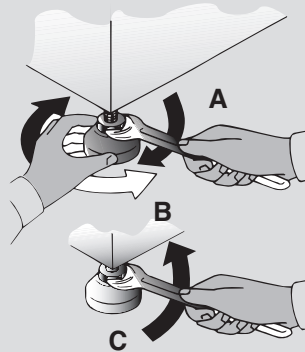
contact the Customer Service Centre should the power cord need replacement.

Installation faults are not covered by the manufacturers warranty.

7



8



3. DETERGENT DRAWER

The detergent draw is split into 3 compartments as illustrated in **figure 9**:

- **compartment "1"**: for prewash detergent;
- **compartment "☼"**: for special additives, softeners, starch fragrances, etc.;



WARNING:

only use liquid products; the washing machine is set to automatically dose additives at each cycle during the last rinse.

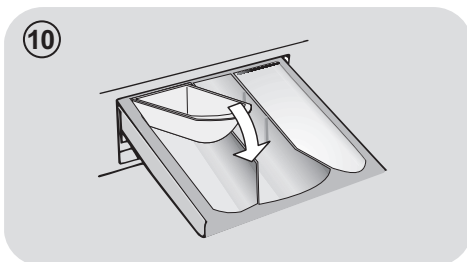
- **compartment "2"**: for washing detergent.

A liquid detergent cup is also included IN SOME MODELS (fig. 10). To use it, place it in **compartment "2"**. This way, liquid detergent will only enter the drum at the right time. The cup can also be used for bleach when the "Rinse" program is selected.



WARNING:

some detergents are not designed for use in the dispenser drawer but are supplied with their own dispenser that is placed in the drum directly.



SOME MODELS are provided with the automatic dosage, this carries out a precise measurement of detergent and softener. For any further information please refer to the specific section on the CONTROLS AND PROGRAMS chapter.

4. PRACTICAL TIPS

Load tips

WARNING: when sorting laundry, make sure:

- have eliminated metallic objects such as hair clips, pins, coins, from laundry;
- to have buttoned pillow cases, closed zips, tied loose belts and long robe ribbons;
- to have removed rollers, hooks or clips from curtains;
- to have carefully read clothing washing labels;
- to have removed any persistent stains using specific detergents.
- When washing rugs, bedcovers or other heavy clothing, we recommend you avoid the spinning cycle.
- To wash wool, make sure the item can be machine washed. Check the fabric label.

Helpful suggestions for the user

A guide environmentally friendly and economic use of your appliance.

Maximise The Load Size

- Achieve the best use of energy, water, detergent and time by using the recommended maximum load size. Save up to 50% energy by washing a full load instead of 2 half loads.

Do you need to pre-wash?

- For heavily soiled laundry only! SAVE detergent, time, water and between 5 to 15% energy consumption by NOT selecting Prewash for slight to normally soiled laundry.

Is a hot wash required?

- Pretreat stains with stain remover or soak dried in stains in water before washing to

reduce the necessity of a hot wash programme. Save energy by using a low temperature wash programme.

Before using a drying programme (WASHER-DRYERS)

- SAVE energy and time by selecting a high spin speed to reduce the water content in laundry before using a drying programme.

Following is a **quick guide** with tips and recommendations on **detergent use at the various temperatures**. In any case, always read the instructions on the detergent for correct use and doses.

When washing heavily soiled whites, we recommend using cotton programs of 60°C or above and a normal washing powder (heavy duty) that contains bleaching agents that at medium/high temperatures provide excellent results.

For washes between 40°C and 60°C the type of detergent used needs to be appropriate for the type of fabric and level of soiling.

Normal powders are suitable for “white” or colour fast fabrics with high soiling, while liquid detergents or “colour protecting” powders are suitable for coloured fabrics with light levels of soiling.

For washing at temperatures below 40°C we recommend the use of liquid detergents or detergents specifically labeled as suitable for low temperature washing.

For washing **wool** or **silk**, only use detergents specifically formulated for these fabrics.

5. MAINTENANCE AND CLEANING

To clean the washing machine exterior, use a damp cloth, avoiding abrasives, alcohol and/or solvents. To maintain a good wash performance we recommend that the soap drawer and pump filters are regularly cleaned. A monthly service wash, using a proprietary cleaner is also recommended.

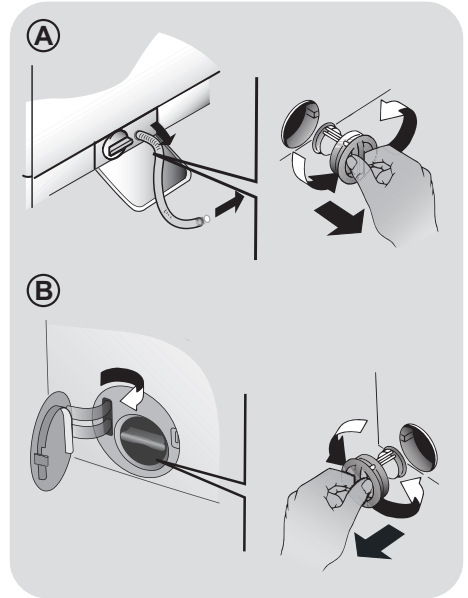
Drawer cleaning

- We recommend you clean the drawer to avoid accumulating detergent and additive residue.
- To do this, extract the drawer using slight force, clean it with running water and reinsert it in its housing.
- Ensure the siphon cap is correctly refitted.

Filter cleaning

- The washing machine comes with a special filter able to trap large residue, such as buttons or coins, which could clog the drain (according to the model, consider version **A** or **B**).
- **ONLY AVAILABLE ON CERTAIN MODELS:** pull out the corrugated hose, remove the stopper and drain the water into a container.
- Ensure all the water has been emptied from the drum.
- Before unscrewing the filter, we recommend you place an absorbent cloth under it to keep the floor dry. A small amount of water will come out of the filter as you remove it - this is normal.
- Turn the filter counter-clockwise to the limit stop.
- Remove and clean the filter; when finished, replace it turning it clockwise. The filter handle will be locked when it is not possible to turn any further and the handle is horizontal. Smearing a small amount of liquid soap on the filter seal will help refitting.

- Repeat the previous steps in reverse order to reassemble all parts.



Suggestions for moves or prolonged disuse

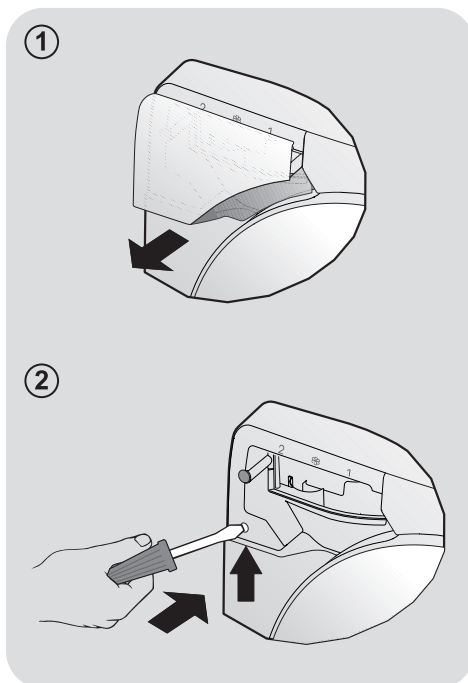
- Should the washing machine be stored in an unheated room for a long period of time, drain all water from tubes.
- Unplug the washing machine.
- Detach the tube from the drainage system and clip on the rear of the machine and lower it, fully draining water into a bowl.
- Secure the drain tube with the drainage system and clip on the rear of the machine when finished.
- Keep the door glass and gasket clean.

The manufacturers warranty only covers faults within the product of a mechanical or electrical nature. Faults caused by handling, installation or miss use are not covered and may incur a charge for any repair visit to resolve.

6. PORTHOLE EMERGENCY OPENING

Should the porthole be locked due to power Shortage (if the plug is removed before the end of the cycle, re-plug it and turn off the machine by pressing **ON/OFF** button to open the door) or as a result of a fault, it can be opened according to the following emergency unlocking procedure:

1. Disconnect the machine from the power socket.
2. Ensure that the water level is below the porthole before opening it, to prevent any flooding. Otherwise, drain excess water through the drain tube and collect it in a bucket.
3. Take out the detergent compartment (**fig. 1**).
4. Insert a screw driver or a similar tool for about two centimeters of depth (in order to fit it into the inner hook, but not fully down). Lever up and simultaneously open the porthole as shown in **figure 2**.



7. REMOTE CONTROL (WI-FI)

This appliance is equipped with **Wi-Fi** technology that allows you to control it remotely via App.

MACHINE ENROLLMENT (ON APP)

- Download the **Hoover Wizard** App on your device.

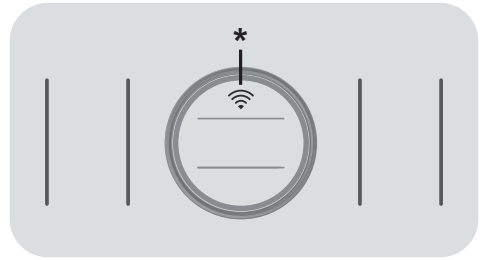
The **Hoover Wizard App** is available for devices running both **Android** and **iOS**, both for tablets and for smartphones.

Get all the details of the **Wi-Fi** functions by browsing the App in **DEMO** mode.

- Open the App, create the user profile (or log-in if it is already created previously) and enroll the appliance following the instructions on the device display or the "**Quick Guide**" attached on the machine.

TO ENABLE REMOTE CONTROL

- Check that the router is switched on and connected to the Internet.
- Load the laundry, close the door, add the detergent if it's necessary.
- Switch on the washing machine using the **ON/OFF** button.
- Press the **REMOTE CONTROL** button: the door is locked, buttons on the control panel are disabled. Only **REMOTE CONTROL** and **ON/OFF** buttons remain operative.
- Open the **Hoover Wizard** App and start the cycle. At the end, switch off the machine with the **ON/OFF** button (or press the **REMOTE CONTROL** button) to unlock the door.



* **REMOTE CONTROL** button

TO DISABLE REMOTE CONTROL

- To exit the **REMOTE CONTROL** mode during a cycle, press the same button on the machine. You will regain local control over the control panel of the machine and, if the cycle is paused, the door can be opened.
- Check that the water level is below the door before opening it, to avoid flooding.
- When the door is closed, by pressing the **REMOTE CONTROL** button again, you will be able to get control of the machine from the App.

8. QUICK USER GUIDE

This appliance automatically adjusts the level of the water to the type and quantity of washing. This system gives a reduction in energy consumption and a saving in washing times.

Program selection

- Turn on the appliance and select the required program.
- Adjust the washing settings if necessary and select the required options.

DRYING (WASHER-DRYERS only)

If you would like the drying cycle to begin automatically after washing, select the washing programme required and select the drying cycle. Or you can finish the wash and then select the drying programme.

- Press the **START/PAUSE** button to start the program.
- At the end of the program, the message "END" will appear on the display (on some models, all wash stage indicators lights will turn on).
- Turn off the washing machine.

For any type of wash, see the program table and follow the operating sequence as indicated.

Technical data

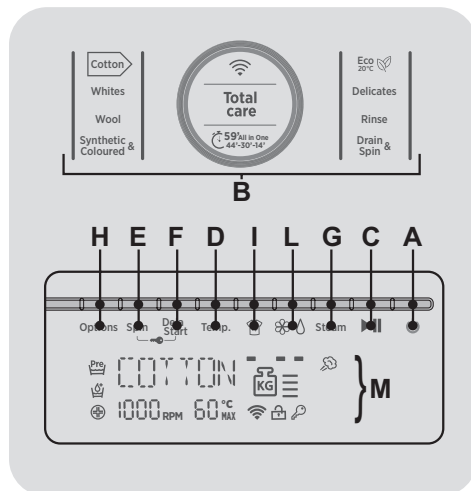
Water pressure:

min 0.05 Mpa / max 0.8 Mpa
(0.05 MPa dispenses approximately 1 litre of water in 10 seconds)

Spin r.p.m.: See rating plate.

Power input / Power current fuse amp / Supply voltage: See rating plate.

9. CONTROLS AND PROGRAMS



- A ON/OFF button
- B Touch Control (programmes selection)
- C START/PAUSE button
- D TEMPERATURE SELECTION button
- E SPIN SELECTION button
- F DELAY START button
- G STEAM button
- H OPTIONS button
- I STAIN LEVEL button
- L CARE DOSE button
- E+F CONTROL PANEL LOCK
- M DISPLAY



WARNING:

Don't touch the display (and the Touch Control) while inserting the plug because the machine calibrates the systems during the first seconds: touching the display, the machine couldn't work properly. In this case, remove the plug and repeat the operation.

To select the different functions, you can press both the icons and the buttons above them.

ON/OFF button

- To turn the appliance on and off, press the **ON/OFF** button.

At the end of the cycle, do not forget to turn off the appliance by the **ON/OFF** button, disconnect the plug and close the water faucet.

First starting

- Language setting

- After connecting the machine to the network and turning it on, press the **STAIN LEVEL** or **CARE DOSE** button to display the available languages.
- Select the desired language pressing the **START/PAUSE** button.

- Change the language

If you want to change the setting language you will have to press simultaneously **STAIN LEVEL** and **CARE DOSE** buttons for about **3 seconds**. **ENGLISH** will appear on the display, and you will be able to choose a new language.

Through this process all saved settings will be cancelled.

- Water Hardness setting

This washing machine, thanks to the **CARE DOSE** system, is able to dose your detergent and fabric softener automatically. The optimum quantity of detergent and/or fabric softener depending on the water hardness, on the load quantity and on the chosen cycle (cotton, delicates, etc...)

The default setting for the water hardness is set in the factory at level 2 (HL2) as this satisfies the requirements of the majority of users.

Water Hardness level:

HL1 = LOW (0-12 °fH o 0-7 °dH)
HL2 = MEDIUM (13-30 °fH o 8-17 °dH)
HL3 = HIGH (≥ 30 °fH o ≥ 17 °dH)

- To confirm the default water hardness, hold for few seconds the **START/PAUSE** button.
- If you want to change the setting water hardness, you will have to hold the **CARE DOSE** button for few seconds. The **WATER HARDNESS** sign will appear on the display, and by holding again the **CARE DOSE** button, you will be able to choose the new water hardness level.
- Once chosen the water hardness level, hold for few seconds the **START/PAUSE** button to confirm

Check the water hardness **LEVEL** of your city at your water supply company before using the **CARE DOSE** function.

Touch Control (programmes selection)

- After turning the appliance on, you will be able to select the desired programme by pressing the relevant icon that will light up. The display will show the description and the relevant parameters.
- To start the selected cycle with the preset parameters, press **START/PAUSE**. When the programme is running, the display will show the time to elapse.
- Moreover, If you want to modify the chosen program, press the desired options buttons, modify the default parameters and then press **START/PAUSE** button to start the cycle.

Only the options compatible with the set programme can be selected.

When the appliance is turned on again, the last programme will be shown, memorising the previously set values.

START/PAUSE button

Close the porthole **BEFORE** pressing the **START/PAUSE** button.

- Press to start the set cycle.

After starting the washing machine you need to wait a few seconds before the appliance starts the programme.

CYCLE DURATION

- When a programme is selected the display automatically shows the cycle duration, which can vary, depending on the options selected.

- Once the programme has started you will be kept informed constantly of the time remaining to the end of the wash.
- The appliance calculates the time to the end of the selected programme based upon a standard loading, during the cycle, the appliance corrects the time to that applicable to the size and composition of the load.

ADD OR REMOVE ITEMS AFTER THE PROGRAMME HAS STARTED (PAUSE)

- Press **START/PAUSE** (the display shows **PAUSE**).

Ensure that the water level is below the porthole before opening it, to prevent any flooding.

- After adding or removing items, close the porthole and press **START/PAUSE** (the programme will resume from when it was interrupted).

CANCELLING THE SET PROGRAMME

- To cancel the programme, press the **ON/OFF** button for about **2** seconds until the display switches off.

TEMPERATURE SELECTION button

- By this option you can change the temperature of the washing cycles.

To prevent damage to the fabrics, it is not possible to increase the temperature above the maximum value set for each programme.

SPIN SELECTION button

- By this option you can reduce the maximum spin speed for the set programme, until it is completely excluded.
- If the label does not show any instructions, you can spin to the maximum speed set for the programme.

To prevent damage to the fabrics, it is not possible to increase the speed over the maximum one set for each programme.

- It is possible to modify the spin speed at any time, without shifting the machine to **PAUSE**.

An over dosing of detergent can cause excessive foaming. If the appliance detects the presence of excessive foam, it may exclude the spinning phase or extend the duration of the programme and increase water consumption.

The machine is fitted with a special electronic device, which prevents the spin cycle should the load be unbalanced. This reduces the vibration, improves noise reduction and prolongs the life of the washing machine.

DELAY START button

- This button allows you to pre-programme the wash cycle to delay the start of the cycle for up to **24 hours**.
- To delay the start use the following procedure:
 - Set the required programme.
 - Press the button once to activate it (**0:00h** appears on the display) and then press it again to set a **30 minutes** delay (**0:30h** appears on the display). The pre-set delay increases by **30 minutes** each time the button is pressed, until **h24** appears on the display, at which point pressing the button again will reset the delay start to zero.
 - Confirm by pressing the **START/PAUSE** button (the light on the display starts to flash). The countdown will begin and when it has finished the programme will start automatically.

- It is possible to cancel the delay start by pressing the **ON/OFF** button (for at least **3 seconds**).

STEAM button

- This button allows a specific treatment to follow certain wash cycles (please refer to the program table).
- The steam function works by relaxing creases in wet garments and as a result reduces the time needed to iron these items.
- The fibres are regenerated and refreshed by removing bad smells.
- Every program provides a dedicated steam treatment in order to ensure the maximum cleaning efficiency according to the items fabric type and colour.

This option must be selected before pressing the START/PAUSE button.

OPTIONS button

This button allows you to choose between three different options:

- PREWASHING

- This option allows you to make a prewash and it is particularly useful for heavily soiled loads (can be used only on some programmes as shown in the table of programmes).

If the detergent Autodose system is off, to make a prewash, you need to pour the powder detergent directly into the drum. In this case, it is suggested to use only the 20% of the quantity reported on the detergent package.

- AQUAPLUS

- This option (available only in some programmes) allows you to wash the load in a much larger quantity of water and this, together with the new combined action of the drum rotation cycles, where water is filled and emptied, will give you garments which have been cleaned and rinsed to perfection so that the detergent dissolves completely, ensuring an efficient cleaning action.
- This function is for the people with delicate and sensitive skin.
- This function can be used for children's items and for washing of very dirty items, for which you are required to use a lot of detergent, or for washing of towels whose fibres have the tendency to hold the detergent.

- HYGIENE

Activated when you set 60°C of temperature. This option allows deep cleaning of your clothes by maintaining the same temperature for the whole wash.

If an option is selected that is not compatible with the selected programme then the option indicator light first flashes and then goes off.

STAIN LEVEL button

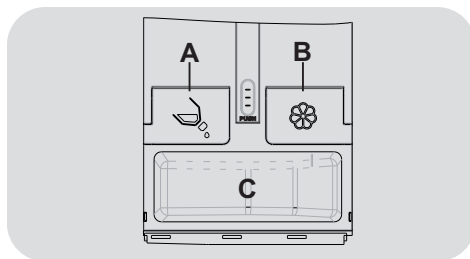
- Once the programme has been selected the wash time set for that programme will be automatically shown.
- This option allows you to choose between 3 levels of wash intensity modifying the length of the programme, depending on how much the fabrics are soiled (can only be used on some programmes as shown in the table of programmes).

CARE DOSE BUTTON (AUTODOSE SYSTEM)

SOME MODELS are provided with the automatic dosage, that carries out a precise dosage of detergent and softener, up to 20 washing cycles*, providing a perfect cleaning of your garments. This way water and energy wastes are reduced, as the right detergent and softener quantities are perfectly to the milligram dosed, according to the type of garment, to the weight of the clothes and to the water hardness.

* Estimate based on a medium load and a low water hardness level.

The drawer is divided into three compartment, as indicated in the **figure**:



- A = for LIQUID washing detergent
- B = for softener
- C = for powder detergent (**NO AUTODOSE**)



WARNING:

Autodose system can be used only with LIQUID detergent and softener . NOT ALLOWED to use powder or other additives.

The default setting for the autodose system is set in the factory to carry out both the detergent and softener autodose.

- Pressing the **CARE DOSE** button you will be able to set the autodose function, according to your needs.
- If you want to change the factory settings, hold the **CARE DOSE** button, until the dedicated icons are blinking. Afterward, you can choose the desired setting:
 - Pressing **once** the **CARE DOSE** button, the **ONLY** softener autodose will be **deselected**.
 - Pressing **twice** the **CARE DOSE** button, the **ONLY** detergent autodose will be **deselected**.
 - Pressing **three times** the **CARE DOSE** button, both the detergent and softener autodose will be **deselected**.
 - Pressing **four times** the **CARE DOSE** button to go back to the factory settings (both the detergent and softener autodose are ON).



WARNING:

It's necessary to clean and water the autodose drawer every time the softener/detergent drawers are refilled or the type of softener/detergent are changed.

Drawer must be closed properly during the whole washing cycle, otherwise dosing and warning system cannot work properly.

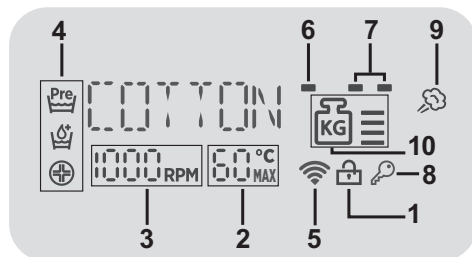
CONTROL PANEL LOCK

- The simultaneous press of **SPIN SELECTION** and **DELAY START** buttons for about **3 seconds** can lock the buttons. In this way, you can avoid involuntary or accidental modifications.
- The button lock can be cancelled by simply pressing the two activation buttons and turning the appliance off.

If there is any break in the power supply while the machine is operating, a special memory stores the selected programme and, when the power is restored, it continues where it left OFF.

Description of the DISPLAY

The display's indicator system allows you to be constantly informed about the status of the machine.



1) DOOR LOCKED INDICATOR LIGHT

- The indicator light is illuminated when the door is fully closed.

Close the door **BEFORE** selecting the **START/PAUSE** button.

- When **START/PAUSE** is pressed on the machine with the door closed, the indicator will flash momentarily and then illuminate.

If the door is not properly closed, the light will continue to flash for about **7 seconds**, after which the start command will be automatically delete. In this case, close the door in the proper way and press the **START/PAUSE** button.

- Wait until the **DOOR LOCKED** light has gone out before opening the door.

2) WASH TEMPERATURE

This show the washing temperature of the selected programme that can be changed (where allowed) by the relevant button.

3) SPIN SPEED

This show the spin speed of the selected programme that can be changed or omitted by the relevant button.

4) OPTIONS INDICATOR LIGHTS

The indicator lights show the options that can be selected by the relevant buttons.

5) Wi-Fi (some models only)

• On models equipped with Wi-Fi, it indicates the status of the connection. It could be:

- **FIXED ON:** remote control enabled.
- **SLOW FLASHING:** remote control disabled.
- **QUICK FLASHING FOR 3 SECONDS, THEN OFF:** the machine cannot connect to the home Wi-Fi network or has not yet been enrolled on the App.
- **SLOW BLINKING FOR 3 TIMES, THEN OFF FOR 2 SECONDS:** reset of the Wi-Fi network (during enrollment on the App).
- **ON FOR 1 SECOND, THEN OFF FOR 3 SECONDS:** the door is open. Remote control cannot be activated.

• For all the information about the functionality and the instructions for an easy configuration of the Wi-Fi, please refer to:
go.candy-group.com/wizard-dualbe

6) STAIN LEVEL INDICATOR LIGHT

The indicator light shows the selection of the relevant option.

7) AUTODOSE INDICATORS (CARE DOSE)

They indicate the activation of the detergent and/or softener autodose.

8) KEY LOCK INDICATOR LIGHT

The indicator light show that the keys are locked.




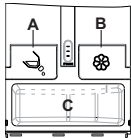












9) STEAM INDICATOR LIGHT

The indicator light shows the selection of the relevant option.

10) Kg MODE (*function active only on certain programmes*)

- For the programmes where the "**Kg MODE**" function is active, the appliance in the first minutes it calculates the real laundry loaded, updating the levels on the display in real time. Every levels shown on the display is the 25% of the maximum loading capacity.
When a programme is selected the maximum capacity suggested is shown on the display.
- Through every wash phase "**Kg MODE**" allows to monitor information on the wash load in the drum and in the first minutes of the wash it:
 - adjusts the amount of water required;
 - determines the length of the wash cycle;
 - controls rinsing according to the type of fabric selected to be washed it;
 - adjusts the rhythm of drum rotation for the type of fabric being washed;
 - recognizes the presence of lather, increasing, if necessary, the amount of water during rinsing;
 - adjusts the spin speed according to the load, thus avoiding any imbalance.

Table of programmes

 PROGRAMME		 (MAX.) * (see control panel)								 °C (MAX.)	1) 		
		6 kg	7 kg	8 kg	9 kg	10 kg	11 kg	12 kg	13 kg				
 Eco 20°C	ECO 20°C 2) 3)	6	7	8	9	10	11	12	13	20°	●	●	
	DELICATES 2) 3)	2	2,5	2,5	2,5	2,5	2,5	3	3	40°	●	●	
	RINSE	-	-	-	-	-	-	-	-	-		●	
	DRAIN & SPIN	-	-	-	-	-	-	-	-	-			
 59' All in One 44'-30'-14'	ALL IN ONE 59'	6	7	8	9	10	11	12	13	40°	●	●	
	RAPID	44'	3	3,5	3,5	3,5	3,5	3,5	4	4	40°	●	●
		30'	2	2,5	2,5	2,5	2,5	2,5	3	3	30°	●	●
		14'	1	1	1,5	1,5	1,5	1,5	2	2	30°		
	SYNTHETIC & COLOURED 2) 3)	3	3,5	4	4,5	5	5,5	6	6,5	40°	●	●	
	WOOL	1	1	2	2	2	2	2,5	2,5	40°	●	●	
	WHITES 2) 3)	6	7	8	9	10	11	12	13	90°	●	●	
	COTTON** 2) 3)	6	7	8	9	10	11	12	13	60°	●	●	
Total care	TOTAL CARE 2) 3)	3	3,5	4	4,5	5	5,5	6	6,5	30°	●	●	
	REMOTE CONTROL Position that you have to select when you want to enable remote control through the App (via Wi-Fi).												

Please read these notes:

* Maximum load capacity of dry clothes, according to the model used (see control panel).

■ Programmes with PREWASH option available.

1) When a program is selected, on the display is shown the recommended wash temperature that can be reduced (where allowed) by the relevant button. However it's not possible to increase the temperature beyond the maximum value given.

2) For the programmes shown you can adjust the duration and intensity of the wash using the STAIN LEVEL button.

3) Steam Function Available.

**** STANDARD COTTON PROGRAMMES
ACCORDING TO (EU) No 1015/2010
and No 1061/2010.**

**COTTON PROGRAMME WITH A
TEMPERATURE OF 60°C.**

**COTTON PROGRAMME WITH A
TEMPERATURE OF 40°C.**

These programmes are suitable to clean normally soiled cotton laundry and they are the most efficient programmes in terms of combined energy and water consumptions for washing cotton laundry.

These programmes have been developed to be compliant with the temperature on the wash label on the garments and the actual water temperature may slightly differ from the declared temperature of the cycle.

Programmes selection

To clean different types of fabrics and various levels of dirt, the washing machine has specific programs to meet every need of washing (see table of programmes).

ECO 20°C

This innovative programme, allows you to wash different fabrics and colours together, such as cottons, synthetics and mixed fabrics at only 20°C and provides an excellent cleaning performance. Consumption on this program is about 40% of a conventional 40°C cottons wash.

DELICATE

This program has reduced periods of drum rotation during the cycle and is particularly suitable for washing delicate fabrics. The wash cycle and rinses are carried out with a high level of water to ensure the best performance.

RINSE

This program performs 3 rinses with an intermediate spin (which can be reduced or excluded by using the appropriate button). It is used for rinsing any type of fabric, for example after a wash carried out by hand.

DRAIN & SPIN

The program completes the drain and a maximum spin. It is possible to delete or reduce the spin through the SPIN SELECTION button.

ALL IN ONE 59' / RAPID 44'-30'-14'

Pressing the button repeatedly you can choose one of 4 rapid programs available.

- ALL IN ONE 59'

This program allows you to wash mixed fabrics such as cottons, synthetics and mixed fabrics in only 59 minutes, using the full load of the washing machine, at 40°C (or less) temperature. This program is particularly suited to slightly dirty fabrics.

- RAPID 44'-30'-14'

Washing cycle suggested for low loads and slightly dirty. With this program it is recommended to reduce the quantity of detergent normally used, in order to avoid unnecessary waste.

SYNTHETIC AND COLOURED

This programme allows you to wash different types of fabrics and different colours all together. The rotation movement of the drum and the water levels are optimized, both during the washing and the rinsing phase. The accurate spin action, ensures a reduced formation of creases in the fabrics. Thanks to **ACTIVE CARE** technology, a complete washing cycle optimization is possible.



WARNING:

New coloured garments should be washed separately for at least 5 or 6 washes.

Certain large dark items such as jeans and towels should always be washed separately.

Never mix NON COLOURFAST fabrics.

WOOL

This program performs a wash cycle dedicated to the wool fabrics that can be washed in a washing machine, or the articles to be washed by hand.

WHITES

Made to have a perfect washing. The final spin at maximum speed gives more efficient removal.

COTTON

This program is suitable to clean normally soiled cotton laundry and it is the most efficient program in terms of combined energy and water consumptions for washing cotton laundry.

TOTAL CARE

This new program allows to wash together garments made of different colors and fabrics, keeping the original aspect and consistence of clothes. The new **ACTIVE CARE** technology, through a perfect mix of water and detergent, guarantees the maximum care of your clothes, at a 30°C temperature with a perfect washing performance.

REMOTE CONTROL

Position that you have to select when you want to enable / disable remote control through the App, via Wi-Fi. In this case, the start of cycle will take place through the App commands. More details in the **REMOTE CONTROL (Wi-Fi)** section.

10. TROUBLESHOOTING AND WARRANTY

If you believe the washing machine is not working correctly, consult the quick guide provided below which includes some practical tips on how to fix the most common problems.

ERROR CODE FORMAT

- **Models with a display:** the error is shown by a number preceded by the letter “E” (example: E2 = Error 2).
- **Models without display:** an error is shown by a sequence of flashes of every LED. The error code is shown by the number of flashes followed by a pause of 5 seconds (example: two flashes – pause 5 seconds – two flashes – repeating = Error 2).

Error shown	Possible causes and practical solutions
E2 (with display) 2 flashes of the LEDs (without display)	The machine cannot load water.
	Make sure the water supply tap is open.
	Make sure the water supply hose isn't bent, kinked or trapped.
	Make sure the drain pipe is at the proper height (see installation section).
E3 (with display) 3 flashes of the LEDs (without display)	Close the water supply tap, unscrew the filler hose from the back of the washing machine and make sure the “anti-sand” filter is clean and not blocked.
	The washing machine does not drain water.
	Make sure the filter is not clogged.
E4 (with display) 4 flashes of the LEDs (without display)	Make sure the drain hose isn't bent, kinked or trapped.
	Make sure the home drainage system is not blocked and is allowing water to flow through without obstruction. Try to drain the water in the sink.
E7 (with display) 7 flashes of the LEDs (without display)	There is too much foam and/or water.
	Ensure the correct amount of detergent is being used and the detergent is designed for use in a washing machine.
Any other code	Door problem.
	Make sure the door is correctly closed.
	Make sure the clothes inside the drum are not preventing the door from closing fully.
	If the door is locked, turn off and unplug the washing machine from the electrical supply socket, wait 2-3 minutes and reopen the door.
	Turn off and unplug the washing machine, wait a minute. Turn on the machine and restart a program. If the error occurs again contact an Authorised Customer Service Centre directly.

OTHER ANOMALIES

Problem	Possible causes and practical solutions
<i>The washing machine does not work / start</i>	Make sure the product is plugged into a working supply socket.
	Make sure power is on.
	Make sure the wall socket is working, testing it with another appliance such as a lamp.
	The door may not be correctly closed: open and close it again.
	Check whether the required program was correctly selected and the start button pressed.
<i>Water leaked on the floor near the washing machine</i>	Make sure the washing machine is not in pause or time delay mode.
	This may be due to a leak from the seal between the tap, supply hose and fill valve; in this case, replace it and tighten the hose connections correctly.
<i>The washing machine does not spin</i>	Make sure the front filter is correctly closed.
	<p>The machine is fitted with a detection system that protects the load and product from damage if the load is not balanced before spinning. This may result in:-</p> <ul style="list-style-type: none"> • The machine attempts to balance the load, increasing the time of spin. • Reduction of the speed of spin to decrease vibrations and noise. • The spin cycle aborting to protect the machine and load. <p>If this is experienced remove the load de-tangle it, reload it and restart the spin program.</p>
	This could be due to the fact that water has not been completely drained: wait a few minutes. If the problem persists, see Error 3 section.
	Some models include a "no spin" function: make sure it is not selected.
	Check which options are selected and their effect on the spin cycle.
<i>Strong vibrations / noises are heard during the spin cycle</i>	Excessive detergent can impede the spin cycle, ensure the correct amount of detergent is being used.
	The washing machine may not be fully levelled: if necessary, adjust the feet as indicated in the specific section.
	Make sure transport screws, rubber bungs and spacer tubes were removed.
Make sure there are no foreign objects inside the drum (coins, hinges, buttons, etc...).	

The standard manufacturer warranty covers faults caused by electrical or mechanical faults in the product due to an act or omission of the manufacturer. If a fault is found to be caused by factors outside the product supplied, miss-use or as a result of the instructions on use not being followed, a charge may be applied.

The use of ecological detergents without phosphates may cause the following effects:

- **cloudier rinse drain water:** This effect is tied to the suspended zeolites which do not have negative effects on rinse efficiency.
- **white powder (zeolites) on laundry at the end of the wash:** this is normal, the powder is not absorbed by fabric and does not change its colour.
To remove the zeolites, select a rinse programme. In the future consider using slightly less detergent.
- **foam in the water at last rinse:** this does not necessary indicate poor rinsing. Consider using less detergent in future washes.
- **abundant foam:** This is often due to the anionic surfactants found in the detergents which are hard to eliminate from laundry.
In this case, do not re-rinse to eliminate these effects: it will not help at all.
We suggest conducting a maintenance wash using a proprietary cleaner.

If the problem persists or if you suspect a malfunction, immediately contact an Authorised Customer Service Centre.

It is always recommended to use original spare parts, that are available at our Authorised Customer Service Centres.

Warranty


The product is guaranteed under the terms and conditions stated on the certificate included with the product. The certificate has to be stored so as to be shown to the Authorized Customer Service Centre in case of need. You can also check the warranty conditions on our web site. To obtain assistance, please fill in the form on-line or contact us at the number indicated on the support page of our web site.

By placing the  mark on this product, we are confirming compliance to all relevant European safety, health and environmental requirements which are applicable in legislation for this product.

The manufacturer declines all responsibility for any printing errors in the booklet included with this product. Moreover, it also reserves the right to make any changes deemed useful to its products without changing their essential characteristics.

WIRELESS PARAMETERS

Parameter	Specifications (Wi-Fi)	Specifications (Bluetooth)
Wireless Standard	802.11 b/g/n	Bluetooth v4.2
Frequency range	2,412 GHz. - 2,484 GHz.	2,412 GHz. - 2,484 GHz.
Max Trasmit Power	802.11b, DSSS 1 Mbps = +19.5 dBm	Basic data Rate: RF Transmit Power (Typ): +4 dBm Enhanced data Rate: RF Transmit Power (Typ): +2 dBm BLE RF Transmit Power (Typ): +7.5 dBm
	802.11b, CCK 11 Mbps = +18.5 dBm	
	802.11g, OFDM 54 Mbps = +18.5 dBm	
	802.11n, MCS7 = +14 dBm	
Minimum Receiving Sensivity	802.11b = 1024 bytes, -80 dBm	Basic data Rate: Sensivity @ 0.1% BER: -98 dBm Enhanced data Rate: Sensivity @ 0.01% BER: -98 dBm BLE Sensivity @ 0.1% BER: -98 dBm
	802.11g = 1024 bytes, -70 dBm	
	802.11n = 1024 bytes, -65 dBm	
	802.11n HT40 = 1024 bytes, -65 dBm	

With this the **Candy Hoover Group Srl**, declares that this appliance marked with  complies with the essential requirements of the Directive 2014/53/EU. To receive a copy of the declaration of conformity, please contact the manufacturer at: www.candy-group.com

