

Bissell®

STAINEXPERT 5 **USER GUIDE**



44L65

IMPORTANT SAFETY INSTRUCTIONS

READ ALL INSTRUCTIONS BEFORE USING YOUR APPLIANCE.

Unplug from outlet when not in use and before conducting maintenance. When using an electrical appliance, basic precautions should be observed, including the following:

WARNING

TO REDUCE THE RISK OF FIRE, ELECTRIC SHOCK, OR INJURY:

- » This appliance can be used by children aged from 8 years and above and persons with reduced physical, sensory or mental capabilities or lack of experience and knowledge if they have been given supervision or instruction concerning use of the appliance in a safe way and understand the hazards involved. Cleaning and user maintenance shall not be made by children without supervision.
- » Children should be supervised to ensure that they do not play with the appliance.
- » Keep hair, loose clothing, fingers, and all parts of body away from openings and moving parts of the appliance and its accessories.
- » Unplug from electrical socket when not in use, before cleaning, maintaining or servicing the appliance, and if your appliance has an accessory tool with a moving brush, before connecting or disconnecting the tool.
- » If the supply cable is damaged, it must be replaced by the manufacturer, its service agent, or similarly qualified person in order to avoid a hazard.
- » Do not run appliance over cable.
- » Use only the type and amount of liquids specified under the operations section of this guide.
- » Do not leave appliance when plugged in.
- » Do not use with damaged cable or plug.
- » Do not pull or carry by cable, use cable as a handle, close door on cable, or pull cable around sharp edges or corners.
- » Keep cable away from heated surfaces.
- » To unplug, grasp the plug, not the cable.
- » Do not handle plug or appliance with wet hands.
- » Turn off all controls before unplugging.
- » Hold plug when rewinding onto cord reel. Do not allow plug to whip when rewinding.
- » Plastic film can be dangerous. To avoid danger of suffocation, keep away from children.
- » Use only as described in this user guide.
- » Use only manufacturer's recommended attachments.
- » Do not immerse in water or liquid.
- » If appliance is not working as it should, has been dropped, damaged, left outdoors, or dropped into water; do not attempt to operate it and have it repaired at an authorized service center.
- » Do not put any object into openings.
- » Do not use with any opening blocked; keep free of dust, lint, hair, and anything that may reduce air flow.
- » Use extra care when cleaning on stairs.
- » Do not use to pick up flammable or combustible liquids, such as petroleum, or use in areas where they may be present.
- » Do not pick up toxic material (chlorine bleach, ammonia, drain cleaner, etc.)
- » Do not use appliance in an enclosed space filled with vapours given off by oil base paint, paint thinner, some mothproofing substances, flammable dust, or other explosive or toxic vapours.
- » Do not pick up hard or sharp objects such as glass, nails, screws, coins, etc.
- » Keep appliance on a level surface.
- » Do not pick up anything that is burning or smoking, such as cigarettes, matches, or hot ashes.
- » If your appliance has a motorized brushroll, do not leave machine running in the same spot without the handle fully upright.
- » Do not use outdoors.
- » Always connect to a properly earthed electrical socket.
- » Do not modify earthed plug.
- » Liquid must not be directed towards equipment containing electrical components.
- » Do not immerse. Use only on surfaces moistened by the cleaning process. Use only BISSELL cleaning products intended for use with this machine.
- » Always install float before any wet pick-up operation.
- » If your appliance is fitted with a nonrewireable BS 1363 plug it must not be used unless a 13 amp (ASTA approved to BS 1362) fuse is fitted in the carrier contained in the plug. Spares may be obtained from your BISSELL supplier. If for any reason the plug is cut off, it must be disposed of, as it is an electric shock hazard should it be inserted into a 13 amp socket.

SAVE THESE INSTRUCTIONS

FOR OPERATION ON A 220-240 VOLT A.C. 50-60 HZ POWER SUPPLY ONLY.

This model is for household use only.

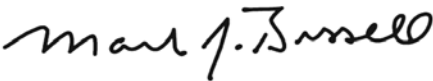
Thanks for buying a BISSELL deep cleaner

We're glad you purchased a BISSELL deep cleaner. Everything we know about floor care went into the design and construction of this complete, high-tech home cleaning system.

Your BISSELL deep cleaner is well made, and we back it with a limited two-year guarantee. We also stand behind it with a knowledgeable, dedicated Consumer Care department, so, should you ever have a problem, you'll receive fast, considerate assistance.




My great-grandfather invented the floor sweeper in 1876. Today, BISSELL is a global leader in the design, manufacture, and service of high quality homecare products like your BISSELL deep cleaner.

Thanks again, from all of us at BISSELL.



Mark J. Bissell
Chairman & CEO

Safety Instructions.....	2
Product View.....	4
Assembly.....	5
Operations.....	6-9
Maintenance & Care.....	10
Troubleshooting.....	11
Guarantee.....	12
Consumer Care.....	12

	<p>WARNING</p>	<p>AN ACTION OR ATTENTION IS NEEDED TO THIS AREA IN ORDER TO REDUCE THE RISK OF ELECTRIC SHOCK, FIRE, OR INJURY</p>
	<p>GUIDE</p>	<p>READ USER GUIDE FOR COMPLETE SAFETY AND USER INSTRUCTIONS</p>
	<p>WEEE</p>	<p>DO NOT THROW THE APPLIANCE AWAY WITH THE NORMAL HOUSHOLD WASTE AT THE END OF ITS LIFE, BUT HAND IT IN AT AN OFFICIAL COLLECTION POINT FOR RECYCLING. BY DOING THIS YOU WILL HELP TO PRESERVE THE ENVIRONMENT.</p>

Product View

- 1 Handle
- 2 Handle Assembly
- 3 Upper Body Assembly
- 4 Carry Handle
- 5 Lower Body Assembly
- 6 Ready Tools™ Dial
- 7 Belt Access Door
- 8 Removable Nozzle
- 9 DirtLifter™ PowerBrush
- 10 Edge Sweep™ Brushes



TIPS

- » Deep cleaning stairs and high-traffic areas on a regular basis helps prolong carpet life.
- » Deep cleaning carpeting regularly can reduce dust and allergens in your home.

Cleaning fluid

Keep plenty of genuine BISSELL 2X formula on hand so you can clean and protect whenever it fits your schedule. Always use genuine BISSELL deep cleaning formulas. Non-BISSELL cleaning solutions may harm the machine and will void the guarantee.

⚠️ WARNING

To reduce the risk of fire and electric shock due to internal component damage, use only BISSELL cleaning fluids intended for use with the deep cleaner.

Assembly

Your deep cleaner comes in five easy to assemble components:

- Handle assembly**
- Upper body assembly**
- Upper hose rack**
- Lower body assembly**
- Lower hose rack**

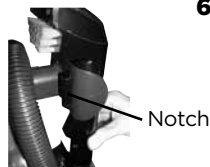
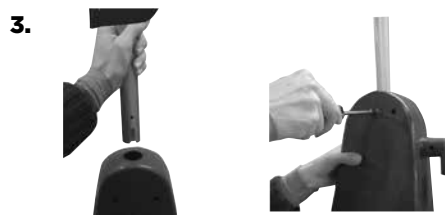
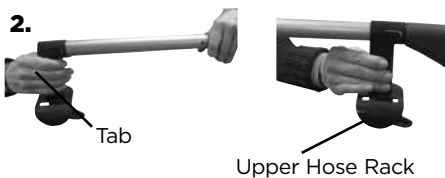
Three Phillips head screws are included and can be found taped to the handle assembly.

The only tool you will need to assemble your cleaner is a Phillips head screwdriver.

- 1.** Slide upper body assembly onto lower body and secure with two screws.
- 2.** With the “tabs” on upper hose rack pointing toward top of handle, attach upper hose rack to handle assembly by sliding it to top of handle until it can go no further. Turn hose rack until it snaps into place.
- 3.** Slide handle assembly down into upper body until it will go no further and secure with screw.
- 4.** Attach lower hose rack to back of upper body by pushing into open slots and sliding down until it snaps into place.
- 5.** Wrap flex hose around hose rack and secure it into notched out holder as shown.
- 6.** Keep flex hose locked in place with hose secure latch.

WARNING

Do not plug in your deep cleaner until you have completely assembled it per the instructions and are familiar with all instructions and operating procedures.



Operations

Special features

Your BISSELL deep cleaner is a home cleaning system that uses a combination of hand hot tap water, BISSELL cleaning formula, brush agitation and suction to safely clean carpets.

DirtLifter™ Powerbrush

The DirtLifter PowerBrush is designed to enhance cleaning performance. The bristle pattern safely lifts out dirt while gently grooming carpet fibers. The floating suspension self-adjusts to all carpet heights. When the power is ON and the machine is in the upright position, your carpet is protected because the brushes are lifted up off the carpet.

ReadyTools™ Dial

The Ready Tools feature allows you to choose between FLOOR CLEANING or cleaning with TOOLS simply by turning the dial. The TOOLS setting allows for above floor cleaning of upholstery, stairs, creases along baseboards, and other hard to reach areas. Simply choose the tool that is appropriate for the job, attach to flex hose and you are ready to go.

Measuring cup

Your deep cleaner is equipped with a measuring cup for adding the proper amount of formula to the 2-in-1 tank. For convenience the measuring cup is built into the lid of the 2-in-1 tank.

2-in-1 water tank

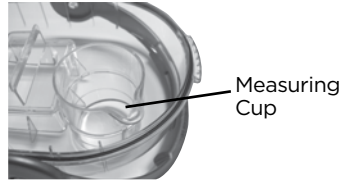
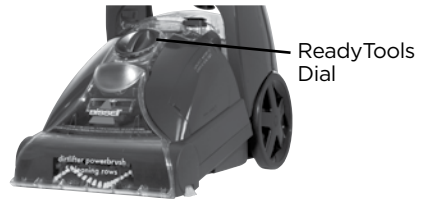
Our 2-in-1 water tank system is designed with a heavy duty bladder inside for clean water and cleaning formula. As you clean, the clean water and cleaning formula in the bladder will empty. Dirty water pulled out of your carpet will collect around the outside of the bladder so clean and dirty water are always kept separate. This allows the user to maximize tank space, yet only carry one tank to and from the sink for emptying and filling.

⚠️ WARNING

To reduce the risk of fire, use only BISSELL deep cleaning formula for full size machines in your deep cleaner. Use of cleaning formulas that contain lemon or pine oil may damage this appliance and void the guarantee. Chemical spot cleaners or solvent-based soil removers should not be used. These products may react with the plastic materials used in your deep cleaner causing cracking or pitting.

ATTENTION

Some Berber carpets have a tendency to fuzz with wear. Repeated strokes in the same area with an ordinary vacuum or deep cleaner may aggravate this condition.



Tip

Remove loose dirt and impediments before cleaning to prevent early clogging of the lint trap.

Operations

Before you clean

1. Plan activities to give your carpet time to dry.
2. Move furniture to another area if cleaning an entire room (optional).
3. Remove loose dirt and impediments before cleaning.
4. Plan your cleaning route to leave an exit path. It is best to begin cleaning in the corner farthest from your exit.

5. Pretreating (optional)

Pretreating is recommended to improve cleaning effectiveness for heavily soiled carpet in high traffic areas such as entry ways and hallways.

To pretreat:

- a. Using the BISSELL Stain Preteat, generously spray evenly over soiled area, do not overwet.
- b. Wait 3-5 minutes before deep cleaning.
- c. Clean as normal using your BISSELL deep cleaner, following the instructions below.

⚠ CAUTION

Take care not to run over loose objects or edges of area rugs. Stalling the brush may result in premature belt failure.



Fill the 2-in-1 water tank

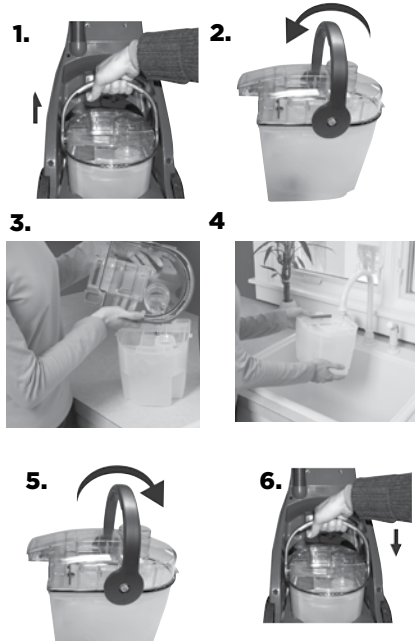
1. Remove the tank from the base of the machine by lifting the tank carry handle.
2. Carry like a bucket to the sink. Rotate the handle forward to unlatch the lid. Remove lid, turn over and locate built in measuring cup.
3. Fill with BISSELL 2X formula to the indicated fill line on the built in measuring cup and pour into mouth of the bladder.
4. Fill the bladder with clean hand hot (60°C/140°F MAX) tap water. ***Do not boil or microwave water as it can destroy the bladder.**
5. Replace the top of the tank by matching the lid and tank edges. Handle must be in the forward position in order to replace lid. Rotate the handle to the carrying position to latch the lid.

NOTE: Remember to secure the lid and test to make sure it is secure before picking up the tank.

6. Place tank into machine base, seating firmly in place. Rotate tank handle back into latched position.

⚠ WARNING

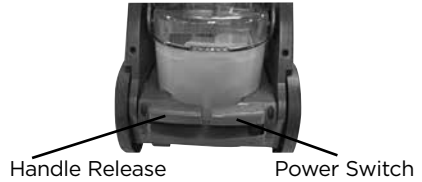
To reduce the risk of electric shock, push power button ⓐ off and disconnect plug from electrical outlet before performing maintenance or troubleshooting checks.



Operations

Carpet cleaning

1. Plug the deep cleaner into a proper outlet. Turn the power ON by pressing the red power switch on the back of the unit with your foot.
2. With your foot, press the gray handle release lever located on the back of unit below water tank.
3. While pressing the spray trigger, make one slow forward wet pass and another back. Let the BISSELL 2X deep cleaning formula and DirtLifter PowerBrush do the work for you.
Caution: Do not overwet.
4. Release the spray trigger and make one slow forward and backward pass over the same area to remove any residual dirty water and aid in drying.
5. Repeat cleaning passes until solution being pulled up appears clean. Continue passes without pressing the spray trigger until you can't see any more water being suctioned up.



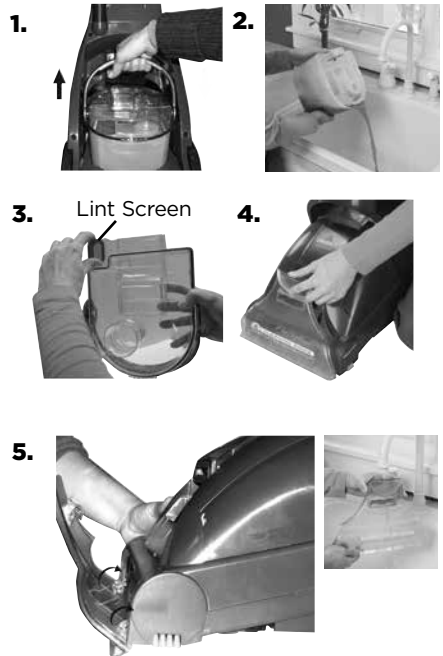
Empty the 2-in-1 water tank/clean removable nozzle

1. Turn power switch OFF. Remove the 2-in-1 water tank from the base using the tank carry handle. Carry the tank like a bucket to a utility sink or outside where you will dispose of the collection water. Remove the top of the tank by rotating the handle forward to unlatch lid and lifting lid off tank.
2. Empty collection water from bottom of tank.
3. After each use, remove and rinse the lint screen located on the tank lid.
4. If nozzle needs to be cleaned, remove by grasping handle at the top and pulling forward. Clean removable nozzle by rinsing under running water.
5. When finished, replace nozzle by slightly raising front of machine to line up slots on the base with the hooks on nozzle. Attach at base first and then click nozzle into place.

NOTE: If nozzle is not attached properly loss of suction will occur.

6. To continue carpet cleaning, refer back to "Fill the 2-in-1 water tank" instructions on page 7 and "Carpet Cleaning" instructions above.

If cleaning is complete, refer to the "Maintenance and care" section on page 10.



Operations

Ready Tools™

Your deep cleaner comes equipped with a hose and at least one attachment for cleaning stairs, upholstery, and more.

Important! If using the machine to clean upholstery, check upholstery tags.

1. Check manufacturer's tag before cleaning. "W" or "WS" means you can use your deep cleaner. If the tag is coded with "X" or "S" (with a diagonal strike through), or says "Dry Clean Only," do not proceed. Do not use on velvet or silk. If manufacturer's tag is missing or not coded, check with your furniture dealer.

2. Check for colourfastness in an inconspicuous place.

3. If possible, check upholstery stuffing. Coloured stuffing may bleed through fabric when wet.

4. Plan activities to give upholstery time to dry.

5. Vacuum thoroughly to pick up loose debris and pet hair. Use a vacuum with a brush attachment and a crevice tool to clean in fabric folds and tufts.

6. To begin cleaning with attachments, follow the instructions on page 7 for filling the 2-in-1 water tank.

7. Set the ReadyTools dial to the TOOLS setting. This will allow spray and suction from the hose.

8. Attach the cleaning tool to the end of the hose.

9. Clean by pressing the spray trigger to spray solution onto the area to be cleaned. Slowly move the tool back and forth over the soiled surface. Release the spray trigger to suction dirty water. Continue to clean in the area, working in small sections, until dirt is removed.

Caution: Do Not Overwet.

10. When finished cleaning, remove and rinse tool(s) in clean, running water.

11. It is recommended that you suction clean water from a bowl to rinse out the hose.

12. Before wrapping hose onto tool rack, lift end of hose and stretch out to ensure all water is cleared from hose.

13. Wrap flex hose around tool rack.

14. Empty 2-in-1 water tank and rinse out, following instructions on page 8.

15. If the ReadyTools dial becomes difficult to turn, the diverter assembly that holds the dial may need to be cleaned. To clean, first remove nozzle and locate screw that holds the diverter assembly in place. With a Phillips screwdriver, remove the screw and set aside.

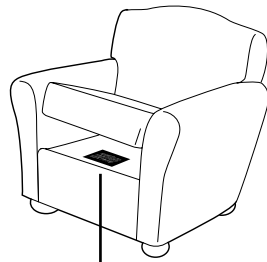
16. Remove diverter assembly; hold under running water making sure water flows through and around the dial. Turn the dial about 10 times clockwise and 10 more times counter clockwise. This should free up any debris.

17. Wipe diverter assembly with a soft cloth and replace back on machine. Replace nozzle.

18. Return ReadyTools dial to FLOOR CLEANING setting.

IMPORTANT

Check for colourfastness in an inconspicuous place. If possible, check upholstery stuffing. Coloured stuffing may bleed through fabric when it becomes wet.



Manufacturer's tag

11.



12.



15.



Screw

Run water through here

16.



Maintenance & Care

Machine care

For best results, a few simple steps can assure your machine is well maintained after your cleaning is complete.

1. Turn power switch OFF. Unplug the machine and wrap the power cord.
2. After emptying the 2-in-1 water tank, rinse it with running hot tap water, taking care to clean underneath and around the heavy duty bladder. Clean out red lint screen. Removable nozzle may be rinsed if necessary. Refer to page 8.
3. Replace the 2-in-1 water tank on the machine.
4. Any loose hair or debris can be pulled from the brush roll and thrown away.
5. To clean attachments, remove from hose and rinse in clean, running water. Dry before storing. Clean the hose by suctioning clean water from a bowl. Before wrapping back on machine, lift end of hose and stretch out to ensure all water is cleared from hose. Refer to page 9, illustrations 11 and 12.
6. Wipe the machine's exterior with a soft cloth.
7. After carpet is dry, vacuum again to remove hair and fuzz.

Machine storage

Put the unit away in a closet or basement for the next use. Store cleaner in a protected, dry area. Since this product uses water, it must not be stored where there is a danger of freezing. Freezing will damage internal components and void the guarantee.

WARNING

To reduce the risk of electric shock, push power button  off and disconnect plug from electrical outlet before performing maintenance or troubleshooting checks.

Troubleshooting

WARNING

To reduce the risk of electric shock, push power button **⓪** off and disconnect plug from electrical outlet before performing maintenance or troubleshooting checks.

Problem	Possible causes	Remedies
Reduced spray OR no spray	Bladder may be empty.	Turn power switch OFF; Refill bladder with clean hot tap water and cleaning formula.
	2-in-1 tank may not be seated properly.	Turn power switch OFF; remove tank and reseal tanks.
	Pump may have lost prime.	Turn power switch OFF; after 1 minute turn ON and depress spray trigger.
	The pump belt may be broken.	Turn power switch OFF and unplug from the outlet. To check if a pump belt has broken, you will need a flat head screwdriver. A. Insert the blade end into the slot of the belt access door to release. Examine the belt for breakage. You should be able to see the pump belt looped around the motor shaft. If it is broken or missing. A replacement belt may be ordered by calling BISSELL Consumer Services. Complete installation instructions will accompany the replacement belt. B. When replacing belt access door be sure to line up slots of belt access door with slots in machine, slide door into place and snap shut.
DirtLifter PowerBrush does not turn	The brush belt or pump belt is off or broken.	Refer to remedy in “The pump belt may be broken” above to check if brush belt or pump belt is broken.
Cleaner not picking up solution	ReadyTools dial may be on the wrong setting.	Set ReadyTools dial to either FLOOR CLEANING or TOOLS for the cleaning job.
	Poor tool position. (Hand held attachments only).	Adjust angle; apply more downward pressure.
	Removable nozzle may not be properly attached.	Make sure nozzle is on correctly by slightly raising front of machine to line up slots on the base of the machine with the hooks on nozzle. Attach at base first and then click nozzle into place.
	2-in-1 tank lid is not properly installed.	Re-install lid.
	2-in-1 tank is not properly seated.	2-in-1 tank must be firmly seated to function; remove and reseal 2-in-1 tank.
	2-in-1 tank has picked up maximum dirty water.	Empty 2-in-1 tank.
	The lint screen may be clogged.	Clean out lint screen.

Consumer Guarantee

This Guarantee only applies outside of the USA and Canada. It is provided by BISSELL International Trading Company BV ("BISSELL").

This Guarantee is provided by BISSELL. It gives you specific rights. It is offered as an additional benefit to your rights under law. You also have other rights under law which may vary from country to country. You can find out about your legal rights and remedies by contacting your local consumer advice service. Nothing in this Guarantee will replace or lessen any of your legal rights or remedies. If you need additional instruction regarding this Guarantee or have questions regarding what it may cover, please contact BISSELL Consumer Care or contact your local distributor.

This Guarantee is given to the original purchaser of the product from new and is not transferable. You must be able to evidence the date of purchase in order to claim under this Guarantee.

Limited 2 Year Guarantee (from the date of purchase by original purchaser)

Subject to the *EXCEPTIONS AND EXCLUSIONS identified below, BISSELL will repair or replace (with new or remanufactured components or products), at BISSELL's option, free of charge, any defective or malfunctioning part or product.

BISSELL recommends that the original packaging and evidence of the date of purchase be kept for the duration of the Guarantee period in case the need arises within the period to claim on the Guarantee. Keeping the original packaging will assist with any necessary re-packaging and transportation but is not a condition of the Guarantee.

If your product is replaced by BISSELL under this Guarantee, the new item will benefit from the remainder of the term of this Guarantee (calculated from the date of the original purchase). The period of this Guarantee shall not be extended whether or not your product is repaired or replaced.

*EXCEPTIONS AND EXCLUSIONS FROM THE TERMS OF THE GUARANTEE

This Guarantee applies to products used for personal domestic use and not commercial or hire purposes. Consumable components such as filters, belts and mop pads, which must be replaced or serviced by the user from time to time, are not covered by this Guarantee.

This Guarantee does not apply to any defect arising from fair wear and tear. Damage or malfunction caused by the user or any third party whether as a result of accident, negligence, abuse, neglect, or any other use not in accordance with the User Guide is not covered by this Guarantee.

An unauthorised repair (or attempted repair) may void this Guarantee whether or not damage has been caused by that repair/attempt.

Removing or tampering with the Product Rating Label on the product or rendering it illegible will void this Guarantee.

SAVE AS SET OUT BELOW BISSELL AND ITS DISTRIBUTORS ARE NOT LIABLE FOR ANY LOSS OR DAMAGE THAT IS NOT FORESEEABLE OR FOR INCIDENTAL OR CONSEQUENTIAL DAMAGES OF ANY NATURE ASSOCIATED WITH THE USE OF THIS PRODUCT INCLUDING WITHOUT LIMITATION LOSS OF PROFIT, LOSS OF BUSINESS, BUSINESS INTERRUPTION, LOSS OF OPPORTUNITY, DISTRESS, INCONVENIENCE OR DISAPPOINTMENT. SAVE AS SET OUT BELOW BISSELL'S LIABILITY WILL NOT EXCEED THE PURCHASE PRICE OF THE PRODUCT.

BISSELL DOES NOT EXCLUDE OR LIMIT IN ANY WAY ITS LIABILITY FOR (A) DEATH OR PERSONAL INJURY CAUSED BY OUR NEGLIGENCE OR THE NEGLIGENCE OF OUR EMPLOYEES, AGENTS OR SUBCONTRACTORS; (B) FRAUD OR FRAUDULENT MISREPRESENTATION; (C) OR FOR ANY OTHER MATTER WHICH CANNOT BE EXCLUDED OR LIMITED UNDER LAW.

Consumer Care

If your BISSELL product should require service or to claim under our limited guarantee, please contact us as follows:

Website:

www.BISSELL.com

Email:

info@bisselldirect.co.uk

Telephone:

0344-888-6644

Write:

BISSELL Homecare (Overseas) Inc.
Ground Floor
226 Berwick Avenue
Slough, Berkshire, SL1 4QT
United Kingdom

Visit the BISSELL website: www.BISSELL.com

When contacting BISSELL, have model number of cleaner available.

Please record your Model Number: _____ Please record your Purchase Date: _____

NOTE: Please keep your original sales receipt. It provides proof of the date of purchase in the event of a Guarantee claim. See Guarantee for details.



©2017 BISSELL Homecare, Inc
Grand Rapids, Michigan
All rights reserved. Printed in China
Part Number 161-2921 07/17 RevA
Visit our website at: www.BISSELL.com