



SELPHY CP1300

COMPACT PHOTO PRINTER

Printer User Guide

ENGLISH

- Make sure you read this guide, including the “Safety Instructions” (📖5) section, before using the printer.
- Reading this guide will help you learn to use the printer properly.
- Store this guide safely so that you can use it in the future.

Click the navigation buttons at the top of the page to access these pages.

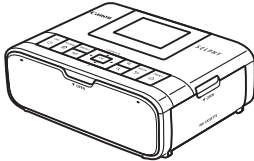
: Table of contents

: Page previously viewed

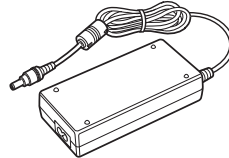


Package Contents

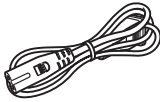
Before use, make sure the following items are included in the package. If anything is missing, contact the retailer where you purchased the printer.



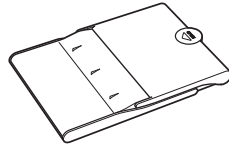
□ SELPHY Printer



□ Compact Power Adapter
CA-CP200 B



□ Power Cord



□ Paper Cassette
PCP-CP400

- Printed matter is also included.
- Purchase a Color Ink / Paper Set separately.



Ink and Paper (Sold Separately)

- For best performance and easier printing, use genuine Canon Color Ink / Paper Sets for SELPHY CP printers.
- This printer cannot use ink, paper, or postcards for the SELPHY ES series.
- Accessory availability varies by region.

Color Ink / Paper Set			Necessary Paper Cassette
Product Name	Paper Size	Number of Possible Prints	
Color Ink / Paper Set KP-36IP (Postcard)	Postcard Size	36	Paper Cassette PCP-CP400 (included with SELPHY)
Color Ink / Paper Set RP-108 (Photo Paper)		108	
Color Ink / Paper Set RP-1080V (Photo Paper)		1080	
Color Ink / Paper Set KP-108IN (Photo Paper)		108	
Color Ink / Paper Set KC-36IP	Card Size	36	Paper Cassette PCC-CP400*
Color Ink / Label Set KC-18IF (Full-Page Label)		18	
Color Ink / Label Set KC-18IL (8 Labels per Page)		18	
Color Ink / Label Set KC-18IS (Square Labels)		18	





* Purchase with the Color Ink / Paper Set.



Before Use

- Images printed with this product are to be used for personal enjoyment. Unauthorized printing of copyrighted material is prohibited.
- For information on printer warranty or Customer Support, please refer to the warranty information provided with your printer User Manual Kit.
- Although the monitor is produced under extremely high-precision manufacturing conditions and more than 99.99% of the pixels meet design specifications, in rare cases some pixels may be defective or may appear as red or black dots. This does not constitute a malfunction or affect printed images.
- The monitor may be covered with a thin plastic film for protection against scratches during shipment. If so, remove the film before use.

Conventions in This Guide

- In this guide, the product is referred to as “SELPHY” or “the printer.”
- Icons are used in this guide to represent buttons on SELPHY. Refer to “Controls” ( 13) for details.
- On-screen text or icons are shown in square brackets, as in [].
- : Important information you should know
- : Notes and tips for expert use
- xx: Pages with related information (In this example, “xx” represents a page number.)
- Instructions in this guide apply to the printer under default settings.
- For convenience, all supported memory cards are simply referred to as “memory card”.
- For convenience in this guide, smartphones, tablets, and other compatible devices are collectively referred to as “smartphones”.



Safety Instructions

- Be sure to read these instructions in order to operate the product safely.
- Follow these instructions to prevent injury or harm to the operator of the product or others.

⚠ WARNING Denotes the risk of serious injury or death.

- **Use only power sources specified in this instruction manual for use with the product.**
- **Do not disassemble or modify the product.**
- **Do not expose the product to strong shocks or vibration.**
- **Do not touch any exposed internal parts.**
- **Stop using the product in any case of unusual circumstances such as the presence of smoke or a strange smell.**
- **Do not use organic solvents such as alcohol, benzene or paint thinner to clean the product.**
- **Do not get the product wet. Do not insert foreign objects or liquids into the product.**
- **Do not use the product where flammable gases may be present.**
This may cause electric shock, explosion or fire.

- **Do not touch the product connected to a power outlet during lightning storms.**
This may cause electric shock.

- **Periodically remove any dust buildup from the power plug and power outlet using a dry cloth.**
- **Do not plug in or unplug the product with wet hands.**
- **Do not use the product if the power plug is not fully inserted into the power outlet.**
- **Do not expose the power plug and terminals to dirt or let them come into contact with metallic pins or other metal objects.**
- **Do not touch the battery charger or AC adapter connected to a power outlet during lightning storms.**
- **Do not place heavy objects on the power cord. Do not damage, break or modify the power cord.**
- **Do not wrap the product in cloth or other materials when in use or shortly after use when the product is still warm in temperature.**
- **Do not leave the product connected to a power source for long periods of time.**



- **Do not charge batteries/battery packs at temperatures outside the range of 5 – 40 °C (41 – 104 °F).**

This may cause electric shock, explosion or fire.

- **Follow any indications to turn off the product in places where its use is forbidden.**

Not doing so may cause other equipment to malfunction due to the effect of electromagnetic waves and even result in accidents.

⚠ CAUTION Denotes the risk of injury.

- **Do not touch any parts inside the product.**

This may cause injury.

- **Avoid using, placing, or storing the product in the following places:**

- Places subject to direct sunlight
- Places subject to temperatures above 40 °C (104 °F)
- Humid or dusty places
- Places subject to strong vibration

This may cause overheating of or damage to the printer or adapter, which may result in electric shock, burns or other injury, or fire.

High temperature may deform the product or adapters.

CAUTION Denotes the possibility of property damage.

- **Unplug the product from the power outlet when you are not using it.**
- **Do not place anything, such as cloth, on top of the product while in use.**

Leaving the product plugged in for a long period of time may cause it to overheat and distort, resulting in fire.

- **Never reuse paper for printing, even if most of the paper is blank.**

Reusing paper may damage the printer if paper jams or the ink sheet adheres to the paper.

- **Do not unplug the printer while it is printing.**

If you accidentally turn the printer off while printing, restart it and wait until the paper is ejected. If paper jams and cannot be removed, contact your retailer or a Customer Support Help Desk. Do not attempt to remove jammed paper by force, which may damage the printer.



- **Do not use the printer near motors or other devices that generate strong magnetic fields, near TVs or radios, or in dusty environments.**

This may damage the printer or cause malfunction.

- **Do not raise the monitor excessively.**

The screen can be raised to about 45°. Attempting to raise it further may damage it.



Fun and Useful SELPHY Features



Available when printing from memory cards or USB flash drives



Available when printing from smartphones



Available when printing from cameras

Printing in mixed layouts on one sheet



Shuffle (📖33)



2-up fixed size print (📖29)



Index (📖30)



2x6 inch print (📖27)



1, 2, 4, 8-up (📖41)

Making ID photos (📖37)



Adding the date (📖43, 📖45)



Adding the image file number (📖43)



Adjusting image appearance (📖41)



*



Adding a border (📖40)



* May not be possible with some images or from some apps

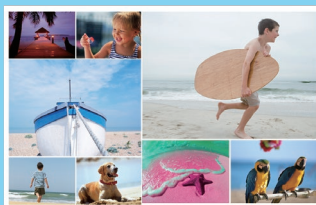
Printing specific parts of images (📖26)



Printing from a smartphone (📖46)



Printing images on multiple smartphones together (📖35)



Printing from a computer



Wi-Fi connection (📖55)



USB connection (📖64)

Printing from a camera



Wi-Fi connection (📖46)



USB connection (📖67)

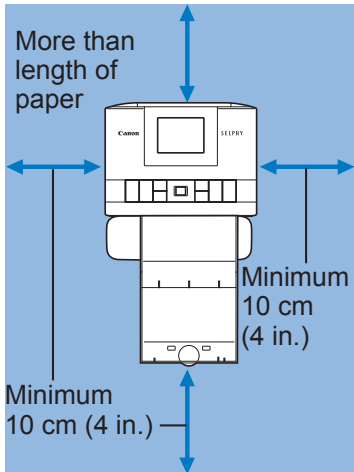


Table of Contents

Package Contents	2	Features of [Setup].....	39
Ink and Paper (Sold Separately)..	3	Print Settings	39
Before Use.....	4	Printer Setup	44
Conventions in This Guide	4	Printing Wirelessly from	
Safety Instructions	5	Smartphones or Cameras	46
Fun and Useful SELPHY		Setting up Wi-Fi on SELPHY	46
Features	8	Printing from a Smartphone	48
Table of Contents	10	Printing from a Camera	51
Choosing Where to Place		Subsequent Printing	52
SELPHY	11	Other Wi-Fi Features.....	53
Part Names	12	Printing via Wi-Fi from	
Controls	13	a Computer	55
Home Screen Menus.....	14	Connecting the Printer to the	
Image Selection Screen	15	Access Point.....	55
Initial Preparations	16	Printing Images (Windows)	60
Loading the Ink Cassette.....	16	Printing Images (Mac OS).....	62
Loading the Paper Cassette	17	Printing via USB from	
Turning the Printer On	20	a Computer	64
Display Language	21	Printing Images (Windows)	64
Supported Memory Cards	22	Printing Images (Mac OS).....	66
USB Flash Drives	22	Printing via USB from	
Images You Can Print.....	22	a Camera	67
Selecting and Printing Images		Troubleshooting	68
(Basic Printing)	23	Power	68
Options	25	Screen	68
Features of		Printing	68
[More Print Options]	27	Paper	70
2x6 Inch Print	27	Wi-Fi	71
2-Up Fixed Size Print	29	Error Messages	73
Index Print	30	Appendix	74
DPOF Print	31	Printing without a Power Outlet	74
Reprint.....	32	Storing Prints.....	76
Features of [Shuffle Print]	33	After Printing.....	76
Printing Images on Memory Cards...	33	Specifications	77
Printing Images on Smartphones	35	Handling and Maintenance.....	80
Features of [ID Photo]	37	Wi-Fi (Wireless LAN) Precautions	82



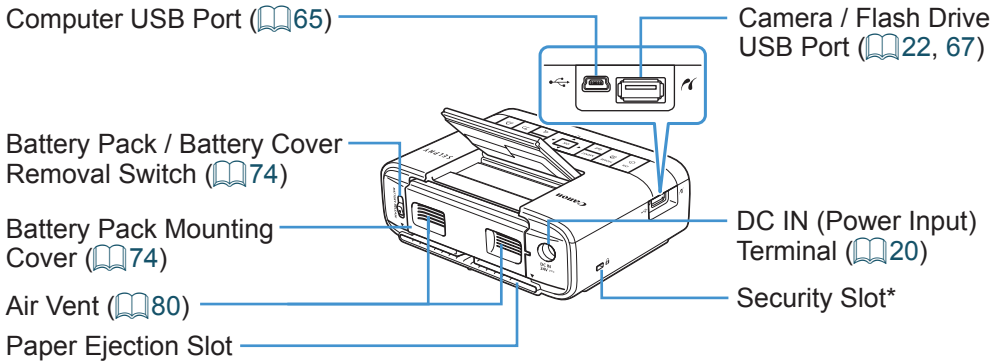
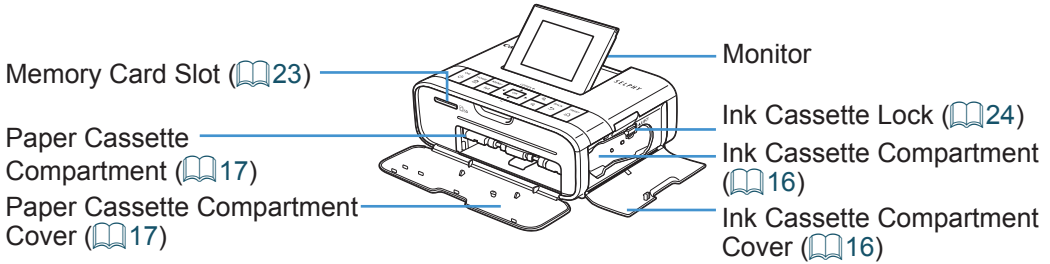
Choosing Where to Place SELPHY



- Place the printer on a table or other flat, stable surface. Never place the printer on an unstable or tilted surface.
- Leave some space open behind SELPHY for paper to emerge temporarily during printing.



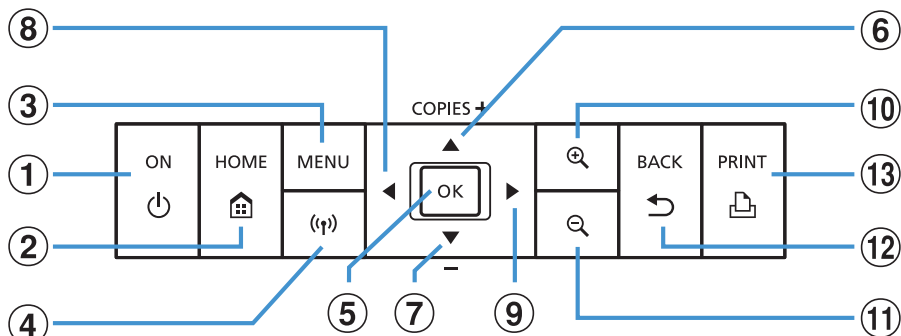
Part Names



* Security cables, such as a Kensington lock, can be attached to this slot.



Controls

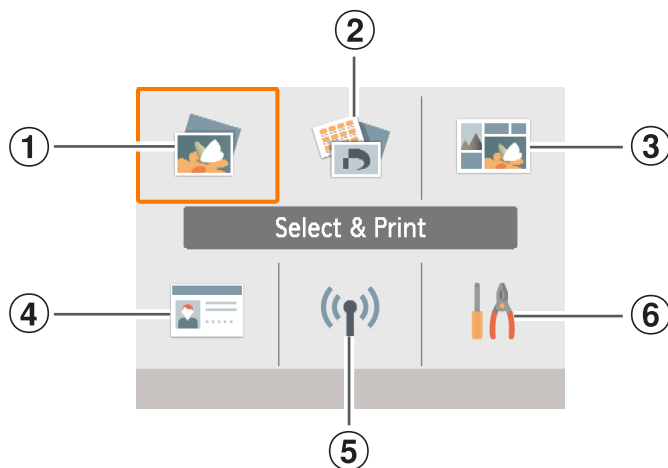


Icons in This Guide	Name	Function
–	Monitor	Displays images, setting screens, or error messages (📖73) Can be raised about 45°
① <🔌>	ON button	Turns SELPHY on or off (📖20)
② <🏠>	HOME button	Displays the Home screen (📖14)
③ <MENU>	MENU button	Displays the Options screen and rotates the crop frame
④ <📶>	Wi-Fi button	Activates/deactivates Wi-Fi and shows devices to connect to (📖52)
⑤ <OK>	OK button	Confirms the selected item
⑥ <▲>	Up/+ button	Specifies the number of prints or selects setting items
⑦ <▼>	Down/- button	Hold down to increase or decrease by 5
⑧ <◀>	Left button	Switches images, changes setting values
⑨ <▶>	Right button	Hold down to jump forward or back by 5 images, if there are more than 5 images
⑩ <🔍+>	Enlarge button	Zooms in, switches display modes, or enlarges the crop frame
⑪ <🔍->	Reduce button	Switches display modes, reduces the crop frame
⑫ <↶>	BACK button	Restores the previous screen, cancels printing (📖24)
⑬ <🖨️>	PRINT button	Starts printing (📖23)



Home Screen Menus

Press the <🏠> button to display the Home screen.



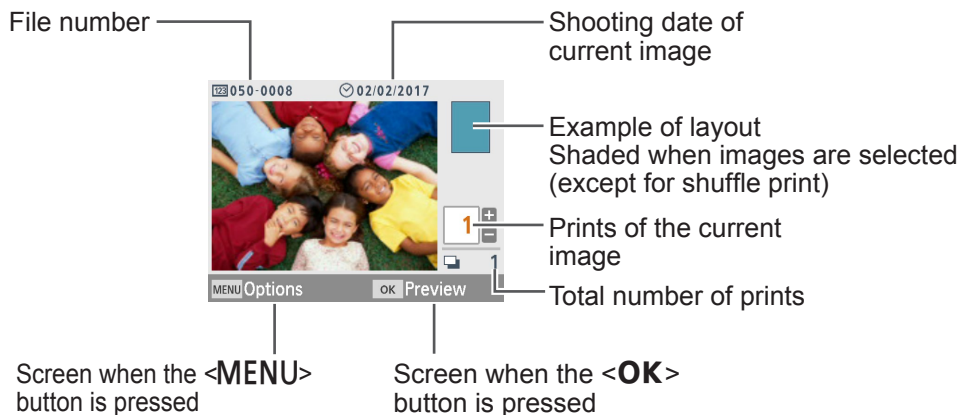
①	Select & Print	Select images, specify the number of prints, and print.
②	More print options	Print in a variety of ways, such as printing an index or reprinting previously printed images.
③	Shuffle print	Print images from a memory card or smartphone together at automatically selected sizes.
④	ID Photo	Print ID photos for passports or other documents.
⑤	Wi-Fi settings	Set up a Wi-Fi connection.
⑥	Setup	Set up printing or other printer operation.

Press the <▲><▼><◀><▶> buttons to select a menu, and then press the <OK> button.



Image Selection Screen

This is the [Select & Print] image selection screen on the Home screen. Image selection screens for other menus differ slightly.



Switching Display Modes

To zoom in, press the <⊕> button. The print area is outlined. Press the <⊖> button to view nine images at once.

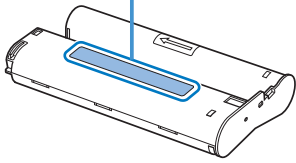


Initial Preparations

Prepare ink and paper cassettes for how you will print (📖3).

Loading the Ink Cassette

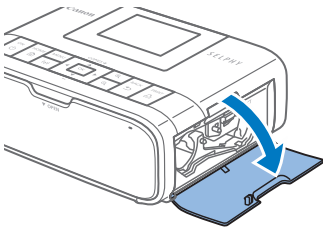
Size label



1 Check the ink cassette size.

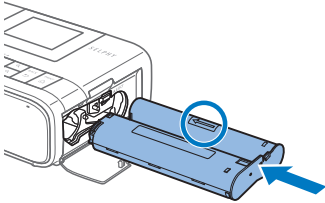
- Make sure the size of the ink cassette matches the size of paper you will use.

2 Open the ink cassette compartment cover.

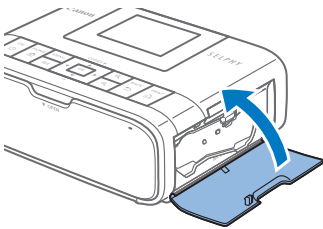


3 Load the ink cassette.

- Insert the ink cassette into the printer in the direction of the arrow on the cassette until it clicks into place.



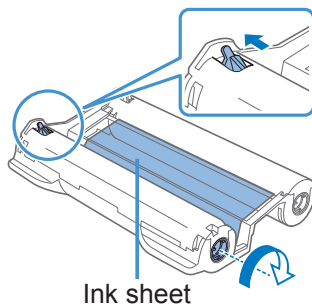
- Close the ink cassette compartment cover.



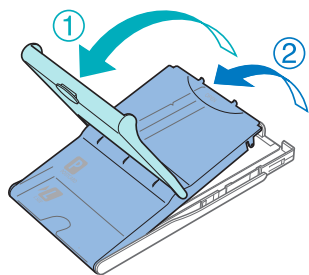
- Do not touch the ink sheet.
- Avoid getting dust on the ink sheet.
- Do not reuse ink cassettes.



- If the ink sheet is loose, turn the sprocket gently to tighten it.
- For an ink cassette that has a lock on the bottom, press the lock (as shown) to release it as you turn the sprocket to make the sheet taut.

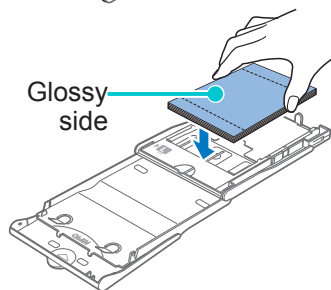


Loading the Paper Cassette



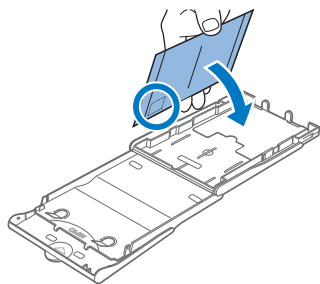
1 Open the covers.

- There are two layers of covers. First open the outer cover (①), and then the inner cover (②).

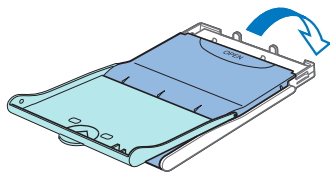


2 Load the paper.

- Remove the paper cassette paper from the bag, remove any protective sheets from the paper, and load all paper (18 sheets) in the paper cassette.
- Loading 19 or more sheets may damage the printer or cause malfunction.
- Holding the paper as shown, load it with the glossy side up.

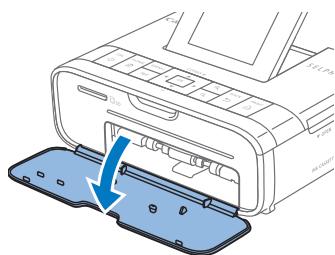


- When making postcard prints with space for a stamp, load the paper with the stamp area facing as shown.

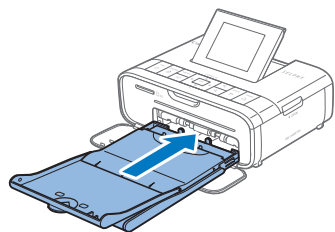


3 Close the inner cover.

- Close the inner cover firmly until it clicks into place.
- Leave the outer cover open when printing.



4 Open the paper cassette compartment cover.

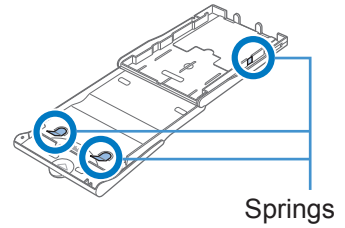


5 Load the paper cassette.

- Making sure the outer cover is open (17), insert the paper cassette all the way into the compartment. (It slides about 2 cm (0.8 in.) into the compartment.)

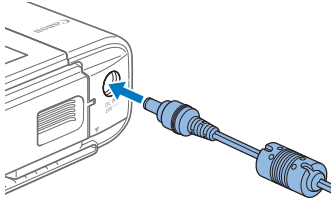


- Never do the following, which may damage the printer or cause malfunction.
 - Loading paper upside-down, with the glossy and back sides reversed
 - Bending or separating paper at the perforations before printing
 - Using label paper whose upper label surface is peeling off or has been partially pulled up
 - Writing on paper before printing
 - Reusing paper, such as printing on blank areas (📖6)
- Do not touch the springs on the paper cassette. Accidentally bending the springs may prevent efficient paper feeding.
- Note that one spring is attached in the center on the top of card-size paper cassettes.
- Avoid touching or rubbing the glossy, printing side of the paper. Do not handle paper with wet hands, and keep paper free of dust. Dirt or moisture may cause banding or affect print quality, or damage the printer (📖6).

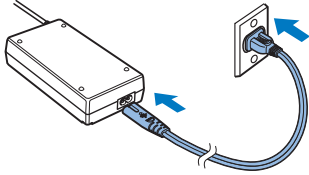




Turning the Printer On



- 1 Plug the adapter cord into SELPHY.



- 2 Connect the power cord.



- 3 Turn on SELPHY.

- Hold down the <power> button until “Canon” is displayed, and then release the <power> button.
- The Home screen is displayed (📖 14).



- To turn off SELPHY, hold the <power> button again until the screen changes.

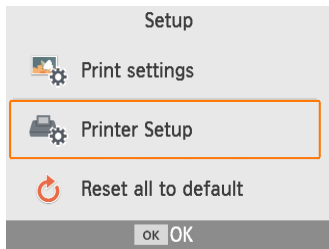


Display Language

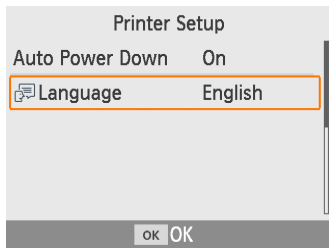
Change the language of menus and messages.



- 1 Choose [Setup], and then press the <OK> button.**
 - On the Home screen, press the <▲><▼><◀><▶> buttons to select [Setup], and then press the <OK> button.



- 2 Choose [Printer Setup], and then press the <OK> button.**




- 3 Choose [Language], and then press the <OK> button.**

- 4 Choose a language.**
 - Choose a language, and then press the <OK> button.
 - Press the <⌂> button to return to the Home screen.




Supported Memory Cards

No Adapter Required

- SD Memory Card
- SDHC Memory Card
- SDXC Memory Card 

Adapter Required (Sold Separately)

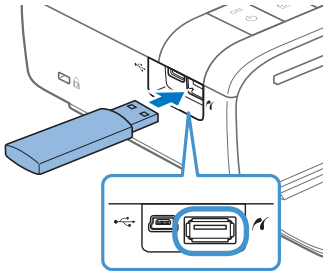
- miniSD Memory Card
- miniSDHC Memory Card 
- microSD Memory Card
- microSDHC Memory Card
- microSDXC Memory Card



- For memory cards that require an adapter, always insert the card into the adapter before inserting the adapter into the card slot. If you mistakenly insert the memory card into the card slot without an adapter, you may not be able to remove the card from the printer.
- Use a memory card formatted with the device you shot the photos with. Images on cards formatted with a computer may not be recognized.

USB Flash Drives

Images on USB flash drives (sold separately) can be printed the same way as images on memory cards.



- Remove any inserted memory cards.
- Insert a USB flash drive as shown.

Images You Can Print

JPEG images conforming to the Exif standard can be printed with SELPHY.

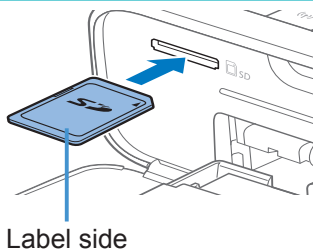


- Images may not be displayed or printed correctly if they have been edited on a computer, or if the long side exceeds 9600 pixels.



Selecting and Printing Images (Basic Printing)

Select images on a memory card and print them as follows.



Label side

1 Insert the memory card into the slot.

- Insert the memory card facing as shown until it clicks into place.
- To remove the card, push it in until it clicks, and then slowly release it.
- The [Select & Print] image selection screen is displayed.

2 Choose an image.

- Press the <◀><▶> buttons to select an image to print.

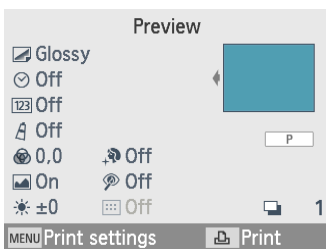
3 Choose the number of prints.

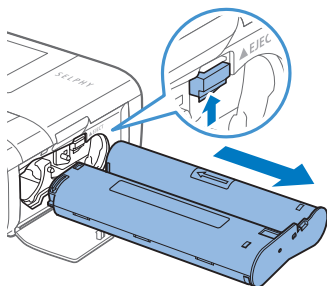
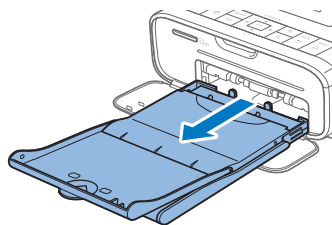
- Press the <▲><▼> buttons to specify the number of prints.
- To print other images at the same time, repeat steps 2 – 3.

- Press the <OK> button. The [Preview] screen is displayed. To adjust the settings displayed, press the <MENU> button and change the settings on the [Print settings] screen (📖39).

4 Print.

- Press the <🖨️> button to start printing.
- While printing, paper passes in and out of the back of SELPHY several times. Do not touch the paper until printing is finished and the print is ejected onto the paper cassette.
- Do not allow 19 or more prints to collect in the ejection area on the paper cassette.





5 Add more paper as needed.

- If a message indicates that the paper has run out, remove the paper cassette without turning off the power.
- Add more paper to the cassette and reinsert the cassette in SELPHY (📖 17).

6 Change the ink cassette as needed.

- If a message indicates that the ink has run out, open the ink cassette compartment cover without turning off the power.
- To remove the ink cassette, move the lock in the direction shown. Insert a new ink cassette (📖 16).

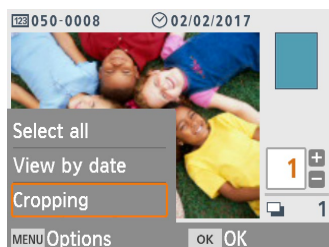


- Never pull out the paper cassette, open the ink cassette compartment cover, or remove a memory card while printing or when you hear printer operation sounds immediately after it has been turned on. This may damage the printer.
- To cancel printing in progress, always press the <⏪> button. Printing cannot be canceled by pressing the <⏻> button, and unplugging the printer may damage it.



Options

On the image selection screen, you can view images by date and crop the selected image.



- Press the **<MENU>** button on the image selection screen in step 2.
- Choose an item, and then press the **<OK>** button.
- All Options menu settings are reset when you turn off SELPHY or remove the memory card.

Select all

Selects all images on a memory card or USB flash drive at once (up to 5,000 images). Increases the number of prints of each image by one (for a total of up to 99 prints).

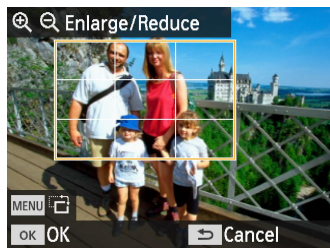
View by date

To view photos taken on a certain date, choose the date on the screen for viewing by date. If you have many images, this can help you find ones you want to print.



Cropping

Displays a crop frame on the image selection screen. Only the area inside the crop frame is printed.



1 Adjust the image area to crop.

- To switch the crop frame between portrait and landscape orientation, press the **<MENU>** button.
- To move the crop frame, press the **<▲><▼><◀><▶>** buttons.
- To enlarge the crop frame, press the **<⊕>** button, and to reduce it, press the **<⊖>** button.

2 Confirm the setting.

- To confirm the cropping area and return to the image display screen, press the **<OK>** button.

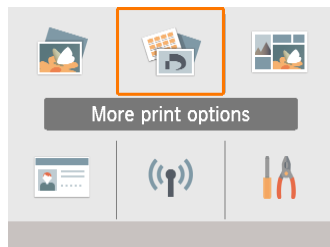


- [Adjust Cropping] in the Options menu enables you to adjust the cropping area, and [Reset Cropping] resets the cropping setting.



Features of [More Print Options]

From [More print options] on the Home screen, index printing, reprinting, and other features are available for images on memory cards or USB flash drives.

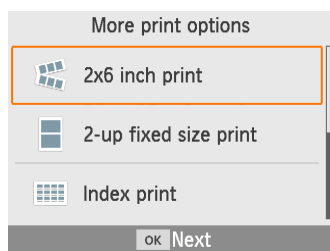


- Insert a loaded paper cassette and an ink cassette in SELPHY (16).
- Choose [More print options], and then press the <OK> button.

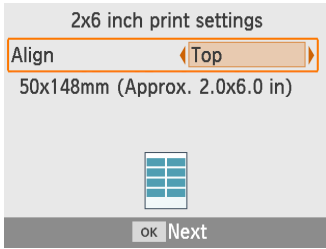
2x6 Inch Print



Print two sets of up to four images in a 2x6 in. area on postcard-size paper.



- 1 Choose [2x6 inch print], and then press the <OK> button.

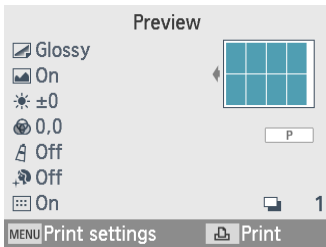


2 Adjust the settings as needed, and then press the <OK> button.



3 Choose images.

- Choose up to four images, each with a quantity of “1.”



- Press the <OK> button. The [Preview] screen is displayed.

4 Print.

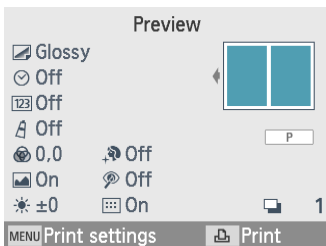
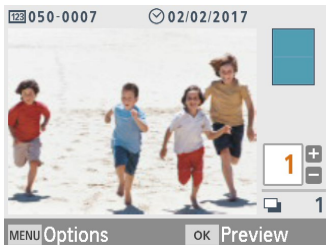
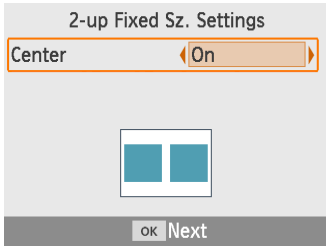
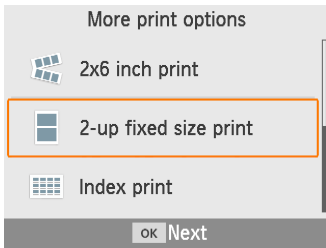
- Press the <🖨️> button to start printing.



2-Up Fixed Size Print



Two card-size images can be printed together on one postcard-size sheet (3).
Cut along the cut marks in the corners to trim to card size.



1 Choose [2-up fixed size print], and then press the **<OK>** button.

2 Adjust the settings as needed, and then press the **<OK>** button.

3 Choose images.

- Choose two images, each with a quantity of “1.”

- Press the **<OK>** button. The [Preview] screen is displayed.

4 Print.

- Press the **<Print>** button to start printing.



Index Print



Index prints include all selected images on one sheet. The numbers of images per sheet varies depending on the paper size.

1 Choose [Index print], and then press the <OK> button.

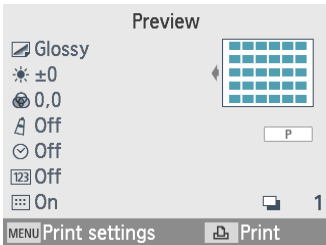
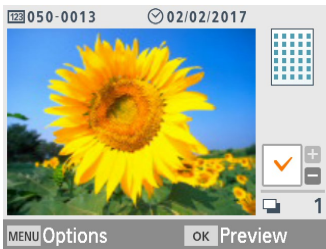
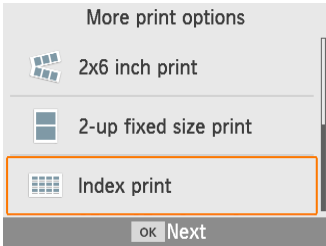
2 Choose images.

- Pressing the <▲> button places a check mark in the quantity field.

- Press the <OK> button. The [Preview] screen is displayed.

3 Print.

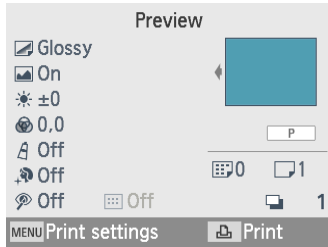
- Press the <🖨️> button to start printing.





DPOF Print

Inserting a memory card with printing information set on a camera will display [DPOF images remain / Print images?]. To review the printing information set on the camera, press the **<OK>** button.



Print.

- To adjust the settings displayed, press the **<MENU>** button and change the settings on the [Print settings] screen (📖39).
- Press the **<Print>** button to print all designated images at once.

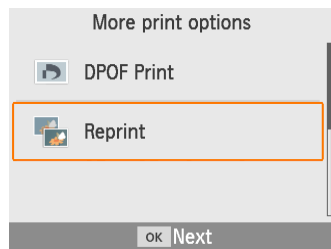


- As long as a memory card with printing information set on the camera is inserted, you can also display this screen by choosing [DPOF Print] and pressing the **<OK>** button.

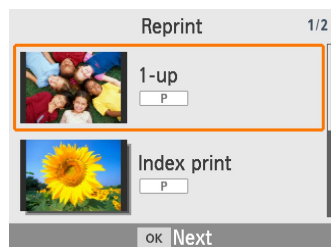


Reprint

The printer keeps a record of images printed from [Select & Print] and [ID Photo], as well as [2x6 inch print], [2-up fixed size print], and [Index print] in [More print options]. Images can be printed again by selecting them from these records.

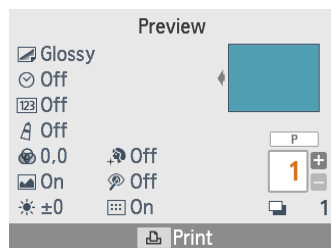


1 Choose [Reprint], and then press the <OK> button.



2 Choose an image that was printed.

- Choose an image that was already printed to print it again.



- Press the <OK> button. The [Preview] screen is displayed. Specify the number of prints, as needed.

3 Print.

- Press the <Print> button to start printing.



- The print history is erased when you turn off the printer or remove memory cards or USB flash drives.
- SELPHY stores up to 10 items in the print history.
- A record is created for the data of each sheet printed.



Features of [Shuffle Print]

Use [Shuffle print] on the Home screen to arrange images in a variety of sizes on one sheet automatically.



- Load an ink cassette and paper cassette (with any paper except card size) in SELPHY (📖 16).



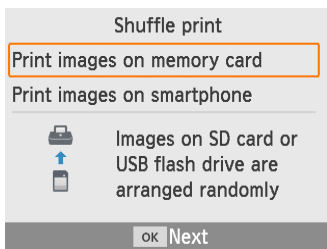
- Shuffle printing is not available for images with an aspect ratio narrower than 3:1.

Printing Images on Memory Cards

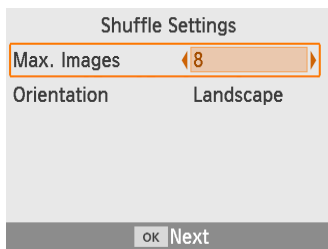
Use shuffle print for images on memory cards or USB flash drives as follows.



- 1 Choose [Shuffle print], and then press the <OK> button.



- 2 Choose [Print images on memory card], and then press the <OK> button.

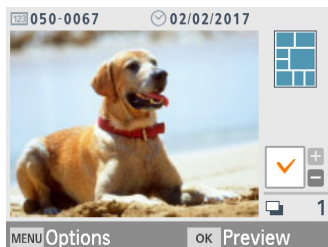


3 Adjust the settings as needed, and then press the <OK> button.

- To use shuffle print for up to 8 images, set [Max. Images] to [8], and for 9 – 20 images, set it to [20].

4 Choose images.

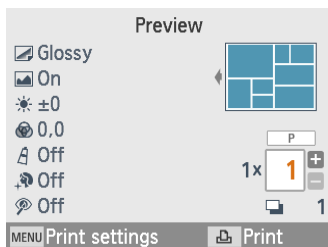
- Pressing the <▲> button places a check mark in the quantity field.



- Press the <OK> button. The [Preview] screen is displayed.
- Press <▲>, and you can specify the number of prints.

5 Print.

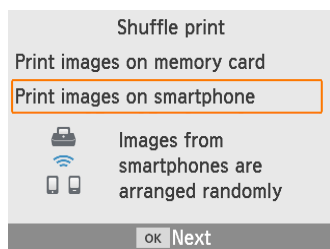
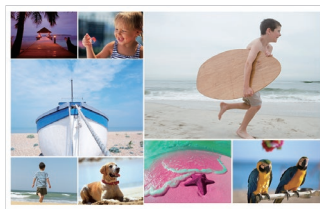
- Press the <🖨> button to start printing.
- Printing is possible even with fewer images than the maximum set in [Max. Images] (8 or 20), and if you choose more images than this, a second sheet is used for shuffle printing. In shuffle printing on two sheets, half of the selected images are printed on each sheet.





Printing Images on Smartphones

Use shuffle print to print images via Wi-Fi from smartphones as follows. Up to 8 images from multiple smartphones can be printed together on a sheet.

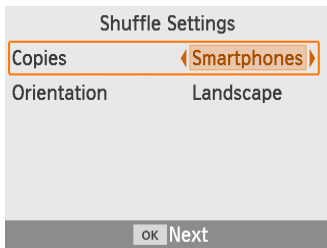


1 Set up a Wi-Fi connection.

- Set up a Wi-Fi connection as described in “Setting up Wi-Fi on SELPHY” (📖 46).

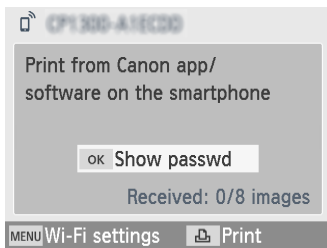
2 Choose [Shuffle print] on the Home screen, and then press the <OK> button.

3 Choose [Print images on smartphone], and then press the <OK> button.



4 Adjust the settings as needed, and then press the <OK> button.

- To make one print for each contributing smartphone, set [Copies] to [Smartphones].



5 Send images from the smartphones (48).

- To connect to SELPHY, on the smartphone, select the SSID (network name) shown at the top of the screen on SELPHY. Press the <OK> button to display the password.
- Start Canon PRINT Inkjet/SELPHY, choose images, and print. SELPHY now receives the images for shuffle printing.

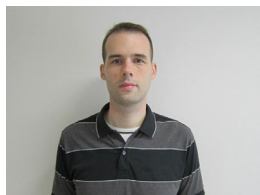
6 Print.

- Once 8 images are received, printing starts automatically.
- You can also start printing before 8 images are received, by pressing the <Print> button.



Features of [ID Photo]

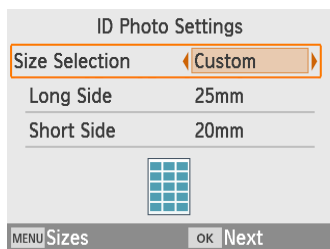
Images on memory cards or USB flash drives can be printed for use in photo identification using [ID Photo] on the Home screen.



- Load an ink cassette and paper cassette (with any paper except card size) in SELPHY (📖 16).



1 Choose [ID Photo], and then press the <OK> button.

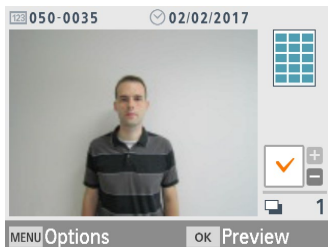


2 Choose a size.

- Choose from these three sizes.

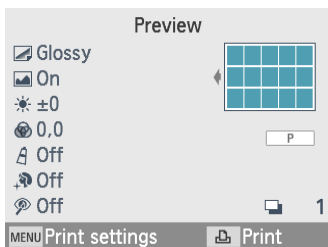
[Custom]	Specify the length of the long and short sides before printing.
[Standard]	Print a photo that complies with the international ICAO standard.
[Dual]	Print two sizes: 50x50 mm (approx. 2.0x2.0 in.) and 45x35 mm (approx. 1.8x1.4 in.).

- [Custom]: Select the long side length in [Long Side], and then select the [Short Side] length. [Short Side] options are automatically updated based on [Long Side] length.
- On the [Sizes] screen, you can limit the sizes listed for [Custom] so that only the sizes used most often are shown.



3 Choose an image.

- Pressing the <▲> button places a check mark in the quantity field.
- With [Custom] and [Standard], two different images can be printed.



- Press the <OK> button. The [Preview] screen is displayed.

4 Print.

- Press the <🖨️> button to start printing.



Features of [Setup]

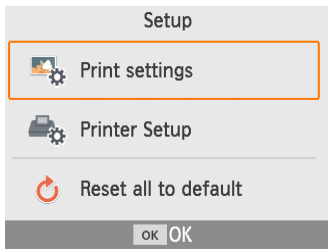
From [Setup] on the Home screen, you can change which print settings are shown on the [Preview] screen, adjust other SELPHY settings, and restore default settings.



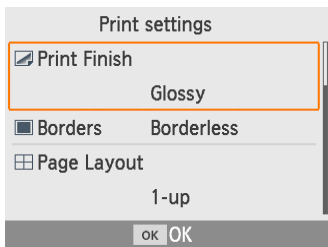
- Choose [Setup], and then press the <OK> button.

Print Settings

Several print settings can be changed. Settings apply to all relevant printing, so there is no need to complete the settings for each image. Note that except for [Print dots to prevent re-use], default settings are restored after you turn off the printer.



- 1 Choose [Print settings], and then press the <OK> button.



- The screen on the left is displayed.
 - These print settings can also be shown on the [Preview] screen. (Settings unavailable for the current printing feature are grayed-out and cannot be adjusted.)
- 2 Select an item to change and press the <OK> button.



Print Finish



Example of finish



[Glossy]



[Pattern 1]



[Pattern 2]



[Pattern 3]

- By adding a subtle texture to the surface of prints, you can create a less glossy finish.

Glossy (default)	Prints with a glossy surface finish.
Pattern 1	Applies a slightly rough surface pattern, for a less glossy finish.
Pattern 2	Applies a fine surface pattern, for a less glossy finish.
Pattern 3	Applies a fine grid-like surface pattern, for a less glossy finish.

Borders



- Print images with or without a border.
- Choosing [Bordered] enables you to print the entire image.
- Borderless (default) / Bordered



Page Layout



- Choose the number of images per sheet.
- With Color Ink / Label Set KC-18IL (8 Labels per Page, 3), specify [8-up].

1-up (default)	One image per sheet	4-up	Four images per sheet
2-up	Two images per sheet	8-up	Eight images per sheet

Background

- Specify the color around images.
- The effect of this setting is shown on the [Preview] screen, in the layout illustration in the upper right.
- White (default) / Black

Image Optimize



- Automatically corrects brightness and contrast to suit each image.
- On (default) / Off

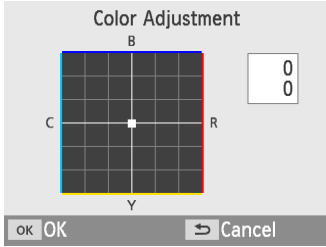
Brightness



- Adjust image brightness in a range of -3 to $+3$.
- Choose larger positive values to make images brighter, or larger negative values to make them darker.



Color Adjustment



- Adjust the level of red, blue, cyan, and yellow (R/B/C/Y) in a range of 0 – 3. Increasing the level of R, for example, decreases the level of C (the complementary color).
- Press the <▲><▼><◀><▶> buttons to select a value, and then press the <OK> button to confirm your choice.

My Colors

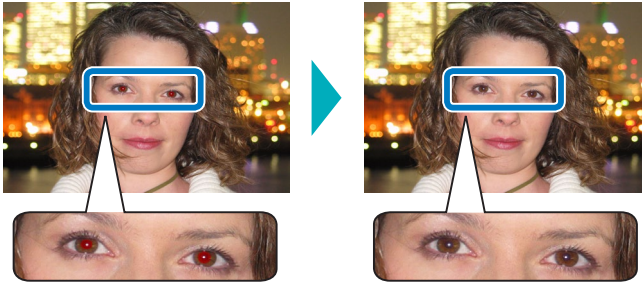
- Choose special color tones to make prints look distinctive, or choose sepia or black-and-white prints.

Off (default)	–	PositiveFilm	Saturated, natural colors, as produced with positive film
Vivid	Vivid prints with greater contrast and color saturation	Sepia	Sepia-tone
Neutral	Subdued prints with less contrast and color saturation	B/W	Black and white

Smooth Skin

- Make skin appear smooth and beautiful.
- Off (default) / On

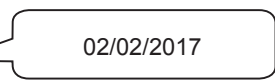
Correct Red-Eye



- Correct images affected by red-eye.
- Off (default) / On



Date



- Add camera shooting dates when you print.
- [Subtle] makes the lettering imperceptible when viewed directly but visible at an angle.
- Off (default) / Prominent / Subtle



- To prevent two instances of the date on images already labeled by the camera, select [Off].

File No.

- Images can be printed with their file number.
- [Subtle] makes the lettering imperceptible when viewed directly but visible at an angle.
- Off (default) / Prominent / Subtle

Print dots to prevent re-use

- Prints dots in the margin to prevent accidental reuse of paper.
- On (default) / Off

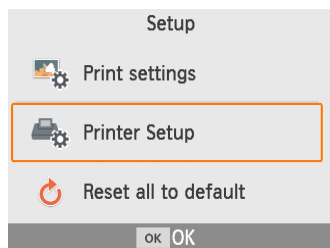


- Never reuse paper for printing, even if most of the sheet is blank. This may damage the printer or cause malfunction.



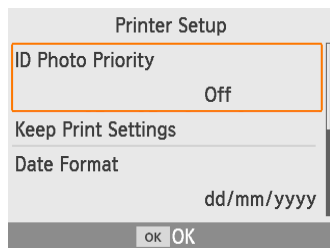
Printer Setup

Several settings that control SELPHY operation can also be changed. The setting is retained even when SELPHY is turned off or memory cards are removed.



- 1 Choose [Printer Setup], and then press the <OK> button.

- The screen on the left is displayed.



- 2 Select an item to change and press the <OK> button.

ID Photo Priority

- Displays the ID Photo Settings screen (📖37) automatically after SELPHY is turned on, when a memory card is inserted, and after printing.
- When this setting is set to [Off], the [Select & Print] screen (📖23) is displayed instead.
- Off (default) / On

Keep Print Settings

- Retain Borders (📖40) and Page Layout (📖41) settings even after the printer is turned off.
- Can be set separately for Borders and Page Layout.
- Off (default) / On



Date Format



02/02/2017



2017/02/02

- When adding the date (📖43), adjust the date format as needed.
- yyyy/mm/dd, mm/dd/yyyy, or dd/mm/yyyy (default)

Auto Power Down

- SELPHY turns off automatically if left idle for about five minutes.
- On (default) / Off



- SELPHY does not turn off automatically in these cases.
 - When a different device is connected
 - When Wi-Fi is enabled
 - When an error message is displayed

Language

Change the language of menus and messages (📖21).



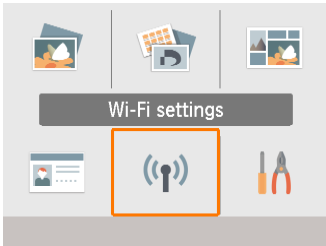
Printing Wirelessly from Smartphones or Cameras

You can print by sending images from a smartphone or camera via Wi-Fi. In places without an access point, [Direct Connection] makes SELPHY operate as a simplified access point for connecting wirelessly and printing from a smartphone or camera.

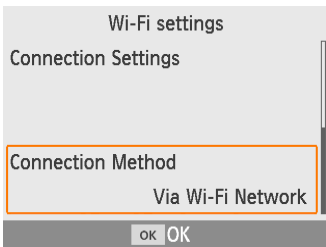
- Remove any inserted memory cards or USB flash drives.
- Insert a loaded paper cassette and an ink cassette in SELPHY (📖16).

Setting up Wi-Fi on SELPHY

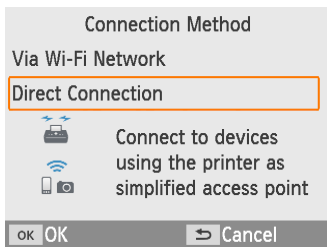
To print via Wi-Fi from smartphones or cameras, set up Wi-Fi on SELPHY.



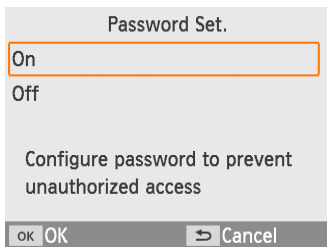
- 1** Choose [Wi-Fi settings], and then press the <OK> button.



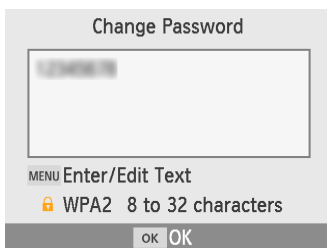
- 2** Choose [Connection Method], and then press the <OK> button.



3 Choose [Direct Connection], and then press the <OK> button.

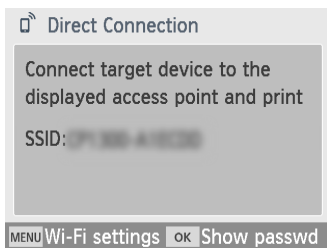


4 Choose [On], and then press the <OK> button.



5 Change the password.

- The current password is displayed. Change the password as needed, and then press the <OK> button.
- Press the <MENU> button to access the input screen.
- The screen on the left is displayed.
- Once you complete the Direct Connection settings, they can be used for subsequent connections.



- You can also connect SELPHY to a smartphone or camera via an access point (📖55).



Printing from a Smartphone



You can print from a smartphone by using a dedicated app. Printing is also possible via AirPrint or Mopria.

Printing from the Dedicated App



1 Download and install Canon PRINT Inkjet/SELPHY.

- For an iPhone or iPad, download the app from the App Store, and for Android smartphones, download it from Google Play.



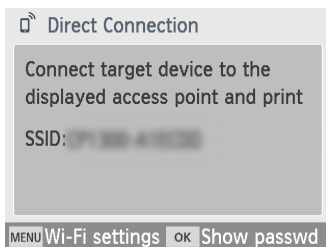
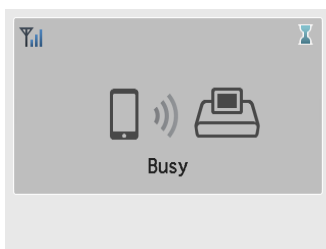
2 Connect to SELPHY from the smartphone.

- In the smartphone's Wi-Fi settings, select the SSID (network name) shown on SELPHY and enter the password.



3 Print.

- Start Canon PRINT Inkjet/SELPHY, choose images, and print.
- Once printing begins, [Busy] is displayed.
- Do not disconnect the devices or close the app while this screen is displayed. Images may not be printed correctly or completely.
- The Home screen or the screen on the left is displayed when printing is finished.





Printing via AirPrint (iOS)

You can also print from an iPhone or iPad using AirPrint. Make sure your version of iOS is up to date.



1 Choose [Print].

- Choose an image to print in an app on your iPhone or iPad (such as a photo-viewing app), tap [↗], and in the menu options displayed, tap [Print].



2 Configure printer options.

- In [Printer], choose [Canon SELPHY CP1300].
- Specify the number of copies.

3 Print.

- Tap [Print] to print.
-



- [Printer Options] may not be displayed in step 2, depending on AirPrint compatibility of the application. If printer options are not available, printing is not possible from the application.
-



- To perform another operation while printing is in progress, press the Home button on your iPhone or iPad twice. The [Print Center] icon is displayed among recently used apps.
 - To check the status:
Tap [Print Center].
 - To cancel printing:
Tap [Print Center], and then tap [Cancel Printing].



Printing via Mopria (Android)

You can print from Android smartphones using the Mopria Print Service.



- 1 Download and install Mopria Print Service.**
- 2 Set Mopria Print Service to ON.**
- 3 Open the printing menu.**
 - Choose an image to print in an app on your Android smartphone (such as a photo-viewing app), and then open the printing menu.
- 4 Set up printing.**
 - As the printer, select [Canon SELPHY CP1300].
 - Specify the number of copies, paper size, and other details.
- 5 Print.**



Printing from a Camera



You can print as follows by connecting the printer to a camera compatible with DPS over IP, the PictBridge standard for Wi-Fi connections.



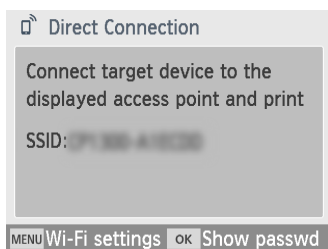
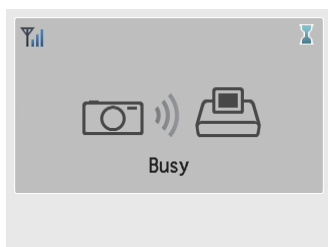
1 Connect to SELPHY from the camera.

- In the camera's Wi-Fi menu, select the SSID (network name) shown on SELPHY and enter the password.



2 Print.

- Use the camera to select images and print.
 - Once printing begins, [Busy] is displayed.
 - Do not disconnect the devices while this screen is displayed. Images may not be printed correctly or completely.
-
- The Home screen or the screen on the left is displayed when the camera is no longer connected.

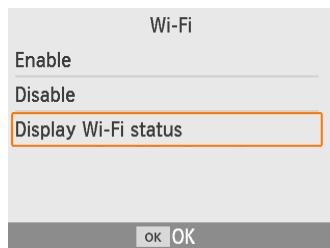


- Any date or layout settings made on the camera take precedence over print settings made on SELPHY.

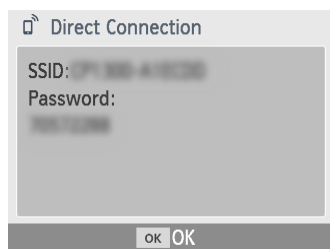


Subsequent Printing

Once you have set up SELPHY for a direct connection, an SSID is displayed in the lower right of the Home screen. To print after the first connection, select this SSID on your smartphone or camera. Check the password as follows.



- 1 Press the <(↑)> button.**
- 2 Choose [Display Wi-Fi status], and then press the <OK> button.**



- 3 Check the password.**
 - Press the <OK> button to display the password.



Other Wi-Fi Features

Besides setting up Wi-Fi image reception and printing from [Wi-Fi settings] on the Home screen, you can also check setting information and reset Wi-Fi settings.



- Choose [Wi-Fi settings], and then press the **<OK>** button.
- Choose a feature to set up, and then press the **<OK>** button.

Wi-Fi

To disable Wi-Fi connections, select [Disable].

Confirm Settings

Enables you to check the printer name, IP address, and other details.

Other Settings

- [Set Printer Name] enables you to rename the printer. Press the **<MENU>** button to access the input screen, and then enter a new printer name (📖 54).
- Select [IPv4/IPv6 Settings] ► [IPv4] to enter the IP address and subnet mask manually.
- Select [IPv4/IPv6 Settings] ► [IPv6] to enable or disable the IPv6 address.



- [IPv6] is not available when using Direct Connection.



Reset Settings

Reset Wi-Fi settings such as the printer name, access point information, and password as follows.

Entering Information

When entering a printer name, password, or other information, press the <MENU> button to access the input screen.



Entering information

- Press the <▲><▼><◀><▶> buttons to select a letter, number, or symbol, and then press the <OK> button. To enter a space, select [Space] and press the <OK> button.

Deleting information

- Press the <▲><▼><◀><▶> buttons to select [X], and then press the <OK> button.

Switching input modes

- To switch from uppercase to lowercase letters and then symbols, press the <MENU> button repeatedly.

Returning to the previous screen

- To confirm input and return to the previous screen, press the <▲><▼><◀><▶> buttons to select [Finish], and then press the <OK> button.
- To cancel input and return to the previous screen, press the <↶> button.



Printing via Wi-Fi from a Computer

Before you can print via Wi-Fi from a computer, the computer with the images to send must be connected to an access point.

- Remove any inserted memory cards or USB flash drives.
- Insert a loaded paper cassette and an ink cassette in SELPHY (📖16).
- The access point must support IEEE 802.11b/g connections (📖78).

Connecting the Printer to the Access Point

How to connect varies depending on whether the access point is WPS-compatible (📖55) or not (📖58).

WPS-Compatible Access Points

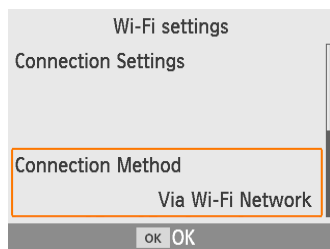
1 Check the access point.

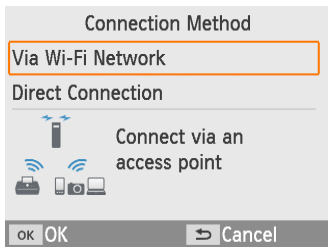
- Confirm that the access point is on and ready for communication.

2 Choose [Wi-Fi settings], and then press the <OK> button.

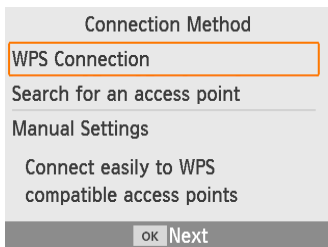


3 Choose [Connection Method], and then press the <OK> button.

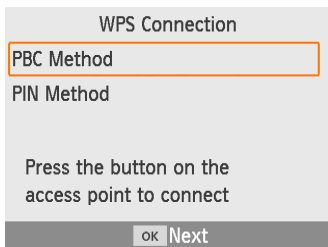




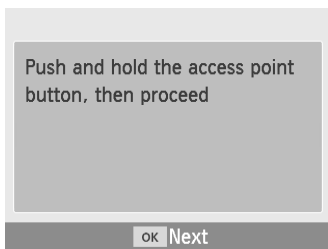
4 Choose [Via Wi-Fi Network], and then press the **<OK>** button.



5 Choose [WPS Connection], and then press the **<OK>** button.



6 Choose [PBC Method], and then press the **<OK>** button.



- The screen on the left is displayed.



7 On the access point, hold down the **WPS connection button** for a few seconds.

- For details on where the button is located and how long to press it, check the access point user manual.



Connected to access point

AccessPoint_A

OK OK

8 Establish the connection.

- On the printer, press the <OK> button.
- Press the <OK> button when the screen on the left is displayed.

9 Check the access point name.

(?) Via Wi-Fi Network

Connect target device to the displayed access point and print

SSID: AccessPoint_A

MENU Wi-Fi settings



- If you selected [PIN Method] in step 6, use the computer to specify the PIN code (displayed on the printer) on the access point, press the <OK> button on the printer, and go to step 8. For instructions on configuring PIN codes, refer to the access point user manual.



Non-WPS Access Points

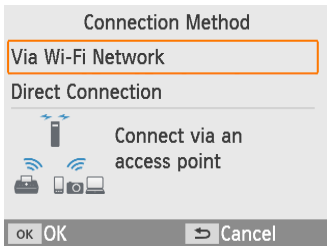
- 1 Check the access point.**
 - Confirm that the access point is on and ready for communication.
- 2 Choose [Wi-Fi settings], and then press the <OK> button.**



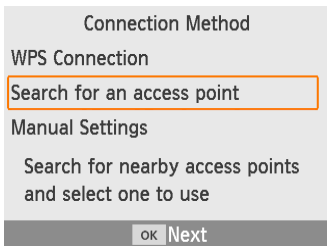
- 3 Choose [Connection Method], and then press the <OK> button.**

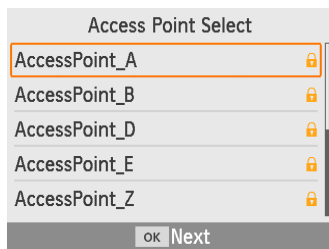


- 4 Choose [Via Wi-Fi Network], and then press the <OK> button.**

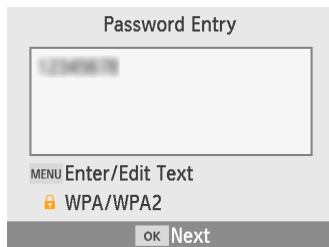


- 5 Choose [Search for an access point], and then press the <OK> button.**



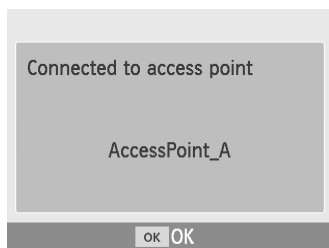


6 Choose an access point, and then press the **<OK>** button.



7 Enter the password and press the **<OK>** button.

- Press the **<MENU>** button to access the input screen, and then enter the password of the access point selected in step 6.



8 Confirm that SELPHY is now connected to the access point, and then press the **<OK>** button.



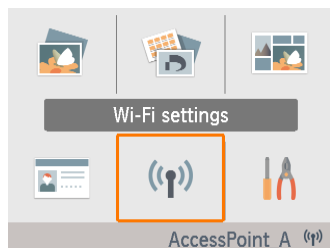
9 Check the access point name.



Printing Images (Windows)



You can print from a computer using a dedicated printer driver.



1 Confirm that SELPHY is connected to the access point.

- Confirm that the access point is identified in the lower right on the Home screen, and that the antenna icon has no red ×.

2 Install the printer driver.

- Visit the following site, download the SELPHY CP1300 printer driver, and double-click it.

<http://www.canon.com/icpd/>

- Follow the instructions displayed to complete installation.
- If the User Account Control window is displayed, follow the on-screen instructions.

3 Choose the connection method.

- On the screen to choose a connection method, select [Use with a wireless network] and click [Next].

4 To complete the installation process, choose the printer to connect to.

- On the screen to search for printers, select the printer and click [Next].
- If the printer is not shown on the printer search screen, check the computer's network settings, and if applicable, switch from a public to a private network.
- The printer driver is installed.



5 Access the printing dialog box.

- Start the photo software, select images to print, and access the printing dialog box.
- As the destination printer, select [Canon SELPHY CP1300].

6 Choose printing options.

- Choose a paper size corresponding to the size of paper and ink cassettes in SELPHY. Also choose bordered or borderless printing as an option with the listed paper sizes.
- Choose the printing orientation and number of copies, as desired.

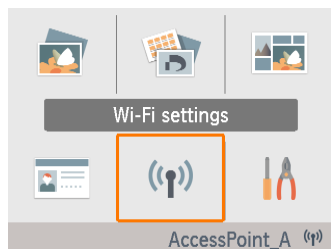
7 Print.



Printing Images (Mac OS)



You can print from a computer using AirPrint. Updating to the latest version of Mac OS is recommended.



1 Confirm that SELPHY is connected to the access point.

- Confirm that the access point is identified in the lower right on the Home screen, and that the antenna icon has no red x.

2 Access the printing dialog box.

- Start the photo software, select images to print, and access the printing dialog box.
- As the destination printer, select [Canon SELPHY CP1300].

3 Choose printing options.

- Specify the paper size, orientation, and number of copies.
- Choose one of these paper sizes.

Paper Size Description	Paper Size
P Size	Postcard
C Size	54 x 86 mm

If these sizes are not available, select [Manage Custom Sizes] as the paper size and enter the sizes manually.

4 Print.

- Click [Print] to print.



- If “Canon SELPHY CP1300” is not available as a printer in Mac OS, add SELPHY to the computer as follows.
 - ① From [System Preferences], open either [Printers & Scanners] or [Print & Scan].
 - ② Click [+] below the list.
 - ③ Select “Canon SELPHY CP1300”.
- Authentication is required in order to display the printer’s webpage from printer settings screens in Mac OS. Log in by entering ADMIN as the name and canon as the password.

If you have changed the password and cannot remember it, use [Reset Settings] in [Wi-Fi settings] or [Reset all to default] in [Setup] on SELPHY to restore the default password.



Printing via USB from a Computer

You can print from a computer by connecting SELPHY to the computer with a commercially available USB cable.

- Prepare this kind of USB cable.
 - 2.5 m (8.2 ft.) or shorter
 - SELPHY end: Mini-B
- Remove any inserted memory cards or USB flash drives.
- Insert a loaded paper cassette and an ink cassette in SELPHY (16).

Printing Images (Windows)

1 Install the printer driver.

- Visit the following site, download the SELPHY CP1300 printer driver, and double-click it.

<http://www.canon.com/icpd/>

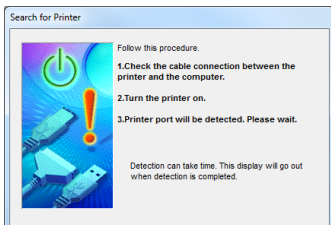
- Follow the instructions displayed to complete installation.
- If the User Account Control window is displayed, follow the on-screen instructions.

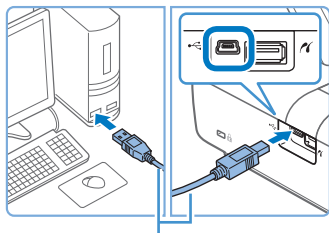
2 Choose the connection method.

- On the screen to choose a connection method, select [Use with a USB connection] and click [Next].

3 When the screen on the left is displayed, connect the printer to the computer.

- Make sure SELPHY is off.





USB cable, sold separately

- Use the USB cable to connect SELPHY to the computer.

4 Turn on the printer to complete the installation process.

- Press the <⏻> button to turn on SELPHY.
- The printer driver is installed.

5 Access the printing dialog box.

- Start the photo software, select images to print, and access the printing dialog box.
- As the destination printer, select [Canon SELPHY CP1300].

6 Choose printing options.

- Choose a paper size corresponding to the size of paper and ink cassettes in SELPHY. Also choose bordered or borderless printing as an option with the listed paper sizes.
- Choose the printing orientation and number of copies, as desired.

7 Print.



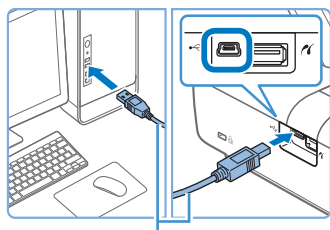
- Avoid sleep or standby mode on your computer while SELPHY is connected via USB. If the computer enters sleep mode with SELPHY connected via USB, wake the computer without disconnecting the USB cable. If recovery fails, restart the computer.



Printing Images (Mac OS)

You can print from a computer using AirPrint.

Updating to the latest version of Mac OS is recommended.



USB cable, sold separately

- 1 Connect SELPHY to the computer with a USB cable.**
- 2 Access the printing dialog box.**
 - Start the photo software, select images to print, and access the printing dialog box.
 - As the destination printer, select [Canon SELPHY CP1300].
- 3 Choose printing options.**
 - Specify the paper size, orientation, and number of copies.
 - Choose one of these paper sizes.

Paper Size Description	Paper Size
P Size	Postcard
C Size	54 x 86 mm

If these sizes are not available, select [Manage Custom Sizes] as the paper size and enter the sizes manually.

- 4 Print.**
 - Click [Print] to print.



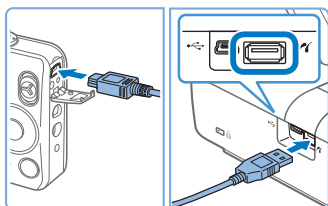
- Avoid sleep or standby mode on your computer while SELPHY is connected via USB. If the computer enters sleep mode with SELPHY connected via USB, wake the computer without disconnecting the USB cable. If recovery fails, restart the computer.



Printing via USB from a Camera


By connecting a PictBridge (USB) compatible camera, you can choose images with the camera and print.

- Prepare this kind of USB cable.
 - 2.5 m (8.2 ft.) or shorter commercially available cable
 - SELPHY end: Type A
- Remove any inserted memory cards or USB flash drives.
- Insert a loaded paper cassette and an ink cassette in SELPHY (16).



- 1** Connect SELPHY to the camera using the USB cable.



- 2** Turn on SELPHY and then the camera, and enter Playback mode.
 - Some cameras will display a  icon.
- 3** On the camera, choose images and prepare to print.
 - Use the camera to start printing.
 - After printing, turn off SELPHY and the camera and disconnect the cable.



Troubleshooting

Power

Cannot turn on SELPHY

- Confirm that the power cord is connected and plugged in correctly (📖20).
- Hold the <⏻> button until the startup screen is displayed (📖20).
- When using a battery pack, confirm that it is charged and inserted correctly.

Screen

Image display screen is not displayed

- While the ID Photo Settings screen is displayed, press the <🏠> button to display the Home screen, press the <▲><▼> buttons to choose [Select & Print], and then press the <OK> button.

Printing

Cannot print

- Confirm that SELPHY is on (📖20).
- Confirm that the paper and ink cassettes are loaded correctly (📖16, 📖17).
- Confirm that the ink sheet is not loose (📖16).
- Confirm that you are using paper designed especially for SELPHY (📖3).
- Replace the ink cassette and refill the paper cassette as needed (📖24).
- Confirm that you are using the correct combination of paper, paper cassette, and ink cassette (📖16).

Cannot display or print images on memory cards or USB flash drives

- Confirm that the memory card is fully inserted in the correct slot, with the label face-up (📖22, 23).
- Confirm that the USB flash drive is fully inserted, right-side up (📖22).
- Confirm that the image format is supported (📖22).
- Confirm that a memory card requiring the use of an adapter has not been inserted without its adapter (📖22).
- Check the formats supported for USB flash drives (📖78).



Cannot print from a camera

- Confirm that your camera supports PictBridge ([📖51](#), [📖67](#)).
- When printing via USB, confirm that SELPHY is connected directly to the camera with the USB cable ([📖67](#)).
- Confirm that your camera batteries have enough charge left. If the batteries are depleted, replace them with fully charged or new ones.
- Remove any memory cards or USB flash drives from SELPHY.

Cannot print from a computer

- Confirm that you have installed the printer driver correctly ([📖64](#)).
- Remove any inserted memory cards or USB flash drives.
- When printing via Wi-Fi, confirm that both SELPHY and the computer are correctly connected to the access point ([📖55](#)).
- When printing via USB, confirm that SELPHY is connected directly to the computer with the USB cable ([📖64](#)). The printer may not work correctly if it is connected to a computer via a USB hub.
- Windows: Confirm that the printer is not offline. If so, right-click the printer icon and bring the printer online.
- Mac OS: Confirm that you have added SELPHY to the Printer List ([📖62](#), [66](#)). If it is not listed, add SELPHY to the computer as follows.
 1. From [System Preferences], open either [Printers & Scanners] or [Print & Scan].
 2. Click [+] below the list.
 3. Select “Canon SELPHY CP1300”.

Date/file number missing when printing from memory cards or USB flash drives

- Confirm that SELPHY is set up to print the date or file number ([📖43](#)). Note that grayed-out settings on the [Print settings] screen are not available. Note that in DPOF printing, date/file number printing is configured on the camera.

Date/file number missing when printing from cameras

- Confirm that adding the date/file number is enabled on the camera. Note that under standard camera settings, the date/file number setting on SELPHY is used.



Print quality is poor

- Confirm that the ink sheet and paper are free of dirt or dust.
- Confirm that SELPHY's interior is free of dust (📖80).
- Confirm that no condensation has formed on SELPHY (📖80).
- Confirm that SELPHY is away from sources of electromagnetic waves or strong magnetic fields.

Printed colors do not match the colors displayed

- Color is produced in different ways by printers and display devices. Colors may also look different depending on the intensity and color temperature of lighting in the monitor viewing environment, as well as monitor color calibration.

Individual images are printed reduced, in only one layout position

- Change the [Page Layout] settings (📖41). When a layout in [Page Layout] other than [1-up] is selected, individual images are printed in one layout position per sheet if you print from a camera or other device that can only send one image at a time.

Printing takes too long

- SELPHY will temporarily halt printing if it exceeds a specific temperature; this does not indicate a problem. Wait until the printer cools off. During continuous printing, in hot environments, or if the printer's interior becomes hot because the rear-side air vent (📖12) is blocked, SELPHY may temporarily stop printing, causing printing to take longer.
- Printing may take some time, depending on the printing environment. If so, try printing a different way—from a memory card, via Wi-Fi, or via USB.

Cannot cancel printing

- Printing in progress, whether from a smartphone, camera, or computer, cannot be canceled from SELPHY by using the <↩> button. Use the device you are printing from to stop printing.

Paper

Paper does not fit in the cassette

- Confirm that the paper is the same size as the paper cassette (📖3).



Paper feed problems or frequent paper jams occur

- Confirm that the paper and cassette are inserted correctly (📖16, 17).
- Confirm that there are less than 19 sheets in the cassette.
- Confirm that 19 or more prints have not collected on the paper cassette.
- Confirm that you are using paper designed especially for SELPHY (📖3).

Cannot print the correct quantity (unused paper left after ink runs out)

- Some unused paper may remain if the ink runs out first.

Paper jams

- If paper protrudes from the front or back paper ejection slot (📖12), carefully pull it out. If you cannot remove the paper by gently pulling it out, never force it out. Turn the printer off and then on. Repeat until the paper is ejected. If you accidentally turn the printer off while printing, restart it and wait until the paper is ejected. If paper jams and cannot be removed, contact your retailer or a Customer Support Help Desk. Do not attempt to remove jammed paper by force, which may damage the printer.

Wi-Fi

Do not use the printer near sources of Wi-Fi signal interference, such as microwave ovens, Bluetooth devices, or other equipment operating on the 2.4 GHz band.

Printer SSID (network name) not displayed when connecting to a camera or smartphone

- As the connection method, choose [Direct Connection] (📖47, 52).
- Keep the printer near the camera or smartphone, without objects between them.

Access point not displayed on the printer

Cannot connect the printer to the access point

- As the connection method, choose [Via Wi-Fi Network] (📖55).
- Confirm that the access point is on and ready for communication. For instructions on how to check, refer to the access point user manual.
- If there are many access points but the required one is not listed, connect using WPS (📖55) or by selecting [Manual Settings] when connecting via an access point (📖58).



- Keep the printer near the access point, without objects between them.
- Confirm that the password is correct, and try connecting again.
- Confirm that the access point channel is between 1 – 11. Instead of auto channel assignment, it is advisable to specify a channel in this range manually. For instructions on checking or adjusting the settings, refer to the access point user manual.
- If the access point filters communication by MAC or IP addresses, on the access point, register the printer information shown when you check the settings (📖53). For instructions on checking or adjusting the settings, refer to the access point user manual.
- In WEP networks without DHCP, set the IP address manually (📖53).

Cannot connect via Wi-Fi

- Try restarting SELPHY. If a connection still cannot be established, check the settings of the access point or other device for the Wi-Fi connection.
- If WPS connection is not possible, try connecting by using [Search for an access point] (📖58) or by selecting [Manual Settings] when connecting via an access point (📖58).

Can connect to access point, but cannot print

- Remove any inserted memory cards or USB flash drives.
- Printing is not possible when the printer is already printing a job from another device, or when the printer is connected to a camera.
- Confirm that the camera, smartphone, or computer you are printing from is connected to the same access point as SELPHY.
- Check the access point password and try to connect again (📖52).
- If a message is displayed after you enter the correct password and press the <OK> button (📖59), confirm that DHCP server functionality is enabled on the access point, and make sure connection settings on SELPHY such as the IP address are correct (📖53).
- Check the access point settings to confirm that communication between the devices is allowed.



Printing takes too long, or the Wi-Fi connection is lost

- Do not use the printer near sources of Wi-Fi signal interference, such as microwave ovens, Bluetooth devices, or other equipment operating on the 2.4 GHz band. Note that even when [📄] or [{"⌂"}] is displayed, image transmission may take some time.
- In direct connections (📖48, 51), keep the printer near the camera or smartphone, without objects in between.
- In connections via an access point (📖55), keep the printer near the access point, without objects in between.

Cannot connect via Wi-Fi from the computer

- Confirm that the printer driver is installed correctly in Windows.
- In Windows, enable [Network Discovery].
- In Mac OS, add SELPHY as a printer for the computer (📖62).

Message displayed when connecting a camera or smartphone

- Up to 8 devices can be connected at once using [Direct Connection], and IP addresses can be allocated to up to 32 devices. Attempting to connect more than 8 devices will display a message. In this case, use one of the connected devices to disconnect from the printer, press the <OK> button on the printer to clear the message, and then use the device for the new connection to connect to the printer. If disconnection is not possible using a connected device, turn off the printer momentarily to disconnect all devices, and then turn the printer on again.

Error Messages

Error messages indicate problems with SELPHY. When error messages include troubleshooting tips, follow the instructions. If only an error message is displayed, follow the suggestions in “Troubleshooting” (📖68).

If the problem persists, contact a Customer Support Help Desk.



- If a problem occurs while SELPHY is connected to another device, an error message may also be displayed on the device. Check both SELPHY and the device.



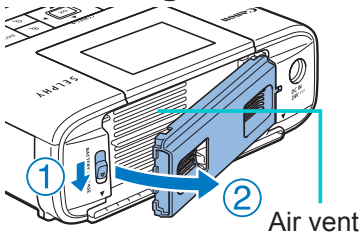
Appendix

Printing without a Power Outlet

To print where no power outlet is available, use Battery Pack NB-CP2LH (sold separately). On a full charge, up to about 54 sheets* of postcard-size paper can be printed.

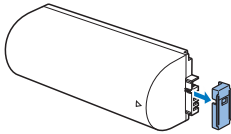
* According to Canon testing. May vary depending on printing conditions.

Attaching the Battery Pack

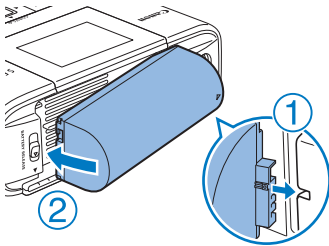


1 Remove the battery pack mounting cover.

- With the switch held in the direction of the arrow (①), pull the cover off (②) to remove it.



2 Remove the battery terminal cover.



3 Insert the battery pack.

- Slide the terminal-end in the direction of the arrow (①) and insert the other end (②) until it clicks into place.



- Battery Pack NB-CP2L (sold separately) is also supported. On a full charge, up to about 36 sheets* of postcard-size paper can be printed.

* According to Canon testing. May vary depending on printing conditions.



Charging the Battery Pack before Use

- Once SELPHY is plugged in (20), charging starts, and blinks on the screen.
 - After charging is finished in about four hours (at room temperature), is no longer displayed.
 - SELPHY can be used even while is blinking, by turning it on (20). However, charging stops. When SELPHY is turned off, starts blinking again and charging resumes.
-



- For battery precautions, refer to the battery user manual.
- When is displayed, before charging, make sure SELPHY is in an environment at operating temperature (78) and has adjusted to the ambient temperature.
- When is displayed in red, the battery pack has reached the end of its useful life. Purchase a new battery pack.
- display can be cleared by holding down any button other than the < > button for at least 3 seconds. is displayed for about 10 seconds if you press any button other than < > while the screen is off and the battery pack is charging.



Storing Prints

- To remove any extra paper from the edges of a print, fold the paper along the perforations and tear the edges off.
- When writing on prints, use an oil-based pen.
- To prevent discoloration, do not store prints where temperatures exceed 40 °C (104 °F), in humid or dusty places, or in direct sunlight.
- Also avoid the following actions, which may cause discoloration, fading, or bleeding: sticking tape on the printed surface, allowing the printed surface to contact vinyl or plastic, applying alcohol or volatile solvents to the printed surface, or leaving the printed surface pressed firmly against other surfaces or objects over extended periods.
- When storing prints in an album, choose an album with photo covers made of nylon, polypropylene, or cellophane.



- Color may change over time or depending on storage conditions. Canon cannot be held liable for discoloration.

After Printing

- ① Turn off SELPHY (📖20) and remove any memory cards or USB flash drives.
- ② Lower the monitor for storage.
- ③ Unplug the power cord from the outlet and disconnect the adapter plug from SELPHY.
 - If the compact power adapter is still warm, wait for it to cool down before putting it away.
- ④ Remove the paper cassette and close the paper cassette compartment cover. Leave any remaining paper in the cassette, and store the cassette in a dark, cool, and dry place away from dust.
 - Leave the ink cassette in SELPHY.
 - Store SELPHY on a flat surface, away from sunlight and dust. Any dust that gets inside SELPHY may cause white banding on photos or damage the printer.



- Store any extra ink cassettes in the original package or a bag, away from sunlight and dust.
- Store any unused paper or ink cassettes in their unopened packages, away from sunlight.



Specifications

Printing Method	Dye-sublimation thermal transfer (with overcoating)	
Resolution	300 x 300 dpi	
Gradation	256 shades per color	
Ink	Dedicated color ink (Y/M/C/overcoating)	
Paper	Postcard (photo paper) and card size (photo paper, full-page labels, 8-label sheets, and square labels)	
Paper Size	With perforated margins	Without perforated margins
Postcard	100.0 x 177.0 mm (3.94 x 6.97 in.)	100.0 x 148.0 mm (3.94 x 5.83 in.)
Card	83.0 x 86.0 mm (3.27 x 3.39 in.)	54.0 x 86.0 mm (2.13 x 3.39 in.)
Full-page label	54.0 x 86.0 mm (2.13 x 3.39 in.)	–
Label on 8-label sheet	22.0 x 17.3 mm (0.87 x 0.68 in.)	–
Square label	54.0 x 54.0 mm (2.13 x 2.13 in.)	–
Printing Speed*1		
Postcard	Approx. 47 sec.	(Approx. 58 sec.)*2
Card	Approx. 27 sec.	(Approx. 32 sec.)*2
Feeding System	Auto feeding from paper cassette	
Ejection System	Auto ejection onto paper cassette	
Monitor	Tilting 8.1 cm (3.19 in.) TFT LCD color monitor	



Interfaces

Hi-Speed USB

Type A port for PictBridge-compatible devices

Mini-B port for computers

Memory Cards

SD, SDHC, SDXC, miniSD*³, miniSDHC*³,
microSD*³, microSDHC*³ and microSDXC*³

Wireless LAN

Standards: IEEE 802.11b/g

Supported Channels: 1 – 11

Communication Modes: Infrastructure mode*⁴

Transmission: DSSS (IEEE 802.11b) and OFDM
(IEEE 802.11g)

Security: No security, WEP, WPA-PSK (AES/
TKIP), and WPA2-PSK (AES/TKIP)

USB Flash Drives

FAT or exFAT format only

Operating Temperature

5 – 40 °C (41 – 104 °F)

Operating Humidity

20 – 80%

Power

Compact Power Adapter CA-CP200 B

Battery Pack NB-CP2LH (sold separately)

60 W or less (standby: 4 W or less)

Power Consumption

Dimensions

180.6 x 63.3 x 135.9 mm (7.11 x 2.49 x 5.35 in.)

Weight (printer body only)

Approx. 860 g (1.90 lb.)

*1 From the initial yellow printing pass until ejection

*2 Time in parentheses is with a [Print Finish] pattern (1 – 3) selected.

*3 Requires an optional dedicated adapter

*4 Supports Wi-Fi Protected Setup



Compact Power Adapter CA-CP200 B

Rated Input	100 – 240 V AC (50/60 Hz), 1.0 A (100 V) – 0.6 A (240 V)
Rated Output	24 V DC, 1.8 A
Operating Temperature	0 – 40 °C (32 – 104 °F)



Battery Pack NB-CP2LH (Sold Separately)

Type	Rechargeable lithium-ion battery
Nominal Voltage	22.2 V DC
Nominal Capacity	1290 mAh
Charging Cycles	Approx. 300 times
Operating Temperature	5 – 40 °C (41 – 104 °F)

- All data is based on tests by Canon.
- Printer specifications or appearance are subject to change without notice.



Handling and Maintenance

- Do not subject the printer to excessive force, which may damage the printer or cause paper jams.
- Do not expose the printer to insecticides or other volatile substances. Additionally, do not store the printer in contact with rubber, vinyl, or plastic products over extended periods, which may cause deformation of the casing.
- Avoid condensation on the printer, which may happen when moving the printer from cold to warm environments. Put the printer in a sealed plastic bag and allow it to adjust to the new temperature before removing the bag. If condensation forms, allow the printer to dry naturally at room temperature before using again.
- When the printer becomes dirty, wipe it with a soft, dry cloth.
- If the air vent ( 12) becomes dusty, remove the ink cassette ( 24) before wiping the dust away, to prevent dust from getting inside and affecting print quality.



- Never wipe the printer with solvents, such as benzene or thinner, or neutral detergent, which may cause deformation or peeling of the casing.



Trademarks and Licenses

- Microsoft and Windows are trademarks or registered trademarks of Microsoft Corporation in the United States and/or other countries.
- Macintosh and Mac OS are trademarks of Apple Inc., registered in the U.S. and other countries.
- App Store, iPhone, iPad and AirPrint are trademarks of Apple Inc.
- The SDXC logo is a trademark of SD-3C, LLC.
- Wi-Fi®, Wi-Fi Alliance®, WPA™, WPA2™ and Wi-Fi Protected Setup™ are trademarks or registered trademarks of the Wi-Fi Alliance.
- All other trademarks are the property of their respective owners.
- This device incorporates exFAT technology licensed from Microsoft.
- Portions of the code used in this firmware are based in part on the work of the Independent JPEG Group.
- Based on XySSL: Copyright (C) 2006-2008 Christophe Devine
Copyright (C) 2009 Paul Bakker <polarssl_maintainer at polarssl dot org> All rights reserved.

Disclaimer

- Reprinting, transmitting, or storing in a retrieval system any part of this guide without the permission of Canon is prohibited.
- Canon reserves the right to change the contents of this guide at any time without prior notice.
- Illustrations and screenshots in this guide may differ slightly from the actual equipment.
- The above items notwithstanding, Canon accepts no liability for damages due to mistaken operation of the products.



Wi-Fi (Wireless LAN) Precautions

- Countries and Regions Permitting WLAN Use
 - Use of WLAN is restricted in some countries and regions, and illegal use may be punishable under national or local regulations. To avoid violating WLAN regulations, visit the Canon website to check where use is allowed.
 - Note that Canon cannot be held liable for any problems arising from WLAN use in other countries and regions.
- Doing any of the following may incur legal penalties:
 - Altering or modifying the product
 - Removing the certification labels from the product
- According to foreign exchange and foreign trade law regulations, export permission (or service transaction permission) from the Japanese government is necessary to export strategic resources or services (including this product) outside Japan.
- Because this product includes American encryption software, it falls under U.S. Export Administration Regulations, and cannot be exported to or brought into a country under U.S. trade embargo.
- Be sure to make notes of the wireless LAN settings you use. The wireless LAN settings saved to this product may change or be erased due to incorrect operation of the product, the effects of radio waves or static electricity, or accident or malfunction. Be sure to make notes of wireless LAN settings as a precaution. Please note that Canon accepts no responsibility for direct or indirect damages or loss of earnings resulting from a degradation or disappearance of content.
- When transferring this product to another person, disposing of it, or sending it for repair, be sure to note the wireless LAN settings and reset the product to its default settings (erase settings) if necessary.
- Canon will not make compensation for damages resulting from loss or theft of the product.
Canon accepts no responsibility for damages or loss resulting from unauthorized access or use of target devices registered on this product due to loss or theft of the product.



- Be sure to use the product as directed in this guide.
Be sure to use the wireless LAN function of this product within the guidelines noted in this guide. Canon accepts no responsibility for damages or loss if the function and product are used in ways other than as described in this guide.
 - Do not use the wireless LAN function of this product near medical equipment or other electronic equipment.
Use of the wireless LAN function near medical equipment or other electronic equipment may affect operation of those devices.
-

Radio Wave Interference Precautions

This product may receive interference from other devices that emit radio waves. To avoid interference, be sure to use this product as far away as possible from such devices, or avoid using the devices at the same time as this product.

Security Precautions

Because Wi-Fi uses radio waves to transmit signals, security precautions more stringent than when using a LAN cable are required.

Keep the following points in mind when using Wi-Fi.

- Only use networks you are authorized to use.
This product searches for Wi-Fi networks in the vicinity and displays the results on the screen.
Networks you are not authorized to use (unknown networks) may also be displayed. However, attempting to connect to or using such networks could be regarded as unauthorized access. Be sure to use only networks you are authorized to use, and do not attempt to connect to other unknown networks.

If security settings have not been properly set, the following problems may occur.

- Transmission monitoring
Third parties with malicious intent may monitor Wi-Fi transmissions and attempt to acquire the data you are sending.



- **Unauthorized network access**

Third parties with malicious intent may gain unauthorized access to the network you are using to steal, modify, or destroy information.

Additionally, you could fall victim to other types of unauthorized access such as impersonation (where someone assumes an identity to gain access to unauthorized information) or springboard attacks (where someone gains unauthorized access to your network as a springboard to cover their tracks when infiltrating other systems).

To prevent these types of problems from occurring, be sure to thoroughly secure your Wi-Fi network.

Only use this product's Wi-Fi function with a proper understanding of Wi-Fi security, and balance risk and convenience when adjusting security settings.

While Printing

Do not disconnect the printer from other devices until printing is finished, which may cause incomplete or incorrect prints.

Precautions before Repair, Disposal, or Transfer of Ownership

If you have saved security information such as Wi-Fi passwords on SELPHY, this information may still be on the printer.

Before transferring ownership, disposing of the product, or sending it for repair, do the following to prevent leakage of the information.

- Erase saved security information by choosing [Reset Settings] in the Wi-Fi settings.



WPA Supplicant License

WPA Supplicant

Copyright (c) 2003-2012, Jouni Malinen <j@w1.fi> and contributors All Rights Reserved. This program is licensed under the BSD license (the one with advertisement clause removed).

If you are submitting changes to the project, please see CONTRIBUTIONS file for more instructions.

License

This software may be distributed, used, and modified under the terms of BSD license: Redistribution and use in source and binary forms, with or without modification, are permitted provided that the following conditions are met:

1. Redistributions of source code must retain the above copyright notice, this list of conditions and the following disclaimer.
2. Redistributions in binary form must reproduce the above copyright notice, this list of conditions and the following disclaimer in the documentation and/or other materials provided with the distribution.
3. Neither the name(s) of the above-listed copyright holder(s) nor the names of its contributors may be used to endorse or promote products derived from this software without specific prior written permission.

THIS SOFTWARE IS PROVIDED BY THE COPYRIGHT HOLDERS AND CONTRIBUTORS "AS IS" AND ANY EXPRESS OR IMPLIED WARRANTIES, INCLUDING, BUT NOT LIMITED TO, THE IMPLIED WARRANTIES OF MERCHANTABILITY AND FITNESS FOR A PARTICULAR PURPOSE ARE DISCLAIMED. IN NO EVENT SHALL THE COPYRIGHT OWNER OR CONTRIBUTORS BE LIABLE FOR ANY DIRECT, INDIRECT, INCIDENTAL, SPECIAL, EXEMPLARY, OR CONSEQUENTIAL DAMAGES (INCLUDING, BUT NOT LIMITED TO, PROCUREMENT OF SUBSTITUTE GOODS OR SERVICES; LOSS OF USE, DATA, OR PROFITS; OR BUSINESS INTERRUPTION) HOWEVER CAUSED AND ON ANY THEORY OF LIABILITY, WHETHER IN CONTRACT, STRICT LIABILITY, OR TORT (INCLUDING NEGLIGENCE OR OTHERWISE) ARISING IN ANY WAY OUT OF THE USE OF THIS SOFTWARE, EVEN IF ADVISED OF THE POSSIBILITY OF SUCH DAMAGE.

* The above is written in English due to stipulation.