

BISSELL®

WASH USER GUIDE



54K25

IMPORTANT SAFETY INSTRUCTIONS

READ ALL INSTRUCTIONS BEFORE USING YOUR APPLIANCE.

Unplug from outlet when not in use and before conducting maintenance. When using an electrical appliance, basic precautions should be observed, including the following:

WARNING

TO REDUCE THE RISK OF FIRE, ELECTRIC SHOCK, OR INJURY:

- » This appliance can be used by children aged from 8 years and above and persons with reduced physical, sensory or mental capabilities or lack of experience and knowledge if they have been given supervision or instruction concerning use of the appliance in a safe way and understand the hazards involved. Cleaning and user maintenance shall not be made by children without supervision.
- » Children should be supervised to ensure that they do not play with the appliance.
- » Keep hair, loose clothing, fingers, and all parts of body away from openings and moving parts of the appliance and its accessories.
- » Unplug from electrical socket when not in use, before cleaning, maintaining or servicing the appliance, and if your appliance has an accessory tool with a moving brush, before connecting or disconnecting the tool.
- » If the supply cable is damaged, it must be replaced by the manufacturer, its service agent, or similarly qualified person in order to avoid a hazard.
- » Do not run appliance over cable.
- » Use only the type and amount of liquids specified under the operations section of this guide.
- » Do not leave appliance when plugged in.
- » Do not use with damaged cable or plug.
- » Do not pull or carry by cable, use cable as a handle, close door on cable, or pull cable around sharp edges or corners.
- » Keep cable away from heated surfaces.
- » To unplug, grasp the plug, not the cable.
- » Do not handle plug or appliance with wet hands.
- » Turn off all controls before unplugging.
- » Hold plug when rewinding onto cord reel. Do not allow plug to whip when rewinding.
- » Plastic film can be dangerous. To avoid danger of suffocation, keep away from children.
- » Use only as described in this user guide.
- » Use only manufacturer's recommended attachments.
- » Do not immerse in water or liquid.
- » If appliance is not working as it should, has been dropped, damaged, left outdoors, or dropped into water; do not attempt to operate it and have it repaired at an authorized service center.
- » Do not put any object into openings.
- » Do not use with any opening blocked; keep free of dust, lint, hair, and anything that may reduce air flow.
- » Use extra care when cleaning on stairs.
- » Do not use to pick up flammable or combustible liquids, such as petroleum, or use in areas where they may be present.
- » Do not pick up toxic material (chlorine bleach, ammonia, drain cleaner, etc.)
- » Do not use appliance in an enclosed space filled with vapours given off by oil base paint, paint thinner, some mothproofing substances, flammable dust, or other explosive or toxic vapours.
- » Do not pick up hard or sharp objects such as glass, nails, screws, coins, etc.
- » Keep appliance on a level surface.
- » Do not pick up anything that is burning or smoking, such as cigarettes, matches, or hot ashes.
- » If your appliance has a motorized brushroll, do not leave machine running in the same spot without the handle fully upright.
- » Do not use outdoors.
- » Always connect to a properly earthed electrical socket.
- » Do not modify earthed plug.
- » Liquid must not be directed towards equipment containing electrical components.
- » Do not immerse. Use only on surfaces moistened by the cleaning process. Use only BISSELL cleaning products intended for use with this machine.
- » Always install float before any wet pick-up operation.
- » If your appliance is fitted with a nonrewireable BS 1363 plug it must not be used unless a 13 amp (ASTA approved to BS 1362) fuse is fitted in the carrier contained in the plug. Spares may be obtained from your BISSELL supplier. If for any reason the plug is cut off, it must be disposed of, as it is an electric shock hazard should it be inserted into a 13 amp socket.

SAVE THESE INSTRUCTIONS

FOR OPERATION ON A 220-240 VOLT A.C. 50-60 HZ POWER SUPPLY ONLY.

This model is for household use only.

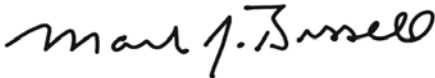
Thanks for buying a BISSELL deep cleaner

We're glad you purchased a BISSELL carpet cleaner. Everything we know about floor care went into the design and construction of this complete, high-tech home cleaning system.

Your BISSELL carpet cleaner is well made, and we back it with a limited two-year guarantee. We also stand behind it with a knowledgeable, dedicated Consumer Care department, so, should you ever have a problem, you'll receive fast, considerate assistance.

My great-grandfather invented the floor sweeper in 1876. Today, BISSELL is a global leader in the design, manufacture, and service of high quality homecare products like your BISSELL carpet cleaner.

Thanks again, from all of us at BISSELL.




A handwritten signature in black ink that reads "Mark J. Bissell". The signature is written in a cursive, flowing style.

Mark J. Bissell
Chairman & CEO

Contents

Safety Instructions.....	2
Product View.....	5
Assembly	6
Operations	6-8
Maintenance & Care	9
Troubleshooting	10
Notes	11
Guarantee.....	12
Consumer Care.....	12

<h2>TIPS</h2>	<ul style="list-style-type: none">» Deep cleaning stairs and high-traffic areas on a regular basis helps prolong carpet life.» Deep cleaning carpeting regularly can reduce dust and allergens in your home.
---------------	---

	WARNING	AN ACTION OR ATTENTION IS NEEDED TO THIS AREA IN ORDER TO REDUCE THE RISK OF ELECTRIC SHOCK, FIRE, OR INJURY
	GUIDE	READ USER GUIDE FOR COMPLETE SAFETY AND USER INSTRUCTIONS
	WEEE	DO NOT THROW THE APPLIANCE AWAY WITH THE NORMAL HOUSHOLD WASTE AT THE END OF ITS LIFE, BUT HAND IT IN AT AN OFFICIAL COLLECTION POINT FOR RECYCLING. BY DOING THIS YOU WILL HELP TO PRESERVE THE ENVIRONMENT.

Product View

- 1 Spray Trigger
- 2 Power Cord
- 3 Handle Assembly
- 4 Lower Cord Wrap
- 5 Upper Body
- 6 Lower Body
- 7 Collection Tank
- 8 Vent Cover (Containing Foam Filter)
- 9 Collection Tank Latch
- 10 Removable Nozzle
- 11 Quick Release Cord Wrap™
- 12 Clean Water/Solution Tank
- 13 Wheels
- 14 Power Switch
- 15 Detent Lever



Cleaning fluid

Keep plenty of genuine BISSELL 2X formula on hand so you can clean and protect whenever it fits your schedule. Always use genuine BISSELL deep cleaning formulas. Non-BISSELL cleaning solutions may harm the machine and will void the guarantee.

WARNING

To reduce the risk of fire and electric shock due to internal component damage, use only BISSELL cleaning fluids intended for use with the deep cleaner.

Assembly

Your deep cleaner assembles quickly and easily. The only tool you will need for assembly is a Phillips head screwdriver.

1. Slide upper body into lower body.
2. Secure with screws.

NOTE: The screws can be found taped to the handle.

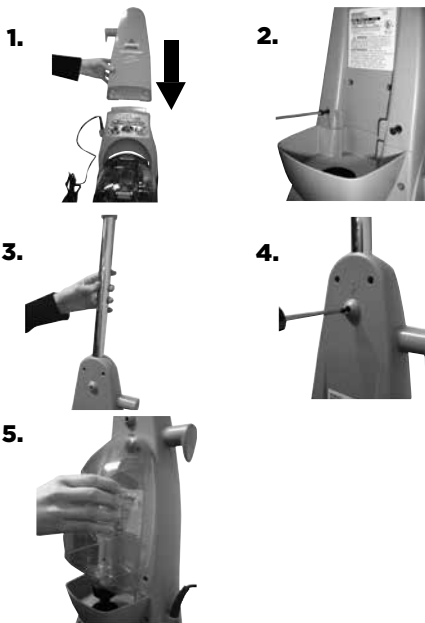
3. Slide handle assembly down into upper body until it will go no further. Align screw slots.

4. Secure with screw.

5. Place clean water/solution tank on back of unit.

WARNING

Do not plug in your deep cleaner until you have completely assembled it per the instructions and are familiar with all instructions and operating procedures.



Operations

Before you clean

1. Remove easily moved furniture (chairs, lamps, coffee/cocktail tables, etc.) from room if needed.

2. Remove loose dirt and impediments before cleaning.

3. Decide where to begin. Plan to leave a path open to empty soiled water and refill cleaner.

Note: Carpeting will dry in three to four hours, depending on carpet style and air circulation in room. A floor fan speeds drying.

Operations

Fill the tank

1. Remove the clean water/solution tank by lifting it straight up, then away from the lower body.
2. Unscrew the black cap at the bottom of the clean water/solution tank.
3. Fill to the FORMULA line with BISSELL 2X cleaning formula. Fill the rest of the tank with hand hot (60°C/140°F MAX) tap water to the water fill line. Replace and tighten the black cap.

NOTE: Do not boil water or microwave water as it can damage the tank.

4. Place clean water/solution tank on lower body.
5. Rotate Quick Release Cord Wrap™ to release the power cord and plug into an outlet.

WARNING

To reduce the risk of fire, use only BISSELL deep cleaning formula for full size machines in your deep cleaner. Use of cleaning formulas that contain lemon or pine oil may damage this appliance and void the guarantee. Chemical spot cleaners or solvent-based soil removers should not be used. These products may react with the plastic materials used in your deep cleaner causing cracking or pitting.

2.



Tip

» Deep cleaning spots, spills, and high traffic areas on a regular basis can prolong carpet life..

Carpet cleaning

1. With your foot, press the red power switch [located in foot of unit] ON .
2. With foot, press the detent lever on left side of lower body.
3. Depress spray trigger to spray cleaning solution. **Do not overwet.**
4. To suction up water, repeat motion over same area without pressing the spray trigger.
5. Repeat steps 3 and 4 until no more dirt can be removed.
6. Continue to clean entire carpet, working in 1m x 1m sections.
7. Empty the collection tank when dirty water reaches the full line, or when the clean water/solution tank is empty.
8. If floor nozzle stops spraying, turn power switch OFF and check water and cleaning solution levels. Refill if needed.



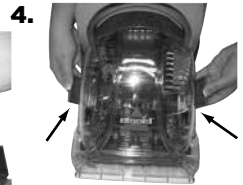
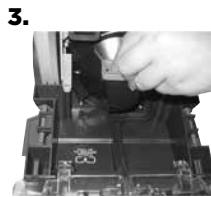
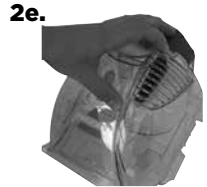
Tip

It is recommended that every time your clean water/solution tank needs refilling, that you empty the contents of the collection tank. If the collection tank gets too full, you may begin to see foam spitting out of the vent cover. If this happens, empty the collection tank.

Operations

Empty the collection tank

1. Turn power switch OFF and unplug power cord from outlet.
2. Remove and empty collection tank.
 - a. Release collection tank latches [1 each side] by pulling up from bottom of latch and then out.
 - b. Carefully remove collection tank from lower body by lifting handle.
 - c. Carry collection tank to a toilet or sink. To empty, pour out contents using opening at back of tank.
 - d. Rinse collection tank thoroughly.
 - e. Remove vent cover from top of collection tank by pulling the tab on top and pulling up. Remove foam filter from vent cover. Rinse filter thoroughly and replace back into vent cover. Replace vent cover back into collection tank, making sure the tab clicks back into the locked position.
3. Remove lint and hair from red gasket in base of unit. **(Do not remove gasket)**
4. Clean nozzle window by lifting latch and removing from machine. Rinse under running water. When finished replace nozzle and secure with latch.
5. Replace collection tank on base of unit and secure with latches.




Maintenance & Care

When you're done

1. Turn power switch OFF.
2. Unplug power cord from outlet.
3. Remove and empty collection tank.
 - a. Release collection tank latches [1 each side] by pulling up from bottom of latch and then out.
 - b. Carefully remove collection tank from lower body by lifting handle.
 - c. Carry collection tank to a toilet or sink. To empty, pour out contents using opening at back of tank.
 - d. Rinse collection tank thoroughly.
 - e. Remove vent cover from top of collection tank by pulling the tab on top and pulling up. Remove foam filter from vent cover. Rinse filter thoroughly and replace back into vent cover. Replace vent cover back into collection tank, making sure the tab clicks back into the locked position.
4. Remove lint and hair from red gasket in base of unit. **(Do not remove gasket)**
5. Clean nozzle window by lifting latch and removing from machine. Rinse under running water. When finished replace nozzle and secure with latch.
6. Replace collection tank on lower body and secure with latches.
7. Wrap power cord around Quick Release Cord Wrap™ on side of deep cleaner.
8. Wipe all surfaces with a soft cloth. Store cleaner upright in a protected, dry area.

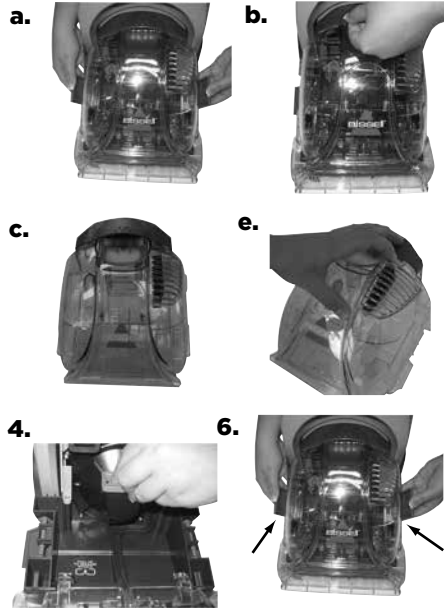
NOTE: You may have cleaning solution remaining in the clean water/solution tank. You may store your deep cleaner this way for the next cleaning task, but never keep soiled solution in the collection tank.

WARNING

To reduce the risk of electric shock, push power button  off and disconnect plug from electrical outlet before performing maintenance or troubleshooting checks.

CAUTION

Do not store unit where freezing may occur. Damage to internal components may result.



Troubleshooting

WARNING

To reduce the risk of electric shock, push power button  off and disconnect plug from electrical outlet before performing maintenance or troubleshooting checks.

Problem	Possible causes	Remedies
Reduced spray OR no spray	Clean water/solution tank empty.	Refill tank with water and formula.
	Clean water/solution tank cap clogged.	Soak tank cap in warm water and then rinse under running water.
Deep cleaner not picking up cleaning solution	Collection tank not aligned/secured.	Check tank for proper alignment and secure with side latches.
	Collection tank full.	Empty tank.
	Removable nozzle installed improperly.	Align four "hooks" into bottom first, then snap into place on top.
	Removable nozzle full of debris.	Remove nozzle and rinse under running water.
	Red lint screen under collection tank clogged.	Remove debris from lint screen.

Notes

Consumer Guarantee

This Guarantee only applies outside of the USA and Canada. It is provided by BISSELL International Trading Company BV ("BISSELL").

This Guarantee is provided by BISSELL. It gives you specific rights. It is offered as an additional benefit to your rights under law. You also have other rights under law which may vary from country to country. You can find out about your legal rights and remedies by contacting your local consumer advice service. Nothing in this Guarantee will replace or lessen any of your legal rights or remedies. If you need additional instruction regarding this Guarantee or have questions regarding what it may cover, please contact BISSELL Consumer Care or contact your local distributor.

This Guarantee is given to the original purchaser of the product from new and is not transferable. You must be able to evidence the date of purchase in order to claim under this Guarantee.

Limited 2 Year Guarantee (from the date of purchase by original purchaser)

Subject to the *EXCEPTIONS AND EXCLUSIONS identified below, BISSELL will repair or replace (with new or remanufactured components or products), at BISSELL's option, free of charge, any defective or malfunctioning part or product.

BISSELL recommends that the original packaging and evidence of the date of purchase be kept for the duration of the Guarantee period in case the need arises within the period to claim on the Guarantee. Keeping the original packaging will assist with any necessary re-packaging and transportation but is not a condition of the Guarantee.

If your product is replaced by BISSELL under this Guarantee, the new item will benefit from the remainder of the term of this Guarantee (calculated from the date of the original purchase). The period of this Guarantee shall not be extended whether or not your product is repaired or replaced.

*EXCEPTIONS AND EXCLUSIONS FROM THE TERMS OF THE GUARANTEE

This Guarantee applies to products used for personal domestic use and not commercial or hire purposes. Consumable components such as filters, belts and mop pads, which must be replaced or serviced by the user from time to time, are not covered by this Guarantee.

This Guarantee does not apply to any defect arising from fair wear and tear. Damage or malfunction caused by the user or any third party whether as a result of accident, negligence, abuse, neglect, or any other use not in accordance with the User Guide is not covered by this Guarantee.

An unauthorised repair (or attempted repair) may void this Guarantee whether or not damage has been caused by that repair/attempt.

Removing or tampering with the Product Rating Label on the product or rendering it illegible will void this Guarantee.

SAVE AS SET OUT BELOW BISSELL AND ITS DISTRIBUTORS ARE NOT LIABLE FOR ANY LOSS OR DAMAGE THAT IS NOT FORESEEABLE OR FOR INCIDENTAL OR CONSEQUENTIAL DAMAGES OF ANY NATURE ASSOCIATED WITH THE USE OF THIS PRODUCT INCLUDING WITHOUT LIMITATION LOSS OF PROFIT, LOSS OF BUSINESS, BUSINESS INTERRUPTION, LOSS OF OPPORTUNITY, DISTRESS, INCONVENIENCE OR DISAPPOINTMENT. SAVE AS SET OUT BELOW BISSELL'S LIABILITY WILL NOT EXCEED THE PURCHASE PRICE OF THE PRODUCT.

BISSELL DOES NOT EXCLUDE OR LIMIT IN ANY WAY ITS LIABILITY FOR (A) DEATH OR PERSONAL INJURY CAUSED BY OUR NEGLIGENCE OR THE NEGLIGENCE OF OUR EMPLOYEES, AGENTS OR SUBCONTRACTORS; (B) FRAUD OR FRAUDULENT MISREPRESENTATION; (C) OR FOR ANY OTHER MATTER WHICH CANNOT BE EXCLUDED OR LIMITED UNDER LAW.

Consumer Care

If your BISSELL product should require service or to claim under our limited guarantee, please contact us as follows:

Website:

www.BISSELL.com

Email:

info@bisselldirect.co.uk

Telephone:

0344-888-6644

Write:

BISSELL Homecare (Overseas) Inc.
Ground Floor
226 Berwick Avenue
Slough, Berkshire, SL1 4QT
United Kingdom

Visit the BISSELL website: www.BISSELL.com

When contacting BISSELL, have model number of cleaner available.

Please record your Model Number: _____ Please record your Purchase Date: _____

NOTE: Please keep your original sales receipt. It provides proof of the date of purchase in the event of a Guarantee claim. See Guarantee for details.



©2017 BISSELL Homecare, Inc.
Grand Rapids, Michigan
All rights reserved. Printed in China
Part Number 161-2836 07/17
Visit our website at: www.BISSELL.com