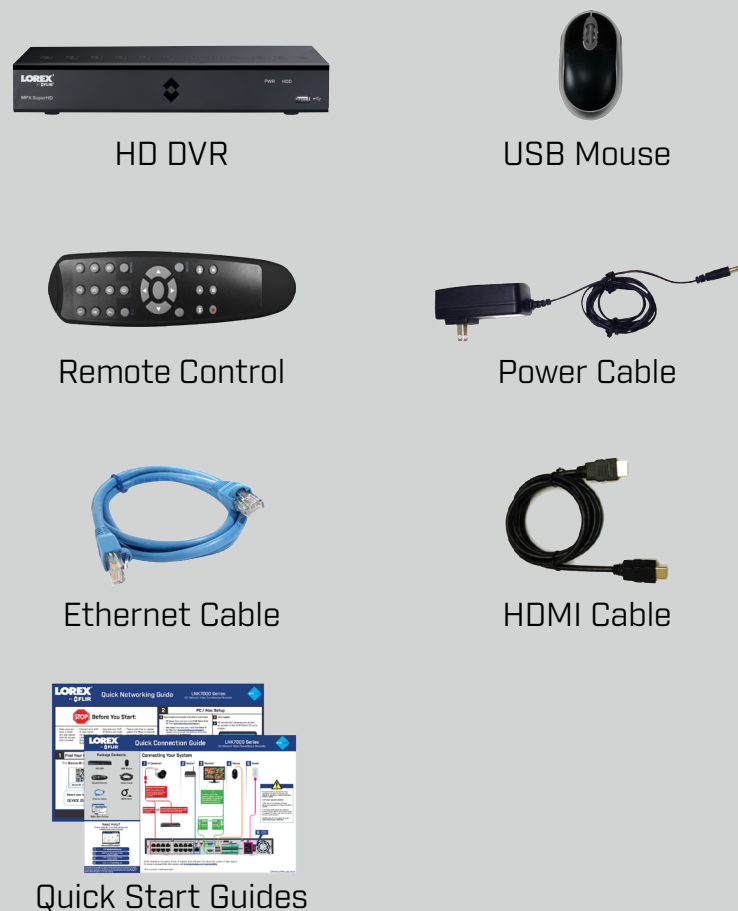
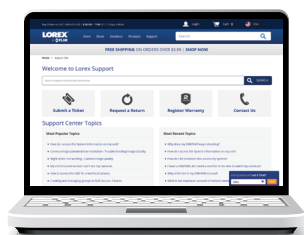


Package Contents:



Need Help?

Visit us online for up-to-date software and complete instruction manuals



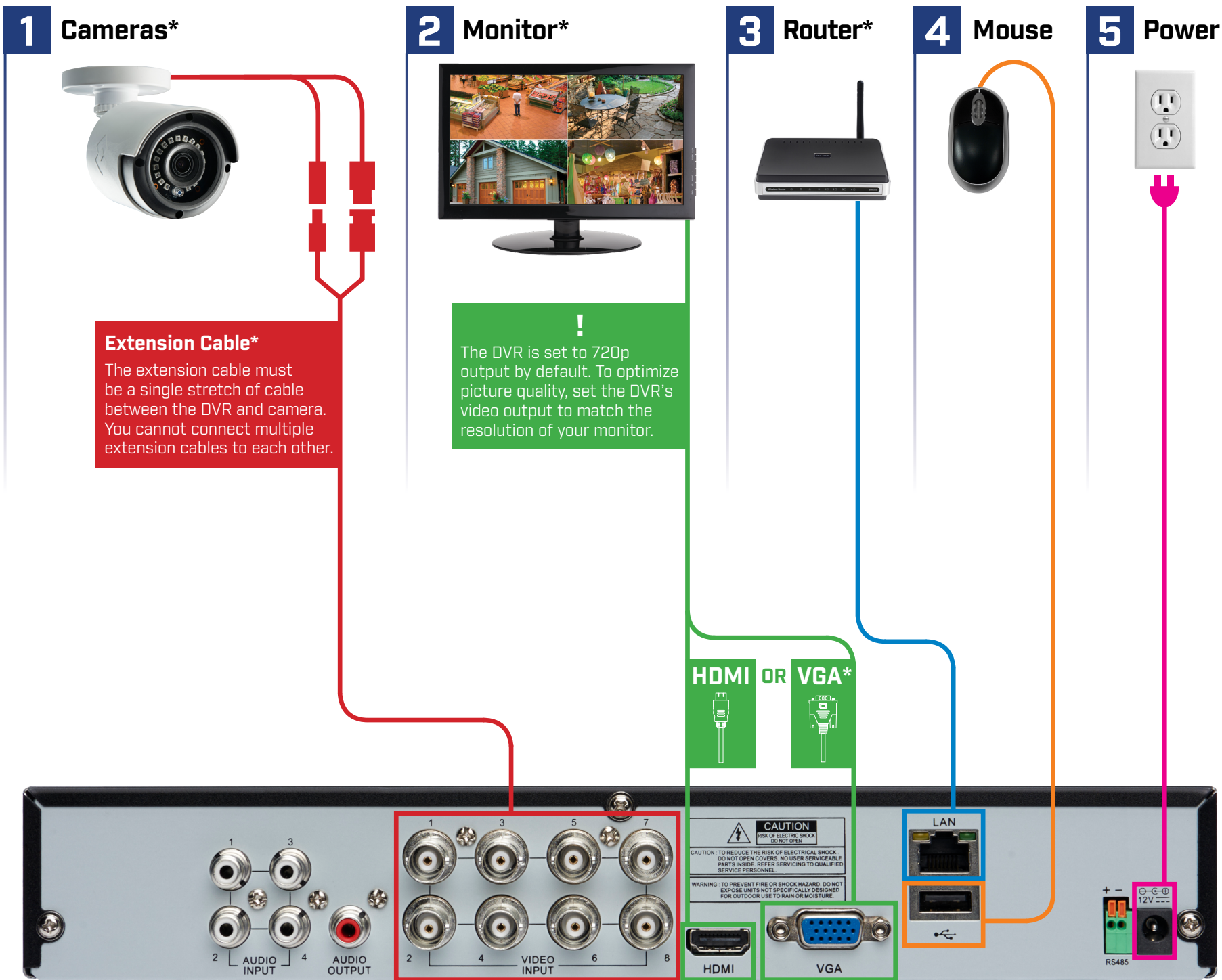
1 Visit lorextechnology.com

2 Search for the model number of your product

3 Click on your product in the search results

4 Click on the **Downloads** tab

Connecting Your System



This system features automatic firmware upgrades for enhanced functionality. **It is required to upgrade your system to the latest firmware version.**

If a firmware upgrade is available:

1. After startup, a notification will appear asking you to upgrade the firmware. Click **OK** to upgrade.
2. The system will download and install the firmware upgrade. Wait for the firmware update to complete. The system may restart during the firmware upgrade process.

DO NOT power off or disconnect the power cable during firmware installation.

8 channel configuration shown. 4/16 channel units will have the respective number of video inputs. For camera compatibility information, visit lorextechnology.com/compatibility

* Not included / sold separately.

Using the Mouse

1. LEFT-CLICK:

- **During split-screen display mode:** Double-click an individual channel to view it in full-screen. Double-click again to return to the split-screen display mode.
- **While navigating menus:** Click to open a menu option.

2. RIGHT-CLICK:

- **During live view:** Right-click anywhere on the screen to open the Quick Menu.
- **While navigating menus:** Right-click to exit menus.

3. SCROLL WHEEL:

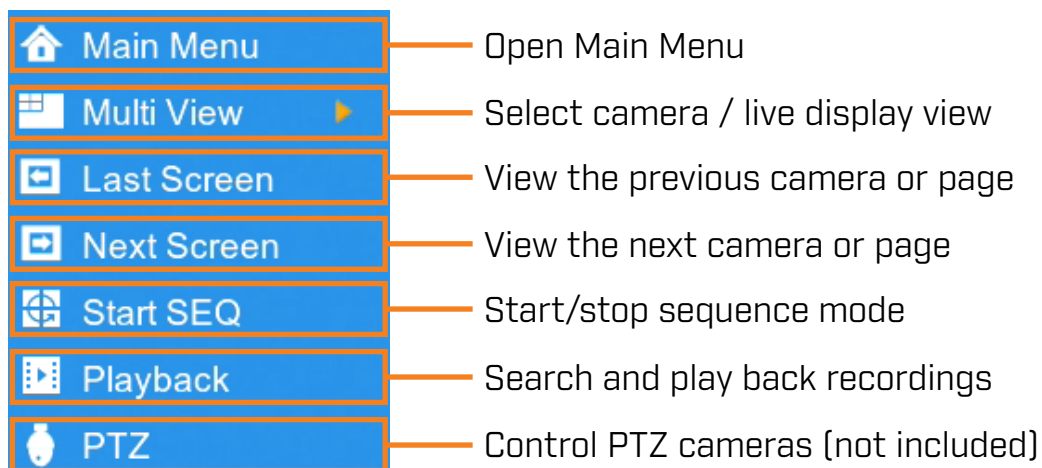
- **While navigating menus:** Scroll to move up / down through the menu content.
- **During live view:** Hover over the volume control wheel and scroll to turn system volume up / down.



NOTE: In live view, hover the mouse cursor over the top of the screen to open the Navigation Bar. Move the mouse cursor away from the top of the screen to close the Navigation Bar.

Using the Quick Menu

Right-click to open the Quick Menu.



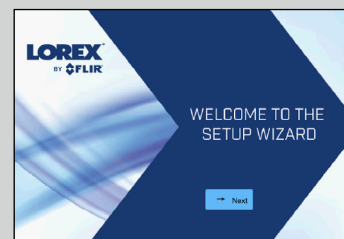
DVR Setup Wizard

When you power up the DVR for the first time, you will be asked to create a new, secure password for the system before using the Setup Wizard:

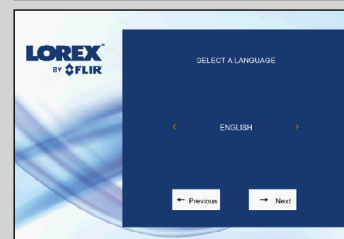
1. Log in using the system user name (default: **admin**) and password (default: **00000000**).
2. Enter a new, secure 8-15 character password, which will be used to access the system from now on.

PASSWORD:

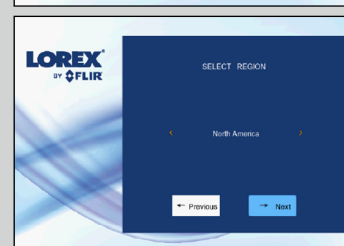
3. Log in using your new, secure password to launch the Setup Wizard. Click **Next** to begin.



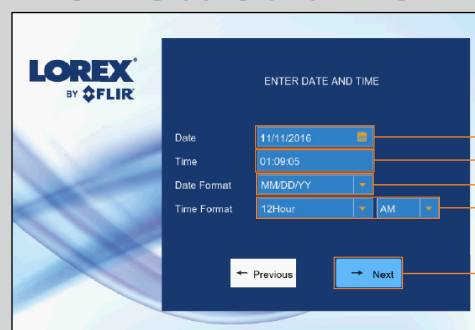
4. Click the arrow keys to select a language for the on-screen display. Click **Next** to confirm.



5. Click the arrow keys to select your region. Click **Next** to confirm.



6. Enter the date and time:

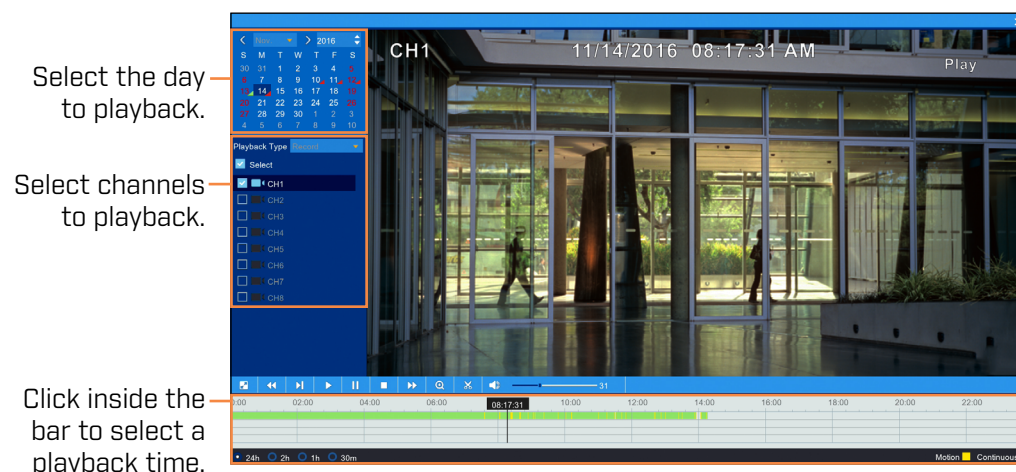


- Click to select the correct date from the calendar.
- Click to enter time using the on-screen keyboard.
- Select a date format from the dropdown.
- Select a time format from the dropdown. For **12Hour** format, select either **AM** or **PM** from the second dropdown.
- Click **Next** to confirm.

7. Review the information you have set for the DVR. To confirm, click **Accept**.

Playback and Search

1. From live view, right-click and then click **Playback**.
2. Log in using the system user name (default: **admin**) and your new, secure password you recorded in the section 'DVR Setup Wizard'.
3. Use the calendar on the left-side of the screen to select the date to playback.
4. Check off the channels you would like to search for recordings from on the left-side of the screen.
5. Click inside the video bar to select the playback time and press **▶** to begin playback.



System Information

To quickly open a window that displays vital system information such as device ID, firmware version, and IP address:

- From live view, click **i** at the bottom of the screen.

OR

- Press **⏮** on the included remote control.

NOTE: If prompted, enter the system user name (default: **admin**) and your new, secure password recorded in the section 'DVR Setup Wizard'.