

Conexis[®] L1 Manual

The Secure, Keyless
Smart Door Lock.

ASSA ABLOY

An ASSA ABLOY Group brand

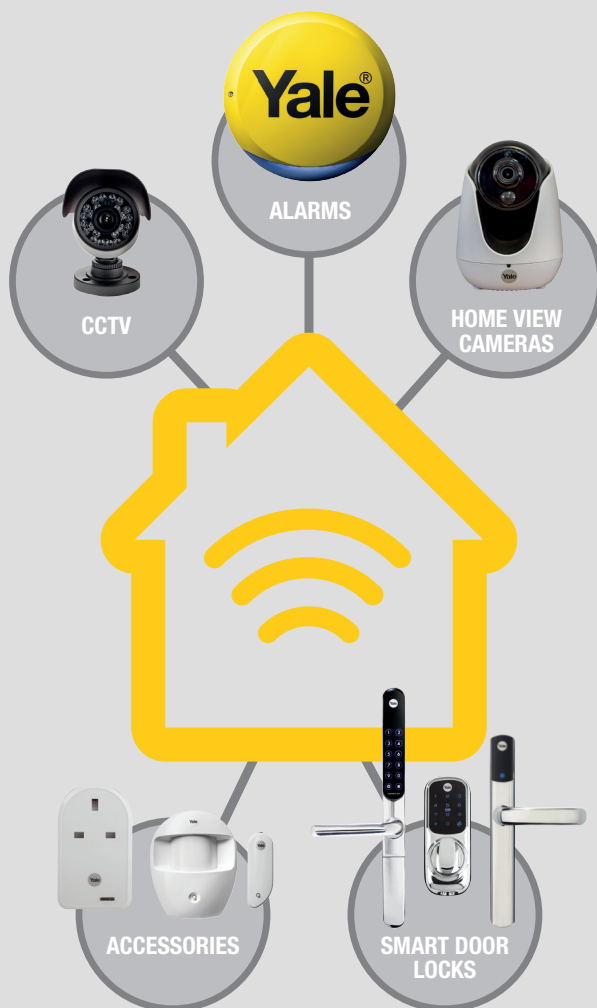
The smarter way to protect your home.

Discover Our Range of Products.

Yale® Connected

Secure, monitor and control your home with a range of smart security devices from Yale. Whether it's a Smart Door Lock, an Alarm or CCTV system, Yale Smart Living products put you in control of your home security.

www.yale.co.uk/smart-living



The smarter way to protect your home.

Introduction.

Thank you for choosing the Yale Conexis® L1 Smart Door Lock. This simple to install product has been designed with the user in mind. Please read this manual completely before using the Yale Conexis® L1 Smart Door Lock.

Contents

Installation	4
Unlock With Cards/Tags	17
Yale Lock App	18
Create Mobile Key Account	19
Adding Cards/Tags Via App	20
Unlock With Yale App	21
Locking The Conexis® L1 Smart Door Lock	22
Battery Indicator	23
Pairing With A Third Party Gateway	24
Factory Reset	25



Search for **Conexis® L1** Installation Video on You Tube

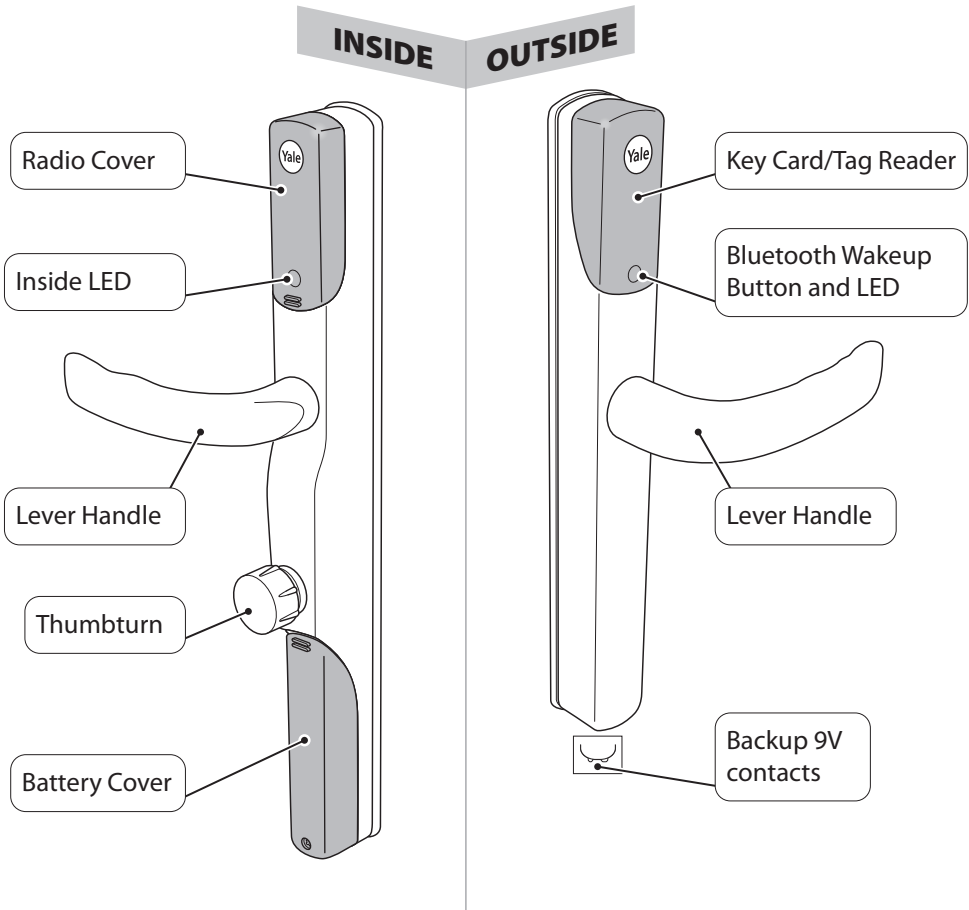
For more information on this product and Yale Smart Living Range visit www.yale.co.uk/smart-living
Consumer Support: info@yale.co.uk
Tel: 01902 364606



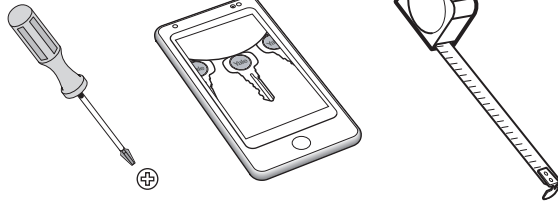
The 2 year guarantee for this product is active from the date of purchase (A copy of this guarantee is available on our website).

Hereby, ASSA ABLOY UK Ltd declares that the Conexis® L1 Smart Door Lock is in compliance with Directive 2014/53/EU. The full text of the EU declaration of conformity is available at the following internet address:
www.yale.co.uk/declaration-of-conformity

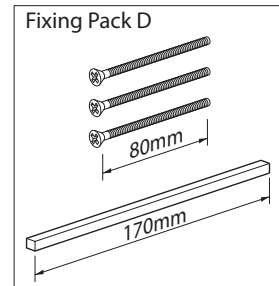
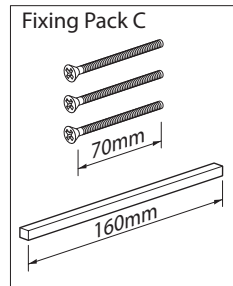
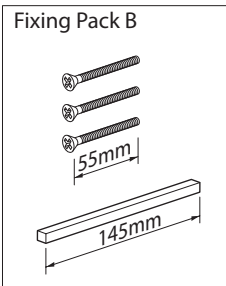
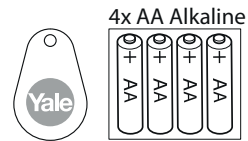
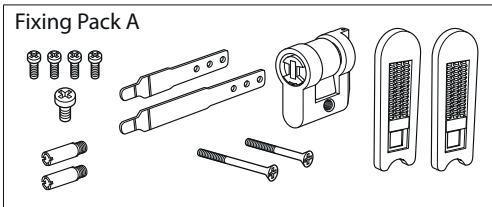
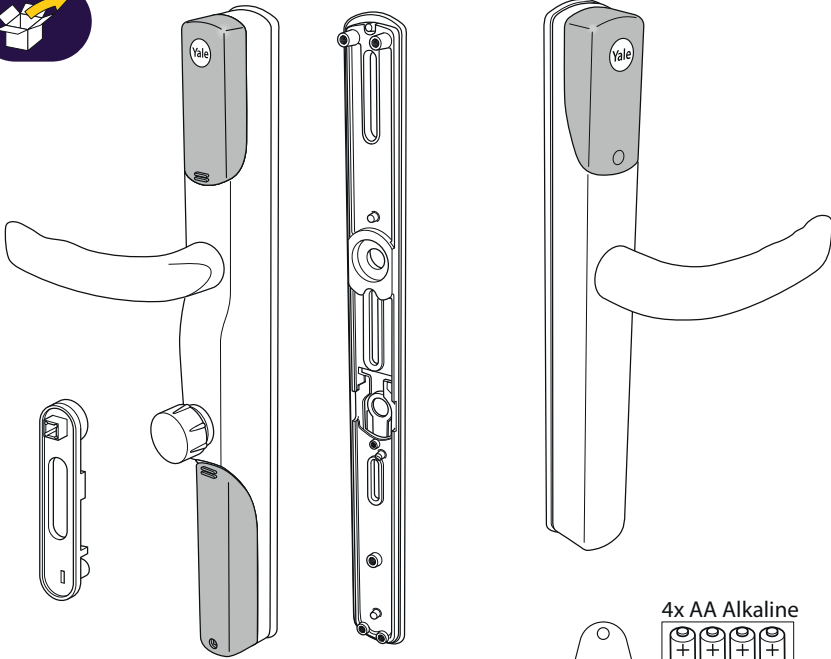
Conexis™ L1 Smart Door Lock.



Tools Required



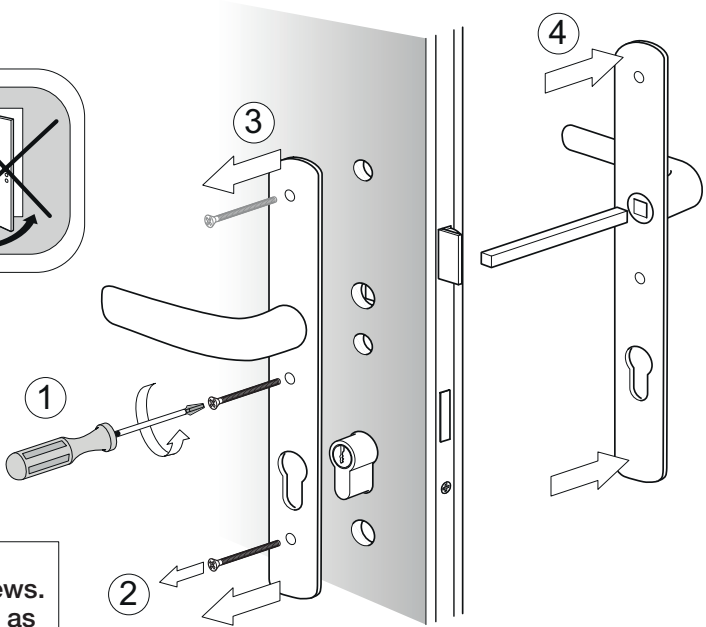
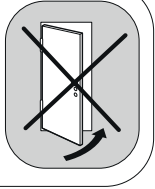
Inside The Box.



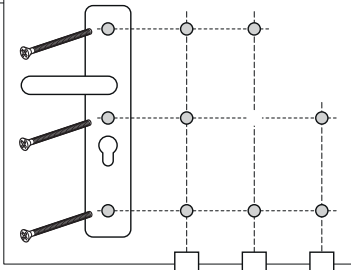
Remove the Current Handle.



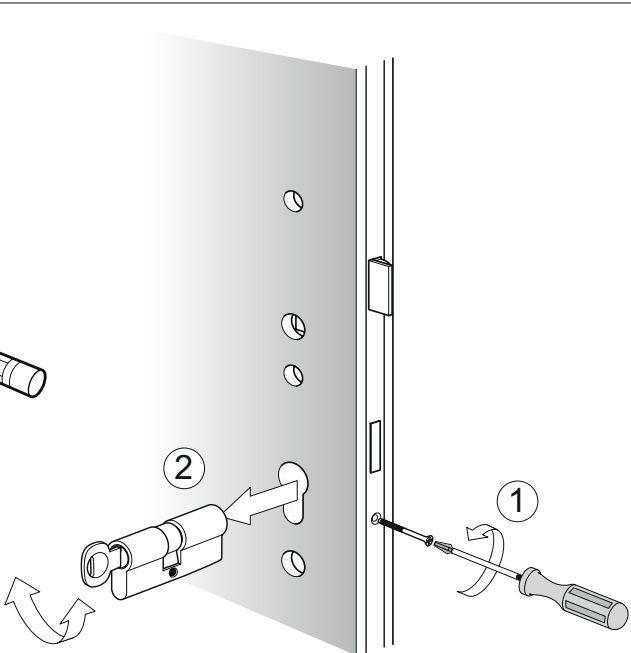
Do not close door until installation is complete.



Please make a note of your current fixing screws. You should have 2 or 3 as below.

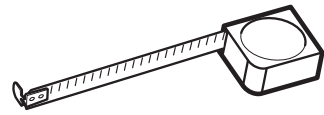


Remove the cylinder



Measuring Your Door.

Please measure the thickness of the door and the distance between the centre of the lock and the inside of the door to select the correct fixing pack and tailbar.

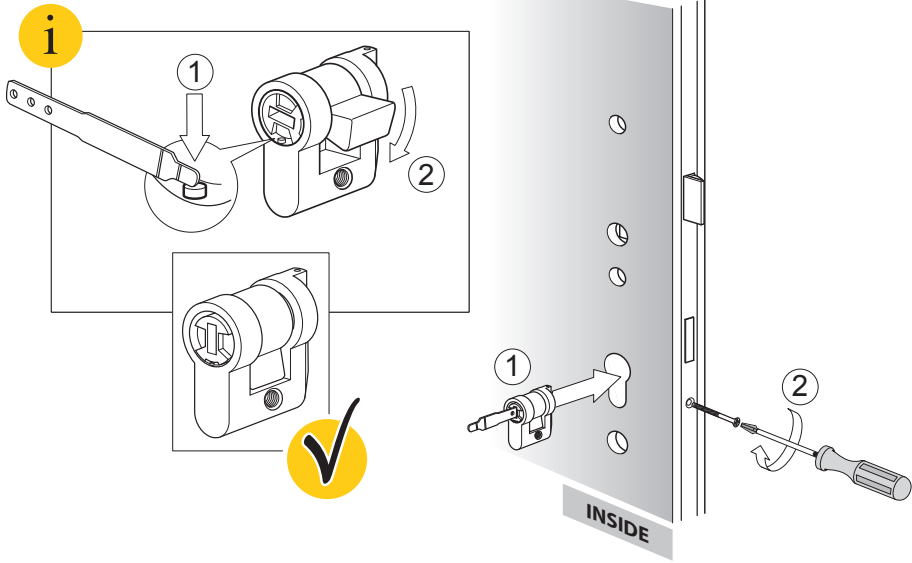


<p>Fixing Pack B</p> <p>55mm</p> <p>145mm</p> <p>Door thickness 44-50mm</p>	<p>Fixing Pack C</p> <p>70mm</p> <p>160mm</p> <p>Door thickness 58-65mm</p>	<p>Fixing Pack D</p> <p>80mm</p> <p>170mm</p> <p>Door thickness 70mm</p>
---	---	--

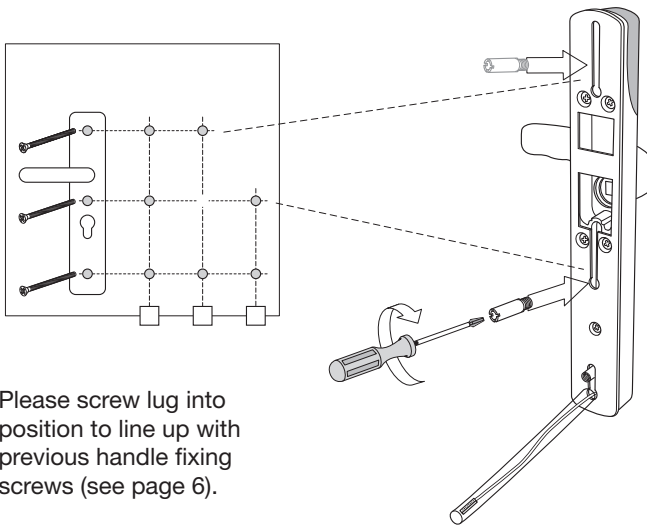
INSIDE

	<p>21mm - 26mm</p>	
	<p>26mm - 31mm</p>	
	<p>31mm - 36mm</p>	
	<p>36mm - 41mm</p>	
	<p>41mm - 46mm</p>	
<p>46mm - 51mm</p>		

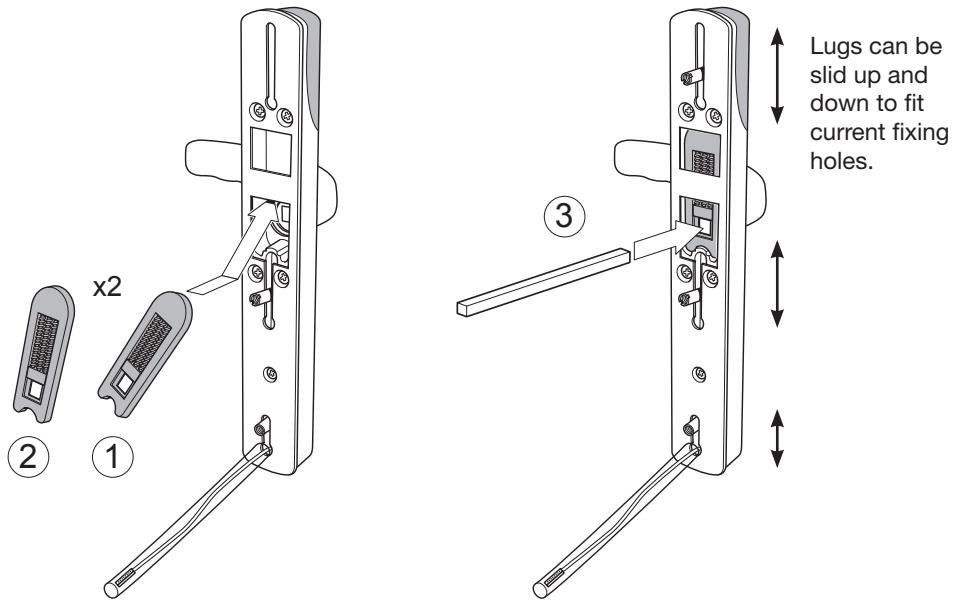
Install lock Actuator.



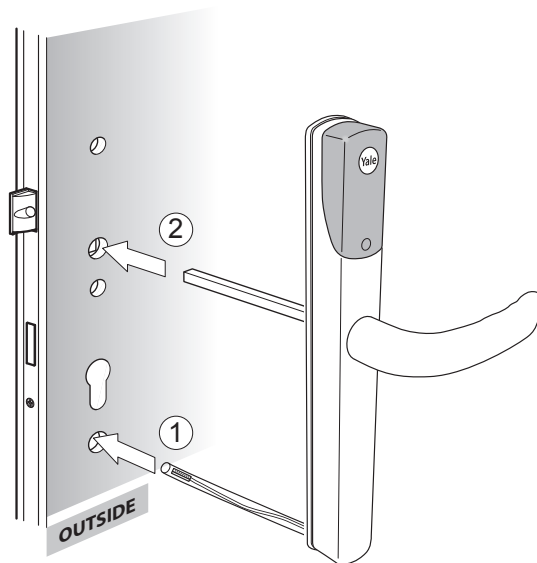
Tip:
After installing actuator make sure it is not tilted in the door.



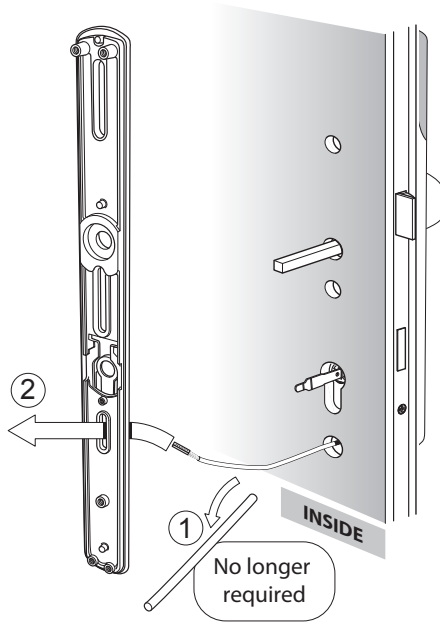
Fit External Handle.



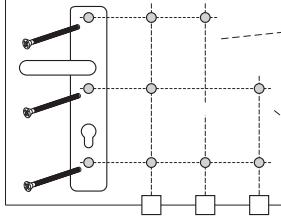
Slide the lug up or down to align with the holes in the door.



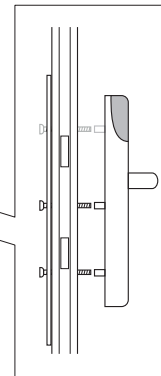
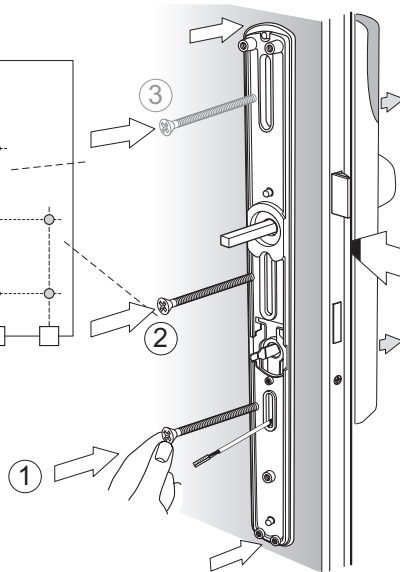
Fit Internal Fixing Plate.



Note



Insert fixing screws to line up with previous handle screws.



Tip: Slightly removing the external handle from outside the door can help line up the fixing screws.

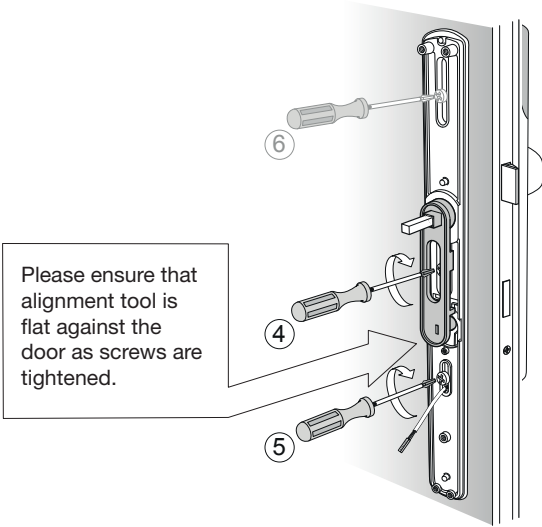
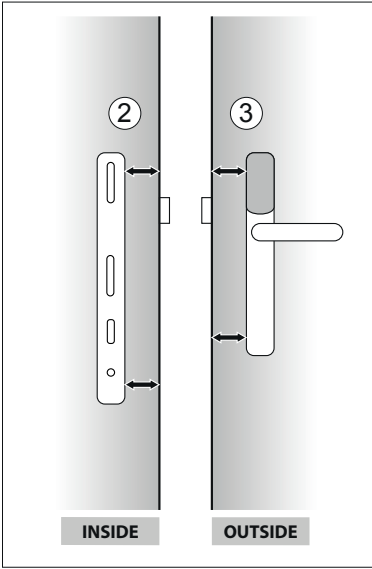
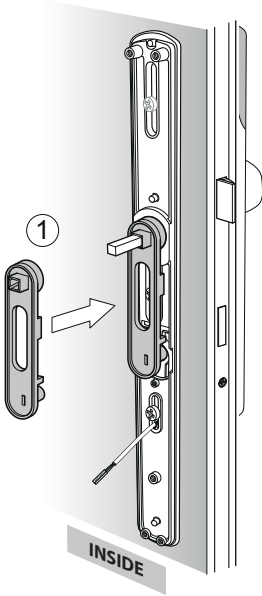


Do not fully tighten.

Unit Alignment.

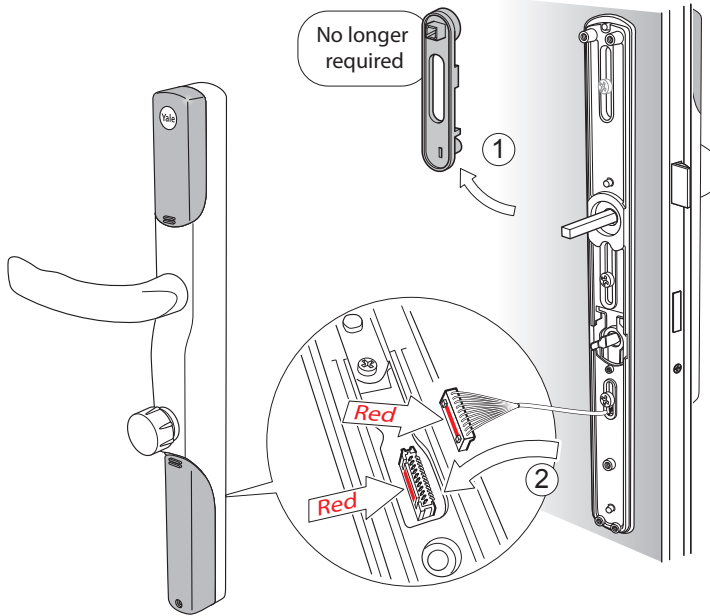


Make sure handle is parallel to door on both sides.

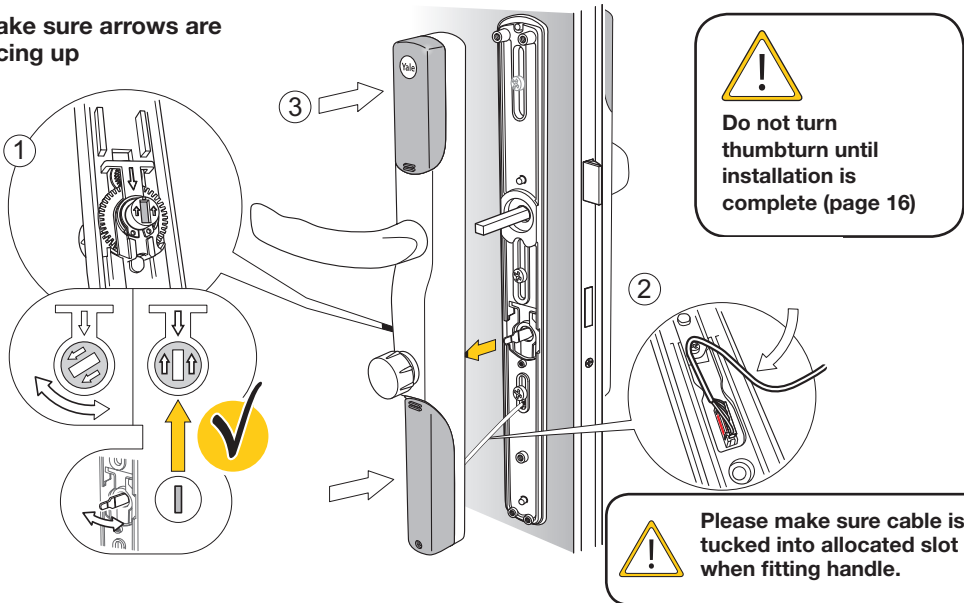


Please ensure that alignment tool is flat against the door as screws are tightened.

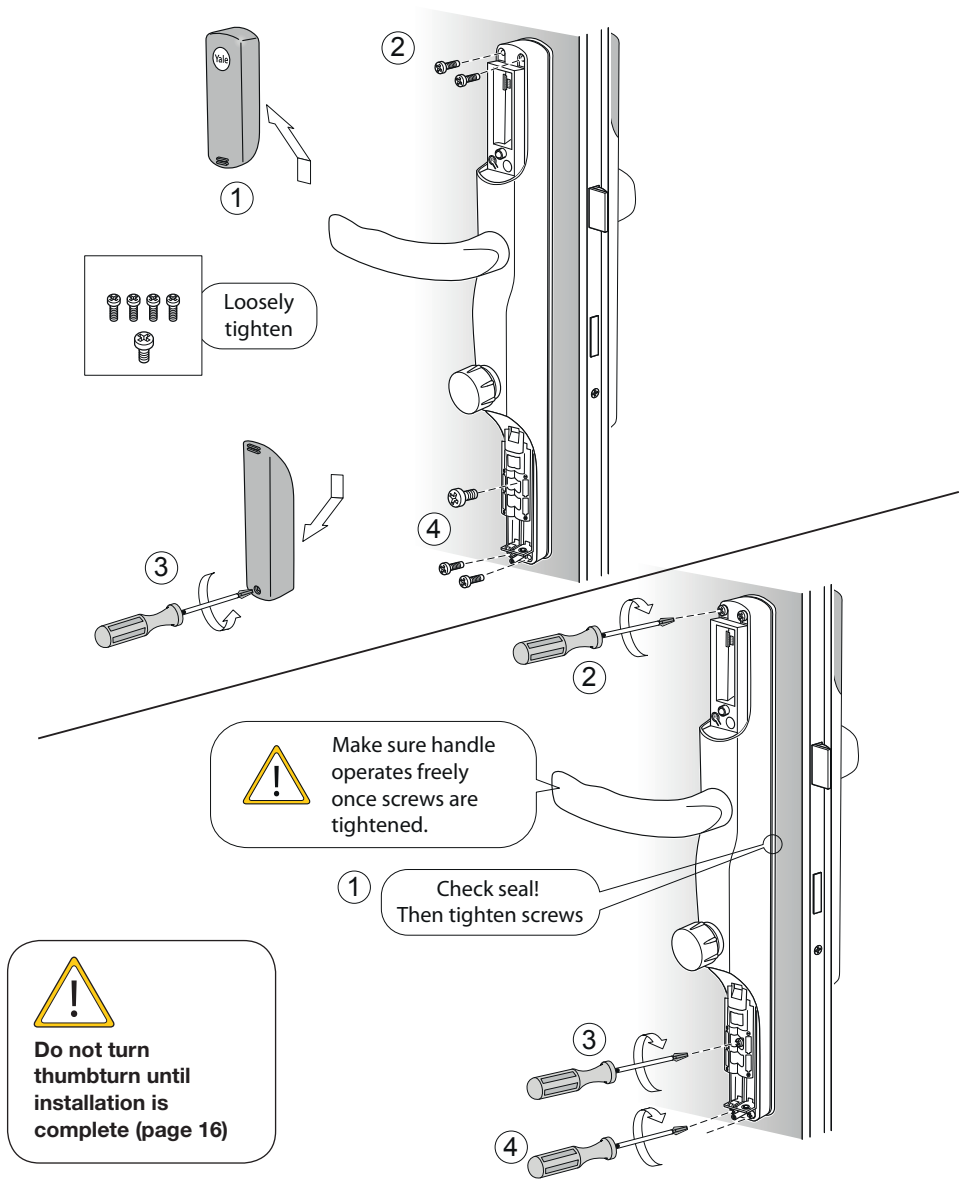
Fitting Internal Handle.



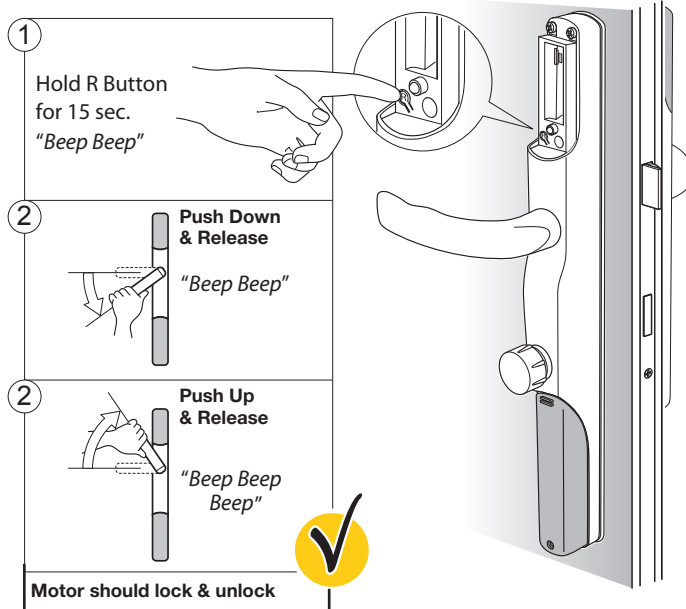
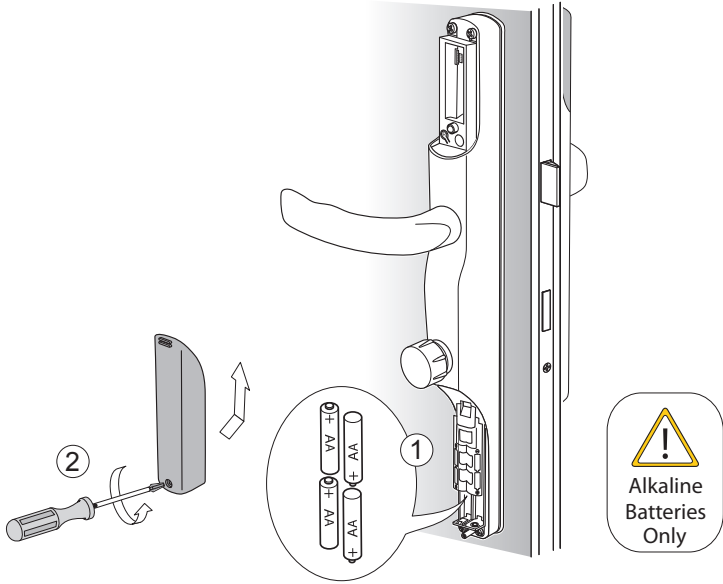
Make sure arrows are facing up



Installation Guide.



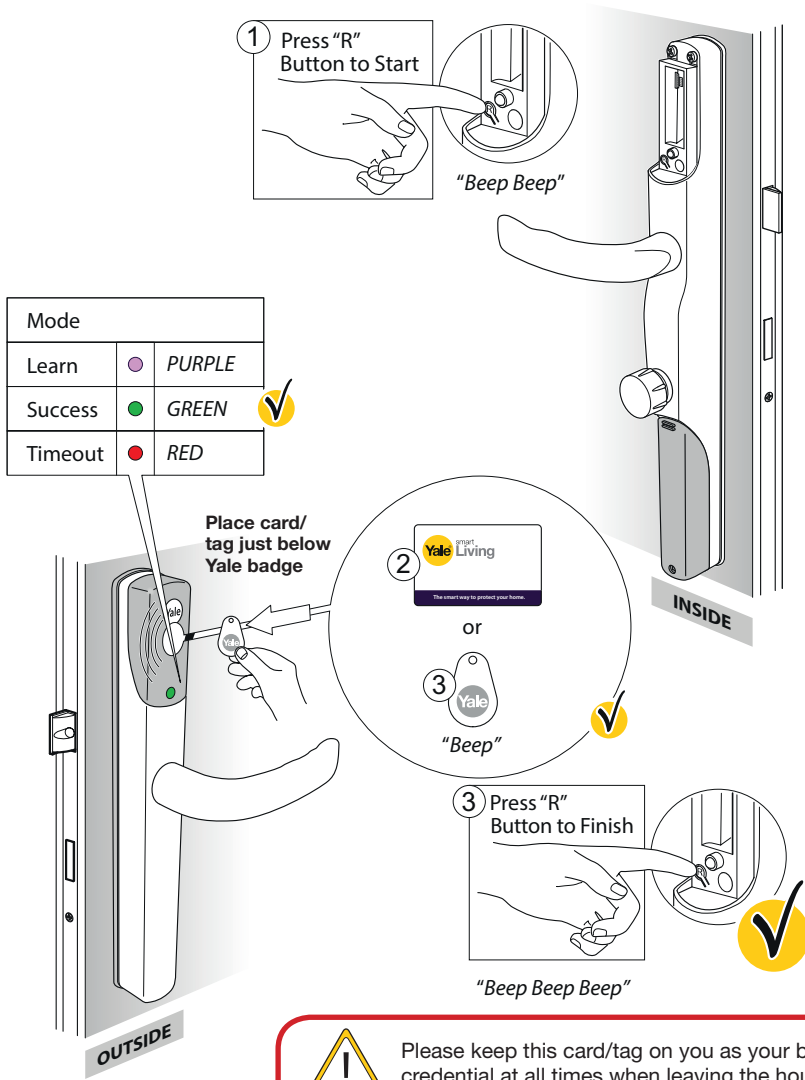
Handing Procedure.



Pairing of Initial Credential.



Initial pairing mode is designed to allow you to pair 1 Card or Tag before you connect a smartphone to your lock. Further cards or tags can be added through the app once installation is complete.



Please keep this card/tag on you as your backup credential at all times when leaving the house.

Installation Checklist.

Before shutting your door in frame, please test the following things...

A While the door is open, lift the lever handle to lock. Make sure the motor operates smoothly.

B Test to make sure the lever handle cannot be pushed down.

C Push the thumbturn in on the inside handle and turn 180 degrees to unlock the door.

D Push the lever handle down and make sure it returns by itself.

E Lift the lever handle to lock again.

F Tap one of the paired Cards/Tags on the outside handle under the Yale logo. Make sure it unlocks and the lever handle can be pushed down.

Your installation is now complete.

If you have issues with any of the above, please contact:

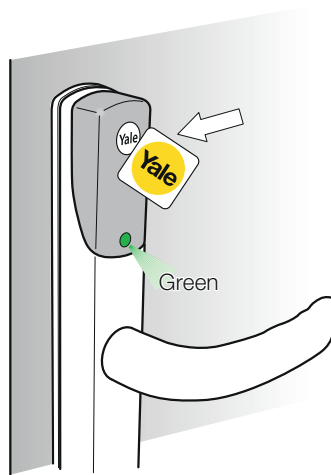
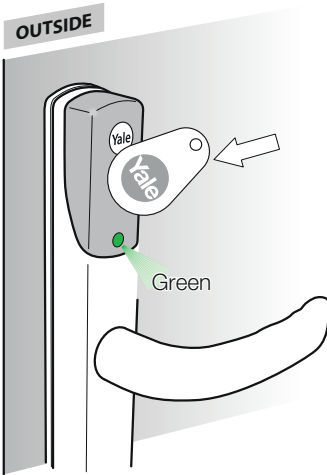
Consumer Support: info@yale.co.uk **Tel:** 01902 364606

Unlock With Cards/Tags.

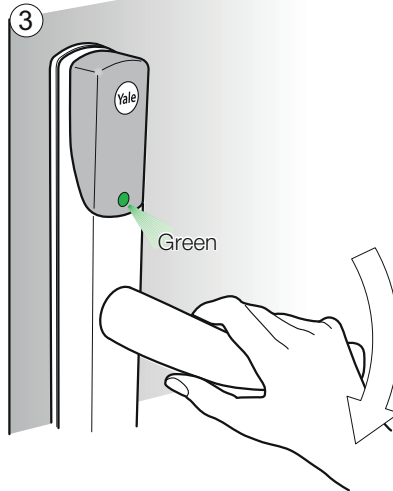
1



2



Place card/tag just below Yale badge



Yale Lock App.

1. Search on app store


2. Download App



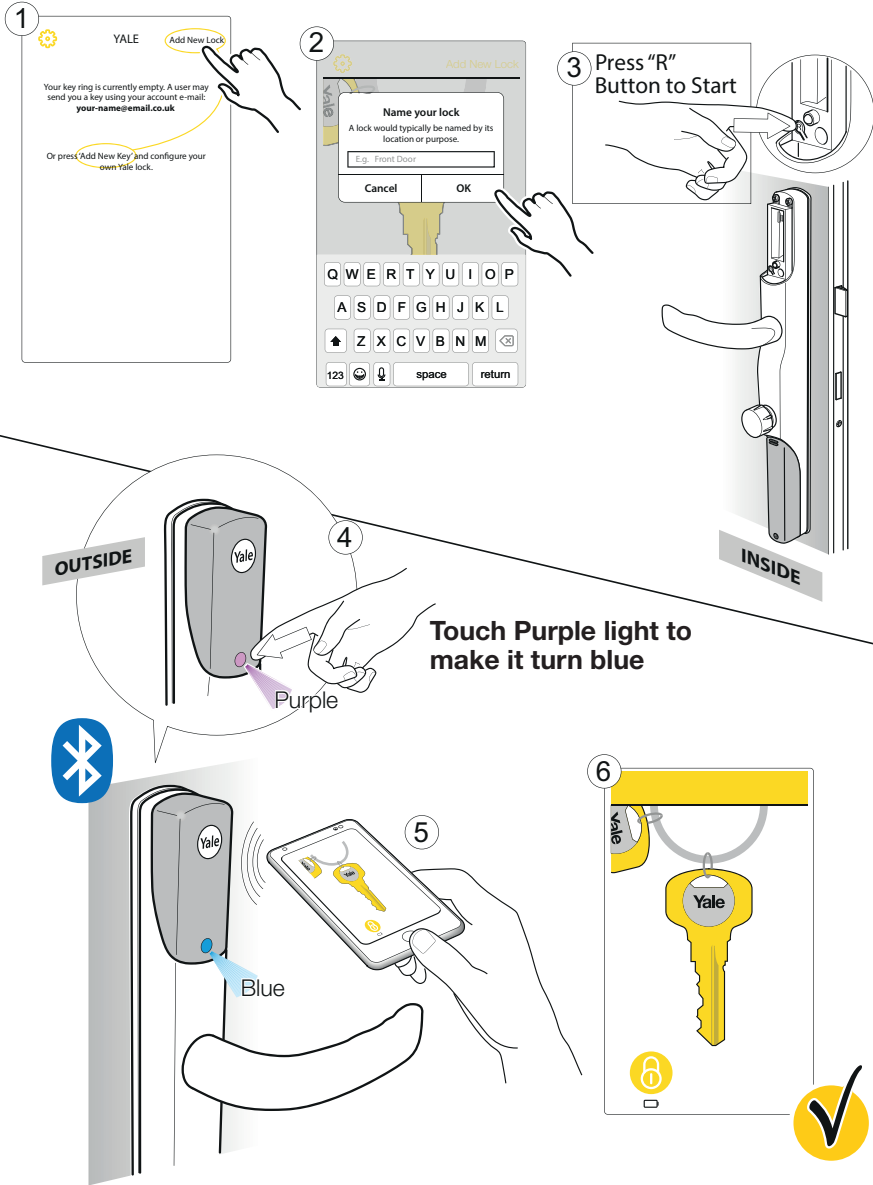
3. Create Account



<p>Yale smart Living Login</p> <p>E-mail <input type="text"/></p> <p>Password <input type="password"/></p> <p>Login</p> <p>Password Reset</p> <p>Create Account</p> <p>Send Feedback</p>	<p>Yale smart Living User Registration</p> <p>First name <input type="text"/></p> <p>Last name <input type="text"/></p> <p>E-mail <input type="text"/></p> <p>Password <input type="password"/></p> <p>Confirm Password <input type="password"/></p> <p>Questions What time of the day were you born? (hh:mm) <input type="text"/></p> <p>Answer <input type="text"/></p>
---	--

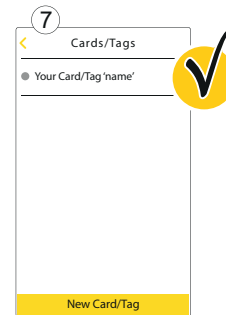
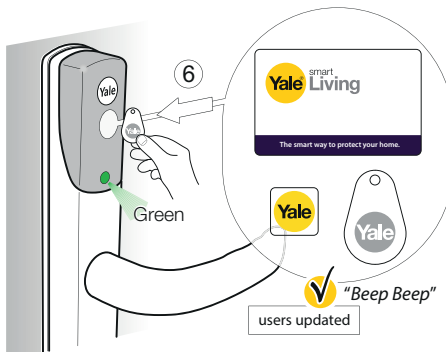
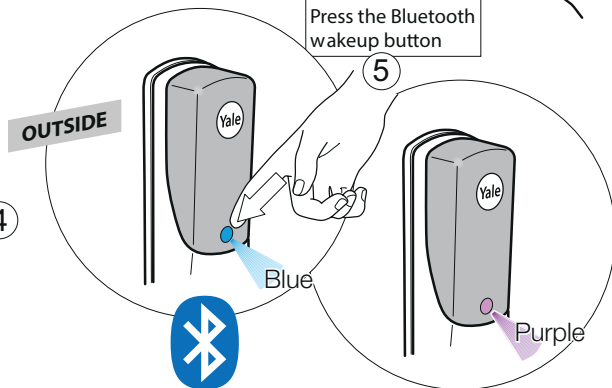
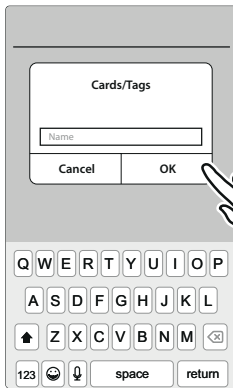
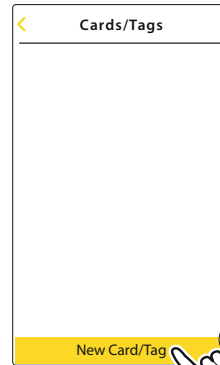
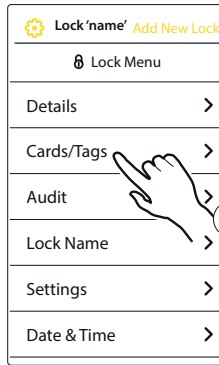
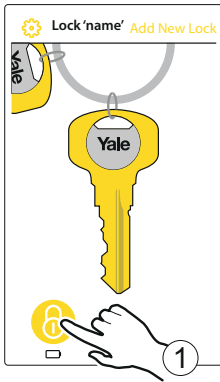


Create Mobile Key.



Only one phone can be paired to lock. This phone can then share the key to other users by tapping key & press manage users.

Adding Additional Cards/Tags Via App.

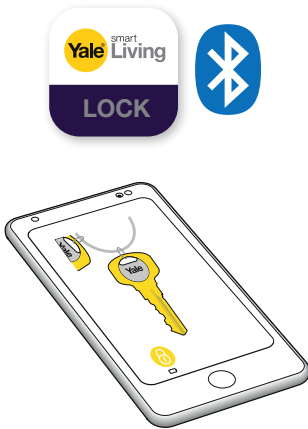


Your initial card/tag will appear as user 1 once a card/tag has been added through the app.

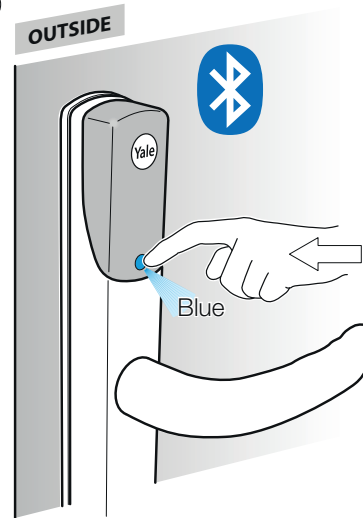
Unlock With Yale App.

Your Smartphone must already have a mobile key for the lock to use this feature. If you're setting up the lock for the first time please follow instructions on page 19, or the lock owner can send you a key.

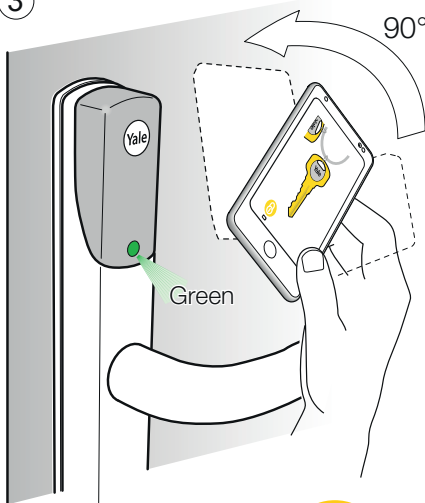
1



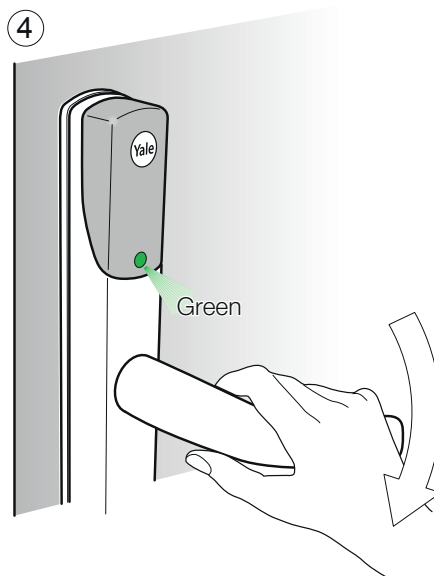
2



3



4



Twist the phone 90° and back up or press activate key button to use the mobile key.

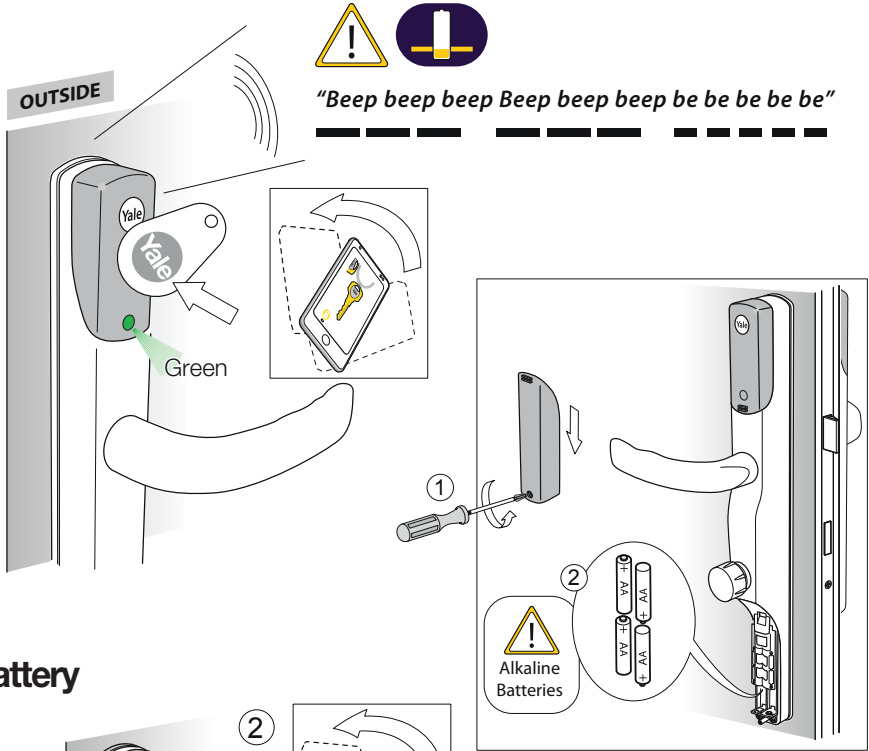


Locking The Conexis® L1 Smart Door Lock.

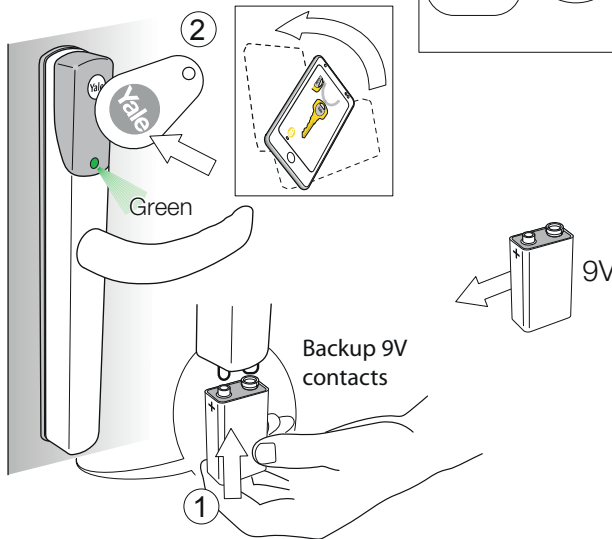


Battery Indicator.

Low Battery

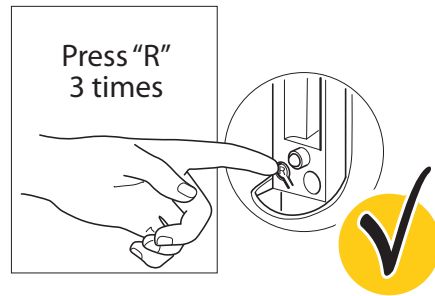
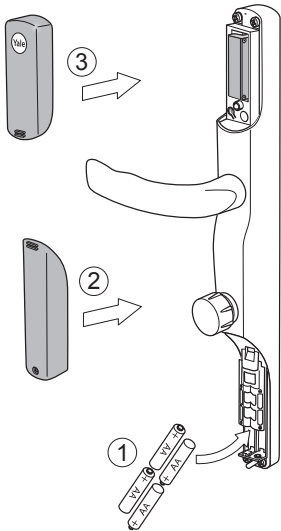
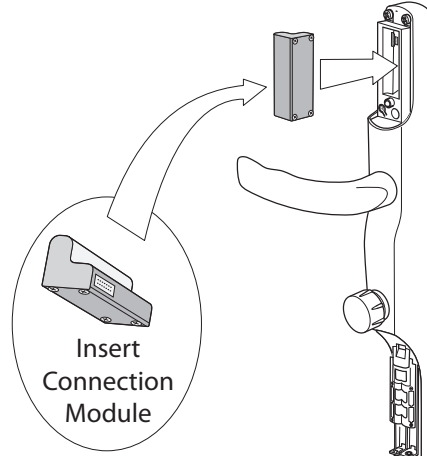
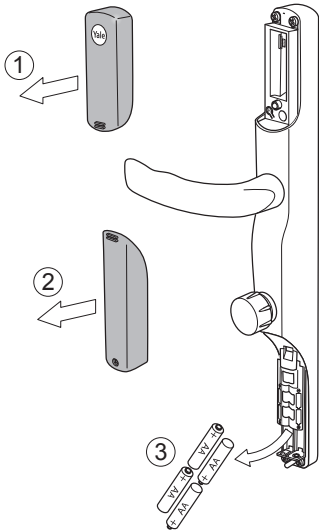


No Battery



Pairing With A Third Party Gateway.

Connecting to a home automation system is a two-way process and may require the compatible home automation system to be configured to look for a new device. Please consult the manual that came with the system for more information.

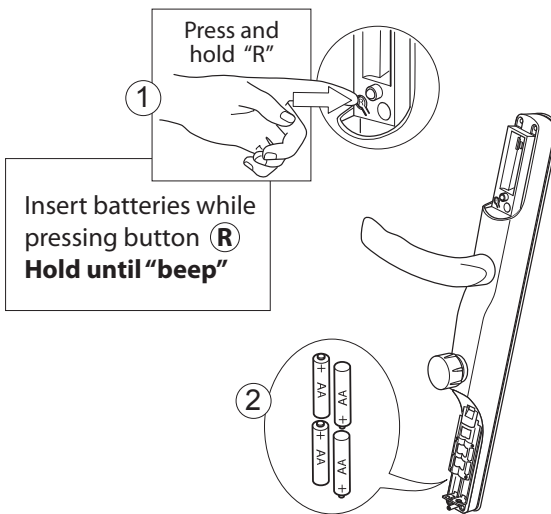
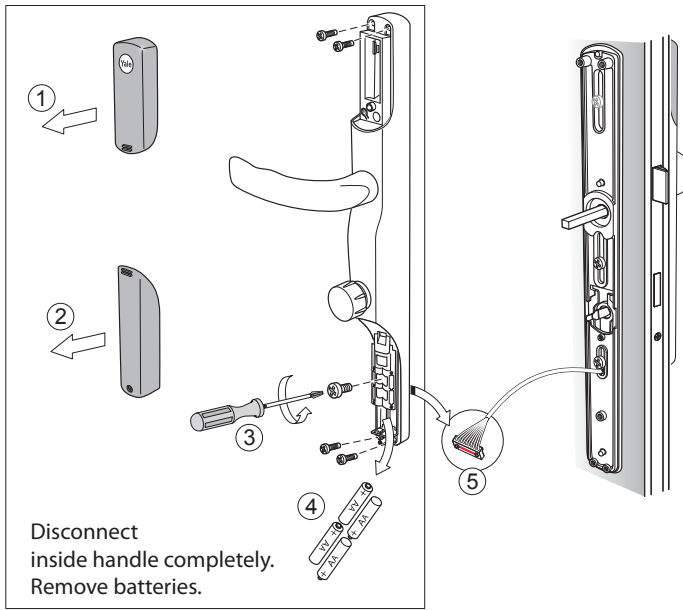


Removing The Lock From A System


The lock may need to be removed from a home automation system before being added to a new system. To do this, please carry out the following:

1. Put the existing system into 'Device Exclusion Mode'
2. Press "R" Button 3 times within 1.5 seconds

Factory Reset.



3



Remove batteries and install following installation instructions.



Notes





THE YALE BRAND, with its unparalleled global reach and range of products, reassures more people in more countries than any other consumer locking solution.

THE ASSA ABLOY GROUP is the world's leading manufacturer and supplier of locking solutions, dedicated to satisfying end-user needs for security, safety and convenience.

 /YaleUK  /YaleSecurity  /YaleSecurityUK

Issue No. 1B

ASSA ABLOY

An ASSA ABLOY Group brand

The smarter way to protect your home.