



**SPEAR &
JACKSON**

ORIGINAL INSTRUCTION MANUAL

800W

Electric Rotovator

TLEG05A



**Important - Please read these instructions
fully before starting assembly**

These instructions contain important information that will help you get the best from your rotovator, ensuring it is assembled correctly and safely. If you need help or have damaged or missing parts, call the Customer Helpline on 0345 605 2067

**AFTER SALES SUPPORT
0345 605 2067**

SPEAR & JACKSON SINCE 1760

For more than 250 years gardeners have enjoyed high quality performance and great results using Spear & Jackson tools.

Our garden power tools combine continuous innovation and the latest in manufacturing technologies with a proud heritage.

Each product is carefully designed with performance, comfort and durability firmly in mind, which has earned Spear & Jackson an enviable reputation as a maker of tools to trust.

3 YEARS GUARANTEE

As a testament to the quality of our products, we offer a 3 year manufacturers warranty and a comprehensive after sales service.

The warranty covers manufacturing faults, however in the event that the item has been deliberately damaged, used in a commercial environment or disassembled then the warranty will be null and void.

Please retain proof of purchase.

7 DAYS A WEEK TECHNICAL SUPPORT

We want you to get the best out of your products. Our easy-to-read instruction manual guides you with best practice use and maintenance tips. Please call **0345 605 2067** for technical support, we can solve around 80% of questions directly over the phone.

We hope you enjoy your product and we look forward to any feedback, as this allows us to develop even better products for the future.

CONTENTS

Safety Information	04
Description of symbols	04
General safety	05
Prepare.....	05
Work area safety.....	06
Personal safety	07
Electrical safety.....	08
Power tool use and care.....	08
Operate	09
Maintenance and storage safety	11
Service.....	12
Intended use.....	12
Box Content / Parts	13
Assemble	14
Unpacking.....	14
Assemble the frame	14
Assembling the handles	15
Clamping the cable with cable clip.....	15
Prepare	17
Connecting the extension cord to a suitable socket.....	17
Switch on/off.....	17
Operate	18
Maintenance and repair	19
General.....	19
Cleaning the device.....	20
Storage	21
Transportation	21
Recycling and disposal	21
Technical Data	22
Troubleshooting	24
Warranty	25

SAFETY INFORMATION

Please read these instructions fully before operating or maintaining your machine

DESCRIPTION OF SYMBOLS

The following warning symbols appear throughout this manual and indicate the appropriate safety measures you should take when operating and maintaining the rotovator.



Read instruction handbook before operating this machine.



WARNING!

This is a warning symbol. This symbol is used throughout the user guide whenever there is a risk of personal injury. Ensure that these warnings are read and understood at all times.



Wear eye protection.



Wear ear protection.



Wear protection gloves.



Wear proper safety shoes.



WARNING! Remove plug from the mains immediately if the cable is damaged or cut.



Keep bystanders away.



Do not expose and operate the tool in rain.



SWITCH OFF! Remove plug from mains before cleaning or maintenance.



Danger from damaged mains cable. Keep mains cables away from blades!



Danger of injury from rotating parts. The blades will continue to rotate after the tool has been switched off. Wait for them to stop moving.



Guaranteed sound power level value in 93dB.



Double insulation.



Waste electrical products should not be disposed of with household waste. Please recycle where facilities exist. Check your Local Authority or retailer for recycling advice.



The product complies with the applicable European directives and an evaluation method of conformity for these directives was done.

SAFETY INFORMATION

Please read these instructions fully before operating or maintaining your machine

GENERAL SAFETY

IMPORTANT!

Read all instructions. Failure to follow all instructions listed below may result in electric shock, fire and/or serious injury. The term “power tool” in all warnings listed below refers to your mains operated power tool.

- Read the instruction carefully. Be familiar with the controls and the correct use of the appliance. Read and understand the operator’s manual and observe the warnings and instruction labels affixed to the appliance.
- Never allow children or people unfamiliar with these instructions to use the electric rotovator. Local regulations can restrict the age of the operator.
- Never use the tool while people, especially children, or pets are nearby. Keep

in mind that the operator or user is responsible for accidents or hazards occurring to other people or their property.

- This appliance is not intended for use by people (including children) with reduced physical, sensory or mental capabilities, or lack of experience and knowledge, unless they have been given supervision or instruction concerning use of the appliance by a person responsible for their safety.
- Do not touch the rotating blades until they are stopped.

PREPARE

- **THIS MACHINE CAN CAUSE SERIOUS INJURIES.** Read the instruction carefully for the correct handling, preparation, maintenance,

SAFETY INFORMATION

Please read these instructions fully before operating or maintaining your machine

starting and stopping of the appliance. Be familiar with the controls and the proper use of the appliance. Read and understand the operator's manual and observe the warnings and instruction labels affixed to the appliance.

- Users. Never allow children or people unfamiliar with these instructions to use the appliance. Local regulations may restrict the age of operator. Never operate the tool under the influence of alcohol, medication or drugs.
- Use appropriate tool. This device is only intended for break up topsoil in private house and hobby gardens. Do not force small tools or attachments to do the job of a heavy duty tool.

- Keep work areas clean. Check the terrain on which will be using the tool, and remove stones, sticks, wires or other foreign objects that may be caught up and spun off.
- Consider work area environment. Do not expose your tool to high humidity or rain. Do not use your tool in damp and wet conditions. Keep the work area well lit.
- Keep all bystanders, children, and pets at least 50 feet away. The operator or user is responsible for accidents or hazards occurring to other people or the property.
- Do not operate power tools in explosive atmospheres, such as in the presence of flammable liquids, gases or dust. Power tools create sparks which may ignite the dust or fumes.

WORK AREA SAFETY

SAFETY INFORMATION

Please read these instructions fully before operating or maintaining your machine

PERSONAL SAFETY

- Use personal protective equipment (PPE). Always wear eye protection. Protective equipment such as dust mask, non-skid safety shoes, hard hat, or hearing protection used for appropriate conditions will reduce personal injuries.
- Dress appropriately. Do not wear loose clothing or jewellery, as these can be caught in moving parts. Preferably wear non-slip footwear when working outdoors. Wear protective hair covering to keep long hair out of the way.
- Stay alert, watch what you are doing and use common sense when operating a power tool. Do not use a power tool while you are tired or under the influence of drugs, alcohol or medication. A moment of inattention while operating power tools may result in serious personal injury.
- Prevent unintentional starting. Ensure the switch is in the off-position before connecting to power source and/or battery pack, picking up or carrying the tool. Carrying power tools with your finger on the switch or energising power tools that have the switch on invites accidents.
- Keep all parts of the body away from the blades. Make sure the switch is off when clearing jammed material. A moment of inattention while operating the electric rotovator may result in serious personal injury.
- Do not overreach. Keep proper footing and balance at all times. This enables better control of the power tool in unexpected situations.

SAFETY INFORMATION

Please read these instructions fully before operating or maintaining your machine

ELECTRICAL SAFETY

- Power tool plugs must match the outlet. Never modify the plug in any way. Do not use any adapter plugs with earthed (grounded) power tools. Unmodified plugs and matching outlets will reduce risk of electric shock.
- Avoid body contact with earthed or grounded surfaces, such as pipes, radiators, ranges and refrigerators. There is an increased risk of electric shock if your body is earthed or grounded.
- Do not expose power tools to rain or wet conditions. Water entering a power tool will increase the risk of electric shock.
- Do not abuse the cord. Never use the cord for carrying, pulling or unplugging the power tool. Keep cord away from heat, oil, sharp edges or

moving parts. Damaged or entangled cords increase the risk of electric shock.

- When operating a power tool outdoors, use an extension cord suitable for outdoor use. Use of a cord suitable for outdoor use reduces the risk of electric shock.

POWER TOOL USE AND CARE

- Do not force the power tool. Use the correct power tool for your application. The correct power tool will do the job better and safer at the rate for which it was designed.
- Do not use the power tool if the switch does not turn it on and off. Any power tool that cannot be controlled with the switch is dangerous and must be repaired.
- Disconnect the plug from the power source and/ or the battery pack from

SAFETY INFORMATION

Please read these instructions fully before operating or maintaining your machine

the power tool before making any adjustments, changing accessories, or storing power tools. Such preventive safety measures reduce the risk of starting the power tool accidentally.

- Store idle power tools out of the reach of children and do not allow persons unfamiliar with the power tool or these instructions to operate the power tool. Power tools are dangerous in the hands of untrained users.
- Maintain power tools. Check for misalignment or binding of moving parts, breakage of parts and any other condition that may affect the power tool's operation. If damaged, have the power tool repaired before use. Many accidents are caused by poorly maintained power tools.
- Keep cutting tools sharp and clean. Properly maintained cutting tools

with sharp cutting edges are less likely to bind and are easier to control.

- Use the power tool, accessories and tool bits etc. in accordance with these instructions, taking into account the working conditions and the work to be performed. Use of the power tool for operations different from those intended could result in a hazardous situation.

OPERATE

- Be certain the parts are fully tightened before operating the tool. Check it periodically for tightness during use to avoid serious injury.
- Risk of cut. Do not touch or try to stop the rotating parts when they are moving.
- Disconnect the plug.

SAFETY INFORMATION

Please read these instructions fully before operating or maintaining your machine

Disconnect plug from the tool when not in use or when servicing or cleaning.

- Check for damaged parts. Before further use, carefully check the tool for damage. Check for alignment of moving parts, binding of moving parts, breakage of parts, mounting and any other condition that may affect its operation. Do not use the tool if any parts are damaged or defective. Have any damaged or defective parts repaired or replaced by an authorized service agent. Never attempt any repairs yourself.
- Grip the tool securely. Always hold the tool securely in both hands while working with it.
- Keep handle dry, clean and free from oil and grease. Slippery handles do not allow for safe handling and control of the tool in unexpected situations.
- Keep cable away from cutting area. During operation the cable may be hidden in shrubs and can be accidentally cut by the blade.
- Do not overload the tool. Only work in the performance range stated. Do not use tools that do not have sufficient power for heavy jobs. Do not use the tool for any use other than that intended by the manufacturer.
- If there is any danger of slipping on sloped ground, have a second person secure the tool with a rod or cable. The second person should stand up the slope at a safe distance from the tool.
- Avoid damage to the tool. Do not apply extra weight and do not drag the tool over hard surfaces such as tiles or steps.
- Do not use the tool on excessively steep slopes. Make sure that you are

SAFETY INFORMATION

Please read these instructions fully before operating or maintaining your machine

standing firmly when using the tool, especially on slopes. If working on a slope, work along the slope, not upwards or downwards. Be particularly careful when changing direction on the slope.

- Do not use the power tool if the switch does not turn it on and off. Any power tool that cannot be controlled with the switch is dangerous and must be repaired.
- Disconnect the plug from the power source before making any adjustments, changing accessories, or storing power tools. Such preventive safety measures reduce the risk of starting the power tool accidentally.
- The use of a residual current device (R.C.D) with a tripping current of not more than 30mA is recommended.

MAINTENANCE AND STORAGE

- Maintain tools with care. Keep tools clean and in good condition for better and safer performance. Follow the instructions for maintenance and changing accessories. Keep handles and switches dry, clean and free from oil and grease.
- Be careful in handling the tool. Keep the blades sharp and clean to improve its working safety and effectiveness.
- Store idle power tools out of the reach of children and do not allow persons unfamiliar with the power tool or these instructions to operate the power tool. Power tools are dangerous in the hands of untrained users.

SAFETY INFORMATION

Please read these instructions fully before operating or maintaining your machine

SERVICE

- Have your tool repaired by an authorized service agent. This tool is manufactured in accordance with the relevant safety regulations. To avoid danger, electrical appliances must only be repaired by qualified technicians.

INTENDED USE

This product designated for small gardens and flower beds, this device effectively loosens and turns over new soil. It may also be used to mix coarse soil with fertilizer, peat, and compost. This product may not be used to till extremely dry or wet soil.

The use of this product in rain or wet conditions is prohibited.

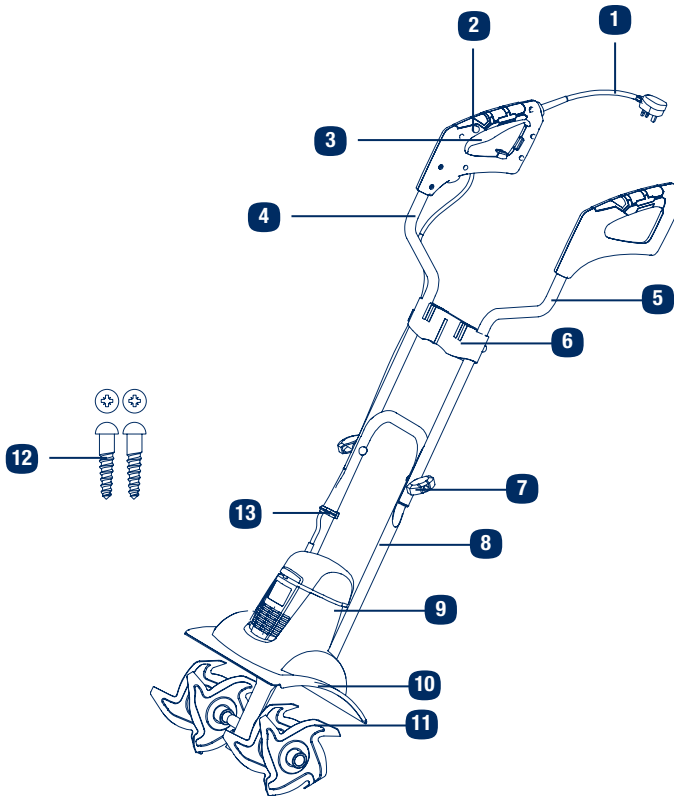
This product is intended for

private domestic use only. It is not intended for any commercial trade use. It must not be used for any purposes other than those described.

BOX CONTENT

PARTS

- | | |
|--------------------------------------|----------------------------|
| 1 Cable and plug | 8 Lower handle |
| 2 Lock button | 9 Motor housing |
| 3 Switch trigger | 10 Safety guard |
| 4 Right handle | 11 Blade 4pcs |
| 5 Left handle | 12 Screws 2pcs |
| 6 Frame | 13 Cable clip, 1 pc |
| 7 Fixing knobs and bolts 2pcs | |



If there are any parts missing, please call the customer helpline on 0345 605 2067

ASSEMBLE

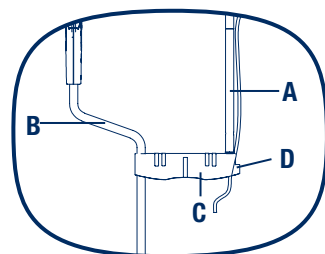
1 Unpacking

Warning! Wear proper protective gloves.

- i. Unpack all parts and lay them on a flat, stable surface.
- ii. Remove all packing materials and shipping devices if applicable. Box should be kept for duration of warranty.
- iii. Make sure the delivery contents are complete and free of any damage. If you find that parts are missing or show damage do not use the product but contact your dealer. Using an incomplete or damaged product represents a hazard to people and property.
- iv. Ensure that you have all the accessories and tools needed for assembly and operation. This also includes suitable personal protective equipment.

2 Assemble the frame

Slide the right (A) and left-hand handles (B) into the frame (C). Secure the frame to the left and right-hand handles with the included screws.

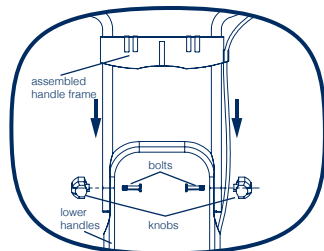


NOTE: Use a Phillips-head screwdriver. Aligning the holes may be difficult. We recommend fastening one hand grip at a time to the frame.

ASSEMBLE

3 Assembling the handles

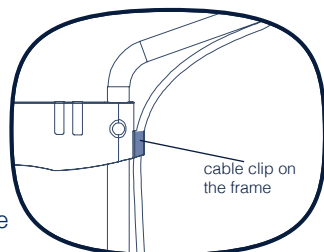
Align the assembled handle frame with the lower handle. Use the nuts and knobs to fix the assembled handle frame and lower handles firmly together.



NOTE: Make sure that the control handle is on the side of the cable holder of the connectors.

4 Clamping the cable with cable clip

Clamp the cable in the cable clip on the frame.



Secure the power cable to the lower handle by using the cable clips



WARNING! Before switching the tool on, make sure that the tool is not touching any other objects and hold it firmly in both hands.

Always keep a firm grip on the tool with both hands and watch your feet. The blades may cause an accident. Be careful while moving backwards danger of tripping!
Do not touch the gearbox, as it may become hot during operation – danger of burns!

PREPARE



WARNING! Read all of the instructions of this manual before attempting to connection the power supply for your tool.



WARNING! If the insulation on a power cable or extension lead is found to be cut or damaged, do not touch it! Disconnect the power supply immediately and have the damaged cable replaced by authorized service agent.



WARNING! If operating the appliance in a damp location is unavoidable, use a residual current device(RCD) protected supply. Use of an RCD reduces the risk of electric shock.



WARNING! Use only extension cords suitable for outdoor use, preferably with a high visibility cable colour.

Always unwind all extension cables fully, coiled cables can overheat and reduce the efficiency of your product.

NOTE! For extension cables up to 15metres, use a wire cross section of 1.5mm². For extension cables over 15 meters but less than 40 meters, use a wire cross section of 2.5 mm².



WARNING! This product is designed to operate on 230-240 VAC 50Hz.The voltage and current must comply with the information on the ratings label!

NOTE! This electric rotovator is fitted with a non-rewireable plug. If it is necessary to change the fuse in the plug, the fuse cover becomes lost or damaged, the plug must not be used until a suitable replacement is obtained.



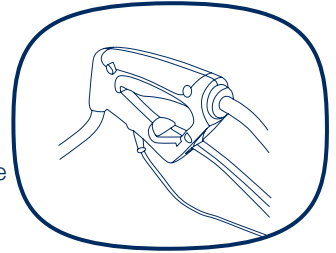
WARNING! A 13amp fuse must be fitted.

WARNING! Make sure the on/off switch is in its off position.

PREPARE

1. Connecting the extension cord to a suitable socket

Double the extension cord, about a foot from the end. Push the loop through the hole on the rear safe guard and hook the loop over the cord restrainer(A). Gently pull on the cord to ensure that it is firmly attached at the handle. Connect the cable to a proper socket.



WARNING! Always wear safety gloves when doing any work on the electric rotavator. Always unplug the power cord from the power source before doing any work on the electric rotavator.

2. Switch on/off



WARNING! Rotating blades may cause serious injury. The blades will continue to turn for a few seconds after the tool has been switched OFF. Do not touch the rotating blades. Contact with hot components (i.e. motor housing, gear box, etc.) on the machine may

Switching on

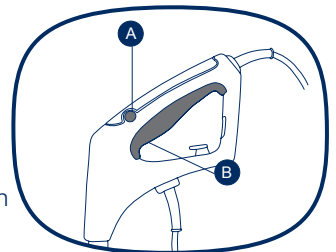
1. Press the lock button (A).
2. Hold the switch trigger (B) and release the switch button (A).

Switching off

Release the switch trigger (B).

Note! For your safety, this tool is equipped with a double switch system. This system prevents starting the tool inadvertently. You must press the switch button (A) firstly, and then hold the switch trigger (B).

Never attempt to hold the switch trigger without pressing the lock button first!



OPERATE



WARNING! Do not touch the gearbox, as it may become hot during operation.



WARNING! Always keep a firm grip on the tool with both hands and watch your feet. The blades may cause an accident. Be careful while moving backwards –danger of tripping!



WARNING! To avoid damage to the tool:

Never lift or drag the tool with the motor running.

Lift the tool while moving it over hard surfaces such as tiles or steps.

NOTE: Switch the tool off after working with it and for transport; disconnect from the mains and wait for the blades to stop moving.

- i. Walk the tool through the soil at normal pace and in as straight a line as possible.
- ii. Always work away from the mains socket. Make sure that the cable is kept well away from the working area.
- iii. **OVERLOAD Protection:** The motor will cut out immediately if overloaded. The tool cannot be used until it has completely cooled down again. Turn off the machine. When the machine is completely cool down, restart it again.

MAINTENANCE AND REPAIR



WARNING! Always switch the product off and let the product cool down before performing inspection, maintenance and cleaning work!

General

- Clean the product with a slightly damp cloth and pH-neutral soap. Use a brush for areas that are hard to reach.
- In particular clean the air vents after every use with a cloth and brush.
- Remove stubborn dirt with high pressure air (max. 3 bar).
- Check for worn or damaged parts. Replace worn parts as necessary or contact an authorised service centre for repair before using the product again.
- Regularly check for obvious defects such as loose, dislodged or damaged cutting devices, loose fixings and worn or damaged components.
- Check that safety guard are undamaged and correctly fitted. Carry out necessary maintenance or repairs before using the product.



WARNING! Wear safety gloves when working on the cutting blades and close to it!

IMPORTANT! The tool is fitted with four tine wheels (blades) that can easily be changed in pairs. Both of the tine wheel pairs can be fitted on the left or right, as required. Purchase the blades from authorised service center.

WARNING! Make sure that the blades (d) are set to their proper turning direction. The arrows on the gearbox and blades should point the same way.

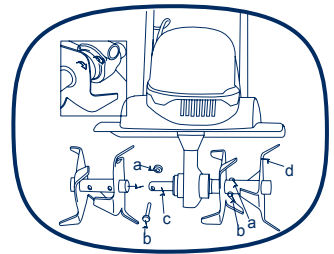
MAINTENANCE



WARNING! Unexpected tine movement may cause personal injury. Before servicing, repairing, or inspecting the unit, turn the motor OFF and disconnect the power. Wait for the tines to completely stop rotating before conducting inspection, cleaning, or maintenance. Before and after each use, check the product and accessories (or attachments) for wear and damage. When necessary, only use identical replacement parts that are approved by the manufacturer.

WARNING! Contact with hot components (e.g. motor housing, gear box, etc.) on the machine may cause burns. Allow the machine to cool off before handling.

- Unscrew the hex bolt (b) and the self-locking nut (a) on the tine wheel pair (d).
- Slide the tine-wheel pair off the driveshaft (c).
- Clean the driveshaft with biological oil.
- Slide the new blades onto the driveshaft with the holes on the axles aligned to the holes on the driveshaft (c).
- Slide the hex bolt (b) through the hole and tighten on the self-locking nut(a).



Cleaning the device

IMPORTANT!

- Wear protective gloves when cleaning or maintaining the machine.
- Do not use cleaning fluids or solvents or spray the machine down with water(especially water under pressure) when cleaning the machine.

NOTE: After each use, follow these steps to properly clean the unit:

- Remove soil, dirt, and foliage stuck in the tines, drive shaft, tool surface, and vents with a brush or dry cloth.
- Spray or rub biodegradable oil onto the tines.
- Clean soiled grips with a damp cloth. Always inspect the machine for damaged and worn parts after each use. Check that safety features (i.e. labels, guards, etc.) are in place. Check that nuts, bolts, and screws are tight.

MAINTENANCE

Storage

- Clean the product (see maintenance).
- Store the product and its accessories in a dark, dry, frost-free, well-ventilated place.
- Always store the product in a place that is inaccessible to children. The ideal storage temperature is between 10 and 30°C.
- We recommend using the original package for storage or covering the product with a suitable cloth or enclosure to protect it against dust.

Transportation

- Switch the product off and disconnect it from power supply before transporting it anywhere.
- Always carry the product on its gripping surfaces.
- Protect the product from any heavy impact or strong vibrations which may occur during transportation in vehicles.
- Secure the product to prevent it from slipping or falling over.

Recycling and disposal

- The product comes in a package that protects it against damage during shipping. Keep the packaging until you are sure that all parts have been delivered and the product is functioning properly. Recycle the packaging afterwards.
- Old products are potentially recyclable and do not, therefore, belong in your household rubbish. You are requested to assist us and our contribution to saving resources and protecting the environment by handing in this product at an equipped collection centre (if there is one available).



TECHNICAL DATA

Model	TLEG05A
Motor Voltage	230-240V ~,50Hz
Input power	800W
No load speed	390 /min
Working width	360mm
Max working depth	180mm
Net Weight	8.8kg

Part number	Accessories
HT500-01	Blade guard
TLEG05A-22	Blade
TLEG05A-18	Frame
TLEG05A-1516	Fixing knobs and bolts

TECHNICAL DATA

Measured sound pressure level 80.1 dB(A), K=3 dB(A)

Measured sound power level 89.26 dB(A), K=2.72dB(A)

Guaranteed sound power level 93 dB(A)

Vibration values

Hand arm vibration a_{h} : 3.909 m/s²

Uncertainty K: 1.5 m/s²

The sound values have been determined according to noise test code given in EN 709, using the basic standards EN ISO 11094 and EN ISO 3744

The sound intensity level for the operator may exceed 80dB(A) and ear protection measures are necessary.

The declared vibration value has been measured in accordance with a standard test method (according to EN 709) and may be used for comparing one product with another. The declared vibration value may also be used in a preliminary assessment of exposure.



WARNING! Depending on the actual use of the product the vibration values can differ from the declared total! Adopt proper measures to protect yourself against vibration exposures! Take the whole work process including times the product is running under no load or switched off into consideration!

Proper measures include among others regular maintenance and care of the product and cutting attachments, keeping hands warm, periodical breaks and proper planning of work processes!

TROUBLESHOOTING

Suspected malfunctions are often due to issues that the user can fix themselves. Therefore, check the product using this section. In most cases the problem can be solved quickly.



WARNING! Only perform the steps described within these instructions! All further inspection, maintenance and repair work must be performed by an authorised service centre or a similarly qualified specialist if you cannot solve the problem yourself!

Gloves and appropriate protective clothing must be worn when performing these instructions.

Fault Possible	Cause	Solution
Product does not start	<ol style="list-style-type: none">1. Not connected to power supply2. Power connection is loosen3. Other electrical defect to the product	<ol style="list-style-type: none">1. Connect to power supply2. Connect the power supply and tool well3. Check by a specialist electrician
Product does not reach full power	<ol style="list-style-type: none">1. Extension cord not suitable for operation with this product has too low voltage2. Power source (e.g. generator)3. Air vents are blocked	<ol style="list-style-type: none">1. Use a proper extension cord2. Connect to another power source3. Clean the air vents
Unsatisfying result	<ol style="list-style-type: none">1. Cutting blades worn	<ol style="list-style-type: none">1. Have a specialist to replace it

WARRANTY

If your device develops a fault, please don't hesitate to contact our customer service department on 0345 605 2067, we can solve 80% of problems via the phone.

1. These warranty terms cover additional warranty rights and do not affect your statutory warranty rights. All our products are covered by a 3 year manufacturer warranty.
2. Claims must be accompanied by proof of purchase. This must be in the form of a sales receipt or bank statement and must show that the product has been purchased within the warranty period as described under point 1, from the retailer that it was originally bought from. Please keep your receipt safe or staple it to the back of this manual for future reference.
3. Our warranty covers problems caused by material or manufacturing defects, and will result in the repair of these defects or replacement of the device with a like for like or similar article.
4. Our devices have not been designed for commercial, trade or industrial applications, any signs of use of the equipment in these application or equivalent activities, invalidates the warranty.
5. The following are also excluded from our warranty:
 - A. Faults due to accidents, customer misuse or unauthorized repairs
 - B. Consumable Parts such as cutting line, plant protectors, handles, knobs, extension cable and other accessories that are compatible with the product.
 - C. Failure due to lack of routine maintenance.
 - D. Failure as a result of not using the equipment in accordance with the manual and safety instructions
 - E. The adjustment of cables, drive gears, or blades

Warranty claims should be submitted before the end of the warranty period, see point 1, but a paid service exists for repairs commissioned after this period. The original warranty period remains applicable to the device even if repairs are carried out or parts are replaced. In such cases, the work performed or parts fitted will not result in an extension of the warranty period, and no new warranty will become active for the work performed or parts fitted.

If you have any problems or questions concerning your garden power tool, please contact our after sales service at 0345 605 2067.