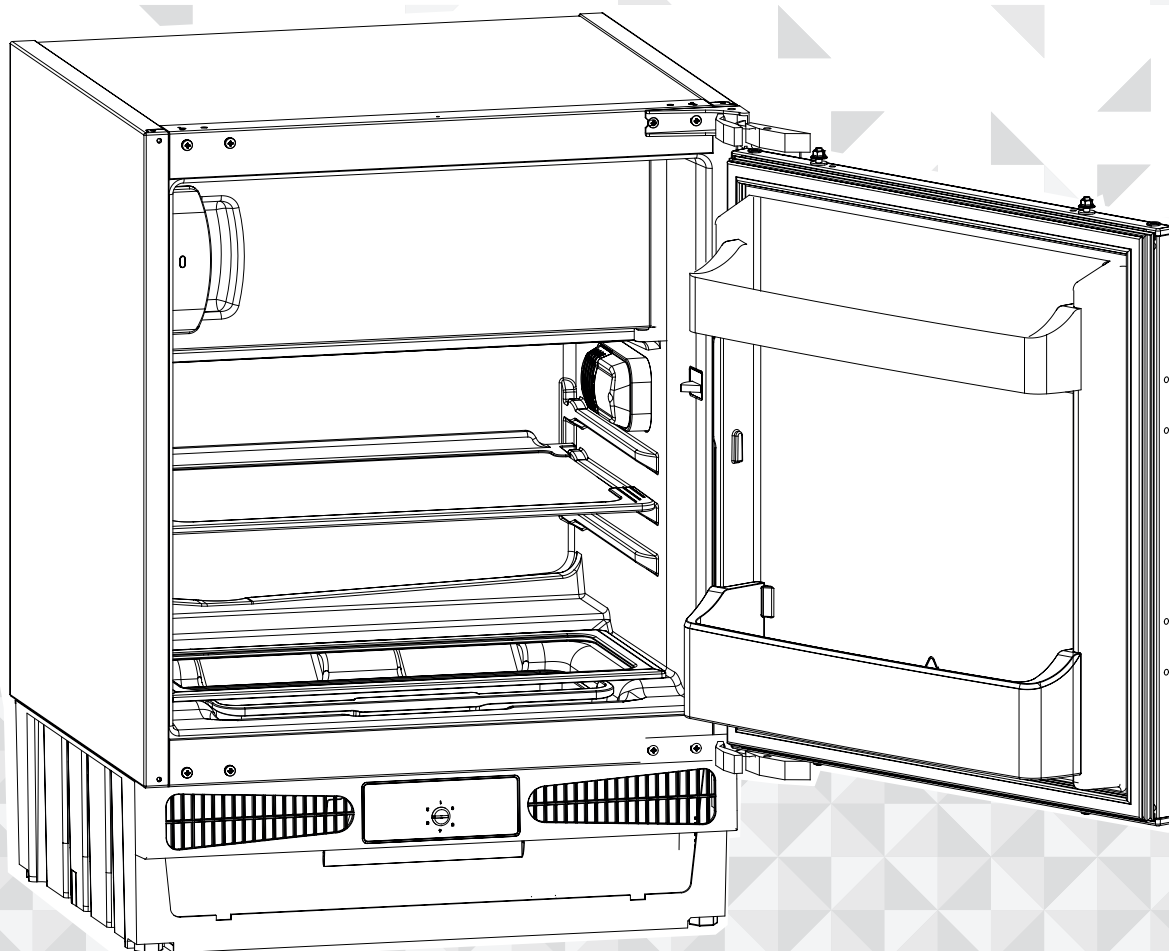


# BUSH

## Instruction manual

Built-In Refrigerator

BUCFR6082





You'll soon be enjoying your new Built-In Refrigerator.

It all begins here, with your instructions. Don't worry, there's nothing too technical coming up. Just simple, step-by-step guidance to get you up and running quickly. Sound good? Then let's get started.

## Help and Guidance

We're here to help you get the most from your Built-In Refrigerator. Should you require any guidance, a simple solution can often be found online at:

[www.argos-support.co.uk](http://www.argos-support.co.uk)

If you still require further assistance, call one of our experts on 0345 257 7271.

If you require any technical guidance or find that your product is not operating as intended, a simple solution can often be found in the **Troubleshooting** section of these instructions,

# Contents

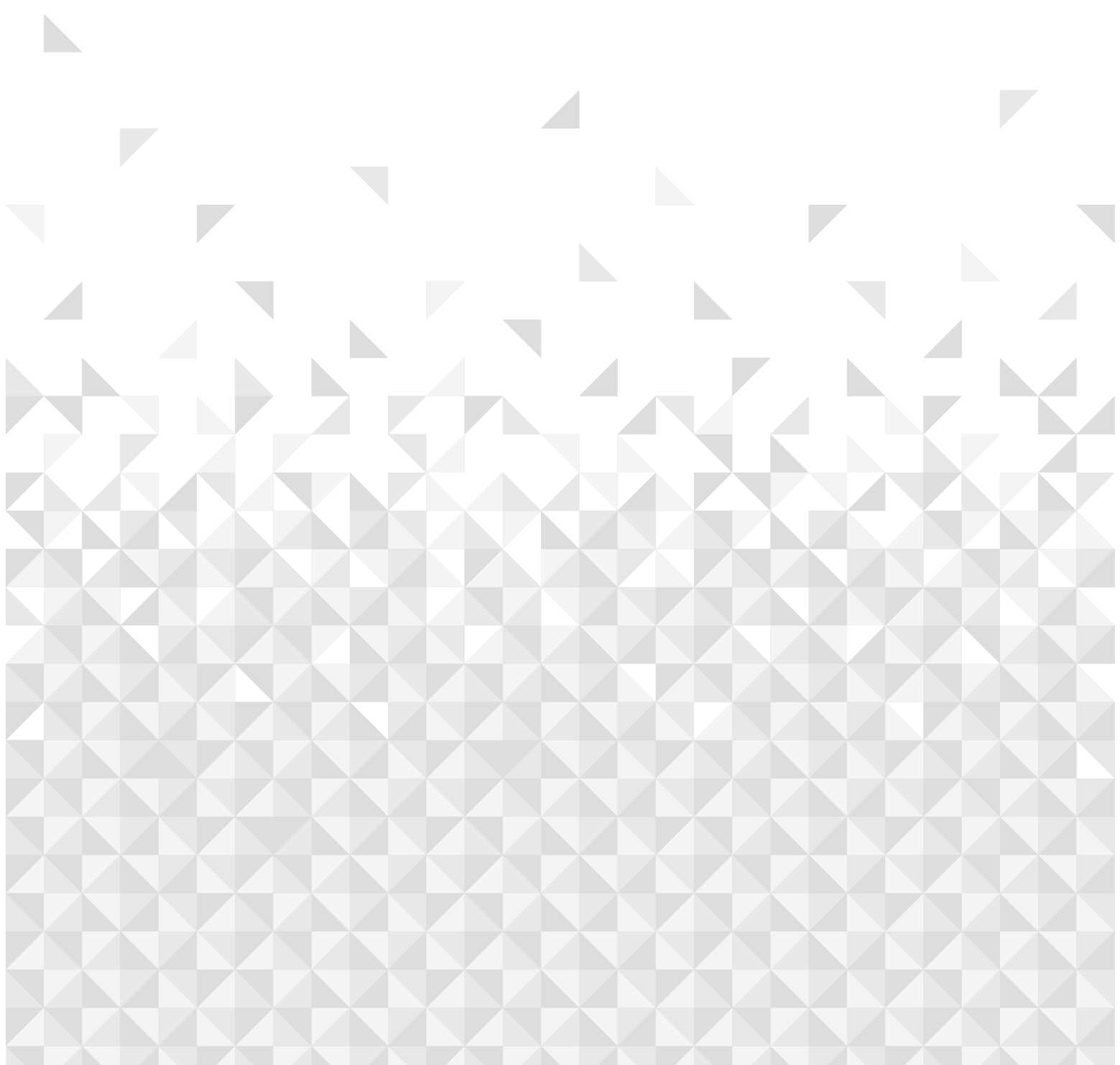
<b>1</b>	<b>Safety information</b>	<b>5</b>
	General warnings	6
	Safety warnings	7
<b>2</b>	<b>Getting to know your Built-In Refrigerator</b>	<b>9</b>
<b>3</b>	<b>Installing your Built-In Refrigerator</b>	<b>13</b>
	Installing and operating your refrigerator	14
	Before using your refrigerator	14
	Shipment and repositioning	14
	Electrical connection (For UK type plug)	15
	Installation	16
<b>4</b>	<b>Functions</b>	<b>25</b>
	Thermostat settings	26
<b>5</b>	<b>Using your Built-In Refrigerator</b>	<b>27</b>
	Arranging food in the appliance	28
	Tips for saving energy	28
	Accessories	29
<b>6</b>	<b>Care and maintenance</b>	<b>31</b>
	Cleaning and maintenance	32
	General defrosting	32
	Replacing the light bulb	33
	Technical specification	34
<b>7</b>	<b>Product support</b>	<b>35</b>
	Help and assistance	37
	Disposal	38
	Guarantee	39



If you require any technical guidance or find that your product is not operating as intended, a simple solution can often be found in the **Troubleshooting** section of these instructions,

# Safety information

**1**





## Safety information

**Important** - Please read these instructions fully before installing or operating

### General warnings

**WARNING:** Keep ventilation openings, in the appliance enclosure or in the built-in structure, clear of obstruction.

**WARNING:** Do not use mechanical devices or other means to accelerate the defrosting process, other than those recommended by the manufacturer.

**WARNING:** Do not use electrical appliances inside the food storage compartments of the appliance, unless they are of the type recommended by the manufacturer.

**WARNING:** Do not damage the refrigerant circuit.

**WARNING:** To avoid a hazard due to the instability of the appliance, it must be fixed in accordance with the instructions.

- If your appliance uses R600a as a refrigerant – you can learn this information from the label on the cooler- you should be careful during shipment and installation to prevent your appliance's cooler elements from being damaged. Although R600a is an environmentally friendly and natural gas. As it is explosive, in the event of a leak due to damage to the cooler elements, move your refrigerator from open flame or heat sources and ventilate the room where the appliance is located for a few minutes.
- While carrying and positioning the refrigerator, do not damage the cooler gas circuit.
- Do not store explosive substances such as aerosol cans with a flammable propellant in this appliance.
- This appliance is intended to be used in household and similar applications such as;
  - staff kitchen areas in shops, offices and other working environments
  - farm houses and by clients in hotels, motels and other residential type environments
  - bed and breakfast type environments;
  - catering and similar non-retail applications
- If the socket does not match the refrigerator plug, it must be replaced by the manufacturer, its service agent or similarly qualified persons in order to avoid a hazard.
- A specially grounded plug has been connected to the power cable of your refrigerator. This plug should be used with a specially grounded socket of 13 amperes. If there is no such socket in your house, please have it installed by an authorized electrician.
- This appliance can be used by children aged from 8 years and above and persons with reduced physical, sensory or mental capabilities or lack of experience and knowledge if they have been given supervision or instruction concerning use of the appliance in a safe way and understand the hazard involved. Children shall not play with the appliance. Cleaning and user maintenance, shall not be made by children without supervision.
- If the supply cord is damaged, it must be replaced by the manufacturer, its service agent or similar qualified persons in order to avoid a hazard.
- This appliance is not intended for use at altitudes exceeding 2000 m.

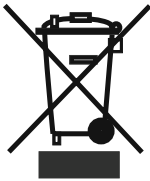


## Safety information

**Important** - Please read these instructions fully before installing or operating

### Old and out-of-order fridges and/or freezers

- If your old fridge and/or freezer has a lock, break or remove the lock before discarding it, because children may get trapped inside it and may cause an accident.
- Old fridges and freezers contain isolation material and refrigerant with CFC. Therefore, take care not to harm environment when you are discarding your old fridge and/or freezer.



Please ask your municipal authority about the disposal of the WEEE for the reuse, recycle and recovery purposes.

### Notes:

- Please read the instruction manual carefully before installing and using your appliance. We are not responsible for the damage occurred due to misuse.
- Follow all instructions on your appliance and instruction manual, and keep this manual in a safe place to resolve the problems that may occur in the future.
- This appliance is produced to be used in homes and it can only be used in domestic environments and for the specified purposes. It is not suitable for commercial or common use. Such use will cause the guarantee of the appliance to be cancelled and our company will not be responsible for the losses to be occurred.
- This appliance is produced to be used in houses and it is only suitable for cooling / storing foods. It is not suitable for commercial or common use and/or for storing substances except for food. Our company is not responsible for the losses to be occurred in the contrary case.

### Safety warnings

- Do not use multiple receptacles or extension cord.
- Do not plug in damaged, torn or old plugs.
- Do not pull, bend or damage the cord.
- This appliance is designed for use by adults, do not allow children to play with the appliance or let them hang off the door.
- Do not touch the plug with wet hands as this is an electrocution risk.
- Do not place glass bottles or beverage cans in the freezer compartment. Bottles or cans may explode.
- Do not place explosive or flammable material in your refrigerator for your safety. Place drinks with higher alcohol amount vertically and by closing their necks tightly in the refrigerator.
- When taking ice made in the freezer compartment, do not touch it, ice may cause ice burns and/or cuts.
- Do not touch frozen goods with wet hands! Do not eat ice-cream and ice cubes immediately after you have taken them out of the freezer compartment!
- Do not re-freeze frozen goods after they have melted. This may cause health issues like food poisoning.
- Do not put a cover over the freezer as this will affect product performance.
- Fix the accessories in the refrigerator during transportation to prevent damage to accessories.

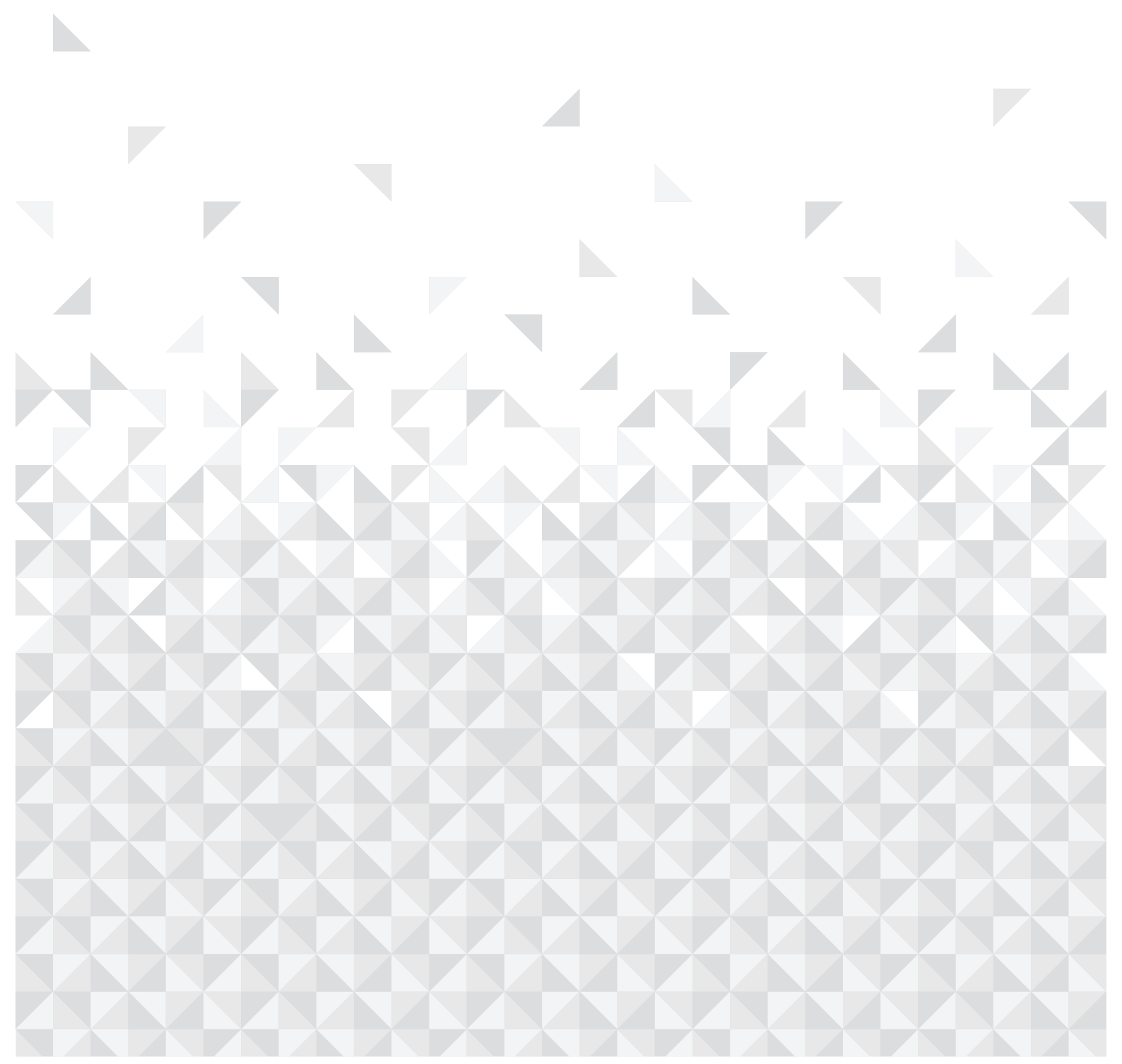


If you require any technical guidance or find that your product is not operating as intended, a simple solution can often be found in the **Troubleshooting** section of these instructions,



Getting to know your Built-In  
Refrigerator

2



## Getting to know your Built-In Refrigerator

You'll be up and running in no time

### Ready? Let's begin...

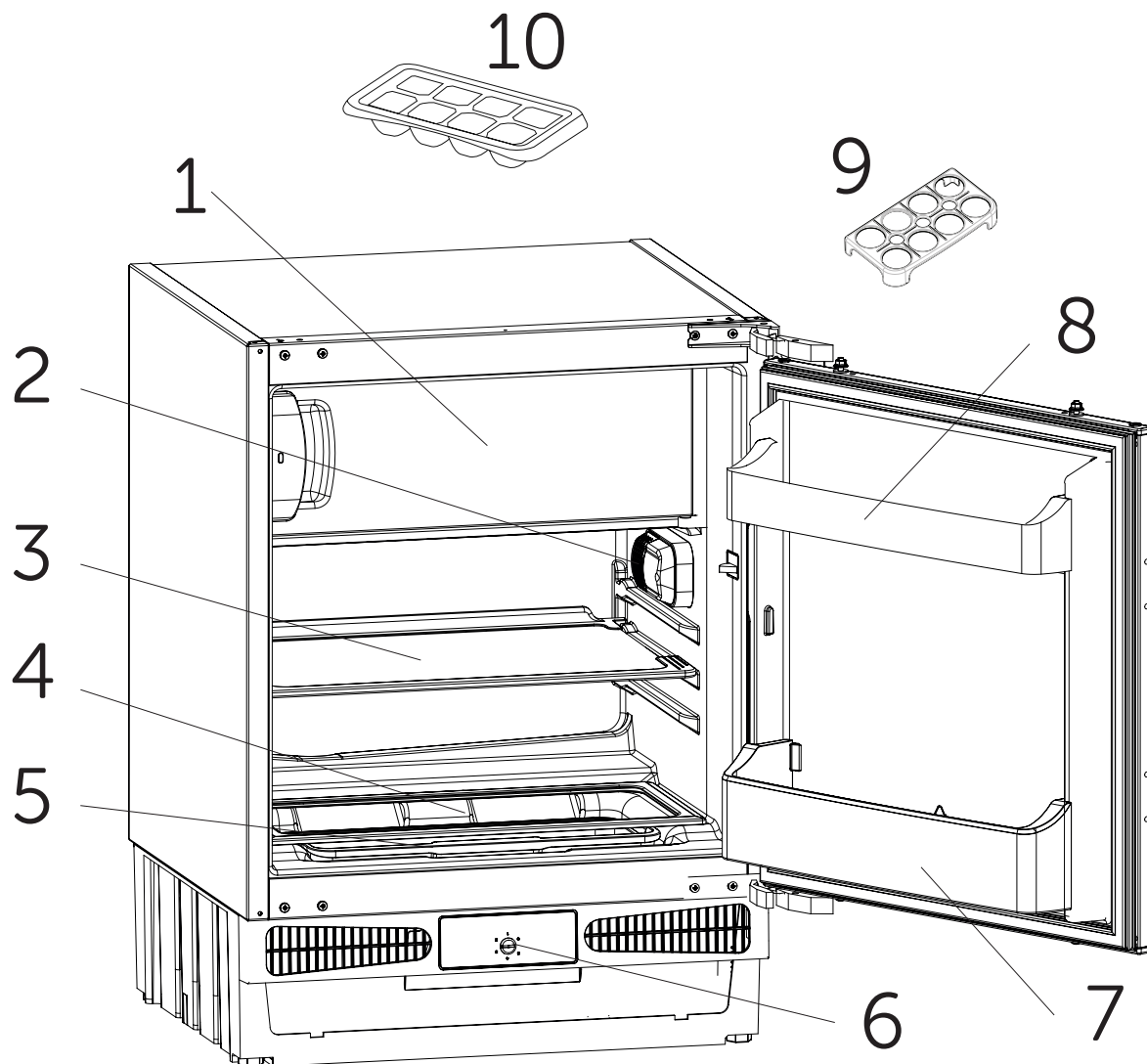
Please read these instructions carefully. They contain important information which will help you get the best from your Built-In Refrigerator and ensure safe

and correct installation and operation.

If you require any further assistance, our technical experts are happy to help. For full details, refer to the product support section at the end of these instructions.

## Getting to know your Built-Under Freezer

You'll be up and running in no time



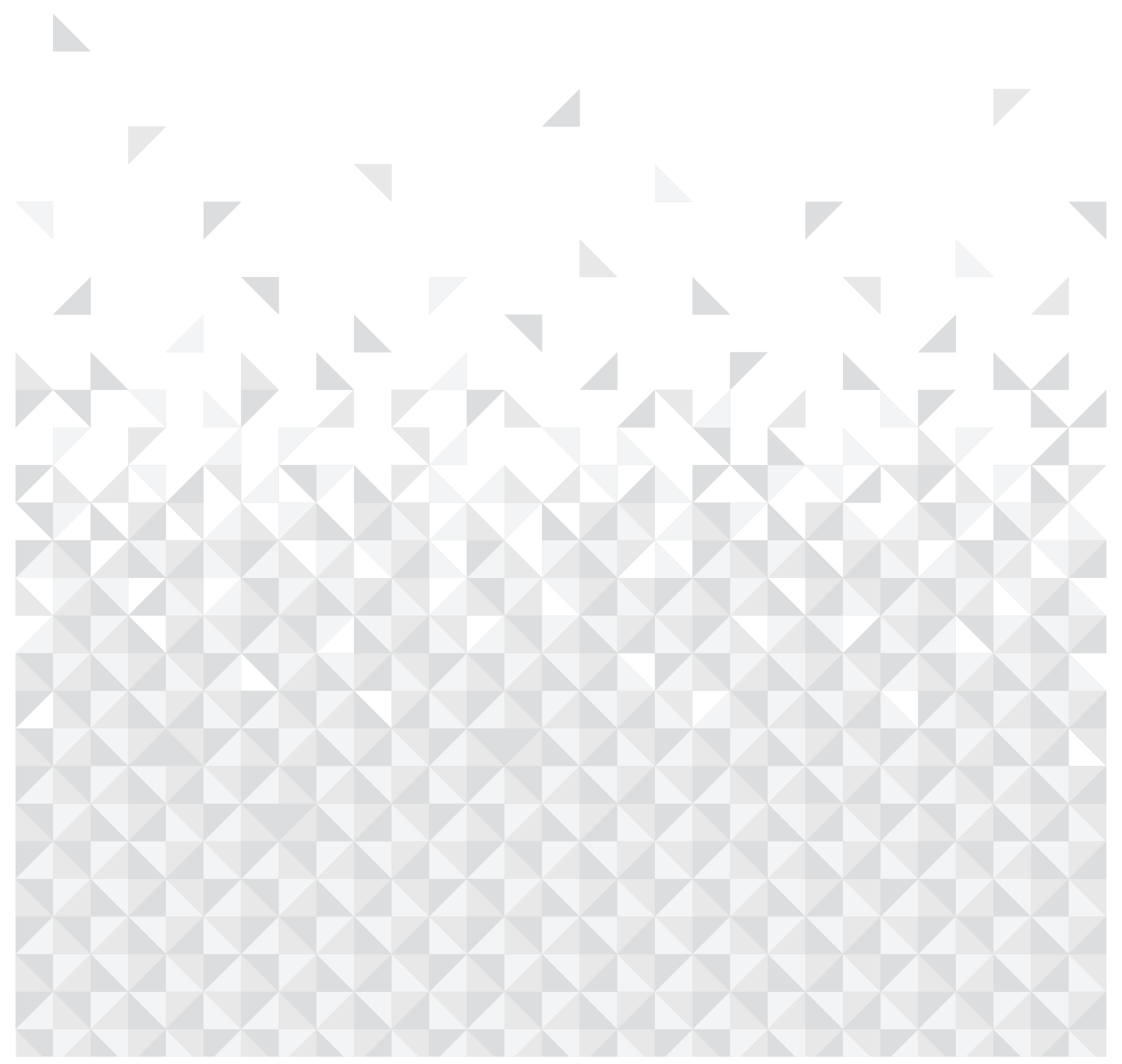
1. Freezer door
2. Refrigerator lamp
3. Refrigerator shelf x 1
4. Crisper cover x 1
5. Crisper x 1
6. Thermostat knob
7. Bottle shelf x 1
8. Upper shelf x 1
9. Egg holder x 1
10. Ice tray x 1



If you require any technical guidance or find that your product is not operating as intended, a simple solution can often be found in the **Troubleshooting** section of these instructions,

# Installing your Built-In Refrigerator

# 3



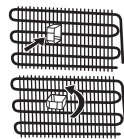
# Installing your Built-In Refrigerator

## Bringing it all together

### Installing and operating your refrigerator

Before starting to use your refrigerator, you should pay attention to the following points:

- Operating voltage for your refrigerator is 220-240 V at 50Hz.
- We cannot be responsible for any damages that occur to this product if used incorrectly.
- Do not place your appliance in direct sunlight.
- Your appliance should be at least 50 cm away from stoves, gas ovens and heater cores, and should be at least 5 cm away from electrical ovens.
- Your refrigerator should never be used outdoors or exposed to rain.
- When your refrigerator is placed next to a deep freezer, there should be at least 2 cm between them to prevent humidity on the outer surface.
- When installing the refrigerator, chose a suitable place and ensure that there is a least a 15cm gap between the top of the refrigerator and the counter. Please do not place anything on top of the refrigerator.
- The adjustable front legs should be stabilized in an appropriate height to allow your refrigerator operate in a stable and proper way. You can adjust the legs by turning them clockwise (or in the opposite direction). This should be done before placing food in the refrigerator.
- Before using your refrigerator, wipe all parts with warm water added with a tea spoonful of sodium bicarbonate, and then rinse with clean water and dry. Place all parts after cleaning.
- Install the distance adjustment plastic (the part with black vanes at the rear) by turning it 90° as shown in the figure to prevent the condenser from touching the wall.
- Refrigerator should be placed against a wall with a free distance not exceeding 75 mm.



### Before using your refrigerator

- Before switching on your appliance for the first time, ensure it is positioned in its desired final location and is in its upright position for at least 3 hours before plugging in and switching on the power. Otherwise you may damage the compressor.
- You may experience an odour from the appliance when it is operated for the first time. This is normal and will fade when your appliance starts to cool.

### Shipment and repositioning

- Original package and foam may be kept for retransportation (optionally).
- You should fasten your refrigerator with thick package bands or strong cords and follow the instructions for transportation on the package for retransportation.
- Remove movable parts (shelves, accessories, vegetable bins etc.) or fix them into the refrigerator against shocks using bands during repositioning and transportation.

Carry your refrigerator in the upright position.

# Installing your Built-In Refrigerator

## Bringing it all together

### Electrical connection (For UK type plug)

For your safety please read the following information

**Warning:** This appliance must be earthed.

This appliance operates from 220-240 volts and should be protected by a 13 amp fuse in the plug.

The appliance is supplied with a standard 13 amp 3-pin mains plug fitted with a 13-amp fuse.

Should the fuse require replacement, it must be replaced with a fuse rated at 13 amp and approved to BS1362.

If the mains plug which is fitted is unsuitable for the socket outlet in your home or is removed for any other reason, please follow the instructions below on how to wire a 13 amp 3 pin plug.

The wires in the mains lead on this appliance are coloured in accordance with the following code:

**Green and Yellow – Earth**

**Blue – Neutral**

**Brown – Live**

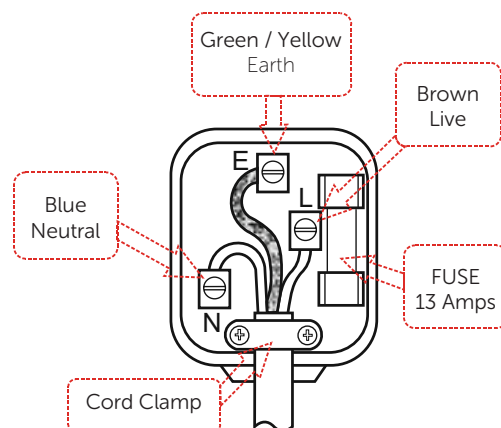
As the colours may not correspond with the markings identifying the terminals in your plug proceed as follows.

The green and yellow wire must be connected to the terminal in the plug which is marked with the letter E or with the earth symbol or coloured green and yellow.

The blue wire must be connected to the terminal marked N.

The brown wire must be connected to the terminal marked L.

You must make sure the lead is firmly secured under the cord clamp.



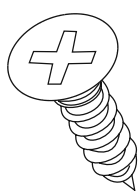
# Installing your Built-In Refrigerator

Bringing it all together

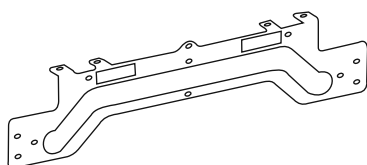
## Installation

### Installation kit contents

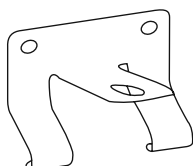
A. Wood screw x17



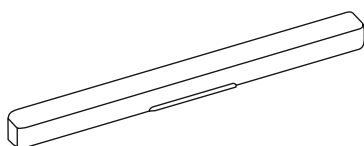
B. Door hang



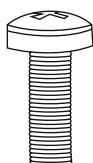
C. Door Bottom Fixings x2



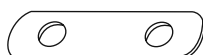
D. Hang cover



E. Screw

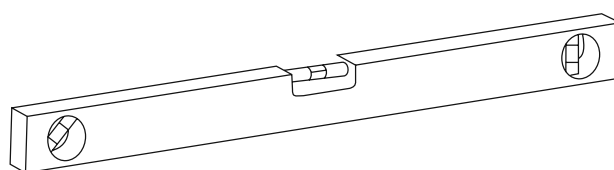


F. Top bracket

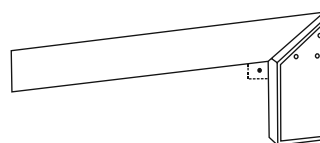


### Tools required

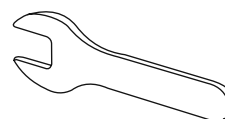
Spirit level



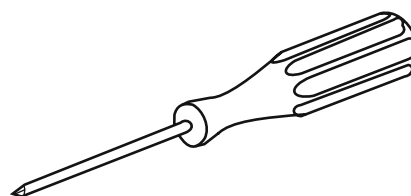
Setsquare



Wrench



Screwdriver





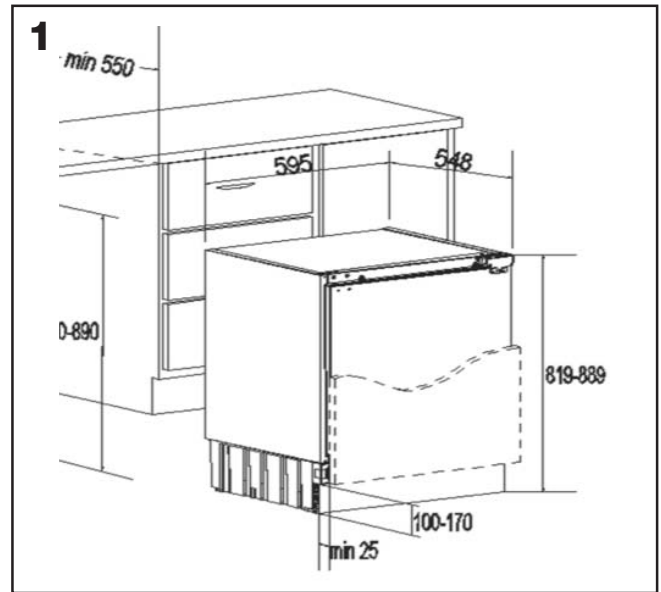
# Installing your Built-In Refrigerator

## Bringing it all together

### Dimensions for installation

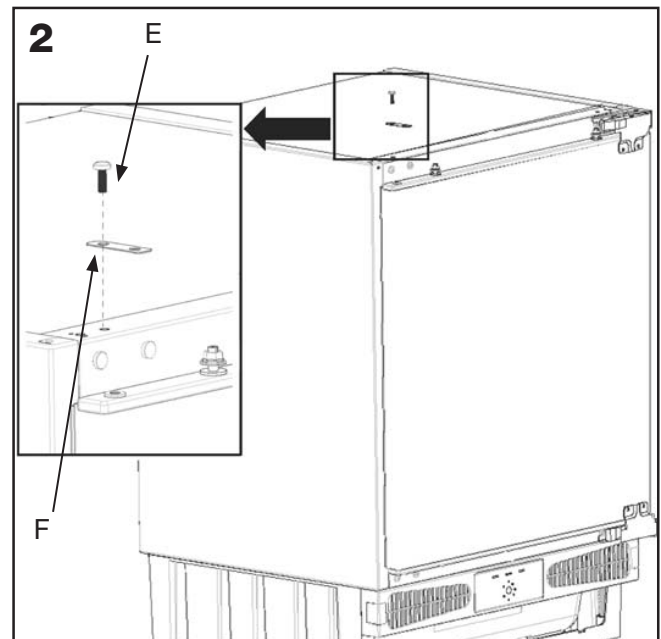
**Caution:** 2 people are required to unpack and handle the refrigerator. It is recommended that gloves are worn.

- a: Carefully remove all packaging materials and dispose of correctly.
- b: Make sure that the space available for the refrigerator is large enough as per the dimensions (1).



### Installing top bracket

- a: Remove the screw (E) on top of the refrigerator, place the top bracket (F) in position and fix with the screw (E).

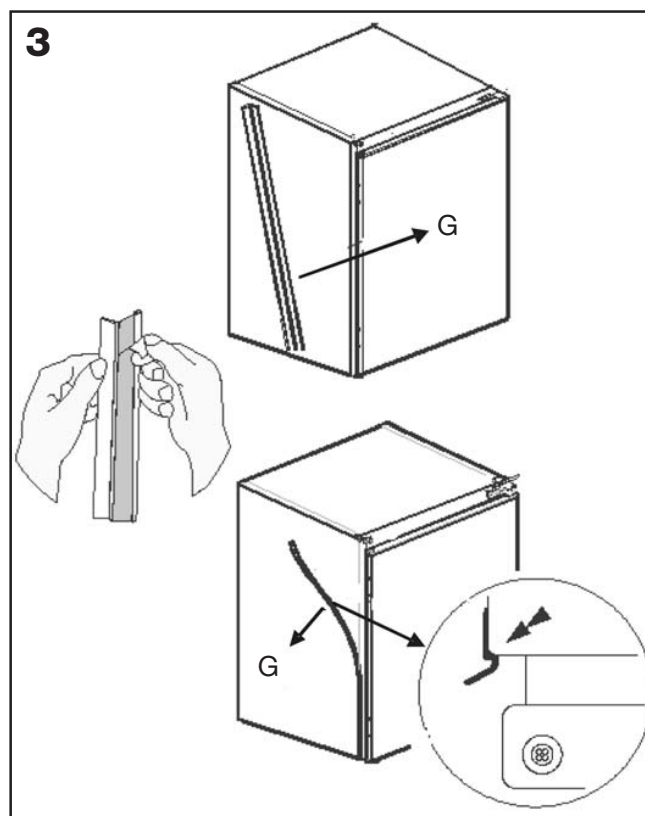


## Installing your Built-In Refrigerator

### Bringing it all together

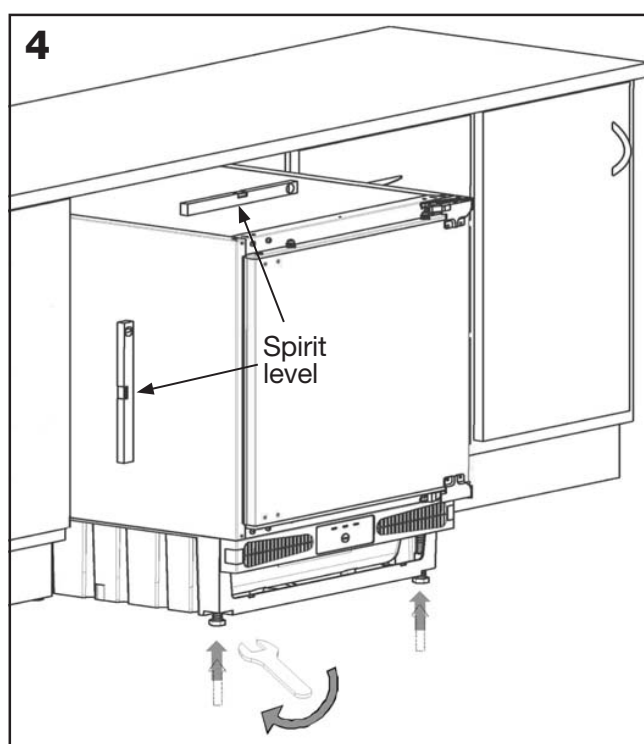
#### Fitting the door gasket

- a: Take out the gasket (G) located on the side panel, and remove the protective tape.
- b: Stick the gasket (G) on the refrigerator side panel, on the opposite side to the door hinges, as shown (3).



#### Height adjustment

- a: If necessary, the height of the refrigerator can be adjusted, by loosening the locking nuts on the adjustable feet and screwing the feet in or out to the desired height. A wrench may be required to undo the locking nuts.
- b: When the desired height is reached, re-tighten the locking nuts using the wrench to lock the adjustable feet in position.



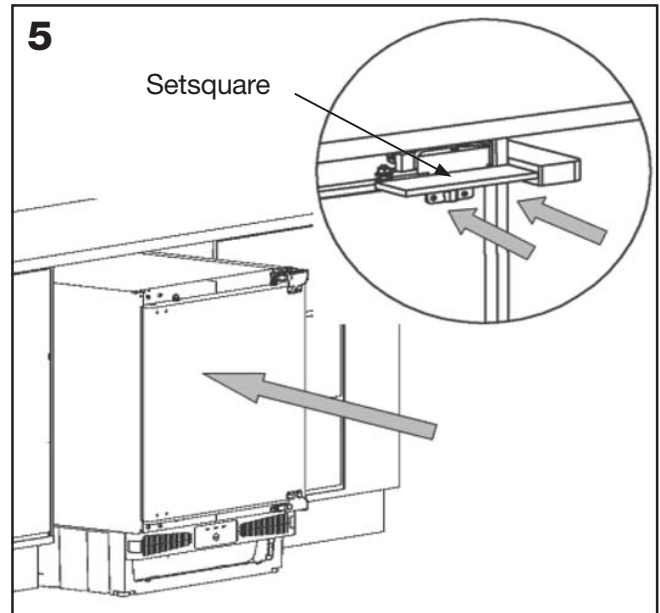
# Installing your Built-In Refrigerator

## Bringing it all together

### Position the refrigerator

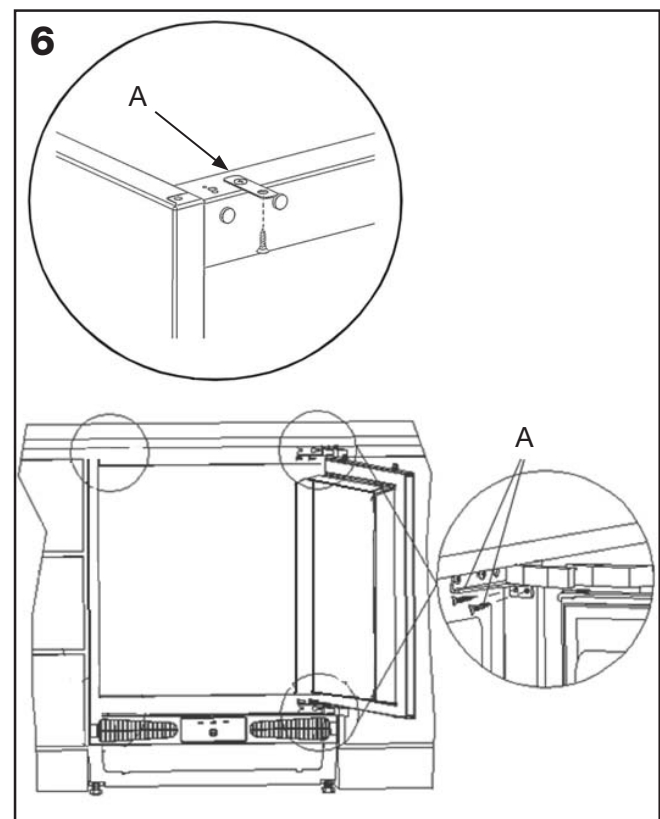
**Caution:** The refrigerator may require 2 people to handle it when pushing it into position.

- a: Check behind the refrigerator to make sure there are no tools or obstructions that may cause damage.
- b: Carefully slide the refrigerator into position until the hinge surface is aligned with the front surface of the kitchen unit.
- c: Check that the refrigerator is square using the setsquare.



### Securing the refrigerator

- a: Secure the refrigerator to the kitchen units using screws (A), through the top bracket (F) and through both the upper and lower door hinges as shown (6).

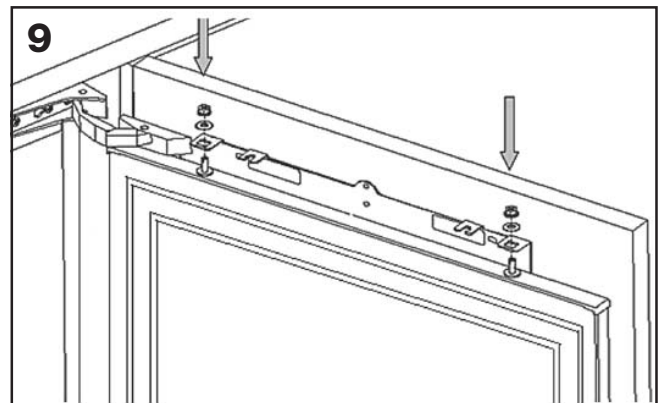
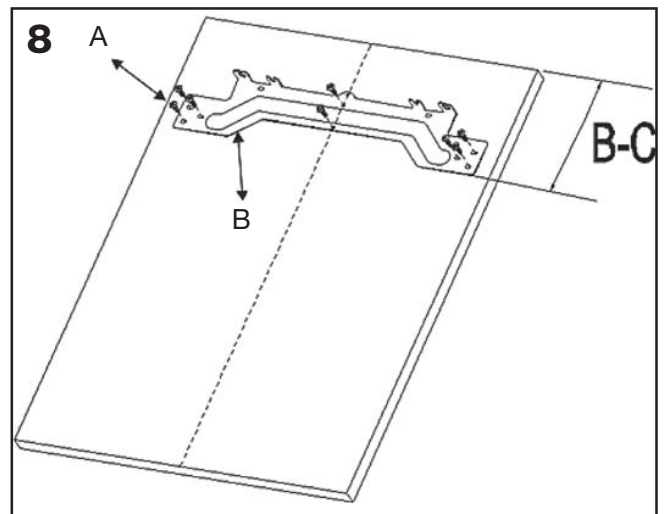
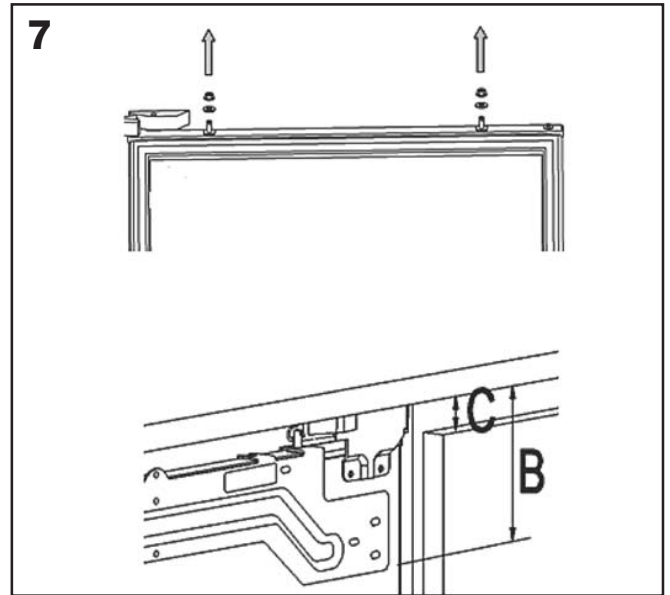


# Installing your Built-In Refrigerator

## Bringing it all together

### Fitting the cabinet door

- a: Unscrew and remove the nuts and washers from the appliance door.
- b: Place door hang on the appliance door by inserting the holes to adjustment bolts.
- c: Dimension B= Measure from the underside surface of kitchen unit to the bottom of door hang. Dimension C= Measure from the underside surface of kitchen unit to the top of next unit door.
- d: Subtract C from B and place door hang (B) using this dimension for vertical position and place to the centre for horizontal position.
- e: Screw the door hang (B) using screws (A).
- f: Place the cabinet door onto the appliance door by inserting adjustment bolts into the slots on the door hang.
- g: Place the washers and screw the nuts onto the adjustment bolts.



Continued on next page

If you require any technical guidance or find that your product is not operating as intended, a simple solution can often be found in the Troubleshooting section of these instructions,

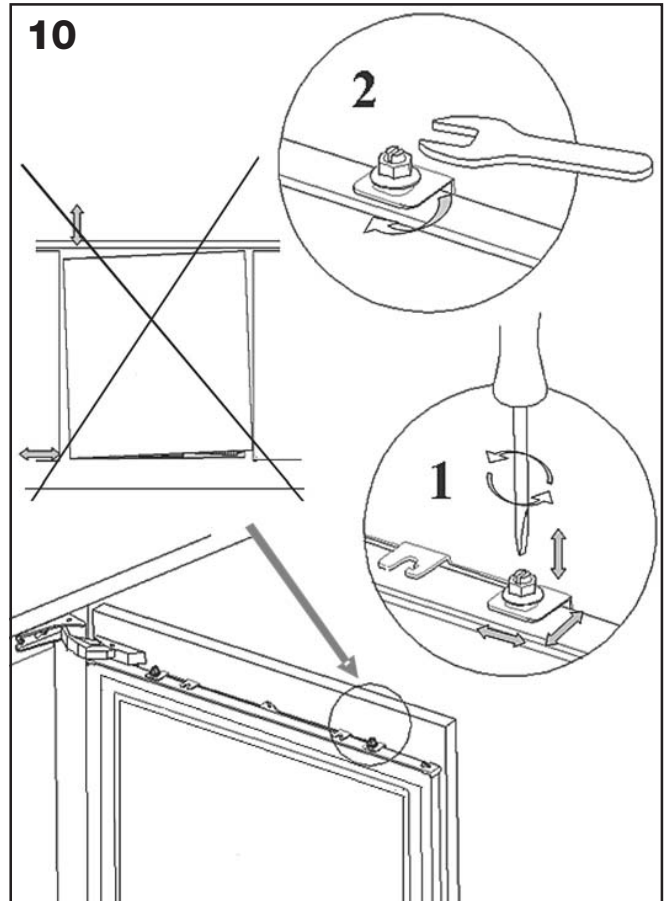
# Installing your Built-In Refrigerator

## Bringing it all together

h: Close the door and check the alignment with the other cabinet doors.

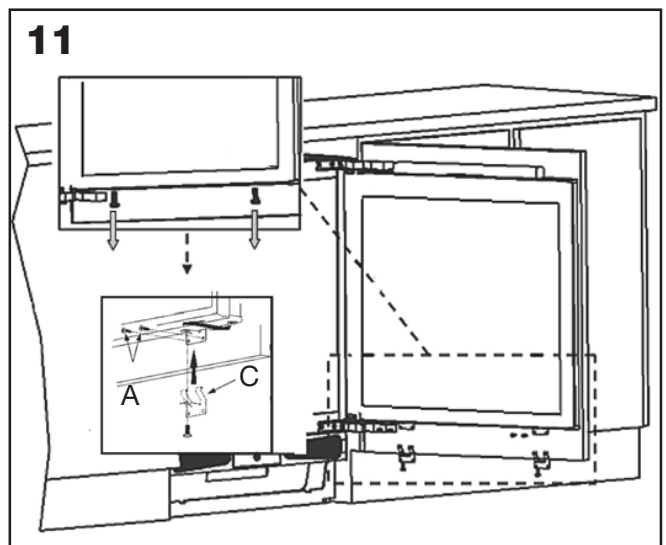
i: Make the adjustment of the unit door by screwing or unscrewing the adjustment bolts for vertical adjustment and by the help of the slots on the door hang for other directions.

j: Tighten the nuts to fix the bracket.



k: Remove the screws at the bottom of the appliance door.

l: Place the door bottom fixings (C) and screw the fixings to the appliance door and the cabinet door using screws (A).

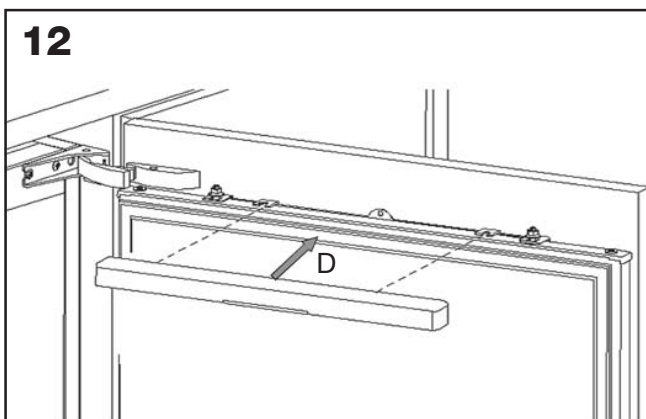


Continued on next page

# Installing your Built-In Refrigerator

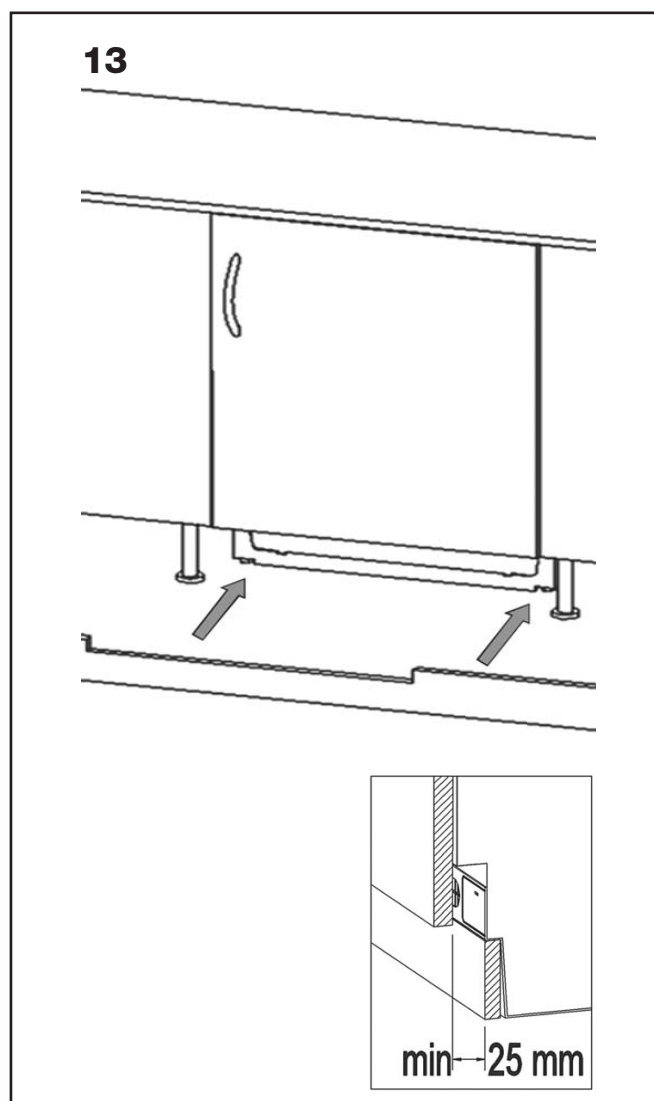
## Bringing it all together

m: Slide the hang cover (D) onto the door hang (B).



### Installing the plinth

a: Position the plinth providing minimum 25 mm gap between the cabinet door and fix it.



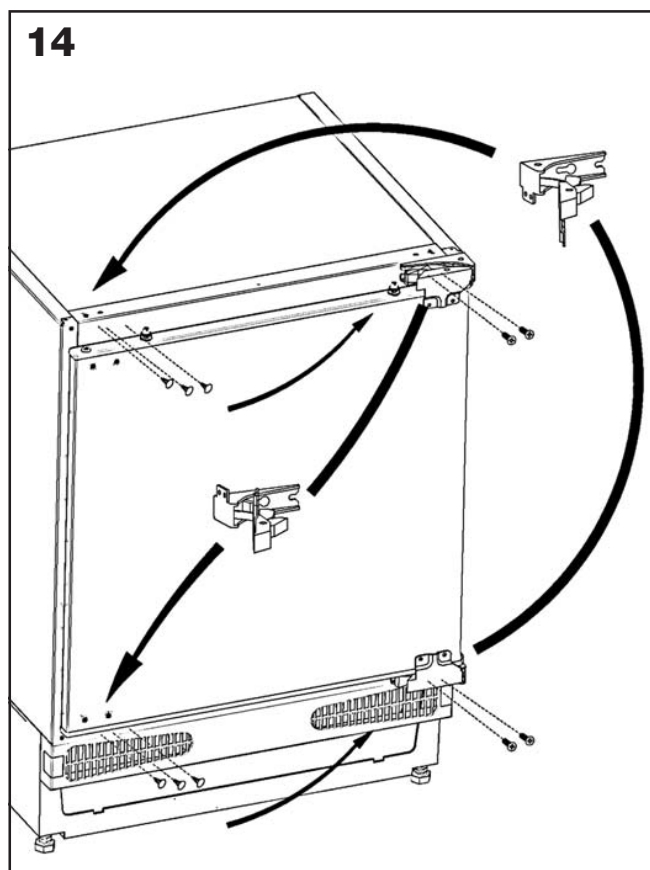
If you require any technical guidance or find that your product is not operating as intended, a simple solution can often be found in the Troubleshooting section of these instructions,

## Installing your Built-In Refrigerator

### Bringing it all together

#### Reversing the door

- a: Unscrew the screws on the front surface of the appliance door. Take the appliance door to a safe place.
- b: Move the hole plugs on the appliance door's front surface, to the holes on the reverse side.
- c: Open the door upper hinge and door lower hinge, disassemble them.
- d: Move the hole plugs to opposite side.
- e: Assemble the door upper hinge and door lower hinge to the opposite corners of their original position.
- f: Assemble the appliance door.

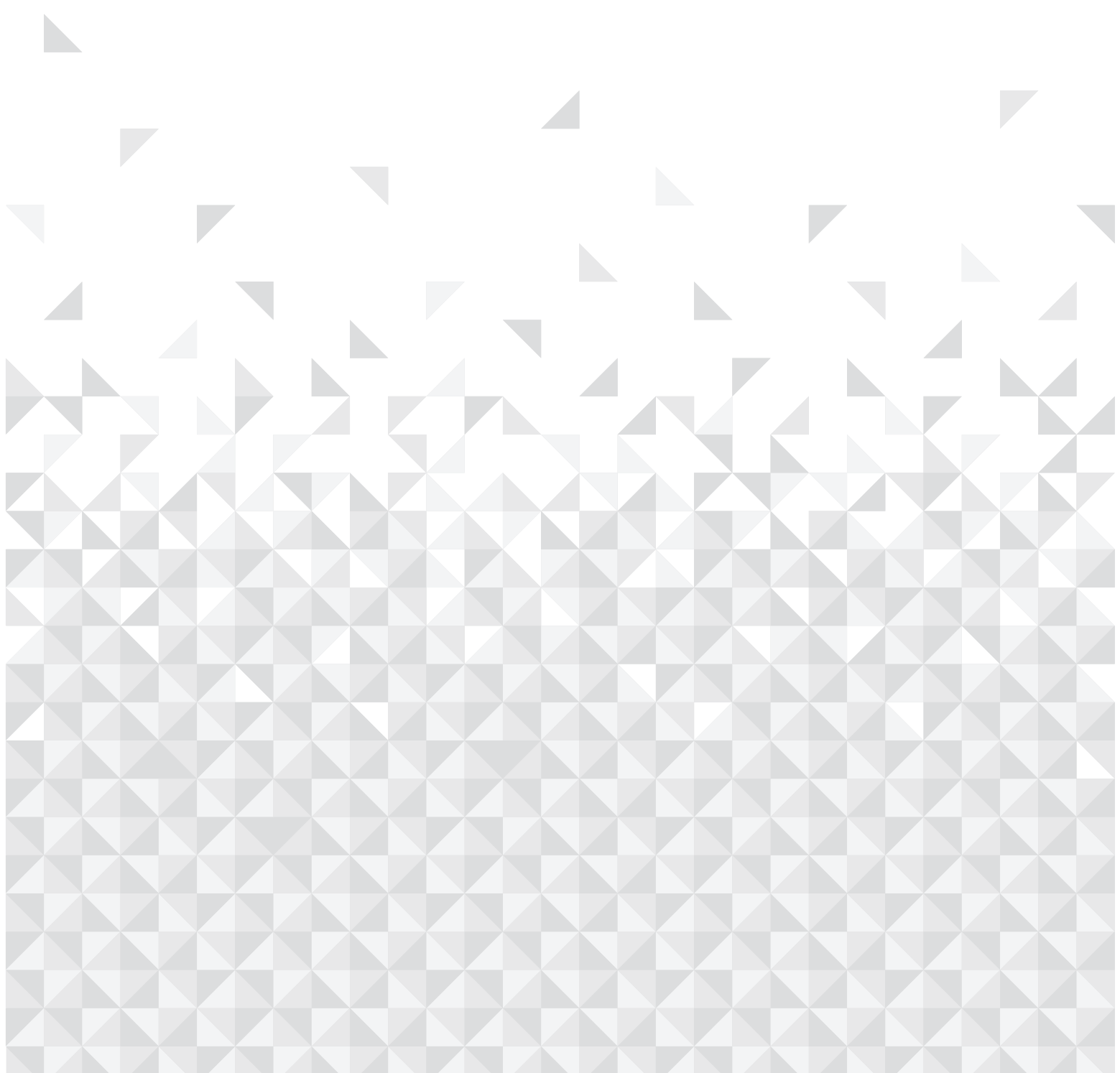




If you require any technical guidance or find that your product is not operating as intended, a simple solution can often be found in the **Troubleshooting** section of these instructions,



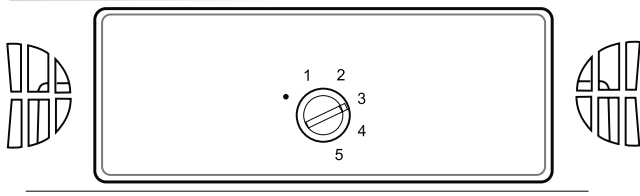
# Functions 4



## Functions

Simple everyday use

### Thermostat settings



**Important note:** Do not try to rotate knob beyond 1 position it will stop your appliance.

Thermostat automatically regulates the inside temperature of the refrigerator compartment and freezer compartment. By rotating the knob from position 1 to 5, colder temperatures can be obtained.

- For short-term storage of food in the freezer compartment, you can set the knob between minimum and medium position (1-3).
- For long-term storage of food in the freezer compartment, you can set knob medium position.(3-4)

**Note that;** the ambient temperature, temperature of the freshly stored food and how often the door is opened, affects the temperature in the refrigerator and freezer compartments. If required, change the temperature setting.

- When you first switch on the appliance, you should ideally try to run it without any food in for 24 hours and not open the door. If you need to use it straight away, try not to put much food inside.
- If the unit is switched off or unplugged, you must allow at least 5 minutes before restarting in order not to damage the compressor.

**Refrigerators (with 4 star rating):** The freezer of the refrigerator cools down to  $-18^{\circ}\text{C}$  and less.

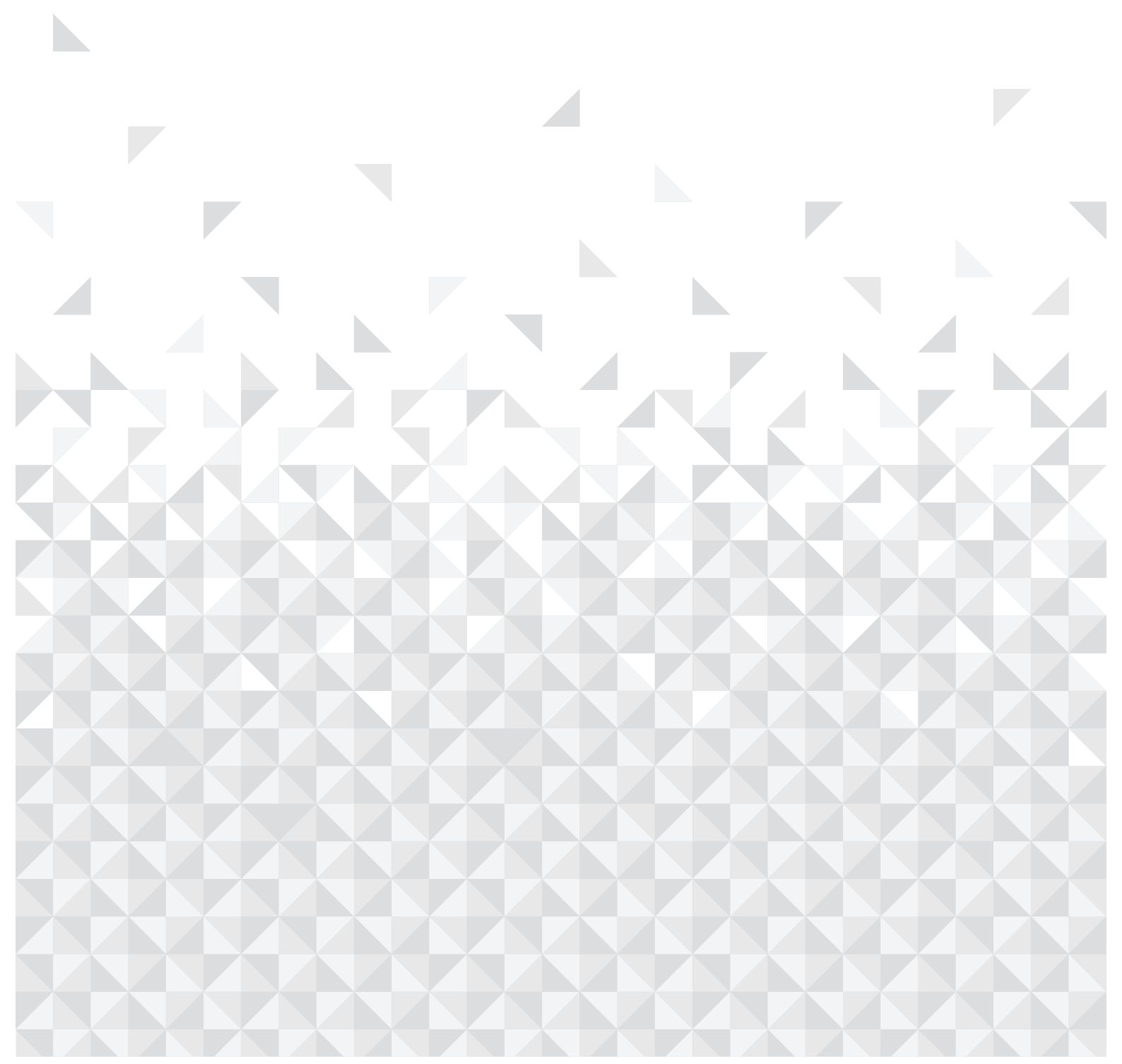
If your refrigerator is not cold enough

- The ambient temperature, temperature of the freshly stored food and how often the door is opened, affects the temperature in the refrigerator. If required, change the temperature setting.
- It is not recommended that you operate your refrigerator in environments colder than  $10^{\circ}\text{C}$ .
- The thermostat setting should be set by taking into consideration how often the refrigerator door is opened and closed, how much food is stored in the refrigerator and the environment in which and the positioning of the appliance.
- We recommend that when first using the refrigerator it should be left running for 24 hours uninterrupted to ensure it is completely cooled. Do not open the refrigerator door, or put food inside for this period.
- Your refrigerator has a 5 minute built in delay function, designed to prevent damage to the compressor. When power is applied to your refrigerator, it will begin to operate normally after 5 minutes.
- Your refrigerator is designed to operate in the ambient temperature intervals stated in the standards, according to the climate class stated in the information label. It is not recommended that your refrigerator is operated in the environments which are out of the stated temperature intervals in terms of cooling efficiency.
- This appliance is designed for use at an ambient temperature within the  $10^{\circ}\text{C}$  -  $32^{\circ}\text{C}$  range.

Climate Class	Ambient Temperature $^{\circ}\text{C}$
T	Between 16 and 43 ( $^{\circ}\text{C}$ )
ST	Between 16 and 38 ( $^{\circ}\text{C}$ )
N	Between 16 and 32 ( $^{\circ}\text{C}$ )
SN	Between 10 and 32 ( $^{\circ}\text{C}$ )

# Using your Built-In Refrigerator

# 5



# Using your Built-In Refrigerator

## Getting the most from your appliance

### Arranging food in the appliance

#### Fridge compartment:

- To reduce frost build up never place liquids with unsealed containers in the fridge compartment.
- Allow warm or hot food to cool down before storing. This helps reduce power consumption.
- To avoid frost buildup ensure that nothing is stored touching the back wall.
- The coldest area of the refrigerator is at the bottom. We recommend to use this area to store food that will perish easily, such as fish, ready meals, baked goods or dairy products. The warmest area is the top shelf of the door. We recommend you store butter or cheese here.

#### Freezer compartment:

The freezer compartment is used for freezing fresh foods and for storing frozen foods for the period of time indicated on packaging, and for making ice cubes.

- Use the deep freeze compartment of your refrigerator for storing the frozen food for a long time and for producing ice.
- It is recommended to keep thermostat set at level 2-3.
- It is recommended that the food which is being newly frozen be kept separate from the already frozen food.
- Foods should be frozen in single portion sized containers.
- Do not refreeze the frozen food once it is thawed. It may pose a danger to your health as it might cause problems like food poisoning.
- Do not place hot meals in your deep freeze until they cool down. You could cause the other food frozen beforehand in the deep freeze compartment to become spoiled.
- As you buy frozen food, make sure it was frozen under appropriate conditions and that the packaging is not torn.
- While storing frozen food, the storage

conditions on the package should certainly be observed. If there are no instructions, the food has to be consumed in the shortest possible period of time.

- The storage durations of frozen food change depending on the environmental temperatures, the frequent opening and closing of the doors, thermostat settings, food types, and the period of time that elapsed from when the food was acquired to the time it entered the freezer. Always abide by the instructions on the package and never exceed the storage duration.
- During extended power outages, please do not open the door of the deep freeze compartment. Your refrigerator will preserve your frozen food in the ambient environmental temperature of 25°C for about 10 hours. This preservation time period decreases the higher the ambient environmental temperatures are. During longer lasting power cuts, you should not refreeze your food.

### Tips for saving energy

1. Install the appliance in a cool, well ventilated room, but not in direct sunlight or near heat sources (radiators, cooker, etc...).
2. Allow warm food and drinks to cool down before placing in the appliance.
3. When placing food in the appliance they must be covered.
4. When placing food, open the appliance door as briefly as possible.
5. Keep closed the covers of any different temperature compartments in the appliance (freezer room... etc ).
6. Door seals should be kept clean and undamaged.

If you require any technical guidance or find that your product is not operating as intended, a simple solution can often be found in the **Troubleshooting** section of these instructions,

## Using your Built-In Refrigerator

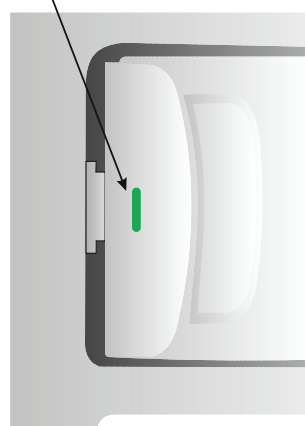
Getting the most from your appliance

### Accessories

#### "Door Open" Indicator

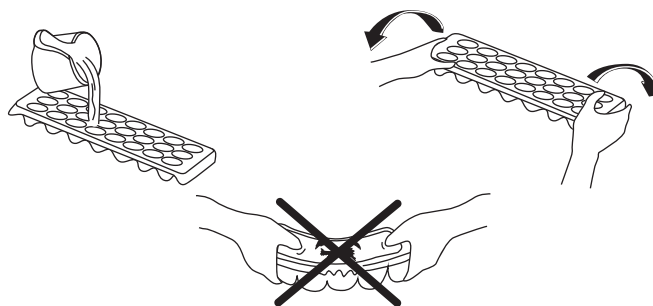
- The « Door Open » indicator on the handle shows whether the door has closed properly or whether it is still open.
- If the indicator is red, the door is still open.
- If the indicator is white, the door is properly closed.
- Observe that the freezer's door should always be kept closed. This will prevent food products from defrosting; it will avoid heavy ice and frost build-up inside the freezer and an unnecessary increase in energy consumption.

"Door Open" Indicator



#### Ice tray

- Fill the ice tray with water and place in the freezer compartment.
- After the water has completely turned into ice, you can twist the tray as shown below to remove the ice cubes.

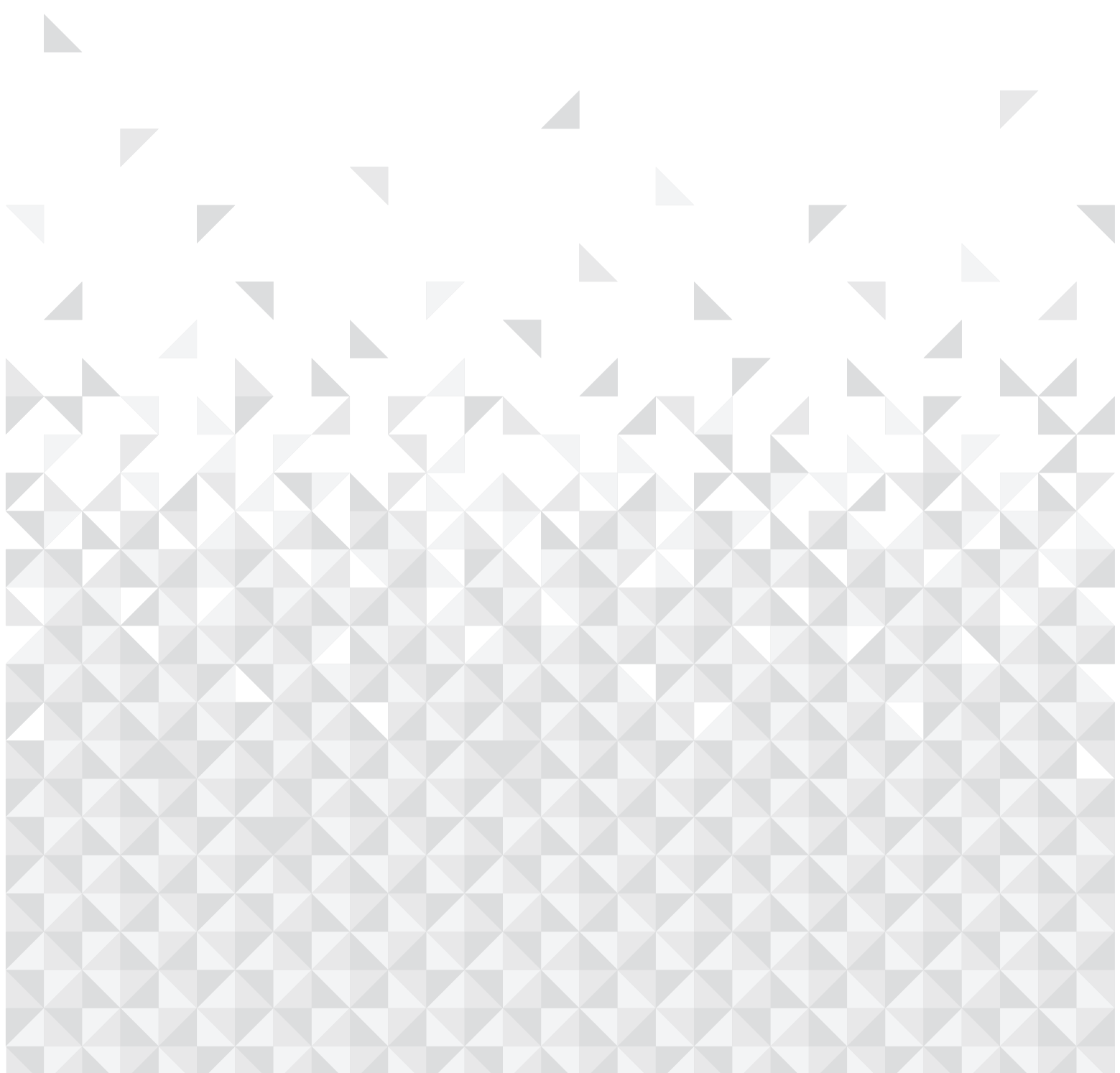




If you require any technical guidance or find that your product is not operating as intended, a simple solution can often be found in the **Troubleshooting** section of these instructions,

# Care and maintenance

# 6



## Care and maintenance

### Looking after your appliance

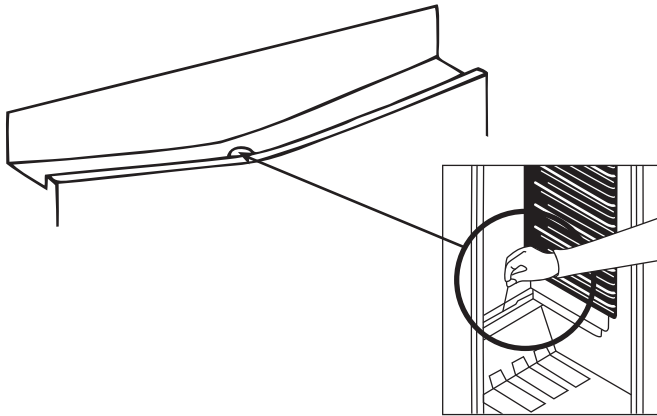
## Cleaning and maintenance

### General

- Do not pour water over the appliance.
- Clean the accessories separately with soap and water. Do not put them in the dishwasher.
- Do not use abrasive products, detergents or soaps. After washing, rinse with clean water and dry carefully. When the cleaning operations have been completed, reconnect the plug with dry hands.
- **Warning:** never use sharp metal tools for this operation unless recommended by the manufacturer, as they can damage the freezing circuit.

## General defrosting

### Fridge compartment;



- Defrosting occurs automatically in refrigerator during operation; the defrost water is collected by the evaporating compartment and evaporates automatically.
- The defrost water drain hole should be cleaned periodically with defrost drain plug to prevent the water from collecting on the bottom of the refrigerator instead of flowing out.
- You can also pour 1/2 glass of the water to drain hole to clean inside.

### Freezer compartment;

The frost, accumulated in the freezer compartment, should be removed periodically. (Use the plastic scraper provided) The freezer compartment should be cleaned in the way as the refrigerator compartment, with the defrost operations of the compartment at least twice a year.

### For this;

- The day before you defrost, set the thermostat dial to "5" position to freeze the foods completely.
- During defrosting, frozen foods should be wrapped in several layers of paper and kept in a cool place. The inevitable rise in temperature will shorten their storage life. Remember to use these foods within a relatively short period of time.
- Set thermostat knob to position « • » or unplug the unit; leave the door open until completely defrosted.
- To accelerate the defrosting process one or more basins of warm water can be placed in the freezer compartment.
- Dry the inside of the unit carefully and set the thermostat knob to MAX position.



## Care and maintenance

### Looking after your appliance

#### Replacing the light bulb

When replacing the bulb of the refrigerator;

1. Unplug the unit from the power supply.
2. Press the hook in front of the light cover such as Figure 1 and remove the light cover.
3. Change the present light bulb with a new one of not more than 15 W.
4. Replace the light cover and after waiting 5 minutes plug the unit.

#### Replacing LED Lighting

If your refrigerator has LED lighting contact the help desk as this should be changed by authorized personnel only. Contact the Bush helpline.

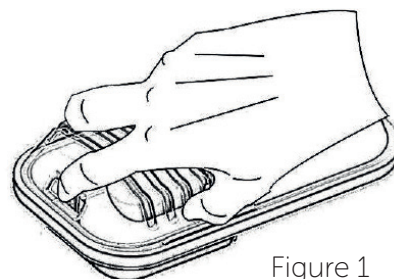


Figure 1

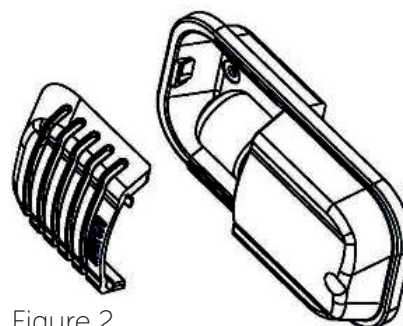


Figure 2

## Care and maintenance

Looking after your appliance

## Technical specification

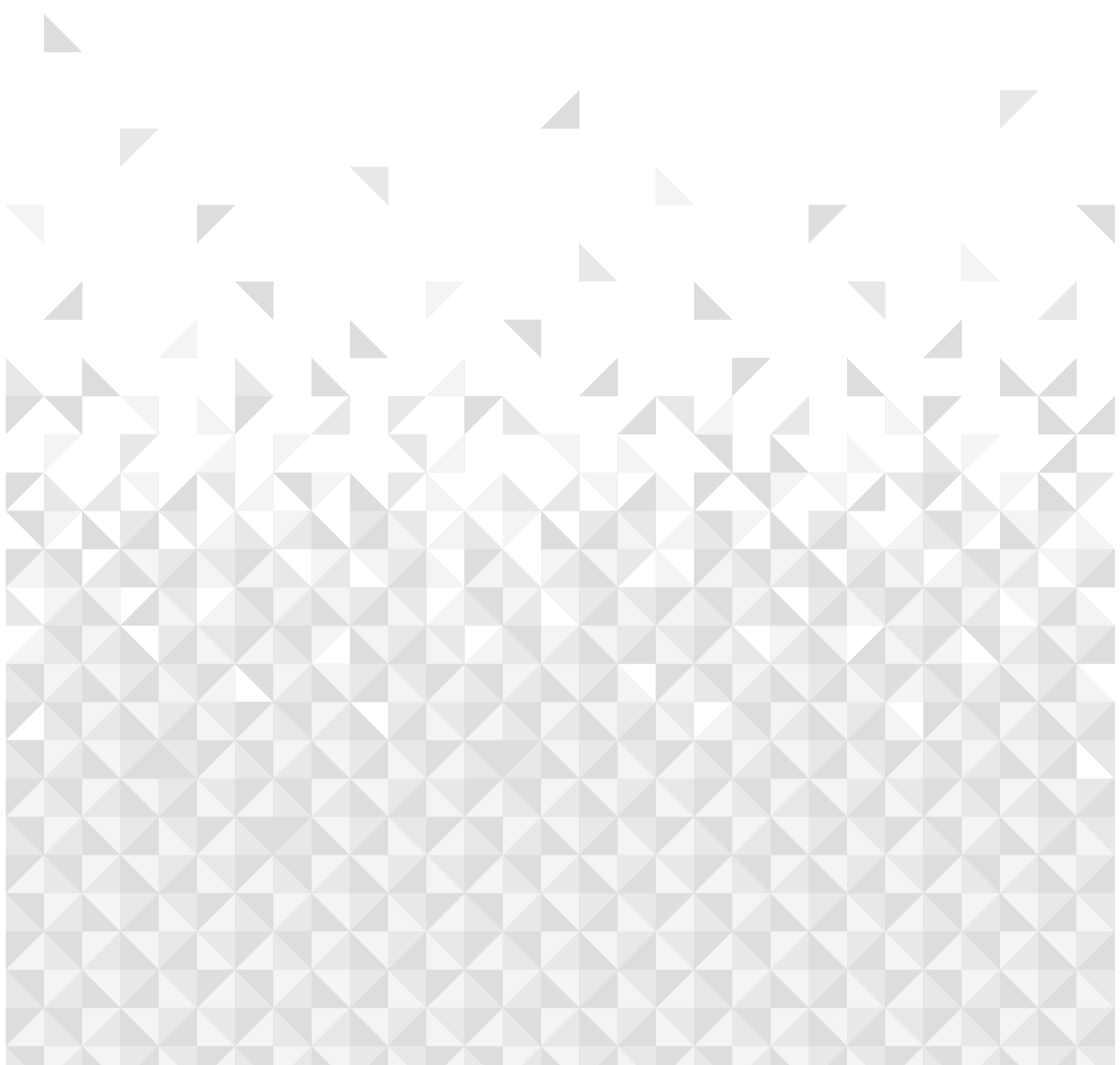
Supplier's name or trademark	<b>BUSH</b>
Model / Item	BUCFR6082
Type of appliance	BGSN1600DOD
Energy efficiency class	A+
Voltage	220-240V / 50 Hz
Energy consumption	0.468 kWh/24h - 171 kWh/year
Net storage volume of fresh food	98 lt.
Net storage volume of chiller	-
Net storage volume of frozen food	17 lt.
Star rating of frozen food storage compartment	4 (****)
Power cut failure safe storage	10 hours (25°C)
Freezing capacity	2 Kg
Climate class	SN (10°C - 32°C)
Size (mm) (W x D x H)	595 x 548 x 818
Noise	44 dB (A)

We apologise for any inconvenience caused by minor change or inconsistencies in these instructions that may occur as a result of product improvements and development.



Product support

7



## Product support

Help is always at hand

If your refrigerator is not working properly there may be a minor problem, therefore check the following

Problem	Possible Causes	Possible Solutions
The appliance does not operate	There is a power failure The mains plug is not properly plugged in, or is loose The thermostat setting is on position "•"	The socket is defective. To check this, plug in a fully operable appliance into the same socket
The appliance performs poorly	You have overloaded the appliance The door is not closed perfectly	There is not sufficient ventilation around the appliance
There is a noise	The cooling gas which circulates in the refrigerant circuit may make a slight noise (bubbling sound) even when the compressor is not running. Do not worry, this is quite normal. If these sounds are different check if; <ul style="list-style-type: none"><li>• The appliance is installed firmly as described in the section of this instruction manual</li><li>• Objects on the appliance are vibrating</li></ul>	

### Important notes:

- During power cut, to prevent any compressor problem you should unplug the refrigerator. You should delay plugging in 5 – 10 minutes after your power supply returns. Of you plug out the refrigerator for a reason you should wait at least 5 min to replug. It is important for avoiding damage to refrigerator's components.
- If you will not be using your refrigerator for a long time (holiday, etc...), disconnect the plug from the socket. Clean your refrigerator as per chapter 6 of this document and leave the door open to prevent any humidification or odour formation.

## Product support

Help is always at hand

## Help and assistance

If you require any technical guidance or find that your Built-In Refrigerator is not operating as intended, a simple solution can often be found in the **Troubleshooting** section of these instructions or online at [www.argos-support.co.uk](http://www.argos-support.co.uk)

If you still require further assistance, call one of our experts on **0345 257 7271\***. To help give us give you a fast and efficient service please have the following information ready:

Model Ref.	<input type="text"/>	You can find these on the rating plate - a small information panel (usually a sticker or metal plate) on the rear of your appliance
Serial number	<input type="text"/>	
Date of purchase	<input type="text"/>	This will be shown on your receipt

Local call rates applies\*

Lines open 8am-7pm Monday to Saturday and 10am-4pm Sunday.

\*Calls to Argos enquiry lines may attract a charge and set up fee from residential lines depending on your call plan/tariff . Mobile and other providers costs may vary, see [www.bt.com/pricing](http://www.bt.com/pricing) for details.

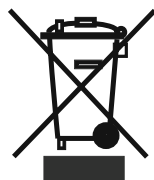
For Security and training purposes, telephone calls to and from customer service centres maybe recorded and monitored. Calls from Republic of Ireland will attract international call charges.

## Product support

Help is always at hand

## Disposal

- The symbol on the product or on its packaging indicates that this product may not be treated as household waste. Instead it shall be handed over to the applicable collection point for the recycling of electrical and electronic equipment.
- By ensuring this product is disposed of correctly, you will help prevent potential negative consequences for the environment and human health, which could otherwise be caused by inappropriate waste handling of this product.
- For more detailed information about recycling of this product, please contact your local city office, your household waste disposal service or the shop where you purchased the product.



## Product support

Help is always at hand

## Guarantee

# BUSH

Call us now and activate your 12 month guarantee

Thank you for choosing Bush. Your new product is guaranteed against faults and breakdowns for 12 months. Don't forget to register it with us today so we can provide you with our best possible after-sales service and useful updates.

[www.bushregistration.co.uk](http://www.bushregistration.co.uk)

FREEPHONE\*

0800 597 8548

Lines are open 8am - 8pm, 365 days a year. \*Calls may be recorded and monitored.

## Your Bush Guarantee

This product is guaranteed for twelve months from the date of original purchase. Any defect that arises due to faulty materials or workmanship will be repaired free of charge (or if applicable the product will be replaced or the purchase price refunded) where possible during this period by the dealer from who your purchased the unit.

The guarantee is subject to the following provisions:

- The guarantee does not cover accidental damage, misuse, cabinet parts, knobs or consumable items.
- The product must be correctly installed and operated in accordance with the instructions contained in the manual.
- It must be used solely for domestic purposes. The guarantee will be rendered invalid if the product is re-sold or has been damaged by inexpert repair.
- Specifications are subject to change without notice.
- Bush disclaim any liability for loss or damage arising from the breakdown of the product.
- This guarantee is in addition to and does not diminish your statutory or legal rights.

## Important Data Protection Information

If you provide us with information about another person, you confirm that they have appointed you to act for them, to consent to the processing of their personal data including sensitive personal data and that you have informed them of our identity and the purposes (as set out in the Important Data Privacy notice displayed overleaf) for which their personal data will be processed.

You are entitled to ask for a copy of the information we hold about you (for which we may charge a small fee) and to have any inaccuracies in your information corrected.

For quality control and training purposes, we may monitor or record your communications with us.

If your personal details change, if you change your mind about any of your marketing preferences or if you have any queries about how we use your information, please let us know by contacting our Data Protection Officer, Domestic & General, Leicester House 17 Leicester Street, Bedworth, Warwickshire CV12 8JP.

Guarantor: Argos Limited - 489 - 499 Avebury Blvd. - Milton Keynes - MK9 2NW

or online at [www.argos-support.co.uk](http://www.argos-support.co.uk) If you still require further assistance, call one of our experts on 0345 257 7271.

# BUSH

**Contact:**

[www.argos-support.co.uk](http://www.argos-support.co.uk)

Helpline: 0345 257 7271

52205761