



# *BaByliss* FOR *men*®



## PRECISION BEARD TRIMMER

Model 7050AU





# *BaByliss* for *men*®

## PRECISION BEARD TRIMMER

The BaByliss For Men Precision Beard Trimmer is compact and easy to use. Detachable diamond sharpened stainless steel blades for extreme sharpness and precision, with a 5-position trimmer guide for a variety of lengths. Complete with a range of grooming accessories and a convenient storage stand.

### FEATURES

- Battery operated trimmer (2 x AA batteries included).
- 5-position trimmer guide (grades 1-5).
- Detachable blades.
- Moustache comb.
- Cleaning brush.
- Lubricating oil.
- Storage stand.


### SAFETY CAUTIONS

- This appliance should only be used as described within this instruction book. Please retain for reference.

### IMPORTANT CHILD SAFETY

**WARNING!** Polythene bags over the product or packaging may be dangerous. To avoid danger of suffocation, keep away from babies and children. These bags are not toys.

### IMPORTANT SAFETY

- Do not immerse the appliance in water or other liquids. 
- Always inspect the appliance before use for noticeable





signs of damage. Do not use if damaged or if the appliance has been dropped. In the event of damage contact the Conair Customer Care Centre (refer to 'UK Guarantee' section for further information).

- Only use the attachments supplied with this appliance.
- Do not leave the appliance unattended when switched on.
- Do not place the appliance on any surface whilst in operation.
- Special care is required when using the appliance close to the ears, eyes and face.
- This appliance should not be used by adults whose reduced physical, sensory or mental capabilities, or whose lack of experience and knowledge, might cause a hazard, unless they have been correctly instructed to understand the safe use and hazards involved and are adequately supervised.
- Careful adult supervision is required when this appliance is used on or near children. Do not use on very young children.
- This appliance should not be used, cleaned or maintained by children. Keep out of reach of children.
- Always ensure that this appliance is kept out of the reach of children at all times, particularly during use and whilst cooling.
- Allow the appliance to cool before storing away.
- This product complies fully with all appropriate EU and UK Legislation and the Standards relevant to this type and class of appliance. We are an ISO9001:2015 Certified company that continually evaluates our Quality





Management System performance. If you have any queries regarding product safety and compliance, please contact the Conair Customer Care Line (refer to «UK After Sales Service» section)..

- The battery should be removed for safe disposal at the end of its life.
- When the battery has run down, it should be disposed of at a recycling centre to safeguard the environment. If the battery leaks, avoid touching it and dispose of it at a recycling centre.

## INSTRUCTIONS FOR USE

### Preparation For Use

- Prior to initial use, test the trimmer on a small area of arm or leg hair. If any signs of allergic reaction or sensitivity occur, discontinue use. Do not use on very sensitive or irritated skin.
- Always inspect the appliance before use for noticeable signs of damage. Do not use if damaged.
- Ensure the trimming heads are free from hair and debris (refer to the Cleaning & Maintenance section for further information).

### Inserting the Batteries

The trimmer requires 2 x AA batteries. To insert or replace the batteries, remove the battery compartment cover by firmly pushing down on the casing. Insert the batteries as indicated on the inside of the battery compartment. Replace the casing by sliding it back into the main trimmer unit until it clicks into place. If the appliance remains unused for a while or if the batteries have run down, remove them from the appliance. Do not mix old and new batteries. Do not mix alkaline, standard (Carbon-Zinc), or rechargeable (Nickel cadmium or NickelMetal Hybride) batteries.





## Trimmer Guide

### To attach the trimmer guide

- Ensure the appliance is switched off.
- Position the grooves on the inner sides of the trimmer guide over the corresponding notches on either side of the cutting head.
- Slide the trimmer guide downwards over the cutters until it will go no further.

### To adjust the trimmer guide

- The marking on the handle should be aligned with the desired grade number indicated on the trimmer guide.

Grade 1 - 3mm

Grade 2 - 6mm

Grade 3 - 9mm

Grade 4 - 12mm

Grade 5 - 15mm

- Push the rear of the trimmer guide upwards with your thumb until it clicks into position, and the marking on the handle is aligned with the required grade number on the trimmer guide.
- Use the longest setting at first, until you become familiar with the adjustment. If you want a shorter cut, you can adjust the comb to a shorter position and go over the hair again until you achieve the desired length.

### To remove the trimmer guide

- Switch the appliance off.
- Push the base of the trimmer guide upwards until it comes away from the cutting head.

### For best performance:

- Use on clean, dry hair that has been combed until tangle-free.





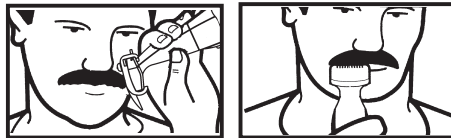
### To outline:

- Comb the hair to be trimmed in the direction of growth.
- Do not attach the guide.
- Switch the appliance on.
- Hold the trimmer upside down and, holding it gently against the skin at the required position, move away from the hair.
- Having defined the outline, hold the trimmer against the skin, the teeth of the trimmer pointing upwards yet flat against the skin, and move the trimmer against the direction of hair growth from the opposite direction of the defined outline.



### To trim the beard:

- Attach the trimmer guide and select the grade required. If using more than one grade, start with the longer grade first.
- Switch the appliance on.
- Hold the trimmer against the hair, the teeth of the trimmer guide pointing upwards yet flat against the face.
- Move the trimmer upwards and outwards through the beard, a little at a time, against the direction of hair growth.
- The trimmer will work most efficiently when cutting through hair at its own speed. Never force the trimmer.
- Never switch the trimmer off whilst in the beard.



### To trim the moustache:

- Attach the trimmer guide and select the grade required.
- Switch the appliance on.
- Hold the trimmer against the moustache; the teeth of the trimmer





- guide pointing upwards yet flat against the face.
- Move the trimmer upwards through the moustache, a little at a time, against the direction of hair growth.
  - Once the moustache is trimmed to the desired length, remove the trimmer guide.
  - Define the outline of the bottom of the moustache.

## CLEANING & MAINTENANCE

To maintain optimum performance, the appliance should be cleaned after each use:

- Remove the comb guide after use. Rinse the comb guide under running water and dry thoroughly before storage or use.
- The cutting head of the trimmer is detachable for easy cleaning. Hold the trimmer pointing away from you with the cutters pointing upwards. Position your thumb underneath the cutter and push upwards to take the cutting head off.
- Using the cleaning brush remove any remaining hair from the trimmer blades.
- To replace the cutting head, align the lug on the rear of the head with the corresponding groove on the back of the trimmer, and snap down into place.
- When used regularly the trimmer blades will not need to be oiled. However, if the appliance has not been used for a prolonged period of time it is advised to oil the blades before use. After cleaning, switch the appliance on and oil the blades using a few drops of the lubricating oil supplied. Only use the lubricating oil supplied with the appliance as this is specifically formulated and does not evaporate or slow the blades.



## SAFE DISPOSAL

To minimise hazards to health and the environment at the end of this product's life, laws dealing with Waste Electrical and Electronic Equipment (WEEE) and The Waste Battery Directive require you to dispose of these products and their batteries at a suitable collection facility where they will be sent for appropriate recycling. Please contact your local authorities for more details on recycling and safe disposal of these in your area.





## **UK GUARANTEE**

This BaByliss for Men appliance is guaranteed for consumer use for 3 years.

This 3 year guarantee will cover defects found due to faulty workmanship or material. Proof of purchase is required to validate the guarantee. The guarantee will be void if the damage has been caused by a fall, alteration or repair by any unauthorised persons. If the appliance does not perform satisfactorily due to defects in materials or manufacture, it will be repaired or replaced through Conair UK After Sales Service. The Conair Group Ltd reserves the right to amend terms and specifications without prior notice.

This guarantee in no way affects your statutory rights.

## **UK AFTER SALES SERVICE**

For further advice on using the appliance or should you need to return your product, please contact the Conair Customer Care Line on 03705 133191 (09:00 to 17:00 Monday to Friday) or email your enquiry to [ukinfo@conair.com](mailto:ukinfo@conair.com).

The return address is:

Customer Care Centre  
Conair Logistics  
Unit 4  
Revolution Park  
Buckshaw Avenue  
Buckshaw Village  
Chorley  
PR7 7DW

Please enclose your returns number, name and address details, together with a copy of proof of purchase and details of the fault.

IB-17/055

