

# SPOTLIFTER

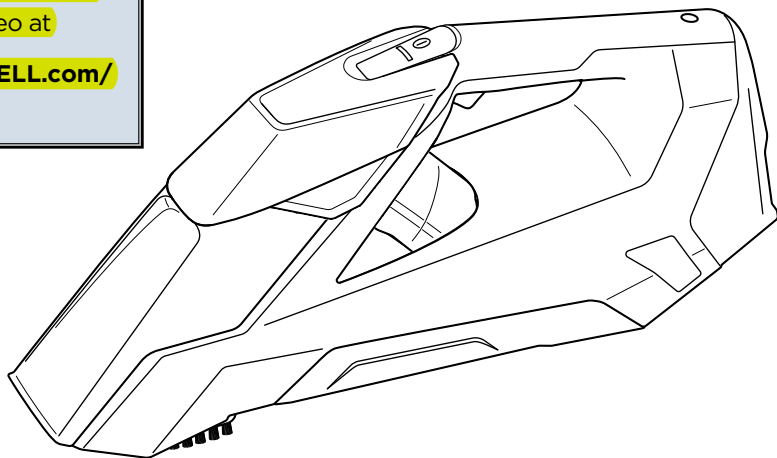
---

USER GUIDE  
2005 SERIES



More of a video person? Look for this icon and go online for an instructional how-to video at

[www.BISSELL.com/videos](http://www.BISSELL.com/videos)



# IMPORTANT SAFETY INSTRUCTIONS

## READ ALL INSTRUCTIONS BEFORE USING YOUR CLEANER.

When using an electrical appliance, basic precautions should be observed, including the following.

## WARNING

**TO REDUCE THE RISK OF FIRE, ELECTRIC SHOCK, OR INJURY:**

- » This appliance can be used by persons with reduced physical, sensory or mental capabilities or lack of experience and knowledge if they have been given supervision or instruction concerning use of the appliance in a safe way and understand the hazards involved.
- » Children shall not play with the appliance. Cleaning and user maintenance shall not be made by children without supervision.
- » If the charger supply cable is damaged, it must be replaced by the manufacturer, its service agent or similarly qualified persons in order to avoid a hazard.
- » The appliance is not to be used if it has been dropped, if there are visible signs of damage or if it is leaking.
- » Keep the appliance out of reach of children when it is energized or cooling down.
- » Liquid must not be directed towards equipment containing electrical components.
- » Remove from charger and turn off all controls before cleaning, maintaining or servicing the appliance.
- » For the purpose of recharging the battery, only use the detachable power supply unit provided with this appliance.
- » The battery must be removed from the appliance before it is scrapped.
- » The appliance must be disconnected from the supply mains when removing the battery.
- » The battery is to be disposed of safely.

## SAVE THESE INSTRUCTIONS




**FOR CHARGING ON A 220-240 VOLT A.C. 50/60 Hz POWER SUPPLY ONLY.**

This model is for household use only.

- » Use only the type and amount of liquids specified under the Operations section of this guide.
- » Unplug from electrical socket when not charging.
- » Always connect to a proper electrical socket.
- » Do not allow to be used as a toy.
- » Use only as described in the user guide.
- » Use only manufacturer's recommended attachments.
- » Do not use with damaged cable or plug for charger.
- » Do not immerse in water or liquid.
- » If appliance is not working as it should, has been dropped, damaged, left outdoors, or dropped into water; do not attempt to operate it and have it repaired at an authorized service center.
- » Do not pull or carry charger by cable.
- » Keep charger away from heated surfaces.
- » Do not unplug charger by pulling on cable.
- » To unplug, grasp the plug, not the cable.
- » Do not handle charger plug or appliance with wet hands.
- » Do not put any object into openings.
- » Do not use with any opening blocked; keep free of dust, lint, hair, and anything that may reduce air flow.
- » Use extra care when cleaning on stairs.
- » Turn off all controls before charging.
- » Do not use to pick up flammable or combustible liquids, such as petrol, or use in areas where they may be present.
- » Do not pick up toxic material (chlorine bleach, ammonia, drain cleaner, etc.).
- » Do not pick up anything that is burning or smoking, such as cigarettes, matches, or hot ashes.
- » Do not use appliance in an enclosed space filled with vapors given off by oil base paint, some mothproofing substances, flammable dust, or other explosive or toxic vapors.
- » Do not pick up hard or sharp objects such as glass, nails, screws, coins, etc.
- » Do not use without collection tank in place.
- » Keep the temperature range of between 0-40°C/ 0-104°F when charging battery, storing unit or during use.
- » Ensure to use the appropriate charger by series. For all UK models, reference charger series SSA-100060UK.

## WARNING

**FOR SAFE OPERATION AND BATTERY REMOVAL AND TO REDUCE THE RISK OF INJURY, USER MUST READ AND UNDERSTAND USER GUIDE. STORE INDOORS.**

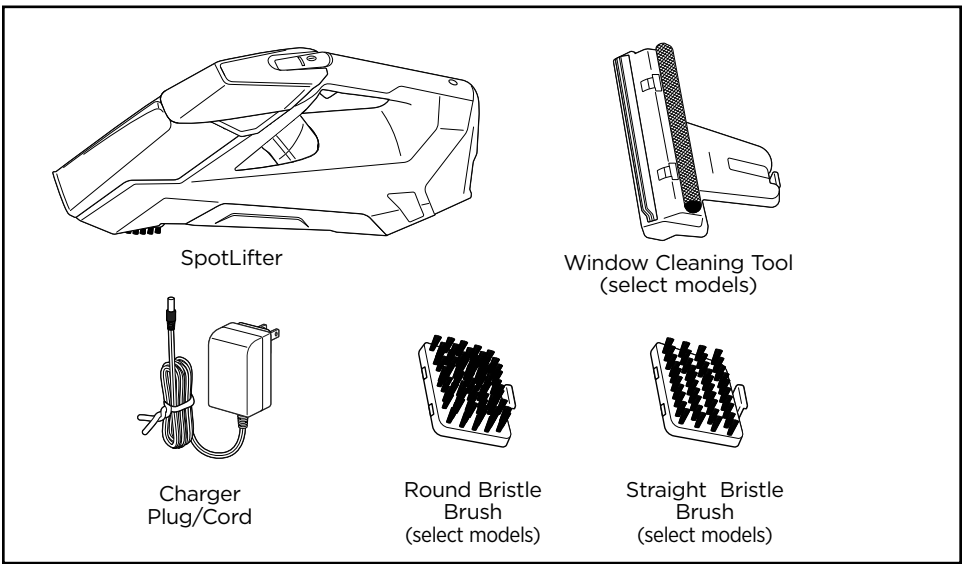
	<b>WARNING</b>	RISK OF FIRE, ELECTRIC SHOCK, OR INJURY.
	<b>GUIDE</b>	READ USER GUIDE FOR COMPLETE SAFETY AND USER INSTRUCTIONS.
	<b>WEEE</b>	DO NOT THROW THE APPLIANCE AWAY WITH THE NORMAL HOUSEHOLD WASTE AT THE END OF ITS LIFE, BUT HAND IT IN AT AN OFFICIAL COLLECTION POINT FOR RECYCLING. BY DOING THIS YOU WILL HELP TO PRESERVE THE ENVIRONMENT.


# Thanks for buying a BISSELL portable deep cleaner!

We love to clean and we're excited to share one of our innovative products with you. We want to make sure your portable deep cleaner works as well in two years as it does today, so this guide has tips on using (pages 5-9), maintaining (pages 10-13), and if there is a problem, troubleshooting (page 14).

In just a few simple assembly steps, you'll be ready to spot clean. Flip to page 5 and let's get started!

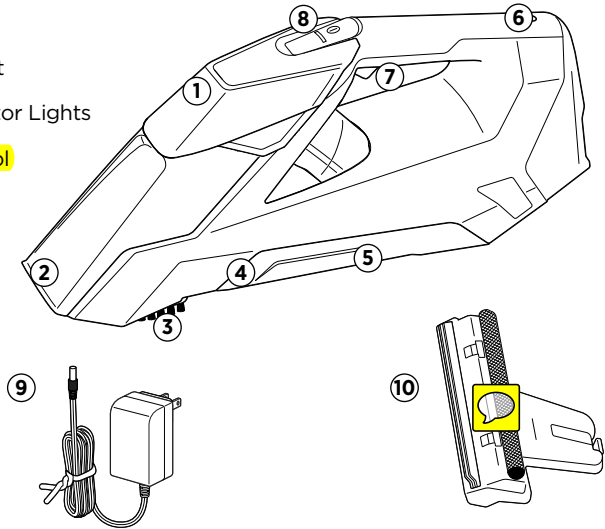
## What's In The Box?



Safety Instructions.....	2	Troubleshooting .....	14
Product View.....	4	<b>Warranty .....</b>	<b>15</b>
Cleaning Formula.....	4	Service.....	15
Operations .....	5-9	Product  gistration.....	16
Maintenance & Care .....	10-13	Consumer Care.....	16

# Product View

1. Formula and Clean Water Tank
2. Removable Nozzle
3. Scrubbing Brush
4. Tank Release Latch
5. Collection Tank
6. Battery Charging Port
7. Spray Trigger
8. Battery Status Indicator Lights
9. Charger Plug/Cord
10. Window Cleaning Tool (select models)



# Cleaning Formula



BISSELL  
Oxy Boost  
formula for  
carpet &  
upholstery



BISSELL  
Renew Boost  
formula for  
carpet &  
upholstery



BISSELL  
Prevent Boost  
formula for  
carpet &  
upholstery



BISSELL 2X  
Portable Machine  
Spot & Stain  
Formula

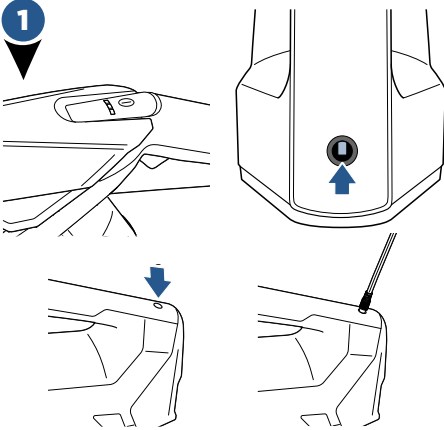


BISSELL 2X  
Portable Machine  
Pet Stain & Odor  
Formula

Keep plenty of genuine BISSELL Spot & Stain Cleaner formula for portable spot cleaning machines on hand so you can clean whenever it fits your schedule. Always use genuine BISSELL cleaning formulas. Non-BISSELL cleaning solutions may harm the machine and may void the warranty.

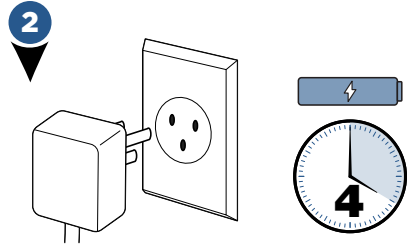
**NOTICE:** Use only BISSELL portable machine formula (with Boost if desired) in your cleaner. Use of cleaning formulas which contain lemon or pine oil may damage this appliance and void the warranty. Chemical spot cleaners or solvent-based soil removers also should not be used. These products may react with the plastic materials used in your cleaner, causing cracking or pitting.

# Charging the Battery



Before charging, make sure unit is OFF by ensuring the battery status indicator lights are not illuminated. Insert the charging adapter plug into the charging port on the handle near the base of the unit.

**NOTE:** There is a door covering the charging port that will automatically slide out of the way when the charging adapter is inserted.



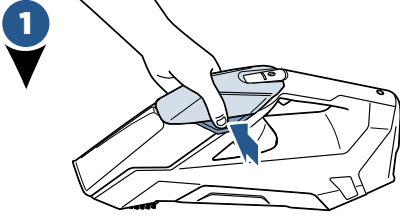
Plug the adapter into a suitable wall outlet. The battery status indicator lights will illuminate when charging.

**Charge the unit completely for 4 hours prior to first use.**

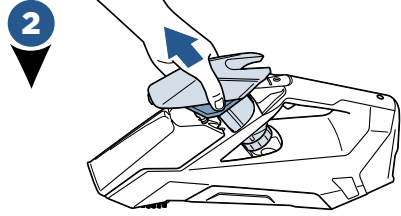
**NOTE:** Make sure your unit is fully charged before using it. To check the battery status, turn the machine ON by pressing the power button on the handle. Battery is fully charged when all three of the blue status lights are illuminated. See chart below.

# Charging Light Display Status

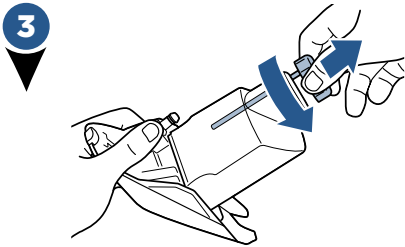
# Filling the Solution Tank



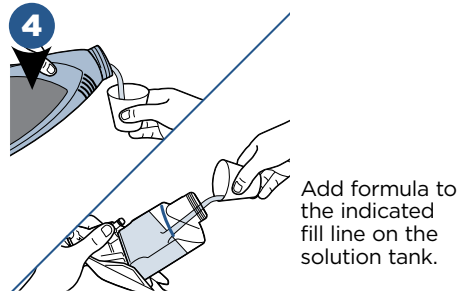
1 Remove solution tank by grasping it firmly and pinching sides of tank.



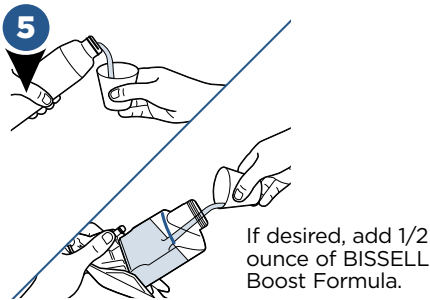
2 Pull up at a straight angle to remove the tank from the unit.



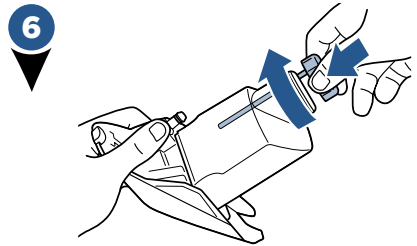
3 Twist and remove the cap to the tank.



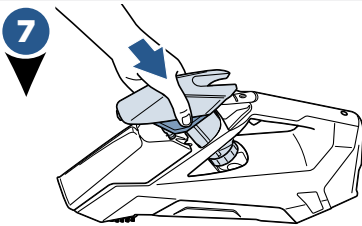
4 Add formula to the indicated fill line on the solution tank.



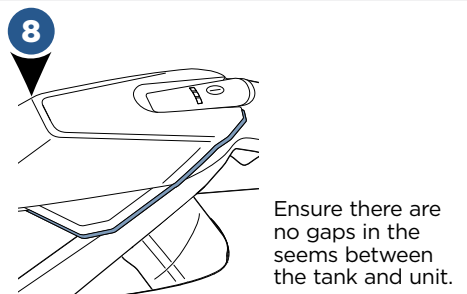
5 If desired, add 1/2 ounce of BISSELL Boost Formula.



6 Twist to replace the cap on the tank.



7 Return the tank to the unit making sure it is fully seated.



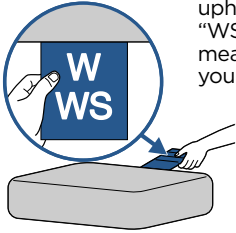
8 Ensure there are no gaps in the seams between the tank and unit.

# Pre-Treating

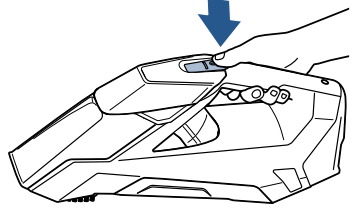
**IMPORTANT:** Check the manufacturer's tag before cleaning upholstery. "W" or "WS" on the tag means you can use your SpotLifter. If tag is coded with an "S" (with diagonal strike-through), or says "Dry Clean Only," do not proceed. If manufacturer's tag is missing or not coded, check with your furniture dealer.

1

Check the manufacturer's tag before cleaning upholstery. "W" or "WS" on the tag means you can use your SpotLifter.

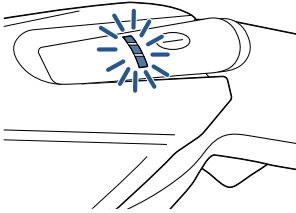


2



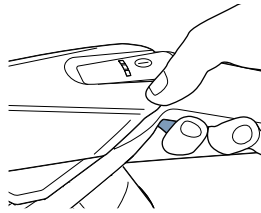
Push power button to turn the unit ON.

3



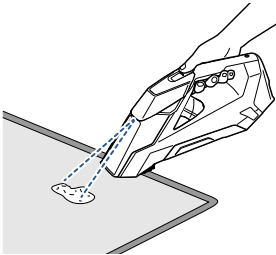
Battery status lights will illuminate to show how much battery remains.

4



To pre-treat stained or highly soiled areas, hold the unit above soiled surface and press the spray trigger.

5



Spray the cleaning solution on the stain until the entire area is saturated.

6



Let cleaning solution set for 5 minutes before cleaning.

# Spot Cleaning Carpet & Upholstery

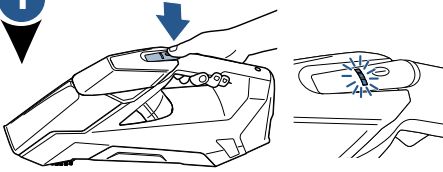
## WARNING

Keep spray away from face. Failure to do so may result in personal injury.

## WARNING

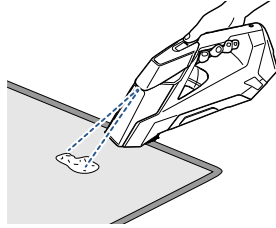
If unit stops spraying, push power button to turn unit OFF and check cleaning solution level. Refill if needed. Never run dry.

1



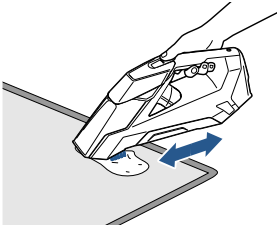
Push power button to turn the unit ON. Battery status lights will illuminate to show how much battery remains.

2



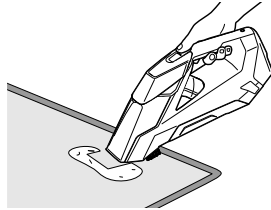
Hold the unit above soiled surface and press the trigger to spray cleaning solution.

3



For stubborn spots, use brush to gently scrub soiled area while continuing to spray cleaning solution.

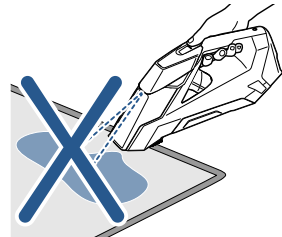
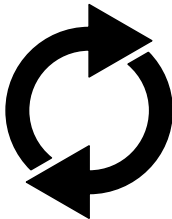
4



Press front of unit firmly against surface and pull toward you to remove cleaning solution. Be sure to release the trigger for optimal suction.

5

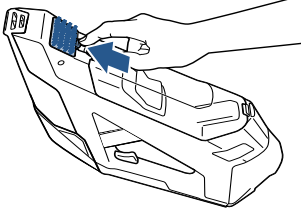
Repeat steps 2 and 4 until no more dirt or cleaning solution can be removed. Do not overwet.





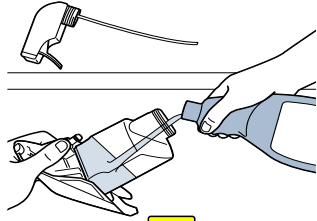
# Window Cleaning (select models)

1



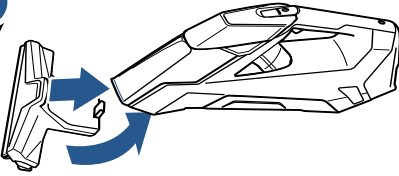
Remove scrubbing brush by pushing tab up and pulling gently.

2



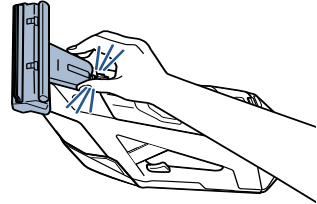
Fill solution tank with standard window cleaning solution.

3



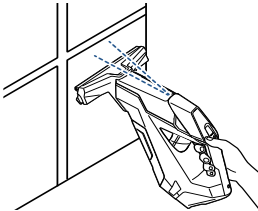
Attach window cleaning tool by first securing on nozzle.

4



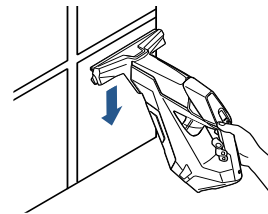
Then rotate window cleaner until it clicks into place.

5



Hold machine in vertical position in front of window and press spray trigger to spray window cleaning solution onto window. Release spray trigger and use the window tool sponge to gently scrub.

6



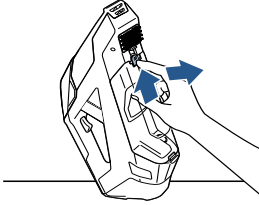
Release the spray trigger and engage squeegee to squeegee cleaning formula from window. Clean with complete vertical strokes and work across entire window.

# Empty Dirty Water Tank

## WARNING

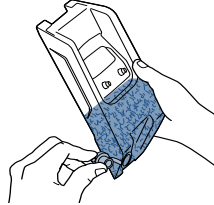
To reduce the risk of fire, electric shock or injury, turn power OFF and disconnect plug from electrical outlet before performing maintenance or troubleshooting.

1



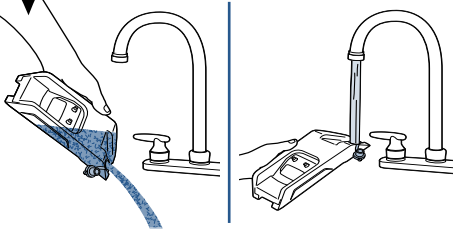
Ensure the unit is OFF. Tilt unit and set it upright on the base on a flat surface. Simply push up on the latch located on the top of the tank to release.

2



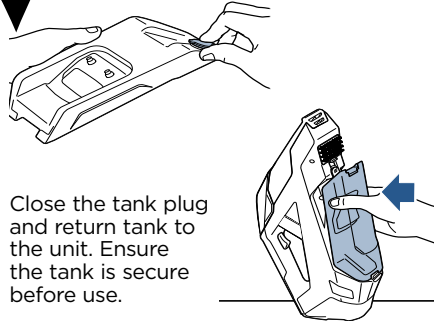
Carefully remove the dirty water tank from the unit and carry to a sink. To empty, pull tab at the end of the tank and empty to remove the dirty water.

3



Rinse out the dirty tank with clean water after emptying.

4



Close the tank plug and return tank to the unit. Ensure the tank is secure before use.

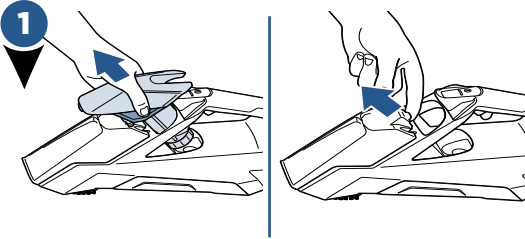
**NOTICE:** Do not store unit with water in the clean or dirty water tank. Ensure both tanks are empty prior to storing the machine.



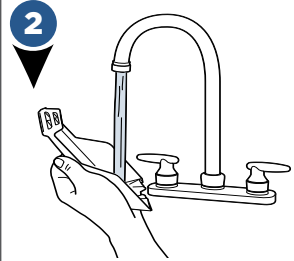
# Clean the Nozzle

## **⚠️ WARNING**

To reduce the risk of fire, electric shock or injury, turn power OFF and disconnect plug from electrical outlet before performing maintenance or troubleshooting.



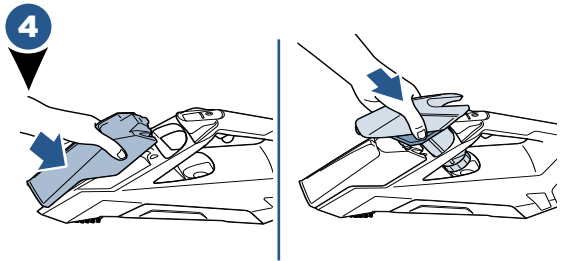
The front nozzle of the unit removes for easy cleaning of dirt and debris. Remove the clean water tank and locate the latch at the top of the nozzle. Press tab and rotate back to separate from unit.



Rinse nozzle with clean water and check spray nozzle for dirt or debris.



If necessary, wipe with a clean cloth or soft bristle brush.



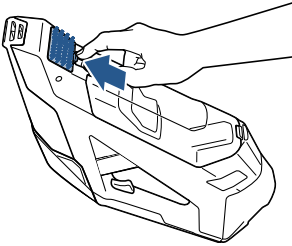
Replace the front nozzle by hooking lower edge onto unit and snapping into place. Then place the clean tank back on the unit.

# Clean the Brush

## **⚠️ WARNING**

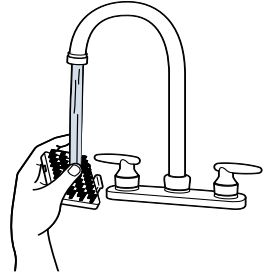
To reduce the risk of fire, electric shock or injury, turn power OFF and disconnect plug from electrical outlet before performing maintenance or troubleshooting.

1



Ensure your unit is OFF. Tilt unit and set it upright on the base on a flat surface. Remove scrubbing brush by lifting up tab and pulling gently to release.

2



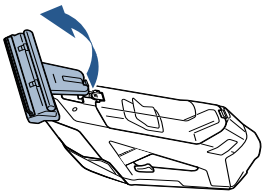
Rinse brush with clean water and check brush for debris. Once cleaned, insert brush by aligning the top of the brush into the unit and snap into place. Ensure it is secure before using.

# Clean the Window Tool (select models)

## **⚠️ WARNING**

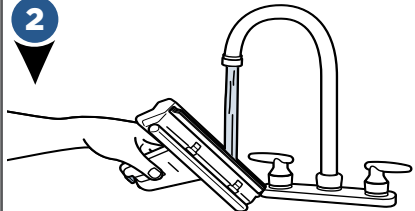
To reduce the risk of fire, electric shock or injury, turn power OFF and disconnect plug from electrical outlet before performing maintenance or troubleshooting.

1



Remove window cleaning tool by pushing the tab upward on the back of the unit and pulling gently.

2



Rinse tool under water and let air dry.

# Disposal of Batteries


## **WARNING**

This product contains Lithium Ion rechargeable batteries. According to Federal and State regulations, removal and proper disposal of Lithium Ion batteries is required. For removal of the batteries in your SpotLifter, see instructions on this page.



**NOTICE:** Disconnecting the battery will destroy the appliance and invalidate the warranty.



- Unplug the charger. 
- Remove hand vac from unit and remove dirt cup from handle.
- Remove (2) Phillips head screws and remove the lens from the hand vacuum.
- Remove (2) Phillips head screws from the hand vacuum cover.
- Lift off the hand vacuum cover and take out the push rod.
- Remove (5) Phillips head screws from the side of the hand vacuum.
- Remove the entire battery assembly from the cover.
- Cut wires from the PCB and wrap the wire ends with insulation tape.
- Keep Battery Pack together - DO NOT separate individual batteries. For specific disposal instructions of batteries, please contact RBRC (Rechargeable Battery Recycling Corporation) 1-800-822-8837 or visit [www.rbrc.com](http://www.rbrc.com).
- Discard remainder of product.

# Troubleshooting

## WARNING

To reduce the risk of electric shock, turn power switch off and disconnect plug from electrical outlet before performing maintenance or troubleshooting checks.

Problem	Possible causes	Remedies
<b>Reduced suction or no suction</b>	Collection/dirty tank is full	Empty collection/dirty tank
	Collection/dirty tank drain plug is loose	Check plug for snug fit
	Batteries weak/undercharged	Recharge according to instructions
	Collection/dirty tank not properly installed	Snap tank into place
<b>Reduced spray or no spray</b>	Solution/clean tank is empty	Refill solution/clean tank
	Pump not primed	While the unit is turned on, press spray trigger and gently rock SpotLifter back and forth
	Batteries weak/undercharged	Recharge according to instructions
	Spray tip clogged	Rinse tip with clean water
	Clean tank not fully inserted	Ensure clean tank is securely seated by removing and then replacing
<b>Unit is not powered or underpowered</b>	Charger plug/cord not connected	Make sure charger plug is completely plugged into wall outlet and charging cord is completely plugged into port on back of unit. Make sure the unit is stored with power switch in "O" (OFF) position
	Collection tank drain plug is loose	Check plug for snug fit
<b>Unit will not charge</b>	Charger plug/cord not connected	Make sure charger plug is completely plugged into wall outlet and charging cord is completely plugged into port on back of unit. Make sure the unit is stored with power switch in "O" (OFF) position
	Batteries have charging resistance	To recharge, first completely exhaust the battery, recharge it, then exhaust it once again before recharging a second time. This procedure may be required more than once

**Please do not return this product to the store.**

Other maintenance or service not included in the manual should be performed by an authorized service representative.

Thank you for selecting a BISSELL product.

**For any questions  concerns, BISSELL is happy to be of service. Contact us directly at 1-800-237-7691.**

# Warranty

This warranty gives you specific legal rights, and you may also have other rights which may vary from state to state. If you need additional instruction regarding this warranty or have questions regarding what it may cover, please contact BISSELL Consumer Care by e-mail or telephone as described below.

## Limited Two-Year Warranty

Subject to the \*EXCEPTIONS AND EXCLUSIONS identified below, upon receipt of the product BISSELL will repair or replace (with new or remanufactured components or products), at BISSELL's option, free of charge from the date of purchase by the original purchaser, for two years any defective or malfunctioning part.

See information below on "If your BISSELL product should require service".

This warranty applies to product used for personal, and not commercial or rental service. This warranty does not apply to fans or routine maintenance components such as filters, belts, or brushes. Damage or malfunction caused by negligence, abuse, neglect, unauthorized repair, or any other use not in accordance with the User's Guide is not covered.

BISSELL IS NOT LIABLE FOR INCIDENTAL OR CONSEQUENTIAL DAMAGES OF ANY NATURE ASSOCIATED WITH THE USE OF THIS PRODUCT. BISSELL'S LIABILITY WILL NOT EXCEED THE PURCHASE PRICE OF THE PRODUCT.

**Some states do not allow the exclusion or limitation of incidental or consequential damages, so the above limitation or exclusion may not apply to you.**

## \*EXCEPTIONS AND EXCLUSIONS FROM THE TERMS OF THE LIMITED WARRANTY

THIS WARRANTY IS EXCLUSIVE AND IN LIEU OF ANY OTHER WARRANTIES EITHER ORAL OR WRITTEN. ANY IMPLIED WARRANTIES WHICH MAY ARISE BY OPERATION OF LAW, INCLUDING THE IMPLIED WARRANTIES OF MERCHANTABILITY AND FITNESS FOR A PARTICULAR PURPOSE, ARE LIMITED TO THE FIVE YEAR DURATION FROM THE DATE OF PURCHASE AS DESCRIBED ABOVE.

Some states do not allow limitations on how long an implied warranty lasts so the above limitation may not apply to you.

**NOTE:** Please keep your original sales receipt. It provides proof of date of purchase in the event of a warranty claim.

# Service

## If your BISSELL product should require service:

Contact BISSELL Consumer Care to locate a BISSELL Authorized Service Center in your area.

If you need information about repairs or replacement parts, or if you have questions about your warranty, contact BISSELL Consumer Care.

### Website:

[www.BISSELL.com](http://www.BISSELL.com)

### E-mail:

[www.BISSELL.com/email-us](mailto:www.BISSELL.com/email-us)

### Call:

BISSELL Consumer Care

1-800-237-7691

Monday - Friday 8am - 10pm ET

Saturday 9am - 8pm ET

Sunday 10am - 7pm ET

## Please do not return this product to the store.

Other maintenance or service not included in the manual should be performed by an authorized service representative.

For any questions or concerns, BISSELL is happy to be of service. Contact us directly at 1-800-237-7691.

# Register your product today!

Registering is quick, easy and offers you benefits over the lifetime of your product.

**You'll receive:**



## **BISSELL Rewards Points**

Automatically earn points for discounts and free shipping on future purchases.

## **Faster Service**

Supplying your information now saves you time should you need to contact us with questions regarding your product.

## **Product Support Reminders and Alerts**

We'll contact you with any important product maintenance reminders and alerts.

## **Special Promotions**

Optional: Register your email to receive notice of offers, contests, cleaning tips and more!

**Visit [www.BISSELL.com/registration](http://www.BISSELL.com/registration)!**

## **Visit the BISSELL website: [www.BISSELL.com](http://www.BISSELL.com)**

When contacting BISSELL, have model number of cleaner available.

Please record your Model Number: \_\_\_\_\_

Please record your Purchase Date: \_\_\_\_\_

**NOTE: Please keep your original sales receipt. It provides proof of purchase date in the event of a warranty claim. See Warranty on page 15 for details.**

**For cleaning tips and more visit [www.BISSELL.com](http://www.BISSELL.com) or find us at:**



BISSELL



BISSELLClean



BISSELLClean



BISSELL



BISSELL

*We can't wait to hear from you!*

Rate this product and let us (and millions of your closest friends) know what you think!

**[www.BISSELL.com](http://www.BISSELL.com)**



©2017 BISSELL Homecare, Inc.  
Grand Rapids, Michigan  
All rights reserved. Printed in China  
Part Number 161-TBD 01/17 RevC  
Visit our website at: [www.BISSELL.com](http://www.BISSELL.com)