



Philips
Headphones

8.6mm drivers/closed-back
In-ear

SHE3700BL



Big beats, pumping bass

Compact design with vacuum metalized protection

Ultra small, big bass Philips MyJam Vibes in-ear headphones feature oval tube inserts for comfort and vacuum metalized coating for sleek looks with extra protection.

Revel in quality sound

- Big bass and clear sound through efficient drivers
- A perfect in-ear seal blocks out external noise

Listen for longer

- Oval sound tube insert provides an ergonomic comfort fit
- 3 interchangeable rubber ear caps offer an optimal fit
- Shiny, colorful coating looks sleek and also protects

Always ready to go

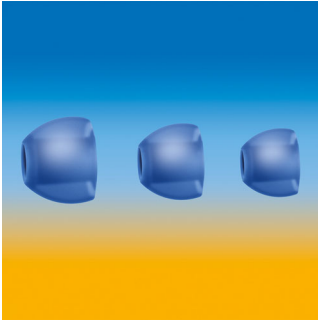
- Reinforced cable relief enhances durability and connectivity

PHILIPS

Headphones
8.6mm drivers/closed-back In-ear

Highlights

3 sizes of ear caps



Ear caps come in a choice of 3 sizes - small, medium and large - for a personalized and perfect fit

Colorful shiny coating



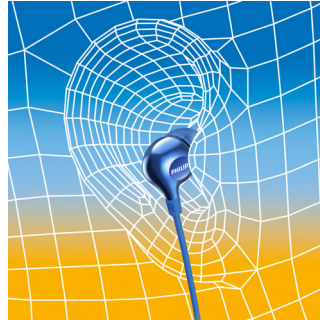
A high quality, glossy and colorful coating creates a sleek look while adding an extra protective surface.

Efficient drivers



Philips Vibes in-ear headphones house efficient drivers inside a compact design. They fit perfectly while pumping out clear sound and booming bass.

Oval sound tube



An oval sound tube insert provides ergonomic comfort to fit the true shape of the ear.

Perfect in-ear fit



Ultra small earphones fit perfectly inside the ear, creating a seal that blocks out external noise.

Reinforced cable relief

To extend the life of your headphones, a soft rubber relief between them and the cable protects the connection from damage through repeated bending.

SHE3700BL/00

Specifications

Accessories

- Eartips: Eartips: 3 sizes S, M, L

Design

- Color: Blue

Sound

- Acoustic system: Closed
- Voice coil: copper
- Frequency response: 11- 22 000 Hz
- Impedance: 16 ohm
- Maximum power input: 20 mW
- Sensitivity: 105 dB
- Speaker diameter: 8.6 mm
- Type: Dynamic
- Diaphragm: PET

Connectivity

- Cable Connection: two-parallel, symmetric
- Cable length: 1.2 m
- Connector: 3.5 mm
- Finishing of connector: chrome-plated
- Type of cable: copper

Inner Carton

- Gross weight: 0.13 kg
- GTIN: 2 69 25970 70912 9
- Inner carton (L x W x H): 18.1 x 8.1 x 6 cm
- Nett weight: 0.039 kg
- Number of consumer packagings: 3
- Tare weight: 0.091 kg

Outer Carton

- Gross weight: 1.161 kg
- GTIN: 1 69 25970 70912 2
- Outer carton (L x W x H): 37.4 x 17.4 x 13.9 cm
- Nett weight: 0.312 kg
- Number of consumer packagings: 24
- Tare weight: 0.849 kg

Packaging dimensions

- Packaging dimensions (W x H x D):
5 x 17.3 x 2.7 cm
- EAN: 69 25970 70912 5
- Gross weight: 0.03 kg
- Nett weight: 0.013 kg
- Number of products included: 1
- Packaging type: Blister
- Tare weight: 0.017 kg
- Type of shelf placement: Both



Issue date 2016-07-15

Version: 5.0.3

12 NC: 8670 001 34691
EAN: 69 25970 70912 5

© 2016 Koninklijke Philips N.V.
All Rights reserved.

Specifications are subject to change without notice.
Trademarks are the property of Koninklijke Philips N.V.
or their respective owners.

www.philips.com