

IMPORTANT, RETAIN FOR FUTURE REFERENCE AND
READ CAREFULLY. ASSEMBLY AND OPERATING
INSTRUCTIONS FOR CHICAGO WIDESCREEEN TV UNIT

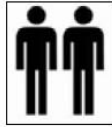
DESCRIPTION

ITEM NAME: CHICAGO WIDESCREEEN TV UNIT

ITEM NO:

30 mins

APPROXIMATE ASSEMBLY TIME



2 PERSONS ASSEMBLY

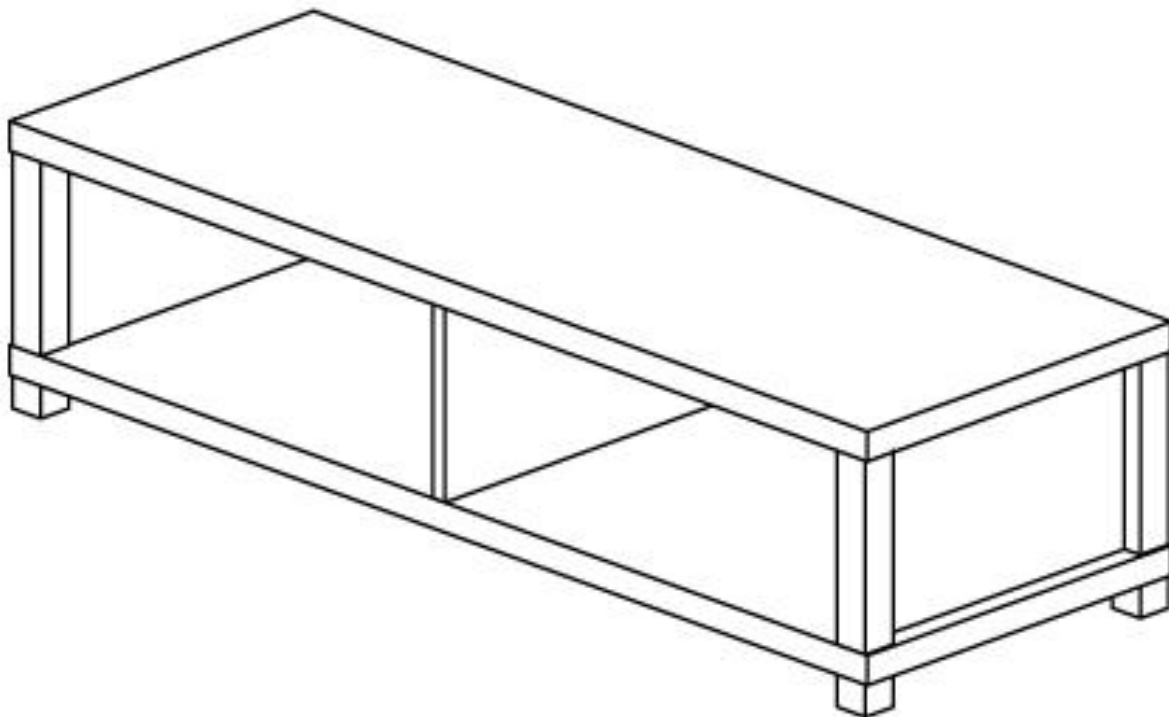
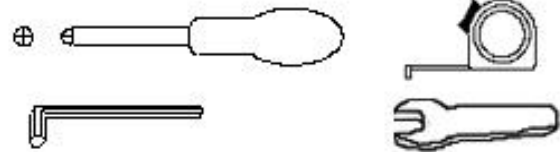
Floor Area
2.5 m x 2.5 m



Ceiling Heights
2.0 m

REQUIRED ASSEMBLY SPACE

REQUIRED ASSEMBLY TOOLS



ASSEMBLED CHICAGO WIDESCREEEN TV UNIT

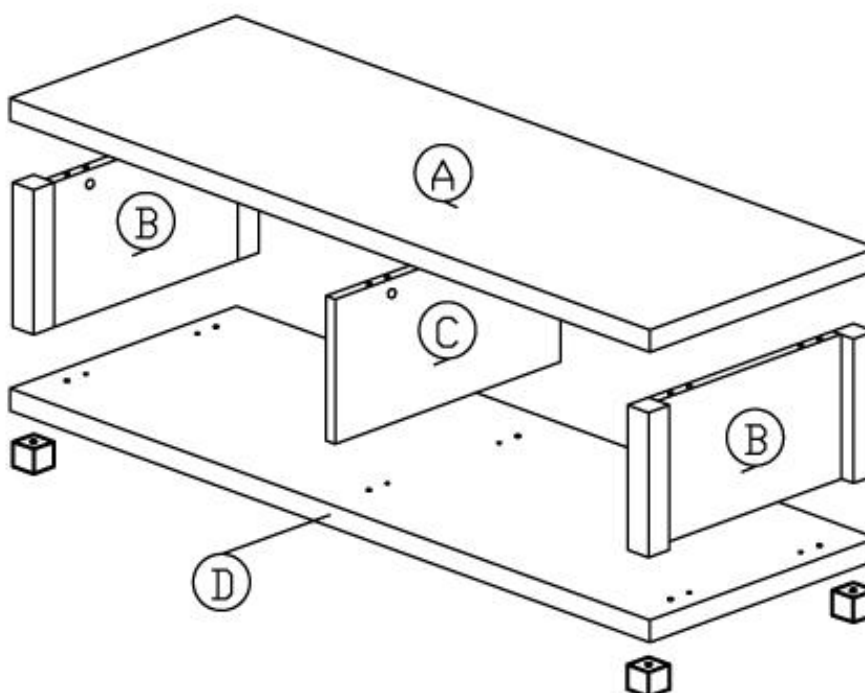
MOUNTROSE

MOUNTROSE LIMITED, ALAN HOUSE, ASHTON ROAD, BREDBURY, STOCKPORT. SK6 2QN UNITED KINGDOM




DESCRIPTION

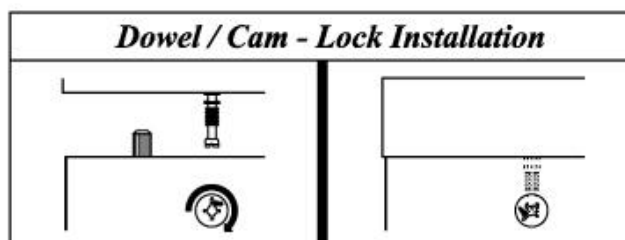
ITEM NAME: CHICAGO WIDESCREE TV UNIT
ITEM NO:

Parts List



Hardware List

<i>Hardware List</i>			
No.	SHAPE	DESCRIPTION	Qty.
1		8x25mm Wood Dowel	12Pcs
2		15MM Titus Minifix	6Sets
3		15mm Minifix Cap	6Pcs
4		M6x50mm Screw	4Pcs
5		M4x65mm Screw	6Pcs
6		L Key	1Pc
7		Furniture Square Gasket	4Pcs



DESCRIPTION

ITEM NAME: CHICAGO WIDESCREEN TV UNIT
ITEM NO:

1. Please check that all parts are present before you start the assembly of your furniture, as once assembled, the furniture is exempt from our home approval policy.
2. For ease and speed of assembly, we recommend that before you commence each step of the assembly you identify all the parts required for that step.
3. For larger items, please ensure that you have sufficient space and people (as indicated on page 1) to assemble your product safely.
4. We recommend that, where possible, all items are assembled near to the area in which they will be placed in use, to avoid moving the product unnecessarily once assembled.
5. For the protection of your furniture, particularly items of high gloss finish, we recommend that the product is placed on a protected surface during assembly to prevent any damage.
6. During assembly please take care not to over-tighten any fittings, as this may damage the product.

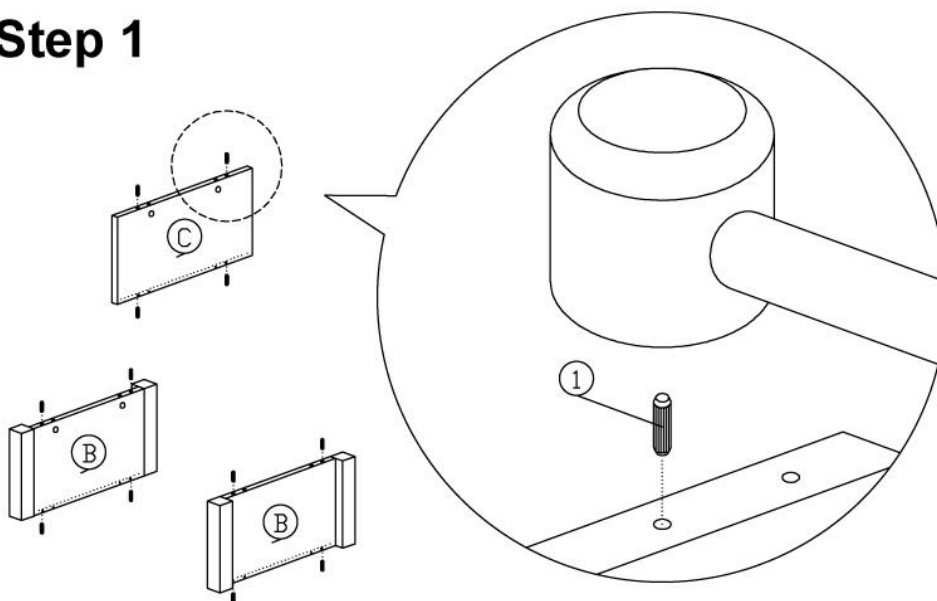
Care and Maintenance of your Furniture

- Please periodically check all fittings and re-tighten as necessary.
- To clean your item, please use a damp cloth and wipe clean.
- Never allow any kind of liquid to remain on your furniture .Absorption can cause wood to warp or finishes to de-laminate.
- Please do not place hot items (e.g. hot drinks) directly on to the wood surface.
- Please do not drag and pull your furniture.

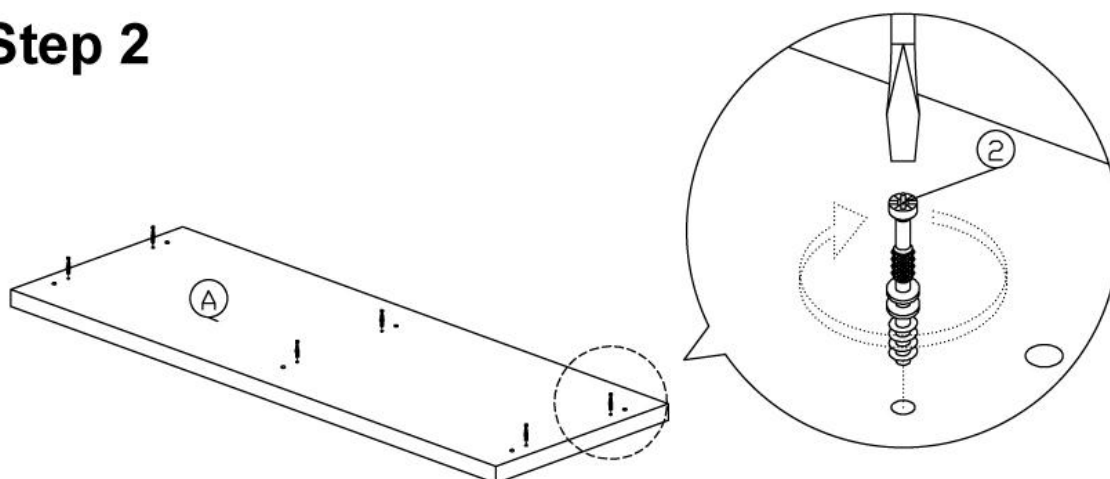
DESCRIPTION

ITEM NAME: CHICAGO WIDESCREEN TV UNIT
ITEM NO:

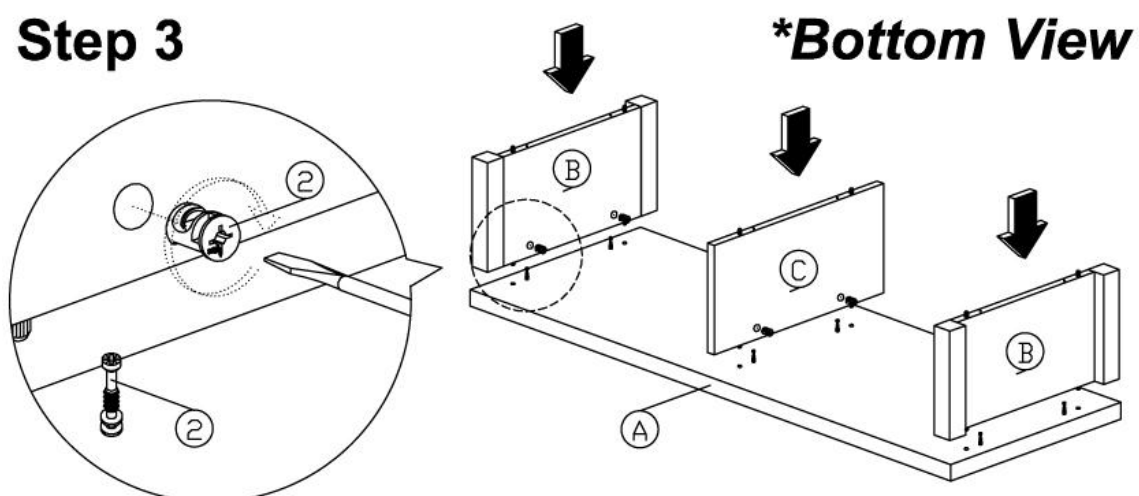
Step 1



Step 2



Step 3

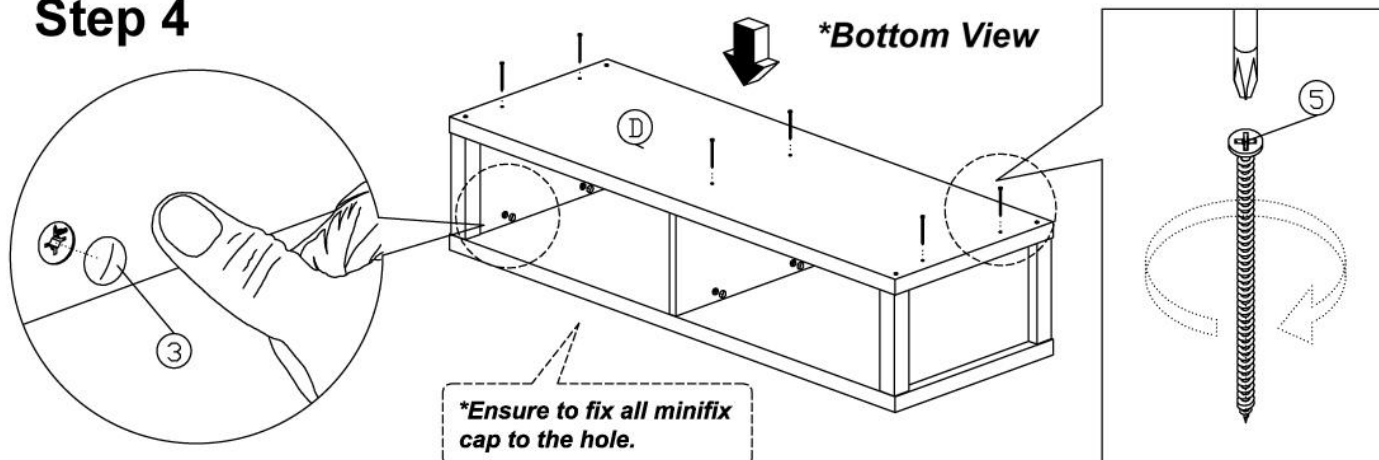


DESCRIPTION

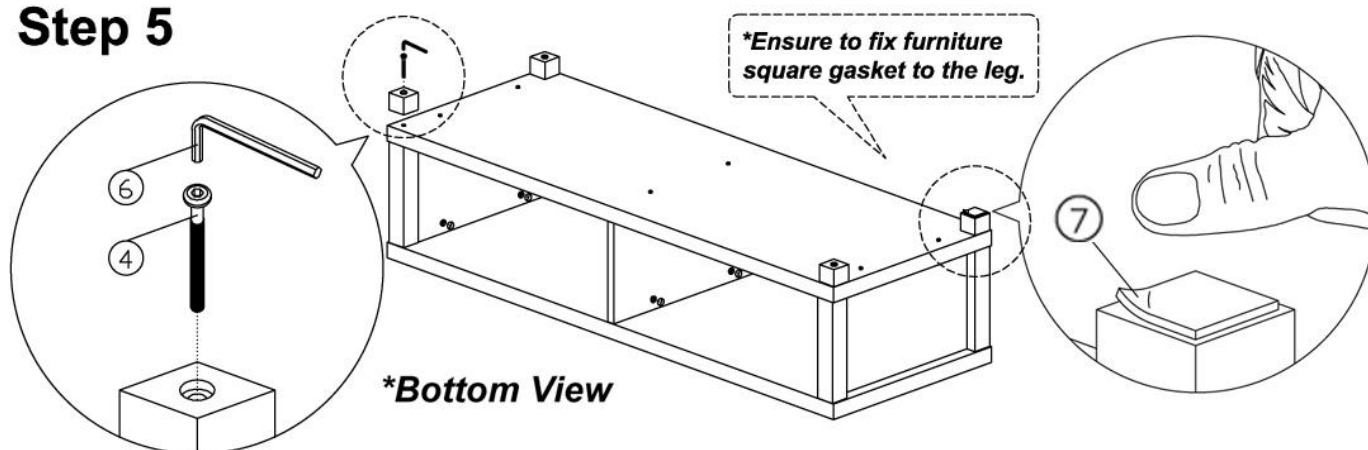
ITEM NAME: CHICAGO WIDESCREEEN TV UNIT

ITEM NO:

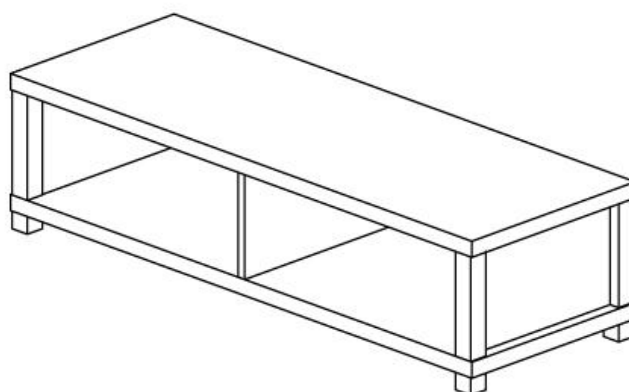
Step 4



Step 5



COMPLETED



DESCRIPTION

ITEM NAME: CHICAGO WIDESCREEN TV UNIT

ITEM NO:

MOUNTROSE

Thank you for purchasing your new Mountrose product.
If in the unlikely event you experience any problems with assembly, or require any
spare screws/fixings for this product,

DO NOT RETURN THIS ITEM!!!!

Please telephone the Mountrose Customer Helpline

0161 406 5040or email qc@mountrose.co.uk

THIS DOES NOT AFFECT YOUR STATUTORY RIGHTS