

IMPORTANT, RETAIN FOR FUTURE REFERENCE AND  
READ CAREFULLY. ASSEMBLY AND OPERATING  
INSTRUCTIONS FOR CHICAGO TV CABINET (B BOX)

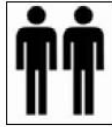
## DESCRIPTION

ITEM NAME: CHICAGO TV CABINET (B BOX)

ITEM NO:

**30 mins**

APPROXIMATE ASSEMBLY TIME



2 PERSONS ASSEMBLY

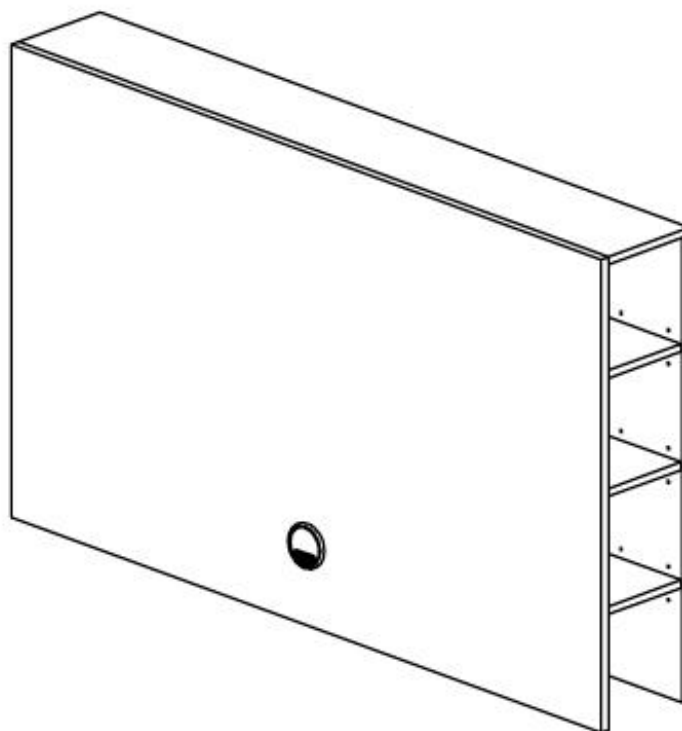
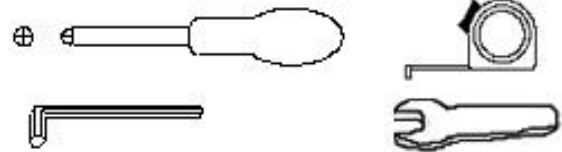
Floor Area  
2.5 m x 2.5 m



Ceiling Heights  
2.0 m

REQUIRED ASSEMBLY SPACE

REQUIRED ASSEMBLY TOOLS



**ASSEMBLED CHICAGO TV CABINET (B BOX)**

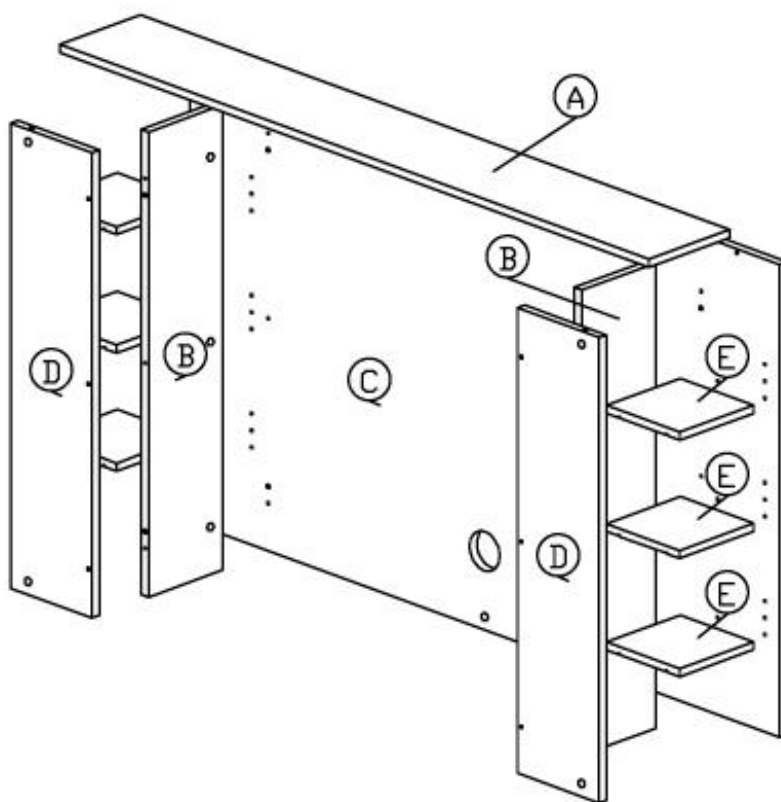
**MOUNTROSE**

MOUNTROSE LIMITED, ALAN HOUSE, ASHTON ROAD, BREDBURY, STOCKPORT. SK6 2QN UNITED KINGDOM



## DESCRIPTION

ITEM NAME: CHICAGO TV CABINET (B BOX)  
ITEM NO:

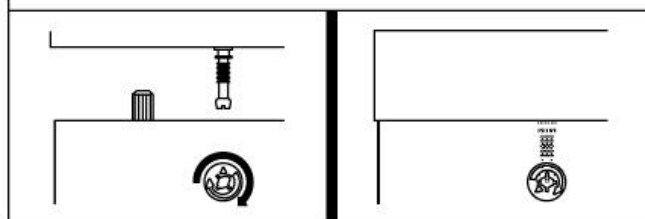
### Parts List



### Hardware List

<i>Hardware List</i>			
<i>No.</i>	<i>SHAPE</i>	<i>DESCRIPTION</i>	<i>Qty.</i>
1		<b>8x25mm Wood Dowel</b>	10Pcs
2		<b>15MM Myfix Minifix</b>	14Sets
3		<b>M5x38mm Screw</b>	6Pcs
4		<b>Shelf Support</b>	24Pcs
5		<b>PVC TV Cap</b>	1Pc

### *Dowel / Cam - Lock Installation*



**DESCRIPTION**

ITEM NAME: CHICAGO TV CABINET (B BOX)

ITEM NO:

1. Please check that all parts are present before you start the assembly of your furniture, as once assembled, the furniture is exempt from our home approval policy.
2. For ease and speed of assembly, we recommend that before you commence each step of the assembly you identify all the parts required for that step.
3. For larger items, please ensure that you have sufficient space and people (as indicated on page 1) to assemble your product safely.
4. We recommend that, where possible, all items are assembled near to the area in which they will be placed in use, to avoid moving the product unnecessarily once assembled.
5. For the protection of your furniture, particularly items of high gloss finish, we recommend that the product is placed on a protected surface during assembly to prevent any damage.
6. During assembly please take care not to over-tighten any fittings, as this may damage the product.

**Care and Maintenance of your Furniture**

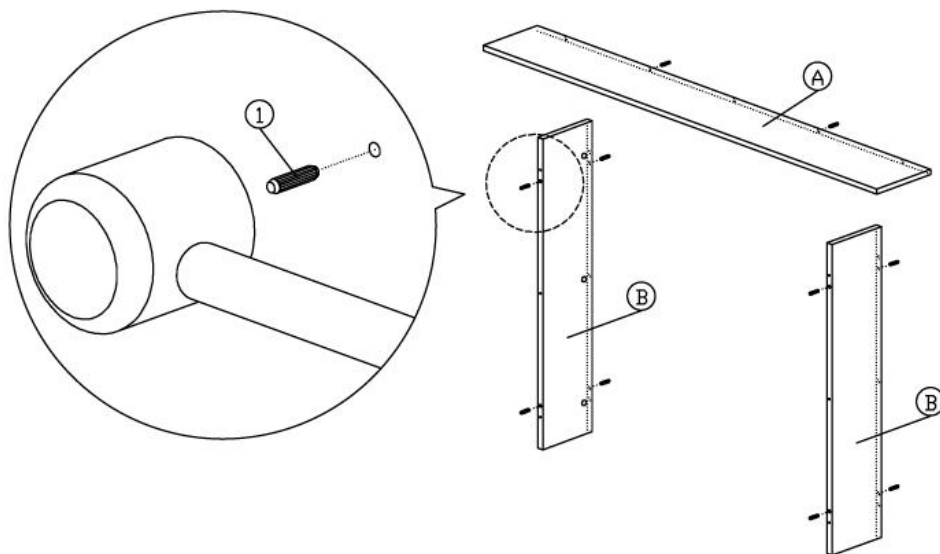
- Please periodically check all fittings and re-tighten as necessary.
- To clean your item, please use a damp cloth and wipe clean.
- Never allow any kind of liquid to remain on your furniture .Absorption can cause wood to warp or finishes to de-laminate.
- Please do not place hot items (e.g. hot drinks) directly on to the wood surface.
- Please do not drag and pull your furniture.

## DESCRIPTION

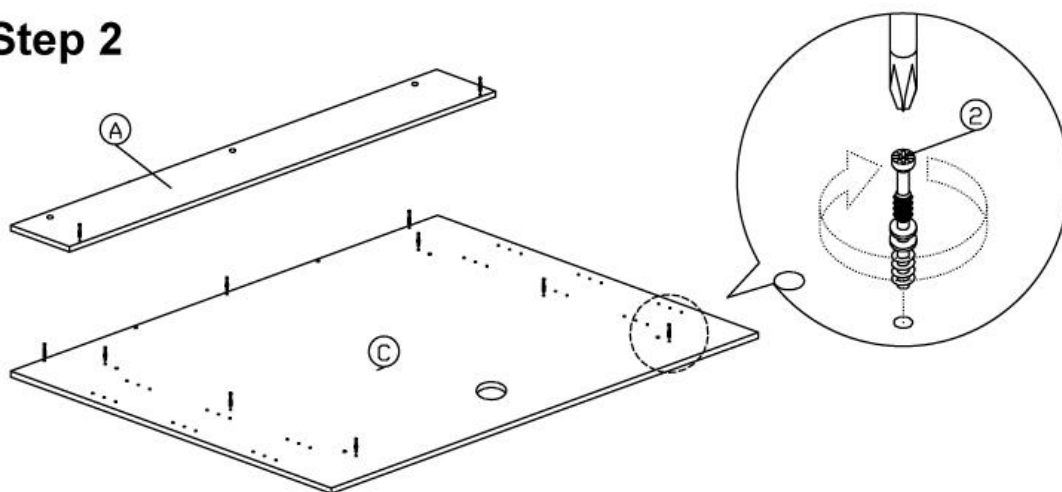
ITEM NAME: CHICAGO TV CABINET (B BOX)

ITEM NO:

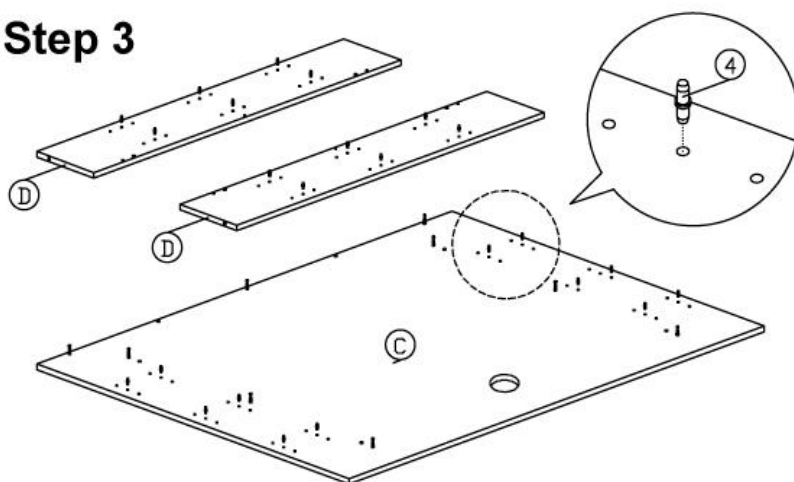
### Step 1



### Step 2



### Step 3

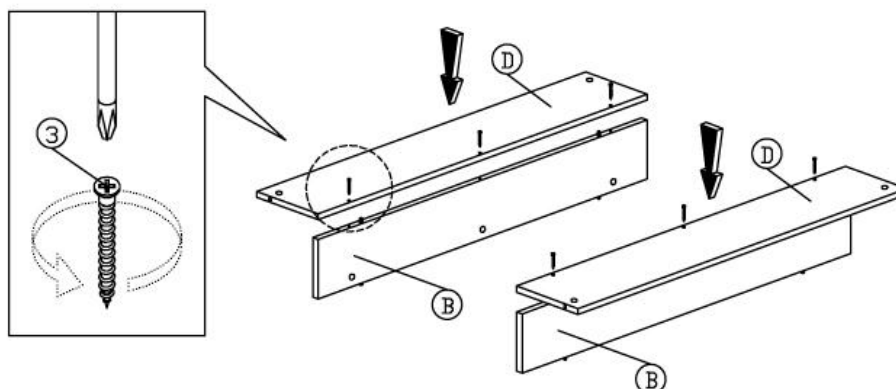


## DESCRIPTION

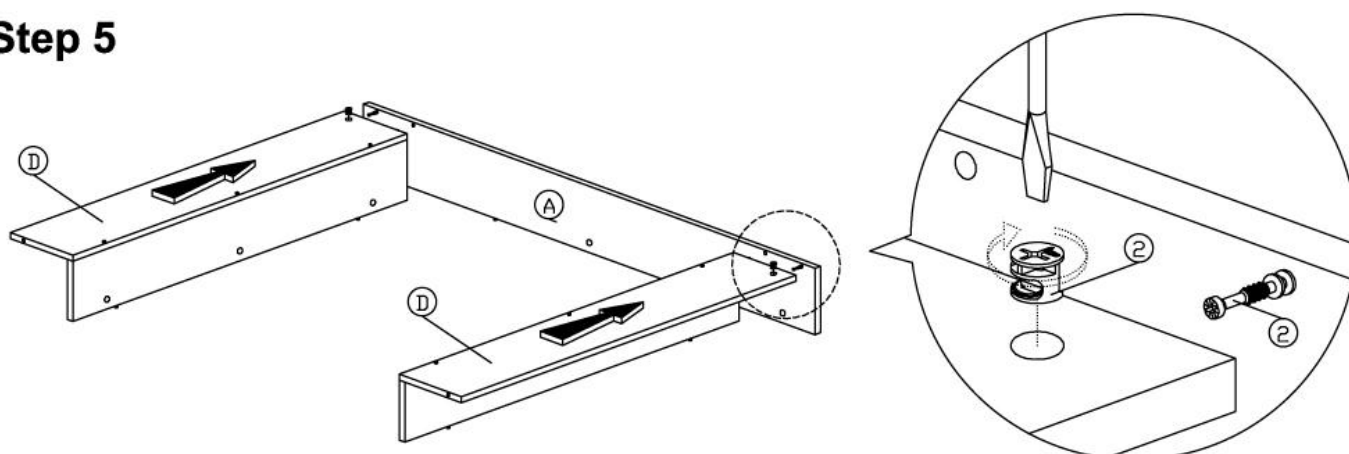
ITEM NAME: CHICAGO TV CABINET (B BOX)

ITEM NO:

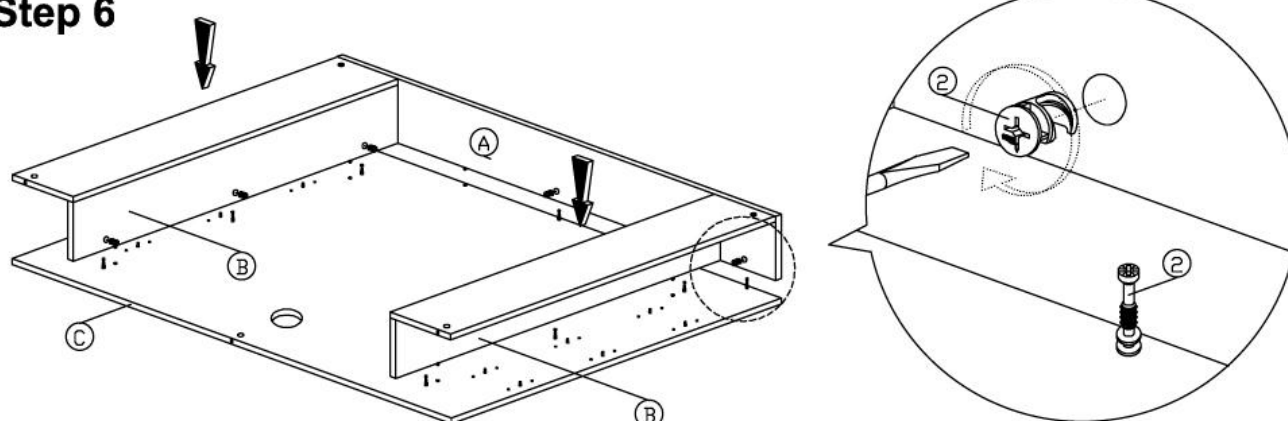
### Step 4



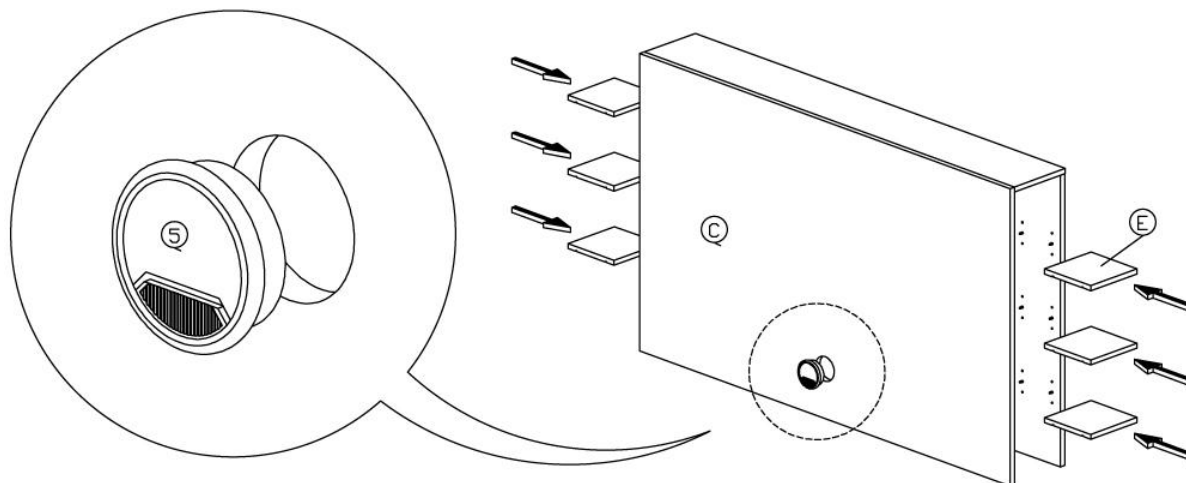
### Step 5



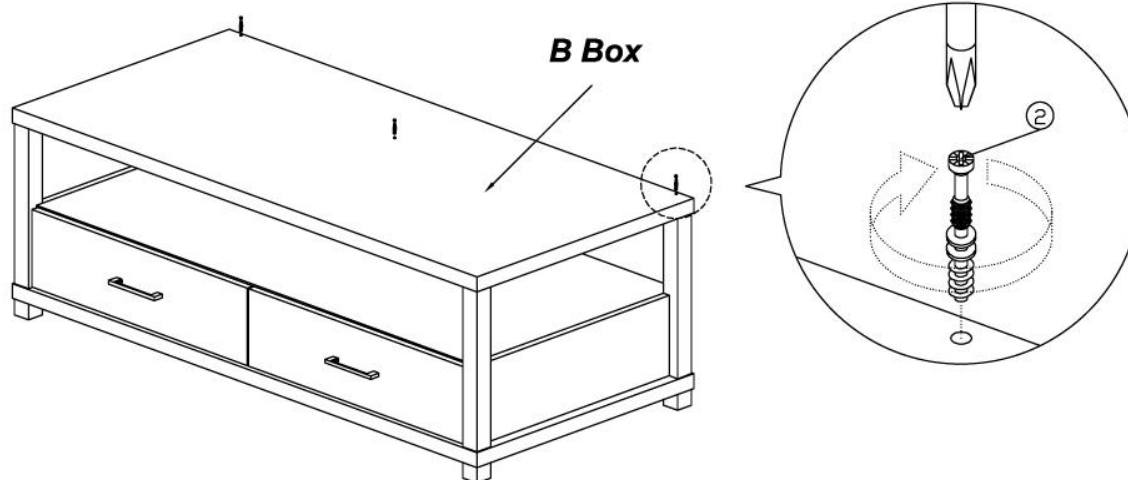
### Step 6



### Step 7



### Step 8

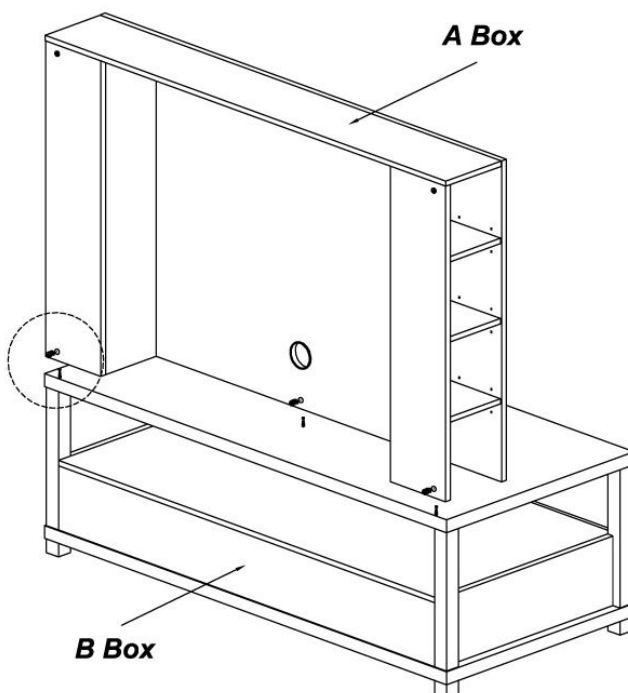
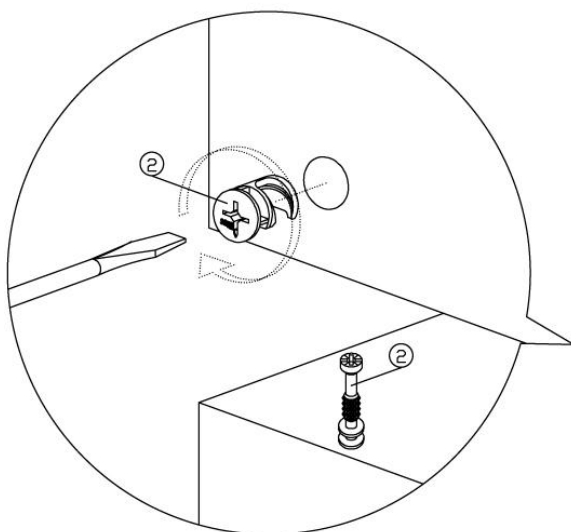


## DESCRIPTION

ITEM NAME: CHICAGO TV CABINET (B BOX)

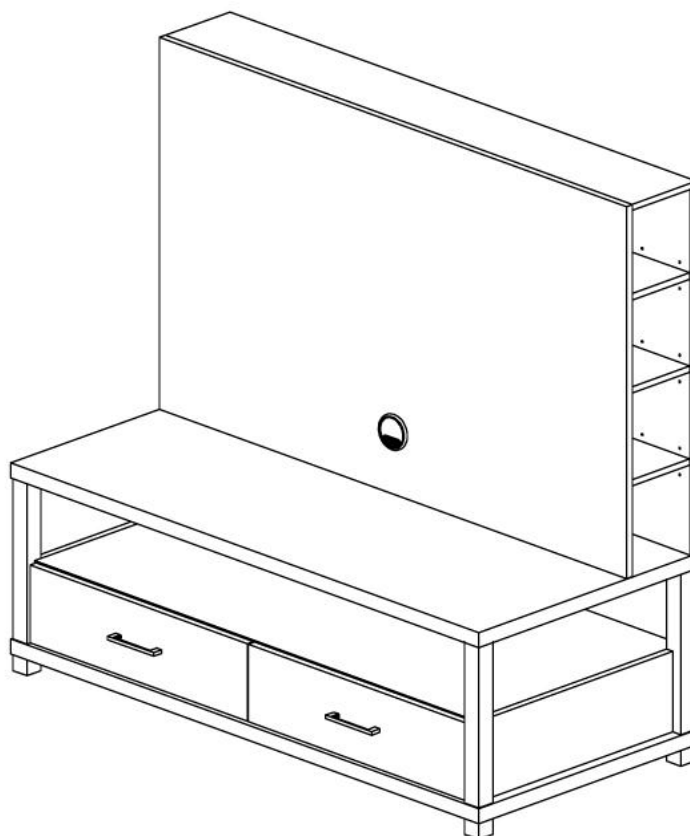
ITEM NO:

### Step 9



**Back View**

**Complete**



**DESCRIPTION**

ITEM NAME: CHICAGO TV CABINET (B BOX)

ITEM NO:

MOUNTROSE

Thank you for purchasing your new Mountrose product.  
If in the unlikely event you experience any problems with assembly, or require any  
spare screws/fixings for this product,

**DO NOT RETURN THIS ITEM!!!!**

Please telephone the Mountrose Customer Helpline

**0161 406 5040**or email [qc@mountrose.co.uk](mailto:qc@mountrose.co.uk)

THIS DOES NOT AFFECT YOUR STATUTORY RIGHTS

IMPORTANT, RETAIN FOR FUTURE REFERENCE AND  
READ CAREFULLY. ASSEMBLY AND OPERATING  
INSTRUCTIONS FOR CHICAGO TV CABINET (A BOX)

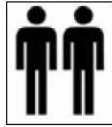
## DESCRIPTION

ITEM NAME: CHICAGO TV CABINET (A BOX)

ITEM NO:

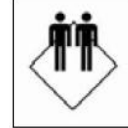
**30 mins**

APPROXIMATE ASSEMBLY TIME



2 PERSONS ASSEMBLY

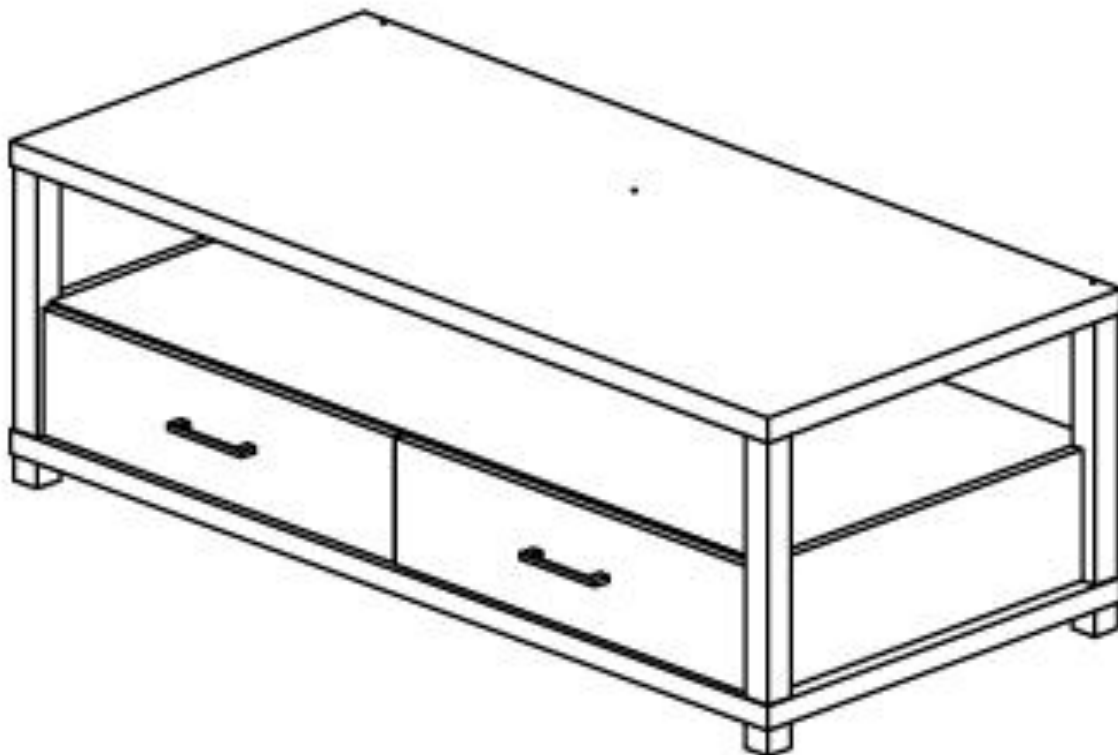
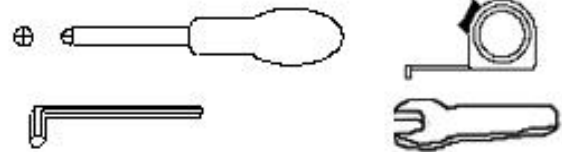
Floor Area  
2.5 m x 2.5 m



Ceiling Heights  
2.0 m

REQUIRED ASSEMBLY SPACE

REQUIRED ASSEMBLY TOOLS



ASSEMBLED CHICAGO TV CABINET (A BOX)

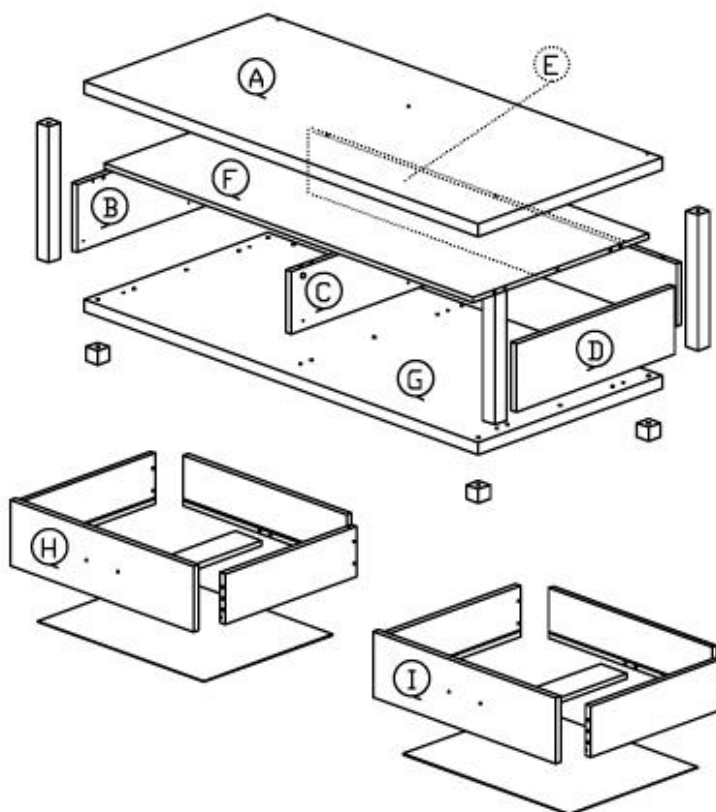
**MOUNTROSE**

MOUNTROSE LIMITED, ALAN HOUSE, ASHTON ROAD, BREDBURY, STOCKPORT. SK6 2QN UNITED KINGDOM

## DESCRIPTION

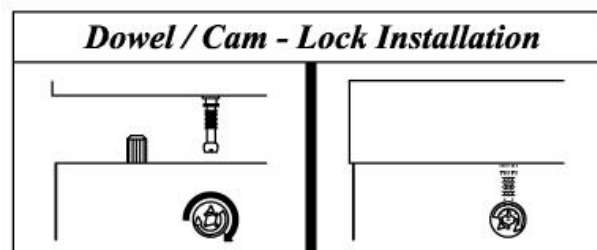
ITEM NAME: CHICAGO TV CABINET (A BOX)  
ITEM NO:

### Parts List



### Hardware List

<i>Hardware List</i>			
No.	SHAPE	DESCRIPTION	Qty.
1		8x25mm Wood Dowel	40Pcs
2		15MM Myfix Minifix	14Sets
3		M3.5x15mm Screw	16Pcs
4		M4x38mm Screw	8Pcs
5		M5x38mm Screw	6Pcs
6		M6x90mm Screw	4Pcs
7		L Key	1Pc
8		Drawer Slide = 400mm	2Sets
9		Handle U Shape (96mm) M3.6x20mm Screw	2Sets
10		Furniture Square Gasket	4Pcs



**DESCRIPTION**

**ITEM NAME: CHICAGO TV CABINET (A BOX)**  
**ITEM NO:**

1. Please check that all parts are present before you start the assembly of your furniture, as once assembled, the furniture is exempt from our home approval policy.
2. For ease and speed of assembly, we recommend that before you commence each step of the assembly you identify all the parts required for that step.
3. For larger items, please ensure that you have sufficient space and people (as indicated on page 1) to assemble your product safely.
4. We recommend that, where possible, all items are assembled near to the area in which they will be placed in use, to avoid moving the product unnecessarily once assembled.
5. For the protection of your furniture, particularly items of high gloss finish, we recommend that the product is placed on a protected surface during assembly to prevent any damage.
6. During assembly please take care not to over-tighten any fittings, as this may damage the product.

**Care and Maintenance of your Furniture**

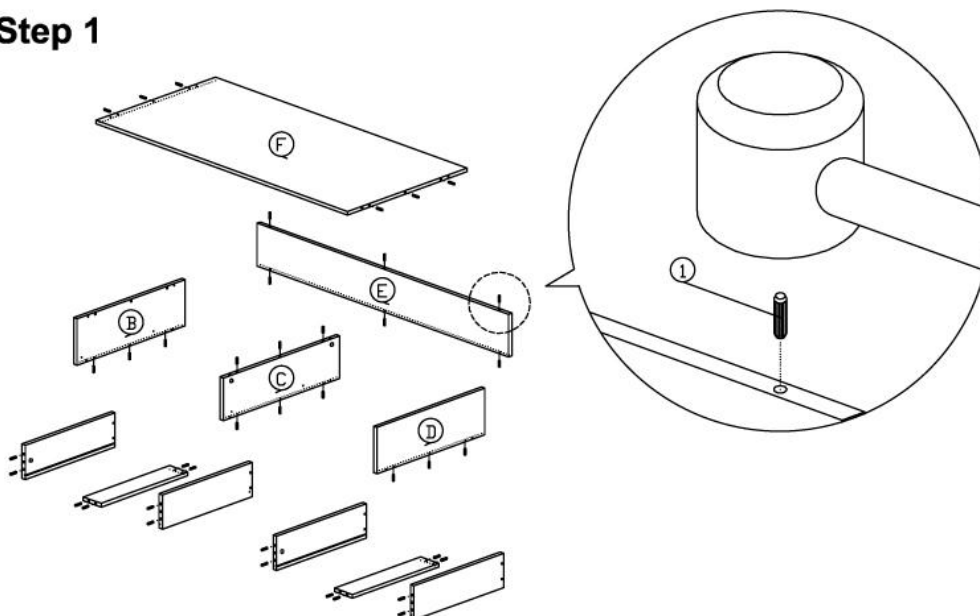
- Please periodically check all fittings and re-tighten as necessary.
- To clean your item, please use a damp cloth and wipe clean.
- Never allow any kind of liquid to remain on your furniture .Absorption can cause wood to warp or finishes to de-laminate.
- Please do not place hot items (e.g. hot drinks) directly on to the wood surface.
- Please do not drag and pull your furniture.

## DESCRIPTION

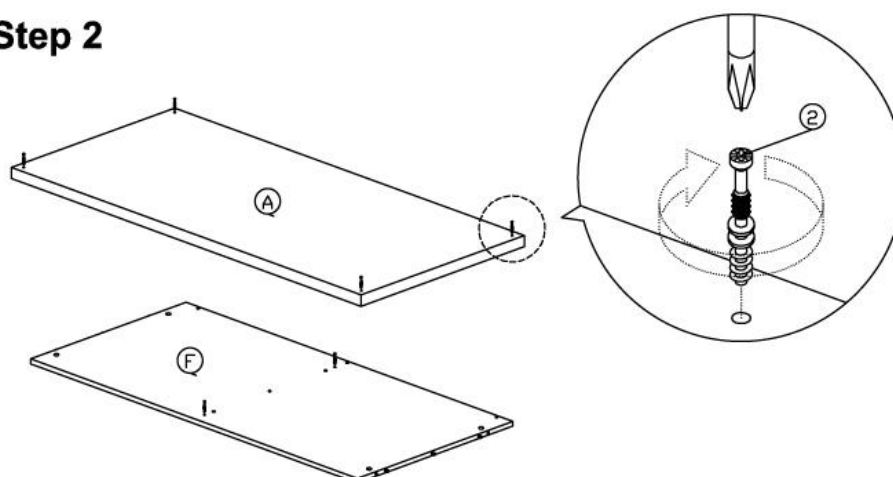
ITEM NAME: CHICAGO TV CABINET (A BOX)

ITEM NO:

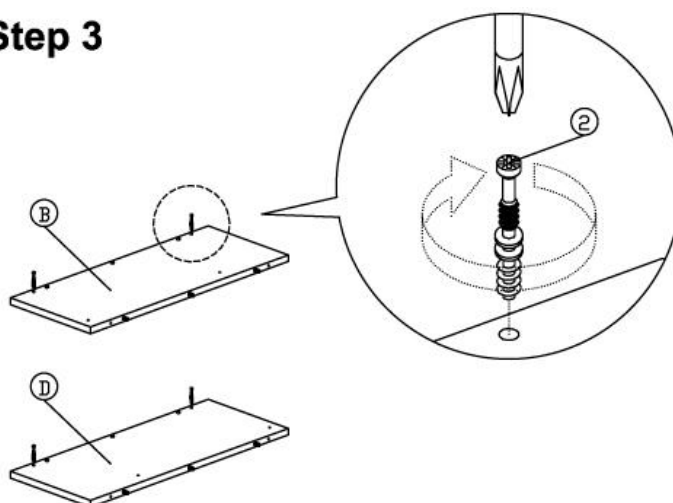
### Step 1



### Step 2



### Step 3

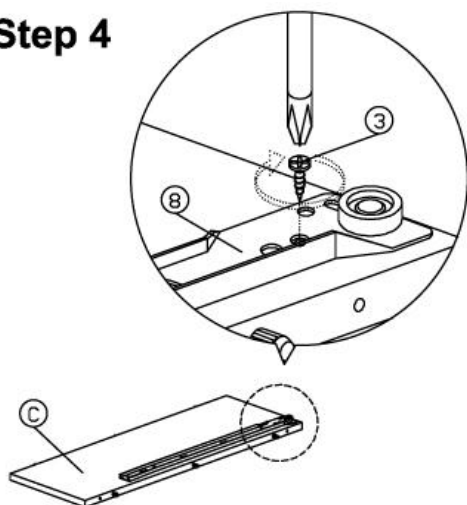


## DESCRIPTION

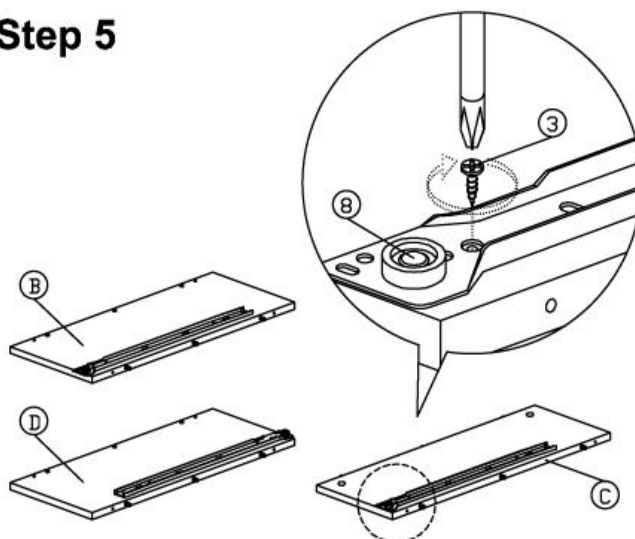
ITEM NAME: CHICAGO TV CABINET (A BOX)

ITEM NO:

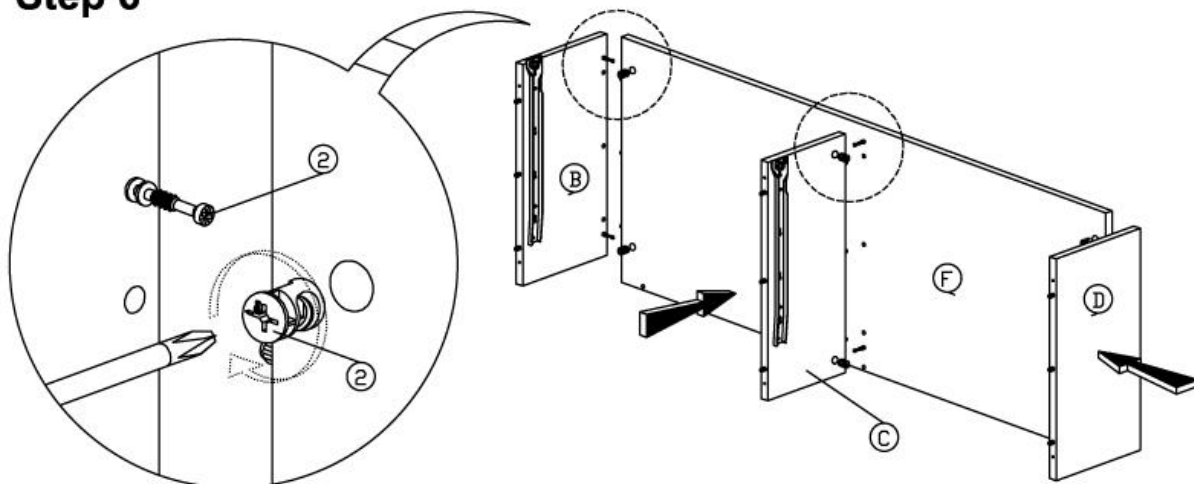
**Step 4**



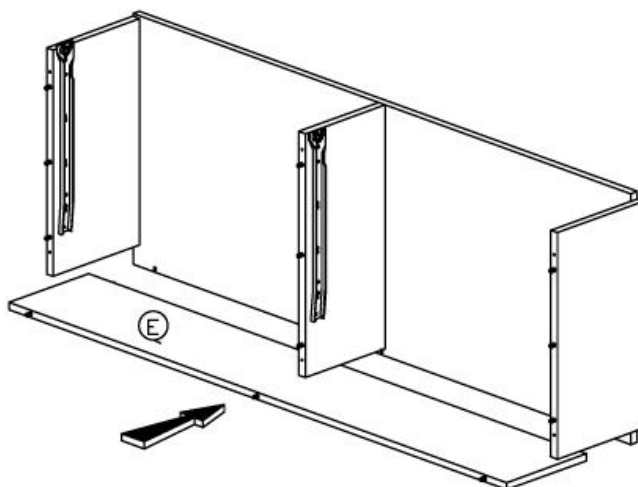
**Step 5**



**Step 6**



**Step 7**

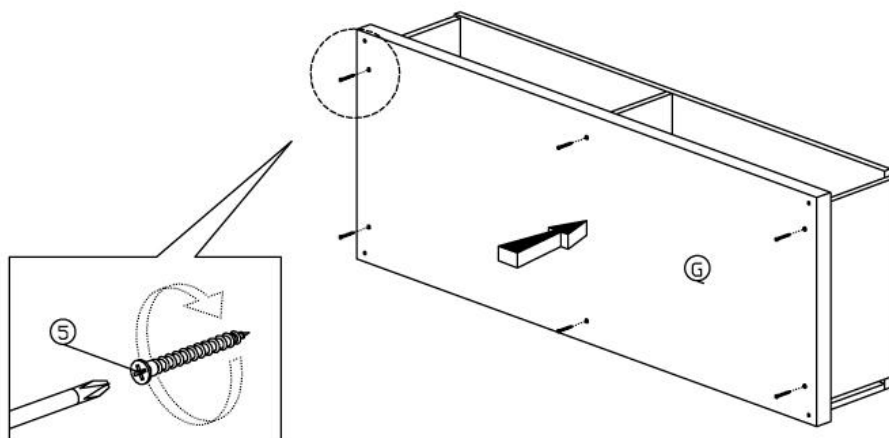


## DESCRIPTION

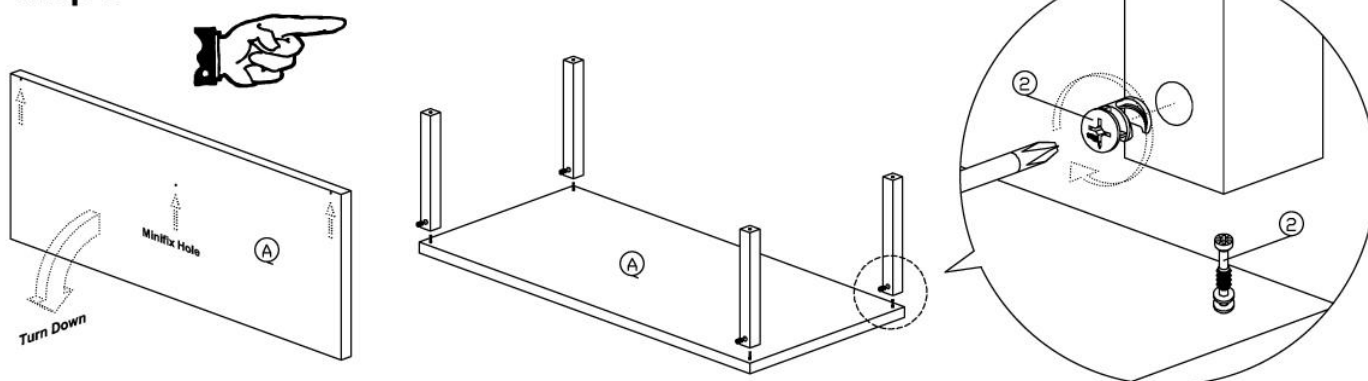
ITEM NAME: CHICAGO TV CABINET (A BOX)

ITEM NO:

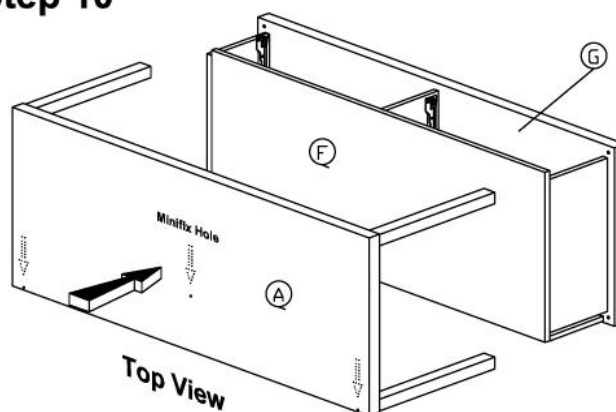
### Step 8



### Step 9



### Step 10

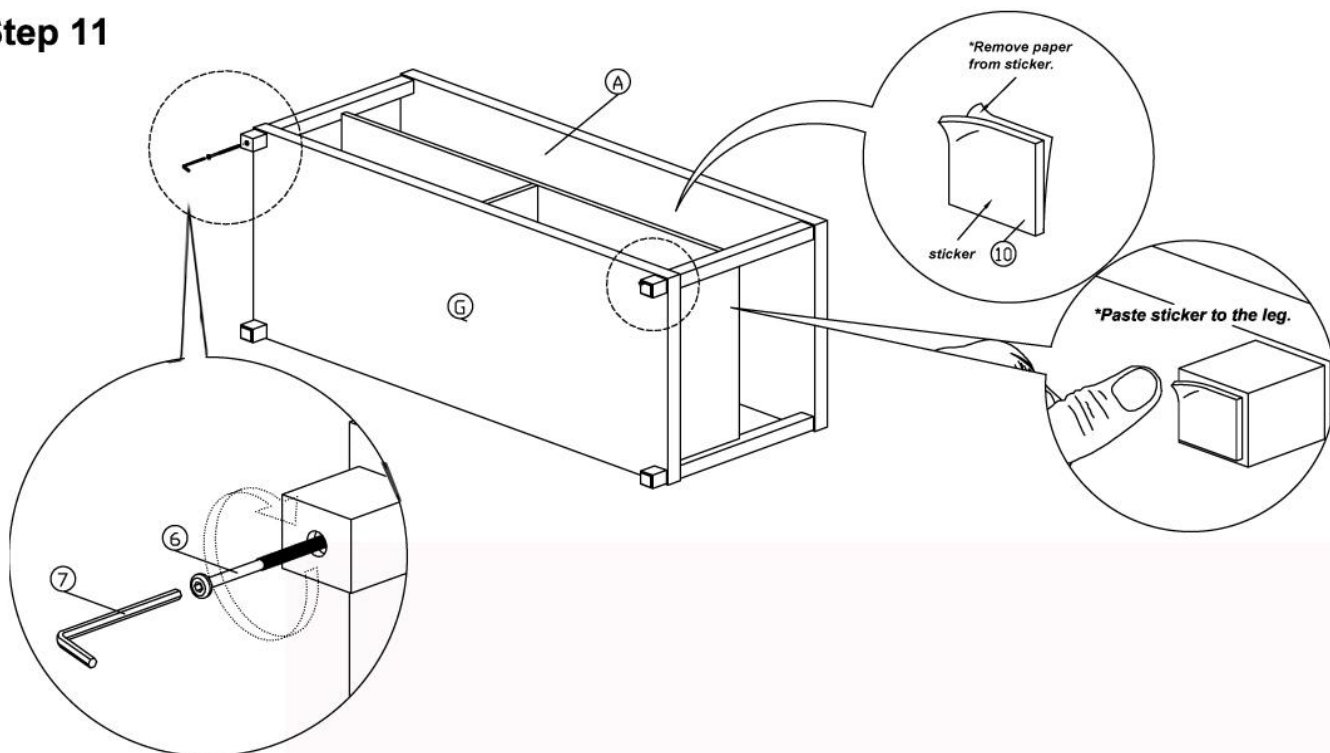


## DESCRIPTION

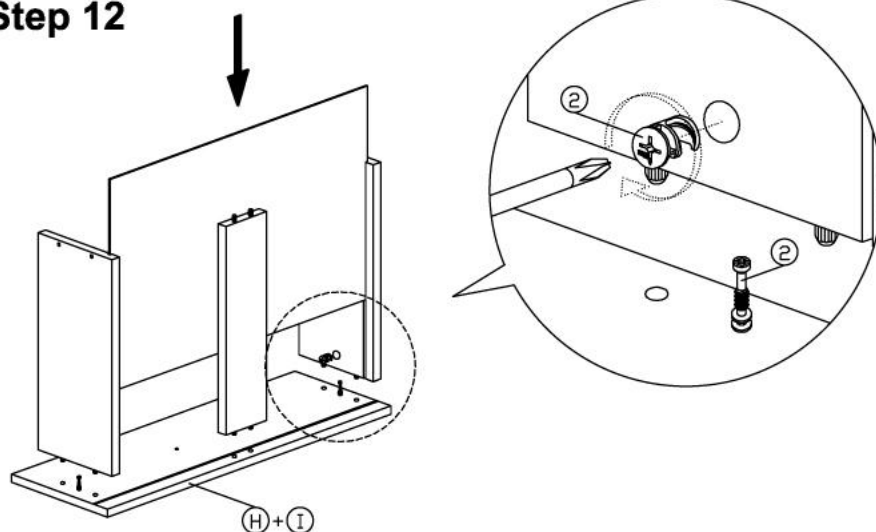
ITEM NAME: CHICAGO TV CABINET (A BOX)

ITEM NO:

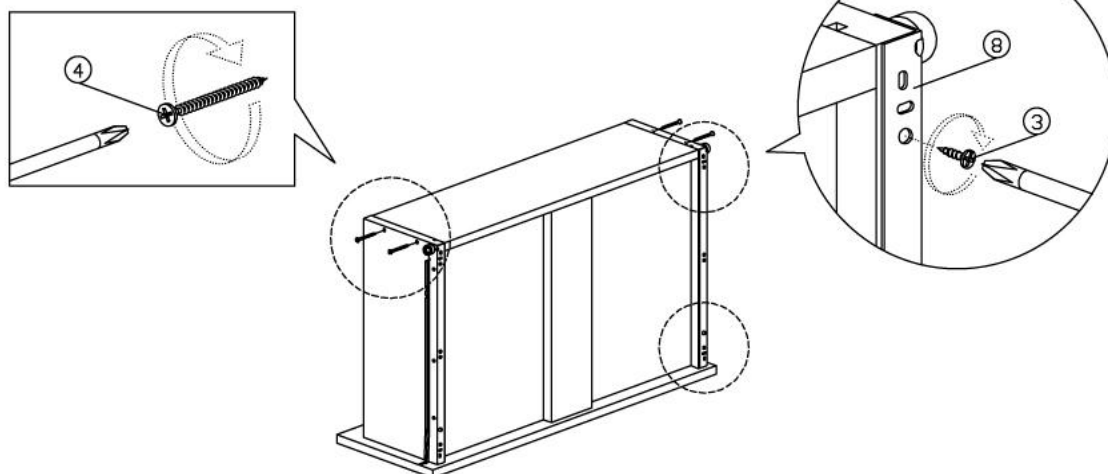
### Step 11



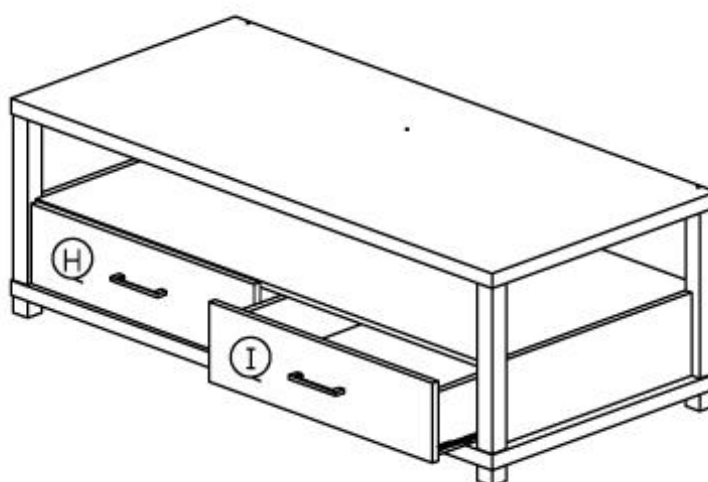
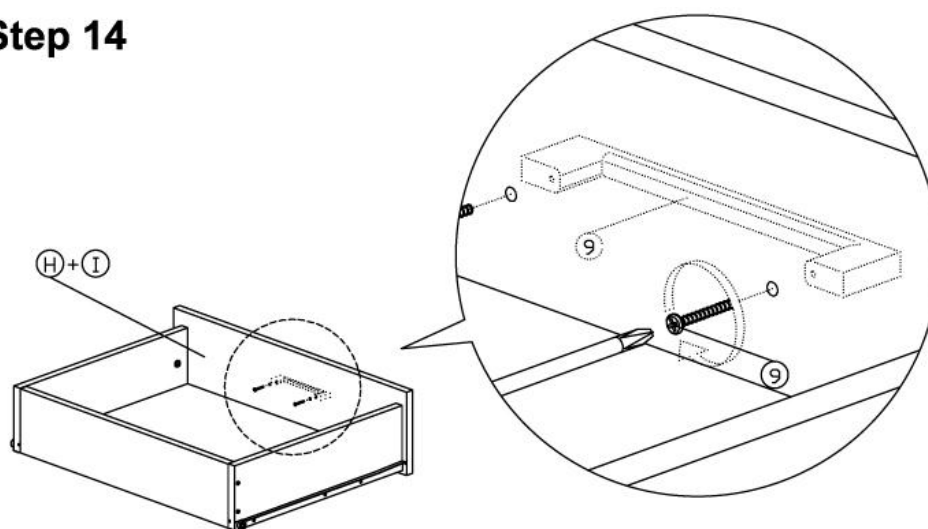
### Step 12



### Step 13



### Step 14



MOUNTROSE

**DESCRIPTION**

ITEM NAME: CHICAGO TV CABINET (A BOX)

ITEM NO:

MOUNTROSE

Thank you for purchasing your new Mountrose product.  
If in the unlikely event you experience any problems with assembly, or require any  
spare screws/fixings for this product,

**DO NOT RETURN THIS ITEM!!!!**

Please telephone the Mountrose Customer Helpline

**0161 406 5040**

or email [qc@mountrose.co.uk](mailto:qc@mountrose.co.uk)

THIS DOES NOT AFFECT YOUR STATUTORY RIGHTS

MOUNTROSE

MOUNTROSE LIMITED, ALAN HOUSE, ASHTON ROAD, BREDBURY, STOCKPORT. SK6 2QN UNITED KINGDOM