

RN300250MUK Rev4

# morphy richards®

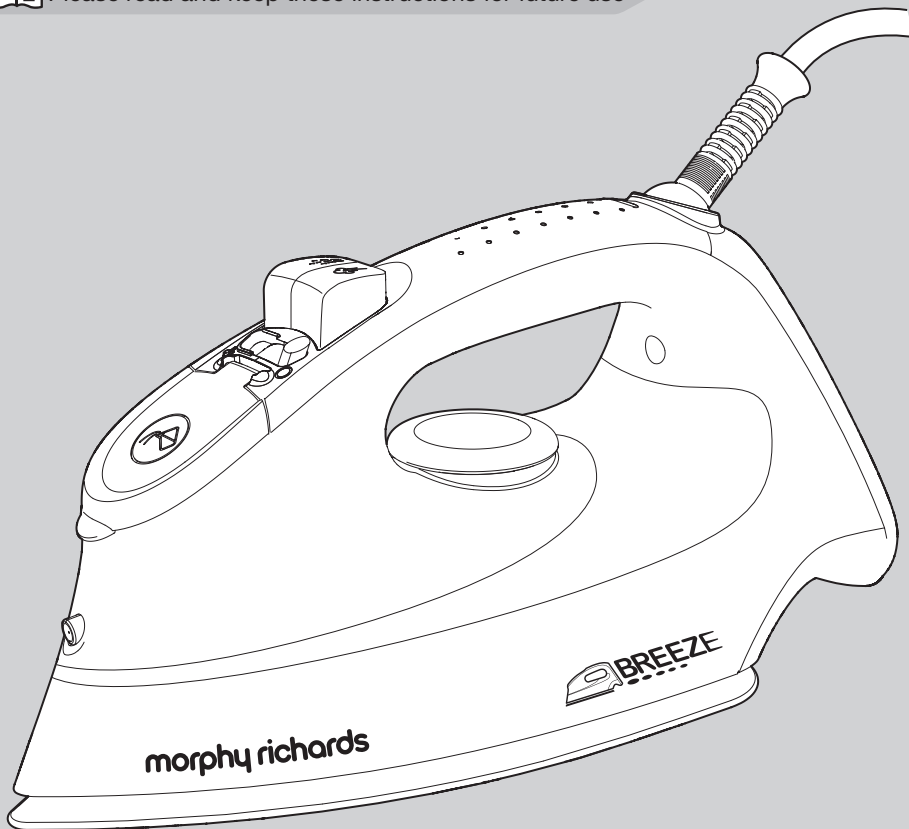
smart ideas for your home



## BREEZE Steam Iron



Please read and keep these instructions for future use



**IMPORTANT: To prevent limescale problems which would not be covered by the guarantee, we recommend the use of a mix of 50% tap water and 50% distilled or demineralised water (available from most large supermarkets).**

For competitions, product hints and tips and more join us at



[www.morphyrichards.co.uk/blog](http://www.morphyrichards.co.uk/blog)



[www.facebook.com/morphyrichardsuk](https://www.facebook.com/morphyrichardsuk)



[@loveyourmorphy](https://twitter.com/loveyourmorphy)

[www.morphyrichards.com](http://www.morphyrichards.com)

\* Register online for your 3 year guarantee. See the back of this instruction book for details. (UK and Ireland customers only)

## Important safety instructions

- This appliance can be used by children aged from 8 years and above and persons with reduced physical, sensory or mental capabilities or lack of experience or knowledge if they have been given supervision or instruction concerning use of the appliance in a safe way and understand the hazards involved.
- Children shall not play with the appliance.
- Cleaning and user maintenance shall not be made by children without supervision.
- Keep the iron and its cord out of reach of children less than 8 years of age at all times.
- The iron must not be left unattended while it is connected to the supply mains.
- The plug must be removed from the socket before filling the iron with water.
- The iron must be used and rested on a stable surface.
- When placing the iron on its heel, ensure that the surface on which the heel is placed is stable.
- The iron is not to be used if it has been dropped, if there are visible signs of damage or it is leaking.
- The filling aperture must not be opened during use.



**CAUTION - HOT:** Burns can occur from touching hot parts, hot water or steam.

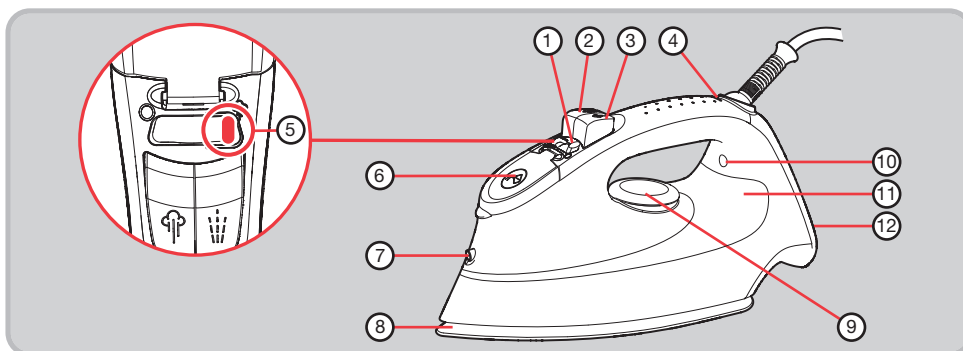
- **WARNING:** To avoid electric shock, do not immerse appliance in water / liquid.
- **WARNING:** Misuse of the appliance could cause personal injury.

### Electrical requirements and mains cable

- Check that the voltage on the rating plate of your appliance corresponds with your house electricity supply which must be A.C. (Alternating current).
- Do not operate with a damaged supply cord or grommet, it must be replaced by the manufacturer, its service agent or similarly qualified person in order to avoid a hazard.
- Do not let the mains lead come into contact with the hot soleplate of the iron.
- Should the fuse in the mains plug require changing, a 13 amp BS1362 fuse must be fitted.
- **WARNING:** This appliance must be earthed.

**PLEASE READ ALL INSTRUCTIONS AND KEEP FOR REFERENCE**

## Steam iron overview



- |   |                           |                                  |
|---|---------------------------|----------------------------------|
| (1) Variable steam switch                         | (5) Self clean position   | (10) Temperature indicator light |
| (2) Water spray button                            | (6) Filling hole with cap | (11) Water tank                  |
| (3) Steam boost button                            | (7) Spray nozzle          | (12) Iron heel                   |
| (4) Auto shut-off indicator (certain models only) | (8) Soleplate             |                                  |
|   | (9) Temperature dial      |                                  |

## Temperature guide

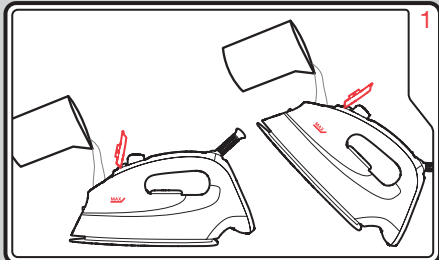
Heat setting markings on the temperature dial of all Morphy Richards irons match those of the International Textile Care Labelling Code

Symbol	(120°C Max) Cool	(160°C Max) Warm	(210°C Max) Hot	MAX setting
<b>Control dial positions</b>	Do not iron	•	••	•••
<b>Steam level setting</b> (see step 3 of 'Using the iron for steam ironing' on page 4)	No steam (see 'Dry ironing' on page 5)	Low	Medium / High	High
<b>Fabric</b>	Nylon, Acetates, synthetic fabrics	Wool, Polyester mixtures	Cotton, Linen Rayon, Rayon mixtures	
<b>Ironing</b>	Iron on wrong side, if moisture required, use damp cloth (not Acetate)		Fabrics requiring this setting usually require steam pressing.	
<b>With water in tank</b>	← Dry and spray		← Steam/spray/shot of steam →	
<b>Without water in tank</b>	← Dry ironing →			

## Before use

Remove any protective cover from the soleplate (8).

## Using the iron for steam ironing

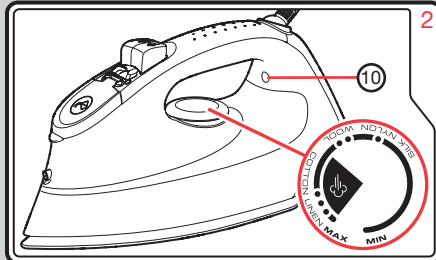


Make sure the iron is not plugged in. Set the variable steam switch (1) to '0'. Fill the water tank (11) via the filling hole (6). The MAX graphic on the side of the water tank has two positions, allowing the tank to be filled in either a horizontal or tilted position. To fill the tank with the maximum amount of water, we recommend the iron is tilted whilst being filled.

**IN HARD WATER AREAS, WE RECOMMEND A MIX OF 50% TAP WATER AND 50% DISTILLED OR DEMINERALISED WATER.**

**Never use battery topping up fluid or water containing any substances like starch, sugar, fragrant additives or defrosted water from a refrigerator.**

NOTE: Please see point 2 of 'Exclusions' on page 8.



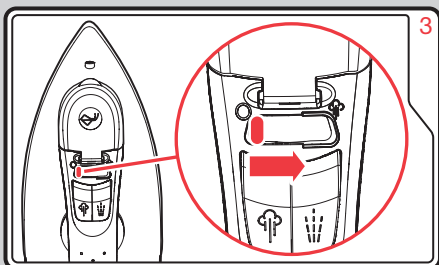
Plug in the iron and switch on at the mains.

Set the temperature dial (9) to the temperature required (see 'Temperature Guide' on page 3). The temperature indicator light (10) will illuminate until the required temperature is reached, then it will turn off.

Tip: We recommend the temperature indicator light is allowed to illuminate and extinguish twice before you begin ironing.

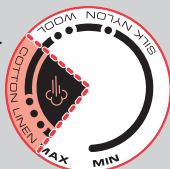
The temperature indicator light will switch on and off whilst you are ironing.

Tip: Begin with cool fabrics and work up to higher settings. An iron heats up quicker than it cools down so this will save you time and energy.



Vary the steam output using the variable steam switch (1).

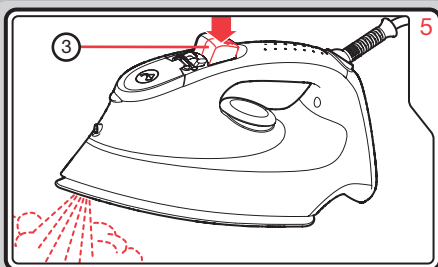
Only use the steam function on heavy fabrics and when the temperature dial is set within the shaded area (as shown, right).



For stubborn creases, use the water spray button (2).

If using for the first time, you may need to press this a few times to prime the pump.

## Using the iron for steam ironing (continued)



### Steam boost

Press the steam boost button (3) for an extra steam burst for stubborn creases / heavy fabrics.

NOTE: If you need to use the steam boost whilst dry ironing, check the temperature dial (9) is set within the steam range.

NOTE: For optimum steam quality, do not operate the shot more than three times in succession.

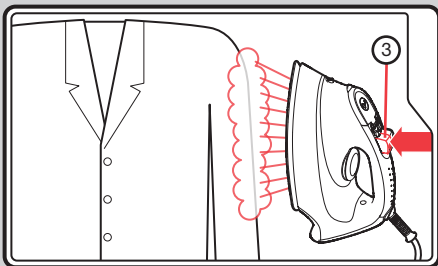
## Features of your iron

### Dry ironing

Your iron can be used for dry ironing. Set the variable steam switch (1) to 'O' and set the temperature dial (9) as desired (see page 3). You won't need water in the tank unless using the water spray or steam boost features.

### Vertical steam

Vertical steam is useful for removing creases from hanging clothes, curtains, etc. Hold the iron between 1cm and 2cm away from the item and press the steam boost button (3).



### Anti-drip system (certain models only)

This prevents water escaping from the soleplate (8) when the iron is too cold.

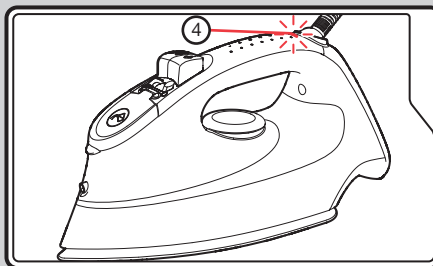
During use, the anti-drip system may emit a loud click, particularly during heat-up or whilst cooling down. This is perfectly normal and indicates that the system is functioning correctly.

### Anti-scale system

This system reduces scale deposits and helps prolong the life of the iron.

### Auto shut-off (certain models only)

The iron will automatically shut down if stationary in the horizontal position for 1 minute, or in the vertical position for 8 minutes.



When auto shut-off is activated, the indicator light (4) will flash.

Gently move the iron and it will reheat. Wait for the iron to heat-up and continue ironing.

## Maintenance

### To clean a stainless steel soleplate

We recommend using a generally available gentle chrome, silver or stainless steel cleaner. Always follow the manufacturer's instructions.

If any man-made fibres fuse to the soleplate (8), set the iron at the 3-dot position and pass it over a clean piece of cotton to draw the deposit off the surface.

### To clean a coated soleplate

Do not use scouring powder or solution as this could cause damage to the coating.

If any man-made fibres fuse to the soleplate (8), set the iron at the MAX position and pass it over a clean piece of cotton to draw the deposit off the surface.

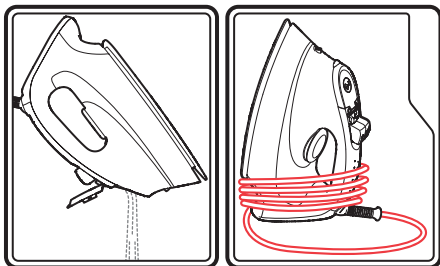
### To clean the exterior

Allow the unit to cool and wipe over with a damp cloth and mild detergent, then wipe dry.

## Emptying and storing

When you have finished ironing, unplug and empty all water from your iron and set the steam switch at the 'O' position. When cool, store the iron on its heel with the cord wrapped loosely around the heel.

NOTE: Please see point 3 of 'Exclusions' on page 8.

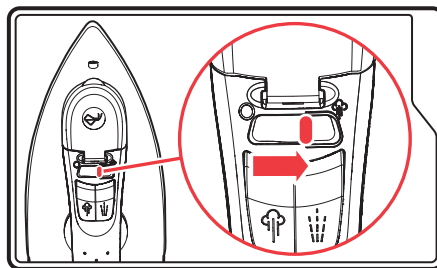


## Self clean

Your iron has a built in cleaning system designed to keep the water valve, steam chamber and steam vents clear of lint and loose mineral deposits.

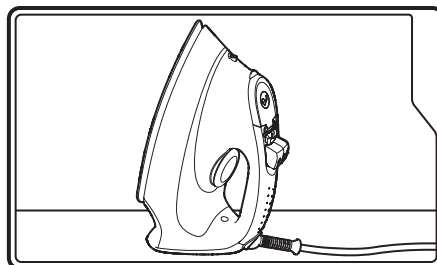
- 1 Half fill the iron with water.
- 2 Place the iron on its heel (12).

- 3 Move the variable steam switch (1) to the MAX position.

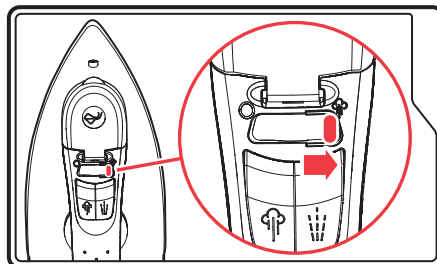


- 4 Connect to a mains supply outlet.
- 5 Set the temperature dial (9) to 'MAX'. See step 2 of 'Using your iron for steam ironing' on page 4.
- 6 Leave the iron switched on, rested on its heel (12) until the temperature indicator light (10) goes out.

**WARNING: Keep hands and body away from the hot soleplate.**



- 7 Disconnect the iron from the mains supply outlet.
  - 8 Whilst the iron is still very hot, hold the iron horizontally over a sink.
- CAUTION: The soleplate will still be hot, so ensure the power cord and plug are kept away from it and the sink.**
- 9 Push the variable steam switch (1) fully to the right and hold in the self clean position (5).



**WARNING: Steam and boiling hot water will drain from the holes in the soleplate. Keep hands and body away from the hot water. This washes away the scale and minerals that have built up inside the steam chamber.**



RN300250MUK Rev4 07/16

## Registering your 3 year guarantee

Your standard 1 year guarantee is extended for an additional 2 years when you register the product within 28 days of purchase with Morphy Richards. If you do not register the product with Morphy Richards within 28 days, your product is guaranteed for 1 year. To validate your 3 year guarantee register with us online at

[www.morphyrichards.co.uk](http://www.morphyrichards.co.uk)

Or call our customer registration line

UK 0344 871 0242

IRE 1800 409 119

N.B. Each qualifying product needs to be registered with Morphy Richards individually.

Please note that the 3 year guarantee is only available in the UK and Ireland. Please refer to the 1 year guarantee for more information.

## Your 1 year guarantee

It is important to retain the retailer's receipt as proof of purchase. Staple your receipt to this back cover for future reference.

Please quote the following information if the product develops a fault. These numbers can be found on the base of the product.

Model no.

Serial no.

All Morphy Richards products are individually tested before leaving the factory. In the unlikely event of any appliance proving to be faulty within 28 days of purchase, it should be returned to the place of purchase for it to be replaced.

If the fault develops after 28 days and within 12 months of original purchase, you should contact the Helpline number quoting Model number and Serial number on the product, or write to Morphy Richards at the address shown.

You may be asked to return a copy of proof of purchase.

Subject to the exclusions set out below (see Exclusions), the faulty appliance will then be repaired or replaced as appropriate and dispatched usually within 7 working days of receipt.

If, for any reason, this item is replaced or repaired during the 1 year guarantee period, the guarantee on the new item will be calculated from original purchase date. Therefore it is vital to retain your original till receipt or invoice to indicate the date of initial purchase.

To qualify for the 1 year guarantee, the appliance must have been used according to the instructions supplied. For example, water should be emptied after each use.

## Exclusions

Morphy Richards shall not be liable to replace or repair the goods under the terms of the guarantee where:

- 1 The fault has been caused or is attributable to accidental use, misuse, negligent use or used contrary to the manufacturer's recommendations or where the fault has been caused by power surges or damage caused in transit.
  - 2 The fault is caused by limescale build-up.
  - 3 The cables are damaged due to wrapping too tightly or excessive kinking.
  - 4 The appliance has been used on a voltage supply other than that stamped on the products.
  - 5 Repairs have been attempted by persons other than our service staff (or authorised dealer).
  - 6 The appliance has been used for hire purposes or non domestic use.
  - 7 The appliance is second hand.
  - 8 Morphy Richards reserves the right not to carry out any type of servicing under the guarantee at its discretion.
- This guarantee does not confer any rights other than those expressly set out above and does not cover any claims for consequential loss or damage. This guarantee is offered as an additional benefit and does not affect your statutory rights as a consumer. Morphy Richards products are intended for household use only. See usage limitations within the location safety instructions.

## Disclaimer

Morphy Richards has a policy of continuous improvement in product quality and design. The company, therefore reserves the right to change the specification of its models at any time.



For electrical products sold within the European Community. At the end of the electrical products useful life, it should not be disposed of with household waste.

Please recycle where facilities exist. Check with your Local Authority or retailer for recycling advice in your country

**IF YOU ARE HAVING A PROBLEM  
WITH ONE OF OUR PRODUCTS,  
CALL OUR HELPLINE:**

**UK: 0344 871 0944  
EIRE: 1800 409 119  
SPARES: 0344 873 0710**

**morphy richards**

The After Sales Division  
Morphy Richards Ltd  
Mexborough,  
South Yorkshire,  
England, S64 8AJ

[www.morphyrichards.com](http://www.morphyrichards.com)

