

RN332007 MUK Rev1

morphy richards®

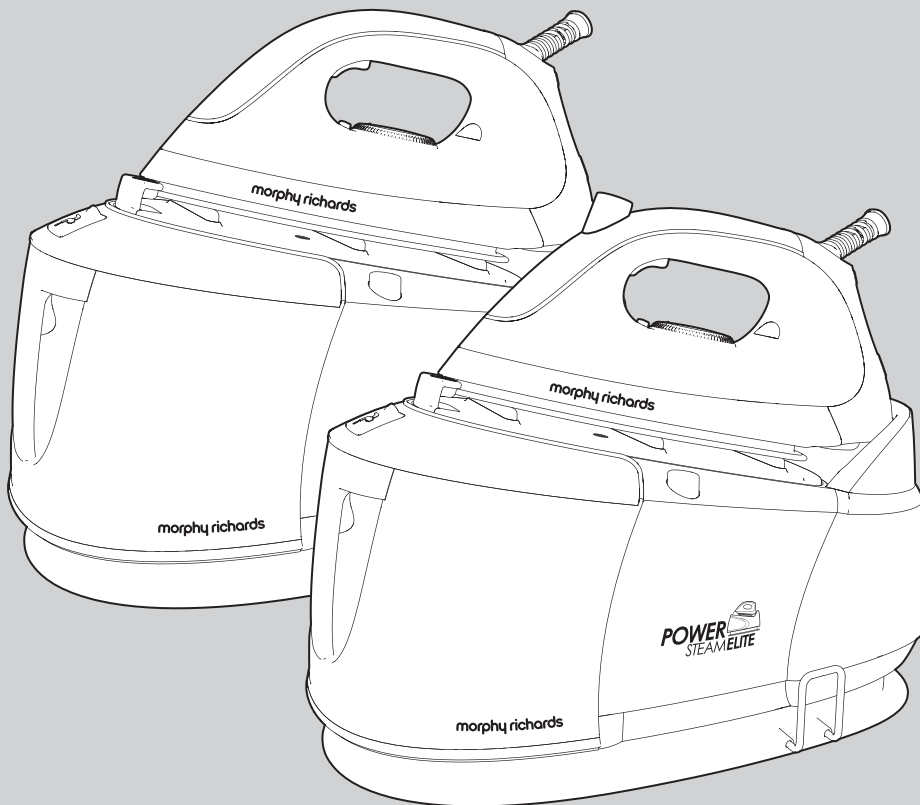
smart ideas for your home



POWER
STEAM ELITE

Steam Generator

Please read and keep these instructions for future use



IMPORTANT: To prevent limescale problems which would not be covered by the guarantee, we recommend the use of a mix of 50% tap water and 50% distilled or demineralised water (available from most large supermarkets).

For competitions, product hints and tips and more join us at



www.morphyrichards.co.uk/blog



www.facebook.com/morphyrichardsuk



[@loveyourmorphy](https://twitter.com/loveyourmorphy)

www.morphyrichards.com

* Register online for your 2 year guarantee. See back of this instruction book for details. (UK and Ireland customers only)

Important safety instructions

The use of any electrical appliance requires the following common sense safety rules. Please read these instructions carefully before using the product.

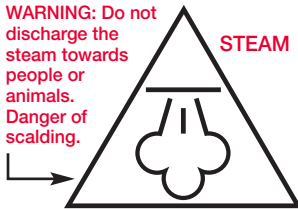
- **WARNING: Disconnect from the mains supply before carrying out any routine maintenance.**
- This appliance can be used by persons with reduced physical, sensory or mental capabilities, or lack of experience and knowledge, if they have been given supervision or instruction concerning the use of the appliance in a safe way and understand the hazards involved.
- Children shall not play with the appliance.
- Keep the appliance out of reach of children when it is energized or cooling down.
- The steam generator must not be left unattended while it is connected to the supply mains.
- The steam generator must be used and rested on a stable surface.
- When placing the iron on the steam generator base or on its heel, ensure that the surface on which the heel or base is placed is stable.
- The steam generator is not to be used if it has been dropped, if there are visible signs of damage or it is leaking.
- The filling aperture may be opened during use, due to the design of the system.
- Do not operate with a damaged steam/supply cord or grommet, it must be replaced by the manufacturer, its service agent or similarly qualified person in order to avoid a hazard.

Personal safety



CAUTION - HOT: Burns can occur from touching hot parts, hot water or steam, or the iron rest plate.

- **WARNING:** Never direct steam at electrical components or fittings. If in doubt about the suitability of steam for cleaning an appliance, contact the appliance manufacturer for advice prior to cleaning.
- **WARNING:** Never touch the plug or cable with wet hands.
- **WARNING:** Nozzles and tools will be hot after use. Allow to cool before attempting to remove.
- **WARNING:** Do not discharge the steam towards people or animals. Danger of scalding.



- To protect against fire, electric shock and personal injury, do not immerse cord, plug or steam generator in water or other liquid.
- The plug should be removed from the wall socket after use, before cleaning, filling or changing the accessories, or carrying out user maintenance.

Location

- Do not use or keep this product outside.
- Do not store the appliance near hot surfaces eg. ovens or heating appliances.

Mains cable

- **WARNING:** A damaged or severed mains cable fitted with a plug should never be connected to the mains supply. It must be destroyed, as a damaged cable becomes hazardous if connected to a power socket.
- Do not let the mains lead come into contact with the hot soleplate of the iron.
- Do not allow the mains lead to become strained.

Product safety

- **WARNING:** Always test on an inconspicuous area first. Never use on materials that can not resist high temperature, such as dralon, natural fur etc.
- Never modify the appliance in any way.

Other safety considerations

- Do not use any chemical detergents, perfumes, alcohol or descaler etc in water.
- Repairs to electrical appliances are only to be undertaken by trained personnel.

- Unprofessional repairs can be dangerous for users.
- Use only genuine Morphy Richards spare parts and accessories.
- The appliance must not be left unattended while connected to the supply mains.
- This appliance is intended for domestic use only. Misuse or use for commercial or any other purpose will render the guarantee invalid.

Electrical requirements

- Check that the voltage on the rating plate of your appliance corresponds with your house electricity supply which must be A.C. (Alternating Current).
- If the socket outlets in your home are not suitable for the plug supplied with this appliance, the plug should be removed by trained authorised personnel and the appropriate one fitted.
- **WARNING:** This appliance must be earthed.
- Should the fuse in the mains plug require changing, a 13 amp BS1362 fuse must be fitted.

Contents

Health and safety 2

Electrical requirements 2

Steam generator overview / Features 4

Control panel overview 5

Temperature guide 6

Location 6

Before use 6

Using the steam generator for steam ironing 7 & 8

Steam boost button (certain models only) 8

Filling 9

Features 9

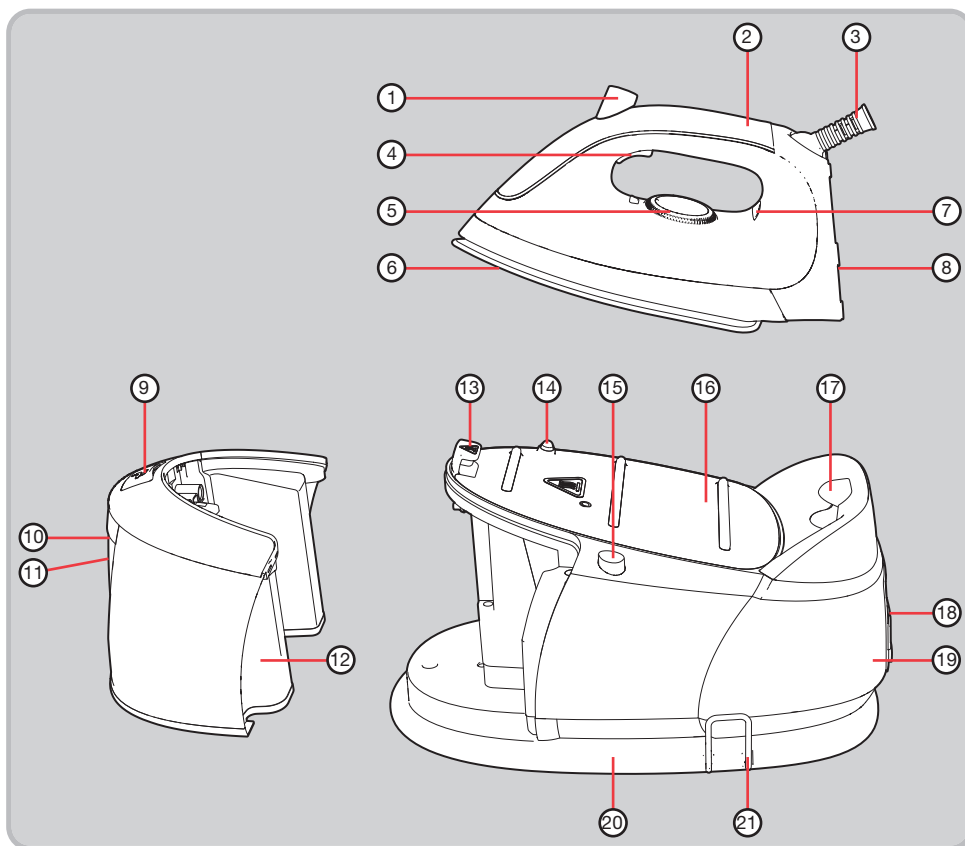
Maintenance 10

Emptying and storing 11

Contact us 11

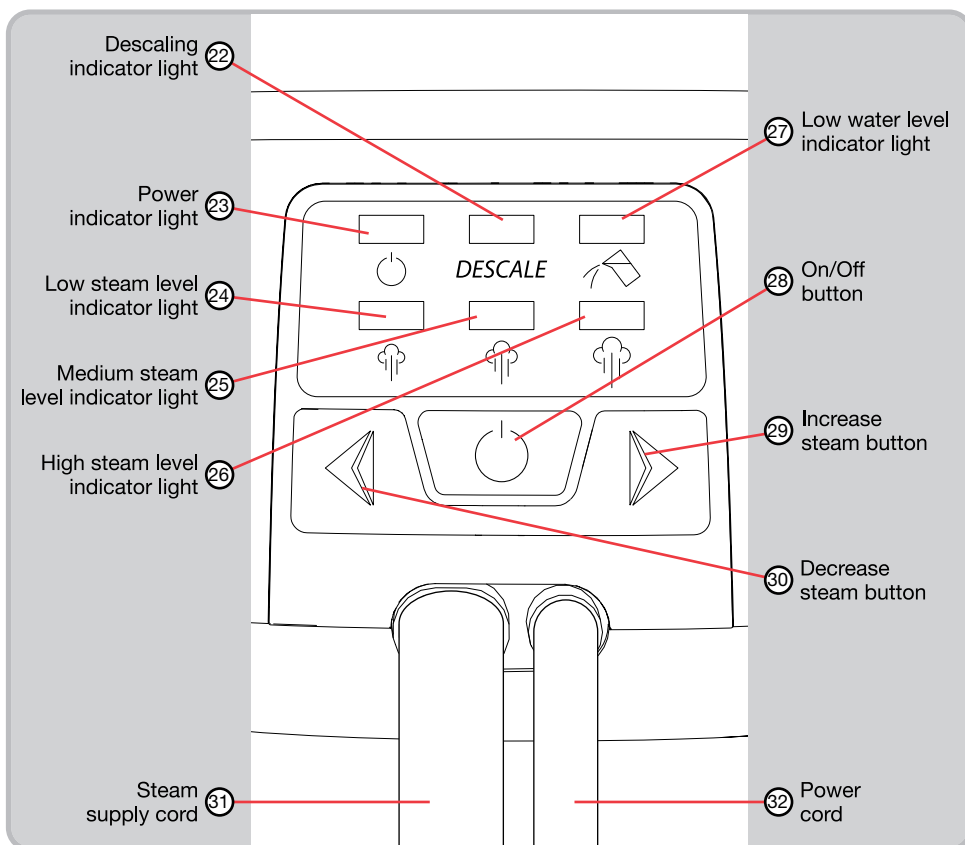
Guarantee 12

Steam generator overview



- | | | |
|--|----------------------------------|--------------------------------|
| (1) Steam boost button (certain models only) | (8) Iron heel | (15) Iron release button |
| (2) Iron handle | (9) Filling cap | (16) Iron rest plate |
| (3) Cable pivot | (10) Water tank handle | (17) Iron rear docking hook |
| (4) Steam trigger | (11) Water tank release button | (18) Control panel (see below) |
| (5) Temperature dial | (12) Detachable water tank | (19) Base unit |
| (6) Soleplate | (13) Iron-to-base locking hook | (20) Cord storage groove |
| (7) Temperature indicator light | (14) Iron-to-base locking button | (21) Cord clamp |

Control panel (18) overview



Descaling indicator light (22)

When the system requires cleaning, the descaling indicator light (22) will illuminate.

On/Off button (28) and Power indicator light (23)

Connect to a mains outlet and press the On/Off Button (28). The power indicator light (23) will illuminate and the low steam level indicator light (24) will flash. To turn off, press and hold the On/Off button (28) for 3 seconds.

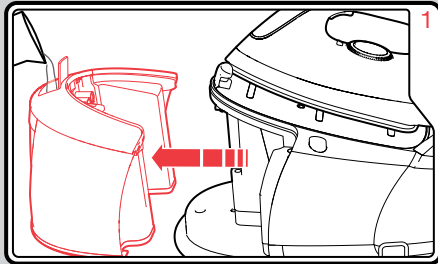
Steam level buttons (29/30)

Press the relevant button to either increase (29) or decrease (30) the steam level. The steam level selected will be displayed by illumination of the relevant steam level indicator light: low (24), medium (25) or high (26). See step 5 of 'Using the Steam Generator for steam ironing' on page 8.

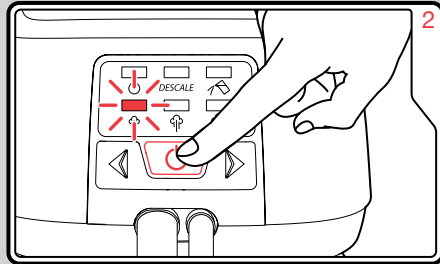
Low water level indicator light (27)

If the water level is too low, the low water level indicator light (27) will illuminate. See 'Filling' on page 9.

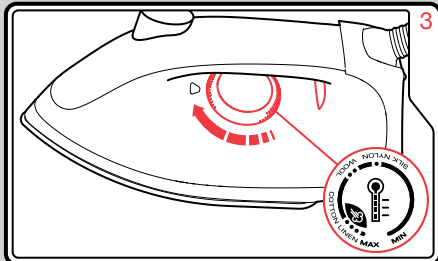
Using the Steam Generator for steam ironing



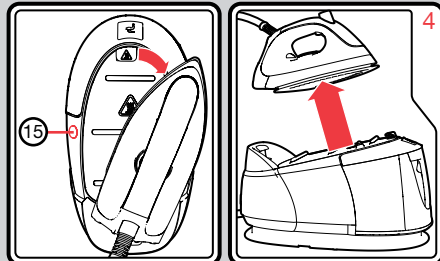
When steam ironing, remove the detachable water tank (12), lift the filling cap (9), and fill with water to the max fill line. Replace the water tank.



Plug the appliance into a mains outlet, you will hear a beep. Press the On/Off button (28), it will beep again and the power indicator light (23) will illuminate and the low steam level indicator light (24) will flash.



Turn the temperature dial (5) to suit the garment (see 'Temperature guide' on page 6). The temperature indicator light (7) illuminates until the temperature is reached. Begin ironing when the temperature indicator light goes out. If you turn the temperature dial down, wait until the temperature indicator light illuminates and then goes off again.

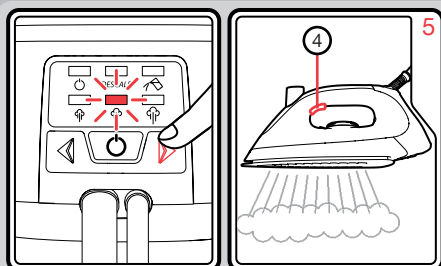


Unlock the iron from its storage position on top of the base unit (19) by pressing and holding the iron release button (15) (marked with a padlock icon) - this enables you to rotate the tip of the soleplate (6) (in a clockwise direction) out from under the iron-to-base locking hook (13) and lift the iron heel (8) away from the rear docking hook (17).

WARNING: To avoid burning yourself if the soleplate is still hot, never press down on the iron-to-base locking button (14) to unlock the iron.

During use, the iron may be rested on the iron rest plate (16) with the soleplate tip on top of the iron-to-base locking hook (13) and the heel slotted on to the rear docking hook.

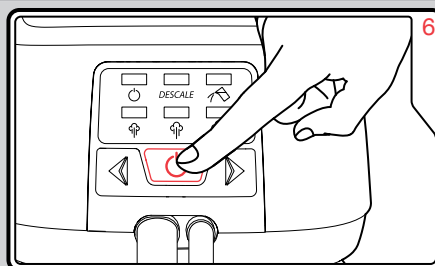
Using the Steam Generator for steam ironing (continued)



Press the relevant button to either increase (29) or decrease (30) the steam level. The selected steam level will be displayed by illumination of the relevant steam level indicator light. The steam level indicator light will stop flashing and illuminate constantly when the selected steam level is reached.

For a strong, continuous flow of steam during ironing, press and hold the steam trigger (4) to deliver steam through the soleplate.

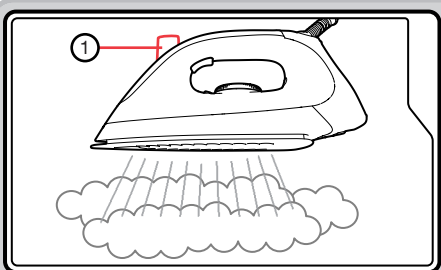
WARNING: The steam supply cord (31) will get hot during use.



When you have finished ironing, turn off the appliance by pressing and holding the On/Off power button (28) for three seconds. A beep will be heard and the power indicator light (23) and steam level indicator (24/25/26) will be extinguished.

Disconnect the plug from the mains outlet.

Steam boost button (certain models only)



The steam boost function is ideal for relaxing the fibres of tougher fabrics (like jeans and linen) and getting rid of those stubborn, hard to reach creases.

To produce a quick, powerful shot of steam during ironing, simply press and release the steam boost button (1).

NOTE: After using the steam boost function, your steam generator iron will require up to 5 seconds to reheat before it can produce a second boost of steam. If you require a high level of constant steam, choose the appropriate steam level and use the steam trigger (4) as instructed above.

Do not combine the two steam functions. Using the two buttons together will interrupt the flow of steam and may result in the constant steam cutting out completely. For optimum steam output, use each steam function separately and as detailed above.

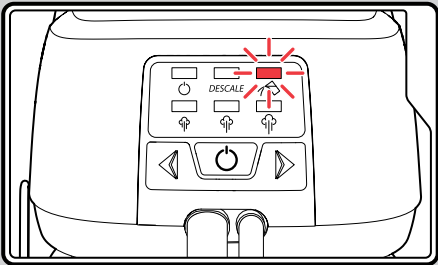
Filling

IN HARD WATER AREAS, WE RECOMMEND A MIX OF 50% TAP WATER AND 50% DISTILLED OR DEMINERALISED WATER.

Never use battery topping up fluid or water containing any substances like starch, sugar, fragrant additives or defrosted water from a refrigerator.

Re-filling during use

If the water level is too low, the low water level indicator light (27) will illuminate, a beep will be heard, and the unit will not produce steam. If this happens, disconnect the water tank and refill with water.



Features

Dry ironing

To use your steam generator as a dry iron only, follow steps 2, 3 and 4 of 'Using the Steam Generator for steam ironing' on page 7. You do not need to put water in the tank or select a steam level. Press either the steam boost button (1) (certain models only) or the steam trigger (4) at least once every 10 minutes, or the product will automatically turn off.

Auto shut-off (certain models only)

If either the steam boost button (1) (certain models only) or the steam trigger (4) goes unused for 10 minutes, the product will automatically turn off for safety and to save energy, and a beep will be heard.

To restart, press the On/Off button (28) (see step 2 of 'Using the Steam Generator for steam ironing' on page 7) and wait for the temperature to rise again.

Steam function

During steaming, small amounts of water may be ejected from the soleplate. This is normal and can be avoided by using the steam for short amounts of time and only when the iron is at the correct temperature (the temperature indicator light (7) on the iron goes out when ready).

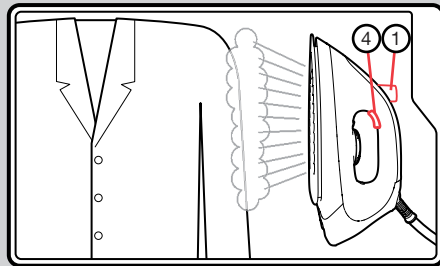
Sudden jolts of the boiler unit can also cause water droplets on the soleplate; therefore, do not move the base unit during ironing.

We recommend for first time ironing that you iron over an old towel.

NOTE: The product may occasionally produce a pumping sound during steam ironing. This is normal and is caused by water being pumped through the steam generator.

Vertical steam

Vertical steam is useful for removing creases from hanging clothes, curtains, upholstery, etc. Hold the iron between 1cm and 2cm away from the item and press either the steam boost button (1) (certain models only) or the steam trigger (4).



WARNING: Do not use the vertical steam feature on clothes that are being worn.

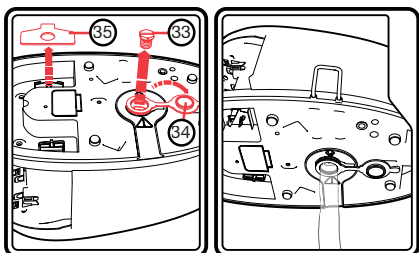
Maintenance

Cleaning the boiler

When the boiler requires descaling, the descaling indicator light (22) will illuminate. When this happens, the boiler must be manually rinsed out with clean water until all the scale is removed. The indicator light will go out only after the scale has been removed.

WARNING: Never remove the boiler screw (33) when the steam generator is hot.

- 1 Unplug the appliance from the mains outlet and leave to cool for two hours.
- 2 Remove the detachable water tank (12) and rest the iron on its heel (8) on a firm surface next to a sink.
- 3 Hold the base unit (19) firmly with both hands and shake well.
- 4 Turn the base unit (19) upside-down and pull back the boiler cap (34). Unscrew the boiler screw (33) with the boiler key (35), which is attached to the underside of the base unit. If the screw is a bit too tight to undo, try using a large screwdriver or a socket and wrench set for more leverage.



- 5 Hold the base unit (19) over the sink, turn the unit the correct way up to empty all water and loose scale from the boiler into the sink.

- 6 Using clean water, refill and empty the boiler repeatedly until all scale has been rinsed out.

Never pour any descaling solution or any other chemicals into the boiler. This will damage the product. Only use clean water.

- 7 Replace the boiler screw, ensuring it is tightened fully. Replace the boiler cap, boiler key, water tank and iron to the base unit.

WARNING: Ensure the boiler is COMPLETELY EMPTY before replacing the boiler screw (33).

TIP: Tip the appliance from side to side while gently shaking to help to empty **all** the water out.

- 9 The descaling indicator light (22) will extinguish the next time you use the product. Please wait for up to one minute whilst it pumps water and registers that the boiler has been cleaned.

If the descaling indicator light does not extinguish, it is likely there is still some water inside the boiler. Let the product cool down fully and pour out all the water again.

To clean a coated soleplate

Do not use scouring powder or solution as this could cause damage to the coating.

If any man-made fibres fuse to the soleplate (6), set the iron at the MAX position and pass it over a clean piece of cotton to draw the deposit off the surface.

To clean the exterior

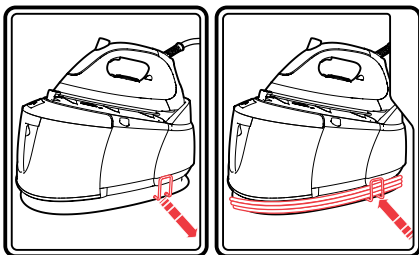
Allow the unit to cool and wipe over with a damp cloth and mild detergent, then wipe dry.

Emptying and storing

Allow the appliance to cool.

Remove the detachable water tank (12) by squeezing the water tank release button (11). Lift the filler cap (9), and empty the water tank. Once the water tank is empty, re-attach it to the base unit (19).

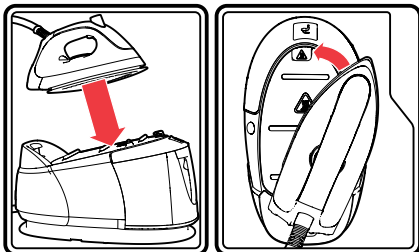
To store, pull the cord clamp (21) outwards. Wrap the power cord (32) and iron steam supply cord (31) around the base unit in the cord storage groove (20). Secure the cord in place with the cord clamp. Avoid kinking of cables, particularly where they meet the base unit.



IMPORTANT: Do not pull too tightly on the iron steam supply cord or on the cable pivot (3) when wrapping the power cord (32) and steam supply cord (31) around the base unit (19). Damage to cables caused by wrapping too tightly will not be covered by the guarantee.

Storing the steam iron

Lock the iron into the storage position on top of the steam generator main body by pushing the soleplate down on the iron-to-base locking button (14) whilst pushing the iron heel (8) onto the rear docking hook (17). The iron should now be at a slight diagonal on the iron rest plate. Pivot the tip of the soleplate (6) under the iron-to-base locking hook (13) until the spring-loaded iron-to-base locking button (14) springs up, securing the iron in place.



Contact us

Helpline

If you are having a problem with your appliance, please call our Helpline, as we are more likely to be able to help than the store you purchased the item from. Please have the product name, model number and serial number to hand when you call to help us deal with your enquiry quicker.

UK Helpline: 0344 871 0944

IRE Helpline: 1800 409 119

Spares: 0344 873 0710

Talk To Us

If you have any questions or comments, or want some great tips to help you get the most out of your products, join us online:

Blog: www.morphyrichards.co.uk/blog

Facebook: www.facebook.com/morphyrichardsuk

Twitter: @loveyoumorphy

Website: www.morphyrichards.com

RN332007 MUK Rev1 07/15

Registering your 2 year guarantee

Your standard 1 year guarantee is extended for an additional 12 months when you register the product within 28 days of purchase with Morphy Richards. If you do not register the product with Morphy Richards within 28 days, your product is guaranteed for 1 year. To validate your 2 year guarantee register with us online at

www.morphyrichards.co.uk

Or call our customer registration line

UK 0344 871 0242

IRE 1800 409 119

N.B. Each qualifying product needs to be registered with Morphy Richards individually.

Please note that the 2 year guarantee is only available in the UK and Ireland. Please refer to the 1 year guarantee for more information.

Your 1 year guarantee

It is important to retain the retailer's receipt as proof of purchase. Staple your receipt to this back cover for future reference.

Please quote the following information if the product develops a fault. These numbers can be found on the base of the product.

Model no.

Serial no.

All Morphy Richards products are individually tested before leaving the factory. In the unlikely event of any appliance proving to be faulty within 28 days of purchase, it should be returned to the place of purchase for it to be replaced.

If the fault develops after 28 days and within 12 months of original purchase, you should contact the Helpline number quoting Model number and Serial number on the product, or write to Morphy Richards at the address shown.

You may be asked to return a copy of proof of purchase.

Subject to the exclusions set out below (see Exclusions), the faulty appliance will then be repaired or replaced as appropriate and dispatched usually within 7 working days of receipt.

If, for any reason, this item is replaced or repaired during the 1 year guarantee period, the guarantee on the new item will be calculated from original purchase date. Therefore it is vital to retain your original till receipt or invoice to indicate the date of initial purchase.

To qualify for the 1 year guarantee, the appliance must have been used according to the instructions supplied. For example, water should be emptied after each use.

Exclusions

Morphy Richards shall not be liable to replace or repair the goods under the terms of the guarantee where:

- 1 The fault has been caused or is attributable to accidental use, misuse, negligent use or used contrary to the manufacturer's recommendations or where the fault has been caused by power surges or damage caused in transit.
 - 2 The fault is caused by limescale build-up.
 - 3 The cables are damaged due to wrapping too tightly or excessive kinking.
 - 4 The appliance has been used on a voltage supply other than that stamped on the products.
 - 5 Repairs have been attempted by persons other than our service staff (or authorised dealer).
 - 6 The appliance has been used for hire purposes or non domestic use.
 - 7 The appliance is second hand.
 - 8 Morphy Richards reserves the right not to carry out any type of servicing under the guarantee at its discretion.
- This guarantee does not confer any rights other than those expressly set out above and does not cover any claims for consequential loss or damage. This guarantee is offered as an additional benefit and does not affect your statutory rights as a consumer. Morphy Richards products are intended for household use only. See usage limitations within the location safety instructions.

Disclaimer

Morphy Richards has a policy of continuous improvement in product quality and design. The company, therefore reserves the right to change the specification of its models at any time.



For electrical products sold within the European Community. At the end of the electrical products useful life, it should not be disposed of with household waste.

Please recycle where facilities exist. Check with your Local Authority or retailer for recycling advice in your country

**IF YOU ARE HAVING A PROBLEM
WITH ONE OF OUR PRODUCTS,
CALL OUR HELPLINE:**

**UK: 0344 871 0944
EIRE: 1800 409 119
SPARES: 0344 873 0710**

morphyrichards

The After Sales Division
Morphy Richards Ltd
Mexborough,
South Yorkshire,
England, S64 8AJ

www.morphyrichards.com

