

morphy richards®

smart ideas for your home



Register online for your 2 year guarantee. See back of this instruction book for details. (UK and Ireland customers only) www.morphyrichards.co.uk



Steam Generator ironing system



Please read and keep these instructions

Getting the best from your new steam generator...

Safety first

Caution must be used when handling this appliance as it does get very hot. Always switch off the unit and allow to cool before cleaning or storing.

Water tank and spray (certain models only)

The water tank can be removed and re-filled at any time during ironing.

Performance

To extend the performance and life of your jet stream generator, ensure that you replace the anti-scale filters regularly.



To improve the life of your new product and to ensure the cleanliness of your clothes, we strongly recommend the use of distilled or demineralised water.



RN42271 MUK Rev 7

For competitions, product hints and tips and much more, join us online at our blog, Facebook or Twitter pages.



www.morphyrichards.co.uk/blog



www.facebook.com/morphyrichardsuk



[@loveyourmorphy](https://twitter.com/loveyourmorphy)

If you have a problem or complaint, please call our dedicated UK based helpline before returning your product to the retailer from where it was purchased.



UK Helpline: 0844 871 0960
Replacement Parts: 0844 873 0726
Ireland Helpline: 1800 409 119



For details of other Morphy Richards products, plus replacement parts and accessories, please see our website:

www.morphyrichards.com

IMPORTANT SAFETY INSTRUCTIONS

- This appliance can be used by children aged from 8 years and above and persons with reduced physical, sensory or mental capabilities or lack of experience or knowledge if they have been given supervision or instruction concerning use of the appliance in a safe way and understand the hazards involved. Children shall not play with the appliance. Cleaning and user maintenance shall not be made by children without supervision.
- Keep the steam generator and its cord out of reach of children less than 8 years of age at all times.
- The steam generator must not be left unattended while it is connected to the supply mains.
- The plug must be removed from the socket-outlet before the water reservoir is filled with water.
- The steam generator must be used and rested on a stable surface.
- When placing the iron on the steam generator base or on its heel, ensure that the surface on which the heel or base is placed is stable.
- The steam generator is not to be used if it has been dropped, if there are visible signs of damage or it is leaking.
- **WARNING: Burns can occur from touching hot metal, hot water or steam, or the iron rest plate.**
- **WARNING: To avoid electric shock, do not immerse appliance in water / liquid.**
- Check that the voltage on the rating plate of your appliance corresponds with your house electricity supply which must be A.C. (Alternating current).
- Do not operate with a damaged steam/supply cord or grommet, it must be replaced by the manufacturer, its service agent or similarly qualified person in order to avoid a hazard.
- Do not let the mains lead come into contact with the hot soleplate of the iron.
- Should the fuse in the mains plug require changing, a 13 amp BS1362 fuse must be fitted.
- **WARNING: This appliance must be earthed.**

LOCATION

Locate the steam generator horizontally on the iron rest plate of your ironing board (if large enough) or on a heat resistant stand at the same height as your ironing board or below it. Always ensure the generator is on a firm surface when ironing.

WARNING: Do not use the product on a surface which could be damaged by heat or steam such as a worktop or a polished wood surface.

If in doubt, contact Morphy Richards.

BEFORE USE

Remove any protective sticker from the soleplate and the base unit, if any.

Unwind and straighten the power cord **8** and supply cord **5**.

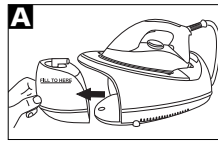
Slide out the water tank **7** and fill (see filling instructions).

Textiles and clothes are supposed to carry ironing instructions. If they don't, you should follow the temperature guide on page 3, but be sure to test the temperature by ironing the hem of the garment or similar discreet area first.

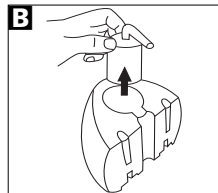
If you turn the control dial down from a hot setting to a cooler setting, wait until the iron temperature has stabilised before you continue ironing.

FILLING

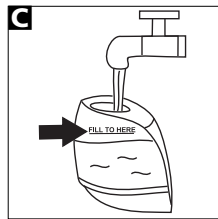
- 1 Place the steam generator on a stable ironing board or table, with the iron resting on its stand.
- 2 Release the detachable water tank by sliding outwards **A**.



- 3 Remove the anti-scale filter by pulling upwards **B**.



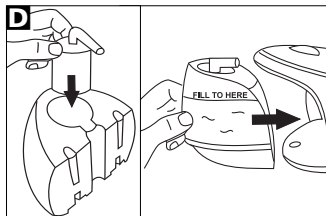
- 4 Fill the tank to the 'fill to here' line with clean tap water **C**.



IN HARD WATER AREAS, THE USE OF DISTILLED OR DEMINERALISED WATER IS RECOMMENDED.

Never use battery topping up fluid or water containing any substances like starch, sugar, fragrant additives or defrosted water from a refrigerator.

- 5 Re-install the anti-scale filter and re-position the water tank on the base unit and push securely into place. Please make sure the tank is secure **D**.



- 6 Always pour out any remaining water after use (see 'Emptying and Storing' on page 6).

Re-filling 'in use'

- 1 When the water level becomes low, the pump begins to emit a loud noise. This is due to air being pumped instead of water and is quite normal.

Refilling can be done whilst the appliance is in operation. It is not necessary to wait for the appliance to cool down.

- 2 Slide out the water tank and fill (see filling instructions).

DRY IRONING

- 1 Connect the appliance to a suitable mains outlet, and switch on the socket.
- 2 Turn the temperature dial on the iron in a clockwise direction, select dot-1, dot-2, or dot-3 according to the recommendation of the garment label.
- 3 The temperature indicator light glows on the iron, indicating that it is switched on.
- 4 When the required temperature is reached, the temperature indicator light on the iron goes off. The iron is ready to use.

It is always a good idea to begin with 'cool' fabrics and work up to higher settings.

An iron heats up quicker than it cools down so you'll save time and electricity.

STEAM IRONING

- 1 Unwind and straighten the power cord **8** and supply cord **5**.
- 2 Slide out the water tank and fill (see filling instructions).

- 3 Connect the appliance to a suitable mains outlet, and switch on the socket. Turn the power switch ⑨ on the base unit to 'I' (on) and the indicator will glow.
- 4 The boiler ready indicator light ⑩ situated above the 'power switch' ⑨ will also illuminate, indicating the boiler is on its heating cycle and will go out when the required temperature is reached.
- 5 Turn the temperature dial on the iron in a clockwise direction, select dot-2 or dot-3 according to the recommendation of the garment label.
- 6 The iron's temperature indicator light ④ goes off when the required temperature is reached.
- 7 Depress the steam button ① for 1 minute to clean the steam generating system (for first time use). It will be accompanied by a clicking noise which is quite normal.
- 8 Begin first time ironing with an old towel. It takes about 1 minute to reach the required temperature.
- 9 Press the steam button ① for steam ironing.
- 10 To switch the unit off, turn the power switch on the base unit to 'O' (OFF).

The spray unit (certain models only)

The spray unit can be used at any time and does not affect any product settings.

Filling the spray unit

The spray feature ⑪ is lightly secured to the handle. To fill the water tank, pull the spray unit forward using the two moulded lugs provided.

Remove the spray bottle ⑫ from the base of the pump and fill with water to the 'MAX' mark.

Re-fit the spray bottle, making sure the arrows (printed black) are in line.

To replace the spray unit

Align the spray unit with the front of the iron.

Fit the bottom location leg into the slot at the front of the handle. Pivot the spray unit towards the iron, making sure it clips firmly in place.

ANTI-SCALE SYSTEM

The anti-scale filter is designed to reduce the build-up of limescale which occurs during steam ironing. This will prolong the working life of your iron. However, please note that the anti-scale filter will not completely stop the natural process of limescale build-up.

Replacing anti-scale filter

How often you need to replace the anti-scale filter depends on how often you use your iron with its steam functions and how 'hard' your water supply is. Water hardness varies greatly from one area to another. For advice on the relative hardness of your water, contact your local water supplier.

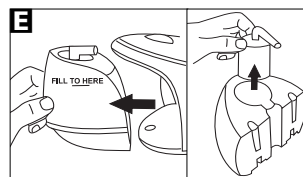
If you iron more or less frequently, then you should alter the interval between refills accordingly.

Replacement anti-scale filters

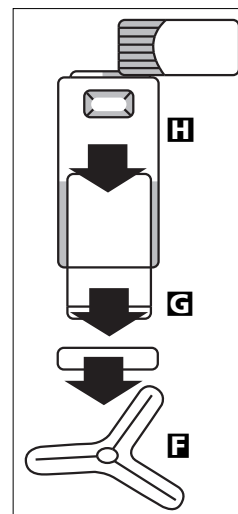
To obtain replacement anti-scale refills, telephone our spares number on: **0844 873 0726**.

- If a new filter is not available, you may continue operating the appliance but scale will build up in the system. Replace the used filter as soon as possible.

- 1 Disconnect the appliance from the mains outlet.
- 2 Slide out the tank and remove the antiscala filter ⑤.



- 3 Pull the plate from the end of the filter ⑥.
- 4 Remove the foam pad ⑦ and slide out the spent antiscala sleeve ⑧.
- 5 Place the refill into the filter, reposition the foam pad and clip the plate onto the filter, making sure it locks in position ⑨.



FEATURES OF YOUR STEAM GENERATOR

Temperature indicator light

The indicator light shows that the iron is warming up. When the required temperature is reached, the light will go out and will cycle on-off during operation.

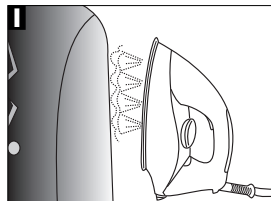
Steam function

During the steaming process, small amounts of water may be ejected from the soleplate. This is normal and can be avoided by using the steam for short amounts of time and only when the iron is at the correct temperature (the indicator light on the iron goes out when ready).

Sudden jolts of the boiler unit can also cause water droplets on the soleplate; therefore, do not move the base unit during ironing. We recommend for the first time ironing that you iron over an old towel.

Vertical steam

Hold the iron in a vertical position between 1cm and 2cm away from the item **I**. Press the steam trigger **⓪**, this will create vertical steam.

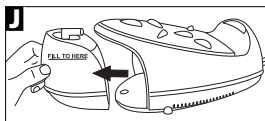


This feature is especially useful for removing creases from hanging clothes, curtains, wall hangings, etc.

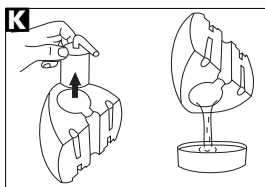
EMPTYING AND STORING

When you have finished ironing, unplug your steam generator.

- 1 Slide out the water tank and remove the anti-scale filter **J**.



- 2 Empty the water in the tank by holding it upside down **K**.



- 3 Replace the anti-scale filter and reinstall the water tank.

Unplug the generator and leave the iron to cool off for 15 minutes minimum. The iron must be placed on the iron rest plate.

The iron and boiler can now be stored together.

MAINTENANCE

To clean a stainless steel soleplate

To keep the soleplate of your iron clean and free of limescale, we recommend that you use one of the gentle chrome, silver or stainless steel cleaners that are generally available. Always follow the manufacturer's instructions. To clean off melted man-made fibres, set the iron at 3-dot position and pass it over a clean piece of cotton which will draw the deposit off the surface.

To clean a ceramic coated soleplate (certain models only)

In the unlikely event of any man-made fibre fusing to the soleplate, set the iron at the MAX position and pass it over a clean piece of cotton which will draw the deposit off the surface.

Do not use scouring powder or solution as this could cause damage to the coating.

IMPORTANT: Do not descale the soleplate with descaling products, proprietary cleaning agents or vinegar when flushing out the soleplate.

To clean the exterior

Allow the steam generator to cool and wipe over with a damp cloth and mild detergent, then wipe with a dry cloth.

HELPLINE

If you have any difficulty with your appliance, do not hesitate to call us.

We are more likely to be able to help than the store from where you bought it.

Please have the following information ready to enable our staff to deal with your query quickly.

- Name of the product
- Model number and Serial number as shown on underside of the appliance.

UK Helpline
0844 871 0960

Replacement Parts
0844 873 0726

Ireland Helpline
1800 409 119

WEBSITE

You may also contact us through our website, or visit the site to browse and purchase appliances, spare parts and accessories from the extensive Morphy Richards range.

www.morphyrichards.com

REGISTERING YOUR TWO YEAR GUARANTEE

Your standard one year guarantee is extended for an additional 12 months when you register the product within 28 days of purchase with Morphy Richards. If you do not register the product with Morphy Richards within 28 days, your product is guaranteed for 1 year. To validate your 2 year guarantee register with us online at www.morphyrichards.co.uk Or call our customer registration line UK: 0844 871 0962 IRE: 1800 409 119

N.B. Each qualifying product needs to be registered with Morphy Richards individually.

Please note that the 2 year guarantee is only available in the UK and Ireland. Please refer to the one year guarantee for more information.

YOUR ONE YEAR GUARANTEE

It is important to retain the retailer's receipt as proof of purchase. Staple your receipt to this back cover for future reference.

Please quote the following information if the product develops a fault. These numbers can be found on the base of the product.

Model no.

Serial no.

All Morphy Richards products are individually tested before leaving the factory. In the unlikely event of any appliance proving to be faulty within 28 days of purchase, it should be returned to the place of purchase for it to be replaced.

Morphy Richards products are intended for household use only.

Morphy Richards has a policy of continuous improvement in product quality and design. The company, therefore, reserves the right to change the specification of its models at any time.

If the fault develops after 28 days and within 12 months of original purchase, you should contact the Helpline number quoting Model number and Serial number on the product, or write to Morphy Richards at the address shown.

You may be asked to return a copy of proof of purchase.

Subject to the exclusions set out below (see Exclusions), the faulty appliance will then be repaired or replaced and dispatched usually within 7 working days of receipt.

If, for any reason, this item is replaced during the 1 year guarantee period, the guarantee on the new item will be calculated from original purchase date. Therefore it is vital to retain your original till receipt or invoice to indicate the date of initial purchase.

To qualify for the 1 year guarantee, the appliance must have been used according to the instructions supplied. For example, water should be emptied after each use.

EXCLUSIONS

Morphy Richards shall not be liable to replace or repair the goods under the terms of the guarantee where:

- 1 The fault has been caused or is attributable to accidental use, misuse, negligent use or used contrary to the manufacturer's recommendations or where the fault has been caused by power surges or damage caused in transit.
- 2 The appliance has been used on a voltage supply other than that stamped on the products.
- 3 Repairs have been attempted by persons other than our service staff (or authorised dealer).

4 The appliance has been used for hire purposes or non domestic use.

5 The appliance is second hand.

6 Morphy Richards reserves the right not to carry out any type of servicing under the guarantee at its discretion.

7 Plastic filters for all Morphy Richards kettles and coffee makers are not covered by the guarantee.

8 Batteries and damage from leakage are not covered by the guarantee.

- This guarantee does not confer any rights other than those expressly set out above and does not cover any claims for consequential loss or damage. This guarantee is offered as an additional benefit and does not affect your statutory rights as a consumer.



For electrical products sold within the European Community. At the end of the electrical products useful life, it should not be disposed of with household waste.

Please recycle where facilities exist. Check with your Local Authority or retailer for recycling advice in your country.

morphy richards®

**The After Sales Division
Morphy Richards Ltd**
Mexborough, South Yorkshire,
England, S64 8AJ

Helplines (office hours)
UK 0844 871 0960
Spare Parts 0844 873 0726
Republic of Ireland 1800 409 119

RN42271 MUK Rev 7 11/12

For details of other Morphy Richards products, plus replacement parts and accessories, please see our website:

www.morphyrichards.com

