

PS4™ | Xbox One | Mobile | PC & Mac®



TURTLE BEACH®
ELITE
PRO

USER GUIDE



Elite Pro Tournament Headset | Elite Pro A.M.P. | Elite Pro T.A.A. |
Elite Pro T.A.C. | Elite Pro Tournament Noise-Cancelling Microphone



Table of Contents

Elite Pro Tournament Headset	P3
Elite Pro A.M.P.	P20
Elite Pro Tactical Audio Adapter	P29
Elite Pro Tactical Audio Controller	P39
Elite Pro Tournament Noise Cancelling Microphone	P60

ELITE PRO TOURNAMENT HEADSET



Congratulations on your purchase of the Elite Pro Tournament headset from Turtle Beach. Turtle Beach brings over 45 years of expertise to transforming your listening experience.



Table of Contents

About the Elite Pro Tournament Headset	P5
Package Contents	P6
Basic Setup	P7
Perfect Fit Setup	P9
PC/Mac® Setup	P11
Xbox One Setup	P12
PS4™ Setup	P13
Troubleshooting Tips	P14
Important Safety Information	P15
Regulatory Compliance Statements	P16
Warranty Information	P19

About the Elite Pro



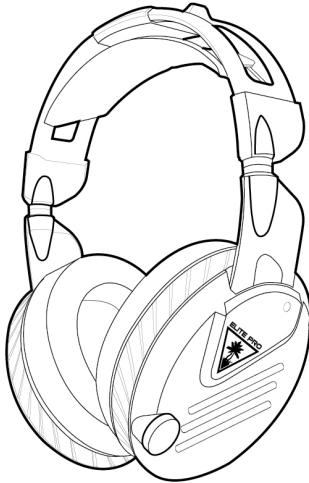
The **Turtle Beach® Elite Pro** is the first gaming headset designed from the ground-up for eSports athletes. The **Elite Pro's** 50mm Nanoclear™ speakers deliver more efficient, crisper audio with less distortion for a game-changing sound experience, while the Pro Gaming Microphone with TruSpeak™ Technology provides crystal-clear chat so your commands are always heard.

The **Elite Pro** also debuts Turtle Beach's unique ComforTec™ Fit System – a revolutionary adjustment system for truly personalized comfort, including AeroFit™ Ear Cushions – where groundbreaking material technologies combine to deliver passive noise isolation with cooling comfort, and the patented ProSpecs™ Glasses Relief System – alleviating ear cushion pressure for gamers who wear glasses. Elite eSports performance, ultimate comfort...this is **Elite Pro**.

Elite Pro Headset

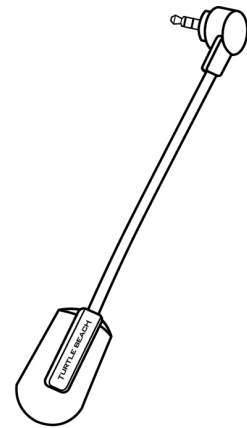
Package Contents

A



Elite Pro Headset

B



Elite Pro Microphone

C



Elite Pro 1.3m Audio Cable with
in-line volume control

Video demonstrations at
turtlebeach.com/elitepro

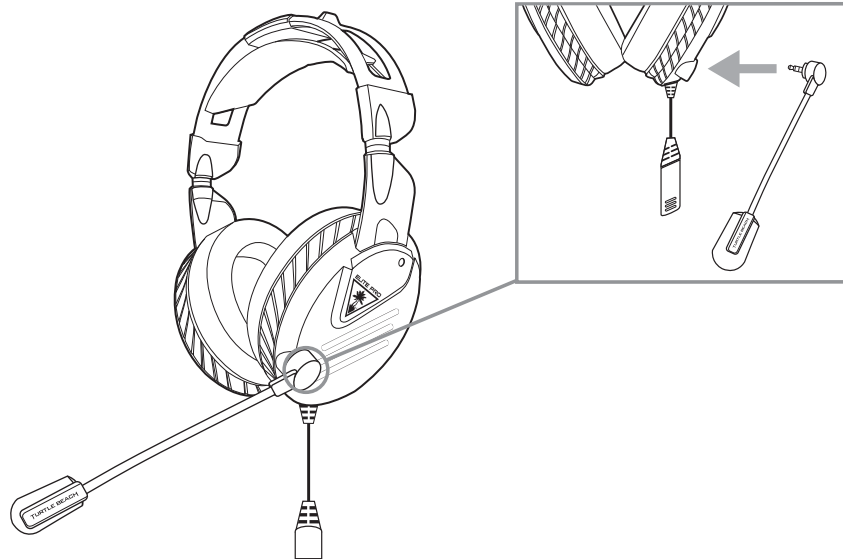
Any questions?
turtlebeach.com/support

Go to Table of Contents 

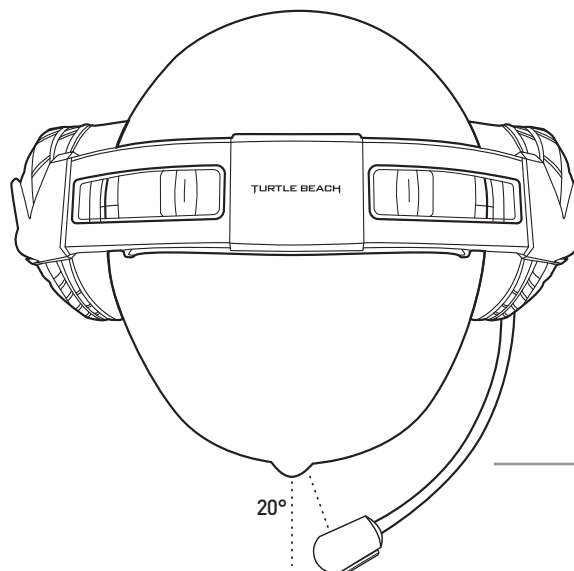
Elite Pro Headset

Basic Setup

Connect the Elite Pro Microphone into the slot on the left earcup of the Elite Pro Headset. Press firmly to ensure a solid connection. Once fully inserted, the microphone should be able to rotate easily within the slot.



The flexible microphone boom allows for adjustment to user preference, however we suggest that the microphone is positioned as seen in the diagram below for best performance.



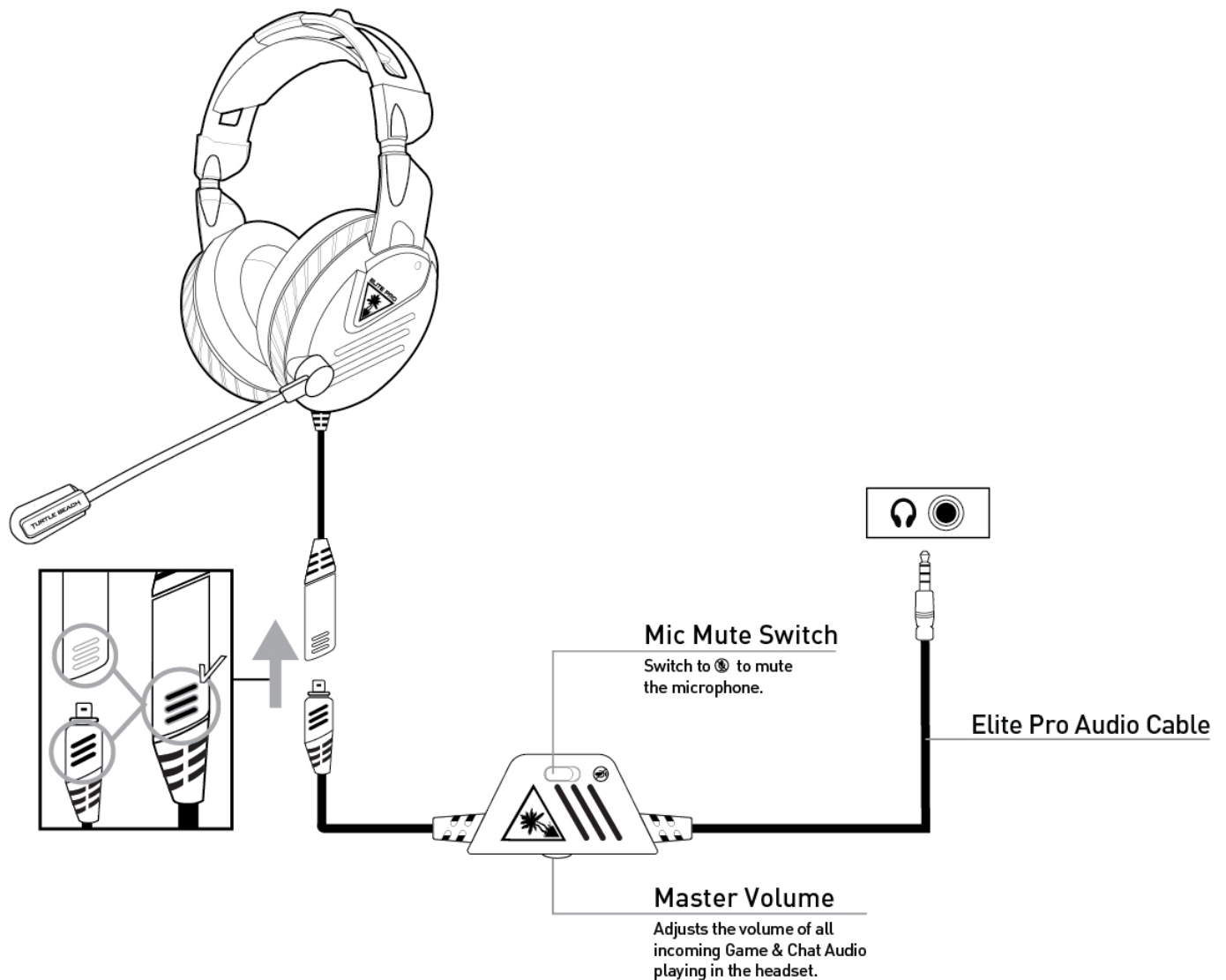
Elite Pro Microphone

Elite Pro Headset

Basic Setup

Connect the Elite Pro 1.3m Audio Cable to the short cable hanging from the Left Earcup of the Elite Pro Headset. Once fully inserted, the Orange stripes on the Elite Pro 1.3m Audio Cable should be visible through the corresponding slots on the connector.

Note: When removing the Elite Pro 1.3m Audio Cable do not disconnect by pulling on the cable. Grip the thicker plug section firmly and pull to separate.

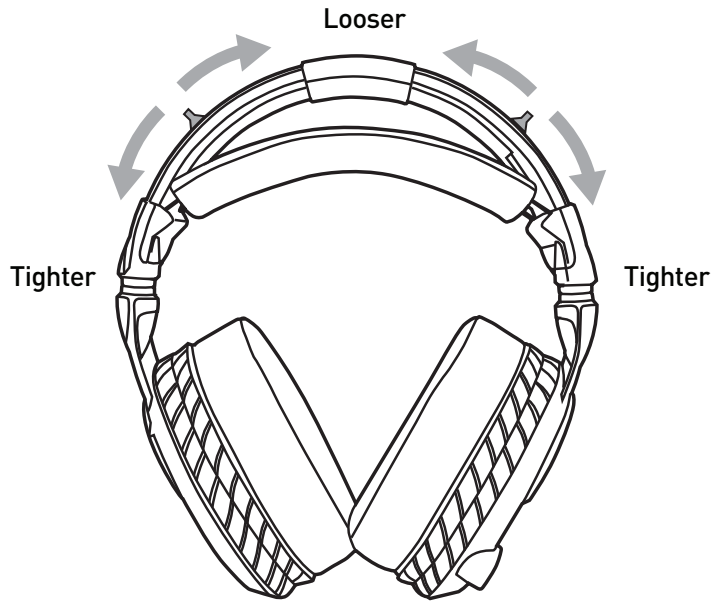


Elite Pro Headset

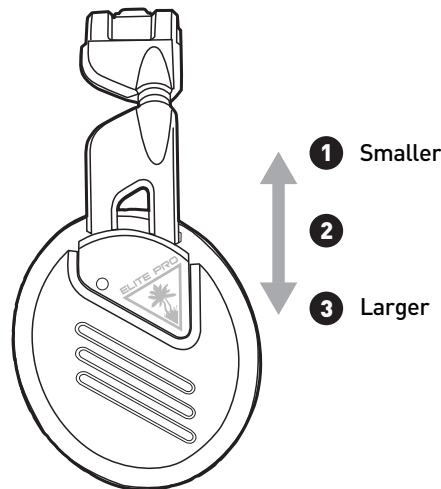
Get the Perfect Fit

The ComforTec™ Fit System provides two methods of adjusting your headset's fit. This allows for independent adjustment of Tension and Size.

While the headset is in your hands, adjust the sliders on the top headband toward the center for a looser fit and toward the earcups for a tighter fit. This is a fine adjustment, so after wearing the headset for a time make small changes to the tension until you find the perfect fit.



The headset also has three different size adjustments that can be changed by pulling up/down on the Earcups. This size can be checked using the indicator on the side of the headset (1-3).



All size/tension adjustments should be made while the headset is not on your head. After adjusting, wear the headset for 15-20 minutes in order to get a feel for whether you need more or less tension.

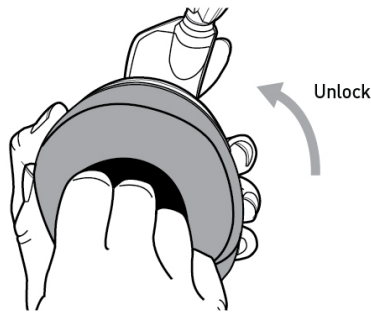
Video demonstration at turtlebeach.com/elitepro

Elite Pro Headset

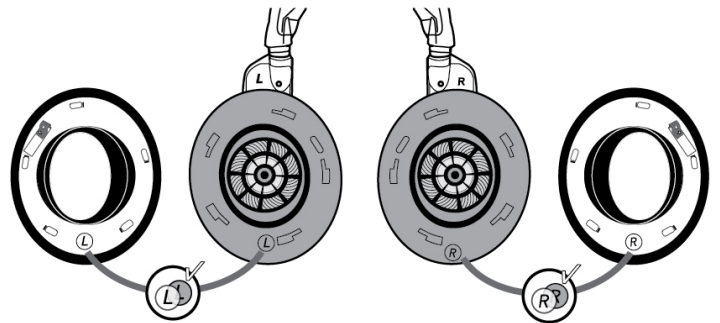
Get the Perfect Fit

For those gamers who wear glasses, headphones can sometimes cause a headache. The Elite Pro utilizes the **ProSpecs™ Glasses Relief System** to prevent this problem. This system creates a relief in the ear cushion material for the eyeglasses frame.

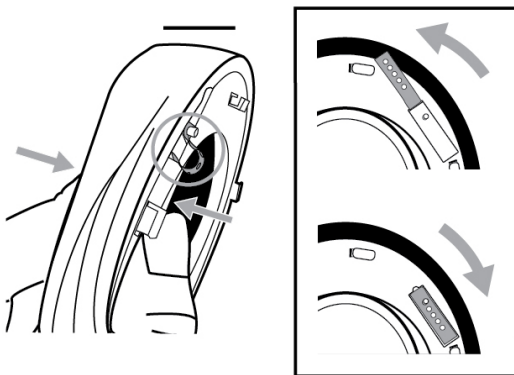
- 1 The ProSpecs Glasses Relief System creates a gap in the ear cushion to help reduce pressure on your Glasses frame. In order to adjust this you must remove the ear cushions. First hold the ear cushion firmly with one hand and the orange ring on your headset with the other. Rotate the ear cushion counter-clockwise to remove.



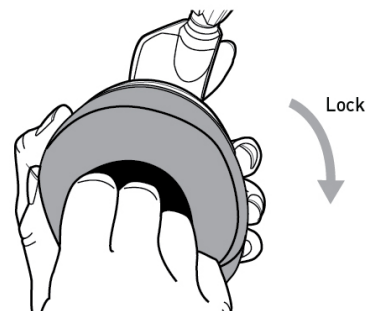
- 3 Make sure to place the ear cushions back on their original sides (L/R).



- 2 Depending on the size of your glasses frame use the tab adjustment to create a deeper or shallower gap. By default the adjustment is set to the shallowest setting, pull up the tab and re-attach to the post on a deeper setting for larger frames.



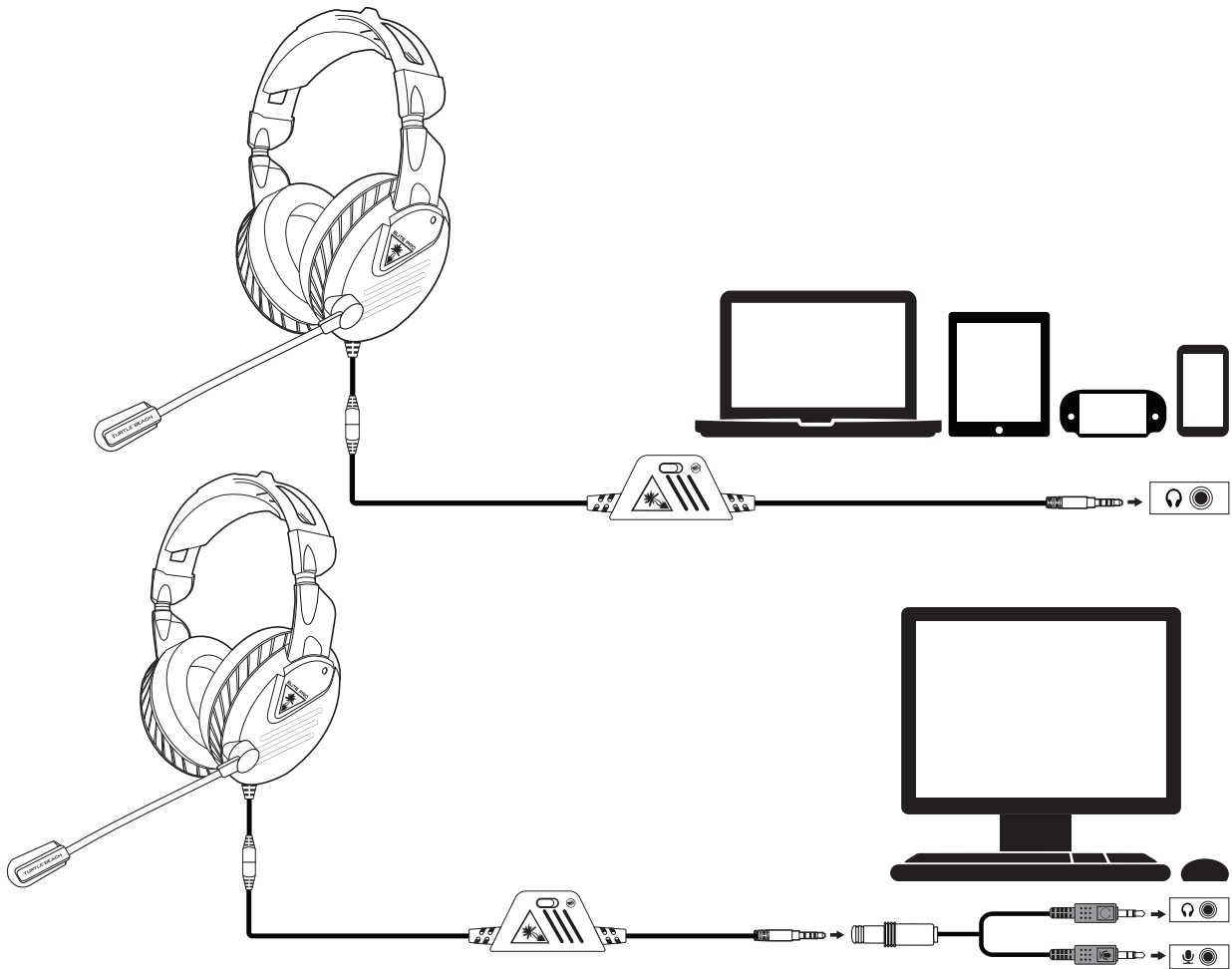
- 4 Rotate clock-wise until there is an audible click, indicating the ear cushion has locked into place.



Video demonstration at turtlebeach.com/elitepro

Elite Pro Headset

PC/ Mac® & Mobile Setup



* PC Splitter Cable not included

Note: If you are using your Elite Pro on a PC that uses separate Headphone & Mic (often color coded - green & pink) jacks, contact our Support Team for more information:
<http://www.turtlebeach.com/contact-support>

Elite Pro Headset

Xbox One Setup

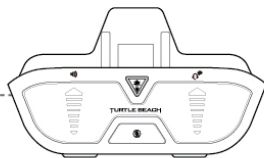


**Sold Separately*

1. Go to Settings >> All Settings >> Kinect & Devices >> Devices & Accessories >> Xbox One Wireless Controller >> Volume
 - a. Set Headset Volume to Maximum
 - b. Set Headset Chat Mixer to your preferred Game/Chat Balance
 - c. Set Mic monitoring to your preferred level

Note :

Official Xbox One Controllers connected via USB Cable and 3rd Party Wired Controllers can result in a sub-par audio experience including static and audio artifacts. We recommend always using official Xbox One Wireless Controllers for the best performance.



Note :

The Elite Pro Headset is compatible with the Xbox One Controller with **3.5mm headset jack**. Purchase the Elite Pro Tactical Audio Adapter from **turtlebeach.com** for use with the original Xbox One Controller.

Elite Pro Headset

PS4™ Setup



**Sold Separately*

1. Go to Settings >> Devices >> Audio Devices
2. Set Input & Output Device to Headset Connected to Controller.
3. Set Output to Headphones to All Audio.
4. Set Volume Control (Headphones) level to maximum.
5. Select Adjust Microphone Level and follow the on-screen instructions to calibrate your microphone.

Troubleshooting Tips

Elite Pro Headset

Issue	Solution
Microphone Problems	<ol style="list-style-type: none">1. Make sure the Elite Pro Microphone Boom is inserted fully into the jack. It should be able to rotate freely. Try disconnecting and reconnecting the boom.2. Check that the Mic Mute Switch on the In-Line controls is not set to "Mute".3. If no one can hear you when playing on console, try connecting the Elite Pro Headset to a phone and making a call. Cover the phone, to make sure the Elite Pro Microphone is being used and not your phone's built in mic. If the phone call is successful, refer to section of the guide covering setup.
Audio Problems	<ol style="list-style-type: none">1. Make sure the Elite Pro Audio Cable is fully connected to the breakaway connector. When inserted fully, the orange stripes should line up with the slots. Try disconnecting and reconnecting the cable.2. If you are still unable to hear any audio on console, try connecting the Elite Pro Headset to a phone and listening to some music. If the music plays normally, refer to the section of the guide covering your particular setup.
No/Inconsistent Chat Audio (Xbox One)	If you are sometimes able to hear teammates/those in your party and other times cannot, it's possible your NAT Type is set to "Strict". This has to do with your personal router settings and not the Elite Pro Headset or console directly. For more information, refer to: http://support.xbox.com/en-US/xbox-one/networking/nat-error-solution
Microphone Not Working with Phone	If your Elite Pro Headset is working fine with most of your personal devices but not a particular phone or tablet, the pinout might not be compatible. Contact Turtle Beach Support to explore additional troubleshooting at support.turtlebeach.com .
Static in Audio or for others in your Party	Official Xbox One Controllers connected via USB Cable and 3rd Party Wired Controllers can result in a sub-par audio experience including static and audio artifacts. We recommend always using official Xbox One Wireless Controllers for the best performance.

If your issue is not resolved by these steps, please visit:
turtlebeach.com/elitepro or **support.turtlebeach.com**

Important Safety Information

To avoid potential damage to the device, always disconnect all cables before transporting it.

WARNING: Permanent hearing damage can occur if a headset is used at high volumes for extended periods of time, so it is important to keep the volume at a safe level. Over time, your ears adapt to loud volume levels, so a level that may not cause initial discomfort can still damage your hearing. If you experience ringing in your ears after listening with the headset, it means the volume is set too loud.

The louder the volume is set, the less time it takes to affect your hearing. So, please take care to listen at moderate levels.

- Before placing a headset on your ears, turn the volume down completely, then slowly increase it to a comfortable level.
- Turn down the volume if you can't hear people speaking near you.
- Avoid turning up the volume to block out noisy surroundings.

Regulatory Compliance Statements for the Elite Pro

Federal Communications Commission (FCC) Compliance Notices

Class B Interference Statement

This equipment has been tested and found to comply with the limits for a Class B digital device, pursuant to Part 15, Subpart B of the FCC Rules. These limits are designed to provide reasonable protection against harmful interference in a residential installation. This equipment generates, uses, and can radiate radio frequency energy and, if not installed and used in accordance with the instructions, may cause harmful interference to radio communications. However, there is no guarantee that interference will not occur in a particular installation. If this equipment does cause harmful interference to radio or television reception, which can be determined by turning the equipment off and on, the user is encouraged to try to correct the interference by one or more of the following measures:

- Reorient or relocate the receiving antenna.
- Increase the separation between the equipment and receiver.
- Connect the equipment into an outlet on a circuit different from that to which the receiver is connected.
- Consult the dealer or an experienced radio/TV technician for help.

FCC Caution:

This device complies with Part 15 of the FCC Rules. Operation is subject to the following two conditions: (1) This device may not cause harmful interference, and (2) this device must accept any interference received, including interference that may cause undesired operation.

Canadian ICES Statements

Canadian Department of Communications Radio Interference Regulations

This digital apparatus does not exceed the Class B limits for radio-noise emissions from a digital apparatus as set out in the Radio Interference Regulations of the Canadian Department of Communications. This Class B digital apparatus complies with Canadian ICES-003.

Règlement sur le brouillage radioélectrique du ministère des Communications

Cet appareil numérique respecte les limites de bruits radioélectriques visant les appareils numériques de classe B prescrites dans le Règlement sur le brouillage radioélectrique du ministère des Communications du Canada. Cet appareil numérique de la Classe B est conforme à la norme NMB-003 du Canada.

European Union and European Fair Trade Association (EFTA) Regulatory Compliance

This equipment may be operated in the countries that comprise the member countries of the European Union and the European Fair Trade Association. These countries, listed below, are referred to as The European Community throughout this document:

AUSTRIA, BELGIUM, BULGARIA, CYPRUS, CZECH REPUBLIC, DENMARK, ESTONIA, FINLAND, FRANCE, GERMANY, GREECE, HUNGARY, IRELAND, ITALY, LATVIA, LITHUANIA, LUXEMBOURG, MALTA, NETHERLANDS, POLAND, PORTUGAL, ROMANIA, SLOVAKIA, SLOVENIA, SPAIN, SWEDEN, UNITED KINGDOM, ICELAND, LICHTENSTEIN, NORWAY, SWITZERLAND

Declaration of Conformity

Marking by this symbol:



Indicates compliance with the Essential Requirements of the EMC Directive of the European Union (2014/30/EU).

This equipment meets the following conformance standards:

Safety: EN 60950-1: 2006 + A11: 2009 + A1: 2010 + A12: 2011 + A2: 2014 (T-Mark License),
IEC 60950-1: 2005 (2nd Edition) + Am 1: 2009 + Am 2 : 2013 (CB Scheme Report/Certificate),
EN 50332-1: 2000, EN 50332-2: 2003, EN 71-3: 2013.

Emissions: EN 55022:2010 + AC: 2011, CISPR 22: 2008

Immunity: EN 55024: 2010, CISPR 24: 2010,
EN 61000-4-2: 2009, EN 61000-4-3: 2006 + A2: 2010, EN 61000-4-8: 2010.

The products are licensed, as required, for additional country specific standards for the International Marketplace. Additional issued licenses available upon request.

Environmental: Low Voltage Directive 2014/35/EU, RoHS 2011/65/EU,
REACH 2006/1907/EC, WEEE 2012/19/EU, Packaging 94/62/EC,
Toys Safety Directive 2009/48/EC

Warning!

This is a Class B product. In a domestic environment, this product may cause radio interference, in which case, the user may be required to take appropriate measures.

Achtung!

Dieses ist ein Gerät der Funkstörgrenzwertklasse B. In Wohnbereichen können bei Betrieb dieses Gerätes Rundfunkstörungen auftreten, in welchen Fällen der Benutzer für entsprechende Gegenmaßnahmen verantwortlich ist.

Attention!

Ceci est un produit de Classe B. Dans un environnement domestique, ce produit risque de créer des interférences radioélectriques, il appartiendra alors à l'utilisateur de prendre les mesures spécifiques appropriées.



This symbol on the product or its packaging indicates that this product must not be disposed of with your other household waste. Instead, it is your responsibility to dispose of your waste equipment by handing it over to a designated collection point for the recycling of waste electrical and electronic equipment. The separate collection and recycling of your waste equipment at the time of disposal will help conserve natural resources and ensure that it is recycled in a manner that protects human health and the environment. For more information about where you can drop off your waste for recycling, please contact your local authority, or where you purchased your product.

Please visit the following URL for a complete copy of the declaration of conformity:

<http://www.turtlebeach.com/homologation>

LIMITED TWO YEAR WARRANTY FOR TURTLE BEACH PRODUCTS:

Voyetra Turtle Beach, Inc. ("VTB") warrants to the original end-user purchaser ("Purchaser") that the retail Turtle Beach hardware product herein ("Product") will be free of defects in materials and workmanship for a period of two years from the date of purchase by the Purchaser ("Warranty Period"). Any Extended Warranty or Service Plans purchased through a Retail store are not honored by VTB. The Warranty refers to the repair/replacement of a defective product during this period and not a refund.

This limited warranty is extended only to the original Purchaser of a new product, which was not sold "AS IS". It is not transferable or assignable to any subsequent purchaser. This limited warranty is applicable only in the country or territory where the Product was purchased from an authorized VTB retailer and does not apply to a Product that has been purchased as used or refurbished or was included as part of a non-VTB product.

WARRANTY SERVICE:

In the USA and CANADA Warranty Service is provided by our Turtle Beach USA offices and in all other Countries it is provided by our local International Distributors when available. Refurbished/Recertified products are sold on an AS IS basis with a 90-day Warranty or less in accordance with each vendor's policy.

VTB does not warrant uninterrupted or error-free operation of the Product and is under no obligation to support the Product for all computer operating systems or future versions of such operating systems.

If a defect should occur during the Warranty Period, Purchaser must contact VTB to obtain a Return Merchandise Authorization ("RMA") number on the basis of the dated purchase receipt. Purchaser will be responsible for shipping costs incurred in returning the defective Product to an authorized VTB service center, or to the repair facility located at VTB's corporate headquarters. VTB will not be responsible for other products or accessories included with the defective Product sent to VTB. The RMA number must be clearly indicated on the outside of the package. Packages without an RMA number will be refused by VTB or its representatives and returned to sender at the sender's expense.

In the event of a defect, Purchaser's sole and exclusive remedy, and VTB's sole liability, is expressly limited to the correction of the defect by adjustment, repair, or replacement of the Product at VTB's sole option and expense. VTB owns all Products it has replaced and all parts removed from repaired Products. VTB uses new and reconditioned parts made by various manufacturers in performing warranty repairs and building replacement products. If VTB repairs or replaces a product, the original Warranty Period is not extended, however, VTB warrants that repaired or replacement parts will be free from defects in material and workmanship for a period of thirty (30) days from the date of repair or replacement, or for the remainder of the Warranty Period, whichever is greater.

This warranty does not apply to any Product that has had its serial number altered, removed or defaced, or any Product damage caused by shipping, improper storage, accident, problems with electrical power, abuse, misuse, neglect, ordinary wear, acts of God (e.g. flood), failure to follow directions, improper maintenance, use not in accordance with product instructions, unauthorized modification or service of the Product or damage resulting from the use of the Product with hardware, software or other products not provided by or specifically recommended by VTB.

NOTES:

- Replacement Parts and accessories that are subject to "wear and tear" such as earpads, mic foam covers, talkback cables, etc. have a three (3) month Warranty.
- Replacement Parts for Discontinued Products are sold on an AS IS basis, they are not supported and come with a 30 day Warranty.

THIS LIMITED WARRANTY IS PURCHASER'S SOLE AND EXCLUSIVE REMEDY AND IS IN LIEU OF ALL OTHER WARRANTIES, EXPRESS OR IMPLIED. TO THE EXTENT PERMITTED BY APPLICABLE LAW, VTB HEREBY DISCLAIMS THE APPLICABILITY OF ANY IMPLIED WARRANTY OF MERCHANTABILITY, FITNESS FOR A PARTICULAR PURPOSE OR USE FOR THE PRODUCT. IF SUCH A DISCLAIMER IS PROHIBITED BY APPLICABLE LAW, THE IMPLIED WARRANTY IS LIMITED TO THE DURATION OF THE FOREGOING LIMITED WRITTEN WARRANTY.

IN NO EVENT SHALL VTB BE LIABLE FOR ANY INDIRECT, INCIDENTAL, SPECIAL, PUNITIVE OR CONSEQUENTIAL DAMAGES, OR DAMAGES, INCLUDING BUT NOT LIMITED TO ANY LOST PROFITS, DATA, OR LOSS OF USE, ANY THIRD PARTY CLAIMS, AND ANY INJURY TO PROPERTY OR BODILY INJURY (INCLUDING DEATH) TO ANY PERSON, ARISING FROM OR RELATING TO THE USE OF THIS PRODUCT OR ARISING FROM BREACH OF THE WARRANTY, BREACH OF CONTRACT, NEGLIGENCE, TORT, OR STRICT LIABILITY, EVEN IF VTB HAS BEEN ADVISED OF THE POSSIBILITY OF SUCH DAMAGES.

This warranty supersedes all prior agreements or understandings, oral or written, relating to the Product, and no representation, promise or condition not contained herein will modify these terms. Some states do not allow the exclusion or limitation of incidental or consequential damages, so the above exclusion or limitation may not apply to you. This warranty gives you specific legal rights. You may also have other rights, which vary from state to state. Any action or lawsuit for breach of warranty must be commenced within eighteen (18) months following the purchase of the Product.

EXCLUSIONS FROM LIMITED WARRANTY:

This Limited Warranty shall not apply and VTB has no liability under this Limited Warranty if the Turtle Beach Product:

- is used for commercial purposes such as "LAN, Call Centers" (including rental or lease);
- is modified or tampered with;
- is damaged by Acts of God, power surge, misuse, abuse, negligence, accident, wear and tear, mishandling, misapplication, or other causes unrelated to defective materials or workmanship;
- serial number is defaced, altered or removed;
- is not used in accordance with the documentation and use instructions; or
- is repaired, modified or altered by other than authorized repair centers.
- is no longer available because it was discarded.

PS4™



TURTLE BEACH®

ELITE PRO

A.M.P. FOR PLAYSTATION® 4*

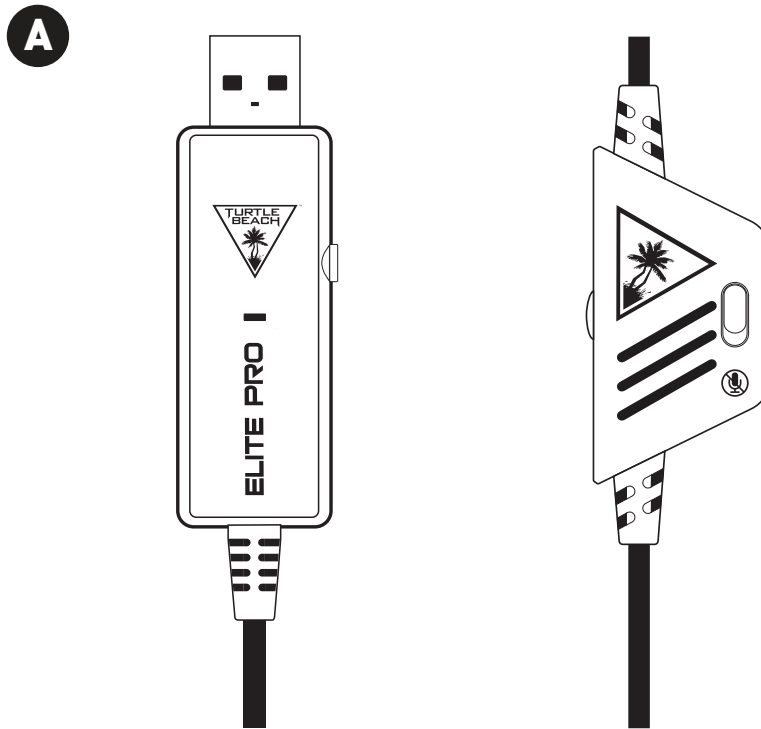
**For use with the Elite Pro Headset Only*



Table of Contents

About the Elite Pro Tournament A.M.P.	P22
PS4™ Setup	P23
Troubleshooting tips	P24
Regulatory Compliance Statements	P25
Warranty Information	P27

ELITE PRO A.M.P.*



Elite Pro A.M.P.

Elite Pro A.M.P. for PlayStation® 4 – For even more powerful audio, plus Mic Monitoring.

Elite Pro A.M.P. Features



Amplified Audio- The Elite Pro A.M.P. amplifies the audio coming from the PS4™ for a fuller, more enjoyable sound.



Mic Monitoring- Hear yourself in the headset to prevent shouting. Adjusting the Master Volume control on the in-line affects this level.

***Elite Pro A.M.P. (Requires the Elite Pro Headset)**

Video demonstrations at
turtlebeach.com/eliteproamp

Any questions?
turtlebeach.com/support

Go to Table of Contents 

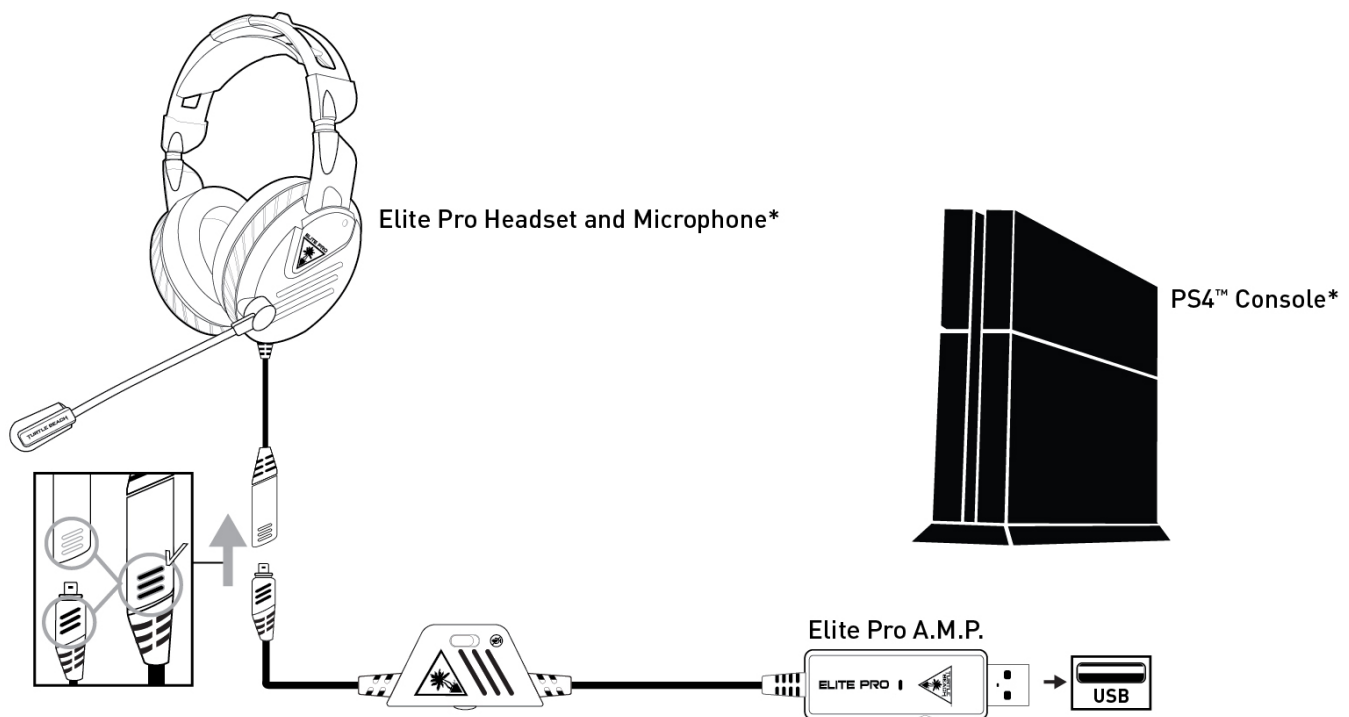
Elite Pro A.M.P.

PS4™ Setup

The Elite Pro A.M.P. is designed for use with the Elite Pro Headset. First remove the Elite Pro 1.3m Audio Cable from the Elite Pro Headset (if connected).

When disconnecting this cable, hold onto the thicker plug section; do not pull using the cable itself.

Connect the Elite Pro A.M.P. to the short cable hanging from the Left Earcup of the Elite Pro Headset. Once fully inserted, the orange stripes on the Elite Pro A.M.P. Cable should be visible through the corresponding slots on the connector.



**Sold Separately*

1. Go to Settings >> Devices >> Audio Devices
2. Select USB Device for Input & Output Device
3. Set Output to Headphones to All Audio
4. Set Volume Control (Headphones) level to maximum
5. Select Adjust Microphone Level and follow the on-screen instructions to calibrate your microphone

PS3™ Note: Using your Elite Pro A.M.P. on PlayStation® 3 requires an additional RCA splitter cable. Please contact our Support Team for more information: <http://support.turtlebeach.com>

Troubleshooting Tips

Elite Pro A.M.P.

Issue	Solution
Microphone Problems	<ol style="list-style-type: none">1. In order to use the Microphone through the Elite Pro A.M.P., the device must be selected as the Input/Output Device in the PS3/PS4 Settings.2. Both the PS3/PS4 have an "Adjust Microphone Level" screen, when on this screen all speech will be played back to you on a short delay. Use this screen to confirm that your Microphone is functioning normally.
No PS3™ Game Audio	In order to use your Elite Pro on PS3™, an RCA Splitter Cable is required. Contact our Support Team for more information at http://www.turtlebeach.com/contact-support
Mic Monitor Level	The Microphone Monitor Level is adjusted directly by the Master Volume Control on the In-Line control. This ensures that your Microphone Level is always heard over the Game/Chat Audio playing through your headphones.
Low PS4™ Volume	Make sure that PS4™ Audio Settings are properly configured. Refer to PS4™ Setup .

If your issue is not resolved by these steps, please visit:
turtlebeach.com/elitepro or turtlebeach.com/support

Regulatory Compliance Statements for the Elite Pro AMP for Playstation 4®

Federal Communications Commission (FCC) Compliance Notices

Class B Interference Statement

This equipment has been tested and found to comply with the limits for a Class B digital device, pursuant to Part 15, Subpart B of the FCC Rules. These limits are designed to provide reasonable protection against harmful interference in a residential installation. This equipment generates, uses, and can radiate radio frequency energy and, if not installed and used in accordance with the instructions, may cause harmful interference to radio communications. However, there is no guarantee that interference will not occur in a particular installation. If this equipment does cause harmful interference to radio or television reception, which can be determined by turning the equipment off and on, the user is encouraged to try to correct the interference by one or more of the following measures:

- Reorient or relocate the receiving antenna.
- Increase the separation between the equipment and receiver.
- Connect the equipment into an outlet on a circuit different from that to which the receiver is connected.
- Consult the dealer or an experienced radio/TV technician for help.

FCC Caution:

This device complies with Part 15 of the FCC Rules. Operation is subject to the following two conditions: (1) This device may not cause harmful interference, and (2) this device must accept any interference received, including interference that may cause undesired operation.

Canadian ICES Statements

Canadian Department of Communications Radio Interference Regulations

This digital apparatus does not exceed the Class B limits for radio-noise emissions from a digital apparatus as set out in the Radio Interference Regulations of the Canadian Department of Communications. This Class B digital apparatus complies with Canadian ICES-003.

Règlement sur le brouillage radioélectrique du ministère des Communications

Cet appareil numérique respecte les limites de bruits radioélectriques visant les appareils numériques de classe B prescrites dans le Règlement sur le brouillage radioélectrique du ministère des Communications du Canada. Cet appareil numérique de la Classe B est conforme à la norme NMB-003 du Canada.

European Union and European Fair Trade Association (EFTA) Regulatory Compliance

Declaration of Conformity

Marking by this symbol:



Indicates compliance with the Essential Requirements of the EMC Directive of the European Union (2004/108/EC). This equipment meets the following conformance standards:

Safety: EN 60950-1: 2006 + A11: 2009 + A1: 2010 + A12: 2011 (T-Mark License).
IEC 60950-1: 2005 (2nd Edition) + Am 1: 2009 (CB Scheme Report/Certificate),
EN 50332-1: 2000, EN50332-2: 2003, EN 71-3: 2013.

Also Licensed for Standards:

UL 60950-1: 2007 R12.11, CAN/CSA-C22.2 No. 60950-1-07 + A1: 2011

Additional licenses issued for specific countries available on request

Emissions: EN 55022: 2010, CISPR 22: 2008

Immunity: EN 55024: 2010, CISPR 24: 2010
EN 61000-4-2: (2009), EN 61000-4-3: (2010), EN 61000-4-8: (2010)

The products are licensed, as required, for additional country specific standards for the International Marketplace. Additional issued licenses available upon request.

Environmental: Low Voltage Directive 2006/95/EC, RoHS 2011/65/EU,
REACH 2006/1907/EC, WEEE 2012/19/EU, Packaging 94/62/EC,
Toys Safety Directive 2009/48/EC

Warning!

This is a Class B product. In a domestic environment, this product may cause radio interference, in which case, the user may be required to take appropriate measures.

Achtung!

Dieses ist ein Gerät der Funkstörgrenzwertklasse B. In Wohnbereichen können bei Betrieb dieses Gerätes Rundfunkstörungen auftreten, in welchen Fällen der Benutzer für entsprechende Gegenmaßnahmen verantwortlich ist.

Attention!

Ceci est un produit de Classe B. Dans un environnement domestique, ce produit risque de créer des interférences radioélectriques, il appartiendra alors à l'utilisateur de prendre les mesures spécifiques appropriées.



This symbol on the product or its packaging indicates that this product must not be disposed of with your other household waste. Instead, it is your responsibility to dispose of your waste equipment by handing it over to a designated collection point for the recycling of waste electrical and electronic equipment. The separate collection and recycling of your waste equipment at the time of disposal will help conserve natural resources and ensure that it is recycled in a manner that protects human health and the environment. For more information about where you can drop off your waste for recycling, please contact your local authority, or where you purchased your product.

Please visit the following URL for a complete copy of the declaration of conformity:

<http://www.turtlebeach.com/homologation>

LIMITED TWO YEAR WARRANTY FOR TURTLE BEACH PRODUCTS:

Voyetra Turtle Beach, Inc. ("VTB") warrants to the original end-user purchaser ("Purchaser") that the retail Turtle Beach hardware product herein ("Product") will be free of defects in materials and workmanship for a period of two years from the date of purchase by the Purchaser ("Warranty Period"). Any Extended Warranty or Service Plans purchased through a Retail store are not honored by VTB. The Warranty refers to the repair/replacement of a defective product during this period and not a refund.

This limited warranty is extended only to the original Purchaser of a new product, which was not sold "AS IS". It is not transferable or assignable to any subsequent purchaser. This limited warranty is applicable only in the country or territory where the Product was purchased from an authorized VTB retailer and does not apply to a Product that has been purchased as used or refurbished or was included as part of a non-VTB product.

WARRANTY SERVICE:

In the USA and CANADA Warranty Service is provided by our Turtle Beach USA offices and in all other Countries it is provided by our local International Distributors when available. Refurbished/Recertified products are sold on an AS IS basis with a 90-day Warranty or less in accordance with each vendor's policy.

VTB does not warrant uninterrupted or error-free operation of the Product and is under no obligation to support the Product for all computer operating systems or future versions of such operating systems.

If a defect should occur during the Warranty Period, Purchaser must contact VTB to obtain a Return Merchandise Authorization ("RMA") number on the basis of the dated purchase receipt. Purchaser will be responsible for shipping costs incurred in returning the defective Product to an authorized VTB service center, or to the repair facility located at VTB's corporate headquarters. VTB will not be responsible for other products or accessories included with the defective Product sent to VTB. The RMA number must be clearly indicated on the outside of the package. Packages without an RMA number will be refused by VTB or its representatives and returned to sender at the sender's expense.

In the event of a defect, Purchaser's sole and exclusive remedy, and VTB's sole liability, is expressly limited to the correction of the defect by adjustment, repair, or replacement of the Product at VTB's sole option and expense. VTB owns all Products it has replaced and all parts removed from repaired Products. VTB uses new and reconditioned parts made by various manufacturers in performing warranty repairs and building replacement products. If VTB repairs or replaces a product, the original Warranty Period is not extended, however, VTB warrants that repaired or replacement parts will be free from defects in material and workmanship for a period of thirty (30) days from the date of repair or replacement, or for the remainder of the Warranty Period, whichever is greater.

This warranty does not apply to any Product that has had its serial number altered, removed or defaced, or any Product damage caused by shipping, improper storage, accident, problems with electrical power, abuse, misuse, neglect, ordinary wear, acts of God (e.g. flood), failure to follow directions, improper maintenance, use not in accordance with product instructions, unauthorized modification or service of the Product or damage resulting from the use of the Product with hardware, software or other products not provided by or specifically recommended by VTB.

NOTES:

- Replacement Parts and accessories that are subject to "wear and tear" such as earpads, mic foam covers, talkback cables, etc. have a three (3) month Warranty.
- Replacement Parts for Discontinued Products are sold on an AS IS basis, they are not supported and come with a 30 day Warranty.

THIS LIMITED WARRANTY IS PURCHASER'S SOLE AND EXCLUSIVE REMEDY AND IS IN LIEU OF ALL OTHER WARRANTIES, EXPRESS OR IMPLIED. TO THE EXTENT PERMITTED BY APPLICABLE LAW, VTB HEREBY DISCLAIMS THE APPLICABILITY OF ANY IMPLIED WARRANTY OF MERCHANTABILITY, FITNESS FOR A PARTICULAR PURPOSE OR USE FOR THE PRODUCT. IF SUCH A DISCLAIMER IS PROHIBITED BY APPLICABLE LAW, THE IMPLIED WARRANTY IS LIMITED TO THE DURATION OF THE FOREGOING LIMITED WRITTEN WARRANTY.

IN NO EVENT SHALL VTB BE LIABLE FOR ANY INDIRECT, INCIDENTAL, SPECIAL, PUNITIVE OR CONSEQUENTIAL DAMAGES, OR DAMAGES, INCLUDING BUT NOT LIMITED TO ANY LOST PROFITS, DATA, OR LOSS OF USE, ANY THIRD PARTY CLAIMS, AND ANY INJURY TO PROPERTY OR BODILY INJURY (INCLUDING DEATH) TO ANY PERSON, ARISING FROM OR RELATING TO THE USE OF THIS PRODUCT OR ARISING FROM BREACH OF THE WARRANTY, BREACH OF CONTRACT, NEGLIGENCE, TORT, OR STRICT LIABILITY, EVEN IF VTB HAS BEEN ADVISED OF THE POSSIBILITY OF SUCH DAMAGES.

This warranty supersedes all prior agreements or understandings, oral or written, relating to the Product, and no representation, promise or condition not contained herein will modify these terms. Some states do not allow the exclusion or limitation of incidental or consequential damages, so the above exclusion or limitation may not apply to you. This warranty gives you specific legal rights. You may also have other rights, which vary from state to state. Any action or lawsuit for breach of warranty must be commenced within eighteen (18) months following the purchase of the Product.

EXCLUSIONS FROM LIMITED WARRANTY:

This Limited Warranty shall not apply and VTB has no liability under this Limited Warranty if the Turtle Beach Product:

- is used for commercial purposes such as "LAN, Call Centers" (including rental or lease);
- is modified or tampered with;
- is damaged by Acts of God, power surge, misuse, abuse, negligence, accident, wear and tear, mishandling, misapplication, or other causes unrelated to defective materials or workmanship;
- serial number is defaced, altered or removed;
- is not used in accordance with the documentation and use instructions; or
- is repaired, modified or altered by other than authorized repair centers.
- is no longer available because it was discarded.

Xbox One



TURTLE BEACH®
ELITE
PRO

TACTICAL AUDIO ADAPTER



Elite Pro Tactical Audio Adapter for Xbox One

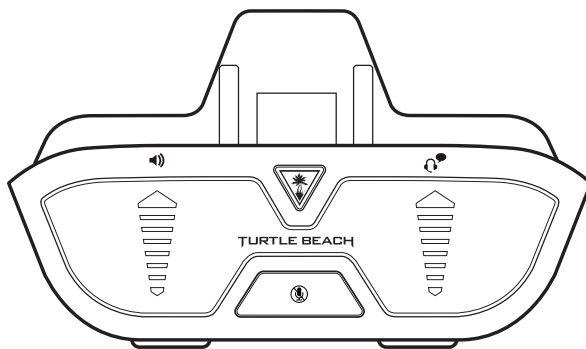


Table of Contents

About the Elite Pro Tactical Audio Adapter	P31
Xbox One Setup	P32
Controls & Features	P33
Troubleshooting tips	P34
Regulatory Compliance Statements	P35
Warranty Information	P37

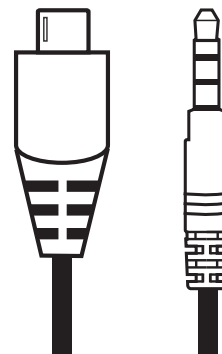
ELITE PRO TACTICAL AUDIO ADAPTER FOR XBOX ONE

A



Elite Pro Tactical Audio Adapter

B



Elite Pro 1.1m Audio Cable

Elite Pro Tactical Audio Adapter for Xbox One – Including *Superhuman Hearing™*, *Dynamic Chat Boost™*, *Bass Boost*, *Mic Monitoring* and Turtle Beach signature audio presets.

Video demonstrations at
turtlebeach.com/taa

Any questions?
turtlebeach.com/support

Go to Table of Contents 

Elite Pro Tactical Audio Adapter

Xbox One Setup

The Elite Pro Tactical Audio Adapter is designed for use with the Elite Pro Headset but can be used with other standard 3.5mm 4-pole headsets. First remove the Elite Pro 1.3m Audio Cable from the Elite Pro Headset (if connected).

When disconnecting this cable, hold onto the thicker plug section; do not pull using the cable itself.

Connect the Elite Pro 1.1m Audio Cable to the short cable hanging from the Left Earcup of the Elite Pro Headset.

The Elite Pro 1.1m Audio Cable can now be connected straight into the front of the Tactical Audio Adapter. Next the Tactical Audio Adapter should connect into your preferred Xbox One Controller.



If prompted, follow the on-screen instructions to update your controller.

**Sold Separately*

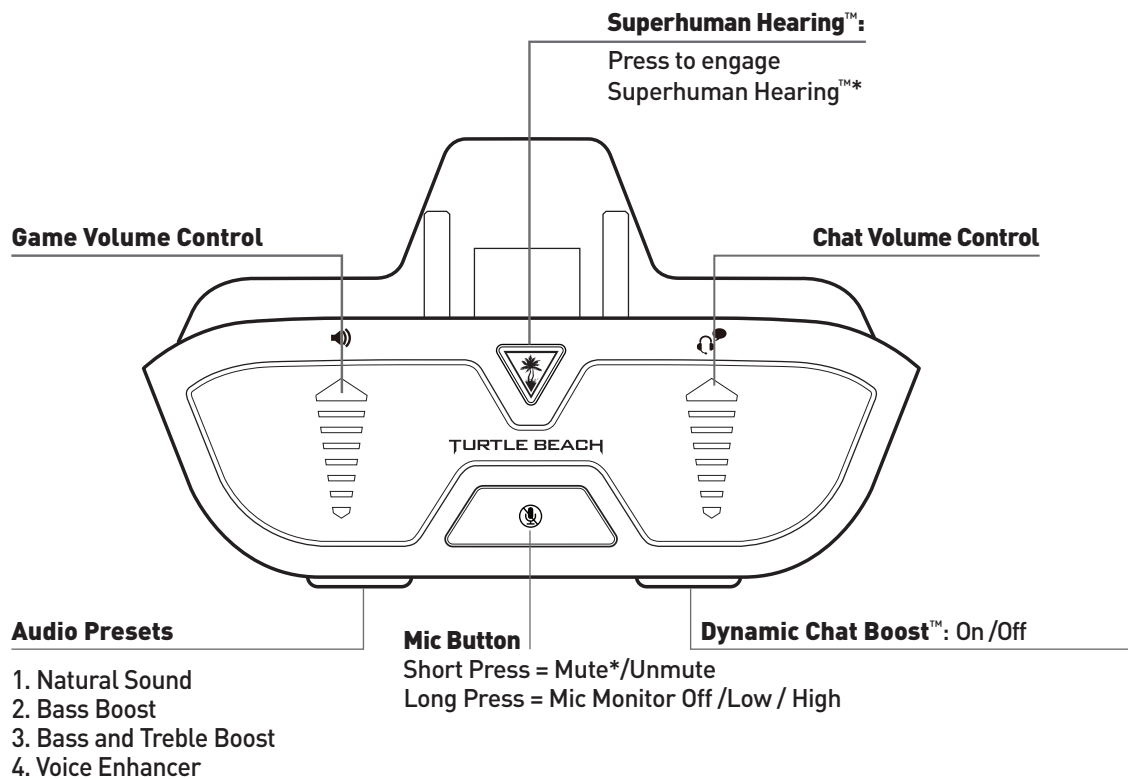
Note:

Official Xbox One Controllers connected via USB Cable and 3rd Party Wired Controllers can result in a sub-par audio experience including static and audio artifacts. We recommend always using official Xbox One Wireless Controllers for the best performance.

The Tactical Audio Adapter is not compatible with some third party controllers, specifically those that use multiple rear paddles. These paddles can prevent the Adapter from fully connecting to the controller.

Elite Pro Tactical Audio Adapter

Tactical Audio Adapter Controls



*LEDs pulse when features are active

Elite Pro Tactical Audio Adapter Features



Superhuman Hearing™ - Boosts essential game sounds like quiet footsteps coming up from behind you, or the subtle sound of a gun reloading.



Dynamic Chat Boost™ - Automatically boosts Chat Audio so it can be heard over even the most intense games.**



Audio Presets - Customize your audio with Turtle Beach signature audio presets.



Independent Game & Chat Volume Control - Separate controls for Game and Chat Volume make finding the perfect balance easy



Variable Mic Monitoring - Hear yourself in the headset at your preferred level to avoid shouting.

Xbox One Controller Note: If prompted, update your Xbox One Controller. Older controllers may require a Micro USB Cable for this update process.

If you do not have this cable, contact our Support Team for more information.

<http://www.turtlebeach.com/contact-support>

**When Chat Volume is already set to the maximum level, Dynamic Chat Boost will have no effect.

[Go to Table of Contents](#)

Troubleshooting Tips

Elite Pro Tactical Audio Adapter

Issue	Solution
3rd-Party Controllers	The Elite Pro Tactical Audio Adapter is designed for use with official Microsoft Xbox One Controllers. Use with 3rd-party controllers is not Supported.
No Audio	<p>Perform a power-cycle on your Xbox One.</p> <ul style="list-style-type: none"> - Shut down your Xbox One. - Disconnect the Elite Pro Tactical Audio Adapter from the Xbox One Controller. - Unplug any USB cable going to the controller and turn off the controller. - IMPORTANT: Unplug the Xbox One console's power cord, let everything sit for a minute, then... - Connect the AC power cord to the Xbox One console (Keep headset disconnected.) - Power up the Xbox One and sign into your profile. - Note: If your account is automatically signed in, sign out and then sign back in again. - Assign the Xbox One Controller to your profile: (Settings > All Settings > Kinect and Devices > Devices and Accessories > Xbox One Wireless Controller > Assign to Someone > Select your profile) <p>Once the headset is assigned, enter a game or chat and test the headset.</p>
Dynamic Chat Boost	Dynamic Chat Boost automatically raises Chat Audio over the level of Game Audio when it would otherwise become washed out. If the Chat Volume is already at/near the maximum level the effect will be less noticeable.
No/Inconsistent Chat Audio (Xbox One)	If you are sometimes able to hear teammates/those in your party and other times cannot, it's possible your NAT Type is set to "Strict". This has to do with your personal router settings and not the Elite Pro Headset or console directly. Refer to http://support.xbox.com/en-US/xbox-one/networking/nat-error-solution
Wired Controller / Charging Controller effect	Sometimes charging a controller while using the Elite Pro Tactical Audio Adapter will cause negative effects on audio quality. This is most noticeable in a pitch-shift of the indication tones played by the Audio Adapter. Disconnecting the charging cable and power-cycling the controller will resolve this effect. Alternatively, removing the rechargeable batteries while connected via cable may work in some cases

If your issue is not resolved by these steps, please visit:
turtlebeach.com/elitepro or turtlebeach.com/support

Regulatory Compliance Statements for the Elite Pro Tactical Audio Adapter for Xbox One.

Federal Communications Commission (FCC) Compliance Notices

Class B Interference Statement

This equipment has been tested and found to comply with the limits for a Class B digital device, pursuant to Part 15, Subpart B of the FCC Rules. These limits are designed to provide reasonable protection against harmful interference in a residential installation. This equipment generates, uses, and can radiate radio frequency energy and, if not installed and used in accordance with the instructions, may cause harmful interference to radio communications. However, there is no guarantee that interference will not occur in a particular installation. If this equipment does cause harmful interference to radio or television reception, which can be determined by turning the equipment off and on, the user is encouraged to try to correct the interference by one or more of the following measures:

- Reorient or relocate the receiving antenna.
- Increase the separation between the equipment and receiver.
- Connect the equipment into an outlet on a circuit different from that to which the receiver is connected.
- Consult the dealer or an experienced radio/TV technician for help.

FCC Caution:

This device complies with Part 15 of the FCC Rules. Operation is subject to the following two conditions: (1) This device may not cause harmful interference, and (2) this device must accept any interference received, including interference that may cause undesired operation.

Canadian ICES Statements

Canadian Department of Communications Radio Interference Regulations

This digital apparatus does not exceed the Class B limits for radio-noise emissions from a digital apparatus as set out in the Radio Interference Regulations of the Canadian Department of Communications. This Class B digital apparatus complies with Canadian ICES-003.

Règlement sur le brouillage radioélectrique du ministère des Communications

Cet appareil numérique respecte les limites de bruits radioélectriques visant les appareils numériques de classe B prescrites dans le Règlement sur le brouillage radioélectrique du ministère des Communications du Canada. Cet appareil numérique de la Classe B est conforme à la norme NMB-003 du Canada.

European Union and European Fair Trade Association (EFTA) Regulatory Compliance Declaration of Conformity

Marking by this symbol:



Indicates compliance with the Essential Requirements of the EMC Directive of the European Union (2004/108/EC). This equipment meets the following conformance standards:

Safety: EN 60950-1: 2006 + A11: 2009 + A1: 2010 + A12: 2011 (T-Mark License).
IEC 60950-1: 2005 (2nd Edition) + Am 1: 2009 (CB Scheme Report/Certificate),
EN 50332-1: 2000, EN50332-2: 2003, EN 71-3: 2013.

Also Licensed for Standards:

UL 60950-1: 2007 R12.11, CAN/CSA-C22.2 No. 60950-1-07 + A1: 2011

Additional licenses issued for specific countries available on request

Emissions: EN 55022: 2010, CISPR 22: 2008

Immunity: EN 55024: 2010, CISPR 24: 2010
EN 61000-4-2: (2009), EN 61000-4-3: (2010), EN 61000-4-8: (2010)

The products are licensed, as required, for additional country specific standards for the International Marketplace. Additional issued licenses available upon request.

Environmental: Low Voltage Directive 2006/95/EC, RoHS 2011/65/EU,
REACH 2006/1907/EC, WEEE 2012/19/EU, Packaging 94/62/EC,
Toys Safety Directive 2009/48/EC

Warning!

This is a Class B product. In a domestic environment, this product may cause radio interference, in which case, the user may be required to take appropriate measures.

Achtung!

Dieses ist ein Gerät der Funkstörgrenzwertklasse B. In Wohnbereichen können bei Betrieb dieses Gerätes Rundfunkstörungen auftreten, in welchen Fällen der Benutzer für entsprechende Gegenmaßnahmen verantwortlich ist.

Attention!

Ceci est un produit de Classe B. Dans un environnement domestique, ce produit risque de créer des interférences radioélectriques, il appartiendra alors à l'utilisateur de prendre les mesures spécifiques appropriées.



This symbol on the product or its packaging indicates that this product must not be disposed of with your other household waste. Instead, it is your responsibility to dispose of your waste equipment by handing it over to a designated collection point for the recycling of waste electrical and electronic equipment. The separate collection and recycling of your waste equipment at the time of disposal will help conserve natural resources and ensure that it is recycled in a manner that protects human health and the environment. For more information about where you can drop off your waste for recycling, please contact your local authority, or where you purchased your product.

Please visit the following URL for a complete copy of the declaration of conformity:

<http://www.turtlebeach.com/homologation>

LIMITED TWO YEAR WARRANTY FOR TURTLE BEACH PRODUCTS:

Voyetra Turtle Beach, Inc. ("VTB") warrants to the original end-user purchaser ("Purchaser") that the retail Turtle Beach hardware product herein ("Product") will be free of defects in materials and workmanship for a period of two years from the date of purchase by the Purchaser ("Warranty Period"). Any Extended Warranty or Service Plans purchased through a Retail store are not honored by VTB. The Warranty refers to the repair/replacement of a defective product during this period and not a refund.

This limited warranty is extended only to the original Purchaser of a new product, which was not sold "AS IS". It is not transferable or assignable to any subsequent purchaser. This limited warranty is applicable only in the country or territory where the Product was purchased from an authorized VTB retailer and does not apply to a Product that has been purchased as used or refurbished or was included as part of a non-VTB product.

WARRANTY SERVICE:

In the USA and CANADA Warranty Service is provided by our Turtle Beach USA offices and in all other Countries it is provided by our local International Distributors when available. Refurbished/Recertified products are sold on an AS IS basis with a 90-day Warranty or less in accordance with each vendor's policy.

VTB does not warrant uninterrupted or error-free operation of the Product and is under no obligation to support the Product for all computer operating systems or future versions of such operating systems.

If a defect should occur during the Warranty Period, Purchaser must contact VTB to obtain a Return Merchandise Authorization ("RMA") number on the basis of the dated purchase receipt. Purchaser will be responsible for shipping costs incurred in returning the defective Product to an authorized VTB service center, or to the repair facility located at VTB's corporate headquarters. VTB will not be responsible for other products or accessories included with the defective Product sent to VTB. The RMA number must be clearly indicated on the outside of the package. Packages without an RMA number will be refused by VTB or its representatives and returned to sender at the sender's expense.

In the event of a defect, Purchaser's sole and exclusive remedy, and VTB's sole liability, is expressly limited to the correction of the defect by adjustment, repair, or replacement of the Product at VTB's sole option and expense. VTB owns all Products it has replaced and all parts removed from repaired Products. VTB uses new and reconditioned parts made by various manufacturers in performing warranty repairs and building replacement products. If VTB repairs or replaces a product, the original Warranty Period is not extended, however, VTB warrants that repaired or replacement parts will be free from defects in material and workmanship for a period of thirty (30) days from the date of repair or replacement, or for the remainder of the Warranty Period, whichever is greater.

This warranty does not apply to any Product that has had its serial number altered, removed or defaced, or any Product damage caused by shipping, improper storage, accident, problems with electrical power, abuse, misuse, neglect, ordinary wear, acts of God (e.g. flood), failure to follow directions, improper maintenance, use not in accordance with product instructions, unauthorized modification or service of the Product or damage resulting from the use of the Product with hardware, software or other products not provided by or specifically recommended by VTB.

NOTES:

- Replacement Parts and accessories that are subject to "wear and tear" such as earpads, mic foam covers, talkback cables, etc. have a three (3) month Warranty.
- Replacement Parts for Discontinued Products are sold on an AS IS basis, they are not supported and come with a 30 day Warranty.

THIS LIMITED WARRANTY IS PURCHASER'S SOLE AND EXCLUSIVE REMEDY AND IS IN LIEU OF ALL OTHER WARRANTIES, EXPRESS OR IMPLIED. TO THE EXTENT PERMITTED BY APPLICABLE LAW, VTB HEREBY DISCLAIMS THE APPLICABILITY OF ANY IMPLIED WARRANTY OF MERCHANTABILITY, FITNESS FOR A PARTICULAR PURPOSE OR USE FOR THE PRODUCT. IF SUCH A DISCLAIMER IS PROHIBITED BY APPLICABLE LAW, THE IMPLIED WARRANTY IS LIMITED TO THE DURATION OF THE FOREGOING LIMITED WRITTEN WARRANTY.

IN NO EVENT SHALL VTB BE LIABLE FOR ANY INDIRECT, INCIDENTAL, SPECIAL, PUNITIVE OR CONSEQUENTIAL DAMAGES, OR DAMAGES, INCLUDING BUT NOT LIMITED TO ANY LOST PROFITS, DATA, OR LOSS OF USE, ANY THIRD PARTY CLAIMS, AND ANY INJURY TO PROPERTY OR BODILY INJURY (INCLUDING DEATH) TO ANY PERSON, ARISING FROM OR RELATING TO THE USE OF THIS PRODUCT OR ARISING FROM BREACH OF THE WARRANTY, BREACH OF CONTRACT, NEGLIGENCE, TORT, OR STRICT LIABILITY, EVEN IF VTB HAS BEEN ADVISED OF THE POSSIBILITY OF SUCH DAMAGES.

This warranty supersedes all prior agreements or understandings, oral or written, relating to the Product, and no representation, promise or condition not contained herein will modify these terms. Some states do not allow the exclusion or limitation of incidental or consequential damages, so the above exclusion or limitation may not apply to you. This warranty gives you specific legal rights. You may also have other rights, which vary from state to state. Any action or lawsuit for breach of warranty must be commenced within eighteen (18) months following the purchase of the Product.

EXCLUSIONS FROM LIMITED WARRANTY:

This Limited Warranty shall not apply and VTB has no liability under this Limited Warranty if the Turtle Beach Product:

- is used for commercial purposes such as "LAN, Call Centers" (including rental or lease);
- is modified or tampered with;
- is damaged by Acts of God, power surge, misuse, abuse, negligence, accident, wear and tear, mishandling, misapplication, or other causes unrelated to defective materials or workmanship;
- serial number is defaced, altered or removed;
- is not used in accordance with the documentation and use instructions; or
- is repaired, modified or altered by other than authorized repair centers.
- is no longer available because it was discarded.

Xbox One | PS4™ | PC



TURTLE BEACH®
ELITE
PRO

TACTICAL AUDIO CONTROLLER



*Elite Pro Tactical Audio Controller for
Xbox One, PS4™ and PC*

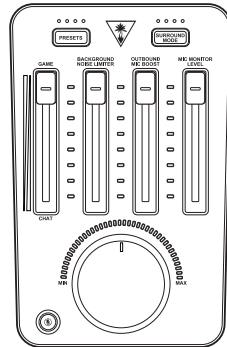


Table of Contents

About the Elite Pro Tactical Audio Controller	P41
Standard Setup	P43
Xbox One Setup	P44
PC Setup	P45
PS3™ Setup	P46
PS4™ Setup	P47
Controls & Features	P48
Troubleshooting Tips	P54
Regulatory Compliance Statements	P55
Warranty Information	P57

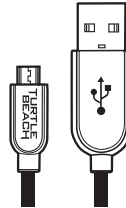
ELITE PRO TACTICAL AUDIO CONTROLLER

A



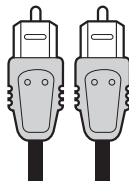
Tactical
Audio Controller

B



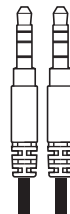
Power Cable (USB Mini)¹

C



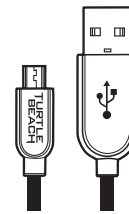
Digital Optical Cable

D



AUX / Stream / Xbox One Chat Cable

E



Programming
Cable (USB Micro)²

¹ In order to comply with regulatory standards, the Power Cable used (USB Mini) cannot be longer than 3 meters.

² Always keep the Micro USB Port Cap installed when not in use.

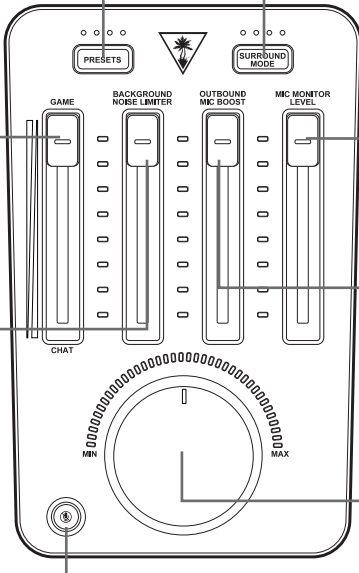
The Elite Pro T.A.C. is the most powerful audio controller designed for e-sports, combining cutting-edge audio technology like *DTS™* Headphone:X 7.1 Surround Sound and *Superhuman Hearing™* with Turtle Beach's incredibly powerful chat and microphone tuning tools, giving eSports athletes everything they need to win.

Video demonstrations at
turtlebeach.com/tac

Any questions?
turtlebeach.com/support

Go to Table of Contents 

About the Tactical Audio Controller



Presets:
Adjust the sound of your game audio with Turtle Beach Signature Audio presets

Surround Mode:
Adjust your virtual surroundings with DTS Headphone:X 7.1 Surround Sound modes

Game/Chat Balance:
Set the perfect balance of Game and Chat Audio so that you can hear your teammates while focusing on the game. Move this fader to the top to only hear Game Audio. Move it to the bottom for only Chat.

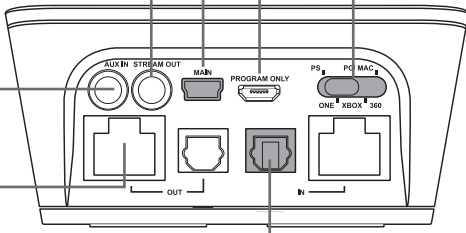
Background Noise Limiter:
Turn this up so that your teammates don't have to listen to your roommate vacuuming. The higher the setting the less ambient noise your mic will pick up. Make sure to test out this setting and calibrate it to your environment.*

Mic Mute:
Press to mute your outgoing Mic. A LED will glow red to indicate no one can hear you. The Mic Mute LED in the bottom left corner of the TAC indicates whether others can hear you. While speaking the Mic Mute LED should glow Blue. If it is not, turn down the Background Noise Limiter.

Mic Monitor Level:
Adjust how loud your voice plays in the headset so that you don't end up yelling. Doesn't effect your voice level to others.

Outbound Mic Boost:
Tweak this to adjust the level at which others hear you. This setting will be dependent on which Elite Pro Microphone and console you are playing with.

Master Volume:
Control the level of everything playing through your headset. Press to Mute all paths, both incoming and outgoing. This means you won't hear the game & chat, and that no-one will hear you, an emergency stop of sorts.



Main:
Your primary USB port, this should always be connected to power your device and pass audio on some platforms.

Stream Out:
Output your game Game/Chat/Mic audio to your PC/Mac for recording/streaming. This will output audio to the exact levels you have adjusted it for listening in your headset, excluding mic monitor. The volume of your voice will be based upon the Outbound Mic Boost.

Aux In:
Mix in music from your Phone or Tablet. Or use for phone calls with your smartphone.

Local Chat In/Out:
Connections for Tournament Chat

Program Only:
This is used to update your unit when new firmware/presets become available. Download the Ear Force Audio Hub at turtlebeach.com/elitepro

Mode Switch:
Always make sure you're set to the right mode!
This is important for optimal performance.

Digital Optical In/Out:
Connections for your Console Game audio. Use the Digital Optical Out to pass audio straight through to another device.

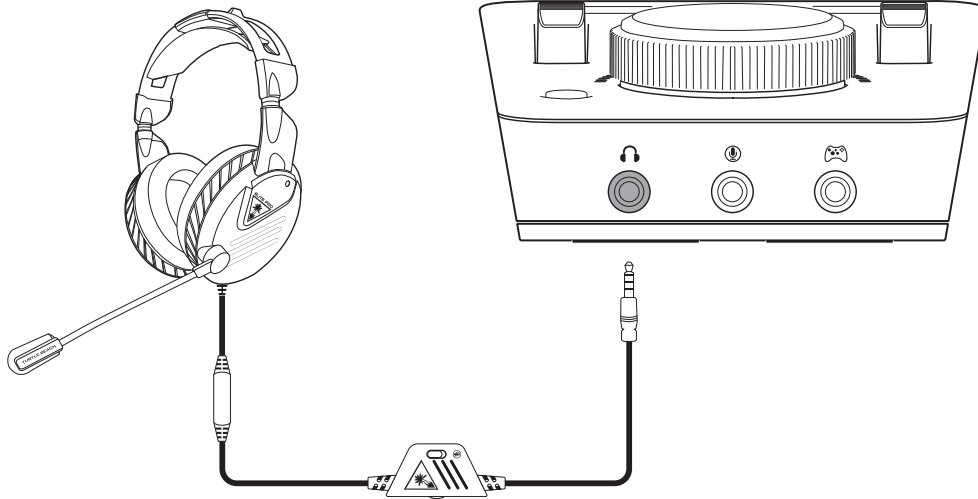
*The mic mute LED will light up blue when the microphone detects noise and it will be white when it doesn't.

You can use this to properly adjust the "Background Noise Limiter" on the TAC. Increase the noise limiter one notch at a time until the flashing blue stops. Once it does, that means your microphone is no longer picking up background sounds, such as your keyboard, breath, etc.

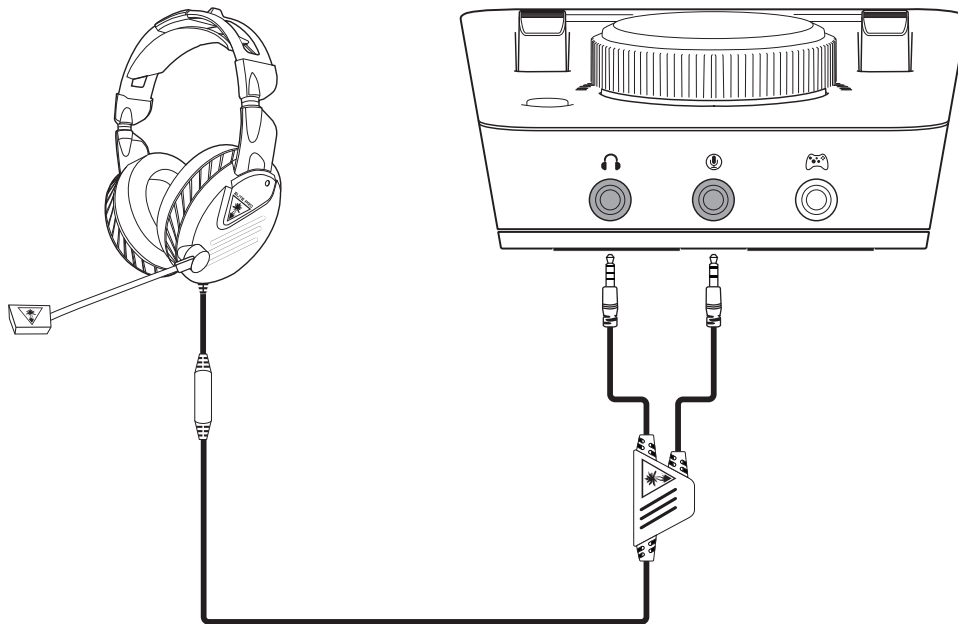
Do make sure however that you don't raise it too far and it still lights up blue when you speak.

Elite Pro Tactical Audio Controller

Standard Headset Setup



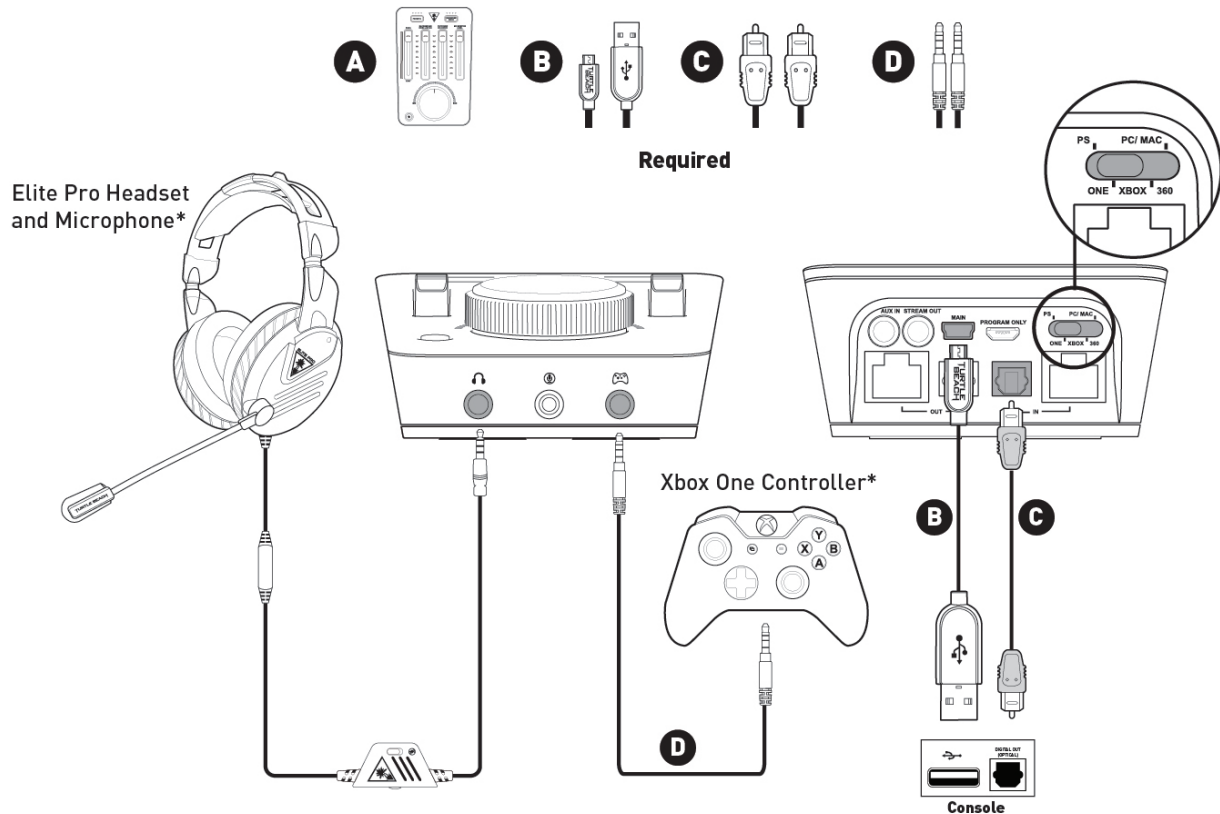
Tournament Noise Cancelling Mic Setup



Note: Tournament Noise Cancelling Microphone sold separately. The Tournament Noise Cancelling Microphone can only be used with the Tactical Audio Controller. Calibration of the background noise limiter is especially important when using the Noise Cancelling Microphone. See bottom of the previous page for calibration instructions.

Elite Pro Tactical Audio Controller

Xbox One Setup



Compatible out-of-the-box with the new Xbox One Controller with 3.5mm jack. Other Xbox One Controllers require a Elite Pro Tactical Audio Adapter*

*Sold Separately

- Go to Settings >> All Settings >> Display & Sound >> Audio Output
 - Select Optical Audio >> Bitstream Out
 - Select Bitstream Format >> Dolby Digital

Xbox One Controller with 3.5mm Jack

- On the home screen, navigate to the left side of the screen and down to the Settings "Gear"
 - Set Headset Volume to 50-75%
 - Set Headset Chat Mixer to output Chat Only
 - Set Mic Monitoring to Minimum

Xbox One Controller with Tactical Audio Adapter

- Turn the game volume all the way down using the left side of the adapter
- Turn the chat volume all the way up using the right side of the adapter
- Long press the mic mute button until you hear only one tone to indicate mic monitoring is off

Xbox One Controller with Headset Audio Controller

- Balance the game/chat mixer to chat only by pressing down on the left side of the adapter until you hear a tone
- Press up on the right side until you hear a tone to set the volume to max
- Long-press the mic mute button until you hear only one tone to indicate mic monitoring is off

Xbox One Controller with Microsoft Stereo Headset Adapter

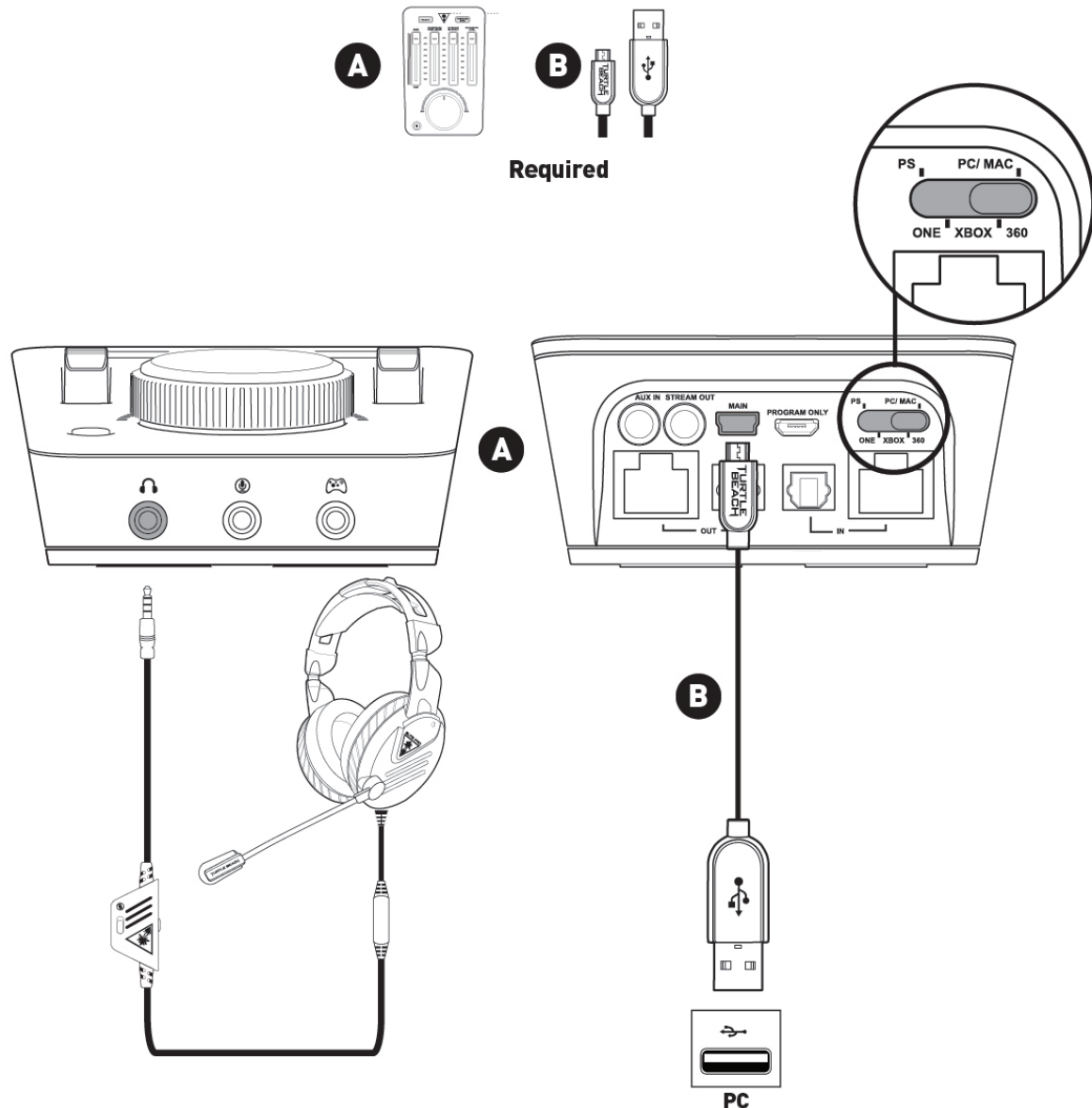
- Balance the game/chat mixer to chat only by pressing the person icon on the left side of the adapter until you hear a tone
- Press the plus button on the right side of the adapter until you hear a tone to set the volume to max

Note: For best performance only use with official wireless Xbox One controllers. Wired/Charging controllers are not recommended.

Go to Table of Contents 

Elite Pro Tactical Audio Controller

PC Setup

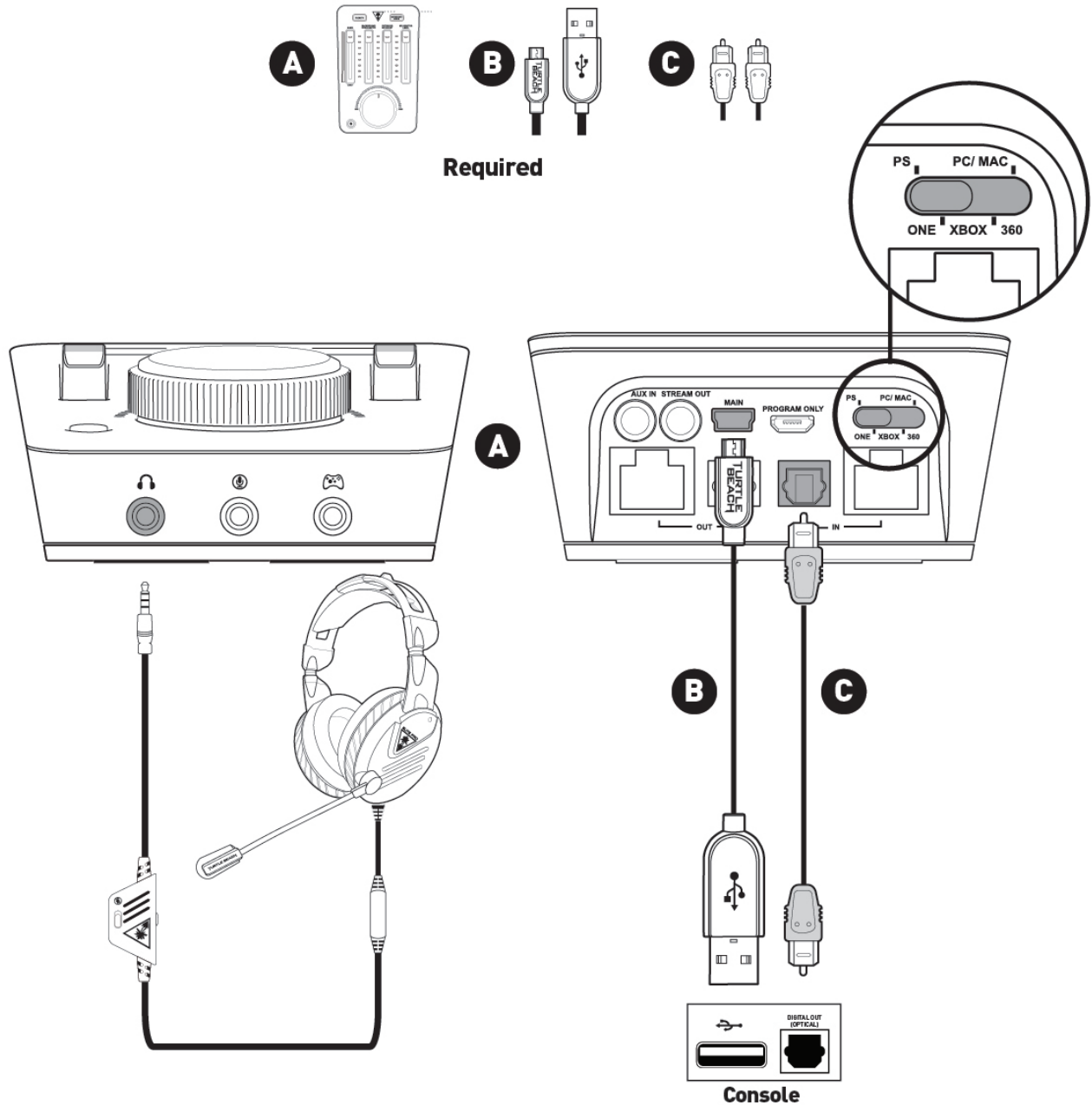


1. Right-click the Speaker icon in the Taskbar, then click "Playback Devices".
 - a. Right-click "Turtle Beach ELITE GAME" and click "Set as Default Device".
 - b. Right-click "Turtle Beach ELITE GAME", click "Configure Speakers", and select 7.1 Surround Sound.
 - c. Right-click "Turtle Beach ELITE CHAT", and click "Set as Default Communication Device".
 - d. Click the Recording Tab, then right-click "Turtle Beach ELITE CHAT" and click "Set as Default Device".

Note: If you are only being presented with an option for Turtle Beach Elite Chat in your playback devices then double check that the mode switch is set to PC/Mac and not PS.

Elite Pro Tactical Audio Controller

PS3™ Setup

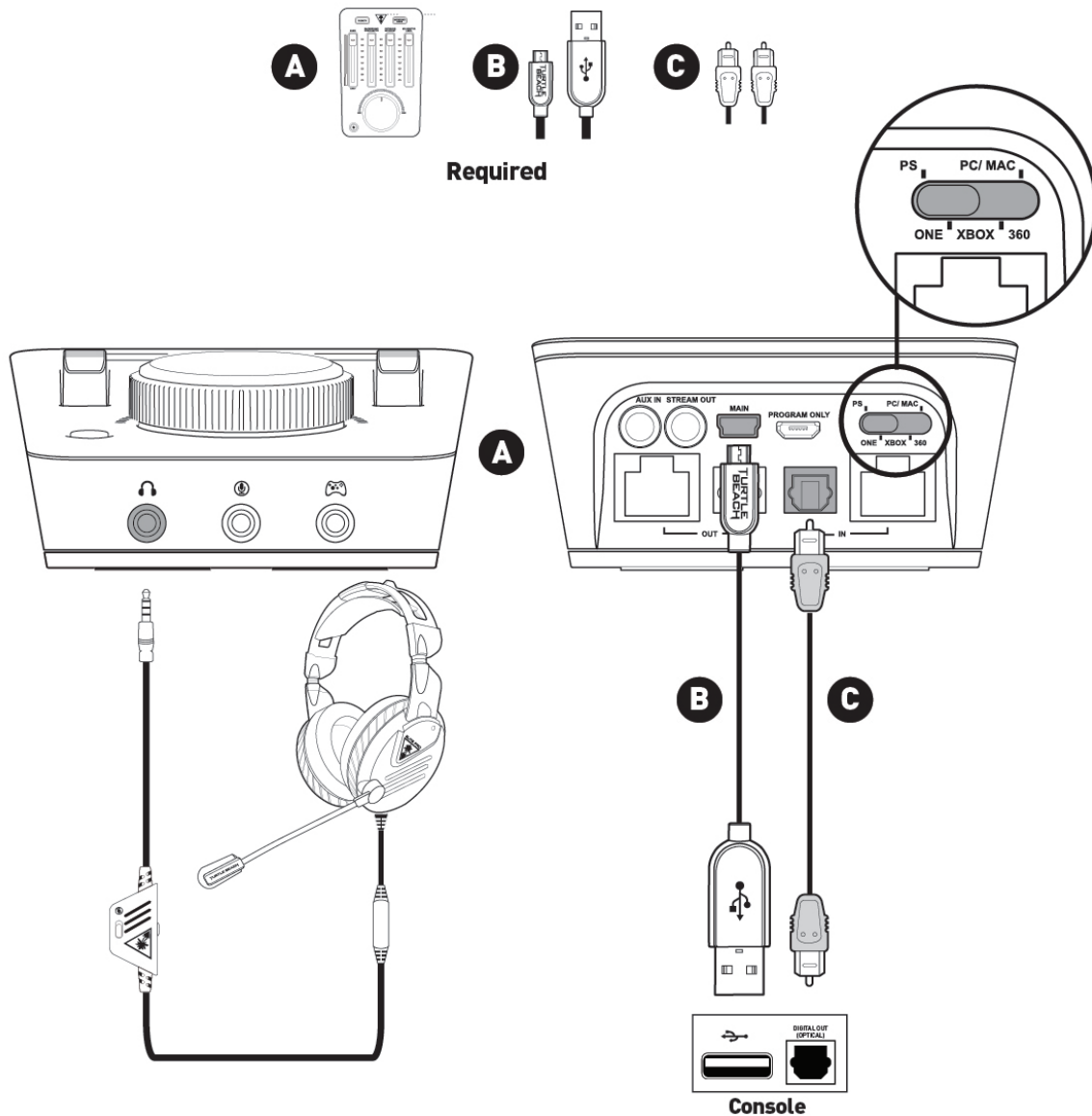


1. Go to Settings >> Accessory Settings >> Audio Device Settings
 - a. Select Turtle Beach ELITE CHAT for both Input Device & Output Device.
2. Go to Settings >> Sound Settings >> Audio Output Settings
 - a. Select Optical Digital
 - b. Select ONLY Dolby Digital 5.1 Ch.
 - c. Set Audio Multi Output to On.

[Go to Table of Contents](#)

Elite Pro Tactical Audio Controller

PS4™ Pro and PS4™ (with Optical) Setup

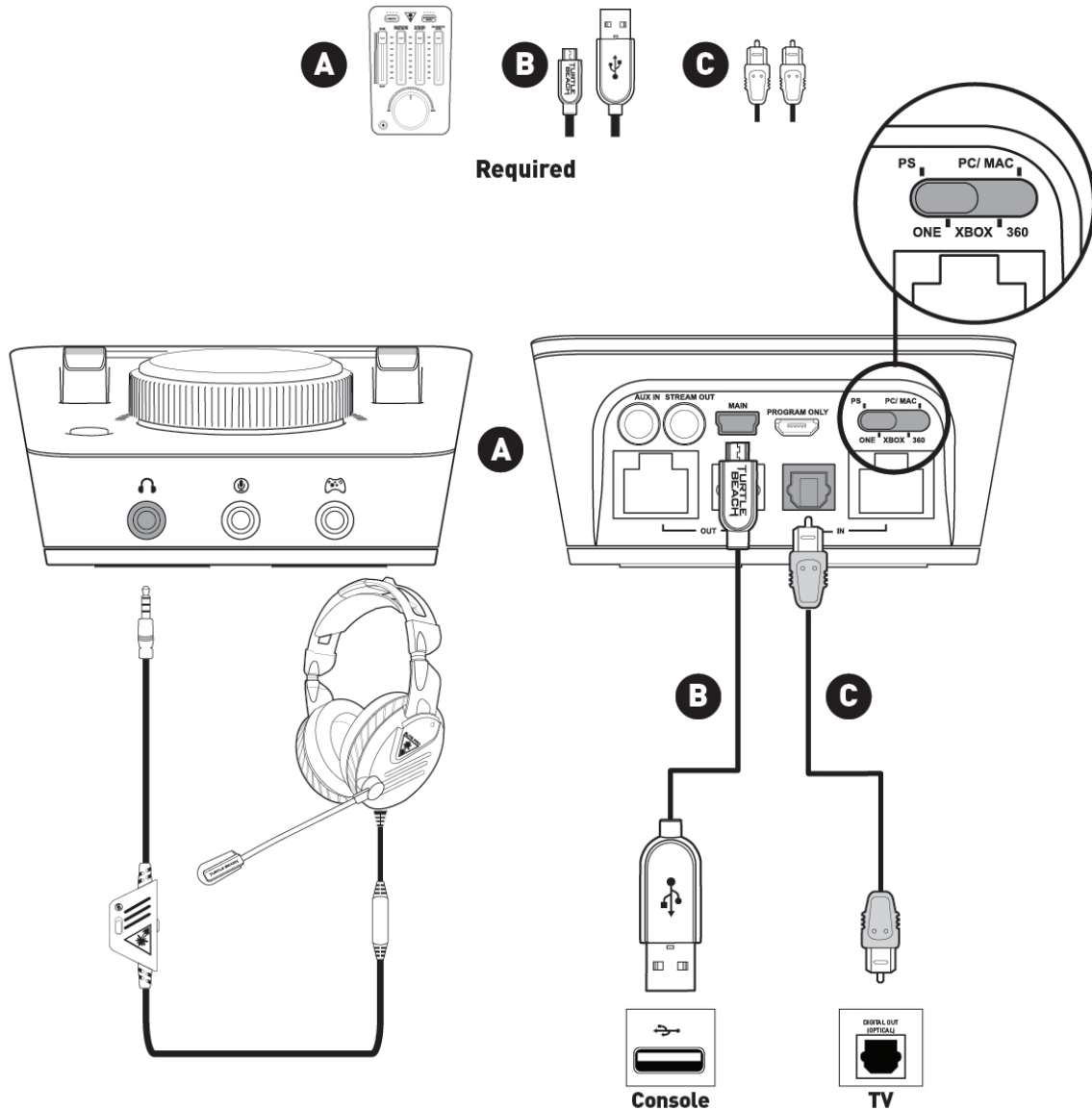


1. Go to Settings » Sound and Screen » Audio Output Settings
 - a. Select Primary Output Port » Digital Out (OPTICAL) » **ONLY** Dolby Digital 5.1ch.
 - b. Select Audio Format (Priority) » Bitstream (Dolby)
2. Go to Settings » Devices » Audio Devices
 - a. Select USB Headset (Turtle Beach ELITE CHAT) for Input & Output Device
 - b. Set Output to Headphones to Chat Audio
 - c. Set Volume Control (Headphones) level to maximum

Note: If your volume feels quiet or is dropping out, double check that your mode switch is set to PS and you have "Output to Headphones" set to Chat Audio. If this was set to 'All Audio' you would be sending both your game and chat sound over the TAC's USB path rather than the game sound coming separately over the optical cable.

Elite Pro Tactical Audio Controller

PS4™ (without Optical) Setup



1. Go to Settings » Sound and Screen » Audio Output Settings
 - a. Select Primary Output Port » HDMI
2. Go to Settings » Devices » Audio Devices
 - a. Select USB Headset (Turtle Beach ELITE CHAT) for Input & Output Device
 - b. Set Output to Headphones to Chat Audio
 - c. Set Volume Control (Headphones) level to maximum

Note: This setup uses the Digital optical Output of a TV. This audio output may need to be turned on or adjusted in the TV Settings, refer to the User Guide for your particular TV to do this.



Elite Pro Tactical Audio Controller Product Features







DTS® Headphone:X 7.1 Surround Sound is an innovative new technology that uses sophisticated processing to create immersive sound using just two speakers, making it feel like you're in the center of your own universe with high quality sounds all around and above you. Designed to work with almost any headset, it significantly enhances your audio experience whether you're gaming, listening to music or watching movies.


Working with Turtle Beach to further enhance this technology, DTS has created Surround Sound Modes to reproduce the sonic characteristics of rooms optimized for specific types of content. For each of the DTS® Headphone:X Surround Sound modes, Turtle Beach has designed four genre-based presets that optimize the sound for specific types of games, music and movies.

DTS Headphone:X Surround Modes & Audio Presets

 ● ○ ○ ○ GAME MODE 	
Signature Sound	Turtle Beach's SIGNATURE SOUND: place yourself in the middle of the action and hear your games just as the developers intended.
Shooter	Enter the warzone fully armed: feel your gun's recoil hit your chest, experience the full force of explosions as you lead your squad to victory.
Superhuman Hearing	Gain the ultimate audio advantage. Amplify low and faint sounds to hear everything, pinpoint your enemies and defeat them before they know you're there.
Footstep Focus	Focus on the sound of enemy footsteps approaching, hear every detail and gain a true audio advantage.

 ● ● ○ ○ MOVIE MODE 	
Signature Sound	Turtle Beach's SIGNATURE SOUND: get the best seat in the house and experience your movies like never before.
Action	Be the hero, face the explosions, duck the gunfire and hear the evac chopper circling overhead as you save the world again.
Horror	Build the suspense, hear every creaking footstep and bone-rattling scream... just try to get out alive.
Drama	Intensify the story and bring characters to life with pinpoint vocals and enhanced dialog.

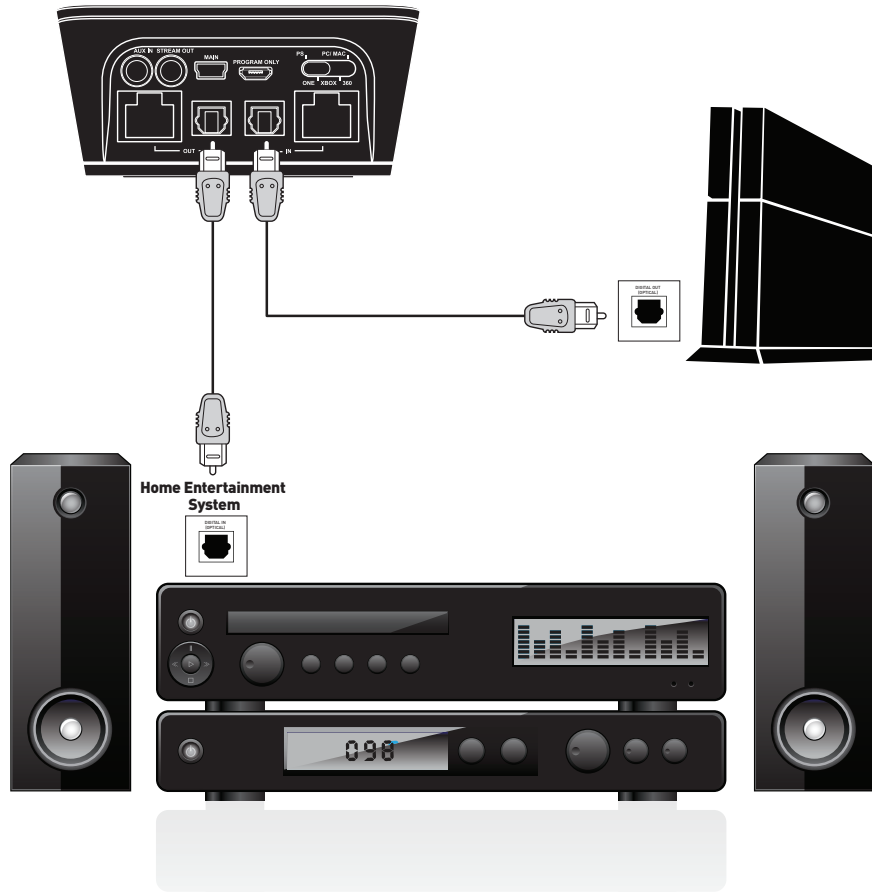
 ● ● ● ○ MUSIC MODE 	
Signature Sound	Turtle Beach's SIGNATURE SOUND: bring your music onto a personal stage and scan your ticket to your own private concert experience.
Stadium	Experience live concert music as it was meant to be heard, feel the crowd around you as the band on stage turns it up to 11.
Acoustic	Step into an acoustic open-mic night and experience a personal concert for one, just you and your favorite artist.
Dance	Put your hands in the air and place yourself in the middle of a nightclub as the DJ drops your favorite dance track.

● ● ● ● SURROUND OFF 	
Natural Sound	Turtle Beach tuned Natural Sound, hear your media just as the creators intended.
Bass Booster	Turn up the bass: feel the deep sound effects in your games and the punch of bass heavy music tracks.
Bass & Treble Booster	Turn everything up: increased lows and highs give you more of everything for a more powerful audio experience.
Vocal Booster	Tune in to the vocals on music tracks and dialog in games and movies, make your characters and stories come alive.

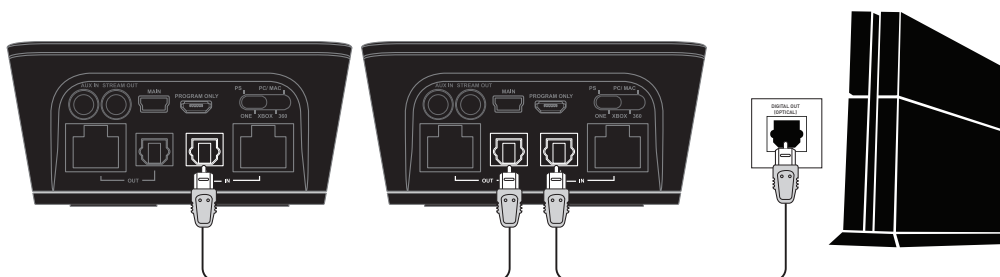
Digital Optical Pass-Through

Digital Optical Pass-Through

Integrating the TAC with your Audio Receiver/Home Entertainment system is easy to do. The TAC can pass-through audio to the system you already have in place. Just connect your existing Digital Optical Cable to the TAC and use the included Digital Optical Cable to finish the circuit. Now if you want to play a game or watch a movie with friends there are no adjustments needed!



Playing some couch co-op? Use the Digital Optical Pass-Through to share the same DTS Headphone:X 7.1 Surround Sound to a second TAC unit.*



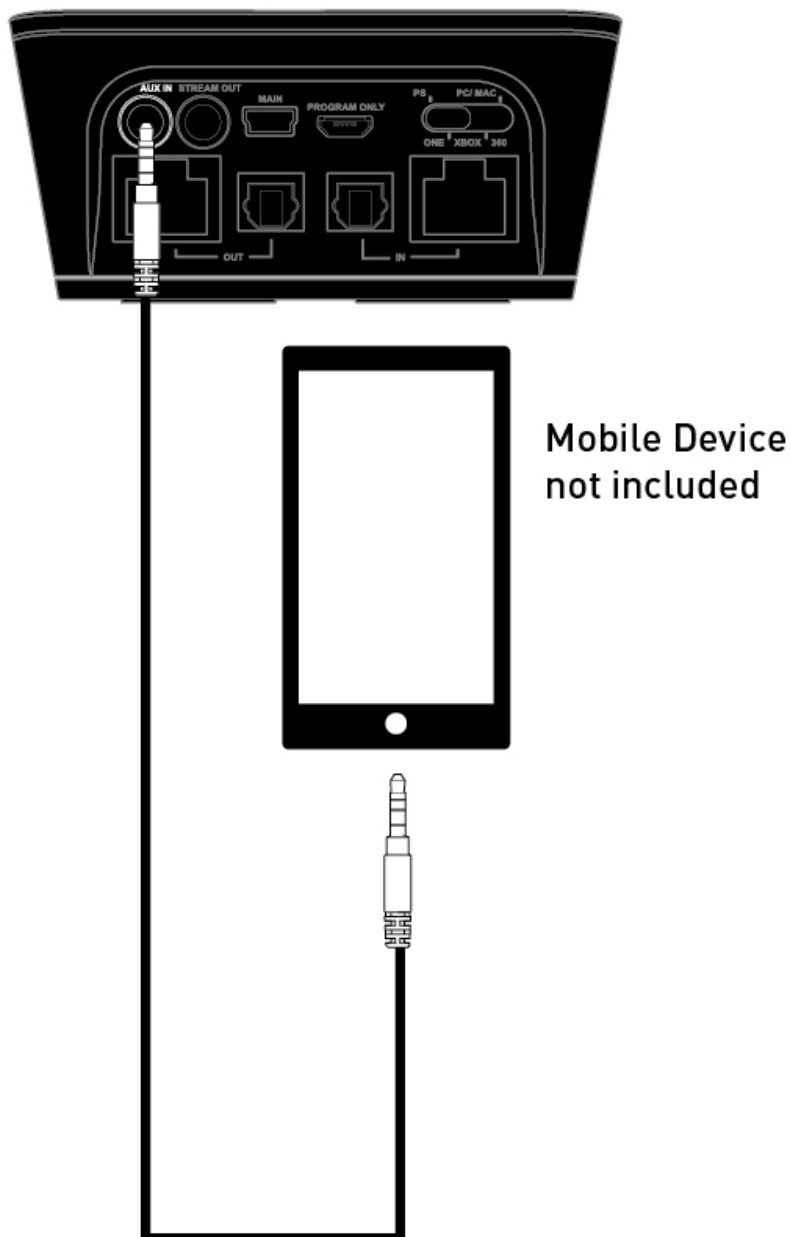
*Additional Optical Cable may be required

Auxiliary In

Auxiliary In

When repetitive Game Audio just isn't cutting it, connect to a phone or tablet to listen to your favorite music through the TAC. The Aux In port will pass all audio through at full volume so make sure to control the level of your music from your mobile device or from the phone or tablet.

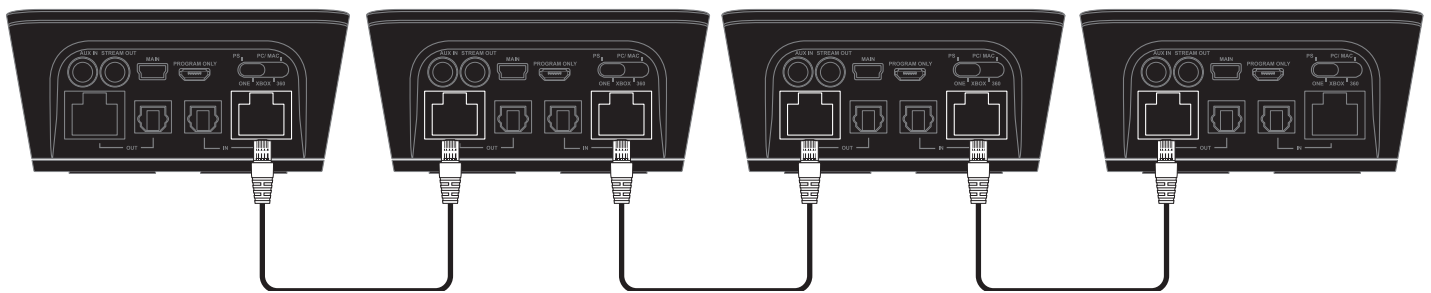
Additionally, you can also make/answer phone-calls using this same exact setup so there's no need to step away from your game.



Local Chat and Streaming

Local Tournament Setup

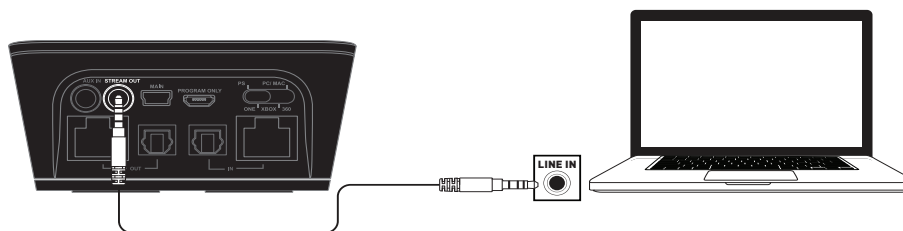
It can be frustrating dealing with chat lag and the limitations of on-line chat when setting up a local tournament. The TAC has you covered, connect however many TACs together as you need for lag-free high-quality chat. No limitation to this setup and the best part is all you need to daisy-chain the units together is a standard Ethernet cable*. No need for proprietary cables, connect the cable and you're locked in and ready for a tournament.



*Ethernet cables sold separately

Audio Stream Out

Want to live stream your gaming and become an Internet celebrity? Use the Stream Output to pass your Game, Chat, Mic, and Auxiliary Audio at full volume to the Line In on your PC/Mac for recording/streaming. When set-up in Local Tournament Chat Mode the voices of your teammates will be included in the Stream Output as well. The Stream Out will output audio exactly the same as you tuned the audio to be heard in your headset excluding Mic Monitor. It will output your mic volume to same level you have it tuned for other players to hear.



Note: This feature is designed for use when on Console. When gaming on PC/Mac® and streaming from the same system we recommend that audio is managed through PC Software such as OBS. The Stream Out on the TAC does not need to be used.

Tactical Audio Controller Programmability

The TAC uses advanced Multipoint Control Unit (MCU) and Digital Signal Processor (DSP) firmware. From time to time Turtle Beach will release new updates to improve your user experience and even add new features.

If you have any suggestions for improvements or new presets please let us know!

Customize your audio presets and always make sure your TAC is running on the latest firmware.

Visit
TURTLEBEACH.COM/TAC
and download the Ear Force Audio Hub



To contact our support team visit
TURTLEBEACH.COM/SUPPORT

Troubleshooting Tips

Elite Pro Tactical Audio Controller

Issue	Solution
People cannot hear me	<ol style="list-style-type: none">1. Make sure the "Background Noise-Limiter" Fader is NOT at the max setting. This Fader should be in the lower-half when used in a home environment.2. Make sure the Console switch on the back of the TAC is set to the platform you are gaming on.3. Check that the Mic is not muted on the TAC. The Mic LED (Bottom left Corner of the TAC) should indicate as follows:<ul style="list-style-type: none">-Red = Muted-White = Unmuted (Noise Gate Closed)-Blue = Unmuted (Noise Gate Open)4. Make sure microphone is not muted on the in-line controls (if using the original cable).
I cannot hear the game	<ol style="list-style-type: none">1. Make sure your Game/Chat Balance Fader is NOT set all the way to Chat Audio.2. Make sure the Console switch on the back of the TAC is set to the platform you are gaming on.3. If on Console, check that the Digital Optical Cable is connected to the "IN" port and not the "OUT" port on the TAC.4. If on Console, make sure you have removed the plastic protective tips from both ends of the optical cable and that it's firmly connected to both the console and TAC.5. If on PC, make sure to set TAC as your default device in Windows and in the particular game you are playing.

If your issue is not resolved by these steps, please visit:
turtlebeach.com/elitepro or turtlebeach.com/support

Regulatory Compliance Statements for the Turtle Beach Elite Pro Tactical Audio Controller Model (Elite Pro T.A.C)

Federal Communications Commission (FCC) Compliance Notices

Class B Interference Statement

This equipment has been tested and found to comply with the limits for a Class B digital device, pursuant to Part 15, Subpart B of the FCC Rules. These limits are designed to provide reasonable protection against harmful interference in a residential installation. This equipment generates, uses, and can radiate radio frequency energy and, if not installed and used in accordance with the instructions, may cause harmful interference to radio communications. However, there is no guarantee that interference will not occur in a particular installation. If this equipment does cause harmful interference to radio or television reception, which can be determined by turning the equipment off and on, the user is encouraged to try to correct the interference by one or more of the following measures:

- Reorient or relocate the receiving antenna.
- Increase the separation between the equipment and receiver.
- Connect the equipment into an outlet on a circuit different from that to which the receiver is connected.
- Consult the dealer or an experienced radio/TV technician for help.

FCC Caution:

This device complies with Part 15 of the FCC Rules. Operation is subject to the following two conditions: (1) This device may not cause harmful interference, and (2) this device must accept any interference received, including interference that may cause undesired operation.

Canadian ICES Statements

Canadian Department of Communications Radio Interference Regulations

This digital apparatus does not exceed the Class B limits for radio-noise emissions from a digital apparatus as set out in the Radio Interference Regulations of the Canadian Department of Communications. This Class B digital apparatus complies with Canadian ICES-003.

Règlement sur le brouillage radioélectrique du ministère des Communications

Cet appareil numérique respecte les limites de bruits radioélectriques visant les appareils numériques de classe B prescrites dans le Règlement sur le brouillage radioélectrique du ministère des Communications du Canada. Cet appareil numérique de la Classe B est conforme à la norme NMB-003 du Canada.

European Union and European Fair Trade Association (EFTA) Regulatory Compliance Declaration of Conformity

Marking by this symbol:



Indicates compliance with the Essential Requirements of the EMC Directive of the European Union (2004/108/EC). This equipment meets the following conformance standards:

Safety: EN 60950-1: 2006 + A11: 2009 + A1: 2010 + A12: 2011 (T-Mark License).
IEC 60950-1: 2005 (2nd Edition) + Am 1: 2009 (CB Scheme Report/Certificate),
EN 50332-1: 2000, EN50332-2: 2003, EN 71-3: 2013.

Also Licensed for Standards:

UL 60950-1: 2007 R12.11, CAN/CSA-C22.2 No. 60950-1-07 + A1: 2011

Additional licenses issued for specific countries available on request

Emissions: EN 55022: 2010, CISPR 22: 2008

Immunity: EN 55024: 2010, CISPR 24: 2010
EN 61000-4-2: (2009), EN 61000-4-3: (2010), EN 61000-4-8: (2010)

The products are licensed, as required, for additional country specific standards for the International Marketplace. Additional issued licenses available upon request.

Environmental: Low Voltage Directive 2006/95/EC, RoHS 2011/65/EU,
REACH 2006/1907/EC, WEEE 2012/19/EU, Packaging 94/62/EC,
Toys Safety Directive 2009/48/EC

Warning!

This is a Class B product. In a domestic environment, this product may cause radio interference, in which case, the user may be required to take appropriate measures.

Achtung!

Dieses ist ein Gerät der Funkstörgrenzwertklasse B. In Wohnbereichen können bei Betrieb dieses Gerätes Rundfunkstörungen auftreten, in welchen Fällen der Benutzer für entsprechende Gegenmaßnahmen verantwortlich ist.

Attention!

Ceci est un produit de Classe B. Dans un environnement domestique, ce produit risque de créer des interférences radioélectriques, il appartiendra alors à l'utilisateur de prendre les mesures spécifiques appropriées.



This symbol on the product or its packaging indicates that this product must not be disposed of with your other household waste. Instead, it is your responsibility to dispose of your waste equipment by handing it over to a designated collection point for the recycling of waste electrical and electronic equipment. The separate collection and recycling of your waste equipment at the time of disposal will help conserve natural resources and ensure that it is recycled in a manner that protects human health and the environment. For more information about where you can drop off your waste for recycling, please contact your local authority, or where you purchased your product.

Please visit the following URL for a complete copy of the declaration of conformity:

<http://www.turtlebeach.com/homologation>

LIMITED TWO YEAR WARRANTY FOR TURTLE BEACH PRODUCTS:

Voyetra Turtle Beach, Inc. ("VTB") warrants to the original end-user purchaser ("Purchaser") that the retail Turtle Beach hardware product herein ("Product") will be free of defects in materials and workmanship for a period of two years from the date of purchase by the Purchaser ("Warranty Period"). Any Extended Warranty or Service Plans purchased through a Retail store are not honored by VTB. The Warranty refers to the repair/replacement of a defective product during this period and not a refund.

This limited warranty is extended only to the original Purchaser of a new product, which was not sold "AS IS". It is not transferable or assignable to any subsequent purchaser. This limited warranty is applicable only in the country or territory where the Product was purchased from an authorized VTB retailer and does not apply to a Product that has been purchased as used or refurbished or was included as part of a non-VTB product.

WARRANTY SERVICE:

In the USA and CANADA Warranty Service is provided by our Turtle Beach USA offices and in all other Countries it is provided by our local International Distributors when available. Refurbished/Recertified products are sold on an AS IS basis with a 90-day Warranty or less in accordance with each vendor's policy.

VTB does not warrant uninterrupted or error-free operation of the Product and is under no obligation to support the Product for all computer operating systems or future versions of such operating systems.

If a defect should occur during the Warranty Period, Purchaser must contact VTB to obtain a Return Merchandise Authorization ("RMA") number on the basis of the dated purchase receipt. Purchaser will be responsible for shipping costs incurred in returning the defective Product to an authorized VTB service center, or to the repair facility located at VTB's corporate headquarters. VTB will not be responsible for other products or accessories included with the defective Product sent to VTB. The RMA number must be clearly indicated on the outside of the package. Packages without an RMA number will be refused by VTB or its representatives and returned to sender at the sender's expense.

In the event of a defect, Purchaser's sole and exclusive remedy, and VTB's sole liability, is expressly limited to the correction of the defect by adjustment, repair, or replacement of the Product at VTB's sole option and expense. VTB owns all Products it has replaced and all parts removed from repaired Products. VTB uses new and reconditioned parts made by various manufacturers in performing warranty repairs and building replacement products. If VTB repairs or replaces a product, the original Warranty Period is not extended, however, VTB warrants that repaired or replacement parts will be free from defects in material and workmanship for a period of thirty (30) days from the date of repair or replacement, or for the remainder of the Warranty Period, whichever is greater.

This warranty does not apply to any Product that has had its serial number altered, removed or defaced, or any Product damage caused by shipping, improper storage, accident, problems with electrical power, abuse, misuse, neglect, ordinary wear, acts of God (e.g. flood), failure to follow directions, improper maintenance, use not in accordance with product instructions, unauthorized modification or service of the Product or damage resulting from the use of the Product with hardware, software or other products not provided by or specifically recommended by VTB.

NOTES:

- Replacement Parts and accessories that are subject to "wear and tear" such as earpads, mic foam covers, talkback cables, etc. have a three (3) month Warranty.
- Replacement Parts for Discontinued Products are sold on an AS IS basis, they are not supported and come with a 30 day Warranty.

THIS LIMITED WARRANTY IS PURCHASER'S SOLE AND EXCLUSIVE REMEDY AND IS IN LIEU OF ALL OTHER WARRANTIES, EXPRESS OR IMPLIED. TO THE EXTENT PERMITTED BY APPLICABLE LAW, VTB HEREBY DISCLAIMS THE APPLICABILITY OF ANY IMPLIED WARRANTY OF MERCHANTABILITY, FITNESS FOR A PARTICULAR PURPOSE OR USE FOR THE PRODUCT. IF SUCH A DISCLAIMER IS PROHIBITED BY APPLICABLE LAW, THE IMPLIED WARRANTY IS LIMITED TO THE DURATION OF THE FOREGOING LIMITED WRITTEN WARRANTY.

IN NO EVENT SHALL VTB BE LIABLE FOR ANY INDIRECT, INCIDENTAL, SPECIAL, PUNITIVE OR CONSEQUENTIAL DAMAGES, OR DAMAGES, INCLUDING BUT NOT LIMITED TO ANY LOST PROFITS, DATA, OR LOSS OF USE, ANY THIRD PARTY CLAIMS, AND ANY INJURY TO PROPERTY OR BODILY INJURY (INCLUDING DEATH) TO ANY PERSON, ARISING FROM OR RELATING TO THE USE OF THIS PRODUCT OR ARISING FROM BREACH OF THE WARRANTY, BREACH OF CONTRACT, NEGLIGENCE, TORT, OR STRICT LIABILITY, EVEN IF VTB HAS BEEN ADVISED OF THE POSSIBILITY OF SUCH DAMAGES.

This warranty supersedes all prior agreements or understandings, oral or written, relating to the Product, and no representation, promise or condition not contained herein will modify these terms. Some states do not allow the exclusion or limitation of incidental or consequential damages, so the above exclusion or limitation may not apply to you. This warranty gives you specific legal rights. You may also have other rights, which vary from state to state. Any action or lawsuit for breach of warranty must be commenced within eighteen (18) months following the purchase of the Product.

EXCLUSIONS FROM LIMITED WARRANTY:

This Limited Warranty shall not apply and VTB has no liability under this Limited Warranty if the Turtle Beach Product:

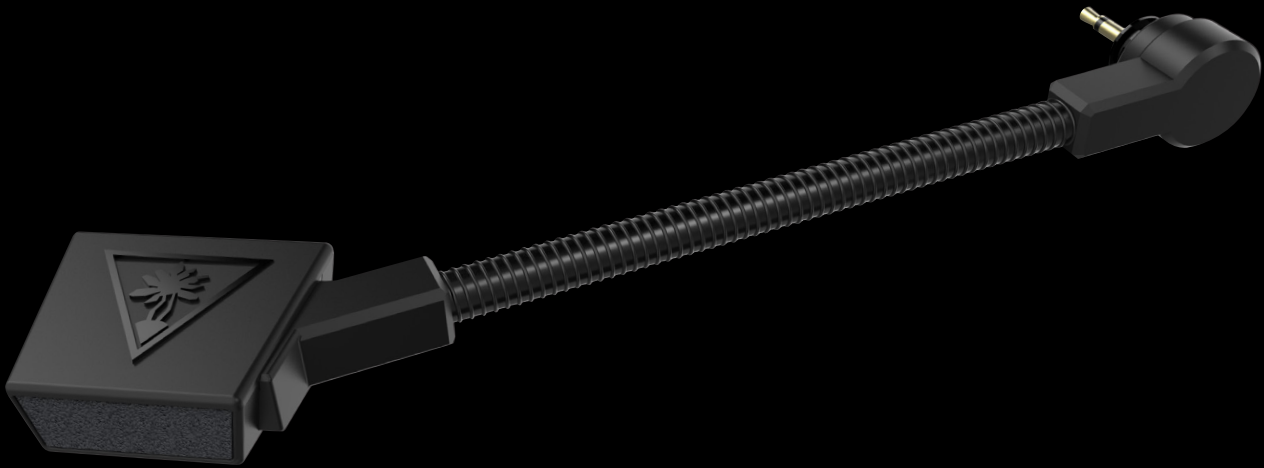
- is used for commercial purposes such as "LAN, Call Centers" (including rental or lease);
- is modified or tampered with;
- is damaged by Acts of God, power surge, misuse, abuse, negligence, accident, wear and tear, mishandling, misapplication, or other causes unrelated to defective materials or workmanship;
- serial number is defaced, altered or removed;
- is not used in accordance with the documentation and use instructions; or
- is repaired, modified or altered by other than authorized repair centers.
- is no longer available because it was discarded.



TURTLE BEACH®

ELITE PRO

TOURNAMENT NOISE
CANCELLING MICROPHONE¹



*¹This product requires both the Turtle Beach
Elite Pro Headset and Elite Pro T.A.C.*



Table of Contents

About the Elite Pro Tournament Noise Cancelling Microphone

P61

Setup

P62

Regulatory Compliance Statements

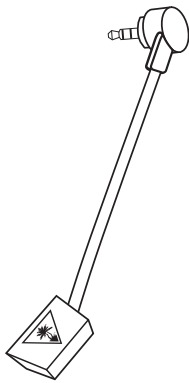
P63

Warranty Information

P65

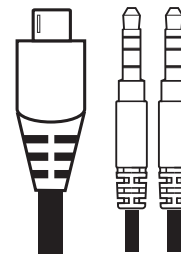
ELITE PRO TOURNAMENT NOISE CANCELLING MICROPHONE

A



Elite Pro Tournament
Noise Cancelling Microphone

B



1.9m Elite Pro Tournament
Audio and Chat Cable

Elite Pro Tournament Noise Cancelling Microphone – The world's first ever active noise-cancelling microphone built for eSports.

(Requires Elite Pro Headset and Elite Pro TAC)

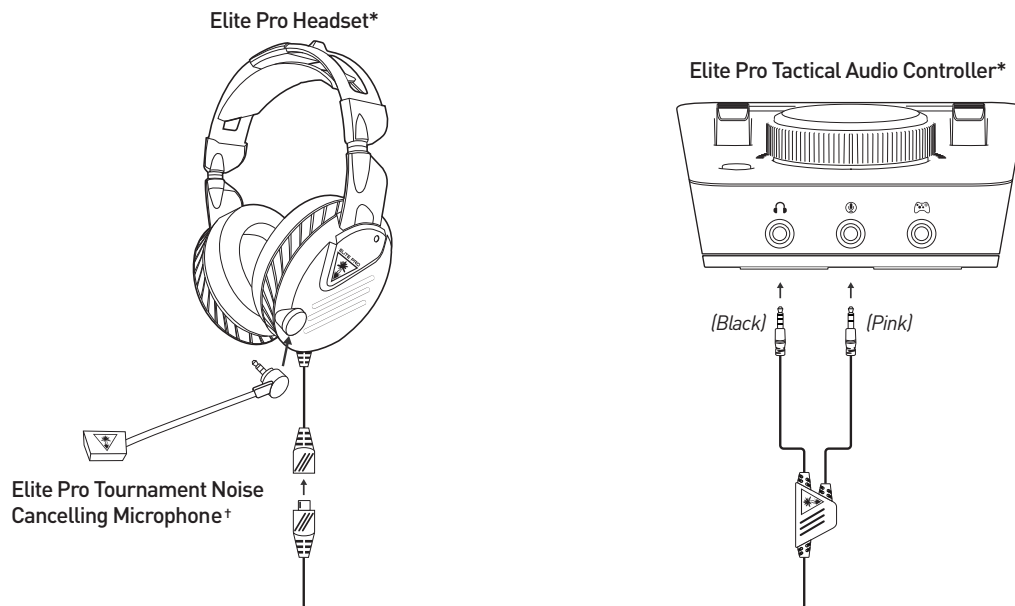
Video demonstrations at
turtlebeach.com/elitepro

Any questions?
turtlebeach.com/support

Go to Table of Contents 

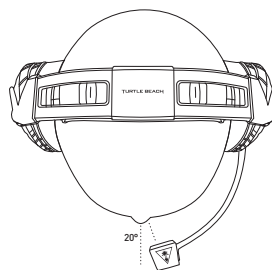
Elite Pro Tournament Noise Cancelling Microphone

Setup



**Note: The Elite Pro Tournament Noise Cancelling Microphone and 1.9m Elite Pro Tournament Audio and Chat Cable are designed for use with Tactical Audio Controller. They are not intended for use with any other devices.*

1. First remove the Elite Pro 1.3m Audio Cable from the Elite Pro Headset (if connected). When disconnecting this cable, hold onto the thicker plug section; do not pull using the cable itself. Connect the 1.9m Elite Pro Tournament Audio and Chat Cable to the short cable hanging from the Left Earcup of the Elite Pro Headset. Once fully inserted, the orange stripes on the Cable should be visible through the corresponding slots on the connector.
2. Disconnect the Elite Pro Microphone that originally came with the Elite Pro Headset (if connected). Connect the Elite Pro Tournament Noise Cancelling Microphone to the headset.
3. Make sure the Microphone is position according to the diagram below.



4. Make sure to re-calibrate your Background Noise Limiter, Mic Boost, and Mic Monitor Levels for your new microphone.
5. If you or your friends hear sudden bursts of distortion double check the Mic is angled towards your mouth, not nose and re-adjust the calibration of the Background Noise Limiter.

How to Calibrate:

The mic mute LED on the TAC will light up blue when the microphone detects noise and it will be white when it doesn't.

You can use this to properly adjust the "Background Noise Limiter" on the TAC. Increase the noise limiter one notch at a time until the flashing blue stops. Once it does, that means your microphone is no longer picking up background sounds, such as your keyboard, breath, etc.

Do make sure however that you don't raise it too far and it still lights up blue when you speak.

Regulatory Compliance Statements for the Elite Pro Tournament Noise Cancelling Microphone.

Federal Communications Commission (FCC) Compliance Notices

Class B Interference Statement

This equipment has been tested and found to comply with the limits for a Class B digital device, pursuant to Part 15, Subpart B of the FCC Rules. These limits are designed to provide reasonable protection against harmful interference in a residential installation. This equipment generates, uses, and can radiate radio frequency energy and, if not installed and used in accordance with the instructions, may cause harmful interference to radio communications. However, there is no guarantee that interference will not occur in a particular installation. If this equipment does cause harmful interference to radio or television reception, which can be determined by turning the equipment off and on, the user is encouraged to try to correct the interference by one or more of the following measures:

- Reorient or relocate the receiving antenna.
- Increase the separation between the equipment and receiver.
- Connect the equipment into an outlet on a circuit different from that to which the receiver is connected.
- Consult the dealer or an experienced radio/TV technician for help.

FCC Caution:

This device complies with Part 15 of the FCC Rules. Operation is subject to the following two conditions: (1) This device may not cause harmful interference, and (2) this device must accept any interference received, including interference that may cause undesired operation.

Canadian ICES Statements

Canadian Department of Communications Radio Interference Regulations

This digital apparatus does not exceed the Class B limits for radio-noise emissions from a digital apparatus as set out in the Radio Interference Regulations of the Canadian Department of Communications. This Class B digital apparatus complies with Canadian ICES-003.

Règlement sur le brouillage radioélectrique du ministère des Communications

Cet appareil numérique respecte les limites de bruits radioélectriques visant les appareils numériques de classe B prescrites dans le Règlement sur le brouillage radioélectrique du ministère des Communications du Canada. Cet appareil numérique de la Classe B est conforme à la norme NMB-003 du Canada.

European Union and European Fair Trade Association (EFTA) Regulatory Compliance Declaration of Conformity

Marking by this symbol:



Indicates compliance with the Essential Requirements of the EMC Directive of the European Union (2004/108/EC). This equipment meets the following conformance standards:

Safety: EN 60950-1: 2006 + A11: 2009 + A1: 2010 + A12: 2011 (T-Mark License).
IEC 60950-1: 2005 (2nd Edition) + Am 1: 2009 (CB Scheme Report/Certificate),
EN 50332-1: 2000, EN50332-2: 2003, EN 71-3: 2013.

Also Licensed for Standards:

UL 60950-1: 2007 R12.11, CAN/CSA-C22.2 No. 60950-1-07 + A1: 2011

Additional licenses issued for specific countries available on request

Emissions: EN 55022: 2010, CISPR 22: 2008

Immunity: EN 55024: 2010, CISPR 24: 2010
EN 61000-4-2: (2009), EN 61000-4-3: (2010), EN 61000-4-8: (2010)

The products are licensed, as required, for additional country specific standards for the International Marketplace. Additional issued licenses available upon request.

Environmental: Low Voltage Directive 2006/95/EC, RoHS 2011/65/EU,
REACH 2006/1907/EC, WEEE 2012/19/EU, Packaging 94/62/EC,
Toys Safety Directive 2009/48/EC

Warning!

This is a Class B product. In a domestic environment, this product may cause radio interference, in which case, the user may be required to take appropriate measures.

Achtung!

Dieses ist ein Gerät der Funkstörgrenzwertklasse B. In Wohnbereichen können bei Betrieb dieses Gerätes Rundfunkstörungen auftreten, in welchen Fällen der Benutzer für entsprechende Gegenmaßnahmen verantwortlich ist.

Attention!

Ceci est un produit de Classe B. Dans un environnement domestique, ce produit risque de créer des interférences radioélectriques, il appartiendra alors à l'utilisateur de prendre les mesures spécifiques appropriées.



This symbol on the product or its packaging indicates that this product must not be disposed of with your other household waste. Instead, it is your responsibility to dispose of your waste equipment by handing it over to a designated collection point for the recycling of waste electrical and electronic equipment. The separate collection and recycling of your waste equipment at the time of disposal will help conserve natural resources and ensure that it is recycled in a manner that protects human health and the environment. For more information about where you can drop off your waste for recycling, please contact your local authority, or where you purchased your product.

Please visit the following URL for a complete copy of the declaration of conformity:

<http://www.turtlebeach.com/homologation>

LIMITED TWO YEAR WARRANTY FOR TURTLE BEACH PRODUCTS:

Voyetra Turtle Beach, Inc. ("VTB") warrants to the original end-user purchaser ("Purchaser") that the retail Turtle Beach hardware product herein ("Product") will be free of defects in materials and workmanship for a period of two years from the date of purchase by the Purchaser ("Warranty Period"). Any Extended Warranty or Service Plans purchased through a Retail store are not honored by VTB. The Warranty refers to the repair/replacement of a defective product during this period and not a refund.

This limited warranty is extended only to the original Purchaser of a new product, which was not sold "AS IS". It is not transferable or assignable to any subsequent purchaser. This limited warranty is applicable only in the country or territory where the Product was purchased from an authorized VTB retailer and does not apply to a Product that has been purchased as used or refurbished or was included as part of a non-VTB product.

WARRANTY SERVICE:

In the USA and CANADA Warranty Service is provided by our Turtle Beach USA offices and in all other Countries it is provided by our local International Distributors when available. Refurbished/Recertified products are sold on an AS IS basis with a 90-day Warranty or less in accordance with each vendor's policy.

VTB does not warrant uninterrupted or error-free operation of the Product and is under no obligation to support the Product for all computer operating systems or future versions of such operating systems.

If a defect should occur during the Warranty Period, Purchaser must contact VTB to obtain a Return Merchandise Authorization ("RMA") number on the basis of the dated purchase receipt. Purchaser will be responsible for shipping costs incurred in returning the defective Product to an authorized VTB service center, or to the repair facility located at VTB's corporate headquarters. VTB will not be responsible for other products or accessories included with the defective Product sent to VTB. The RMA number must be clearly indicated on the outside of the package. Packages without an RMA number will be refused by VTB or its representatives and returned to sender at the sender's expense.

In the event of a defect, Purchaser's sole and exclusive remedy, and VTB's sole liability, is expressly limited to the correction of the defect by adjustment, repair, or replacement of the Product at VTB's sole option and expense. VTB owns all Products it has replaced and all parts removed from repaired Products. VTB uses new and reconditioned parts made by various manufacturers in performing warranty repairs and building replacement products. If VTB repairs or replaces a product, the original Warranty Period is not extended, however, VTB warrants that repaired or replacement parts will be free from defects in material and workmanship for a period of thirty (30) days from the date of repair or replacement, or for the remainder of the Warranty Period, whichever is greater.

This warranty does not apply to any Product that has had its serial number altered, removed or defaced, or any Product damage caused by shipping, improper storage, accident, problems with electrical power, abuse, misuse, neglect, ordinary wear, acts of God (e.g. flood), failure to follow directions, improper maintenance, use not in accordance with product instructions, unauthorized modification or service of the Product or damage resulting from the use of the Product with hardware, software or other products not provided by or specifically recommended by VTB.

NOTES:

- Replacement Parts and accessories that are subject to "wear and tear" such as earpads, mic foam covers, talkback cables, etc. have a three (3) month Warranty.
- Replacement Parts for Discontinued Products are sold on an AS IS basis, they are not supported and come with a 30 day Warranty.

THIS LIMITED WARRANTY IS PURCHASER'S SOLE AND EXCLUSIVE REMEDY AND IS IN LIEU OF ALL OTHER WARRANTIES, EXPRESS OR IMPLIED. TO THE EXTENT PERMITTED BY APPLICABLE LAW, VTB HEREBY DISCLAIMS THE APPLICABILITY OF ANY IMPLIED WARRANTY OF MERCHANTABILITY, FITNESS FOR A PARTICULAR PURPOSE OR USE FOR THE PRODUCT. IF SUCH A DISCLAIMER IS PROHIBITED BY APPLICABLE LAW, THE IMPLIED WARRANTY IS LIMITED TO THE DURATION OF THE FOREGOING LIMITED WRITTEN WARRANTY.

IN NO EVENT SHALL VTB BE LIABLE FOR ANY INDIRECT, INCIDENTAL, SPECIAL, PUNITIVE OR CONSEQUENTIAL DAMAGES, OR DAMAGES, INCLUDING BUT NOT LIMITED TO ANY LOST PROFITS, DATA, OR LOSS OF USE, ANY THIRD PARTY CLAIMS, AND ANY INJURY TO PROPERTY OR BODILY INJURY (INCLUDING DEATH) TO ANY PERSON, ARISING FROM OR RELATING TO THE USE OF THIS PRODUCT OR ARISING FROM BREACH OF THE WARRANTY, BREACH OF CONTRACT, NEGLIGENCE, TORT, OR STRICT LIABILITY, EVEN IF VTB HAS BEEN ADVISED OF THE POSSIBILITY OF SUCH DAMAGES.

This warranty supersedes all prior agreements or understandings, oral or written, relating to the Product, and no representation, promise or condition not contained herein will modify these terms. Some states do not allow the exclusion or limitation of incidental or consequential damages, so the above exclusion or limitation may not apply to you. This warranty gives you specific legal rights. You may also have other rights, which vary from state to state. Any action or lawsuit for breach of warranty must be commenced within eighteen (18) months following the purchase of the Product.

EXCLUSIONS FROM LIMITED WARRANTY:

This Limited Warranty shall not apply and VTB has no liability under this Limited Warranty if the Turtle Beach Product:

- is used for commercial purposes such as "LAN, Call Centers" (including rental or lease);
- is modified or tampered with;
- is damaged by Acts of God, power surge, misuse, abuse, negligence, accident, wear and tear, mishandling, misapplication, or other causes unrelated to defective materials or workmanship;
- serial number is defaced, altered or removed;
- is not used in accordance with the documentation and use instructions; or
- is repaired, modified or altered by other than authorized repair centers.
- is no longer available because it was discarded.



For PS4™ | Xbox One |
Mobile | PC & Mac®



youtube.com/TurtleBeachVideos



Product support and warranty information:
support.turtlebeach.com