

# MONTAGEANLEITUNG

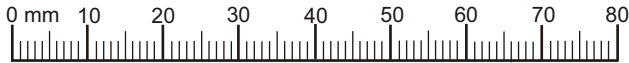
## ASSEMBLY INSTRUCTIONS

### INSTRUCTION DE MONTAGE

#### OPBOUW HANDLEIDING

#### ISTRUZIONI DI MONTAGGIO

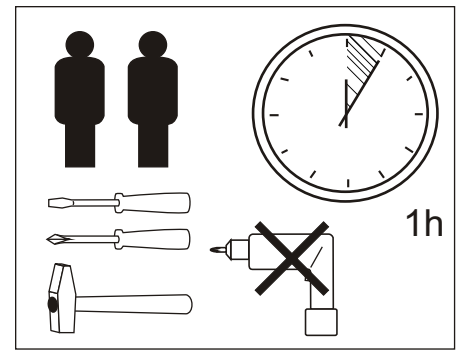
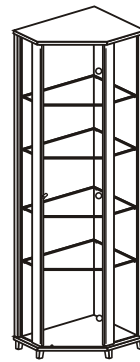
Technische und optische Änderungen vorbehalten.  
 Under reservation of technical and optical changes.  
 Avec le droit de modifier des details technique et visuel.  
 Technische en optische veranderingen voorbehouden.  
 Ci riserviamo per eventuali variazioni tecniche.



Hiermit können Sie die mitgelieferten Schrauben nachmessen.  
 To measure the delivered screws herewith.  
 Pour mesurer les vis livrées avec.  
 Om de nageleverde schroeven na te meten.  
 Verificare la ferramenta fornita.

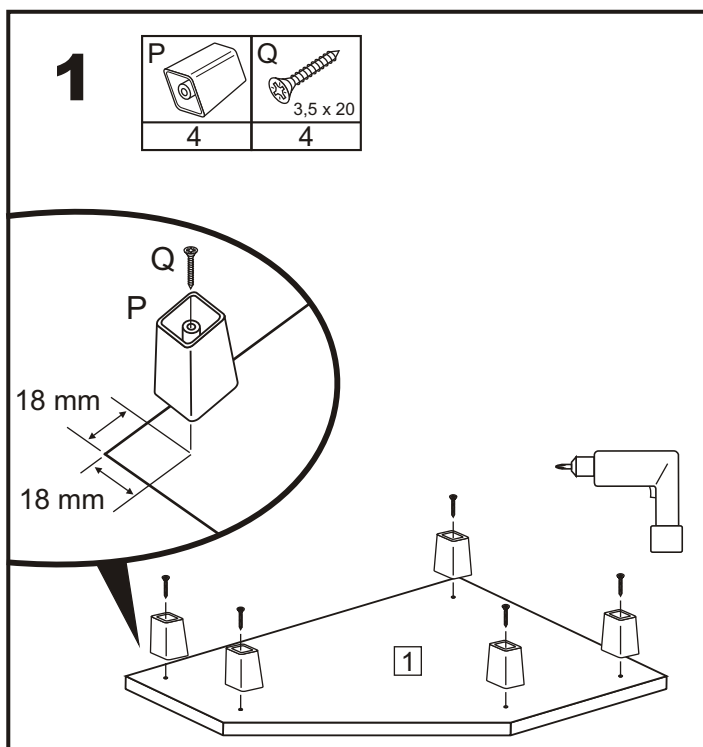
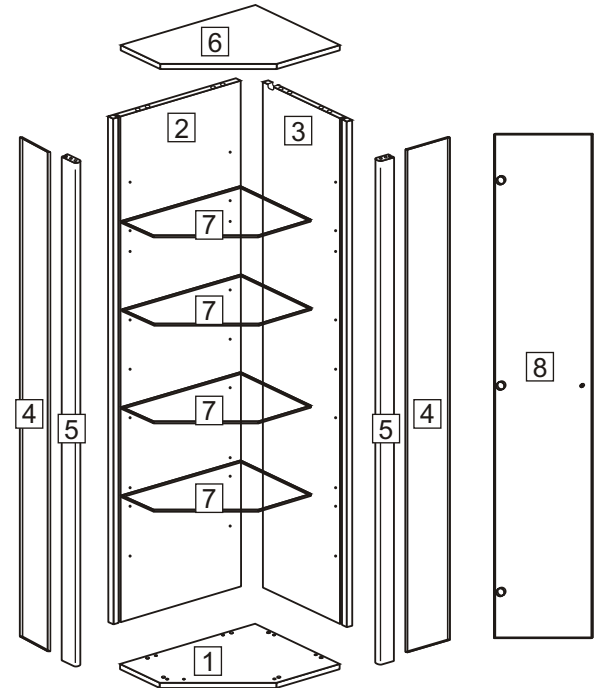
<b>A</b> 	<b>B</b>  8 x 30	<b>C</b> 	<b>D</b> 	<b>E</b> 
12	12	15	3	3
<b>F</b>  3,5 x 16	<b>G</b> 	<b>H</b> 	<b>I</b> 	<b>J</b> 
6	3	6	3	1
<b>K</b> 	<b>L</b>  4 x 17	<b>M</b> 	<b>N</b> 	<b>O</b> 
1	1	2	20	20

<b>P</b> 	<b>Q</b>  3,5 x 20
4	4



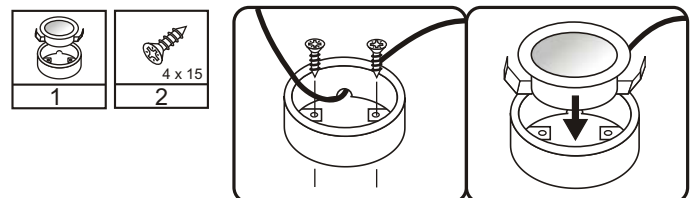
0104483 - 1 / E.N. - 05.06.07

## Trio

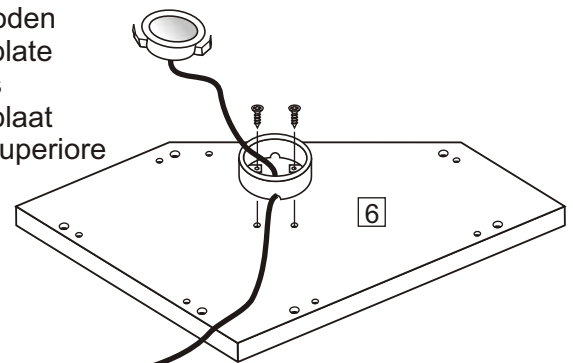


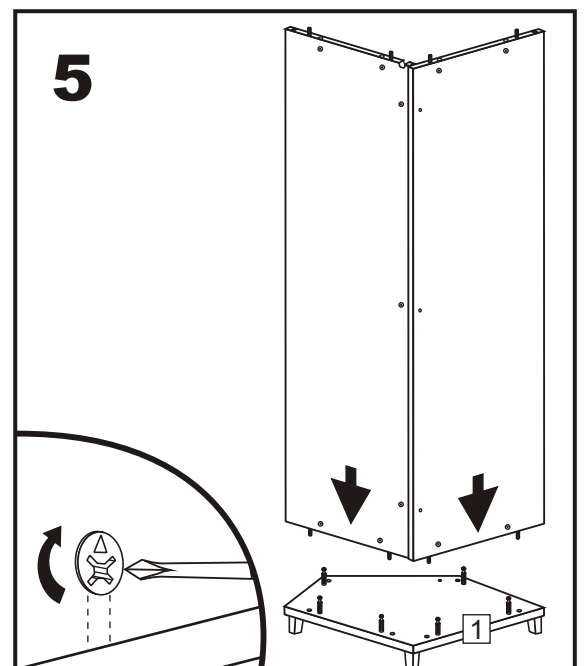
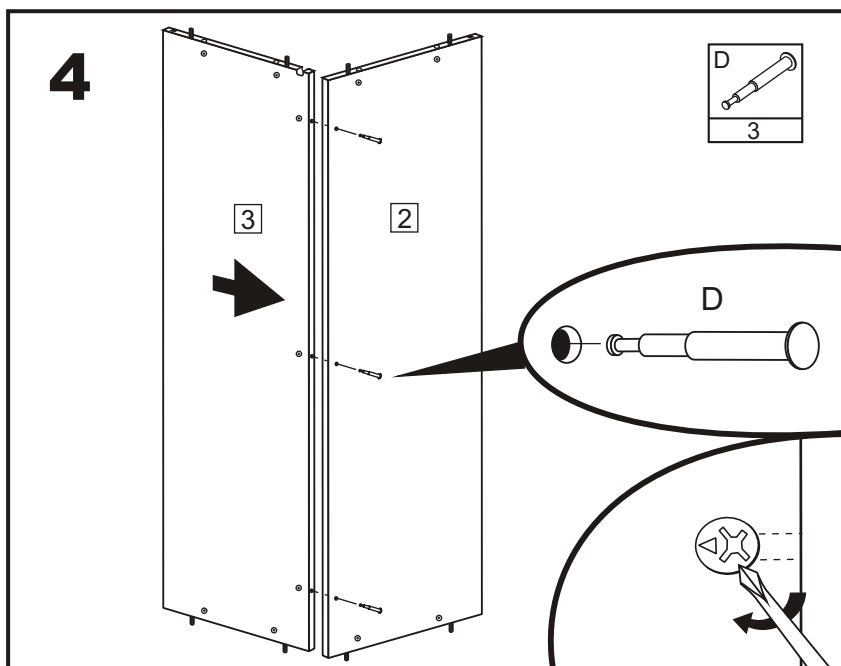
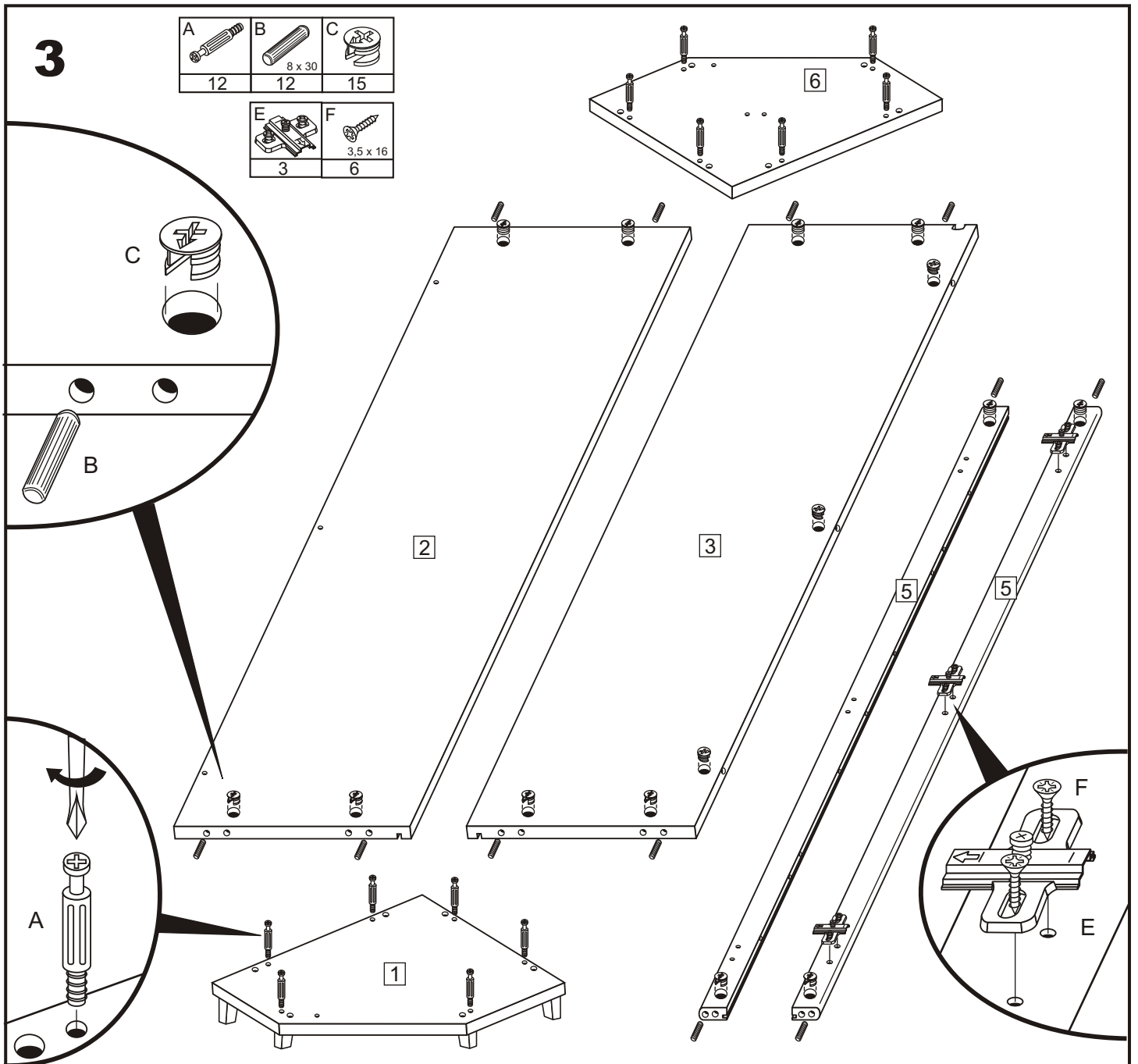
## 2

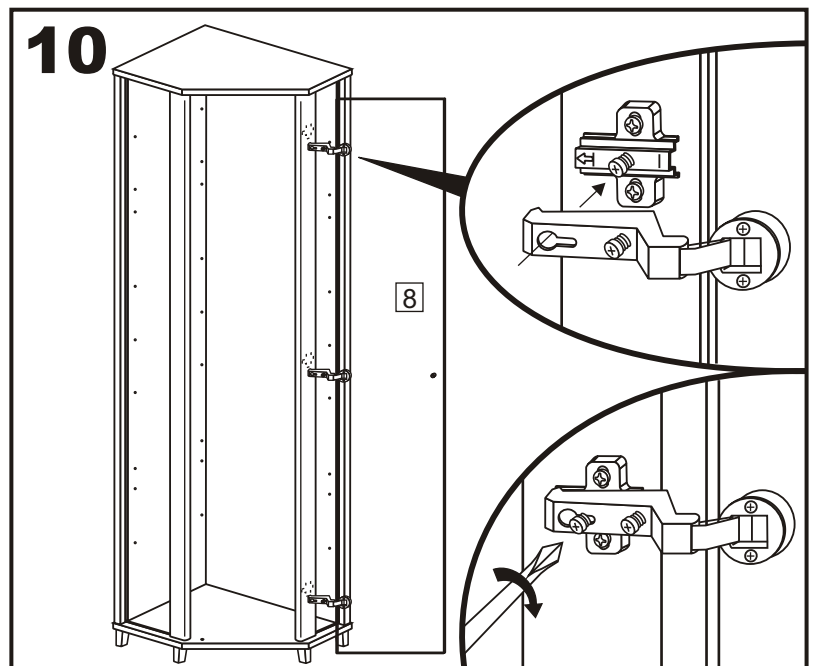
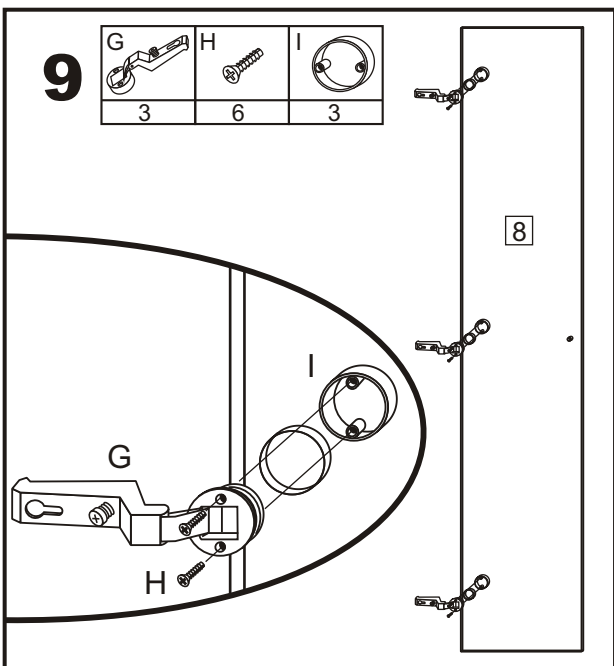
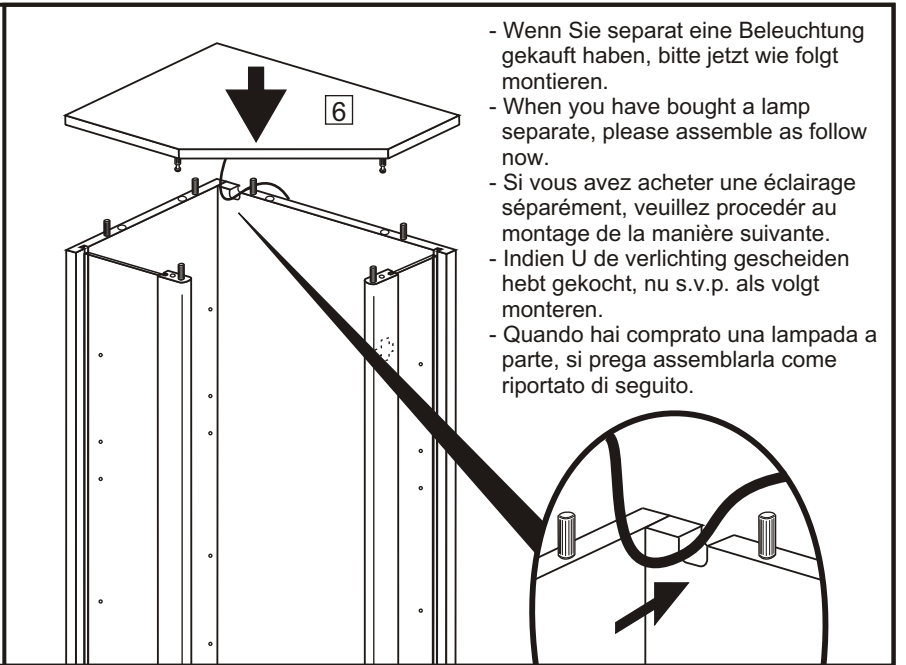
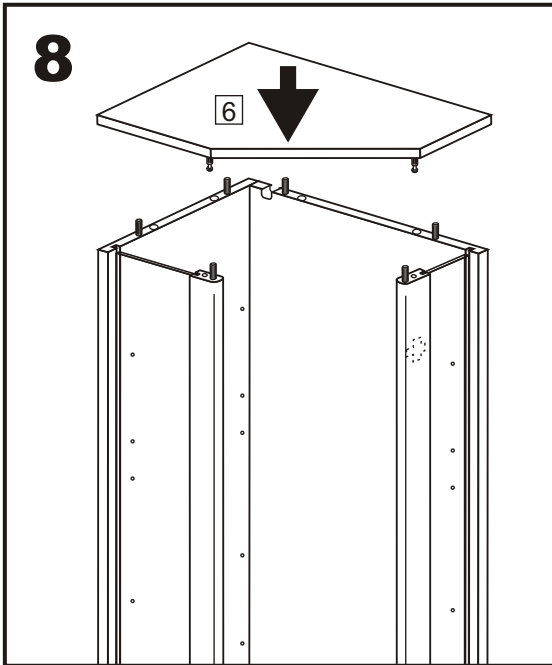
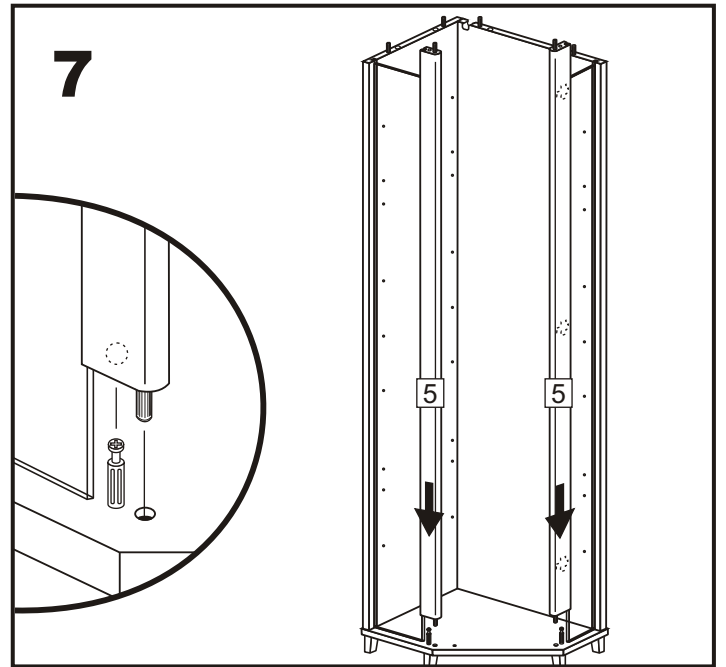
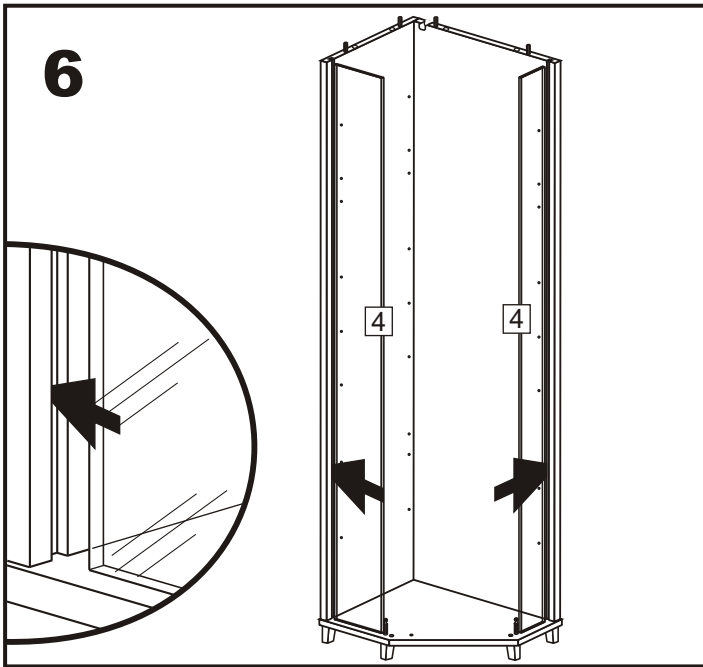
- Wenn Sie separat eine Beleuchtung gekauft haben, bitte jetzt wie folgt montieren.
- When you have bought a lamp separate, please assemble as follow now.
- Si vous avez acheter un éclairage séparément, veuillez procéder au montage de la manière suivante.
- Indien U de verlichting gescheiden hebt gekocht, nu s.v.p. als volgt monteren.
- Quando hai comprato una lampada a parte, si prega assemblarla come riportato di seguito.



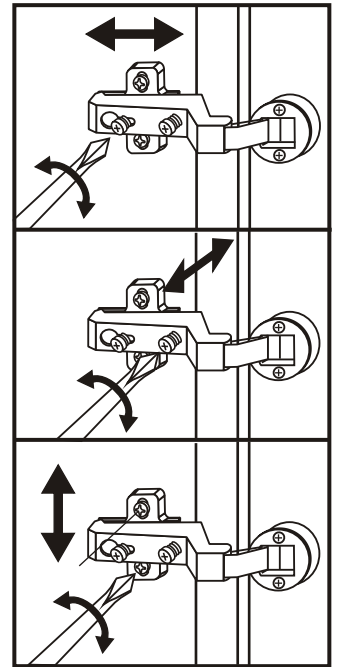
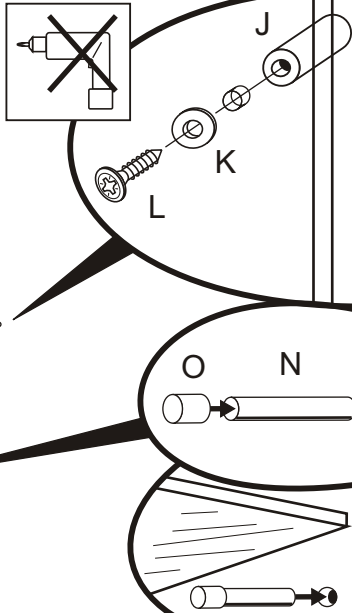
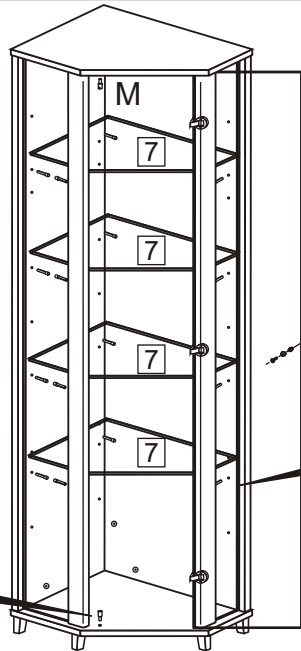
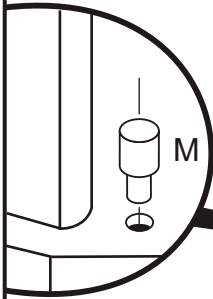
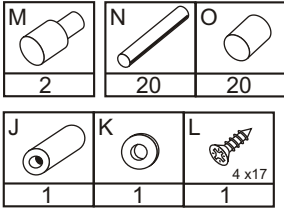
Oberboden  
 cover plate  
 dessus  
 bovenplaat  
 parte superiore



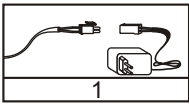




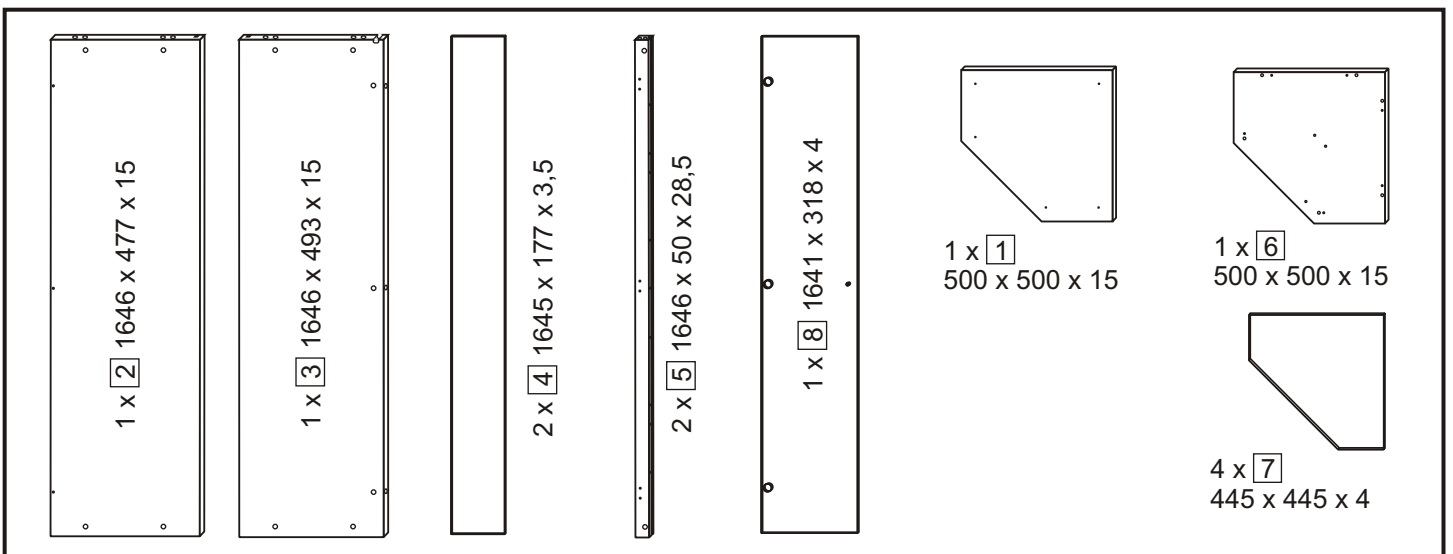
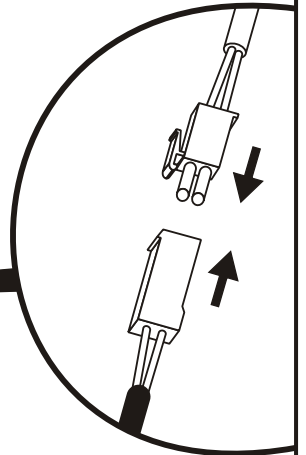
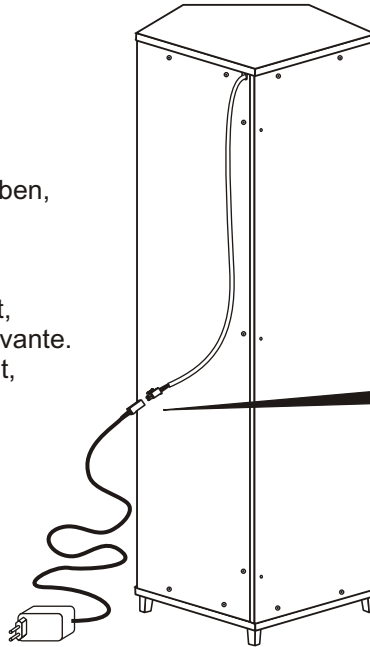
# 11



# 12



- Wenn Sie separat eine Beleuchtung gekauft haben, bitte jetzt wie folgt montieren.
- When you have bought a lamp separate, please assemble as follow now.
- Si vous avez acheter une éclairage séparément, veuillez procéder au montage de la manière suivante.
- Indien U de verlichting gescheiden hebt gekocht, nu s.v.p. als volgt monteren.
- Quando hai comprato una lampada a parte, si prega assemblarla come riportato di seguito.



**Pflegehinweis:** Aluminium-, Glas- und Lackoberflächen sind pflegeleicht. Zum Reinigen genügt das Abwischen mit einem feuchten Tuch oder etwas Seifenlauge. **After care:** To clean the surfaces please use a soft humid cloth and if necessary with some soap.