

RN332000MUK Rev1

morphy richards®

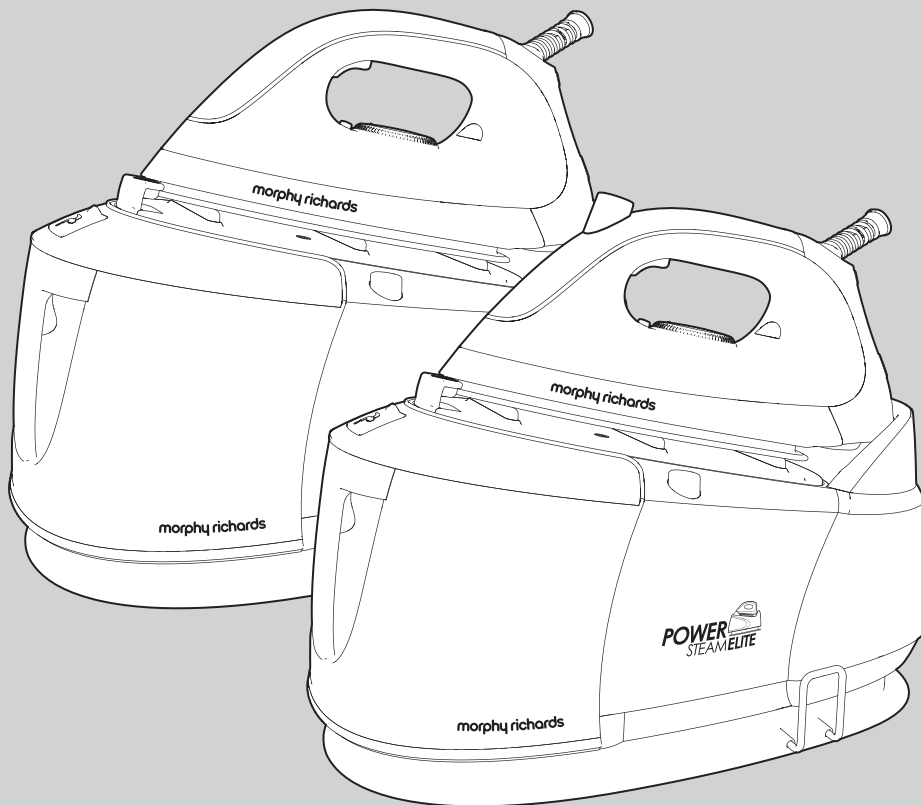
smart ideas for your home



POWER
STEAM ELITE

Steam Generator

Please read and keep these instructions for future use



IMPORTANT: To prevent limescale problems which would not be covered by the guarantee, we recommend the use of a mix of 50% tap water and 50% distilled or demineralised water (available from most large supermarkets).

For competitions, product hints and tips and more join us at



www.morphyrichards.co.uk/blog



www.facebook.com/morphyrichardsuk




[@loveyourmorphy](https://twitter.com/loveyourmorphy)

www.morphyrichards.com

* Register online for your 2 year guarantee. See back of this instruction book for details. (UK and Ireland customers only)

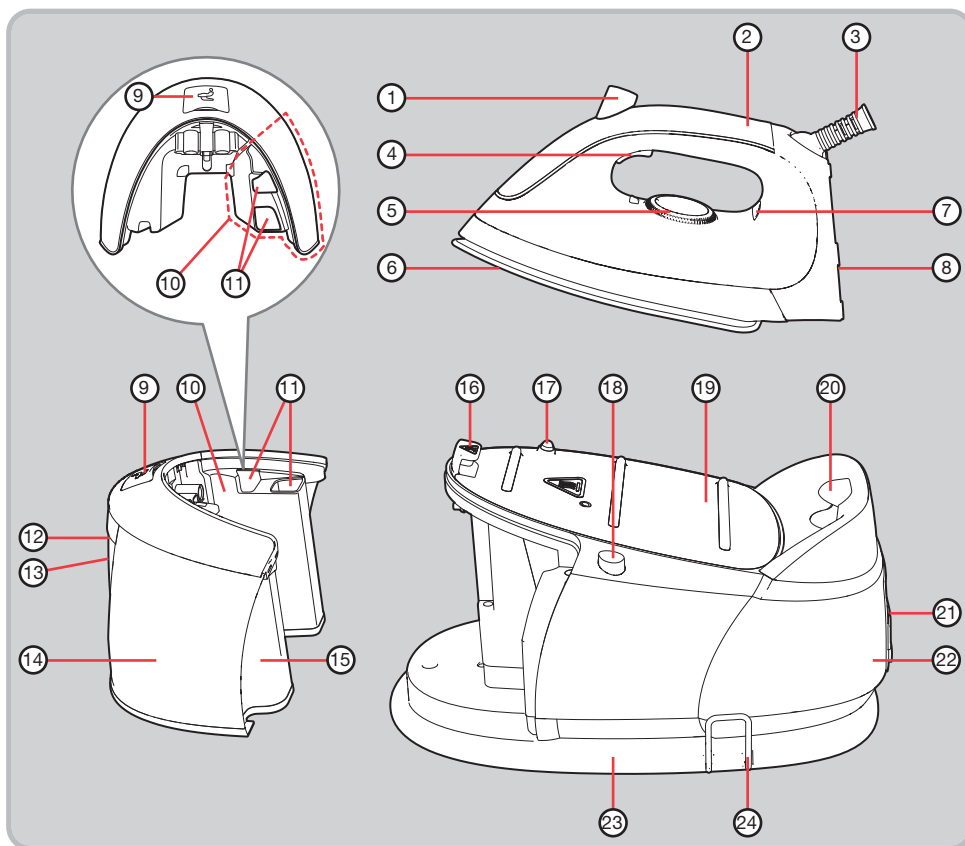
Important safety instructions

- This appliance can be used by children aged from 8 years and above and persons with reduced physical, sensory or mental capabilities or lack of experience or knowledge if they have been given supervision or instruction concerning use of the appliance in a safe way and understand the hazards involved. Children shall not play with the appliance. Cleaning and user maintenance shall not be made by children without supervision.
 - Keep the steam generator and its cord out of reach of children less than 8 years of age at all times.
 - The steam generator must not be left unattended while it is connected to the supply mains.
 - The steam generator must be used and rested on a stable surface.
 - When placing the iron on the steam generator base or on its heel, ensure that the surface on which the heel or base is placed is stable.
 - The steam generator is not to be used if it has been dropped, if there are visible signs of damage or it is leaking.
 - The filling aperture may be opened during use, due to the design of the system.
-  **CAUTION - HOT: Burns can occur from touching hot parts, hot water or steam, or the iron rest plate.**
 - **WARNING: To avoid electric shock, do not immerse appliance in water / liquid.**
 - Check that the voltage on the rating plate of your appliance corresponds with your house electricity supply which must be A.C. (Alternating current).
 - Do not operate with a damaged steam/supply cord or cable pivot, it must be replaced by the manufacturer, its service agent or similarly qualified person in order to avoid a hazard.
 - Do not let the mains lead come into contact with the hot soleplate of the iron.
 - Should the fuse in the mains plug require changing, a 13 amp BS1362 fuse must be fitted.
 - **WARNING: This appliance must be earthed.**

Contents

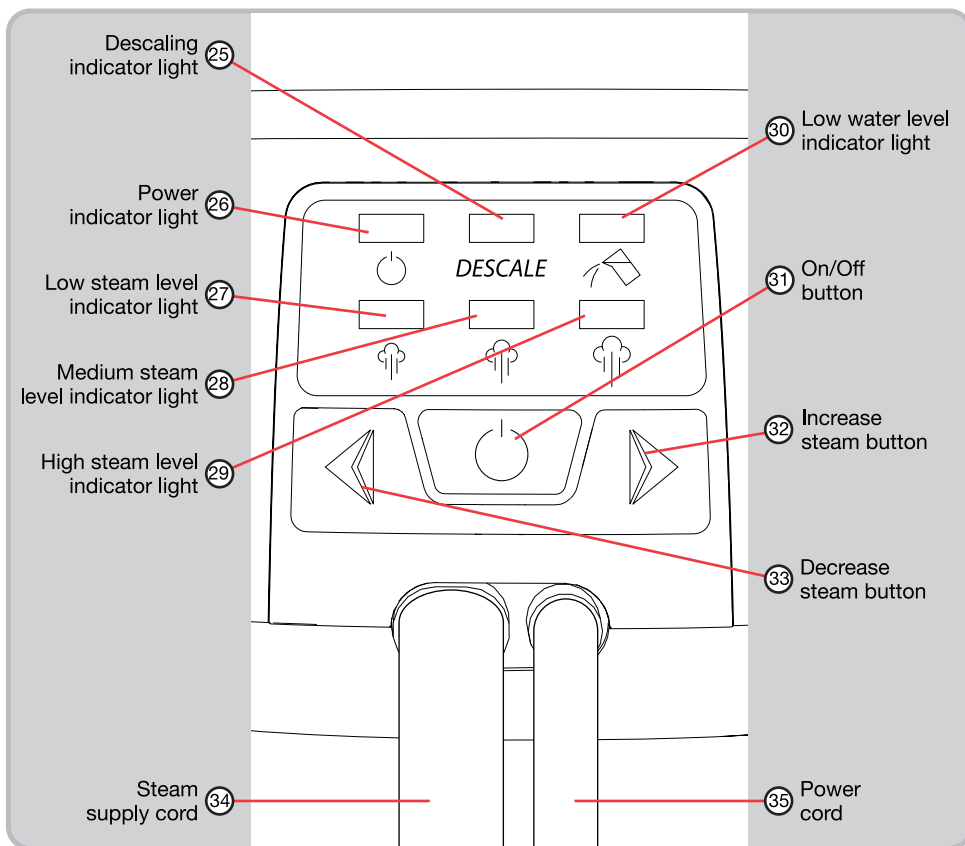
Health and safety	2
Electrical requirements	2
Steam generator overview / Features	4
Control panel overview	5
Temperature guide	6
Location	6
Before use	6
Using the steam generator for steam ironing	7 & 8
Steam boost button (certain models only)	8
Filling	9
Features	9
Maintenance	10
Emptying and storing	11
Contact us	11
Guarantee	12

Steam generator overview



- | | | |
|--|----------------------------------|--------------------------------|
| (1) Steam boost button (certain models only) | (9) Filling cap | (18) Iron release button |
| (2) Iron handle | (10) Dirty water chamber | (19) Iron rest plate |
| (3) Cable pivot | (11) Dirty water emptying holes | (20) Iron rear docking hook |
| (4) Steam trigger | (12) Water tank handle | (21) Control panel (see below) |
| (5) Temperature dial | (13) Water tank release button | (22) Base unit |
| (6) Soleplate | (14) Clean water chamber | (23) Cord storage groove |
| (7) Temperature indicator light | (15) Detachable water tank | (24) Cord clamp |
| (8) Iron heel | (16) Iron-to-base locking hook | |
| | (17) Iron-to-base locking button | |

Control panel (21) overview



Descaling indicator light (25)

When the system performs auto clean (see page 10), the descaling indicator light (25) will illuminate.

On/Off button (31) and Power indicator light (26)

Connect to a mains outlet and press the On/Off Button (31). The power indicator light (26) will illuminate and the low steam level indicator light (27) will flash. To turn off, press and hold the On/Off button (31) for 3 seconds.

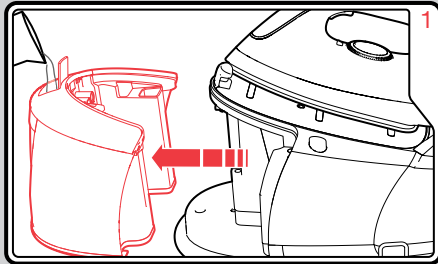
Steam level buttons (32/33)

Press the relevant button to either increase (32) or decrease (33) the steam level. The steam level selected will be displayed by illumination of the relevant steam level indicator light: low (27), medium (28) or high (29). See step 5 of 'Using the Steam Generator for steam ironing' on page 8.

Low water level indicator light (30)

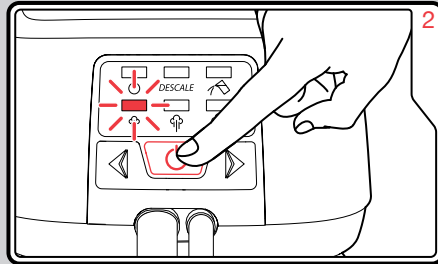
If the water level is too low, the low water level indicator light (30) will illuminate. See 'Filling' on page 9.

Using the Steam Generator for steam ironing

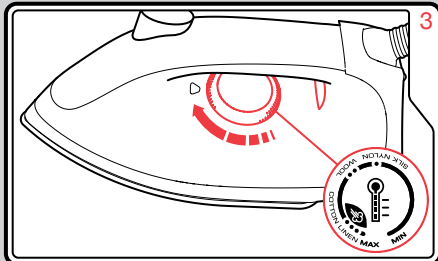


When steam ironing, remove the detachable water tank (15), lift the filling cap (9), and fill with water to the max fill line. Replace the water tank.

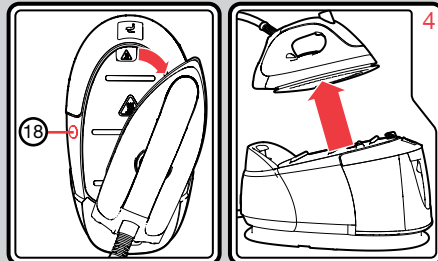
IMPORTANT: Never fill the dirty water chamber (10).



Plug the appliance into a mains outlet, you will hear a beep. Press the On/Off button (31), it will beep again and the power indicator light (26) will illuminate and the low steam level indicator light (27) will flash.



Turn the temperature dial (5) to suit the garment (see 'Temperature guide' on page 6). The temperature indicator light (7) illuminates until the temperature is reached. Begin ironing when the temperature indicator light goes out. If you turn the temperature dial down, wait until the temperature indicator light illuminates and then goes off again.

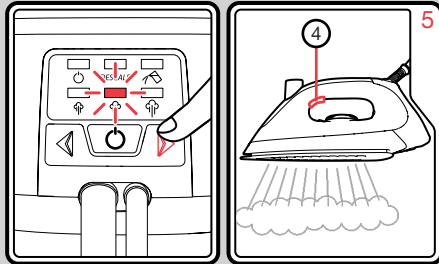


Unlock the iron from its storage position on top of the base unit (22) by pressing and holding the iron release button (18) (marked with a padlock icon) - this enables you to rotate the tip of the soleplate (6) (in a clockwise direction) out from under the iron-to-base locking hook (16) and lift the iron heel (8) away from the rear docking hook (20).

WARNING: To avoid burning yourself if the soleplate is still hot, never press down on the iron-to-base locking button (17) to unlock the iron.

During use, the iron may be rested on the iron rest plate (19) with the soleplate tip on top of the iron-to-base locking hook (16) and the heel slotted on to the rear docking hook.

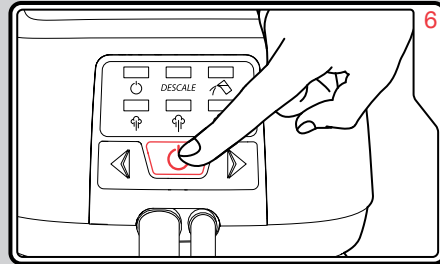
Using the Steam Generator for steam ironing (continued)



Press the relevant button to either increase (32) or decrease (33) the steam level. The selected steam level will be displayed by illumination of the relevant steam level indicator light. The steam level indicator light will stop flashing and illuminate constantly when the selected steam level is reached.

For a strong, continuous flow of steam during ironing, press and hold the steam trigger (4) to deliver steam through the soleplate.

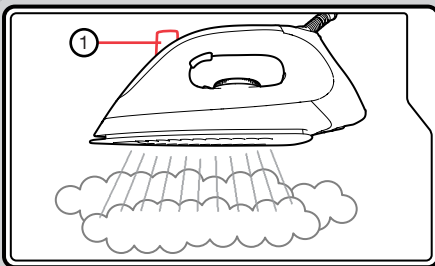
WARNING: The steam supply cord (34) will get hot during use.



When you have finished ironing, turn off the appliance by pressing and holding the On/Off power button (31) for three seconds. A beep will be heard and the power indicator light (26) and steam level indicator (27/28/29) will be extinguished.

Disconnect the plug from the mains outlet.

Steam boost button (certain models only)



The steam boost function is ideal for relaxing the fibres of tougher fabrics (like jeans and linen) and getting rid of those stubborn, hard to reach creases.

To produce a quick, powerful shot of steam during ironing, simply press and release the steam boost button (1).

NOTE: After using the steam boost function, your steam generator iron will require up to 5 seconds to reheat before it can produce a second boost of steam. If you require a high level of constant steam, choose the appropriate steam level and use the steam trigger (4) as instructed above.

Do not combine the two steam functions. Using the two buttons together will interrupt the flow of steam and may result in the constant steam cutting out completely. For optimum steam output, use each steam function separately and as detailed above.

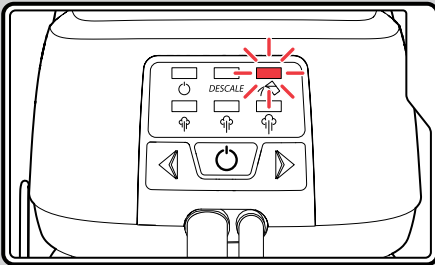
Filling

IN HARD WATER AREAS, WE RECOMMEND A MIX OF 50% TAP WATER AND 50% DISTILLED OR DEMINERALISED WATER.

Never use battery topping up fluid or water containing any substances like starch, sugar, fragrant additives or defrosted water from a refrigerator.

Re-filling during use

If the water level is too low, the low water level indicator light (30) will illuminate, a beep will be heard, and the unit will not produce steam. If this happens, disconnect the water tank and refill with water.



Features

Dry ironing

To use your steam generator as a dry iron only, follow steps 2, 3 and 4 of 'Using the Steam Generator for steam ironing' on page 7. You do not need to put water in the tank or select a steam level. Press either the steam boost button (1) (certain models only) or the steam trigger (4) at least once every 10 minutes, or the product will automatically turn off.

Auto shut-off (certain models only)

If either the steam boost button (1) (certain models only) or the steam trigger (4) goes unused for 10 minutes, the product will automatically turn off for safety and to save energy, and a beep will be heard.

To restart, press the On/Off button (31) (see step 2 of 'Using the Steam Generator for steam ironing' on page 7) and wait for the temperature to rise again.

Steam function

During steaming, small amounts of water may be ejected from the soleplate. This is normal and can be avoided by using the steam for short amounts of time and only when the iron is at the correct temperature (the temperature indicator light (7) on the iron goes out when ready).

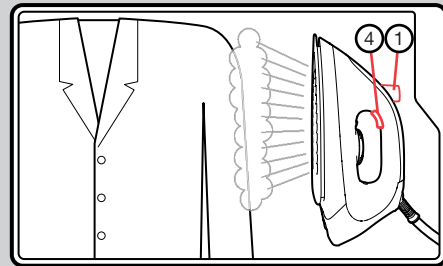
Sudden jolts of the boiler unit can also cause water droplets on the soleplate; therefore, do not move the base unit during ironing.

We recommend for first time ironing that you iron over an old towel.

NOTE: The product may occasionally produce a pumping sound during steam ironing. This is normal and is caused by water being pumped through the steam generator.

Vertical steam

Vertical steam is useful for removing creases from hanging clothes, curtains, upholstery, etc. Hold the iron between 1cm and 2cm away from the item and press either the steam boost button (1) (certain models only) or the steam trigger (4).

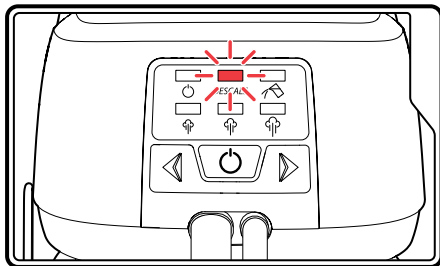


WARNING: Do not use the vertical steam feature on clothes that are being worn.

Maintenance

Auto clean function

Each time approximately 5L of water has been used in the steam generator, it will need to run an auto clean cycle. When the product is fully cooled down and first switched on, it will draw water from the water tank (15) to flush the boiler, emptying dirty water and limescale into the dirty water chamber (10). For this short time, the descaling indicator light (25) will flash and you will be unable to use the product to iron.

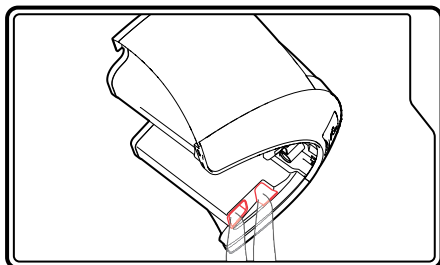


If there is not sufficient water to operate this function, the product will alert you with the low water level indicator light (30) and the process will be paused until the tank is refilled and replaced.

WARNING: During the auto clean process, the water ejected from the machine is very hot, so do not remove the water tank until the auto clean process is finished.

The auto clean process will take approximately 3 minutes, after which the steam generator will be ready for normal operation again. The flashing descaling indicator light (25) will extinguish and the low steam level indicator light (27) will flash, indicating that the steam generator is readying itself for the low steam level setting.

After ironing, switch off the steam generator at the On/Off power button (31) and unplug from the mains outlet. If the auto clean function has activated and completed, wait for the steam generator to cool down completely. Remove the detachable water tank and tip the dirty water from the dirty water emptying holes (11).



IMPORTANT: Ensure the dirty water is emptied after each auto clean cycle to prevent overflow.

WARNING: Dirty water in the dirty water chamber (10) will be hot after the auto clean process, so take care when pouring it out.

To clean a coated soleplate

Do not use scouring powder or solution as this could cause damage to the coating.

If any man made fibres fuse to the soleplate (6), set the iron at the MAX position and pass it over a clean piece of cotton to draw the deposit off the surface.

To clean the exterior

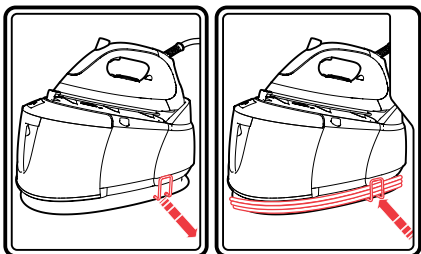
Allow the unit to cool and wipe over with a damp cloth and mild detergent, then wipe dry.

Emptying and storing

Allow the appliance to cool.

Remove the detachable water tank (15) by squeezing the water tank release button (13). Lift the filler cap (9), and empty the water tank. Once the water tank is empty, re-attach it to the base unit (22).

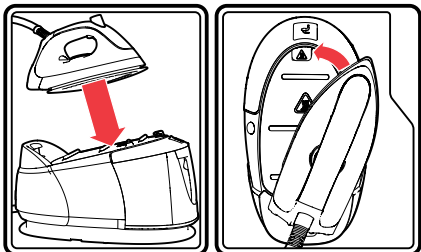
To store, pull the cord clamp (24) outwards. Wrap the power cord (35) and iron steam supply cord (34) around the base unit in the cord storage groove (23). Secure the cord in place with the cord clamp. Avoid kinking of cables, particularly where they meet the base unit.



IMPORTANT: Do not pull too tightly on the iron steam supply cord or on the cable pivot (3) when wrapping the power cord (35) and steam supply cord around the base unit (22). Damage to cables caused by wrapping too tightly will not be covered by the guarantee.

Storing the steam iron

Lock the iron into the storage position on top of the steam generator main body by pushing the soleplate down on the iron-to-base locking button (17) whilst pushing the iron heel (8) onto the rear docking hook (20). The iron should now be at a slight diagonal on the iron rest plate. Pivot the tip of the soleplate (6) under the iron-to-base locking hook (16) until the spring-loaded iron-to-base locking button (17) springs up, securing the iron in place.



Contact us

Helpline

If you are having a problem with your appliance, please call our Helpline, as we are more likely to be able to help than the store you purchased the item from. Please have the product name, model number and serial number to hand when you call to help us deal with your enquiry quicker.

UK Helpline: 0344 871 0944

IRE Helpline: 1800 409 119

Spares: 0344 873 0710

Talk To Us

If you have any questions or comments, or want some great tips to help you get the most out of your products, join us online:

Blog: www.morphyrichards.co.uk/blog

Facebook: www.facebook.com/morphyrichardsuk

Twitter: @loveyoumorphy

Website: www.morphyrichards.com

RN332000MUK Rev1 09/14

Registering your 2 year guarantee

Your standard 1 year guarantee is extended for an additional 12 months when you register the product within 28 days of purchase with Morphy Richards. If you do not register the product with Morphy Richards within 28 days, your product is guaranteed for 1 year. To validate your 2 year guarantee register with us online at

www.morphyrichards.co.uk

Or call our customer registration line

UK 0344 871 0242

IRE 1800 409 119

N.B. Each qualifying product needs to be registered with Morphy Richards individually.

Please note that the 2 year guarantee is only available in the UK and Ireland. Please refer to the 1 year guarantee for more information.

Your 1 year guarantee

It is important to retain the retailer's receipt as proof of purchase. Staple your receipt to this back cover for future reference.

Please quote the following information if the product develops a fault. These numbers can be found on the base of the product.

Model no.

Serial no.

All Morphy Richards products are individually tested before leaving the factory. In the unlikely event of any appliance proving to be faulty within 28 days of purchase, it should be returned to the place of purchase for it to be replaced.

If the fault develops after 28 days and within 12 months of original purchase, you should contact the Helpline number quoting Model number and Serial number on the product, or write to Morphy Richards at the address shown.

You may be asked to return a copy of proof of purchase.

Subject to the exclusions set out below (see Exclusions), the faulty appliance will then be repaired or replaced as appropriate and dispatched usually within 7 working days of receipt.

If, for any reason, this item is replaced or repaired during the 1 year guarantee period, the guarantee on the new item will be calculated from original purchase date. Therefore it is vital to retain your original till receipt or invoice to indicate the date of initial purchase.

To qualify for the 1 year guarantee, the appliance must have been used according to the instructions supplied. For example, water should be emptied after each use.

Exclusions

Morphy Richards shall not be liable to replace or repair the goods under the terms of the guarantee where:

- 1 The fault has been caused or is attributable to accidental use, misuse, negligent use or used contrary to the manufacturer's recommendations or where the fault has been caused by power surges or damage caused in transit.
 - 2 The fault is caused by limescale build-up.
 - 3 The cables are damaged due to wrapping too tightly or excessive kinking.
 - 4 The appliance has been used on a voltage supply other than that stamped on the products.
 - 5 Repairs have been attempted by persons other than our service staff (or authorised dealer).
 - 6 The appliance has been used for hire purposes or non domestic use.
 - 7 The appliance is second hand.
 - 8 Morphy Richards reserves the right not to carry out any type of servicing under the guarantee at its discretion.
- This guarantee does not confer any rights other than those expressly set out above and does not cover any claims for consequential loss or damage. This guarantee is offered as an additional benefit and does not affect your statutory rights as a consumer. Morphy Richards products are intended for household use only. See usage limitations within the location safety instructions.

Disclaimer

Morphy Richards has a policy of continuous improvement in product quality and design. The company, therefore reserves the right to change the specification of its models at any time.



For electrical products sold within the European Community. At the end of the electrical products useful life, it should not be disposed of with household waste.

Please recycle where facilities exist. Check with your Local Authority or retailer for recycling advice in your country

**IF YOU ARE HAVING A PROBLEM
WITH ONE OF OUR PRODUCTS,
CALL OUR HELPLINE:**

**UK: 0344 871 0944
EIRE: 1800 409 119
SPARES: 0344 873 0710**

morphyrichards

The After Sales Division
Morphy Richards Ltd
Mexborough,
South Yorkshire,
England, S64 8AJ

www.morphyrichards.com

