

NEXT BASE

iN-CAR CAM™

Instruction Manual

inc. Driving Recorder Player Software Installation Guide



402G | Professional
High Definition Car DVR with GPS

TABLE OF CONTENTS

PRECAUTIONS	04
CAUTIONS ON USING THIS PRODUCT	04
PRODUCT SPECIFICATION	05
PACKAGE CONTENTS	06
PRODUCT FEATURES	06
PARTS & CONTROLS	07
IN VEHICLE INSTALLATION	09
VIDEO MODE	11
PHOTO MODE	12
PLAYBACK MODE	
VIDEO PLAYBACK	13
PHOTO PLAYBACK	14
MENUS AND SETTINGS	
VIDEO MODE	15
PHOTO MODE	17
PLAYBACK MODE	17
SETUP MENU	18
PC CONNECTION	
MASS STORAGE	19
PC CAMERA	19
MAC CONNECTION	
MASS STORAGE	19
VIDEO & AUDIO OUTPUT	
HIGH DEFINITION OUTPUT	20
STANDARD DEFINITION OUTPUT	20
DRIVING RECORDER PLAYER FOR WINDOWS	21
MINIMUM SYSTEM REQUIREMENTS	21
INSTALLATION	22
USING THE DRIVING RECORDER PLAYER	26
FEATURES & CONTROLS	27
DRIVING RECORDER PLAYER FOR MAC	29
MINIMUM SYSTEM REQUIREMENTS	29
INSTALLATION	30
USING THE DRIVING RECORDER PLAYER	32
FEATURES & CONTROLS	33
TROUBLING SHOOTING	35

PRECAUTIONS

Please read this manual carefully before operation and keep it for future reference. It will be helpful should you encounter any operational problem.

WARNING: Do not expose this product to rain, moisture or water under any circumstances, doing so may result in the risk of electric shock of fire.

CAUTION: To reduce the risk of electric shock, do not perform any servicing other than that contained in the instruction manual unless you are qualified to do so.
Have the unit serviced by a qualified service technician if;
The unit has been exposed to rain or water.
The unit does not seem to operate normally.
The unit exhibits a marked change in performance.

LCD: A Liquid Crystal Display (LCD) screen is a multilayer complex component, containing 230,400 pixels. Pixels can however fail during normal product life. 1 pixel = 0.0004% failure rate, and one pixel failure per year of operation is considered normal and not a cause for concern.

WEEE: **Disposal of Waste Electrical and Electronic Equipment and/or Battery by users in private households in the European Union.**



This symbol on the product or on the packaging indicates that this can not be disposed of as household waste. You must dispose of your waste equipment and/or battery by handing it over to the applicable take-back scheme for the recycling of electronic equipment and/or batteries.

For more information please contact your local household waste disposal office.

DO NOT ATTEMPT TO SERVICE THE UNIT BY YOURSELF!

CAUTIONS ON USING THIS PRODUCT

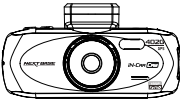






1. Ensure that the windscreen is free of dirt or grease before placing mount upon it.
2. Do not obscure the view of the road ahead or impede the deployment of any airbags in the event of an accident.
3. When not in use, please disconnect the car adaptor from both the 12/24Vdc outlet in your vehicle and the device itself.
4. Only clean the device with a soft dry cloth, for tough dirt, apply some neutral detergent diluted in 5 to 6 parts water to a soft cloth.
Note that alcohol, thinner, benzene etc could cause damage to the paint or coatings.
5. Avoid making contact with the lens as damage may be caused.
6. If required clean the glass lens carefully using spectacle lens cleaning fluid on a soft cloth only.
7. The video recordings made by this Digital Video Recorder are intended for personal use only.
8. Publication of the recordings on Youtube, the internet or other methods are subject to the Data Protection Act and the requirements thereof must be adhered to.
If the Digital Video Recorder is to be used within a commercial environment, i.e. truck use, then the CCTV regulation apply also, in addition to the Data Protection Act regulations. This includes labelling to identify the use of CCTV is taking place, the omission of Audio recording and informing the relevant authorities of who controls the data.
9. Video playback upon the device which is visible to the driver is prohibited or restricted in some countries or States. Please adhere to these laws.
10. Whilst driving, do not adjust the controls of your device as this is a distraction to driving.

PRODUCT SPECIFICATION

Model Number / Name	NBDVR402G / NEXTBASE iN-CAR CAM 402G PROFESSIONAL
Power Requirements	5V / 600mA
Power Supply	12-24Vdc Car Power Cable (supplied) Fuse Type: 20mm Glass Fast Blow 2A Output: 5Vdc
Sensor Resolution	3M Pixel (3,000,000 Pixel)
Lens Type / Angle / Aperture	6G / 140° / F1.6
Recording Resolution (Max.)	1920 x 1080 @ 30fps, 2.0Mb/s
Screen Size	2.7"
Screen Resolution	960 (W) X 240 (H) pixels x RGB
Screen Ratio	16:9
Card Reader	MicroSD, Class 6-10, <=32GB
SD Card (Recommended Type)	8-32GB Class 10 (30mb/s) branded (not supplied)
SD Card Recorded File Capacity (based on default settings)	8GB Micro SD = 60mins of recording 16GB Micro SD = 120mins of recording 32GB Micro SD = 240mins of recording
Recording Format	MOV
Video Out	High Definition: Type C Socket (Video / Audio) Standard Definition: 3.5mm Jack (Video / Audio)
Internal Battery	Lithium-ion 3.7V / 200mAh (approx. 6mins recording time) Battery design allows the 'Auto Power Off' feature to function in event of power loss within the vehicle. It is not intended as an alternative power source to replace the supplied car adaptor. The battery will only charge when the iN-CAR CAM is connected to a power source and switched on.
Unit Dimensions	107 x 61.5 x 37.5mm
Unit Weight	100g

PACKAGE CONTENTS

Please check the contents of your iN-CAR CAM product.

<p>iN-CAR CAM</p> 	<p>Mount</p> 	<p>Car Power Cable</p> 	<p>USB Cable</p> 
<p>HD Cable</p> 	<p>Manuals & Software Disk</p> 	<p>Quick Start Guide</p> 	

Product appearance may differ slightly to that shown above.

PRODUCT FEATURES

Thank you for purchasing this NEXTBASE iN-CAR CAM product, in this section we will outline some of the features available with this device.

2.7" 16:9 LCD Colour Screen

Large screen for ease of use and viewing the playback of recorded videos and photos.

3.0M PIXEL CMOS Sensor

Provides high quality recording up to 1920 x 1080P Full HD.

GPS Logger

GPS co-ordinates, date and time are recorded, the journey can then be viewed on a map using the supplied Windows / Mac playback software.

G Sensor / File Protection

In the event of an impact the device will automatically 'protect' the recording, stopping the file from being over-written.

Individual files can also be 'protected' when viewed within playback mode.

Still Camera

Take still images with a variety of options / settings available.

Automatic Start / Stop Technology

The iN-CAR CAM senses power supplied to the cigarette power socket as soon as the vehicle ignition is turned on and will start to record automatically.

When the ignition is turned off, the iN-CAR CAM will perform an automatic shutdown process.

Built-in Microphone & Speaker

Record audio to compliment the video recordings.

High Definition Output

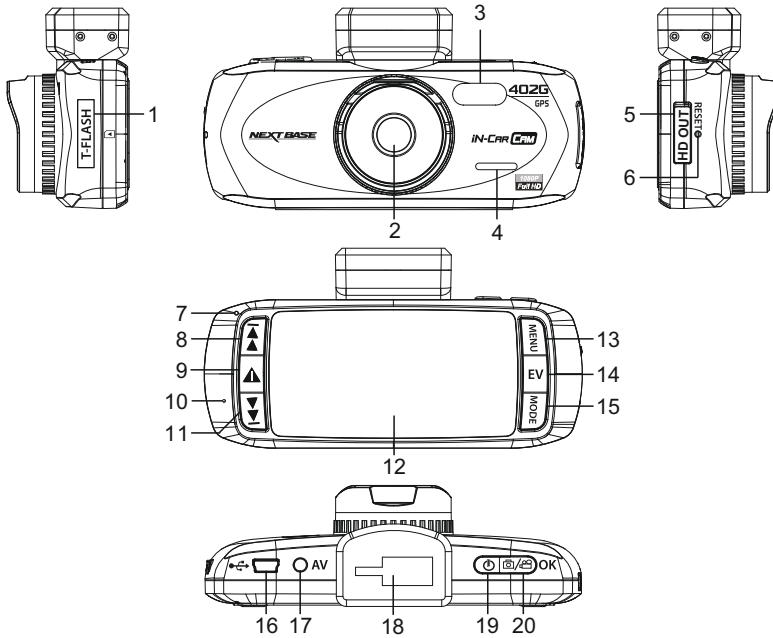
View files directly from your device using the supplied High Definition cable to an external screen.

Windows is a registered trademark of Microsoft Corporation in the United States and other countries.

Mac is a trademark of Apple Inc

2012 Google Inc. All rights reserved. Google Maps™ is a trademark of Google Inc.

PARTS & CONTROLS



1. MEMORY CARD SLOT (under dust cover)

Insert MicroSD memory card here.

2. LENS

3. LED LAMPS

Turn on/off within Setup menu.

4. SPEAKER

5. HD OUT SOCKET (under dust cover)

For use with High Definition Cable.

6. RESET

Press to reset the iN-CAR CAM.

7. LED INDICATOR

Car adaptor connected and iN-CAR CAM switched on:

- PURPLE = Battery charging
- RED = Battery charged
- RED FLASHING = Recording

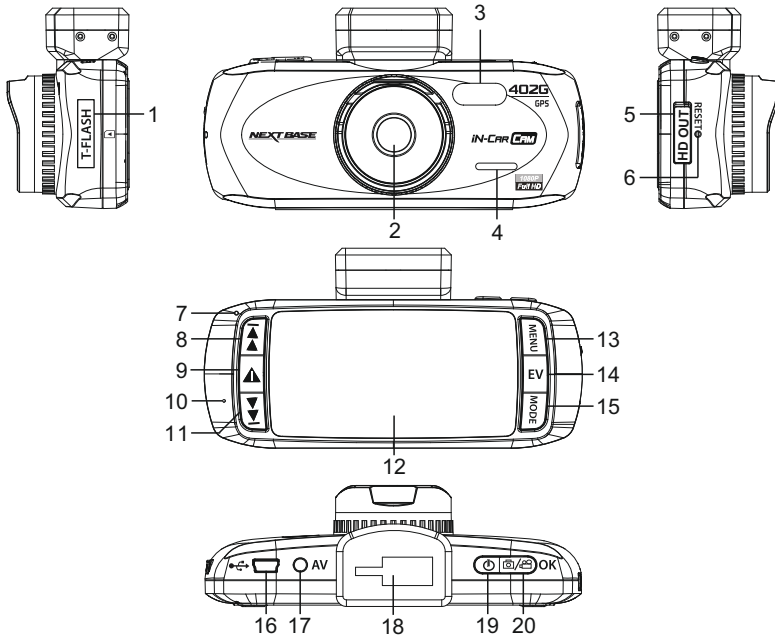
Note:

The battery will only charge when the iN-CAR CAM is connected to power source and switched on.

8. UP

Press to navigate up within menus and to move to the next file when in playback mode.

PARTS & CONTROLS (CONTD.)



9. SOS FILE PROTECTION

'One touch button' to protect current recording in the event of an emergency situation.

10. MICROPHONE

11. DOWN

Press to navigate down within menus and to move to the previous file when in playback mode.

12. LCD SCREEN

13. MENU

Press to open the Menu within current mode. Press twice to open the Setup menu.

14. EXPOSURE (EV)

Press to toggle through exposure settings.

15. MODE

Press to select: Video / Photo / Playback modes.

16. MINI USB 2.0 SOCKET

Connect car power cable / USB cable here.

17. AV OUT SOCKET

For use with AV Cable (sold separately).

18. MOUNTING POINT

Attached supplied windscreen mount here.

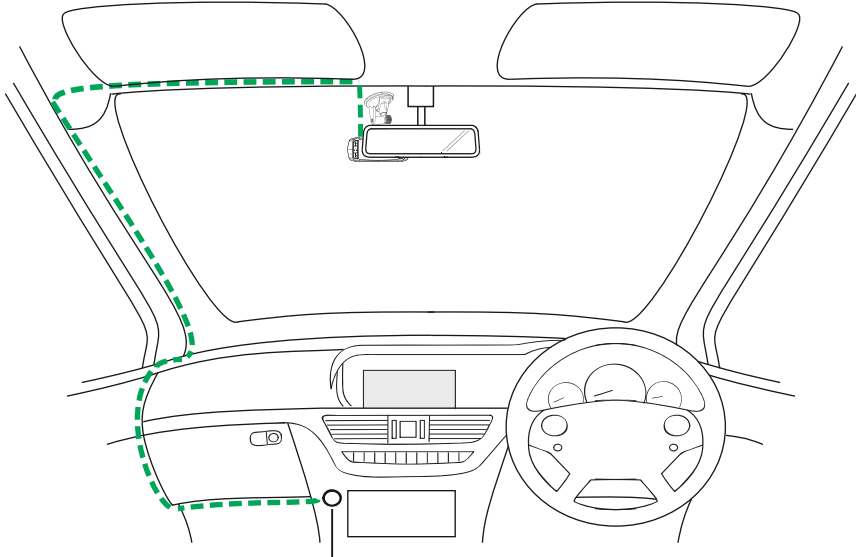
19. POWER


Press and to turn on / off the iN-CAR CAM.

20. START / STOP & OK

Press start, stop a recording or to confirm selection.

IN VEHICLE INSTALLATION



 12-24V DC

The above diagram is for illustration purposes only.

1. Open dust cover and insert a suitable memory card in to the iN-CAR CAM, taking care to follow correct orientation markings (gold contacts facing the back of the device). Push the memory card until it clicks into place and close dust cover.
Do not remove or insert the memory card when the iN-CAR CAM is turned on. This may damage the memory card.
Note:
Use the edge of a small coin (or similar object) to push the memory card in place if required. A second push inwards will release the memory card.
2. Attach the iN-CAR CAM to the supplied windscreen mount, taking care the locking tab has 'clicked' firmly into place.
3. Remove the protective plastic film from the suction pad. Select the required position for the windscreen mount and clean windscreen with a dry / clean cloth to achieve good contact between the glass and mount.
While holding the suction cup onto the glass push the locking lever upwards to secure the mount to the windscreen.
Please ensure that once mounted the iN-CAR CAM is located within the area of the vehicles windscreen wipers to maintain a clear view during rainfall.
Note:
Choose a smooth glass area without painted effect.
4. The angle and position of the iN-CAR CAM can be adjusted by loosening the locking clamp and moving as required, remembering to re-tighten the clamp.
5. Connect the car adaptor to mini-USB socket of the iN-CAR CAM and then plug the supplied car adaptor into the 12-24Vdc outlet of your vehicle. The iN-CAR CAM will automatically power on and start recording once power is available.
In some vehicles this will be when connections are made, for others the device will power on once the ignition has been turned on.

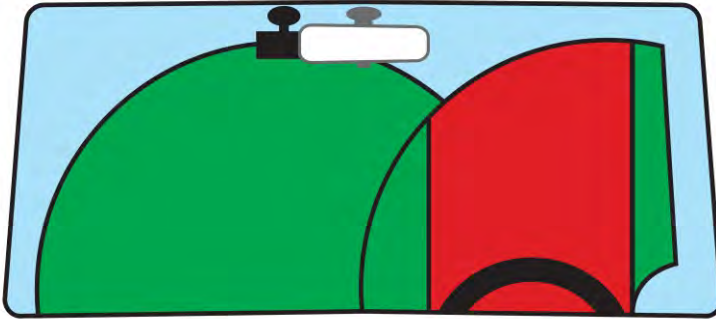
Note:

- Do NOT wire the iN-CAR CAM directly to a 12V supply or damage will result.
- ONLY use the supplied car adaptor cable to supply 5Vdc to the iN-CAR CAM.

IN VEHICLE INSTALLATION (CONTD.)

Please read and follow the notes below for the safe operation of your iN-CAR CAM within your vehicle.

As per the installation instructions, it is advised to install the iN-CAR CAM so it does NOT obstruct the drivers view of the road, preferably on the passenger side of the vehicle and behind the rear view mirror. Whilst the iN-CAR CAM clearly needs to view through the windscreen in an area swept by the windscreen wipers, the iN-CAR CAM should be installed so as not to intrude significantly within the wiped area. A 40mm intrusion into the wiped area is the maximum recommended.



Do NOT mount the iN-CAR CAM in front of the driver, as depicted by the red area in the above illustration.

When installing the iN-CAR CAM in a vehicle, always place the device securely against the windscreen and where possible conceal the power cable under trim. Make sure that the iN-CAR CAM power cable does not interfere with the drivers operating controls, such as the steering wheel, pedals or gear levers.

Do NOT mount the iN-CAR CAM in front of an airbag field of deployment or in a position to obscure any mirrors.

Clean the windscreen at the point of location, prior to fitting the iN-CAR CAM, also, applying some moisture to the suction cup may be beneficial, to ensure absolute adhesion.

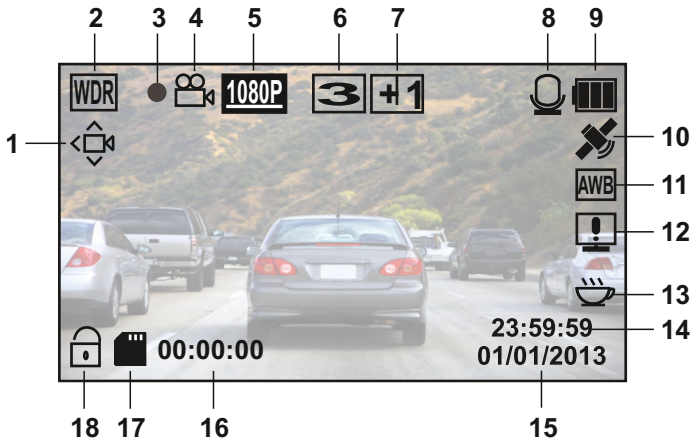
It is recommended NOT to operate the iN-CAR CAM whilst driving. The automatic Start-Stop technology incorporated within the device negates any need to operate the controls whilst driving.

Adjust any settings or review recordings whilst stationary, not whilst driving.

After the preliminary SETUP has been carried out upon the iN-CAR CAM, adjust the Screen Saver setting to 10 Seconds, this will blank the screen automatically shortly after starting the vehicle and the screen will NOT be a distraction in any way to the driver.

VIDEO MODE

The key below explains the various information displayed on the screen when your iN-CAR CAM is in Video mode, some icons will only be displayed once the relevant function has been selected within the Video menu, as described further down this page.



1. Motion Detection Icon: This icon appears if motion detection is switched on.
2. WDR Icon: Remains on screen as iN-CAR CAM utilises WDR technology.
3. Recording Indicator: Flashes red when a recording is in progress.
4. Video Mode Icon: Indicates the iN-CAR CAM is in Video mode.
5. Resolution: Displays the current resolution as selected from within the Video menu.
6. Loop Recording Icon: Displays 'recording loop' time as selected within the Video menu.
7. Exposure Icon: Displays current exposure setting as selected from within the Video menu.
8. Microphone Icon: Displayed on screen when Audio Recording is active.
9. Battery Indicator: Displays battery level, keep the car adaptor plugged in during use.
10. GPS Icon: The icon will flash while the iN-CAR CAM locates satellites. Once a stable signal is received, the icon will stop flashing and remain on screen.
11. White Balance Icon: Displays White Balance setting.
12. Compass / Speed Display Icon: Shown on screen when function has been turned on.
13. Driver Fatigue Icon: Shown on screen when function has been turned on.
14. Time: Displays current time as set within the Setup menu.
15. Date: Displays current date as set within the Setup menu.
16. Recording Time: Displays the length of current recording.
17. Memory Card Icon: Icon will be marked with a red cross when there is no memory card inserted.
18. Protected File Icon: Displayed when a video file has been protected by activation of the internal G Sensor or by pressing the SOS file protect button.

The Video menu is accessed by using the MENU button located on the rear of the iN-CAR CAM, use the UP and DOWN buttons to navigate through the Menu and press the OK button to enter the options screen. Select the required setting and press OK to confirm, press MENU once more to exit the Video Menu.

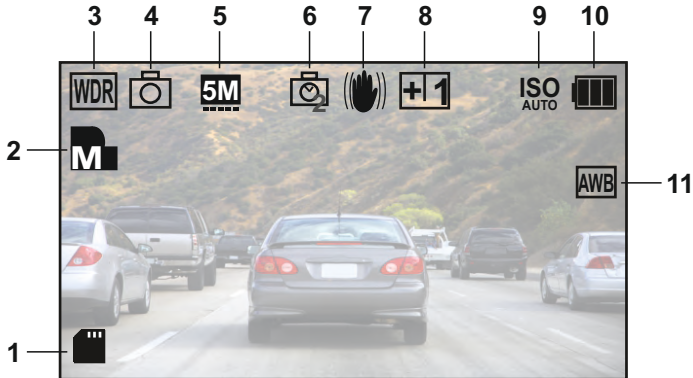
The default settings within the iN-CAR CAM have been set to allow you to use the iN-CAR CAM without the need to change any settings, however it is recommended that you explore these settings to familiarise yourself with the product and its capabilities.

Note:

Within the SETUP menu which is accessed by pressing the MENU button twice, there is a 'Default Setting' option to allow you to reset the iN-CAR CAM to the factory defaults, if required.

PHOTO MODE

The key below explains the various information displayed on the screen when your iN-CAR CAM is in Photo mode, some icons will only be displayed once the relevant function has been selected within the Photo menu, as described further down this page.



1. Memory Card Icon: Icon will be marked with a red cross when there is no memory card inserted.
2. Quality: Displays the current image quality as set within the Photo menu.
3. WDR Icon: Remains on screen as iN-CAR CAM utilises WDR technology.
4. Photo Mode Icon: Indicates the iN-CAR CAM is in Photo mode.
5. Resolution: Displays the current resolution as set within the Photo menu.
6. Capture Mode Icon: Displayed on screen when Capture Mode (timer) is selected from within the Photo menu.
7. Anti-Shaking Icon: Displayed on screen when Anti-Shaking is active, when function is Off the icon will be marked with red stop sign.
8. Exposure Icon: Displays current exposure setting as selected from within the Photo menu.
9. ISO Icon: Displays the current ISO setting as selected within the Photo menu.
10. Battery Indicator: Displays battery level, keep the car adaptor plugged in during use.
11. White Balance Icon: Displays the current White Balance setting as selected within the Photo menu.

The Photo menu is accessed by using the MENU button located on the rear of the iN-CAR CAM, use the UP and DOWN buttons to navigate through the Menu and press the OK button to enter the options screen. Select the required setting and press OK to confirm, press MENU once more to exit the Photo Menu.

The default settings within the iN-CAR CAM have been set to allow you to use the iN-CAR CAM without the need to change any settings, however it is recommended that you explore these settings to familiarise yourself with the product and its capabilities.

Note:

Within the SETUP menu which is accessed by pressing the MENU button twice, there is a 'Default Setting' option to allow you to reset the iN-CAR CAM to the factory defaults, if required.

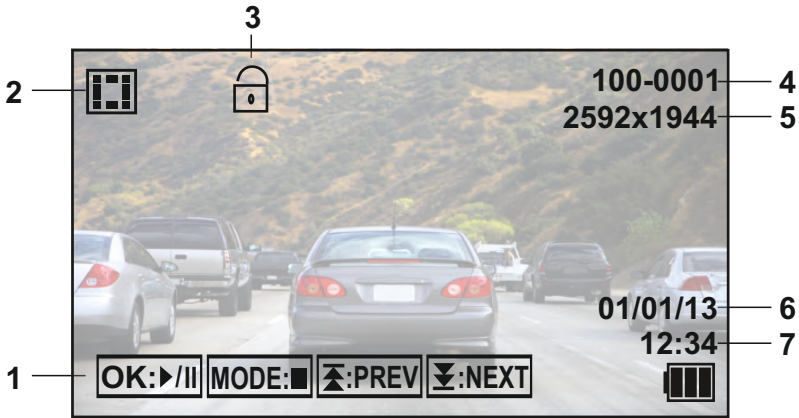
PLAYBACK MODE

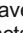

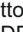
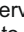
The iN-CAR CAM can display Videos and Photos stored upon the SD card when in Playback Mode. The displays for video and photo playback differ slightly, please refer to the relevant section.

VIDEO PLAYBACK

When a video is detected upon the SD Card, the screen below is shown.

The key below explains the various information displayed on the screen, during video playback and how to use the control buttons.



1. Control Buttons: To scroll through the saved files use the  and  buttons, to view a chosen video press the OK button which then acts as a play / pause button during playback. During video playback, the  and  buttons will serve as rewind and fast forward respectively, once the video is paused press the MODE button to continue scrolling through the saved files.
2. Video Playback Icon: Indicates the iN-CAR CAM is displaying a video in the Playback mode.
3. Protected File Icon: Displayed when a video file has been protected by activation of the internal G Sensor or by pressing the SOS file protect button during recording, during recording or by selecting 'Protect' from within the playback menu.
4. File Number: Displays current file number.
5. Resolution: Displays the resolution that current video was recorded in.
6. File Date: Displays date current file was recorded.
7. File Time: Displays start time current file was recorded.

Recommended PC playback software, required for Windows when no internet connection is available:

QuickTime (free download from www.apple.com/uk/quicktime/download)

VLC Media Player (free download from www.videolan.org/vlc)

PLAYBACK MODE (CONTD.)**PHOTO PLAYBACK**

When a photo is detected upon the SD Card, then the screen below is shown.

The key below explains the various information displayed on the screen, during photo playback.



1. Photo Playback Icon: Indicates the iN-CAR CAM is displaying a photo in the Playback mode.
2. Protected File Icon: Displayed when a photo file has been protected by selecting 'Protect' from within the playback menu.
3. File Number: Displays current file number.
4. Resolution: Displays the size of current photo.
5. File Date: Displays date current file was recorded.
6. File Time: Displays start time current file was recorded.

Note:

To view the NEXT or PREVIOUS item stored upon the SD Card press the **↵** or **⏪** button respectively.

MENUS AND SETTINGS

Each mode (Video, Photo and Playback) has a menu used to access the various options and settings, press the MENU button on the rear of the device to access the menu, specific to the current mode selected.

Note: Menus are not accessible whilst the iN-CAR CAM is recording, stop recording prior to pressing the 'MENU' button.

Use the UP, DOWN buttons to select chosen option and press the OK button to confirm.

1. VIDEO MODE

1.1 Resolution

Select recording resolution, this will increase or decrease the quality of the recorded video.
Default Setting: 1080P (1920x1080 @ 30Fps)

1.2 Exposure

Select exposure, used to adjust exposure level for different light conditions.
Default Setting: 0

1.3 White Balance

Adjust the white balance for different light conditions.
Default Setting: Auto

1.4 Record Audio

Turn On / Off audio recording.
Default Setting: On

1.5 Date Stamp

Turn On / Off the date stamp shown on recorded files.
Default Setting: On

1.6 Loop Recording

Select duration of recording length for the individual video files, the iN-CAR CAM will fill the SD Card then loop back to the beginning, overwriting the oldest files (unless protected).
Default Setting: 3 Minutes

Note: Do NOT set this to Off or recording will simply stop when the SD card is full.
Set to a timed loop to enable the file management function to operate and perform continuous recording.

1.7 G Sensor

Turn Off or adjust the sensitivity of the G Sensor, it is the G Sensor that detects forces which will automatically protect the current recording in event of a collision.
Default Setting: Middle

1.8 Motion Detection

Turn On / Off the motion detection function, the device will need to remain on and will start a 10 second recording when a change to the viewed scene is detected.

Default Setting: Off

Note: Set to Off (default) for normal driving recording.

1.9 Number Plate

Enter the registration number for your vehicle, this will then be shown on the video file.
Default Setting: *****

1.10 Driver Fatigue Warning

Set the timer which will display an image of a hot beverage to serve as a reminder to take sufficient rest when on a long journey.

Default Setting: Off

1.11 GPS Stamp

Turn On / Off the GPS co-ordinate stamp shown on recorded files, co-ordinates and map will function as normal when viewed with the Driving Recorder Player no matter whether this function is set to On or Off.

Default Setting: On

MENUS AND SETTINGS (CONTD.)**1.12 Compass**

When turned on, the screen will display current speed and a compass after the selected period of time, press any button to return to normal viewing, this function is only available when a GPS connection is present.

Default Setting: Off

1.13 Password Settings

Set a password that will need to be entered to access menus and settings, only basic functions of power on / off and start / stop remain available.

1.14 Speed Units

Select whether to record and display speed in KMH or MPH.

Default Setting: MPH

1.15 Rotate Display

Rotate the display 180°, particularly useful should iN-CAR CAM be mounted on the dashboard, the iN-CAR CAM control button functions do not rotate.

MENUS AND SETTINGS (CONTD.)

2. PHOTO MODE

2.1 Image Size

Select image size, this will increase or decrease the size of the recorded image
Default Setting: 5M

2.2 Colour

Adjust the colour effect of the recorded image.
Default Setting: Normal

2.3 Anti-Shaking

Turn On / Off the anti-shaking feature, may help reduce image being blurred.
Default setting: On

2.4 Capture Mode:

Turn On / Off the timer function, when this feature has been turned on, the iN-CAR CAM will take a photo the selected period of time after the OK button has been pressed.
Default Setting: Single

2.5 White Balance

Adjust the white balance for different light conditions.
Default Setting: Auto

2.6 ISO

Adjust the ISO setting, the brighter the conditions the lower the ISO required.
Default setting: Auto

2.7 Exposure

Select exposure, used to adjust the amount of light received by the sensor.
Default setting: 0

2.8 Date Stamp

Turn Off the date stamp shown on recorded photographs, can also change to date only.
Default setting: Date / Time

2.9 Quality

Increase or decrease the quality of the recorded image.
Default Setting: Normal

2.10 Sharpness

Adjust the sharpness of the recorded image.
Default Setting: Normal

3. PLAYBACK MODE

The playback menu is the same when viewing either videos or photos.

3.1 Delete

Used to delete the current file, also available is the option of deleting all files.

3.2 Protect

Used to lock or unlock the current file, also available is the option of locking / unlocking all files.

3.3 Slide Show

Used to start a slide show of images stored on the SD card, press the Menu button to exit the slide show.

MENUS AND SETTINGS (CONTD.)

4. SETUP MENU

There is also a Setup menu for the general settings, press the MENU button twice on the rear of the device to access the menu. The options and settings available are described below.

4.1 Format

Format the inserted memory card, this will delete all content.

A good practice monthly to ensure your SD card performs to it's full potential.

4.2 Language

Set the language as required.

Default Setting: English

4.3 Date / Time

Adjust the date / time as required using the OK button to toggle through fields, use the **↵** and **⏏** buttons to set variables.

Note: In event of the battery becoming fully dis-charged, the date will reset to 01/01/2013.

4.4 Time Zone / DST

The Time and Date is automatically set from the satellite signal, but can be adjusted dependant upon your Time Zone (country) or whether Daylight Savings Time (DST) is operational.

Adjust the Time Zone / DST amount using the (UP) and (DOWN) buttons and OK to set.

Default Setting: GMT

4.5 Frequency

Set the Frequency as required.

Default Setting: 50Hz

4.6 LED Light

Turn on the white LED light for use as a torch, if required.

Default Setting: Off

4.7 Beep Sound

Turn Off / On the beep sound, note if Beep is turned off the audible low-battery warning will also be disabled.

Default Setting: On

4.8 Screen Saver

Turn on the Screen Saver function, shut down the screen after a period of inactivity, with options of 10 Seconds, 30 Seconds and 2 Minutes. Press any button to re-activate the display.

Default Setting: Off

4.9 TV Mode

Set the TV Mode as required.

Default Setting: PAL

4.10 Speed Stamp

Turn On / Off the Speed Stamp shown on recorded files.

Default Setting: On

4.11 Version

Display the version number of your device's software.

4.12 Default Setting

Reset the device to the default settings.

4.13 Auto Power Off

Adjust the timing of the Auto Power Off function, this can be used to continue recording in event of loss of power within in the vehicle, with options of 10 Seconds. 2 Minutes and 5 Minutes.

Default Setting: 10 Seconds

PC CONNECTION

Connecting the iN-CAR CAM to a Windows based PC using the supplied USB Cable will automatically trigger the iN-CAR CAM to display the two options of:

- Mass Storage
- PC Camera

Use the UP and DOWN buttons to select preferred option and OK to confirm.

Mass Storage

If Mass Storage is selected, the iN-CAR CAM screen will show the words 'Mass Storage' and then take the function of an SD Card reader for your PC. Upon your PC an extra drive will appear (e.g. Drive E:) and you will be able to navigate through the SD Card and view / manage stored files.

This feature is useful if you do not have an SD Card reader built in to your PC.

PC Camera

If PC Camera is selected, the iN-CAR CAM screen will show the words 'PC Camera' and then take the function of a webcam (no audio) for your PC. Start the normal application upon your PC that uses a webcam (e.g. Skype) and select the iN-CAR CAM which is entitled 'USB Video Device'.

This feature is useful if you do not have a Webcam built in to your PC.

MAC CONNECTION

Connecting the iN-CAR CAM to a MAC using the supplied USB Cable will automatically trigger the iN-CAR CAM to display the following options:

- Mass Storage
- PC Camera

Due to compatibility issues **ONLY** the Mass Storage function is available when used with MAC operating systems.

Mass Storage

Press OK to confirm Mass Storage function is required.

Once Mass Storage is selected, the iN-CAR CAM screen will show the words 'Mass Storage' and then take the function of an SD Card reader for your MAC. Upon your MAC the memory card within your iN-CAR CAM will appear on your desktop labelled 'NO NAME' and you will be able to navigate through the SD Card and view / manage stored files.

This feature is useful if you do not have an SD Card reader built in to your MAC.

VIDEO & AUDIO OUTPUT

The iN-CAR CAM has two methods for video and audio output:

High Definition Output

As you connect the supplied High Definition cable between the iN-CAR CAM and your television, the iN-CAR CAM screen will blank, as all output is now visible upon your television. The external monitor can now be used for playback and as a larger viewfinder in Photo mode. Recordings can NOT be made in Video mode with the HD cable connected.

The controls upon the iN-CAR CAM operate for the Play / Pause, STOP, Next / Previous and Fwd / Rev functions as shown on screen.

Standard Definition Output

As you connect an AV Cable (sold separately) between the iN-CAR CAM and your television, the iN-CAR CAM screen will blank, as all output is now visible upon your television. All elements of the Video, Photo and Playback are available via the AV output so you can monitor your recordings upon a larger screen instantly (useful for when using your iN-CAR CAM as a rear facing camera while connected to another device for viewing).

The controls upon the iN-CAR CAM operate normally.

Please contact your local NEXTBASE dealer for accessory purchases.

Note:

- An external power supply may be required when viewing recordings via the AV or HD output of the iN-CAR CAM, e.g. using the supplied USB cable with a 5Vdc/USB adaptor, of the type typically supplied with mobile phones.
- ENSURE that any external power sources are of the correct 5Vdc output, otherwise damage will be caused that is not covered under the manufacturers warranty.

DRIVING RECORDER PLAYER FOR WINDOWS

This section will guide you through the installation of the Driving Recorder Player software, designed to enable the viewing of recorded files as well as checking journey route / GPS data (location and speed) and G Sensor information.

MINIMUM SYSTEM REQUIREMENTS:

Operating System: Windows XP, Vista, Windows 7, Windows 8

Processor (CPU): Pentium III 500 MHz or Celeron at 800 MHz

Memory: 1 GB RAM

Storage: 100Mb Internal hard drive space

CD-ROM Drive: Tray / Slot Loader

Monitor/Display: 1280 x 1024

Windows Driving Recorder Player:



Insert the supplied Driving Recorder Player disk in to the CD drive, navigate and display the contents upon the disk:

- NBDVR402G Instruction Manual
Multiple Languages available
- NBDVR402G Driving Recorder Player for Windows
- NBDVR402G Driving Recorder Player for Mac

Note:

The instruction manual, installation guide and installation files are all available for download from the Nextbase website: www.nextbase.co.uk, if required.

Should you experience any difficulties during installation please do not hesitate to call our English speaking technical support team on +44 (0)2920 866429, lines are open during normal business operating hours: 09:00-17:30hrs.

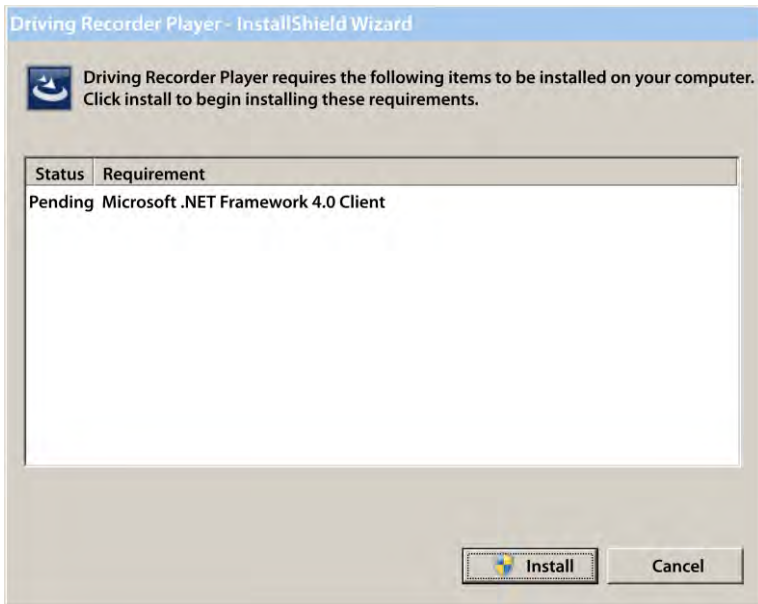
DRIVING RECORDER PLAYER FOR WINDOWS (CONTD.)**INSTALLATION:**

Open the 'NBDVR402G Driving Recorder Player for Windows' folder and then open the folder with required version based upon your preferred speed units (MPH or KMH).

Run the 'setup.exe', for some operating systems a security warning may appear, click 'RUN' to proceed.

To install this application software you need to have 'Microsoft.NET Framework 4.0 Client' installed upon your PC. Should this not already be installed, a window will open prompting you to confirm the automatic installation from Microsoft, as shown below.

This is normal and enables the Driving Recorder Player software to run.



Please press 'Install' to proceed, this installation process can take some time. After installation of 'Microsoft.NET Framework 4.0 Client', you may be asked to reboot your PC in order to continue the Driving Player Recorder software installation.

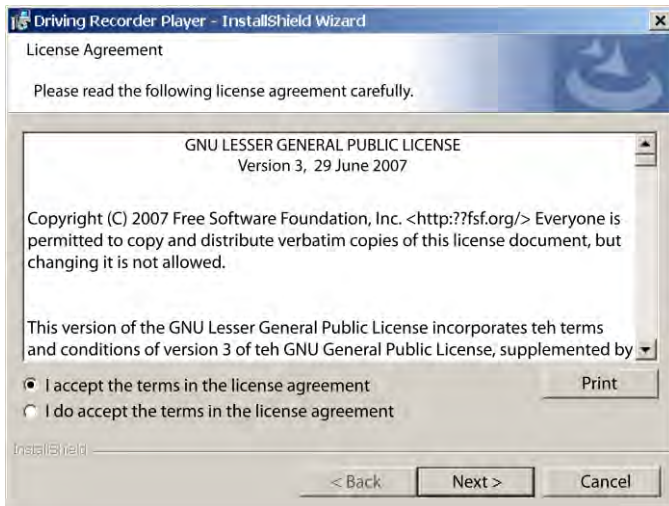
On completion of the Microsoft.NET Framework installation, the Driving Recorder Player installation will begin.

DRIVING RECORDER PLAYER FOR WINDOWS (CONTD.)

If your PC already had 'Microsoft.NET Framework 4.0 Client' installed then the 'Welcome to the InstallShield' window will open, as shown below.



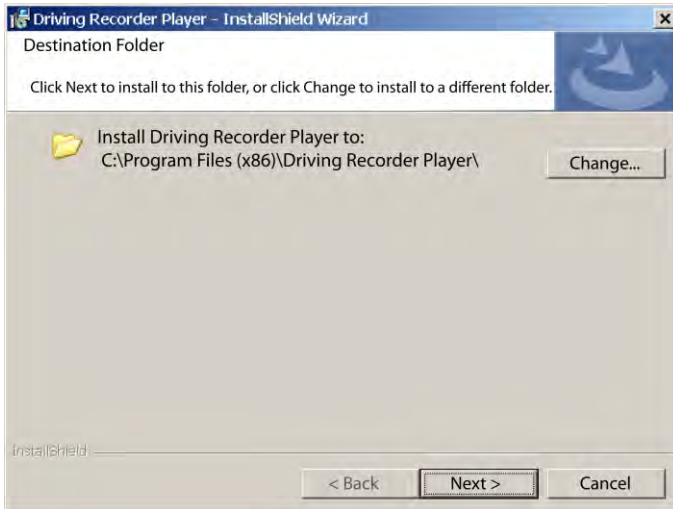
Press 'Next' to continue, the 'License Agreement' window will open, as shown below.



Check the 'Accept' button and press 'Next' to proceed.

DRIVING RECORDER PLAYER FOR WINDOWS (CONTD.)

The 'Destination Folder' window will open, as shown below.



Choose a destination folder should you not want files saved to the default folder within the Program Files directory.

Press 'Next' to proceed, the 'Ready to Install the Program' window will open, as shown below.



Click 'Install' to begin the installation.

DRIVING RECORDER PLAYER FOR WINDOWS (CONTD.)

The 'Installing Driving Recorder Player' window will open. During installation the status window will be on screen, as shown below.



Once installation is complete the 'InstallShield Wizard Completed' window will open, as shown below.



Installation now is complete, press 'Finish' to close the InstallShield Wizard window.

The Driving Recorder Player icon will now be available on your desktop.

Note:

- For some operating systems additional / different steps may be required.
- Some anti-virus software may consider the installation of this software as a threat, this is normal and not a cause for concern, please toggle off the anti-virus software, or choose to allow the installation to continue.

DRIVING RECORDER PLAYER FOR WINDOWS (CONTD.)

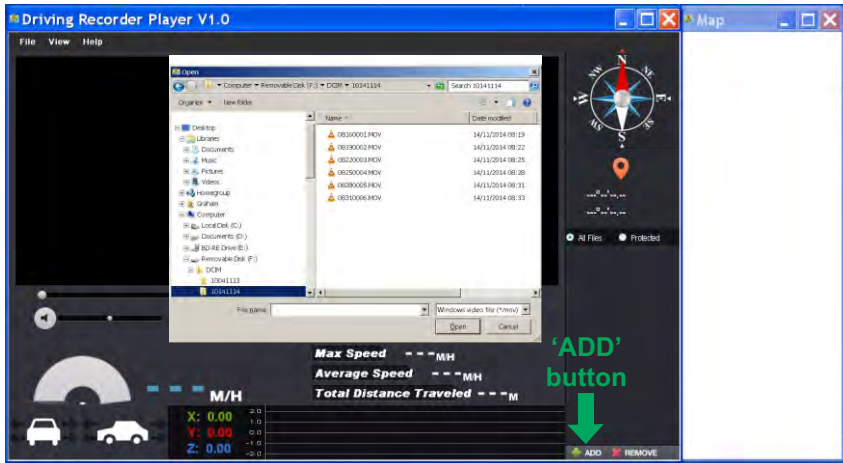
USING THE DRIVING RECORDER PLAYER:

Connect the iN-CAR CAM to your PC using the supplied USB cable and select Mass Storage by pressing 'OK' on your iN-CAR CAM.

Alternatively remove the MicroSD Card from your iN-CAR CAM and using a suitable MicroSD adaptor insert it directly to the card reader on your PC.

Close any pop up messages and/or any media players which may automatically open when video or photo files stored upon a memory card are detected. Open the Driving Recorder Player software using the shortcut on your desktop.

To add videos for viewing with the Driving Recorder Player click on the '+ ADD' button located in the bottom right hand corner of the main Driving Recorder Player window, this will open a new window allowing you to locate the required video files, see image below.



Once you have located and highlighted the required folder, for example:

Removable Disk (F:) - DCIM - 10141114, then highlight the required video clip recordings and click 'Open', this will add the selected files to the Driving Recorder Player file list.

It is the same principal whether connecting the DVR via the USB cable (see Mass Storage page 19) or by placing the memory card directly into your PC's card reader.

The only difference being is that the memory card would be shown as: SD (D:) within the directory list.

Playback:

Click on a file within the file list window to start playback, during playback use the player controls to: pause/play, forward, reverse as required.

Note:

- Playback via the USB Cable may result in playback jumping / freezing due to the transfer rate of data, it is recommended that the files are viewed directly from your PC's card reader - if you do not have a card reader available, please copy files from the iN-CAR CAM to your PC and use these for playback.

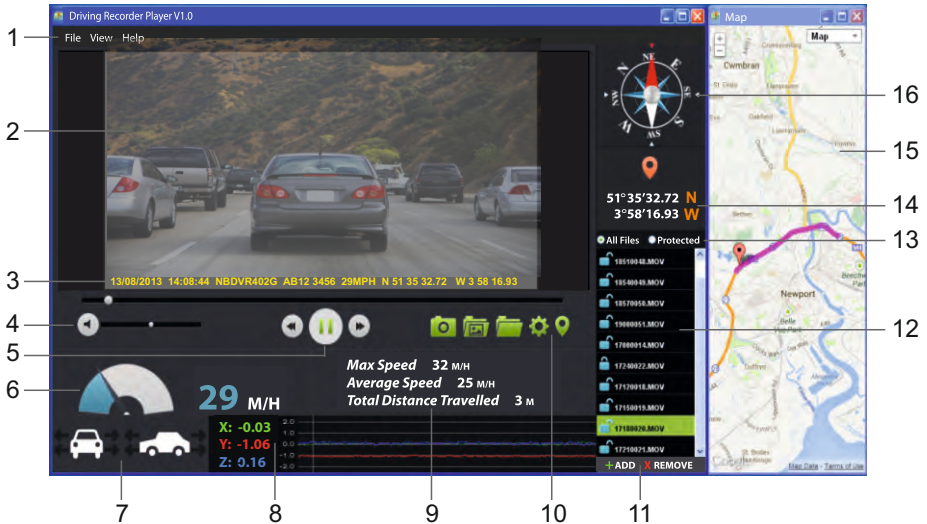
- Early Windows operating systems may require installation of video codec software to enable video playback.

Please visit <http://www.nextbase.co.uk> to download the 'PC Codec Pack (PC version)', installation instructions are also available within the downloaded file.

DRIVING RECORDER PLAYER FOR WINDOWS (CONTD.)

FEATURES & CONTROLS

The key below explains the various information displayed within the Driving Recorder Player when using a Windows platform.



1. Player settings

File: Browse for files, change settings for units of speed and language.
 View: Open / close map window.
 Help: Player version information.

2. Playback window of selected video file

View current video, to make full screen double-click on the top of the window.

3. Date / Time / Model / Vehicle Registration / Speed / GPS Co-ordinates Stamp

Data saved to the recorded file, this content will vary depending iN-CAR CAM settings and availability of GPS signal during recording.

4. Volume

Adjust playback volume.

5. Video playback control buttons

Play / Pause, fast forward and rewind current file, this function is not available on Windows XP.

6. Speed display

Displays current speed.

7. G Force display

Displays direction of G Force on the vehicle.






8. G Sensor data

Displays data recorded by the G Sensor across the three axis.
 X = left/right, Y = up/down and Z = acceleration & deceleration.

9. Journey statistics

Displays maximum speed, average speed and total distance travelled.

DRIVING RECORDER PLAYER FOR WINDOWS (CONTD.)**10. Driving Recorder Player controls**

-  Screen Capture, this will create a still image for each frame of the image seen within the playback window.
-  Open screen capture folder.
-  Browse for files stored on your computer.
-  Open settings window, adjust language and unit of speed.
-  Open / Close the Map window.

11. Add / Remove files

Used to add and remove selected videos to the file list.

12. File list

Displays videos currently within the file list.

13. Display all or protected files

Select whether to display all files or protected files only.

14. GPS co-ordinates

Displays current GPS co-ordinates, only available when the video files are recorded when a satellite connection was present.

15. Map

Displays route travelled on map, only available when the video was recorded when a satellite connection was present.

16. Compass

Displays current direction, only available when the video was recorded when a satellite connection was present.

Note:

- The driving recorder player will only open when an internet connection is available, due to the Google Map function within Windows, should you want to view recorded files please open with another video playback program, e.g. QuickTime or VLC.
- Functions and operation of the driving Recorder Player may vary dependant on your PC's operating system.
- GPS data will only be displayed when a GPS signal was present during the recording.

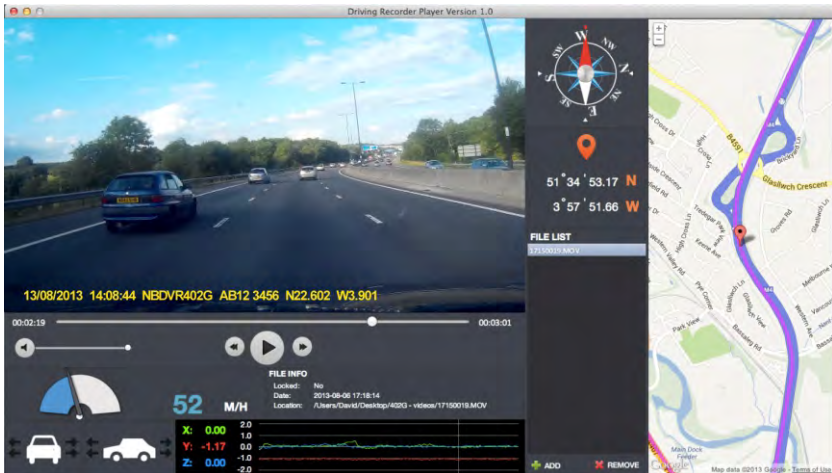
DRIVING RECORDER PLAYER FOR MAC

This section will guide you through the installation of the Driving Recorder Player software, designed to enable the viewing of recorded files as well as checking journey route / GPS data (location and speed) and G Sensor information.

MINIMUM SYSTEM REQUIREMENTS:

OS X 10.7 and above

Mac Driving Recorder Player:



Insert the supplied Driving Recorder Player disk in to the CD drive, navigate and display the contents upon the disk:

- NBDVR402G Instruction Manual
Multiple Languages available
- NBDVR402G Driving Recorder Player for Windows
- NBDVR402G Driving Recorder Player for Mac

Note:

The instruction manual and installation files are all available for download from the Nextbase website: www.nextbase.co.uk, if required.

Should you experience any difficulties during installation please do not hesitate to call our English speaking technical support team on +44 (0)2920 866429, lines are open during normal business operating hours: 09:00-17:30hrs.

DRIVING RECORDER PLAYER FOR MAC (CONTD.)

INSTALLATION

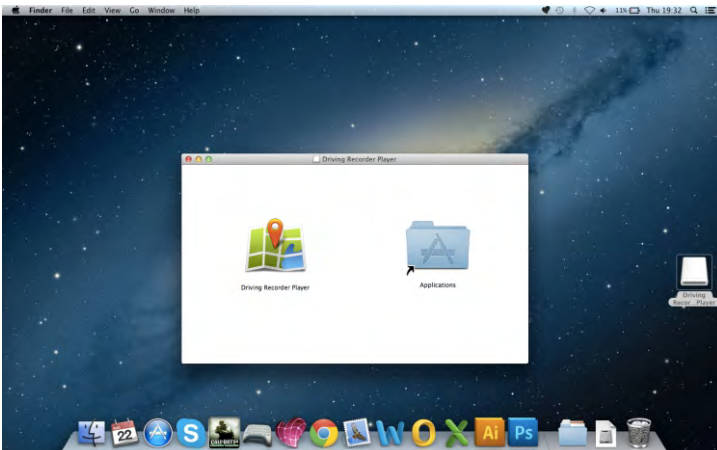
Open the 'NBDVR402G Driving Recorder Player for Mac' folder and then open the folder with required version based upon your preferred speed units (MPH or KMH).

Run the 'Driving Recorder Player for MAC' .dmg file, this will place the 'Driving Recorder Player' volume on your desktop, as shown below.



Alternatively, once the required Driving Recorder Player software has been downloaded from the Nextbase website open the 'Downloads' folder on your Mac. The software is saved in a compressed (.zip) folder, free de-compression applications are readily available, for example 'The Unarchiver' available from the Mac Appstore. Once the .zip folder has been uncompressed the full folder will appear in your downloads folder. Open the folder and run the 'Driving Recorder Player for MAC' .dmg file.

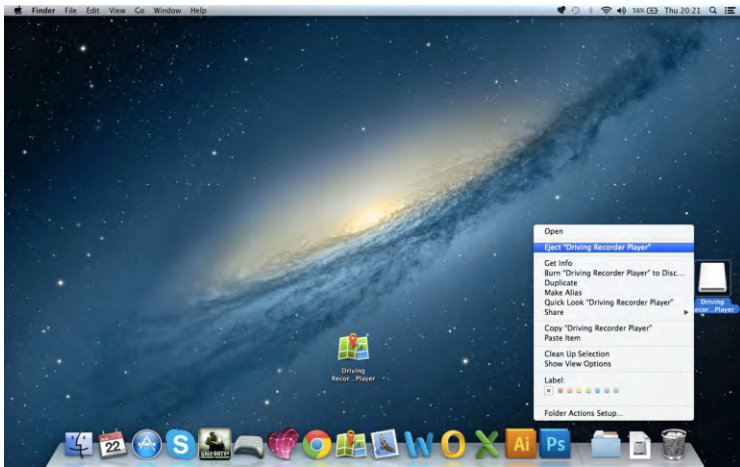
Open the volume on your desktop by either double-clicking or right-click, select open and right click once more. This will open the volume window, as shown below.



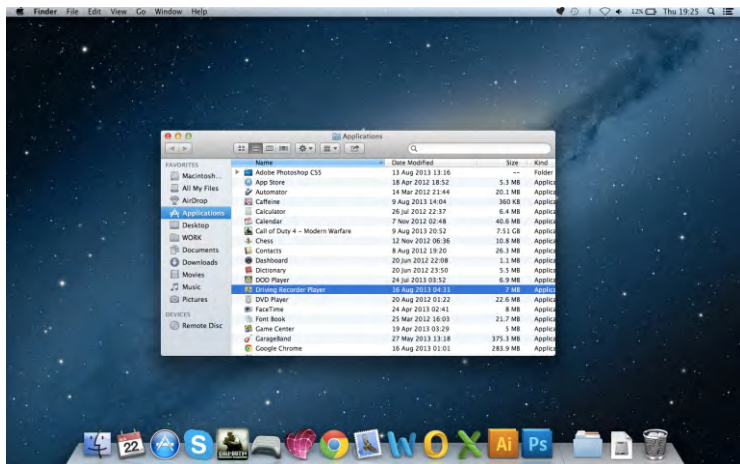
Drag the Driving Recorder Player into the Applications folder, a sound will be heard to confirm application has been installed.

DRIVING RECORDER PLAYER FOR MAC (CONTD.)

The Driving Recorder Player 'volume' can now be ejected, right-click, select Eject 'Driving Recorder Player' and right-click once more, see image below.



The 'Driving Recorder Player' can also be found within the Applications List, see below.



At this point may also want to drag a copy onto your desktop, this can then be used as a desktop shortcut or placed on your Dock.

DRIVING RECORDER PLAYER FOR MAC (CONTD.)

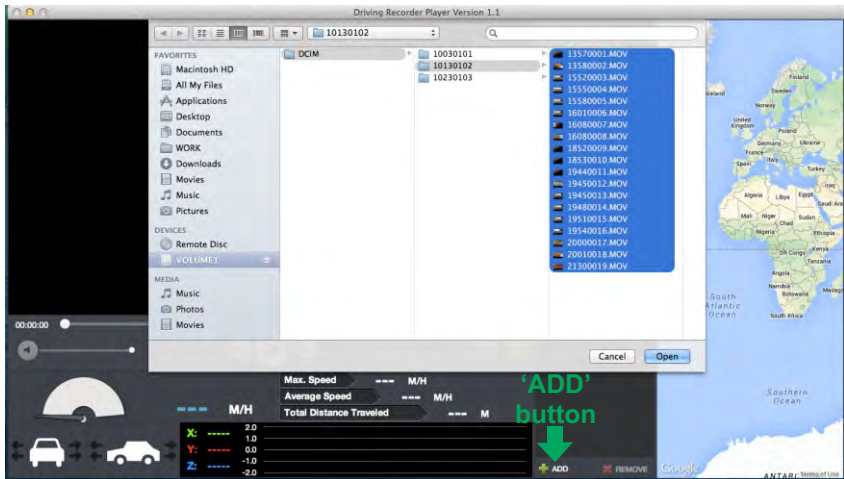
USING THE DRIVING RECORDER PLAYER:

Connect the iN-CAR CAM to your Mac using the supplied USB cable and select Mass Storage by pressing 'OK' on your iN-CAR CAM.

Alternatively remove the MicroSD Card from your iN-CAR CAM and using a suitable MicroSD adaptor insert it directly to the card reader on your mac.

Close any pop up messages and/or any media players which may automatically open when video or photo files stored upon a memory card are detected. Open the Driving Recorder Player software using the shortcut on your desktop.

To add videos for viewing with the Driving Recorder Player click on the '+ ADD' button located in the bottom right hand corner of the main Driving Recorder Player window, this will open a new window allowing you to locate the required video files, see image below.



Once you have located and highlighted the required folder, for example:

VOLUME1 - DCIM - 10130102, then highlight the required video clip recordings and click 'Open', this will add the selected files to the Driving Recorder Player file list.

It is the same principal whether connecting the DVR via the USB cable (see Mass Storage page 19) or by placing the memory card (using a suitable MicroSd adaptor) directly into your Mac's card reader.

Playback:

Click on a file within the file list window to start playback, during playback use the player controls to: pause/play, forward, reverse as required.

Note:

- Playback via the USB Cable may result in playback jumping / freezing due to the transfer rate of data, it is recommended that the files are viewed directly from your Mac's card reader - if you do not have a card reader available, please copy files from the iN-CAR CAM to your PC and use these for playback.

DRIVING RECORDER PLAYER FOR MAC (CONTD.)

FEATURES & CONTROLS

The key below explains the various information displayed within the Driving Recorder Player when using a MAC platform.



1. Playback window of selected video file

View current video.

2. Date / Time / Model / Vehicle Registration / Speed / GPS Co-ordinates Stamp

Data saved to the recorded file, this content will vary depending iN-CAR CAM settings and GPS signal.

3. Volume

Adjust playback volume.

4. Video playback control buttons

Play / Pause, fast forward and rewind current file.

5. Speed display

Displays current speed.

6. G Force display

Displays direction of G Force on the vehicle.

7. G Sensor data

Displays data recorded by the G Sensor across the three axis.
X = left/right, Y = up/down and Z = acceleration & deceleration.

8. File Info

Displays current file information.



9. Add / Remove files

Browse for files stored on your computer, add / remove selected videos to and from the file list.

DRIVING RECORDER PLAYER FOR MAC (CONTD.)



10. Screen Capture

-  Screen Capture, this will create a still image for each frame of image within the playback window.
-  Open screen capture folder to view images.

11. File List

Displays videos currently within the file list.

12. GPS co-ordinates

Displays current GPS co-ordinates, only available when the video files were recorded when satellite connection was present.

13. Map

Displays route travelled on map, only available when the video was recorded when a satellite connection was present.

14. Compass

Displays current direction, only available when the video was recorded when a satellite connection was present.

Note:

- The driving recorder player will only open display an active map when an internet connection is available.
- Functions and operation of the driving Recorder Player may vary dependant on your PC's operating system.
- GPS data will only be displayed when a GPS signal was present during the recording.

TROUBLE SHOOTING

PROBLEM	SOLUTION
Video Image is blurred.	Remove the protective lens cover, clean the lens, clean the windscreen!
I can not insert the Micro SD card.	Micro SD card are very small and require delicate use. Align the card with the diagram shown upon the device and insert the card until you feel a slight spring resistance. You now need to push the card, using your finger nail, until you hear and feel a small latch. Release pressure and the card will stay retained within the device. Use the edge of a small coin if you have difficulty.
I can not remove the Micro SD card.	With the card previously installed, you now need to push the card further inwards slightly, using your finger nail, until you hear and feel a small latch. Use the edge of a small coin if you have difficulty. Release pressure and the card will spring out sufficiently for you to take hold of it.
Video files can not be played.	The video files from the iN CAR CAM are in MOV format and may not be compatible with your PC if suitable playback software is not installed. Install the supplied Driver Recorder Player software and the additional Codecs if necessary.
Video file playback is jumpy.	Remove the SD card and reformat to remove non-contiguous files. For best recording use a branded class 10 type (30MB/s) SD card of 8 to 32GB recommended size. Recommended video playback software is the supplied Driver Recorder Player Playback. PC may not be sufficient for the playback task, try an different PC. Copy video files onto the PC / Mac for playback. It is not recommended to use the iN-CAR CAM as a card reader via the USB Cable for playback purposes.
Playback upon the Driver Recorder Player is jumpy.	The Codecs upon your PC may not be compatible or the latest standard. Download the latest Codecs from: http://www.nextbase.co.uk
The sound is not synchronised with video during playback.	The Codecs upon your PC may not be compatible or the latest standard. Download the latest Codecs from: http://www.nextbase.co.uk
Video has no sound.	Ensure that "Record Audio" setting is turned ON within the Video Menu.
Photograph is blurred.	Hold the camera still whilst taking the photo. Please be aware the photo is taken around 1 second after the shutter noise is heard.
I can only record a few minutes of video on my Micro SD card.	Change the recording size (Loop recording function) to a smaller size. Increase the size of the MicroSD card. Max 32GB.
Mass Storage or PC Camera function does not work.	The Mass storage function will work on both Windows and Mac, however the PC camera is only Windows compatible. Restart the PC, as this may be required for the necessary driver to be loaded correctly. Disconnect and reconnect the In-CAR CAM. Contact NEXTBASE for the required driver.
The sucker will not stay in place upon my windscreen.	Ensure that the protective cover (plastic film) has been removed from the suction pad. Moisten the sucker slightly before affixing upon the windscreen. Ensure that the lever is fully pushed towards the windscreen. Make sure that the glass is smooth and clean. Do not stick to glass that has any non-smooth effect or paint whatsoever. Affix to the glass firmly and then push the lever to the full extent.

TROUBLE SHOOTING (CONTD.)

PROBLEM	SOLUTION
My iN-CAR CAM shuts down by itself after a while.	Either the battery has gone flat, or there is no power to the iN-CAR CAM and the AutoPower Off period (which is in the SETUP menu) has been triggered.
No power to my iN-CAR CAM, but it works upon my PC.	The cigarette power cable is not working. Inspect the fuse in the Car Power plug. Replacement fuse = 2A 20mm type. If the fuse is found to be blown, inspect the power cable for damage which may have caused the fuse blow.
The SD card in my iN-CAR CAM can not be read.	Use a good quality branded SD card between 4GB and 32GB and format the card from within the SETUP menu of the iN-CAR CAM.
I can't delete files on my SD card within the iN-CAR CAM.	Check to see if these files are 'protected', if so please follow instructions to 'un-protect'.
The screen blanks after a few minutes upon my iN-CAR CAM.	The screen saver is set to ON. Change settings to OFF if required. Default setting is off.
I get the message "Cluster size wrong. Please format SD card" on screen.	The SD card has been formatted in another device and the Cluster Size is not compatible. Simply use the MENU, SETUP option to re-format the SD card from within the iN-CAR CAM.
The Driving Recorder Player will not open.	For Windows operating systems the player requires an internet connection to open, if this is not available please view files using alternative playback software, i.e. QuickTime or VLC.
The iN-CAR CAM can not lock onto satellite.	After power on and with the device mounted with clear view of the sky it can take up to 10 minutes to find the three satellites required to achieve a stable signal. Reception can also be affected by atmospheric conditions and the proximity of buildings / trees obscuring the sky.
The battery will not charge.	To protect from over-charging the battery will only charge when the iN-CAR CAM is turned on.
The battery only last 30 seconds.	The battery will only receive charge when the iN-CAR CAM is turned on, please reconnect car adaptor and leave the iN-CAR CAM turned on. Charging takes approximately 90 minutes and a full charge is indicated by a red LED.
The battery only lasts 6 minutes.	This is normal, the battery design allows the 'Auto Power Off' feature to function in event of power loss within the vehicle. It is not intended as an alternative power source to replace the supplied car adaptor.
I get the message "Card Error" on screen.	The SD card has become unuseable by the iN-CAR CAM. Remove useful files using your PC and then perform a "FORMAT" upon the SD card from within iN-CAR CAM the SETUP menu.
I get the message "Card Full" on screen.	The SD card has become full as the Loop recording function is set to OFF. Set the "Loop Recording" function to 3 mins (default) to enable the cycle recording function and automatic deletion of older files.
The AV Out from my iN-CAR CAM just buzzes on my TV.	Ensure that the AV cable is correct. Use a stereo 3.5mm jack plug where the tip is the video and the ring is the audio signal.

TROUBLE SHOOTING (CONTD.)

PROBLEM	SOLUTION
I have turned on 'motion detection' and now can't stop the recording.	The iN-CAR CAM will start a recording whenever motion is detected, when function is to be turned off firstly shutdown the iN-CAR CAM and remove the SD card, this will avoid recording being activated accidentally. Switch back on the and within the setting menu and turn off the 'Motion Detection'.
When I press the MENU button nothing happens.	This is normal during recording. Stop the recording before pressing the MENU button. If recording re-starts before you can press MENU, then see the Motion Detection section above.
Downloading files from www.nextbase.co.uk using Google Chrome results in a Malicious Software message.	This is not a cause for concern, simply go to the settings within Google Chrome and turn off the malicious software protection temporarily to download and install the software. Reinstate previous Google Chrome settings thereafter.
The date & time on my iN-CAR CAM do not adjust for Daylight Savings time.	Correct. Adjust the time manually within the SETUP menu.
Unresolved issues.	Reset the iN-CAR CAM to the default settings within the Setup Menu and try again. Should the problem persist call the helpline (02920) 866429 or email: support@nextbase.co.uk

NEXT BASE

www.nextbase.co.uk



NBDVR402G-IM-ENG-R06