



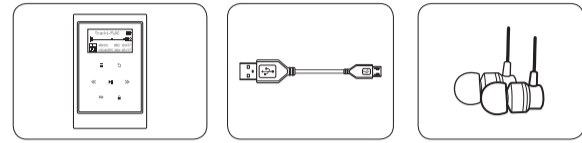
## Getting to know your portable mp3 player

Please read these instructions carefully. They contain important information which will help you get the best from your product and ensure safe and correct installation and operation.

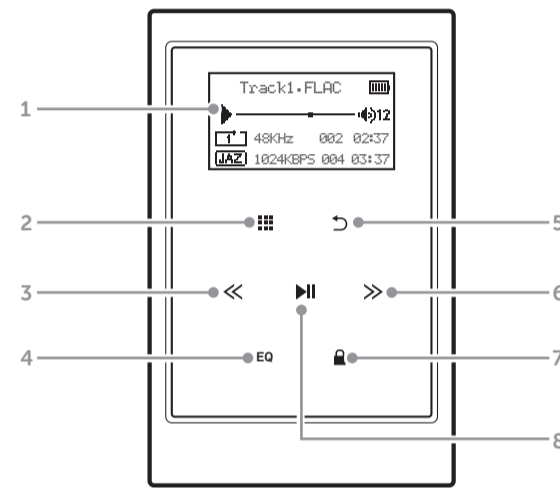
If you require any further assistance, our technical experts are happy to help. For full details, refer to the product support section at the end of these instructions.

### Accessories

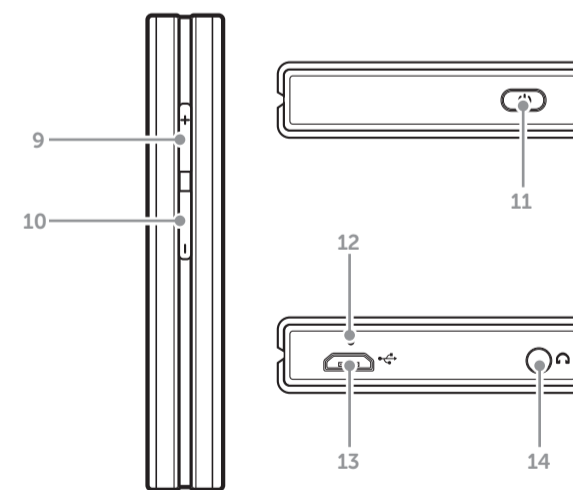
- 1282 CLASSIC player
- USB charging cable
- Earphones (with 2 extra sleeves)
- Instruction manual



### Functions and controls



- OLED display**
- MENU**: Press for function options
- SKIP BACKWARDS/SCROLL UP**: Press to skip to a previous track or to scroll upwards through menus.
- EQ**: Press to enter EQ selection menu.
- BACK**: Press to return to the previous screen.
- SKIP FORWARDS/SCROLL DOWN**: Press to skip to the next track or to scroll downwards through menus.
- KEYPAY LOCK**: Press to disable the keypad buttons being pressed.
- PLAY/PAUSE/SELECT**: Press for play and pause functions and select.



- VOLUME +**: Press to increase the volume output.
- VOLUME -**: Press to decrease the volume output.
- POWER**: Press to dim the display or press and hold to power off the player.
- RESET**: Press to reset the player.
- USB PORT**: Used for charging and file transfer.
- EARPHONE PORT**: Connect earphones with 3.5mm jack.

## Safety Information

**Important** - Please read these instructions fully before installing or operating

### Power source

- Opening or removing covers may expose you to dangerous voltages or other hazards.

- Use suitable power sources - Plug the product into a suitable power source, as described in the operating instructions or as marked on the product.

- The supply voltage should be the same as that indicated in the technical specifications and the appliance rating plate.

- Do not bend, stretch or pull the supply cable in order to avoid electric shock.

- Do not allow the product to be submerged in water. Do not expose headphone socket or battery compartment to water, as water entering the set may cause major damage.

### Moisture and water

- Do not use this apparatus near water or moisture.
- Do not use this product near a bathtub, washbowl, kitchen sink, and laundry tub, in a wet basement, near a swimming pool, or anywhere else that water or moisture is present.

### Heat sources and flames

- Batteries shall not be exposed to excessive heat such as sun, fire or the like.

### Servicing and repairs

- Refer all servicing to qualified service personnel
- Servicing is required when the apparatus has been damaged in any way: such as liquid has been spilled or objects have fallen into the apparatus; the apparatus has been exposed to rain or moisture, does not operate normally, or has been dropped.

## Getting started

You'll soon be enjoying your new Portable mp3 jukebox.

It all begins here, with your instructions. Don't worry, there's nothing too technical coming up. Just simple, step-by-step guidance to get you up and running quickly. Sound good? Then let's get started.

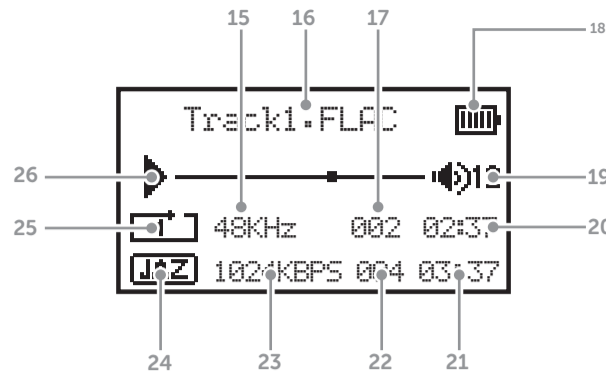
### Help and Guidance

We're here to help you get the most from your Portable mp3 jukebox. Should you require any guidance, a simple solution can often be found online at:

[www.argos-support.co.uk](http://www.argos-support.co.uk)

If you still require further assistance, call one of our experts on 0345 600 3021.

## Functions and controls continued



- FREQUENCY**: Displays the frequency of each audio track.
- TRACK NAME**: Displays the track name from the ID3 tag.
- TRACK NUMBER**: Displays the track number.
- BATTERY LEVEL**: Displays the charge level of the internal battery.
- VOLUME LEVEL**: Displays the volume level.
- TIMECODE**: Displays the timecode of the current track.
- TRACK LENGTH**: Displays the total length of the current track.
- TOTAL TRACKS IN FOLDER**: Displays the total number of tracks in the selected folder.
- BIT RATE**: Displays the bit rate of the current track.
- EQ MODE**: Displays the current EQ setting.
- PLAY MODE**: Displays the playback mode setting.
- PLAY/PAUSE**: Displays the PLAY or PAUSE icon depending on the status.

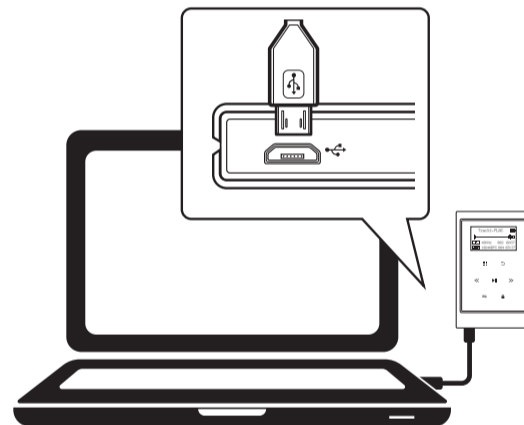
## Using your portable mp3 player

### Getting started

Follow the below steps to charge the player.

The player requires charging fully before use to ensure battery longevity.

- Take the supplied USB cable and connect the MICRO USB end into the charge socket on the bottom of the player.



- Connect the other end of the USB cable to a USB port on a PC/ laptop and power up.
- As the mp3 player receives power the loading screen will be displayed and the battery charge icon will slowly fill to indicate the charge level.
- After power up the mp3 player will connect to the PC/ laptop and a storage device will appear in the 'My Computer' drive list named '1282classic'.

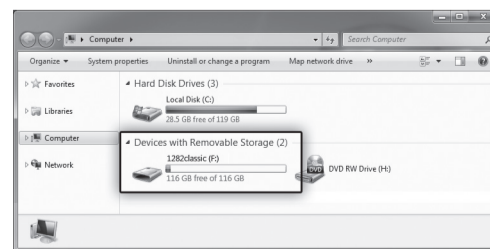
### Transferring music to the mp3 player

Follow the below steps to copy audio tracks from your PC or MAC to the internal memory of the mp3 player.

**WARNING:** Audio tracks with digital copy protection can ONLY be played back by the hardware/software they were purchased from and will not function on this device.

Audio tracks can be transferred during the charge process; but could result in a slightly longer charge process.

- Follow the steps in 'Getting Started' to connect to a PC/ laptop and load the internal storage device.



## Transferring music to the mp3 player continued

- Double click 'My Computer' Or 'Computer' on some operating systems. Look for 'Removable disks or storage' option and locate the device named '1282classic' and double click.

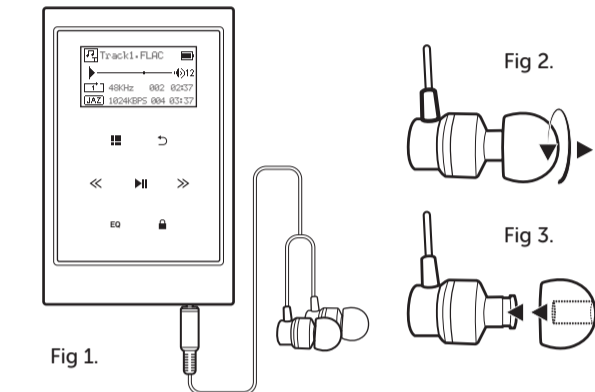
Do not disconnect the USB cable at any time when copying data to or from the device.

- Drag and drop media files into the removable device. You can create additional folders using the operating system installed on your PC/ laptop.
- Close the removable device window and disconnect the player from your pc/ laptop after data transfer has completed.

If you are charging the mp3 player while transferring files DO NOT disconnect the player until fully charged.

### Connecting earphones

- Insert the 3.5mm jack into the earphone socket on the bottom of the player marked with the symbol. (Fig 1)
- Ensure the jack is pushed in far enough to click into place.



- The earphones are supplied with small, medium and large sound isolating sleeves. Twist and pull to remove from each earphone. (Fig 2)
- Push each sleeve onto the earphone as shown (Fig 3). Ensure each sleeve is secure.

To prevent possible hearing damage, do not listen at high volume levels for long periods.

When the volume is adjusted to 85dB the above icon will appear on the display. Press the MENU button to continue.

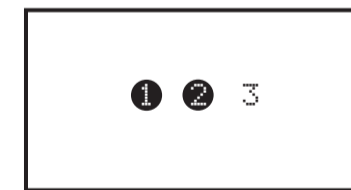
If you hear no sound during playback, do not turn the volume up as the music may suddenly begin at a high volume.

Excessive sound pressure from earphones and headphones can cause hearing loss.

To avoid damaging your ears, adjust the volume to the lowest safe level before playing, and turn up to the desired level when playback has started.

### Power On/ Off

- Press and hold the POWER button on top of the player until all three digits light up and the player powers off.



- To power the player on press and hold the POWER button for 2 seconds.

### Backlight dim

- Press the POWER button on top of the player when powered on to dim the backlight.
- Press once more to illuminate the backlight.

## Using your portable mp3 player

### Navigating the music library

Once the player is fully charged, and you have copied music to the device follow the below instructions to begin browsing your music.

After copying lots of files to the player, there may be a delay after disconnecting from a PC/ laptop while the software organises the files.

## Navigating the music library continued

- Navigate to the MUSIC option from the main menu using the <</> buttons. Pressing the play button will select a highlighted option. The back button will return to the previous menu.



- Use the <</> buttons to navigate the library options from: All Songs, Artists, Albums, Genres, Playlists and Update Playlists. Press the play button to select.

- All Songs**: Displays all tracks in an alpha numeric order.
- Artists**: Displays a list of folders named by Artist. When selected each album is presented as folders.
- Albums**: Displays all albums as folders in an alpha numeric order.
- Genres**: Displays a list of genres generated from the transferred files ID3 tags.
- Playlists**: Displays a list of playlists.
- Update playlists**: See 'Update playlist' section overleaf.

Artist, Album & Genre selection is intended for light users. Tracks will be sorted and selections available up to a maximum of 4000 in total.

Experienced users with larger music collections should use the 'File browser' from the main menu.

### File browser



As an alternative viewing option to the music library you can browse files as they are stored on the internal memory. So files in folders will be displayed in folders and files not in folders will be displayed as such.

The operational functions are the same as the music library.

### Playing music

- After highlighting a song to play, press the play button to begin playback or press the MENU button and select 'Play' from the list.
- After the song has played the next song in the alpha numeric list will play automatically, unless there is only one song found in the folder.
- To play an album/ folder; select the first track in the list and press the play button.

The default play mode is REPEAT ALL. When all tracks in an album/ folder have played, playback will repeat starting from track 01.

See 'Playback modes' for more information.

- During playback press the play button to pause the current track. Press again to resume.
- To return to the currently playing track at any time select the NOW PLAYING option from the main menu.



### Skipping tracks

- Use the << button to skip to the previous track.
- Use the >> button to skip to the next track.

### Fast searching tracks

- Press and hold the << button to fast rewind the current playing track. Release the button to resume normal playback.
- Press and hold the >> button to fast forward the current playing track. Release the button to resume normal playback.

## Using your portable mp3 player

### Volume control

- To adjust the volume levels press the **VOLUME +** or **-** buttons (on the side) to increase or decrease the level.



When the volume is adjusted to 85dB this icon will appear on the display to indicate a level that could cause damage to your hearing has been reached.

- Press the **':::'** button to continue.

### Key lock

To prevent buttons being pressed when the player is in a pocket or such like, you can activate the keylock function.

- Press the **lock** button to activate the lock. You will see an animated lock being closed.
- Press again to unlock. The animated lock will now open and the button functions will be available once more.

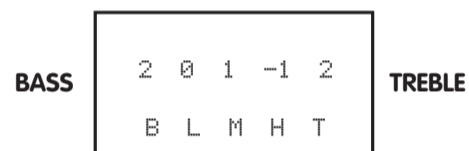
### EQ modes

- Press the **EQ** button to display a list of EQ settings.
- Use the **<</>>** buttons to scroll through the list. As you highlight each setting any currently playing audio will temporarily adopt the EQ setting to allow you to hear the difference.
- To select the EQ setting press the **▶** button. The setting will be stored and displayed on the **PLAY** screen.

Refer to **functions and controls** for a detailed description of the playback screen.

### Custom EQ setting

- Select the 'Custom' option at the bottom of the EQ list to program your own EQ setting. Once selected the below screen will be displayed.



- Use the **<</>>** buttons to increase or decrease the levels from -5 to +5. Press the **':::'** button to skip between the Bass-Mid-Treble settings.
- Press the **▶** button to store the setting for use.

To use this setting at any time, select the custom option from the EQ list.

### Playback modes

When playing multiple tracks for example an album, you can choose how the player deals with selecting the next track.

- Use the **<</>>** buttons to scroll through the options, and press the **▶** button to select.

	Play All	Plays all tracks in a folder in sequence and stops after the last track has played.
	Repeat 1	Plays the current track repeatedly.
	Repeat All	Plays all tracks in a folder in sequence and repeats after the last track has played.
	Shuffle	Plays all tracks in a folder in random order.

### Creating a playlist

Follow the below steps to program a playlist of tracks.

- You can easily add a playing track to a playlist by pressing the **':::'** button and selecting 'Add to Playlist'.



- Use the **<</>>** buttons to select a playlist (1-3) to add the track to. Press the **▶** button twice to add the track.
- To add a track or an album from the library simply highlight the track or album folder and repeat steps 1-2.

### Playing a playlist

- From the **MUSIC** menu select **PLAYLISTS**.
- Select a playlist 1-3; press the **':::'** button and then press the **▶** button to begin playback.

### Editing a playlist

- From the **MUSIC** menu select **PLAYLISTS**.
- Select a playlist 1-3 and press the **▶** button to view the tracks in the playlist.
- Highlight a song you wish to delete and press the **':::'** button.

Using the **<</>>** buttons select the 'REMOVE FROM PLAYLIST' option and press the **▶** button twice to delete the track.



- To remove all tracks from the selected playlist press the **':::'** button. Using the **<</>>** buttons select the 'CLEAR PLAYLIST' option and press the **▶** button twice to clear the selected playlist.

### Deleting tracks/ folders

- Navigate to the **BROWSER** option from the main menu using the **<</>>** buttons.



- Highlight a song or folder you wish to delete and press the **':::'** button.
- Using the **<</>>** buttons select the 'DELETE' option and press the **▶** button.
- Navigate to the **YES** option and press the **▶** button once more to delete.

### Update playlist

When deleting folders & songs that are included in a playlist. Occasionally the reference to the files may remain after deleting. If this situation occurs follow the steps below.

- From the **MUSIC** menu select **UPDATE PLAYLISTS**.
- The software will scan the file system and remove any orphaned links to deleted songs & albums.
- Press the **▶** button to return back to the **MUSIC** menu.

### Connecting a bluetooth device

When using the Bluetooth connection, you can listen to audio wirelessly from a Bluetooth audio device (For example an MP3 player) within 10 metres of the Micro System unit.

- Navigate to the **BLUETOOTH** option from the main menu using the **<</>>** buttons. Press the **▶** button to enter. (Fig 4)



Fig 4.

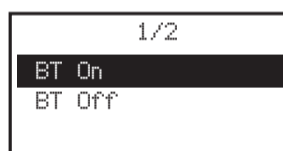


Fig 5.

- Highlight the **BT ON/OFF** option and press the **▶** button. Select **BT ON** and press the **▶** button once more. The words 'Bluetooth enabled' will appear to indicate bluetooth mode is now active. After a brief period the main Bluetooth menu will re-load. (Fig 5)
- You can now search for Bluetooth receiver devices such as a speaker. Select **SEARCH DEVICE** from the menu and press the **▶** button. A search operation will be performed to locate any compatible devices within range. (Fig 6)
- Select your device from the list and press the **▶** button twice to pair the devices.

If you turn off either device before pairing is complete the process will need to be repeated.

- When you have paired a device; you no longer need to search each time you wish to connect. You can simply navigate to the **DEVICE LIST** option; press the **▶** button and select the device from the list.



Fig 6.

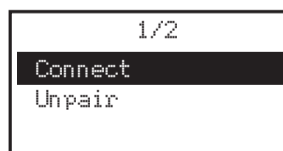
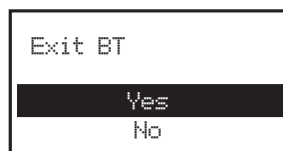


Fig 7.

- From here you can select **CONNECT** (to connect to the device) or **UNPAIR** (Remove the device from the list). You may need to press the **▶** button to return to the Bluetooth main menu. (Fig 7)

### Switching off bluetooth

- Press the **▶** button repeatedly until you see this screen.



- Select **YES** from the option menu and press the **▶** button to return to the main menu and disconnect any paired bluetooth devices.

The devices will remain in the **DEVICE LIST** for the next use.

### Playing music with bluetooth

- Select **ALL MUSIC** from the bluetooth menu.
- All songs and Albums are displayed in the same manner as the **BROWSER**. With files in folders displayed in folders and files not in folders displayed as such.
- Locate a song and press the **▶** button to begin playback. To play an album/ folder; select the first track in the list and press the **▶** button.

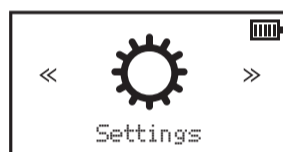
The default play mode is **REPEAT ALL** and cannot be changed. When all tracks in an album/ folder have played, playback will repeat starting from track 01. See 'Playback modes' for more information.

- During playback press the **▶** button to pause the current track. Press again to resume.
- Press the **▶** button to return to the bluetooth menu at any time.
- To return to the currently playing track select the **BT NOW PLAYING** option from the bluetooth main menu.

### Bluetooth EQ modes

Setting an EQ sound mode is identical to the operation described earlier in the 'EQ modes' section of this manual.

## System settings



Navigate to the **SETTINGS** option from the main menu using the **<</>>** buttons. Press the **▶** button to enter the menu.

### Sleep timer

Follow the below instructions to set a power off timer.

- Highlight **POWER SAVING** and press the **▶** button. Then press the **▶** button once more to enter the **SLEEP TIME** settings.
- The default setting is **OFF** (the unit will not shut down until you choose to). To set a shut down timer select **SLEEP TIME** and press the **▶** button.
- Use the **<</>>** buttons to select a time from 10-300 minutes. Press the **▶** button to store the setting.
- After the preset time has elapsed the player will shut down into standby mode.

### Idle timer

Follow the below instructions to set a timer that will shut down the player into standby mode when idle.

- Highlight **POWER SAVING** and press the **▶** button. Select **IDLE TIME** and then press the **▶** button once more to enter the settings.
- The default setting is **OFF** (meaning the player will not shut down when idle). To set an idle shut down timer select **IDLE TIME** and press the **▶** button.
- Use the **<</>>** buttons to select a time from 10-60 seconds. Press the **▶** button to store the setting.

### Backlight settings

Set a period when the backlight dims to save power.

- Highlight the **BACKLIGHT** setting and press the **▶** button to display the options.
- Use the **<</>>** buttons to select a time period (20s, 40s, 60s, 90s, 120s or **ALWAYS ON**) that the backlight will stay illuminated for and then dim. Selecting **ALWAYS ON** means the display backlight will not dim unless you press the **POWER** button on the top of the player.

## Information

### Firmware information

- Highlight the **INFORMATION** setting and press the **▶** button to display the information options.
- Select **FIRMWARE VERSION** and press the **▶** button to display the firmware revision information.

### Disk space

- Highlight the **INFORMATION** setting and press the **▶** button to display the information options.
- Select **DISK SPACE** and press the **▶** button to display the free & total space available on the internal memory.

### Factory default

To restore all settings to the defaults follow the below steps.

This operation only restores settings to their defaults and does not delete any files.

- Highlight the **FACTORY DEFAULT** setting and press the **▶** button.
- Select **YES** and press the **▶** button.

## Lossless audio information

To get the best quality sound reproduction, this portable mp3 player can store and play back CD quality uncompressed and compressed lossless audio files:

### Compressed

- APE 16bit 'fast' & 'normal'
- FLAC 16bit

### Uncompressed

- WAV 16bit
- WAV 24bit-48k translated to 16bit

To maximise storage capacity MP3 compresses files discarding sounds which a human ear can't audibly perceive.

The lower the bit rate, the more data is thrown away giving lower quality music, BUT Lossless audio compression however retains every single bit of detail from the original recording, whilst still reducing file sizes to give CD quality sounding music.

## Care and maintenance

### After use

- Power off the player.

### Care and cleaning

- All care and cleaning operations should be carried out with the unit unplugged from a PC/ laptop.
- Occasionally wipe the cabinet with a lint free duster. Never clean the unit with liquids or solvents.

## Technical specification

Specification	Rating
Dimensions	77 x 52 x 12mm
Weight	77g
Screen	1.3" OLED
Supported audio formats	MP3: Bitrate 8Kbps-320Kbps WMA: Bitrate 5Kbps-384Kbps FLAC: Sample rate 8KHz-48KHz, 16 bit APE: Sample rate 8KHz-48KHz, 16 bit WAV: Sample rate 8KHz-48KHz, 8-24 bit
Battery	1000mA lithium battery
Internal memory	128GB
Bluetooth	2.1 +EDR

## Product support

### Troubleshooting

Problem	Solution
No power	<ul style="list-style-type: none"><li>The player requires charging.</li></ul>
No sound	<ul style="list-style-type: none"><li>The volume level is too low.</li><li>No compatible audio files have been transferred to the player.</li><li>Earphones not connected.</li><li>Audio file is corrupt (try another file).</li></ul>
Sound is distorted	<ul style="list-style-type: none"><li>Lower the volume.</li><li>Check the EQ settings.</li></ul>
Bluetooth sound is interrupted	<ul style="list-style-type: none"><li>The player is too far away from the receiver device.</li><li>There is an obstacle in the path of the two devices.</li></ul>
The player has powered off	<ul style="list-style-type: none"><li>Press and hold the <b>POWER</b> button to wake the player. refer to the 'Sleep timer' section for more information.</li></ul>
A song/ Album/ Folder keeps repeating	<ul style="list-style-type: none"><li>Refer to the 'Playback modes' section for more information.</li></ul>
I cannot pair a bluetooth device	<ul style="list-style-type: none"><li>Check that another previously paired device is not connected already. Refer to 'Connecting a bluetooth device' section for more details on un-pairing a BT device.</li></ul>

### Disposal



- Disposal of your old product. Your product is designed and manufactured with high quality materials and components, which can be recycled and reused
- When this crossed out wheeled bin symbol is attached to a product it means the product is covered by the European Directive 2002/96/EC.
- Please make yourself aware of the local collection system for electrical and electronic products.
- Please act according to your local rules and do not dispose of your old products with your normal household waste.
- The correct disposal of your old product will help prevent potential negative consequences for the environment and human health.



The Bluetooth® word mark and logos are registered trademarks owned by Bluetooth SIG, Inc. and any use of such marks is under license.



This product is intended for use within the UK. This equipment complies with the essential requirements for the Radio Equipment and Telecommunications Terminal Equipment Directive RED 2014/53/EU.

### Declaration of Conformance

Hereby, Argos Ltd, declares that this Band II LPD device is in compliance with the essential requirements and other relevant provisions of Directive 1999/5/EC. The complete declaration of conformity can be obtained by contacting <http://www.argos-support.co.uk/>