

www.alcatelonetouch.com

For more information on how to use the phone, please go to www.alcatelonetouch.com and download the complete user manual. Moreover, on the website, you can also find answers to frequently asked questions, upgrade the software via Mobile Upgrade, and so much more.

ALCATEL
onetouch.

ALCATEL
onetouch.
Pixi3 (4.5)

4027X

4027D



ALCATEL
onetouch.

Note:

This is a shared user manual for 4027X/4027D specifying Dual SIM information where relevant.

Table of Contents

Safety and use	4
-----------------------------	----------

General information	13
----------------------------------	-----------

1 Your mobile	15
----------------------------	-----------

1.1 Keys and connectors.....	15
1.2 Getting started.....	18
1.3 Home screen.....	22
1.4 Applications and widgets.....	32

2 Text input	32
---------------------------	-----------

2.1 Using Onscreen Keyboard.....	32
2.2 Text editing.....	34

3 Phone call, Call log and Contacts	35
--	-----------

3.1 Phone.....	35
3.2 Viewing your call history.....	43
3.3 Speed dial settings.....	43
3.4 People.....	44

4 Messaging, Email	51
---------------------------------	-----------

4.1 Messaging.....	51
4.2 Gmail/Email.....	58
4.3 Hangouts.....	65

5 Calendar & Time	68
------------------------------------	-----------

5.1 Calendar.....	68
5.2 Time.....	70

6 Getting connected	72
----------------------------------	-----------

6.1 Connecting to the Internet.....	72
6.2 Browser.....	75
6.3 Connecting to Bluetooth devices.....	83

6.4 Connecting to a computer.....	85
6.5 Sharing your phone's mobile data connection.....	86
6.6 Connecting to virtual private networks.....	87

7 Google Play Store	89
----------------------------------	-----------

7.1 Locate the item you want to download and install.....	89
7.2 Download and install.....	90
7.3 Manage your downloads.....	92

8 Multimedia applications	94
--	-----------

8.1 Camera.....	94
8.2 Gallery.....	97
8.3 YouTube.....	100
8.4 Music.....	101
8.5 Video Player.....	102

9 Google Maps	103
----------------------------	------------

9.1 Get My Location.....	103
9.2 Search for a location.....	104
9.3 Star a location.....	105
9.4 Get driving, public transportation or walking directions.....	106
9.5 Arrangement of Layers.....	107

10 Others	108
------------------------	------------

10.1 Calculator.....	108
10.2 File Manager.....	109
10.3 Sound Recorder.....	110
10.4 Radio.....	110
10.5 Setup Wizard.....	111
10.6 Other applications.....	111

11 Settings	112
--------------------------	------------

11.1 Wireless & networks.....	112
11.2 Device.....	115
11.3 Personal.....	119
11.4 Accounts.....	125
11.5 System.....	125

12 Making the most of your phone	133
12.1 Smart Suite	133
12.2 Upgrade	134
13 Warranty	136
14 Accessories	138
15 Troubleshooting	139
16 Specifications	144



www.sar-tick.com

This product meets applicable national SAR limits of 2.0W/kg. The specific maximum SAR values can be found on page 8 of this user guide.

When carrying the product or using it while worn on your body, either use an approved accessory such as a holster or otherwise maintain a distance of 10 mm from the body to ensure compliance with RF exposure requirements. Note that the product may be transmitting even if you are not making a phone call.

Safety and use.....

We recommend that you read this chapter carefully before using your phone. The manufacturer disclaims any liability for damage, which may result as a consequence of improper use or use contrary to the instructions contained herein.

• TRAFFIC SAFETY:

Given that studies show that using a mobile phone while driving a vehicle constitutes a real risk, even when the hands-free kit is used (car kit, headset...), drivers are requested to refrain from using their mobile when the vehicle is not parked.

When driving, do not use your phone and headphone to listen to music or to the radio. Using a headphone can be dangerous and forbidden in some areas.

When switched on, your phone emits electromagnetic waves that can interfere with the vehicle's electronic systems such as ABS anti-lock brakes or airbags. To ensure that there is no problem:

- do not place your phone on top of the dashboard or within an airbag deployment area,
- check with your car dealer or the car manufacturer to make sure that the dashboard is adequately shielded from mobile phone RF energy.

• CONDITIONS OF USE:

You are advised to switch off the telephone from time to time to optimise its performance.

Switch the phone off before boarding an aircraft.

Switch the phone off when you are in health care facilities, except in designated areas. As with many other types of equipment now in regular use, mobile telephones can interfere with other electrical or electronic devices, or equipment using radio frequency.

Switch the phone off when you are near gas or flammable liquids. Strictly obey all signs and instructions posted in a fuel depot, petrol station, or chemical plant, or in any potentially explosive atmosphere.

When the phone is switched on, it should be kept at least 15 cm from any medical device such as a pacemaker, a hearing aid or insulin pump, etc. In particular when using the phone, you should hold it against the ear on the opposite side to the device, if any. To avoid hearing impairment, pick up the call before holding your phone to your ear. Also move the handset away from your ear while using the "hands-free" mode because the amplified volume might cause hearing damage.

Do not let children use the phone and/or play with the telephone and accessories without supervision.

When replacing the cover please note that your phone may contain substances that could create an allergic reaction.

Always handle your phone with care and keep it in a clean and dust-free place.
Do not allow your phone to be exposed to adverse weather or environmental conditions (moisture, humidity, rain, infiltration of liquids, dust, sea air, etc). The manufacturer's recommended operating temperature range is -10°C to +55°C. At over 55°C the legibility of the phone's display may be impaired, though this is temporary and not serious.
Emergency call numbers may not be reachable on all cellular networks. You should never rely only on your phone for emergency calls.
Do not open, dismantle or attempt to repair your mobile phone yourself.
Do not drop, throw or bend your mobile phone.
Do not use the phone if the glass made screen, is damaged, cracked or broken to avoid any injury.
Do not paint it.
Use only batteries, battery chargers, and accessories which are recommended by TCL Communication Ltd. and its affiliates and are compatible with your phone model. TCL Communication Ltd. and its affiliates disclaim any liability for damage caused by the use of other chargers or batteries.
Remember to make back-up copies or keep a written record of all important information stored in your phone.
Some people may suffer epileptic seizures or blackouts when exposed to flashing lights, or when playing video games. These seizures or blackouts may occur even if a person never had a previous seizure or blackout. If you have experienced seizures or blackouts, or if you have a family history of such occurrences, please consult your doctor before playing video games on your phone or enabling a flashing-lights feature on your phone. Parents should monitor their children's use of video games or other features that incorporate flashing lights on the phones. All persons should discontinue use and consult a doctor if any of the following symptoms occur: convulsion, eye or muscle twitching, loss of awareness, involuntary movements, or disorientation. To limit the likelihood of such symptoms, please take the following safety precautions:
- Do not play or use a flashing-lights feature if you are tired or need sleep.
- Take a minimum of a 15-minute break hourly.
- Play in a room in which all lights are on.
- Play at the farthest distance possible from the screen.
- If your hands, wrists, or arms become tired or sore while playing, stop and rest for several hours before playing again.
- If you continue to have sore hands, wrists, or arms during or after playing, stop the game and see a doctor.

When you play games on your phone, you may experience occasional discomfort in your hands, arms, shoulders, neck, or other parts of your body. Follow the instructions to avoid problems such as tendinitis, carpal tunnel syndrome, or other musculoskeletal disorders.



PROTECT YOUR HEARING

To prevent possible hearing damage, do not listen at high volume levels for long periods. Exercise caution when holding your device near your ear while the loudspeaker is in use.

• PRIVACY:

Please note that you must respect the laws and regulations in force in your jurisdiction or other jurisdiction(s) where you will use your mobile phone regarding taking photographs and recording sounds with your mobile telephone. Pursuant to such laws and regulations, it may be strictly forbidden to take photographs and/or to record the voices of other people or any of their personal attributes, and duplicate or distribute them, as this may be considered to be an invasion of privacy. It is the user's sole responsibility to ensure that prior authorisation be obtained, if necessary, in order to record private or confidential conversations or take a photograph of another person; the manufacturer, the seller or vendor of your mobile phone (including the operator) disclaim any liability which may result from the improper use of the mobile phone.

• BATTERY:

Observe the following precautions for battery use:

- Do not attempt to open the battery (due to the risk of toxic fumes and burns).
- Do not puncture, disassemble or cause a short-circuit in a battery.
- Do not burn or dispose of a used battery in household rubbish or store it at temperatures above 60°C.

Batteries must be disposed of in accordance with locally applicable environmental regulations. Only use the battery for the purpose for which it was designed. Never use damaged batteries or those not recommended by TCL Communication Ltd. and/or its affiliates.



This symbol on your telephone, the battery and the accessories means that these products must be taken to collection points at the end of their life:

- Municipal waste disposal centres with specific bins for these items of equipment
- Collection bins at points of sale.

They will then be recycled, preventing substances being disposed of in the environment, so that their components can be reused.

In European Union countries:

These collection points are accessible free of charge.

All products with this sign must be brought to these collection points.

In non European Union jurisdictions:

Items of equipment with this symbol are not to be thrown into ordinary bins if your jurisdiction or your region has suitable recycling and collection facilities; instead they are to be taken to collection points for them to be recycled.

CAUTION: RISK OF EXPLOSION IF BATTERY IS REPLACED BY AN INCORRECT TYPE. DISPOSE OF USED BATTERIES ACCORDING TO THE INSTRUCTIONS.

• **CHARGERS**

Mains powered chargers will operate within the temperature range of: 0°C to 40°C. The chargers designed for your mobile phone meet with the standard for safety of information technology equipment and office equipment use. They are also compliant to the ecodesign directive 2009/125/EC. Due to different applicable electrical specifications, a charger you purchased in one jurisdiction may not work in another jurisdiction. They should be used for this purpose only.

• **RADIO WAVES:**

Proof of compliance with international standards (ICNIRP) or with European Directive 1999/5/EC (R&TTE) is required of all mobile phone models before they can be put on the market. The protection of the health and safety for the user and any other person is an essential requirement of these standards or this directive.

THIS DEVICE MEETS INTERNATIONAL GUIDELINES FOR EXPOSURE TO RADIO WAVES

Your mobile device is a radio transmitter and receiver. It is designed not to exceed the limits for exposure to radio waves (radio frequency electromagnetic fields) recommended by international guidelines. The guidelines were developed by an independent scientific organisation (ICNIRP) and include a substantial safety margin designed to assure the safety of all persons, regardless of age and health.

The radio wave exposure guidelines use a unit of measurement known as the Specific Absorption Rate, or SAR. The SAR limit for mobile devices is 2 W/kg.

Tests for SAR are conducted using standard operating positions with the device transmitting at its highest certified power level in all tested frequency bands. The highest SAR values under the ICNIRP guidelines for this device model are:

4027X/4027D:

Maximum SAR for this model and conditions under which it was recorded.		
Head SAR	UMTS 900+Wi-Fi	0.661 W/kg
Body-worn SAR	GSM 900+Wi-Fi	1.038 W/kg

During use, the actual SAR values for this device are usually well below the values stated above. This is because, for purposes of system efficiency and to minimize interference on the network, the operating power of your mobile device is automatically decreased when full power is not needed for the call. The lower the power output of the device, the lower its SAR value.

Body-worn SAR testing has been carried out at a separation distance of 10 mm. To meet RF exposure guidelines during body-worn operation, the device should be positioned at least this distance away from the body.

If you are not using an approved accessory ensure that whatever product is used is free of any metal and that it positions the phone the indicated distance away from the body.

Organisations such as the World Health Organisation and the US Food and Drug Administration have stated that if people are concerned and want to reduce their exposure they could use a hands-free device to keep the phone away from the head and body during phone calls, or reduce the amount of time spent on the phone.

For more information you can go to www.alcatelonetouch.com

Additional information about electromagnetic fields and public health are available on the following site: <http://www.who.int/peh-emf>.

Your telephone is equipped with a built-in antenna. For optimal operation, you should avoid touching it or degrading it.

As mobile devices offer a range of functions, they can be used in positions other than against your ear. In such circumstances the device will be compliant with the guidelines when used with headset or usb data cable. If you are using another accessory ensure that whatever product is used is free of any metal and that it positions the phone at least 10 mm away from the body.

Please note by using the device some of your personal data may be shared with the main device. It is under your own responsibility to protect your own personal data, not to share with it with any unauthorised devices or third party devices connected to yours. For products with Wi-Fi features, only connect to trusted Wi-Fi networks. Also when using your product as a hotspot (where available), use network security. These precautions will help prevent unauthorised access to your device. Your product can store personal information in various locations including a SIM card, memory card, and built-in memory. Be sure to remove or clear all personal information before you recycle, return, or give away your product. Choose your apps and updates carefully, and install from trusted sources only. Some apps can impact your product's performance and/or have access to private information including account details, call data, location details and network resources.

Note that any data shared with TCL Communication Ltd. is stored in accordance with applicable data protection legislation. For these purposes TCL Communication Ltd. implements and maintains appropriate technical and organisation measures to protect all personal data, for example against unauthorised or unlawful processing and accidental loss or destruction of or damage to such personal data whereby the measures shall provide a level of security that is appropriate having regard to


- (i) the technical possibilities available,
- (ii) the costs for implementing the measures,
- (iii) the risks involved with the processing of the personal data, and
- (iv) the sensitivity of the personal data processed.

You can access, review and edit your personal information at any time by logging into your user account, visiting your user profile or by contacting us directly. Should you require us to edit or delete your personal data, we may ask you to provide us with evidence of your identity before we can act on your request.

• Regulatory information

The following approvals and notices apply in specific regions as noted.

4027X:



TCT Mobile Europe SAS
55 Avenue des Champs Piateux
Immeuble La Capitale 92000 Nanterre, France
+33 1 48 52 81 20

EC declaration of conformity / Déclaration de conformité CE

Product / Produit: HSDPAHS/PDAUMTS dual band GSM quad band handheld station with Bluetooth technology, Wi-Fi, FM radio / Portail HSDPAHS/PDAUMTS bicoeur / GSM quadband avec technologie Bluetooth, Wi-Fi, radio FM
 Product identification / Identification du produit: 4027X type Pui 3-4-5

We / Nous: TCT Mobile Europe SAS
55, avenue des Champs Piateux
92000 Nanterre
France

Declare under our sole responsibility that the product above mentioned is conform to the applicable essential requirements of the directive 1999/5/EC and that all essential radio test suites have been carried out. Conformity assessment procedure : annexe IV of the directive. / Déclare sous notre seule responsabilité que le produit ci-dessus est en conformité avec les exigences essentielles applicables de la directive 1999/5/CE et que toutes les séries d'essais radio essentielles ont été effectuées. Procédure d'évaluation de conformité: annexe IV de la directive.

Applied standards / Normes appliquées

- Item 3.1.a (protection of the health and of the safety of the user) / Article 3.1.a (protection de la santé et de la sécurité de l'utilisateur)
 - EN 60950-1:2006 + A11:2009 + A1:2010 + A12:2011 + A2 :2013
 - EN 50 360 :2001 + A1:2012, EN 50 586: 2013, EN 62479:2010
- Item 3.1.b (protection requirements with respect to electromagnetic compatibility) / Article 3.1.b (exigences de protection en ce qui concerne la compatibilité électromagnétique)
 - EN 301 488-1 V1.9.2 (2011-09), EN 301 488-3 V1.6.1 (2013-08), EN 301 489-7 V1.3.1 (2005-11), EN 301 489-17 V2.2.1 (2012-06), EN 301 489-24 V1.5.1 (2010-10), EN 55013:2013, EN 55020:2007 + A11:2011
- Item 3.2 (effective use of spectrum so as to avoid harmful interferences) / Article 3.2 (utilisation efficace du spectre radioélectrique de façon à éviter les interférences dommageables)
 - EN 301 511 V9.0.2 (2009-03), EN 301 908-1 V6.2.1 (2013-04), EN 301 908-2 V8.2.1 (2013-10), EN 300 328 V1.8.1 (2012-06), EN 300 440-1 V1.6.1 (2010-08), EN 300 440-2 V1.4.1 (2010-08)

This product also conforms to the applicable requirements of following directives. / Ce produit est en conformité avec la directive,

- directive 2011/65/EU (RoHS - restriction of the use of certain hazardous substances)


This product can connect with a Common Mobile Phone Charger which complies with below standards: (Ce produit peut être utilisé avec un chargeur universel pour téléphone portable conforme aux standards suivants.)


- EN301 489-34 v1.4.1 (2013-05)
- EN 62084:2010

The chargers delivered with this product (When included into the box) also conform to the applicable requirements of the directive 2009/125/EC(Energy Related Products) / Les chargeurs livrés (le cas échéant) avec ce produit sont en conformité avec la directive 2009/125/CE(écoconception des produits)

Conformity of this product with the essential requirements of the RATTÉ Directive 1999/5/EC has been reviewed by the following Notified Body. / La conformité de ce produit a été vérifiée par l'organisme de certification (notifi body) suivant:

American Certification Body, Inc.
 Suite C110, Whittier Avenue #731, 22101 McLean, Virginia, United States
 Identification number: 1559

Date: 2015-04-12
 Signature:  **Christophe Benoit**
 TCT Mobile Europe SARL / Deputy General Manager, EMEA



TCT Mobile Europe SARL
Immeuble La Capitale
92000 Nanterre, France

TCT Mobile Europe SAS - Siège social : 55 Avenue des Champs Piateux, Immeuble La Capitale 92000 Nanterre France
 SAS au capital de 23 031 072 euros - RCS Nanterre B 440 038 222 - Siret 440 038 222 000 38 APN 48032

TCT Mobile

TCT Mobile Europe SAS
55 Avenue des Champs Parnasse,
Immeuble Le Capitole 92000 Nanterre, France
+33 1 48 52 01 00

EC declaration of conformity / Déclaration de conformité CE

Product / Produit: HSDPA/HSPA/UMTS dual band / GSM quad band handheld station with Bluetooth technology, WPA, FM radio / Produit HSDPA/HSPA/UMTS dualband / GSM quadband avec technologie Bluetooth, WPA, radio FM

Product identification / Identification du produit: 4027D Type Pxl 3-4.5

We / Nous: TCT Mobile Europe SAS
55, avenue des Champs Parnax
92000 Nanterre
France

Declare under our sole responsibility that the product above mentioned is conform to the applicable essential requirements of the directive 1999/5/CE and that all essential radio test suites have been carried out. Conformity assessment procedure : annexe IV of the directive. / Déclarons sous notre entière responsabilité que le produit ci-dessus est en conformité avec les exigences essentielles applicables de la directive 1999/5/CE et que toutes les séries d'essais radio essentielles ont été effectuées. Procédure d'évaluation de conformité : annexe IV de la directive.

Applied standards / Normes applicables:

- Item 2.1.a (protection of the health and of the safety of the user) / Article 3.1.a (protection de la santé et de la sécurité de l'utilisateur)
 - EN 60950-1:2006 + A1:2009 + A1:2010 + A1:2011 + A2:2013
 - EN 50 300:2001 + A1:2012, EN 50 566: 2013, EN 62479:2010
- Item 3.1.a (protection requirements with respect to electromagnetic compatibility) / Article 3.1.b (exigences de protection en ce qui concerne la compatibilité électromagnétique)
 - EN 301 489-1 V1.3.2 (2011-09), EN 301 489-3 V1.5.1 (2013-09), EN 301 489-7 V1.3.1 (2005-11), EN 301 489-17 V2.2.1 (2012-09), EN 301 489-24 V1.5.1 (2015-10), EN 55013:2013, EN 55022:2007 + A1:2011
- Item 3.2 (effective use of spectrum so as to avoid harmful interferences) / Article 3.2 (utilisation efficace du spectre radioélectrique de façon à éviter les interférences dommageables)
 - EN 301 511 V9.0.2 (2003-03), EN 301 906-1 V6.2.1 (2013-04), EN 301 906-2 V6.2.1 (2013-10), EN 300 328 V1.8.1 (2012-09), EN 300 440-1 V1.6.1 (2010-09), EN 300 440-2 V1.4.1 (2010-09)

This product also conforms to the applicable requirements of following directives. / Ce produit est en conformité avec la directive.

- directive 2011/65/EU (RoHS - restriction of the use of certain hazardous substances)


This product can connect with a Common Mobile Phone Charger which complies with below standards. (Ce produit peut être utilisé avec un chargeur universel pour téléphone portable conforme aux standards suivants)

- EN201 489-34 v1.4.1 (2013-05)
- EN 60334:2010

The chargers delivered with this product (When included into the box) also conform to the applicable requirements of the directive 2009/126/EC(Energy Related Product) / Les chargeurs livrés (le cas échéant) avec ce produit sont en conformité avec la directive 2009/126/EC(écoconception des produits)

Conformity of this product with the essential requirements of the RATTÉ Directive 1999/5/CE has been reviewed by the following Notified Body. / La conformité de ce produit a été vérifiée par l'organisme de certification (notifi body) suivant:

American Certification Body, Inc.
Suite C110, Whitener Avenue 6731, 22101 McLean, Virginia, United States
Identification number: 1598

Date: 2015-04-12
Signature:  Christophe Benoit
TCT Mobile Europe SAS / Deputy General Manager, EMEA.

CE 1588

TCT Mobile Europe SAS
55 Avenue des Champs Parnasse
Immeuble Le Capitole
92000 Nanterre
France
+33 1 48 52 01 00

TCT Mobile Europe SAS - Siège social - 55 Avenue des Champs Parnasse, Immeuble Le Capitole 92000 Nanterre France
SAS au capital de 23 511 072 euros - RCS Nanterre B 440 038 322 - Siret 440 038 322 900 18 APF 46032

• LICENCE



microSD Logo is a trademark.



The Bluetooth word mark and logos are owned by the Bluetooth SIG, Inc. and any use of such marks by TCL Communication Ltd. and its affiliates is under license. Other trademarks and trade names are those of their respective owners.



SwiftKey is a registered trademark of TouchType Ltd.

ALCATEL ONETOUCH 4027X/4027D Bluetooth Declaration ID D023681



The Wi-Fi Logo is a certification mark of the Wi-Fi Alliance.

Google, the Google logo, Android, the Android logo, Google Search™, Google Maps™, Gmail™, YouTube, Google Play Store, Google Latitude™ and Hangouts™ are trademarks of Google Inc.

The Android robot is reproduced or modified from work created and shared by Google and used according to terms described in the Creative Commons 3.0 Attribution License (the text will show when you touch and hold **Google legal in Settings>About phoneLegal information**).⁽¹⁾

You have purchased a product which uses the open source (<http://opensource.org/>) programme mtd, msdosfs, netfilter/iptables and inrtid in object code and other open source programmes licensed under the GNU General Public License and Apache License.

We will provide you with a complete copy of the corresponding source codes upon request within a period of three years from the distribution of the product by TCL Communication.

You may download the source codes from <http://sourceforge.net/projects/alcatel/files/>. The provision of the source code is free of charge from internet.

⁽¹⁾ It may not available according to the countries.

General information

- **Internet address:** www.alcatelonetouch.com
- **Hot Line Number:** see "TCL Communication Services" leaflet or go to our website.
- **Address:** Room 1910-12A, Tower 3, China HK City, 33 Canton Road, Tsimshatsui, Kowloon, Hong Kong
- **Electronic labeling path:** Touch Settings\Regulatory & Safety or press *#07#, you can find more information about labeling ⁽¹⁾.

On our website, you will find our FAQ (Frequently Asked Questions) section. You can also contact us by e-mail to ask any questions you may have.

An electronic version of this user guide is available in English and other languages according to availability on our server: www.alcatelonetouch.com

Your telephone is a transceiver that operates on GSM in quad-band (850/900/1800/1900 MHz) or UMTS in dual-band (900/2100 MHz).

CE | 588

This equipment is in compliance with the essential requirements and other relevant provisions of Directive 1999/5/EC. The entire copy of the Declaration of Conformity for your telephone can be obtained through our website: www.alcatelonetouch.com.

Protection against theft ⁽²⁾

Your telephone is identified by an IMEI (phone serial number) shown on the packaging label and in the phone's memory. We recommend that you note the number the first time you use your telephone by entering *#06# and keep it in a safe place. It may be requested by the police or your operator if your telephone is stolen. This number allows your mobile telephone to be blocked preventing a third person from using it, even with a different SIM card.

⁽¹⁾ It depends on countries.

⁽²⁾ Contact your network operator to check service availability.

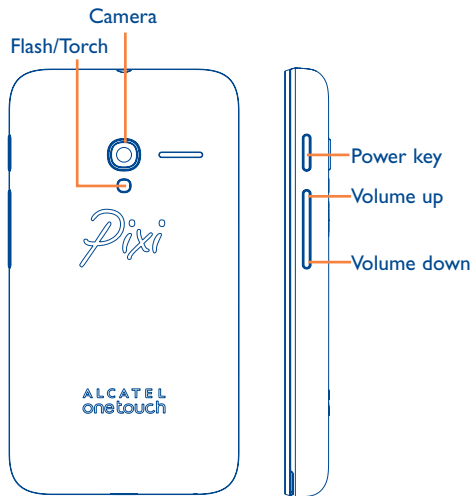
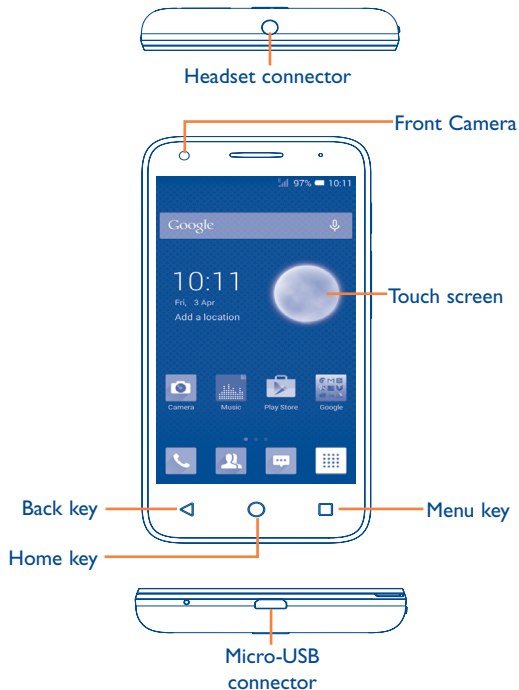
Disclaimer

There may be certain differences between the user manual description and the phone's operation, depending on the software release of your telephone or specific operator services.

TCL Communication shall not be held legally responsible for such differences, if any, nor for their potential consequences, which responsibility shall be borne by the operator exclusively. This handset may contain materials, including applications and software in executable or source code form, which is submitted by third parties for inclusion in this handset ("Third Party Materials"). All third party materials in this handset are provided "as is", without warranty of any kind, whether express or implied, including the implied warranties of merchantability, fitness for a particular purpose or use/third party application, interoperability with other materials or applications of the purchaser and non-infringement of copyright. The purchaser undertakes that TCL Communication has complied with all quality obligations incumbent upon it as a manufacturer of mobile devices and handsets in complying with Intellectual Property rights. TCL Communication will at no stage be responsible for the inability or failure of the Third Party Materials to operate on this handset or in interaction with any other devices of the purchaser. To the maximum extent permitted by law, TCL Communication disclaims all liability for any claims, demands, suits or actions, and more specifically – but not limited to – tort law actions, under any theory of liability, arising out of the use, by whatever means, or attempts to use, such Third Party Materials. Moreover, the present Third Party Materials, which are provided free of charge by TCL Communication, may be subject to paid updates and upgrades in the future; TCL Communication waives any responsibility regarding such additional costs, which shall be borne exclusively by the purchaser. The availability of the applications may vary depending on the countries and the operators where the handset is used; in no event shall the list of possible applications and software provided with the handsets be considered as an undertaking from TCL Communication; it shall remain merely as information for the purchaser. Therefore, TCL Communication shall not be held responsible for the lack of availability of one or more applications wished for by the purchaser, as its availability depends on the country and the operator of the purchaser. TCL Communication reserves the right at any time to add or remove Third Party Materials from its handsets without prior notice; in no event shall TCL Communication be held responsible by the purchaser for any consequences that such removal may have on the purchaser regarding the use or attempt to use such applications and Third Party Materials.

Your mobile.....

1.1 Keys and connectors



Menu key

- **Option menu.** Touch to access **Manage Home screen, Add widgets, Manage applications, Wallpaper and Settings.**
- **Recent apps.** Touch and hold to open a list of thumbnail images of apps you've worked with recently. Touch it to open an app. Swipe it upwards or downwards to remove a thumbnail from the list.



Home key

- While on any application or screen, touch to return to the Home screen.



Back key

- Touch to go back to the previous screen, or to close a dialog box, options menu, the notification panel, etc.



Power key

- Press: Lock the screen/Light up the screen.
- Press and hold: Power on or generate a popup menu selecting from **Power off/Restart/Aeroplane mode** or icons of **Ringer mode**.
- Press to mute the ringtone when there's an incoming call.
- Press and hold for more than 10 seconds to restart the phone when the system halted.
- Press and hold **Power** key and **Volume down** key to capture a screenshot.
- Press and hold **Power** key and **Volume up** key under power off mode to restore factory set.



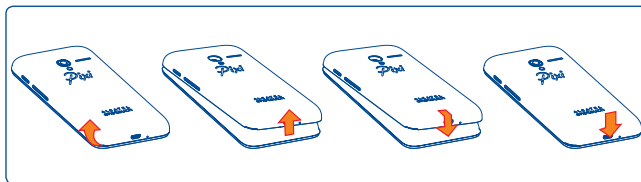
Volume keys

- Under call mode, adjust the earpiece or headset volume.
- In Music/Video/Streaming mode, adjust the media volume.
- In general mode, adjust the ringtone volume.
- Mute the ringtone of an incoming call.
- In Camera mode, using it as the capture key allows you to take a photo.

1.2 Getting started

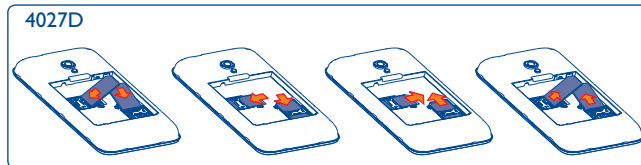
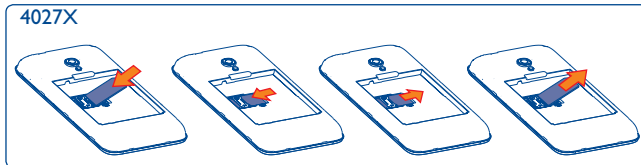
1.2.1 Set up

Removing or installing the back cover



Inserting or removing the SIM card

You must insert your SIM card to make phone calls. Please power off your phone before inserting or removing the SIM card.



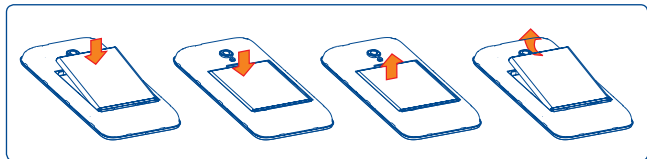
Place the SIM card with the chip facing downwards and slide it into its housing. Make sure that it is correctly inserted. To remove the card, press and slide it out.



For dual SIM models, both SIM1 and SIM2 can support 2G and 3G networks. If both of them are 3G SIM cards, only one card can support 3G network ⁽¹⁾. Your phone only supports mini-SIM card. Do not attempt to insert other SIM types like micro and nano cards, otherwise you may damage your phone.

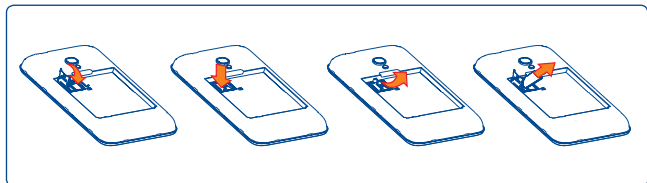
Installing or removing the battery

Power off your phone before removing the battery.



- Insert and click the battery into place, then close the cover.
- Unclip the cover, then remove the battery.

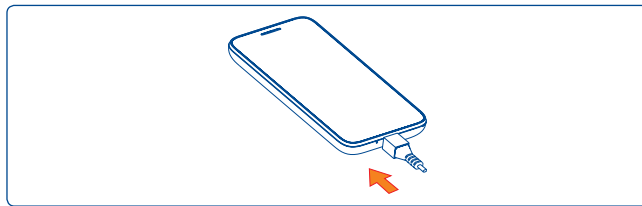
Installing or removing the microSD card



To install, open microSD card lock first, and then place the external microSD card into the slot with the gold contact facing down. To remove the external microSD card, open microSD card lock and take it out from the slot.

⁽¹⁾ 4027D only.

Charging the battery



Connect battery charger to your phone and plug into the socket.



If the battery is very low, there will be no indication that power is being received until the charge is sufficient to show the charging status bar. To reduce power consumption and energy waste, once the battery is fully charged, disconnect your charger from the plug; switch off Wi-Fi, GPS, Bluetooth or background-running applications when not in use; reduce the backlight time, etc.

1.2.2 Power on your phone

Hold down the **Power** key until the phone powers on, unlock your phone (Slide, PIN, Password, Pattern, Face unlock or Voice unlock) if necessary and confirm. The Home screen will then be displayed.

If you do not know your PIN code or if you have forgotten it, contact your network operator. Do not leave your PIN code with your phone. Store this information in a safe place when not in use.

Set up your phone for the first time

The first time you power on the phone, you should set the following options:

- Touch **Get started...**, then select the phone's language.
- The device will search for service by itself. The process of activation will take a few minutes
- Select your input keyboard, then touch **Next**.
- Select a SIM card or choose **Always ask** for voice call, messaging, etc ⁽¹⁾.
- Set your date and time zone, you can also choose **Automatic time zone**, then touch **Next**.
- **Set up your Google account:** Touch **Set up now**. If you have a Google account, touch **Sign in**, then enter your username and password. If you forgot your password, you can go to <http://www.google.com/> to retrieve it. Touch **Next** to skip to the next step.
- Touch **Next**, then the Setup complete screen will display, touch **Finish** to confirm.

When the phone is powered on, you can connect to a Wi-Fi network, without a SIM card inserted (refer to section "6.1.2 Wi-Fi"), to sign into your Google account and to use some features.

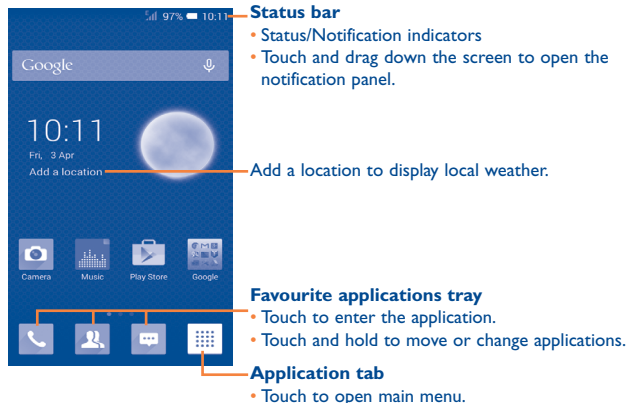
1.2.3 Power off your phone

Hold down the **Power** key until the popup menu appears, select **Power off** to confirm.

⁽¹⁾ 4027D only.

1.3 Home screen

You can bring all the items (applications, shortcuts, folders widgets) you love or use most frequently to your Home screen for quick access. Touch the **Home** key to switch to Home screen.



Home screen is provided in an extended format to allow more space for adding applications, shortcuts etc. Slide the Home screen horizontally left and right to get a complete view of the Home screen. The row of small squares at the lower part of the screen indicates which screen you are viewing.

1.3.1 Using the touchscreen



Touch

To access an application, touch it with your finger.

Long press



Long press the Home screen to access the available options for setting the Home screens.

Drag



Place your finger on any item to drag it to another location.

Slide/Swipe



Slide the screen to scroll up and down the applications, images, web pages... at your convenience.

Flick



Similar to swiping, but flicking makes it move quicker.

Pinch/Spread



Place your fingers of one hand on the screen surface and draw them apart or together to scale an element on the screen.

Rotate



Automatically change the screen orientation from portrait to landscape by turning the phone sideways to have a better view.

1.3.2 Status bar

From status bar, you can view both phone status (to the right side) and notification information (to the left side).























Status icons

For dual SIM model, status icons referring to either SIM1 or SIM2 will be identified by a colour which you have defined. ⁽¹⁾

	GPRS connected		Roaming
	GPRS in use		No SIM card inserted
	EDGE connected		Vibrate mode
	EDGE in use		Ringer is silenced
	3G connected		Phone microphone is muted
	3G in use		Battery is very low
	HSPA (3G+) connected		Battery is low
	HSPA (3G+) in use		Battery is partially drained
	Connected to a Wi-Fi network		Battery is full
	Bluetooth is on		Battery is charging
	Aeroplane mode		Headset connected
	Alarm is set		No signal
	GPS is on		Signal strength

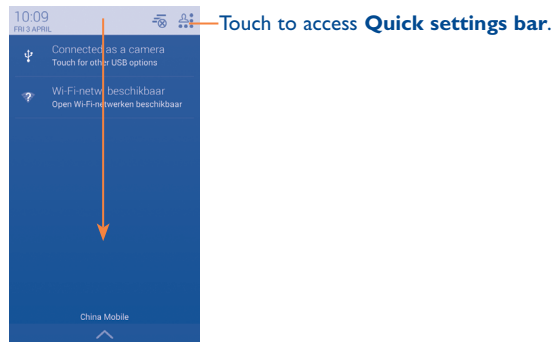
⁽¹⁾ Define through **Settings\SIM management\SIM INFORMATION\Set background colour**. 4027D only.

Notification icons


	New text or multimedia message		Missed call
	Problem with SMS or MMS delivery		Call on hold
	New Hangouts message		Call forwarding is on
	New voicemail		Uploading data
	Upcoming event		Downloading data
	Data is synchronising		Download finished
	Screenshot error		Select input method
	USB tethering is on		An open Wi-Fi network is available
	Portable Wi-Fi hotspot is on		Phone is connected via USB cable
	Screenshot captured		Radio is on
	Carrier data use threshold approaching or exceeded		System update available
	Call in progress		Connected to VPN

Notification panel

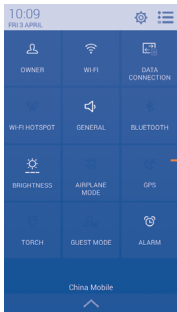
Touch and drag down the Status bar to open the Quick settings panel or Notification panel. Touch and drag up to close it. When there are notifications, you may touch and drag the Status bar with two fingers to access Quick settings panel directly. From the Notification panel, you can open items and other reminders indicated by notification icons or view wireless service information.



Touch one notification and slide it sideways to delete it.

Touch the icon  to clear all event-based notifications (other ongoing notifications will remain).

Touch  and then the Settings icon  to access **Settings**.

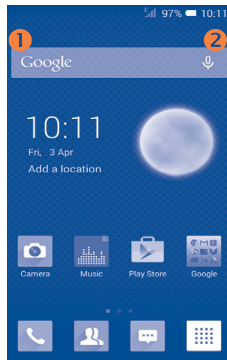


Quick settings bar


- Touch icons to enable/disable functions or to change modes.

1.3.3 Search bar


The phone provides a Search function which can be used to locate information within applications, the phone or the web.



1 Search by text

- Touch Search bar from the Home screen.
- Enter the text/phrase you want to search for.
- Touch  on the keyboard if you want to search on the web.



2 Search by voice

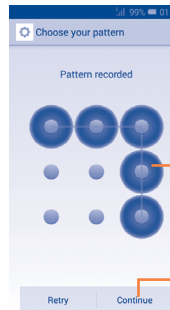
- Touch  from the Search bar to display a dialog screen.
- Speak the word/phrase you want to search for. A list of search results will display for you to select from.

1.3.4 Lock/Unlock your screen

To protect your phone and privacy, you can lock the phone screen by choosing slide or creating a variety of patterns, PIN or password, etc.

To create a screen unlock pattern (refer to section "Screen lock" for detail settings)

- Drag down the notification panel and touch  and then the settings icon  to enter **Settings**, then touch **Lock settings** **Select screen lock** **Pattern**.
- Draw your own pattern.



Draw your unlock pattern

Touch to confirm by drawing pattern again

To create a screen unlock PIN/Password

- Touch **Settings**\Security\Lock settings>Select screen lock\PIN or Password.
- Set your PIN or password.

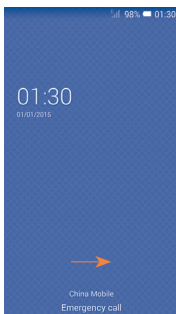
To lock phone screen

Press the **Power** key once to lock the screen.

To unlock phone screen


Press the **Power** key once to light up the screen, draw the unlock pattern you have created or enter your PIN or password, etc. to unlock the screen.

If you have chosen **Slide** as the screen lock, touch and drag lock screen to right to unlock the screen.



1.3.5 Personalise your Home screen

Add

Touch the application tab , touch and hold an application to activate Move mode, and drag the item to any Home screen as you prefer.

Reposition

Touch and hold the item to be repositioned to activate Move mode, drag the item to the desired position and then release. You can move items both on the Home screen and the Favourite tray. Hold the icon on the left or right edge of the screen to drag the item to another Home screen.


Remove

Touch and hold an item to activate Move mode and remove it by dragging it on top of the **Remove** icon. Release after the icon turns red.

Create folders

To improve the organisation of items (shortcuts or applications) on the Home screen and the Favourite tray, you can add them to a folder by stacking one item on top of another. To rename a folder, open it, touch the folder's title bar to input the new name.

Wallpaper customisation


Touch  and select **Wallpaper**. A popup window named **Select wallpaper from** will appear, offering a range of options. Select an option and slide left or right to locate a desired image, touch **Set wallpaper** to confirm. Alternatively follow these steps: **Settings > Display > Wallpaper**.

1.3.6 Application tab

Touch  from the Home screen to enter the applications list.

To return to the Home screen, touch the **Home** key.

Consult recently-used applications

To consult recently-used applications, you can long press . Touch a thumbnail in the window to open the related application. Touch one thumbnail and slide it upwards or downwards to delete it.





1.3.7 Volume adjustment

Using volume key

Press **Volume** key to adjust the volume. To activate the vibrate mode, press the **Volume down** key until the phone vibrates. Press the **Volume down** key once more to activate the silent mode.

Using Settings menu

Drag down the notification panel and touch  and then the settings icon  to enter **Settings**, then touch **Sound**, you can set the volume of calls ringtones, notification, system and etc. to your preference.

1.4 Applications and widgets

The Applications (apps) list contains all pre-embedded and newly installed apps.

To access the list, touch  from the Home screen. To return to the Home screen, touch the **Home** key or the **Back** key.

By touching and holding an empty area in the Home screen, you can switch to widget interface mode.

2 Text input

2.1 Using Onscreen Keyboard

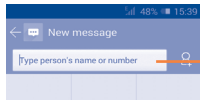
Onscreen Keyboard settings

Touch application tab from the Home screen, select **Settings\Language & input**, touch the Settings icon  on the right of **Android keyboard**, and then a series of settings are available for your selection.

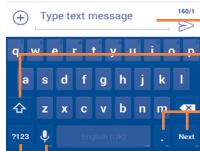
Adjust the Onscreen Keyboard orientation

Turn the phone sideways or upright to adjust the Onscreen Keyboard orientation. You can also adjust it by marking the checkbox in **Settings\Display\Auto-rotate screen**.

2.1.1 Android keyboard



Touch to enter text or numbers.



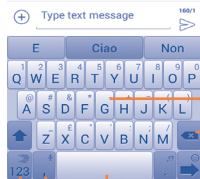
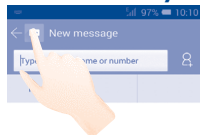
Touch to switch between "abc/Abc" mode; Long press to switch between "abc/ABC" mode.

Touch to enter symbols/emoticons.

Long press to show input options; when Wi-Fi or data connection is on, touch to enter voice input.

Touch to switch between symbol and numeric keyboard.

2.1.2 SwiftKey keyboard



Slide through letters to input characters

Touch to delete incorrect characters





Touch to insert a space or complete the current word or insert a prediction as preferred

Touch and hold to switch voice input

Touch to enter **Numbers** and symbols, etc.

2.2 Text editing

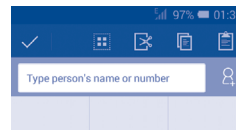
You can edit the text you have entered.

- Touch and hold or double-tap within the text you would like to edit.
- Drag the tap to change the highlighted selection.
- The following options will appear: **Select all** , **Cut** , **Copy**  and **Paste** .
- Touch the icon ✓ to confirm.



You can also insert new text

- Touch where you want to type, or long press a blank space, the cursor will blink and the tabs will show. Drag the tab to move the cursor.
- If you have selected any text, touch the tab to show **PASTE** icon which allows you to paste any text you have previously copied.

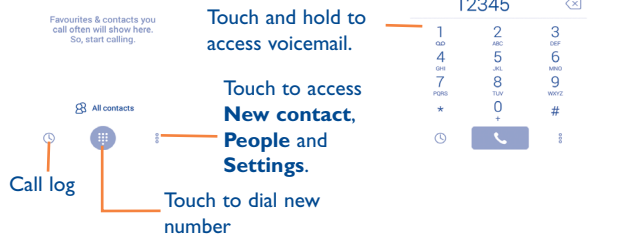
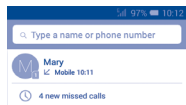


3 Phone call, Call log and Contacts

3.1 Phone

3.1.1 Placing a call

You can easily launch a call using **Phone**. Touch Application tab from the Home screen and select **Phone**.



Enter the desired number from the keyboard directly or select a contact from **All contacts** or **Call log** by sliding or touching tabs, then touch

The number you entered can be saved to **Contacts** by touching and selecting **Add to Contacts**.

If you make a mistake, you can delete the incorrect digits by touching .

To hang up a call, touch .

International call

To dial an international call, touch and hold to enter "+", then enter the international country prefix followed by the full phone number and finally touch .

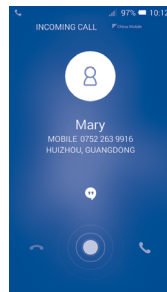
Emergency call

If your phone has network coverage, dial the emergency number and touch to make an emergency call. This works even without a SIM card and without typing the PIN code.



When making a call with two SIM cards installed, a dialog box will pop up for you to choose the preferred SIM card.

3.1.2 Answering or rejecting a call



When you receive a call, touch .

- Slide rightward to answer;
- Slide leftward to reject;
- Slide upward to reject the call by sending a preset message.

To mute incoming calls, press the **Volume up/down** key.

To mute the ringtone volume of an incoming call, press the **Volume up/down** key or turn the phone face down if **Turn over to mute** is activated. To activate, touch **Settings\Gestures\Turn over to mute**.

3.1.3 Calling your voicemail

Your voicemail is provided by your network to avoid missing calls. It works like an answering machine that you can consult at any time.

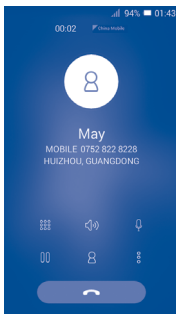
To access your voicemail, touch and hold  **Phone** tab.

To set your voicemail number, touch  and select **Settings\Call settings\Voice call\Voicemail**.

If you receive a voicemail, a voicemail icon  appears on the Status bar. Open the Notification panel and touch **New Voicemail** to hear it.

3.1.4 During a call

To adjust the volume during a call, press the **Volume up/down** key.



Touch to display Dial pad.



Touch to activate the speaker during the current call. Touch this icon again to deactivate the speaker.



Touch to mute the current call. Touch this icon again to unmute the call.



Touch to hold the current call. Touch this icon again to retrieve the call.



Touch to add a call.



Touch to start recording.




To avoid accidental touchscreen operations during a call, the screen will be locked automatically when you put the cellphone close to your ear; and it will be unlocked when the cellphone is taken away from your ear.

3.1.5 Managing multiple calls

With this phone you can handle multiple calls at the same time.

Swap calls





When you accept two calls, touch icon , you can now switch between two lines. The current call is put on hold and you can join in the other call.

Conference calls ⁽¹⁾


To set up a conference call:

- Place a call to the first participant of the conference call.
- Touch icon  and select **Add call**.

⁽¹⁾ Depending on your network operator.

- Enter the phone number of the person you want to add to the conference and touch icon **Call**. You can also add participants from **People** or **Call log**.
- Touch the  icon to start a conference call.
- During a conference call, touch  to drop a participant or to talk privately to one of the participants. Touch **End** to drop the participant from the conference, touch  to talk privately to the participant and hold the other participants.
- Touch  to end the conference call and disconnect all callers.

3.1.6 Call settings

Touch  and select **Settings** from the Dial screen. The following options are available:

Voice call

- **Vicemail**

Service Opens a dialog box where you can select your carrier's voicemail service or another service.

Vicemail settings If you are using your carrier's voicemail service, this opens a dialog box where you can enter the phone number to use for listening to and managing your voicemail. You can enter a comma (,) to insert a pause into the number — for example, to add a password after the phone number.

- **Call forwarding**

Touch to configure how your calls are forwarded when you are busy, unanswered or unreachable.

- **Call barring**

You can activate or deactivate the call barring for outgoing and incoming calls. The various options are:

All outgoing calls	All outgoing calls are barred.
International outgoing calls	Outgoing international calls are barred.
International except home	Outgoing international calls except those to your country of subscription are barred.
All incoming calls	All incoming calls are barred.
Incoming calls in roaming	Incoming calls are barred when you are abroad.
Cancel all	Deactivate all call barring.
Change barring password	Change the original barring password for activating call barring.
• Additional settings	
Caller ID	Opens a dialog box where you can set whether your phone number is displayed when making calls.
Call waiting	Mark the checkbox to notify you of a new incoming call.
Call waiting status	Check the call waiting status of your phone.

Video call ⁽¹⁾

- **Local video replacement** You can choose a picture from your collection to display when the Camera is unreachable.
- **Display peer video** Mark the checkbox to display a picture for replacing peer-to-peer when it is unavailable.
- **Peer video replacement** Set a picture to display when peer video is unavailable.
- **Enable back camera** Mark the checkbox to turn on back camera during a video call.
- **Bigger Peer video** Touch to enable a bigger view of peer.
- **Auto drop back** Mark the checkbox to enable automatic switch back to voice call.
- **Outgoing video call** Touch to display local video when you place a call.
- **Incoming video call** Touch to display local video when receiving an incoming call.
- **Call forwarding** Touch to configure how your calls are forwarded when you are busy, unanswered or unreachable.
- **Call barring** Touch to configure how your calls are forwarded when you are busy, unanswered or unreachable.
- **Additional settings**
 - Caller ID** Open a dialog box where you can set whether your phone number is displayed when making calls.
 - Call waiting** Mark the check box to notify you of a new incoming call.
 - Call waiting status** Touch to view call waiting status if available.

⁽¹⁾ Depending on your model.

Other settings

• Fixed Dialling Numbers

Fixed Dialling Number (FDN) is a SIM service mode, where outgoing calls are restricted to a set of phone numbers. These numbers are added to the FDN list. The most common practical application of FDN is for parents to restrict the phone numbers which their children can dial.

For security reasons, you'll be prompted to enable FDN by entering SIM PIN2 which is usually acquired from your service provider or SIM maker.

• Minute reminder

Mark the checkbox to enable minute reminder at 50s of every minute during a call.


• Quick responses




Touch to edit quick responses which will be used when you reject a call with messages.

• International dialling assist

Mark the checkbox to activate.

3.2 Viewing your call history

You can access your call memory by touching  from the Phone screen to view call history in categories of Incoming calls, Outgoing calls, and Missed calls.

-  Missed calls
-  Outgoing calls
-  Incoming calls

Touch icons on top of call logs to change among different kinds.



Touch a contact or number to view information or perform further operations.

You can view detailed information of a call, launch a new call or send messages to a contact or number, or add numbers to **People** (only available for unsaved phone numbers), etc.

Touch the photo  to open the Quick Contact panel.

To clear the entire call memory, touch  and select **Delete**.

3.3 Speed dial settings

You can access this setting screen by touching  and then **Speed Dial** on Dial screen, then select contacts to define 2-9 screen keys as a speed dialler. Touch  to remove contacts from speed dial.

3.4 People.....

The **People** enables quick and easy access to the people you want to reach.

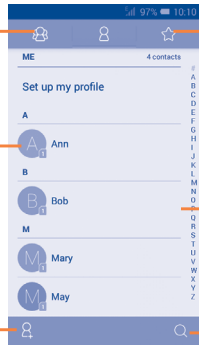
You can view and create contacts on your phone and synchronise these with your Gmail contacts or other applications on the web or on your phone.

3.4.1 Consult your contacts

Touch to view your contact groups.

Touch icon to open Quick Contact panel.

Touch to add a new contact.



Touch to view your favourite contacts.

Touch to view the contact's detailed information.

Touch to search in **People**.




Touch  to display contacts list option menu.

The following actions are enabled:

- **Delete contact** Select and delete unwanted contacts.
- **Contacts to display** Choose contacts to display.
- **Import/Export** Import or export contacts between phone, SIM card, microSD card and phone storage.
- **Accounts** Manage the synchronisation settings for different accounts.
- **Settings** Set contacts' display mode.
- **Share visible contacts** Share contacts with others by sending the contact's vCard to them via Bluetooth, Email, SMS, etc.

3.4.2 Managing contact groups

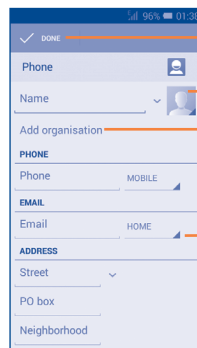
The contact group helps you to improve the organisation of your contacts. You can add, remove and view groups in the **Contact group** screen.

Touch the  icon to view local groups. To create a new group, touch the  icon, enter the new name and touch **DONE** to confirm. If you have added accounts to your phone, touch the  icon to view groups in accounts.

3.4.3 Adding a contact

Touch the  icon in the contact list to create a new contact.

You are required to enter the contact's name and other contact information. By scrolling up and down the screen, you can move from one field to another easily.



The screenshot shows a contact creation form with the following fields and annotations:

- Phone**: A dropdown menu at the top.
- Name**: A text input field with a small profile picture icon to its right.
- Add organisation**: A text input field.
- PHONE**: A section header for phone numbers.
- Phone**: A text input field with a **MOBILE** label to its right.
- EMAIL**: A section header for email addresses.
- Email**: A text input field with a **HOME** label to its right.
- ADDRESS**: A section header for address fields.
- Street**: A text input field with a dropdown arrow to its right.
- PO box**: A text input field.
- Neighborhood**: A text input field.

Annotations with orange lines point to:

- The **DONE** button at the top left.
- The profile picture icon next to the **Name** field.
- The **Add organisation** field.
- The **MOBILE** label next to the **Phone** field.
- The **HOME** label next to the **Email** field.
- The dropdown arrow next to the **Street** field.

Touch to save.

Touch to select a picture for the contact.

Touch to add a new label.


Touch to unfold the other predefined labels of this category.

If you want to add more information, touch **Add another field** to add a new category.

When finished, touch **DONE** to save.

To exit without saving, you can touch  and press **Discard** or press Back key to cancel.

Add to/remove from Favourites

To add a contact to Favourites, you can touch a contact to view details then touch  to add the contact to Favourites (the star will turn gold in colour).

To remove a contact from favourites, touch the gold star  on contact details screen.



Only phone contacts can be added to Favourites.

3.4.4 Editing your contacts

To edit contact information, touch on the contact details screen, then touch **Edit**. When finished, touch **DONE**.

Change a contact's default phone number

The default phone number (the number which has priority when making a call or sending a message) will always be displayed under the contact name.

To change the default phone number, touch and hold the number you want to set as the default number from the contact's details screen, then select **Set default**. A ✓ appears after the number.

This choice is only available when the contact has more than one number.

Set the ringtone for a contact

On the contact's detail screen, touch to display the list options menu, touch **Set ringtone**.

Delete a contact

To delete a contact, touch and select **Delete** from the contact details screen.

On contacts list screen, touch and then **Delete contact**, select the contact(s) you want to remove and touch **OK** to confirm. Touch **Select all** and then **OK** to delete all contacts, touch **CANCEL** to exit.en




The contact you have deleted will also be removed from other applications on the phone or web the next time you synchronise your phone.

3.4.5 Communicating with your contacts

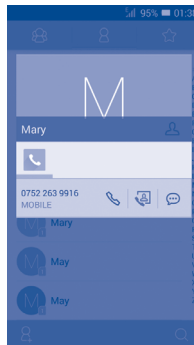
From the contacts list, you can communicate with your contacts by making a call or exchanging messages.

To launch a call to a contact, touch the contact to enter the detail screen, then touch the number.

To send a message to a contact, touch the contact to enter the detail screen, then touch the  icon on the right side of the number.

Use Quick contact for Android

Touch a contact's picture to open Quick Contact for Android, then you can touch the number or the  icon for the way you want to connect.



The icons available on Quick Contact panel depend on the information you have for the contact and the applications and accounts on your phone.

3.4.6 Importing, exporting and sharing contacts

This phone enables you to import or export contacts between phone, SIM card, microSD card and phone storage.

From Contacts screen, touch to open the options menu, touch **Import/export**, then choose to import/export contacts from/to SIM card, Phone, SD card, Phone storage, Accounts, etc.

To import/export a single contact from/to SIM card, choose an account and target SIM card(s), select the contact you want to import/export, and touch to confirm.

To import/export all contacts from/to SIM card, choose an account and target SIM card(s), touch **Select all** and touch to confirm.

You can share a single contact or contacts with others by sending the contact's vCard to them via Bluetooth, Gmail, etc.

3.4.7 Displaying contacts

You can configure which group of contacts, for each account you want to display in the People list. Touch and select **Contacts to display** from the contacts list screen, then you can choose which contacts to display.

By touching and selecting **Settings**, you can sort list by the first name or last name, as well as view contact names as first/last name first.

3.4.8 Joining/Separating contacts ⁽¹⁾

To avoid duplication, you can add any new contact information to existing contacts in a single action.

Touch the contact which you want to add information to, touch and select **Edit**, then touch again and touch **Join**.


⁽¹⁾ Only applicable for phone contacts.

At this time, you will be required to select the contact whose information you want to join with the first contact. The information from the second contact is added to the first one, and the second contact will no longer be displayed in the Contacts list.

To separate contact information, touch the contact whose information you want to separate, touch and touch **Edit**, then touch again and touch **Separate**, touch **OK** to confirm.

3.4.9 Synchronising contacts in multiple accounts

Contacts, data or other information can be synchronised from multiple accounts, depending on the applications installed on your phone.

To add an account, drag down the notification panel and touch  to enter **Settings**, then touch **Add account**.

You are required to select the kind of account you are adding, like Google, Corporate, etc.

As with other account setups, you need to enter detailed information, like username, password, etc.

You can remove an account to delete it and all associated information from the phone. Open the **Settings** screen, touch the account you want to delete, touch and select **Remove account**, then confirm.

Turn on/off the sync & Auto-sync

Touch an account to enter the account screen, mark/unmark the checkbox(s) to turn on/off the account's auto-sync. When activated, all changes to information on the phone or online will be automatically synchronised to each other.

Sync manually

You can also synchronise an account manually on the **Accounts** screen. Touch an account in the list, then touch and select **Sync now**.

4 Messaging, Email.....

4.1 Messaging.....

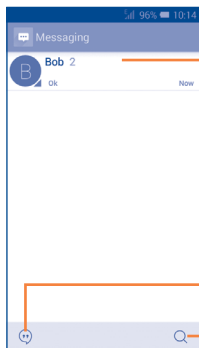


You can create, edit and receive SMS and MMS with this mobile phone. To access this feature, touch from the Home screen.

All messages you receive or send out can be saved in the phone's memory or SIM card. To consult the SMS messages stored in the SIM card, touch from the Messaging screen, then touch **Settings** **Text message(SMS)** **Manage SIM messages**.

4.1.1 Writing a message

On the message list screen, touch the new message icon to write text/multimedia messages.



- Touch to view the whole message thread.
- Touch & hold to delete message or add shortcut.
- Touch to create a new message.
- Touch to search in all messages.

For saved contacts, touch the photo to open the **Quick Contact** panel to communicate with the contact. For unsaved contacts, touch the photo to add the number to your **People**.

Sending a text message

Enter the mobile phone number of the recipient on **Type person's name or number** bar or touch to add recipients, touch **Type text message** bar to enter the text of the message. When finished, touch to send the text message.

An SMS of more than 160 characters will be charged as several SMS. Specific (accented) letters will also increase the size of the SMS, this may cause multiple SMS to be sent to your recipient.

Sending a multimedia message


MMS enables you to send video clips, images, photos, contacts, calendar animations, slides and sounds to other compatible mobiles and e-mail addresses.

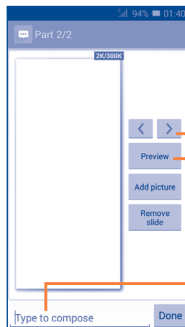
An SMS will be converted to MMS automatically when media files (image, video, audio, slides, etc.) are attached or subject or email addresses are added.

To send a multimedia message, enter the recipient's phone number in the "**Type person's name or number**", touch the **Type text message** bar to enter the text of the message. Touch to open the option menu, select **Add subject** to insert a subject, and touch to attach a picture, video, audio and so on.

When finished, touch to send the multimedia message.

Attachment options:

- **Capture picture** Access the Attachment Camera to capture a new picture for attaching.
- **Capture video** Access the Camcorder to record a new video for attaching.
- **Record audio** Enter the Sound Recorder to record a voice message for attaching.
- **Contact** Access **People** application to select one or more contact(s) to attach.
- **Pictures** Access the Gallery or Downloads, Photos, File Manager, Dropbox and WPS Office to select a picture as attachment.
- **Videos** Access the Gallery or Downloads, Photos, File Manager, Dropbox and WPS Office to select a video as an attachment.
- **Audio** Access a selection of audio files for attaching.
- **Calendar** Access **Calendar** application to select an event to attach.
- **Slideshow** Enter the Edit slide show screen, touch **Add slide** to create a new slide, and touch a currently existing slide to edit it (see following picture). Touch  to get more actions, like setting the slide duration, adding music, etc.




Touch to go to previous or next slide.


Touch to preview the current slide.

Touch to edit the title of this slide.

4.1.2 Manage messages

When receiving a message, a  icon will appear on the status bar as notification. Drag down the status bar to open the Notification panel, touch the new message to open and read it. You can also access the Messaging application and touch the message to open.

Messaging are displayed in conversational order.

To reply to a message, touch the current message to enter the message-composing screen, enter the text, then touch .

Touch and hold a message in message details screen, the following options will be available:

- **Copy** This option is only available for SMS. Touch to copy current message content and past it to **Type text message** bar of the new message you are going to compose.
- **Forward** Touch to forward the message to another recipient.
- **Delete message** Delete the current message.

- **Lock/Unlock message** Touch to lock/unlock the message so it can't/can be deleted if you reach the maximum number of stored messages.
- **View message details** Touch to view details of the message.
- **Select text** Touch to select the message text to copy, cut, add to dictionary, etc.
- **Save message to SIM card** This option displays when the message is an SMS. Touch to save the message to the SIM card.

4.1.3 Adjust message settings

You can adjust a set of message settings. From Messaging application screen, touch and select **Settings**.

Text message (SMS)

- **Delivery reports** Mark to request a delivery report for each text message you send.
- **Manage SIM messages** Touch to view or manage messages on your SIM card.
- **Edit quick text** Touch to add or edit message templates.
- **Validity period** Touch to select SMS validity period.
- **SMS storage location** Touch to select phone or SIM card to store messages.
- **Alphabet management** Touch to manage alphabet.
- **SMS signature** Touch to enable or disable SMS signature.
- **Edit SMS signature** Touch to edit SMS signature.

Multimedia message (MMS)

- **Group messaging** Mark the checkbox to send a single message to multiple recipients.
- **Delivery reports** Select to request a delivery report for each multimedia message you send.
- **Read reports** Select to request a report on whether each recipient has read a multimedia message sent by you.
- **Send read report** Select to request a report on whether the multimedia message has been sent out.
- **Auto-retrieve** Select to download full MMS message (including message body and attachment) automatically to your phone. Otherwise, download only the MMS message header.
- **Roaming auto-retrieve** Select to download full MMS message (including message body and attachment) automatically when roaming. Otherwise, download only the MMS message header to avoid extra charges.
- **Creation mode** Touch to select MMS creation mode.
- **Maximum message size** Select to edit the message size limit, but it should not be more than 300KB.
- **Priority** Set MMS priority as **High**, **Normal** or **Low**.

Notifications

- **Notifications** Select to display message notifications in status bar.

- **Mute** Touch to mute or select the time interval of notification sound.
- **Select ringtone** Touch to select a ringtone as a new message notification tone.

General

- **Chat wallpaper** Touch to select wallpaper for message background.
- **Message font size** Touch to select message font size.
- **Show email address** Mark the checkbox to include email address in contact results.
- **Delete old messages** Select to delete old messages when the maximum number of stored messages is reached.
- **Text message limit** Touch to set the number of text messages to be saved per conversation.
- **Multimedia message limit** Touch to set the number of multimedia messages to be saved per conversation.
- **Enable CB ringtone** Mark the checkbox to enable CB ringtone.
- **Select CB ringtone** Touch to select a ringtone for cell broadcast messages.
- **Cell broadcast** Touch to choose a SIM card and configure cell.
- **Enable WAP PUSH** Mark the checkbox to enable reception of WAP PUSH.
- **Auto-Launch SL** Mark the checkbox to automatically launch Service Loading (SL) messages when received.

4.2 Gmail/Email

The first time you set up your phone, you can select to use an existing Gmail or to create a new Email account.

4.2.1 Gmail






As Google's web-based email service, Gmail is configured when you first set up your phone. Gmail on your phone can be automatically synchronised with your Gmail account on the web. Unlike other kinds of email account, each message and its replies in Gmail are grouped in your inbox as a single conversation; all emails are organized by labels instead of folders.


To access Gmail

From the Home screen, touch the Application tab to enter the applications list, then touch **Gmail**.

Gmail displays messages and conversations from one single Gmail account at a time, if you own more than one account, you can add an account by touching the and select **Settings** from Inbox screen, then touch **ADD ACCOUNT**. When finished, you can switch to another by touching the account name from Inbox screen, then select the account you want to view.


To create and send emails

- Touch the  icon from Inbox screen.
- Enter recipient(s)'s email address in **To** field, and if necessary, touch  and select **Add Cc/Bcc** to add a copy or a blind copy to the message.
- Enter the subject and the content of the message.
- Touch  and select **Attach file** to add an attachment.
- Finally, touch the  icon to send.
- If you do not want to send the mail out right away, you can touch  and select **Save draft** or touch **Back** key to save a copy. To view the draft, touch your account name to display all labels, then select **Drafts**.

If you do not want to send or save the mail, you can touch  and then select **Discard**.


To add a signature to emails, touch  and select **Settings** from inbox screen, choose an account, then touch **Signature**.

To receive and read your emails




When a new email arrives, you will be notified by a ringtone or vibration, and a  icon will appear on Status bar.

Touch and drag down the Status bar to display the Notification panel, touch the new email to view it. Or you can also access the Gmail Inbox label and touch the new mail to read it.

You can search for an email by sender, receiver, subject, etc.

- Touch the Search icon from Inbox screen.
- Enter the keyword you want to search for in the searching box and touch  in the soft keyboard.


To reply or forward emails

- **Reply** When viewing an email, touch  to reply the sender of this mail.
- **Reply all** Touch  and select "**Reply all**" to send messages to all people in a mail loop.
- **Forward** Touch  and select "**Forward**" to forward the received mail to other people.

Managing Gmails by Labels


To conveniently manage conversations and messages, you can organise them using a Label.

To label a conversation when reading a conversation's messages, touch the icon  and select the label to assign to the conversation.

To view conversations by labels when viewing your inbox or another conversation list, touch the icon  then touch a label to view a list of conversations with that label.

To manage labels, touch **MANAGE LABELS** from account setting.

Mark the checkbox to select email to activate batch mode, and generate the following options:

-  Touch to archive the email message. To display the archived messages, you can touch  in Inbox screen then touch **All mail**.
-  Touch to delete the email message.
-  Touch to mark an email message as read or unread.
-  To assign a star or remove the star from the conversation.
- **Mark as (not) important** To mark the email as important or not important.
- **Mute** To mute the entire conversation. When muted, new mails related to this conversation will not be displayed in the **Inbox**, but archived.
- **Report spam** To report the email message/conversation as spam.
- **Report phishing** To report the email message/conversation as phishing.

Gmail settings

To manage Gmail settings, touch and select **Settings** in the label list.

General settings

- **Swipe to archive** Mark the checkbox to swipe left or right when viewing conversations.
- **Confirm before deleting** Mark the checkbox to request confirmation before deleting emails.
- **Confirm before archiving** Mark the checkbox to request confirmation before archiving emails.
- **Confirm before sending** Mark the checkbox to request confirmation before sending emails.
- **Reply all** Mark the checkbox to make the default responding to messages.
- **Auto-fit messages** Mark the checkbox to zoom in/out the messages to fit the screen.
- **Auto-advance** Touch to select which screen to show after you delete or archive a conversation.
- **Sender image** Mark the checkbox to show beside name in conversation list.

After touching an account, the following settings will appear:

- **Inbox type** To set this inbox as the default one or priority one.
- **Notifications** Select to activate notification when a new email arrives.
- **Inbox sound & vibrate** Touch to set Sound, Vibrate and Notify once.
- **Signature** To add a signature text to the end of each mail you send.
- **Sync Gmail** Touch to turn on/off Gmail sync.
- **Days of mail to sync** Touch to set the duration of days for mail sync.
- **Manage labels** Touch to open the Label screen, where you can manage synchronisation and notifications.
- **Download attachments** Mark the checkbox to auto download attachments to recent messages via Wi-Fi.

4.2.2 Email



Besides your Gmail account, you can also set up external POP3 or IMAP4 email accounts in your phone.

To access this function, touch Application tab from the Home screen, then select **Email**.

An email wizard will guide you through the steps to set up an email account.

- Enter the email address and password of the account you want to set up.
- Touch **Next**. If the account you entered is not provided by your service provider in the phone, you will be prompted to go to the email account settings screen to enter settings manually. Alternatively, you can touch **Manual setup** to directly enter the incoming and outgoing settings for the email account you are setting up.
- Enter the account name and display name in outgoing emails.
- To add another email account, you can touch and **Settings**, and finally touch **ADD ACCOUNT** on the right of the title to create the account.

To create and send emails

- Touch the icon  from Inbox screen.
- Enter recipient(s) email address(es) in **To** field.
- If necessary, touch and touch **Add Cc/Bcc** to add a copy or a blind carbon copy to the message.
- Enter the subject and the content of the message.
- Touch , touch **Attach file** to add an attachment.
- Finally, touch  to send.
- If you do not want to send the mail right away, you can touch and **Save draft** or touch **Back** key to save a draft.

4.3 Hangouts.....



Google's instant messaging service, Google Hangouts, lets you communicate with your friends whenever they are connected to this service.

To access this feature and sign in, touch Application tab from the Home screen, then touch **Hangouts**. All friends added by using Google Hangouts from the web or phone will be displayed in your friends list.

4.3.1 Chatting with your friends

To start a chat, touch the name of a friend in your Friends list, then enter your message and finally touch .

You can invite other friends to join in a group chat by touching and selecting **Add people** on the new group conversation screen and then selecting the friend you want to add.

4.3.2 To add a new friend

From the Friends list, touch the icon to add a new friend.

Enter the name, email, number or Circle of the friend you want to add, and if the friend is not yet on Hangouts, the system will require to send invite by telling the friend via SMS or Gmail. A notification with this invitation will be showed in your friend' messaging or Gmail.

If your friends invite you to do video talk or they send you message in the first time, you could select **Decline** or **Reply** in response.

4.3.3 To start and close a chat

Touch one friend from friends list, you could send messages to your friends or have a video call;

After you join Google+, you could send pictures to everyone in the google hangouts.

When you want to end a chat, touch back key from Chatting screen directly.

If you want to sign out, touch **Menu** key and **Settings\Choose an account \Sign out**.

4.3.4 To manage your friends

Besides adding new friends to your friends list, the following actions are available for your choice:

- **To view all friends** By default, all your friends are displayed in Friends list. Touch your friend could start the conversation directly. Touch and hold the friend to activate archive and delete.
- **New group** Add the person to a new group Hangout.

4.3.5 Settings

A series of settings are available for your selection by touching **Menu** key and **Settings\Choose an account** from Friends list screen, and choose an account.

- **Profile photo** Touch to set or change your Google + profile photo.
- **Invites** Touch to check the invite records.
- **Share your states** Touch to share your states with friends.
- **Video calls** Touch to make video calls.
- **Hidden contacts** Touch to hidden contacts if you don't want to see them.
- **Improve Hangout** Touch to improve your Handouts.
- **Hangouts messages** Mark the checkbox to activate the notification when receiving Hangouts requests.
- **Customize invites** Touch to enable that people in your circles can hangout with you or send you a request to Hangout.
- **Google+ profile** Touch to join Google+ to get more.
- **Phone number confirmed** Touch to confirm phone number to help people find you and see your Google account name on Hangouts.
- **Sign out** Touch to remove your accounts.

5 Calendar & Time.....

5.1 Calendar

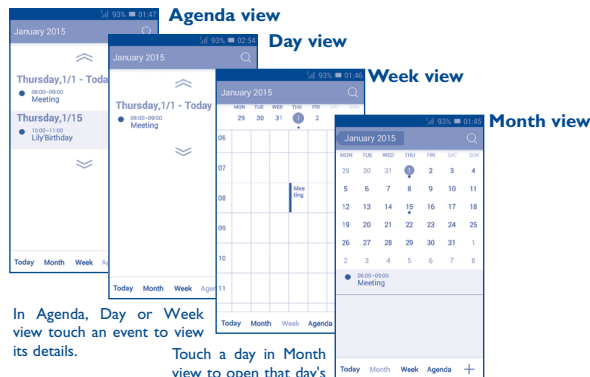
WED
13

Use the Calendar to keep track of important meetings, appointments, etc.

5.1.1 Multimode view

You can display the Calendar in daily, weekly, monthly, or agenda view.

Touch the month label on the top of the screen to change your Calendar view, and a drop-down menu will display for you to choose. Touch **Today** view to return to Today's view.




In Agenda, Day or Week view touch an event to view its details.

Touch a day in Month view to open that day's events.




5.1.2 To create new events

You can add new events from any Calendar view.


- Touch the  icon to access new event edit screen.
- Fill in all required information for this new event. If it is a whole-day event, you can select **All day**.
- Invite guests to the event. Enter the email addresses of the guests you want to invite with commas to separate. The guests will receive an invitation from Calendar and Email.
- When finished, touch **DONE** from the top of the screen.

To quickly create an event from the Day or Week view screen, touch and hold an empty spot or an event to open the Option menu, then touch **New event** to enter the event details screen of the time you have previously selected. Or you can also touch the empty spot to select the target area which will turn blue, and tap again to create the new event.

5.1.3 To delete or edit an event

To share, delete or edit an event, touch the event to enter details screen, touch the  icon to share the event to other people by Bluetooth, Email and messaging, etc., touch the  icon to edit the event, and touch the  icon to delete.

5.1.4 Event reminder

If a reminder is set for an event, the upcoming event icon  will appear on the Status bar as a notification when the reminder time arrives.

Touch and drag down the status bar to open the notification panel, touch the event name to view the Calendar notification list.

Touch **Snooze** to turn off all event reminders for 5 minutes.

Touch the **Back** key to keep the reminders pending on the status bar and the notification panel.

Important options activated by touching  from the Calendar main screen:

- **Search** To search in the calendar
- **Refresh** To refresh the calendar
- **Calendars to display** To show or hide the synchronised calendars.
- **Clear events** To clear the selected events
- **Go to** Select to go to specific date.
- **Settings** To set a series of Calendar settings.

5.2 Time.....

Your mobile phone has a built-in clock.

To access this function, touch the Application tab from the Home screen, then touch **Time**.

Time application includes four applications – **World clock**, **Alarm**, **Timer** and **Countdown**.

Touch  to add or set an alarm.

5.2.1 To set an alarm

From the **Time** screen, touch  to enter the **Alarm** screen, touch  to add a new alarm. The following options will show:

- **Time** Touch numbers to set the time for your alarm.
- **Label** Touch to set a name for the alarm.
- **Repeat** Touch to select days you want alarm to work.
- **Vibrate** Select to activate vibration.
- **Ringtone** Touch to select a ringtone for the alarm.

When finished, touch **OK** to confirm.

Touch  to delete the selected alarm.

5.2.2 To adjust alarm settings

Touch  from Alarms screen. The following options will be available under Settings:


- **Alarm in silent mode** Touch to play alarm even when the phone is in silent mode.
- **Snooze duration** Touch to set up the duration of snooze.
- **Volume buttons** Touch to set the alarm sounds: **None, Snooze, Dismiss.**
- **Turn over to activate** Touch to select the turn over behaviour: **Snooze** or **Stop.**

6 Getting connected.....

To connect to the Internet with this phone, you can use GPRS/EDGE/3G networks or Wi-Fi, whichever is most convenient.

6.1 Connecting to the Internet




6.1.1 GPRS/EDGE/3G

The first time you turn on your phone with a SIM card inserted, it will automatically configure network service: GPRS, EDGE or 3G. If the network is not connected, you can touch  on Quick setting bar.

To check the network connection you are using, touch Application tab on the Home screen, then touch **Settings\More...\Mobile networks\Access Point Names** or **Network operators.**


To create a new access point

A new GPRS/EDGE/3G network connection can be added to your phone with the following steps:

- Drag down notification panel and touch  to access **Settings.**
- Touch **More...\Mobile networks\Access Point Names**
- Touch  and select **New APN.**
- Enter the required APN information.
- When finished, touch  and select **Save.**

To activate/deactivate Data roaming



When roaming, you can decide to connect/disconnect to a data service.

- Touch  on Quick settings bar to get to **Settings**.
- Touch **SIM management\Roaming\Data roaming**.
- Touch to select from popup options: **Disable, National Roaming only** and **All Networks**.
- When Data roaming is deactivated, you can still perform data exchange with a Wi-Fi connection (refer to "6.1.2 Wi-Fi").

6.1.2 Wi-Fi


Using Wi-Fi, you can connect to the Internet when your phone is within range of a wireless network. Wi-Fi can be used on the phone even without a SIM card inserted.

To turn Wi-Fi on and connect to a wireless network

- Touch  on Quick settings bar to get to **Settings**.
- Touch the switch  beside Wi-Fi to turn on/off Wi-Fi.
- Touch **Wi-Fi**, detailed information of all detected Wi-Fi networks is displayed in the Wi-Fi networks section.
- Touch a Wi-Fi network to connect to it. If the network you selected is secured, you are required to enter a password or other credentials (contact network operator for details). When finished, touch **Connect**.



To activate notification when a new network is detected

When Wi-Fi is on and the network notification is activated, the Wi-Fi icon will appear on the status bar whenever the phone detects an available wireless network within range. The following steps activate the notification function when Wi-Fi is on:

- Drag down notification panel and touch  to access **Settings**.
- Touch **Wi-Fi**. Then touch and select **Advanced** from Wi-Fi screen.
- Mark/Unmark the **Network notification** checkbox to activate/deactivate this function.

To add a Wi-Fi network

When Wi-Fi is on, you may add new Wi-Fi networks according to your preference.

- Drag down notification panel and touch  to access **Settings**.
- Touch **Wi-Fi**, and then touch .
- Enter the name of the network and any required network information.
- Touch **Save**.

When successfully connected, your phone will be connected automatically the next time you are within range of this network.

To forget a Wi-Fi network

The following steps prevent automatic connections to networks which you no longer wish to use.

- Turn on Wi-Fi, if it's not already on.
- In the Wi-Fi screen, long press the name of the saved network.
- Touch **Forget network** in the dialog that opens.

6.2 Browser.....

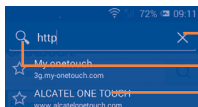


Using Browser, you can enjoy surfing the Web.

To access this function, touch Application tab from the Home screen, then touch **Browser**.

To go to a web page


On Browser screen, touch the URL box at the top, enter the address of the web page, then touch **Go** to confirm.



- Touch to delete all contents
- Touch to search and go to this address
- Touch to go to the suggested website

The URL bar will hide after a few seconds. To show the URL bar, you can touch and slide down the screen.

To set a home page

- Touch  from the Browser screen to display the option menu, touch **Settings\General\Set home page**.
- Choose a page or most visited website as your home page.
- If you choose **Other**, enter the URL of the website you want to set as your home page, touch **OK** to confirm.

6.2.1 Viewing web pages



After opening a website, you can navigate on web pages by sliding your finger on the screen in any direction to locate the information you want to view.

To zoom in/out of a web page

Pinch/Spread your finger on the screen to zoom out/in of the web page.


To quickly zoom into a section of a web page, double touch on the section you want to view. To return to normal zoom level, double touch again.

To find text on a web page

- Touch  from the web page screen, then select **Find on page**.
- Enter the text or phrase you want to find.
- The first word with matching characters will be highlighted on the screen, and subsequent matches will be boxed.
- Touch the up or down arrow to switch to the previous or next matching items.
- When finished, you can touch  or the **Back** key to close the search bar.




Further operations for the text on a web page

You can copy, share or search the text on a web page:


- Touch and hold the text to highlight it.
- Move the two tabs to select the text.
- Touch **SELECT ALL** to select all words in this web page.
- Long press the selected text, **Copy, Share, Find** and **Web Search** will appear on the screen.
- When finished, touch  or the **Back** key to deactivate the mode.

To open new window/switch between windows

Multiple windows can be opened at the same time for your convenience.

- Touch  to open all windows' thumbnails.
- Slide up and down to view all windows, touch one to view it.
- Touch  to open a new window.
- To close a window, touch  on the window you want to close or slide it sideways.

Other options:

- **Refresh** To refresh the current page.
- **Stop** To stop opening the current page.
- **Home page** To get back to the home page you set.
- **Save to bookmarks** To add the current website page as a bookmark.
- **Close** To close all tabs and exit.
- **Save for offline reading** To save the web page for offline reading. You can find it by touching  and then selecting **Bookmarks\History\SAVED PAGES**.
- **Share page** To share the current page with your friends via various ways, like Messaging, Email, Bluetooth, etc.
- **Find on page** To input contents you want to find on the current page.
- **Request desktop site** To enable/disable computer version of websites.

- **Bookmarks/History** To see your bookmarks, browsing history and saved pages.
- **Settings** Touch to make the general settings.
- **Version** To see your version of browser.




Touch the icon on the left of the URL, you can view more information about the current page.

6.2.2 Manage links, history and downloads


To manage a link, phone number or address displayed on a web page

- **Link** Touch the link to open the web page.
Touch and hold the link to open options for further operation, like opening in new window, saving link, copying link URL, etc.
- **Phone number** Touch to call the phone number.
- **Address** Touch to open Google Maps and locate the address.


To view Browser history

- Touch  from the Browser screen.
- Touch **Bookmarks/History**.
- Touch the **History** tab to view browser history.
- Touch **Saved pages** to view the pages you've saved.

To download a web application/view your downloads

Before downloading a web application, you need to enable your phone to install web applications (touch  from the Home screen, touch **Settings\Security**, mark the checkbox of **Unknown sources**, finally touch **OK** to confirm).

To download an item, touch the item or the link you want to download.

To cancel a download, touch the downloaded item from the Notification panel, select the item to be cancelled, and touch  to confirm.


To view items you have downloaded, touch the application **Downloads**.

Manage bookmarks


To bookmark a web page

- Open the web page you want to bookmark.
- Touch and select **Save to bookmarks**, or from the **History** screen, touch the star beside the URL.
- Enter the name and the location if needed and touch **OK** to confirm.

To open a bookmark

- Touch and select **Bookmarks/History**, or touch the  icon to enter the **Bookmarks** screen.
- Touch the bookmark you want to open.
- You can also touch and hold to display the options screen, then touch **Open** or **Open in new window**.

To edit a bookmark

- Touch and select **Bookmarks/History**, or touch the  icon to enter the **Bookmarks** screen.
- Touch and hold the bookmark you want to edit.
- Touch **Edit bookmark**, and input your changes.
- When finished, touch **OK** to confirm.

Long press a bookmark in the bookmark list to view these additional options:

- **Add shortcut to Home** To add a bookmark shortcut to the Home screen.
- **Share link** To share the bookmark.
- **Copy link URL** To copy the bookmark link.
- **Delete bookmark** To delete a bookmark.
- **Set as home page** To set this page as the home page.

6.2.3 Settings

A series of settings are available for your adjustment. To access the Browser settings, touch from the Browser screen, and select **Settings**.

General

- **Set home page** Touch to set your home page.

Privacy & security

- **Clear cache** Touch to clear locally cached content and databases.
- **Clear history** Touch to clear the browser history.
- **Show security warnings** Mark the checkbox to show a warning if there is a problem with a site's security.
- **Accept cookies** Mark to allow sites to save and read cookie data.
- **Clear all cookie data** Touch to clear all browser cookies.
- **Remember form data** Mark the checkbox to remember data in forms for later use.
- **Clear form data** Touch to clear all saved form data.

- **Enable location** Mark the checkbox to allow sites to request access to your location.
- **Clear location access** Touch to clear location access for all websites.

Accessibility

- **Force enable zoom** Mark the checkbox to control a website's zoom as you prefer.
- **Text scaling** Slide to change the size of the text display.
- **Zoom on double-tap** Slide to change the magnification level when double-tapping the page.
- **Minimum font size** Slide to change the minimum font size.

Advanced

- **Set search engine** Touch to select a search engine.
- **Open in background** Mark the checkbox to open new windows behind the current one.
- **Enable JavaScript** Mark the checkbox to enable JavaScript.
- **Allow multiple tabs per app** Mark the checkbox to allow one application to use multiple tabs.
- **Enable plug-ins** Mark the checkbox to enable plug-ins.
- **Website settings** Touch to view advanced settings for individual websites.
- **Open pages in overview** Mark the checkbox to open web pages zoomed out, in an overview.
- **Auto-fit pages** Mark the checkbox to format web pages to fit the screen.
- **Block popup windows** Mark the checkbox to prevent popup windows.
- **Text encoding** Touch to select the character-encoding standard.
- **Reset to default** Touch to clear all browser data and to reset all settings to default.

Bandwidth management


- **Search result preloading** Touch to enable/disable browser to preload search results in the background.
- **Web page preloading** Touch to enable/disable browser to preload the linked web pages in the background.
- **Load images** Mark the checkbox to display images on web pages.

Labs



- **Quick controls** Mark the checkbox to enable quick controls and hide app and URL bars.
- **Full screen** Mark the checkbox to use the full screen mode to hide the status bar.

6.3 Connecting to Bluetooth devices ⁽¹⁾

Bluetooth is a short-range wireless communication technology that you can use to exchange data, or connect to other Bluetooth devices for various uses.



To access this function, drag down notification panel and touch  to access **Settings**. Then touch **Bluetooth**. Your device and other available ones will display on the screen.

To turn on Bluetooth



- Touch  on Quick settings bar to get to **Settings**.
- Touch  to activate/deactivate this function.

⁽¹⁾ You are recommended to use ALCATEL ONETOUCH Bluetooth headsets, which have been tested and proved compatible with phone. You can go to www.alcatelonetouch.com for more information about ALCATEL ONETOUCH Bluetooth headset.

To make your phone more recognisable, you can change your phone name which is visible to others.


- Touch  on Quick settings bar to get to **Settings**.
- Touch **Bluetooth**.
- Touch  and select **Rename phone**.
- Enter a name, and touch **Rename** to confirm.

To make device visible

- Touch  on Quick settings bar to get to **Settings**.
- Touch **Bluetooth**.
- Touch your device to make it visible or invisible.
- Touch  and select **Visibility timeout** to select the visible time.

To pair/connect your phone with a Bluetooth device

To exchange data with another device, you need to turn Bluetooth on and pair your phone with the Bluetooth device with which you want to exchange data.

- Touch  on Quick settings bar to get to **Settings**.
- Touch **Bluetooth**.
- Touch **SEARCH FOR DEVICES**.
- Touch a Bluetooth device you want to be paired with in the list.
- A dialog will pop up, touch **Pair** to confirm.
- If the pairing is successful, your phone will connect with the device.

To disconnect/unpair from a Bluetooth device

- Touch the device name you want to unpair.
- Touch **Unpair** to confirm.

6.4 Connecting to a computer

With the USB cable, you can transfer media files and other files between micro SD card/internal storage and a computer.

Before using MTP or PTP, first mark **USB debugging**.

- Touch **Settings****About phone**, then touch **Build number** 7 times. Then touch **Settings****Developer options****USB debugging**.

To connect/disconnect your phone to/from the computer:

- Use the USB cable to connect the phone to a USB port on your computer. You will receive a notification that the USB is connected.
- If you use mass storage, open the Notification panel and touch **USB connected**, then touch **Mount** in the dialog that opens to confirm that you want to transfer files.
- If you use MTP or PTP, your phone will be automatically connected.

To disconnect (from mass storage):

- Unmount the microSD card on your computer.
- Open the Notification panel and touch **Turn off USB storage**.





For Windows XP or lower operating systems, you should download and install Windows Media Player 11 on your computer.

To locate the data you have transferred or downloaded in the internal storage:

- Touch Application tab from the Home screen to open the applications list.
- Touch **File Manager**.

All data you have downloaded is stored in **File Manager**, where you can view media files (videos, photos, music and others), rename files, install applications on your phone, etc.


To format a microSD card

- Touch  on Quick settings bar to get to **Settings**.
- Touch **Storage**.
- Touch **Format SD card**. On the screen a popup warns you that formatting the microSD card will erase its contents, touch  .

6.5 Sharing your phone's mobile data connection

You can share your phone's mobile data connection with a single computer via a USB cable (USB tethering) or with up to eight devices at once by turning your phone into a portable Wi-Fi hotspot.

To turn on USB tethering or Portable Wi-Fi hotspot

- Touch  on Quick settings bar to get to **Settings**.
- Touch **More...****Tethering & portable hotspot**.
- Mark the checkbox of **USB tethering** or turn on **Wi-Fi hotspot** to activate this function.



These functions may incur additional network charges from your network operator. Extra fees may also be charged in roaming areas. You can check data usage by touching **Settings****Data usage**.

To share your phone's data connection via USB

Use the USB cable that along with your phone to connect the phone to a USB port on your computer.


- Touch  on Quick settings bar to get to **Settings**.
- Touch **More...****Tethering & portable hotspot**.
- Mark\Unmark the checkbox of **USB tethering** to activate/deactivate this function.

To share your phone's data connection as a portable Wi-Fi hotspot

- Touch  on Quick settings bar to get to **Settings**.


- Touch **More...**\Tethering & portable hotspot.
- Touch the switch  beside **Wi-Fi hotspot** to activate/deactivate this function.

To share your phone's data connection via Bluetooth

- Touch  on Quick settings bar to get to **Settings**.
- Touch **More... > Tethering & portable hotspot**.
- Mark/Unmark the check box of **Bluetooth tethering** to activate/deactivate this function.

To rename or secure your portable hotspot



When Portable Wi-Fi hotspot is activated, you can change the name of your phone's Wi-Fi network (SSID) and secure its Wi-Fi network.

- Touch  on Quick settings bar to get to **Settings**.
- Touch **More...**\Tethering & portable hotspot\Wi-Fi hotspot.
- Touch **Set up Wi-Fi hotspot** to change the network SSID or set your network security.
- Touch **Save**.

6.6 Connecting to virtual private networks

Virtual private networks (VPNs) allow you to connect to the resources inside a secured local network from outside that network. VPNs are commonly deployed by corporations, schools, and other institutions so that their users can access local network resources when not inside that network, or when connected to a wireless network.

To add a VPN

- Touch  on Quick settings bar to get to **Settings**.
- Touch **More...**\VPN settings and then touch .
- In the screen that opens, follow the instructions from your network administrator to configure each component of the VPN settings.
- Touch **Save**.


The VPN is added to the list on the VPN settings screen.



Before adding a VPN, you should set a lock screen pattern, PIN code or password for your phone.

To connect/disconnect to a VPN

To connect to a VPN:


- Touch  on Quick settings bar to get to **Settings**.
- Touch **More...**\VPN settings.
- VPNs you have added are listed; touch the VPN you want to connect with.
- In the dialog that opens, enter any requested credentials and touch **Connect**.

To disconnect:

- Open the Notification panel and touch the resulting notification for the VPN disconnection.

To edit/delete a VPN

To edit a VPN:

- Touch  on Quick settings bar to get to **Settings**.
- Touch **More...**\VPN settings.
- VPNs you have added are listed; touch & hold the VPN you want to edit.
- Touch **Edit profile**.
- After finishing, touch **Save**.

To delete:

- Touch and hold the VPN you want to delete, in the dialog that opens, touch **Delete profile**.


7 Google Play Store (1).....



Google Play Store is an online software store, where you can download and install applications and games to your Android powered phone.

To open Google Play Store:

- Touch **Play Store** from extended screen.
- For the first time you access Google Play Store, a screen with terms of service pops up for your attention, touch **Accept** to continue.

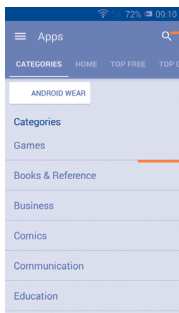
Touch , then select **Help** to enter the Google Play Store help page for more information on this function.

To access this function, touch the Application tab from the Home screen and then touch **Camera**.

7.1 Locate the item you want to download and install

Google Play Store home page provides several ways to find applications. It show applications and games in categorised listings.

Touch  and select **My apps** to see all your downloads.



Touch to search in **Google Play Store**.


Slide up and down to see all categories.

Touch a category on Google Play Store screen to browse its contents. You can also select a subcategory if there is any. Within each category you can select to view items sorted by Top free, Top new free, Trending, etc

Touch the Google Play Store icon  on the top left of the screen or touch **Back** key to return to the previous screen.

7.2 Download and install

To download & install:

- Navigate to the item you want to download, and enter the details screen from which you can read its description, overall rating or comments, view developer's information, etc.
- Touch **Install** to preview the functions and data the application can access on your phone if you install it.
- Touch **Accept & download**.
- The progress of the download will show on the details screen, touch **x** to stop downloading the item. You can also access this screen through Notification panel.
- After download and installation have finished, you will see a notification icon  on the status bar.



Be especially cautious with applications that have access to many functions or to a significant amount of your data. Once you accept, you are responsible for the results of using this item on your phone.

(1) Depending on your country and operator.

To open the application you have downloaded:

- On the Google Play Store screen, touch and select **My apps**.
- Touch the installed application in the list, then touch **Open**.

To buy an application ⁽¹⁾

On **Google Play Store**, some applications are labelled as free, while some of them are to be paid for before downloading and installing.

- Touch the application you want to buy.
- Touch the price on the up-right of the screen to preview the functions and data the application can access on your phone if you install it.
- Touch **Continue** to confirm.
- When making your first purchase, you are required to input your credit card information and to log into the Google payment and billing service.
- If your account has multiple credit card accounts, select one to proceed.
- Select the Terms of Service link and read the document. When finished, touch **Back** key.
- Mark the checkbox if you agree with the Terms of Service.
- Touch **Buy now** at the bottom of the screen.

When finished, Android downloads the application.

⁽¹⁾ Google Paid applications may not be available to users in some countries.

To request a refund

If you are not satisfied with the application, you can ask for a refund within 15 minutes of the purchase. Your credit card will not be charged and the application will be removed. If you change your mind, you can install the application again, but you will not be able to request a refund.

- Touch and select **My apps** from the Google Play Store screen.
- Touch the application that you want to uninstall and refund.
- Touch **Refund** to uninstall the application and refund. If the button becomes **Uninstall**, your trial period has expired.
- In the survey form, select the answer that best matches your reason, and touch **OK**.

7.3 Manage your downloads

After you downloaded and installed an application, the following further operations are available for your selection.

View

On the Google Play Store screen, touch and select **My apps**.

Uninstall

On the Google Play Store screen, touch and select **My apps**. Touch the application you want to uninstall to enter the details screen, touch **Uninstall**, and finally touch **OK** to confirm.

Refund

On the Google Play Store screen, touch and select **My apps**. Touch the application you want to uninstall for a refund, touch **Refund**, and finally touch **OK** to confirm.

Update notification

On the Google Play Store screen, touch and select **My apps**. Touch and select **Settings\Notifications** to enable update notification.

Auto update

To auto update all installed applications, touch and select **My apps** from Google Play Store screen. Touch and select **Settings\Auto-update apps** to enable this function.

To auto update one specific application, mark the checkbox of **Allow automatic updating** from the details screen,

Rate and review

Open the details screen for an application, touch the stars  under **RATE & REVIEW** to award and input comments, touch **OK** to confirm.

Flag

You can report an inappropriate application to Google Play Store by flagging it. Open the details screen for the application, scroll to the bottom and touch **Flag as inappropriate**, enter the reason and finally touch **Submit**.

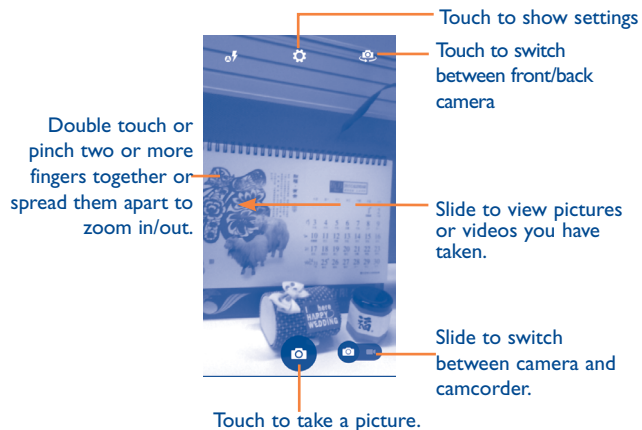
8 Multimedia applications.....

8.1 Camera



Your mobile phone is fitted with a Camera for taking photos and shooting videos.




Before using the Camera, please be sure to open the protective lens cover to avoid it affecting your picture quality.



To take a picture

The screen acts as the viewfinder. First position the object or landscape in the viewfinder, touch the  icon to take the picture which will be automatically saved.


To shoot a video

First position the object or landscape in the viewfinder, and touch the  icon to start recording. Touch  to pause recording, touch  or press Back key to save the video. or press the **Back** key to save the video.


Further operations when viewing a picture/video you have taken

- Touch the icons below the screen to share and edit the photo or video you have taken.
- Touch the photo icon to access **Gallery**.

8.1.1 Settings in framing mode

Before taking a photo/shooting a video, touch the  icon to adjust a number of settings in framing mode.

Back camera shooting mode

Touch  to access camera settings and below options will display for you to choose from:

- **HDR** Touch to turn on HDR (High-Dynamic Range) function. HDR photos can better reflect the visual effects people have in the real environment by synthesizing images under different exposure time. The phone will then automatically save the original photos and HDR ones.

- **Panorama**

Touch to turn on panorama function. Press the **Shutter** button or the **Volume** key to start taking panoramic photo and move the phone towards your capture direction and overlap the two lines. Once the nine slots below the screen are filled, the phone will automatically save the photo.

- **Night**

Touch to turn on/off night mode.

- **Filter**

Touch to switch to Filter mode with various photographic effect to choose, such as Sepia, Fisheye, Cartoon, and etc.

- **QR Scan**

Touch to scan the QR code.

- **Shutter sound**

Touch to turn on/off shutter sound.

- **Advanced**

Touch to set **Full screen, Anti-branding, Picture size, Timer, ISO, Exposure**.

Camcorder settings


- **Video quality**

Touch to set Video quality as **Superfine, Fine** or **Normal**.

- **Sound recording**

Touch to turn on/off sound recording.

Front camera shooting mode

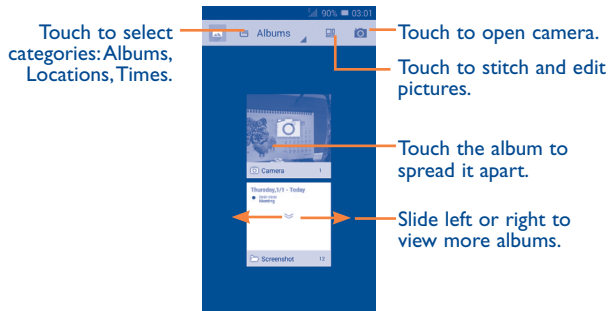
Switch to front camera, touch  to access camera settings and the following options will display you to choose from:

- **Night** Touch to turn on/off night mode.
- **Beauty4** Touch to turn on Beauty4 function: once four photos taken, the phone will automatically synthesize and save them as one picture.
- **Filter** Touch to switch to Filter mode with various photographic effect to choose, such as Sepia, Fisheye, Cartoon, and etc.

8.2 Gallery

The Gallery acts as a media player for you to view photos and playback videos. In addition, a set of further operations to pictures and videos are available for your choice.

To access this function, touch the Application tab from the Home screen, then touch **Gallery**.



To view a picture/play a video

Pictures and videos are displayed by albums in the **Gallery**.

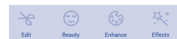
- Touch an album and all pictures or videos will spread the screen.
- Touch the picture/video directly to view or play it.
- Slide left/right to view previous or next pictures/videos.

Working with pictures


You can work with pictures by editing them, sharing them with friends, setting them as a contact photo or wallpaper, etc.

Locate the picture you want to work on, touch the picture from full-screen picture view. Slide the icon bar below left and right to select one, touch icon to share the picture, touch icon above and confirm **OK** to delete the picture.

Touch  from the full-screen picture view edit a picture.






Edit	Touch to Crop, Rotate or Sharpen the picture.
Beauty	Touch to beautify the picture by Dermabrasion, Whitening or Complexion .
Enhance	Touch to open Toning color and Exposure .
Effect	Touch to set effect of Lomo, Portrait, Fashion or Art .
Frame	Touch to choose frame.
Mosaics	Touch to add mosaics to the picture.
Text	Touch to edit words onto the picture.
Bokeh	Touch to set Circle bokeh or Line bokeh .

 After activating the crop mode, the cropping square appears in the middle of the picture. Select the portion to crop, touch to confirm and Save, touch icon to exit without saving.

Batch operation


This provides a multi-select function, so that you can work with pictures/videos in batches.

Open the main Gallery window or an album, touch  and select **Select album** to activate batch operation mode (you can also touch and hold one album/picture), then touch albums/pictures you want to work on. Touch the  icon to delete selected ones. Touch  to share selected ones.

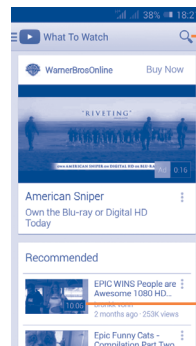
8.3 YouTube




YouTube is an online video-sharing service where the user can download, share and view videos. It supports a streaming function that allows you to start watching videos almost as soon as they begin downloading from the Internet.


 As an online video service, your phone must have a network connection to access YouTube.

All videos in YouTube are grouped into several categories, like Most Popular, Most Discussed, Featured Videos, etc.



 Touch to search for a video.

 Touch to play the video and to show more information.

By touching  from the YouTube screen, you can set General settings and Search settings for YouTube. For details about these features, visit the YouTube website: www.YouTube.com.

8.3.1 Watch videos

Touch a video to play it. In the Playing screen, you can view information and video comments, and also browse links to related videos. You can also rate, share, label as favourite, create a new playlist, etc from this screen. To exit the video playing screen, touch **Back** key to return to the video list.

8.4 Music

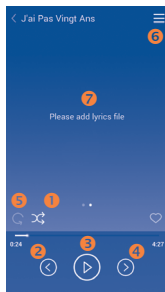


Using this menu, you can play music files stored on the microSD card or the phone storage. Music files can be downloaded from a computer the phone using a USB cable.

You will find four categories in which all songs are classified: **ALL, Favourite, Folder, Artist, Album, Genre, Recent add and Plalist.** Slide left and right to view all. Touch **Shuffle all** to shuffle all songs.

8.4.1 Playing music

Touch a song to play it.



- 1 Touch to play the current playlist in shuffle mode (tracks are played in random order).
- 2 Touch to skip to the previous track in the album, playlist, or shuffle.
- 3 Touch to pause/resume playback.
- 4 Touch to skip to the next track in the album, playlist, or shuffle.
- 5 Touch to select repeat mode: Repeating all songs, Repeating current song, or Repeat is off.
- 6 Touch to show the displayed song.
- 7 Touch to hide options.



While playing songs with Play Music, the operation of pause, play or skip is still available even if the screen is locked.

Adjust sound effects


Touch and select **Sound effects** from the playing screen to enable and adjust sound effects.

8.4.2 Working with playlists

Playlists allow you to conveniently organise all songs stored in the SD card or phone storage.

You can create a new playlist, add a song to the list, and delete or rename a playlist.

To create a playlist

Touch **Playlists** from the Playlists screen, touch  and enter the name and finally touch **Save**.

To delete a playlist

Touch and hold a playlist to show the menu, then touch **Delete**.

To rename a playlist

Touch and hold a playlist to show the menu, then touch **Rename**. When finished, touch **Save** to confirm.

8.5 Video Player



Video is a small built-in video player that lists all your videos.

Touch an item from the list to play. While playing, use Pause, Forward and Back functional icons as required, touch a point on the timeline to jump to and play from.

9

Google Maps



9.1 Get My Location

9.1.1 Choose a data source to decide My Location

Drag down notification panel and touch  to access **Settings**, touch **Location**

Mark the checkbox of **Access to my location** and **Google's location service**.

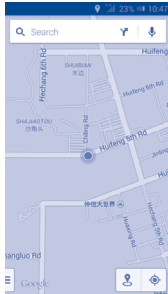
Turn on **GPS satellites** to set GPS as My Location data source.

9.1.2 Open Google Maps and view My Location

Touch **Maps** from the Home screen.

Touch  icon on the map to view **My Location**.


The map will then centre on a blue dot with a blue circle around. Your actual position is within the blue circle.



To move the map, drag the map with your finger.

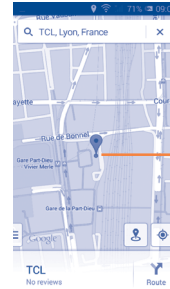
To zoom in and out of a map, pinch or spread your fingers, or you can also zoom in by double-tapping a location on screen.

9.2 Search for a location

While viewing a map, touch the search icon  to activate the search function.

In the search box, enter an address, a city or a local business.

Touch the search icon to search, and in a while your search results will appear on the map as red dots. You can touch one to show a label.



Touch to show more information

9.3 Star a location

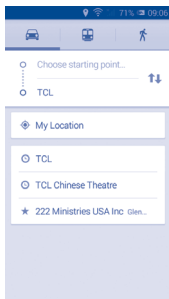
Just like bookmarking a web address on the Internet, you can star any position on the map for later use.

9.3.1 How to star (or unstar) a location

Touch a location on a map.

Touch the address rectangle which then opens.

Touch the gray star at the top of the screen to star the location. (Or touch a gold star to unstar that location.)



9.3.2 View a list of starred items

Touch at the upper-left corner; and touch **Saved Places**.

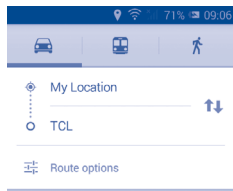
The list of your starred items and their addresses opens.


Touch a location in the list to view it.


9.4 Get driving, public transportation or walking directions

9.4.1 Get suggested routes for your trip

Touch  from the Maps screen.



- Touch the enter bar or the triangle to edit your start point by one of the following methods: entering an address, using My Location, selecting a start point on a map, selecting a starred item, selecting an address from your contacts or using search history.
- Do the same for your end point.
- To reverse directions, touch .
- A couple of suggested routes will appear in a list. Touch any routes to view their respective detailed directions.

To get reverse directions for a route you've already made, simply open that route's directions window and touch . No need to enter your start point and end point again.

9.4.2 Preview suggested routes and decide on a route more preferable or feasible to you

You can preview each turn in your route in Navigation, Satellite, and other views.

- Touch a left or right arrow to preview the next or previous leg of your route.

- You can view turn-by-turn directions, estimated distance and possible arrival time in a list by touching **DIRECTIONS LIST**, touch **Back** key or **MAP VIEW** to return to previous view.

When selecting a more preferable or feasible route, distance and time will be the two most important factors for your evaluation. Distance and estimated time will be displayed at the top of the directions screen.


9.4.3 Search for locations along your route

Please refer to "9.2 Search for a location" for detailed information.




9.5 Arrangement of Layers

Layers allow you to view locations and additional information overlaid on the map. You can add multiple layers or remove only certain layers so you control exactly what information you want visible on the map at one time.

9.5.1 To view multiple layers

Touch icon  from Maps screen. All available layers are listed (like Traffic, Satellite, etc), select one to view.

9.5.2 To clear the map

After you get directions or search  on a map, you can clear the markers/layers that have been drawn: touch  and **Settings**, select **Maps history**, then touch .

10 Others.....

10.1 Calculator.....

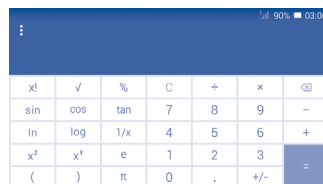
With Calculator, you can solve many mathematical problems.

To access this function, touch  from Home screen and then touch .

There are two panels available: Basic panel and Advanced panel.

To switch between panels, operate as below:

- Firstly choose **Settings/Display/Auto-rotate screen**, put phone in Horizontal screen, switch to advanced panel.
- In Vertical screen, switch to basic panel.



Enter a number and the arithmetic operation to be performed, enter the second number, then touch "=" to display the result. Touch  to delete digits one by one, touch and hold  to delete all at one time.

When some numbers or operations have been entered, touch and hold the entering bar to open a menu offering these further operations:

- **Cut** To cut selected text
- **Copy** To copy selected text
- **Paste** ⁽¹⁾ To paste what you have previously copied to the entering bar

10.2 File Manager

To access this function, touch  from Home screen and then touch .

File Manager works with both external SD card and internal storage.

File Manager displays all data stored on both microSD card and internal storage, including applications, media files such as videos, pictures or audios you have captured; other data transferred via Bluetooth, USB cable, etc.

When you download an application from a PC to your microSD card, you can locate the application on File Manager, then touch it to install it in your phone.

File Manager allows you to perform and be really efficient with the following common operations: create a (sub) folder, open a folder/file, view, rename, move, copy, delete, play, share, etc.

⁽¹⁾ Option will not appear unless copy or cut operation has been made.

10.3 Sound Recorder


To access this function, touch  from Home screen and then touch .

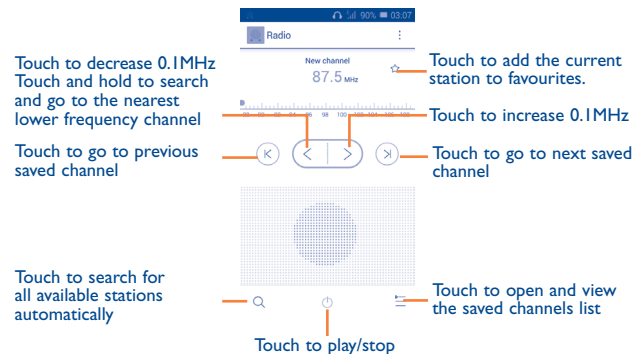
Sound Recorder allows you to record voice/sound for seconds/hours.

10.4 Radio

Your phone is equipped with a radio ⁽¹⁾. You can use the application as a traditional radio with saved channels or with parallel visual information related to the radio programme on the display if you tune to stations that offer a visual radio service.

To access this function, touch  from Home screen and then touch .

 To use it, you must plug in your headset, which works as an antenna connected with your phone.



⁽¹⁾ The quality of the radio depends on the coverage of the radio station in that particular area.

Available options:

- **Save channel** Save the current tuned station to the channels list.
- **Audio mode** Listen to the radio using the loudspeaker or headset.
- **Delete** Delete the channel
- **Enter frequency** Enter the frequency manually.
- **Station info** Touch to view the station information.
- **Exit** Turn off the radio.

10.5 Setup Wizard



To access this function, touch  from Home screen and then touch .

Setup Wizard helps set up your phone in multiple ways: language, input method, mobile data connection, account setup and synchronisation etc. This will also be performed the first time you power on your phone.

10.6 Other applications ⁽¹⁾

The previous applications in this section are preinstalled on your phone. To read a brief introduction of the preinstalled 3rd party applications, please refer to the leaflet provided with the phone. You can also download thousands of 3rd party applications by going to Google Play Store on your phone.

⁽¹⁾ Application availability depends on country and operator.

Settings.....

Drag down notification panel and touch  to access **Settings**.

11.1 Wireless & networks

11.1.1 SIM management ⁽¹⁾

The SIM management option only exists under Dual SIM status.

11.1.2 Wi-Fi

Using Wi-Fi you can now surf the Internet without using your SIM card whenever you are in range of a wireless network. The only thing you have to do is to enter the **Wi-Fi** screen and configure an access point to connect your phone to the wireless network.

For detailed instructions on using Wi-Fi, please refer to "**6.1.2 Wi-Fi**".

11.1.3 Bluetooth

Bluetooth allows your phone to exchange data (videos, images, music, etc.) within a small range with another Bluetooth supported device (phone, computer, printer, headset, car kit, etc.).

For more information on Bluetooth, please refer to "**6.3 Connecting to Bluetooth devices**".

11.1.4 Call settings

Call settings allows you to set the voice call, video call, and other related settings. You can refer to "**3.1.6 Call settings**" for more information.

⁽¹⁾ 4027D only.

11.1.5 Data usage

To enable/disable mobile data, touch the  switch.

By marking the checkbox of **Set mobile data limit**, you can then drag the limit line and the warning line according to your preferred limits. Your mobile data connection will be disabled when the specified limit is reached. You can also choose a data usage cycle to view the statistics and related applications of your phone's data use.

Touch , and you can view more settings related to your data usage.



Data usage is measured by your phone, and your carrier may count differently. Please consider using a conservative limit.

11.1.6 Aeroplane mode

Mark the checkbox of **Aeroplane mode** to simultaneously disable all wireless connections including Wi-Fi, Bluetooth and more.

11.1.7 Default SMS app

Touch to select SMS for Hangouts, Messaging, Smart Suite and Clarosync.

11.1.8 Tethering & portable hotspot

This function allows you to share your phone's mobile data connection via USB or as a portable Wi-Fi access point (Please refer to "**6.5 Sharing your phone's mobile data connection**").

11.1.9 VPN settings

A mobile virtual private network (mobile VPN or mVPN) provides mobile devices with access to network resources and software applications on their home network, when they connect via other wireless or wired networks. Mobile VPNs are used in environments where workers need to keep application sessions open at all times, throughout the working day, as the user connects via various wireless networks, encounters gaps in coverage, or suspend-and-resumes their devices to preserve battery life. A conventional VPN cannot survive such events because the network tunnel is disrupted, causing applications to disconnect, time out, fail, or even the computing device itself to crash.

For more information on VPN, please refer to "**6.6 Connecting to virtual private networks**".

11.1.10 Mobile networks

• Data connection

Touch to turn on/off data connection.

• 3G service

Touch to enable 3G service.

• Preferred

Touch to view/edit/delete preferences.

• Access Point Names

You can select your preferred network with this menu.

• Network operators

You can select a network operator.

11.1.11 USB Internet

Touch to share your PC internet via a USB cable when connected to PC.

11.2 Device

11.2.1 Gestures

Mark the checkbox to enable the following gestures: **Turn over to mute**, **Turn over to reject**, **Turn over to activate**, **Shake to switch music**.

11.2.2 Sound

Use the Sound settings to configure volume and ringtones for different events and environments.

Volume

Volume settings can make user adjust the volume of ringtone, notifications, music, video and alarms, etc., or directly set the incoming calls to vibration or silence.

- **Vibrate** Marking the checkbox makes your phone vibrate when receiving incoming calls.
- **Silent mode** Marking the checkbox to silences phone for incoming calls.
- **Ringtone, notifications, system** Slide to adjust the volume of ringtones, notifications and system sounds.
- **Music, video, games and other media** Slide to adjust the volume of music, video, games, etc.
- **Alarms** Slide to adjust the alarm volume.

RINGTONE & NOTIFICATIONS

- **Phone ringtone** Touch to select your default incoming call ringtone.
- **Growing up ringtone** Mark the check box to enable crescendo ringing.
- **Notification sound** Touch to select your default notification ringtone.

System

- **Dial pad touch tones** Mark the checkbox to enable playing tones when using dial pad.
- **Audible selection** Mark the checkbox to enable playing sound when making screen selection.
- **Screen lock sound** Mark the checkbox to enable sounds to play when locking and unlocking the screen.
- **Haptic feedback** Mark the checkbox to activate vibration when pressing soft keys and on certain UI interactions.
- **Power on ringtone** Set your default power on ringtone.
- **Power off ringtone** Set your default power off ringtone.

11.2.3 Display

- **Wallpaper** Touch to set the wallpaper.
- **Brightness** Touch to adjust the brightness of the screen.
- **Auto-rotate screen** Mark the checkbox to select whether or not the screen rotates automatically.
- **Sleep** Touch to set screen timeout.
- **Daydream** Touch to set the daydream.
- **Font size** Touch to set the font size.

11.2.4 Lock settings

- **Select screen lock** Touch to choose screen lock.
- **Lock options** Touch to customise widgets on lock screen.
- **Change lock wallpaper** Touch to set wallpaper of lock screen.
- **Owner information** Touch to input owner information which will display on the lock screen.

11.2.5 Status bar

Touch the copy  to reveal all 3rd party application notifications which will then be shown on the top left of the status bar.

You can also touch some app icons to deactivate their notifications in the status bar.

11.2.6 Storage

Use these settings to manage your microSD card by monitoring the total and available space on your phone and your microSD card.



If a warning message comes up saying that phone memory is limited, you are required to free up space by deleting some unwanted applications, downloaded files, etc.

11.2.7 Battery management

In the battery management screen you can view battery usage data since you last connected the phone to a power source. The screen also shows your battery status and how long it has been used since last charging. Touch one category to reveal its specific power consumption.

You can adjust power use by adjusting screen brightness or screen timeout in the Display screen.

11.2.8 Applications

You use the Applications settings to view details about the applications installed on your phone, to manage their data and force them to stop, and to set whether you want to permit installation of applications that you obtain from websites and emails.

11.3 Personal

11.3.1 Location access

GPS satellites

Check to use your phone's global positioning system (GPS) satellite receiver to pinpoint your location within an accuracy as close as several meters ("street level"). The process of accessing the GPS satellite and setting your phone's precise location for the first time will require up to 5 minutes. You will need to stand in a place with a clear view of the sky and avoid moving. After this, GPS will only need 20-40 seconds to identify your precise location.

11.3.2 Security

Encrypt phone

You can encrypt your accounts, settings, downloaded apps and their data, media and other files by touching Encrypt phone.

Guest mode

Touch to lock applications to protect your privacy.

Find Me Back

Turn on the copy to activate this function. It will protect your privacy in case of theft or loss.

Set up SIM card lock

Choose a SIM card you want to configure. Mark the checkbox of **Lock SIM card** to lock the SIM card with a PIN code.

Touch **Change SIM PIN** to change the PIN code.

Make passwords visible

Mark the checkbox to show passwords as you type.

Device administrators

Touch to view or deactivate device administrators.

Unknown sources

Mark the checkbox to permit installation of applications that you obtain from websites, emails, or other locations other than Google Play Store.

To protect your phone and personal data, download applications only from trusted sources, such as Google Play Store.

Verify apps

Mark the checkbox to prevent or warn you before installing apps which might cause harm.

Storage type

Software only.

Trusted credentials

Touch to display trusted CA certificates.

Install from Memory

Touch to install encrypted certificates from Downloads or Internal storage.

Clear credentials

Touch to remove all credentials.

11.3.3 Language & input

Use the Language & input settings to select the language for the text on your phone and for configuring the onscreen keyboard. You can also configure voice input settings and the pointer speed.

Language

Touch to select the language and the region you want.


Spell checker

Mark the checkbox to enable the system to show suggested words.

User dictionary

Touch to open a list of the words you've added to the dictionary. Touch a word to edit or delete it. Touch the add button (+) to add a word.

Default

Touch to select a default input method. Touch **Configure input methods** to show all input methods. Touch the settings icon  to configure a certain input method.

Android keyboard

The Android keyboard settings apply to the onscreen keyboard that is included with your phone. The correction and capitalisation features affect only the English version of the keyboard. Available options are as follows:

- **Input languages**

Touch to set input language.

- **Auto-capitalisation**

Mark the checkbox to have the onscreen keyboard automatically capitalise the first letter of the first word after a period, the first word in a text field, and each word in name fields.

- **Vibrate on keypress**

Mark the checkbox to have the phone vibrate briefly each time you touch a key on the onscreen keyboard.

- **Sound on keypress**

Mark the checkbox to play a brief sound each time you touch a key on the onscreen keyboard.

- **Popup on keypress**

Mark the checkbox to pop up the key that you touched.

- **Voice input key**

Mark the checkbox to turn on the voice input key.

- **Personal dictionary**

Touch to open a list of the words you've added to the dictionary. Touch a word to edit or delete it. Touch the add button (+) to add a word.

- **Add-on dictionaries**

Touch to select the installed languages that you want to disable.

- **Block offensive words**

Mark the checkbox to block offensive words.

- **Auto correction**

Touch to turn on/off auto correction, or you can also adjust the sensitivity of correction.

- **Show correction suggestions**

Touch to show or not the correction suggestions while typing.

- **Next word prediction**

Mark the checkbox to pop up word prediction.

- **Advanced settings**


Touch to view more advanced settings for android keyboard, such as **Key popup dismiss delay**, **Suggest Contact name**, and etc.

- **Voice search**

Touch to view settings about voice search, such as Language, Speech output, etc.

- **Text-to-speech settings**

- **Preferred engine**

Touch to choose a preferred text-to-speech engine, touch the settings icon  to show more choices for each engine.

- **Speech rate**

Touch to open a dialog where you can select how quickly you want the synthesizer to speak.

- **Listen to an example**

Touch to play a brief sample of the speech synthesizer, using your current settings.

- **Pointer speed**

Touch to open a dialog where you can change the pointer speed, touch **OK** to confirm.

11.3.4 Back up and reset

Back up my data

Mark the checkbox to back up your phone's settings and other application data to Google servers, with your Google account. If you replace your phone, the settings and data you've backed up are restored onto the new phone for the first time you sign in with your Google account. If you mark this option, a wide variety of settings and data are backed up, including your Wi-Fi passwords, bookmarks, a list of the applications you've installed, the words you've added to the dictionary used by the onscreen keyboard, and most of the settings that you configure with the Settings application. If you unmark this option, you stop backing up your settings, and any existing backups are deleted from Google Servers.

Back up account

Touch to back up your account.

Automatic restore

Mark the checkbox to restore your backed up settings or other data when you reinstall an application.

DRM reset

Touch to select delete all DRM licenses.

Factory data reset

Phone reset will erase all of your personal data from internal phone storage, including information about your Google account, any other accounts, your system and application settings, and any downloaded applications. Resetting the phone does not erase any system software updates you've downloaded or any files on your microSD card, such as music or photos. If you mark the checkbox - Reserve the content of Phone storage before touching **Reset phone**, any files stored on your phone's storage will not be erased. If you reset the phone in this way, you're prompted to re-enter the same kind of information as when you first started Android.

When you are unable to power on your phone, there is another way to perform a factory data reset by using hardware keys. Press the **Volume up** key and the **power** key at same time until the screen lights up.

11.4 Accounts

Use these settings to add, remove, and manage your email and other supported accounts. You can also use them to control details of the ways applications send, receive, and synchronise data; if this is according to their own schedules; and whether all applications can synchronise user data automatically.

11.4.1 Add account

Touch to add an account for a selected app.

11.5 System

11.5.1 Date & time

Use Date & time settings to customise your preferences for how date and time are displayed.

Automatic date & time

Touch to select Use network/GPS provided time or Off.

Mark the checkbox to use network-provided time or use GPS provided time.

Automatic time zone

Mark the checkbox to use the network-provided time zone. Or unmark to set all values manually.

Set date

Touch to open a dialog where you can manually set the phone's date.

Set time

Touch to open a dialog where you can manually set the phone's time.

Select time zone

Touch to open a dialog where you can set the phone's time zone.

Use 24-hour format

Mark the checkbox to display the time using 24-hour clock format.

Select date format

Touch to open a dialog where you can select the format for displaying dates.

11.5.2 Scheduled power on & off

Touch to set the power on & off time for every day or specified days.

11.5.3 Accessibility

Accessibility settings can be used to configure any accessibility plug-ins you have installed on your phone.

TalkBack

Touch to turn on/off TalkBack.

Magnification

Touch to turn on/off and to activate/deactivate the zoom in/out function by triple-tapping the screen.

Large text

Mark the checkbox to enlarge the screen text.

Power button ends call

Mark the checkbox to end a call by pressing Power key during the call.

Auto-rotate screen

Mark the checkbox to rotate screen automatically.

Speak passwords

Mark the checkbox to speak passwords while typing.

Accessibility

Touch to turn on/off to enable/disable accessibility features.

Text-to-speech output

Touch to open Text-to-speech setting options.

Long press delay

Touch to adjust the duration of long press delay. This function enables your phone to differentiate between touch and long press, which may avoid incorrect operations.

Quick boot

Mark the checkbox to activate quick boot.

11.5.4 Developer options

To access this function, touch **Settings** \ **About phone**, then touch **Build number** 7 times. Now **Development** is available.

The Developer options screen contains settings that are useful for developing Android applications. For full information, including documentation of the Android applications and development tools, see the Android developer website (<http://developer.android.com>).

Take bug report

Touch to select to collect information about your current device state and send as an email message.

Desktop backup password

Touch to set/change/remove desktop full backup password.

Stay awake

Mark the checkbox to prevent the screen from dimming and locking when the phone is connected to a charger or to a USB device that provides power. Don't use this setting with a static image on the phone for long periods of time, or the screen may be marked with that image.

Select runtime

Touch to set runtime.

Enable Bluetooth HCI snoop log

Mark the checkbox to capture all HCI packets in a file.

Process stats

Touch to view the statistics about application running process.

Revoke USB debugging authorisations

Touch to revoke/ activate access to USB debugging from all computers you authorised.

USB debugging

Mark the checkbox to permit debugging tools on a computer to communicate with your phone via a USB connection.

Power menu bug report

Mark the checkbox to select to include option in power menu for submitting a bug report.

Allow mock locations

Mark the checkbox to permit a development tool on a computer to control where the phone believes it is located, rather than using the phone's own internal tools for this purpose.

Select debug app

Touch to select debug app.

Wait for debugger

Mark the checkbox to wait for a debugger to attach before executing.

Verify apps over USB

Mark the checkbox to check apps over USB.

Show touches

Mark the checkbox to show visual feedback for touches.

Pointer location

Mark the checkbox to show current touch data.

Show surface updates

Mark the checkbox to show flash entire window surfaces when they update.

Show layout bounds

Mark the checkbox to show clip bounds, margins, etc.

Force RTL layout direction

Mark the checkbox to change the screen layout direction to RTL.

Window animation scale

Touch to adjust the animation scale for your window.

Transition animation scale

Touch to adjust the animation scale while performing transition.

Animator duration scale

Touch to adjust the animation duration scale.

Simulate secondary displays

Touch to select your preferred simulate secondary display.

Force GPU rendering

Mark the checkbox to forcibly use 2D hardware acceleration in applications.

Show GPU view updates

Mark the checkbox to show GPU view updates.

Force 4x MSAA

Mark the checkbox to enable 4x MSAA.

Disable HW overlays

Mark the checkbox to select to always use GPU for screen compositing.

Strict mode enabled

Mark the checkbox to enable strict mode. After enabled, the screen will flash when applications do long operations on the main thread.

Show CPU usage

Mark the checkbox to show current CPU usage.

Profile GPU rendering

Mark the checkbox to use 2D hardware acceleration in applications.

Enable OpenGL traces

Touch to adjust OpenGL traces.

Don't keep activities

Mark the checkbox to destroy all activities as soon as you leave.

Background process limit

Touch to change the limit for background processes.

Show all ANRs

Mark the checkbox to show "Application Not Responding" dialog for background applications.

11.5.5 Regulatory & Safety

Touch to view information of the product model, manufacture name, IMEI number and some certification logos or text.

11.5.6 About phone

This contains information on items ranging from legal information, model number, firmware version, baseband version, kernel version, build number etc. related to the following:

System updates

Touch to check for system updates.

System updates(storage)

Touch to check for system updates (storage).

Status

This contains Battery status, Battery level, My phone number, Network, Signal strength, etc.

Legal information

Touch to view legal information.

You can learn more information about the phone such as its model number, firmware version, baseband version, kernel version and build number.

12 Making the most of your phone

You can download software upgrades for free from the website (www.alcatelonetouch.com).

12.1 Smart Suite

Smart Suite includes:

- **Contacts**

It allows you to back up contact entries so that you don't have to worry about losing, breaking, switching phones or changing service providers.

- **Messages**

It frees you from painstakingly inputting text on the keypads. All of your messages are easily accessible and well-organised.

- **Calendar**

It allows you to sync events freely between your phone and Outlook and create and edit new events from a PC.

- **Photos**

It allows you to easily import photos from a PC or the handset and organise them in different albums for better management.

- **Videos**

It allows you to insert video files from a PC for playback and then upload to a handset folder.

- **Music**

It allows you to quickly search for your favourites in a PC, manage the ultimate Library, and enjoy the easiest digital jukebox in your own mobile way.

- **Application**

It allows you to import downloaded mobile applications and have them installed into your handset upon synchronisation.

- **Backup**

It allows you to back up your contacts, messages, calendar, photos and applications, then import the backup files to your phone.

Supported Operating Systems

Windows XP/Vista/Windows 7/Windows 8.

12.2 Upgrade

You can use Mobile Upgrade tool or FOTA Upgrade tool to update your phone's software.

12.2.1 Mobile Upgrade




Download Mobile Upgrade from ALCATEL ONETOUCH website (www.alcatelonetouch.com) and install it on your PC. Launch the tool and update your phone by following the step by step instructions (refer to the User Guide provided together with the tool). Your phone's software will now have the latest software.




All personal information will be permanently lost following the update process. We recommend you back up your personal data using Smart Suite before upgrading.

12.2.2 FOTA Upgrade

Using FOTA Upgrade tool you can update your phone's software.

To access **System Updates**, please open notification panel and touch  and then , then press **About phone\System updates**. Or you can directly touch  and access **Settings>About phone\System updates**. Touch **Check for updates**, and the phone will search for the latest software. If you want to update the system, touch the button **Download**, after it's done please touch **Install** to complete the upgrade. Now your phone's software will have the latest version.

You should turn on data connection or Wi-Fi before searching for updates. Settings for auto-check intervals and reminders about upgrades are also available once you restart the phone.

If you have chosen auto-check, when the system discovers the new version, the  will appear in the status bar. Touch the notification to access the **System Updates** directly.



During FOTA downloading or updating, to avoid errors in locating the correct update packages, do not change your default storage location.

13 Warranty

Your phone is warranted against any defect or malfunctioning which may occur in conditions of normal use during the warranty period of twelve (12) months⁽¹⁾ from the date of purchase as shown on your original invoice. Batteries⁽²⁾ and accessories sold with your phone are also warranted against any defect which may occur during the first six (6) months⁽¹⁾ from the date of purchase as shown on your original invoice.

In case of any defect of your phone which prevents you from normal use thereof, you must immediately inform your vendor and present your phone with your proof of purchase.

If the defect is confirmed, your phone or part thereof will be either replaced or repaired, as appropriate. Repaired phone and accessories are entitled to a one (1) month warranty for the same defect. Repair or replacement may be carried out using reconditioned components offering equivalent functionality.

This warranty covers the cost of parts and labor but excludes any other costs.

This warranty shall not apply to defects to your phone and/or accessory due to (without any limitation):

- 1) Non-compliance with the instructions for use or installation, or with technical and safety standards applicable in the geographical area where your phone is used,
- 2) Connection to any equipment not supplied or not recommended by TCL Communication Ltd,

⁽¹⁾ The warranty period may vary depending on your country.

⁽²⁾ The life of a rechargeable mobile phone battery in terms of conversation time standby time, and total service life, will depend on the conditions of use and network configuration. Batteries being considered expendable supplies, the specifications state that you should obtain optimal performance for your phone during the first six months after purchase and for approximately 200 more recharges.

- 3) Modification or repair performed by individuals not authorised by TCL Communication Ltd. or its affiliates or your vendor,
- 4) Modification, adjustment or alteration of software or hardware performed by individuals not authorised by TCL Communication Ltd,
- 5) Inclement weather, lightning, fire, humidity, infiltration of liquids or foods, chemical products, download of files, crash, high voltage, corrosion, oxidation...

Your phone will not be repaired in case labels or serial numbers (IMEI) have been removed or altered.

There are no express warranties, whether written, oral or implied, other than this printed limited warranty or the mandatory warranty provided by your country or jurisdiction.

In no event shall TCL Communication Ltd or any of its affiliates be liable for indirect, incidental or consequential damages of any nature whatsoever, including but not limited commercial or financial loss or damage, loss of data or loss of image to the full extent those damages can be disclaimed by law.

Some countries/states do not allow the exclusion or limitation of indirect, incidental or consequential damages, or limitation of the duration of implied warranties, so the preceding limitations or exclusions may not apply to you.

4 Accessories

The latest generation of ALCATEL ONETOUCH mobile phones offers a built-in handsfree feature that allows you to use the telephone from a distance, placed on a table for example. For those who prefer to keep their conversations confidential, an earpiece is also available known as the headset.


1. Charger
2. USB cable
3. Stereo headset



Only use your telephone with the ALCATEL ONETOUCH batteries, chargers and accessories in your box.

15 Troubleshooting.....

Before contacting the service centre, you are advised to follow the instructions below:

- You are advised to fully charge () the battery for optimal operation.
- Avoid storing large amounts of data in your phone as this may affect its performance.
- Use **Factory data reset** and Mobile Upgrade tool to perform phone formatting or software upgrading (to reset factory data, hold down the **Power** key and the **Volume up** key at the same time under power off mode). ALL User phone data: contacts, photos, messages and files, downloaded applications will be lost permanently. It is strongly advised to fully backup the phone data and profile via Smart Suite before doing formatting and upgrading.

and carry out the following checks:

My phone cannot be switched on or is frozen

- When the phone cannot be switched on, charge for at least 20 minutes to ensure the minimum battery power needed, then try to switch on again.
- When the phone falls into a loop during power on-off animation and the user interface cannot be accessed, press and hold the **Volume down** key to enter Safe Mode. This eliminates any abnormal OS booting issues caused by 3rd party APKs.
- If neither method is effective, please reset the phone using the **Power** key and the **Volume up** key (holding both together) or upgrade software via Mobile Upgrade tool.

My phone has not responded for several minutes

- Restart your phone by pressing and holding the **Power** key.
- Remove the battery and re-insert it, then restart the phone
- If it still does not work, please use Factory data reset to reset the phone or FOTA/Mobile Upgrade to upgrade software.

My phone turns off by itself

- Check that your screen is locked when you are not using your phone, and make sure the **Power** key is not accidentally contacted while the screen is unlocked.
- Check the battery charge level.
- If it still does not work, please use Factory data reset to reset the phone or FOTA/Mobile Upgrade to upgrade software.

My phone cannot charge properly

- Make sure you are using an ALCATEL ONETOUCH battery and the charger from the box.
- Make sure your battery is inserted properly and clean the battery contact if it's dirty. It must be inserted before plugging in the charger.
- Make sure that your battery is not completely discharged; if the battery power is empty for a long time, it may take around 20 minutes to display the battery charger indicator on the screen.
- Make sure charging is carried out under normal conditions (0°C to +40°C).
- When abroad, check that the voltage input is compatible.

My phone cannot connect to a network or "No service" is displayed

- Try connecting in another location.
- Verify the network coverage with your operator.
- Check with your operator that your SIM card is valid.
- Try selecting the available network(s) manually
- Try connecting at a later time if the network is overloaded.

My phone cannot connect to the Internet

- Check that the IMEI number (press *#06#) is the same as the one printed on your warranty card or box.
- Make sure that the internet access service of your SIM card is available.
- Check your phone's Internet connecting settings.
- Make sure you are in a place with network coverage.
- Try connecting at a later time or another location.

Invalid SIM card

- Make sure the SIM card has been correctly inserted (see "Inserting or removing the SIM card").
- Make sure the chip on your SIM card is not damaged or scratched.
- Make sure the service of your SIM card is available.

Unable to make outgoing calls

- Make sure you have dialled a valid number and have touched **Call**.
- For international calls, check the country and area codes.
- Make sure your phone is connected to a network, and the network is not overloaded or unavailable.
- Check your subscription status with your operator (credit, SIM card valid, etc.).
- Make sure you have not barred outgoing calls.
- Make sure that your phone is not in aeroplane mode.

Unable to receive incoming calls

- Make sure your phone is switched on and connected to a network (check for overloaded or unavailable network).
- Check your subscription status with your operator (credit, SIM card valid, etc.).
- Make sure you have not forwarded incoming calls.
- Make sure that you have not barred certain calls.
- Make sure that your phone is not in aeroplane mode.


The caller's name/number does not appear when a call is received

- Check that you have subscribed to this service with your operator.
- Your caller has concealed his/her name or number.

I cannot find my contacts

- Make sure your SIM card is not broken.
- Make sure your SIM card is inserted properly.
- Import all contacts stored in SIM card to phone.

The sound quality of the calls is poor

- You can adjust the volume during a call by pressing the **Volume Up/Down** key.
- Check the network strength .

- Make sure that the receiver, connector or speaker on your phone is clean.

I am unable to use the features described in the manual

- Check with your operator to make sure that your subscription includes this service.
- Make sure this feature does not require an ALCATEL ONETOUCH accessory.

When I select a number from my contacts, the number cannot be dialled

- Make sure that you have correctly recorded the number in your file.
- Make sure that you have selected the country prefix when calling a foreign country.

I am unable to add a contact in my contacts

- Make sure that your SIM card contacts are not full; delete some files or save the files in the phone contacts (i.e. your professional or personal directories).

My callers are unable to leave messages on my voicemail

- Contact your network operator to check service availability.

I cannot access my voicemail

- Make sure your operator's voicemail number is correctly entered in "Voicemail number".
- Try later if the network is busy.

I am unable to send and receive MMS

- Check your phone memory availability as it might be full.
- Contact your network operator to check service availability and check MMS parameters.
- Verify the server centre number or your MMS profile with your operator.
- The server centre may be swamped, try again later.

SIM card PIN locked

- Contact your network operator to obtain the PUK code (Personal Unblocking Key).

I am unable to connect my phone to my computer

- Install Smart Suite.

- Check that your USB driver is installed properly.
- Open the Notification panel to check if the Smart Suite Agent has been activated.
- Check that you have marked the checkbox of USB debugging.
- Check that your computer meets the requirements for Smart Suite Installation.
- Make sure that you're using the right cable from the box.

I am unable to download new files

- Make sure there is sufficient phone memory for your download.
- Select the microSD card as the location to store downloaded files.
- Check your subscription status with your operator.

The phone cannot be detected by others via Bluetooth

- Make sure that Bluetooth is turned on and your phone is visible to other users.
- Make sure that the two phones are within Bluetooth's detection range.

How to make your battery last longer

- Make sure you follow the complete charge time (minimum 2.5 hours).
- After a partial charge, the battery level indicator may not be exact. Wait for at least 20 minutes after removing the charger to obtain an exact indication.
- Adjust the brightness of screen as appropriate
- Extend the email auto-check interval for as long as possible.
- Update news and weather information on manual demand, or increase their auto-check interval.
- Exit background-running applications if they are not being used for a long time.
- Deactivate Bluetooth, Wi-Fi, or GPS when not in use.

The phone will become warm following prolonged calls, game playing, internet surfing or running other complex applications.

- This heating is a normal consequence of the CPU handling excessive data. Ending above actions will make your phone return to normal temperatures.

16 Specifications

Processor	MTK6572
Platform	Android™ V4.4
Memory	ROM: 4 GB RAM: 512 MB
Dimensions (LxWxT)	132.2X65.1X11.7 mm
Weight	Around 150 grams with battery
Display	4.5-inch TFT touchscreen with 480 x 854 FVVGA
Network	GSM: Quad-band 850/900/1800/1900 MHz UMTS: Dual band 900/2100 MHz (Band frequency and data speed are operator dependent.)
GPS	With GPS support
Connectivity	<ul style="list-style-type: none"> • Bluetooth V4.0 • Wi-Fi Direct 802.11 b/g/n • 3.5 mm audio jack • micro-USB

Camera	<ul style="list-style-type: none"> • 5 megapixel back camera • VGA front camera
Audio supported formats	WAV, MP3, MP2, AAC, AMR-NB, AMR-WB, MIDI, Vorbis, APE, AAC-plus v1, AAC-plus v2, FLAC, WMA, ADPCM
Video supported formats	H.263, H.264 AVC, MPEG4, VP8
Battery ⁽¹⁾	<ul style="list-style-type: none"> • Rechargeable Lithium-ion battery • Capacity: 1400mAh
Expansion Slot	microSD™ memory card (Availability of microSD card depends on market)
Special Features	<ul style="list-style-type: none"> • G-sensor

Note: Specifications are subject to change without prior notice.

⁽¹⁾ The original battery has undergone rigorous safety inspections to meet qualification standards, the use of non-original batteries may be dangerous.

ALCATEL is a trademark of Alcatel-Lucent and is used under license by TCL Communication Ltd.

© Copyright 2015 TCL Communication Ltd
All rights reserved

TCL Communication Ltd reserves the right to alter material or technical specification without prior notice.

All "Signature" ringtones embedded in this phone have been composed, arranged and mixed by NUTROPIC (Amar Kabouche).