

A large, stylized graphic of the word "ALBA" in white, bold, sans-serif capital letters. The text is set against a dark, abstract background of overlapping geometric shapes and light spots, resembling a starburst or a digital signal. The graphic is centered at the top of the page.

# ALBA

## Stereo DAB/FM Radio Instruction manual

411016 / 411017



You'll soon be up and running

Looking forward to your new Alba Stereo DAB/FM Radio? Great. Then let's get you started.

Just follow this simple step-by-step guide and you'll be good to go.

## Help and Guidance

We're here to help you get the most from your Stereo DAB/FM Radio. Should you require any guidance, a simple solution can often be found online at:

**[www.argos-support.co.uk](http://www.argos-support.co.uk)**

If you still require further assistance, call one of our experts on **0345 600 3021**.

If you require any technical guidance or find that your product is not operating as intended, a simple solution can often be found in the **Troubleshooting**

**ALBA**

# Contents

## 1 Safety information

Safety information 7

## 2 Getting to know your Stereo DAB/FM Radio

Ready? Let's begin 10

Positioning your Stereo DAB/FM Radio 14

Power connection 14

Inserting the batteries (optional) 15

## 3 Using your Stereo DAB/FM Radio

Telescopic aerial 18

Switch on 18

Adjusting the volume 18

Change the mode 18

Time and date 19

Using headphones 20

DAB Radio mode 20

Changing DAB stations 20

Scanning for DAB stations 20

Prune DAB stations 21

Storing a DAB station preset 21

Tune to a DAB station preset 22

DAB display information 22

Dynamic range control (DRC) 23

FM Radio mode 24

Tuning to an FM station 24

Changing the Scan setting 24

section of these instructions, or online at [www.argos-support.co.uk](http://www.argos-support.co.uk) If you still require further assistance, call one of our experts on 0345 600 3021

# Contents

Audio mode	25
Storing an FM station preset	25
Tune to an FM station preset	26
FM display information	26
Setting the alarm	27
Stop the Alarm	28
Snooze	28
Turn off the Alarm	29
Sleep timer	29
Cancel the Sleep timer	30
Display backlight timeout	30
Display language	31

## 4 Other information

Software version	34
Factory reset	34
Technical specification	35

## 5 Product support

Troubleshooting	38
Help and assistance	39
Disposal	40
Guarantee	41

If you require any technical guidance or find that your product is not operating as intended, a simple solution can often be found in the **Troubleshooting**

This page is left intentionally blank



This page is left intentionally blank



# Safety information

1





## Safety information

**Important** - Please read these instructions fully before installing or operating

### General safety information

- Keep the product and all its parts out of reach of small children.
- This product is not intended for use by persons (including children) with reduced physical, sensory or mental capabilities, or lack of experience and knowledge, unless they have been given supervision or instruction concerning the use of the appliance by a person responsible for their safety.
- Do not attempt to open the product. This product does not contain any user serviceable parts. Unauthorised handling of the device may damage it and will void your warranty.
- Do not use your Radio near emergency/intensive care medical equipment; if you have a pacemaker fitted or during an electrical storm.



- To avoid possible hearing damage, do not listen to this radio at high volume levels for long periods of time. Always keep the volume within reasonable limits.

### Power source

- Only use the power supply that came with the product. Using an unauthorised power supply will invalidate your guarantee and may irrecoverably damage the product.
- Disconnect your Radio from the mains power supply during thunderstorms.
- Always check that you have completely switched off your Radio, before you change or disconnect the power supply.
- Where the mains power plug or an appliance coupler is used as the disconnect device, the disconnect device shall remain readily operable.
- If the Radio will not be used for a long period of time, make sure that all of the batteries are removed from the battery compartment and the mains power is unplugged.
- Only use recommended batteries or those of the same or equivalent type.
- **Do not** mix old and new batteries or batteries of different types.
- Batteries are to be inserted with the correct polarity.

If you require any technical guidance or find that your product is not operating as intended, a simple solution can often be found in the **Troubleshooting**





## Safety information

**Important** - Please read these instructions fully before installing or operating

- The supply terminals are not to be short-circuited.
- Remove the batteries from the Radio if they will not be used for an extended period of time.
- Never throw batteries in a fire or attempt to open the outer casing.
- Batteries are harmful if swallowed, so keep away from young children.



- Danger of explosion if batteries are incorrectly replaced. Replace only with the same or equivalent type.

### Moisture and water

- Keep it dry. Avoid exposure to precipitation, humidity and liquids which could all affect the product circuitry.
- **Do not** leave it in low temperatures as moisture can form inside the product, which may damage the circuit board.

### Ventilation

- Do not block or cover slots, holes or openings on the product by placing on soft furnishings such as carpets, rugs or beds as these are provided for functionality and/or ventilation to ensure safe operation of the product

### Heat sources and flames

- **Do not** leave it in high temperatures as electronic devices and plastic parts may warp in heat.
- Keep it away from bright sunlight or heat sources, such as a radiator.



This page is left intentionally blank



Getting to know your Stereo DAB/  
FM Radio

2



# Getting to know your Stereo DAB/FM Radio

You'll be up and running in no time

## Ready? Let's begin...

Please read these instructions carefully. They contain important information which will help you get the best from your product and ensure safe and correct installation and operation.

If you require any further assistance, our technical experts are happy to help. For full details, refer to the product support section at the end of these instructions.

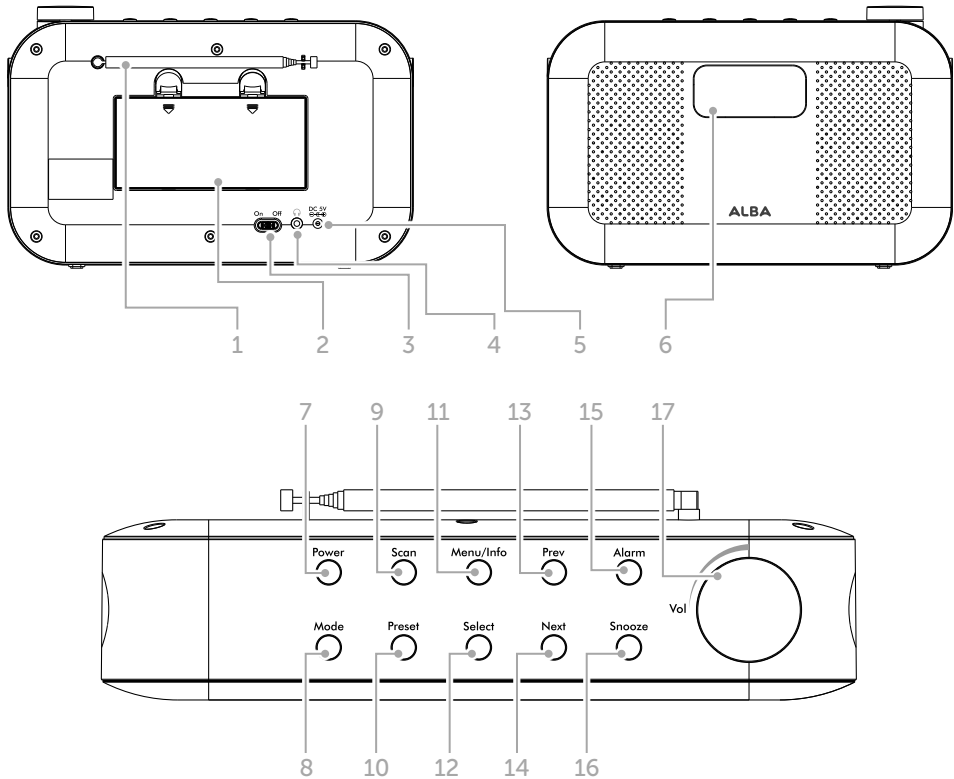


Fig 1.

If you require any technical guidance or find that your product is not operating as intended, a simple solution can often be found in the **Troubleshooting**

# Getting to know your Stereo DAB/FM Radio

You'll be up and running in no time

1. Telescopic radio aerial
2. Battery compartment
3. Power On/Off switch
4. Headphone socket
5. Power lead socket
6. Backlit display
7. Power on/standby
  - Short press: Power on
  - Short press: Standby (Mains power only)
  - Short press: Power off (Batteries only)
8. Change the Mode
9. Scan for radio stations
10. Radio presets
11. Menu/Info
  - Short press: Station information
  - Long press: Enter the Menu options
  - Short press (within the Menu): Steps back and exits the Menu
12. Select
13. Prev
  - Short press:
    - In DAB mode: Move down the DAB station list
    - In FM mode: Move down the frequency band by 0.05MHz
- In the Menu: Move through the Menu options
- Long press:
  - In FM mode: Scan down the frequency band
14. Next
  - Short press:
    - In DAB mode: Move up the DAB station list
    - In FM mode: Move up the frequency band by 0.05MHz
  - In the Menu: Move through the Menu options
  - Long press:
    - In FM mode: Scan up the frequency band
15. Alarm:
  - Short press: Alarm 1
  - 2nd Short press: Alarm 2
  - In Standby Mode:
    - Short press: Turn on/off each alarm
16. Snooze
17. Rotary volume control

section of these instructions, or online at [www.argos-support.co.uk](http://www.argos-support.co.uk) If you still require further assistance, call one of our experts on 0345 600 3021

# Getting to know your Stereo DAB/FM Radio

You'll be up and running in no time

## Positioning your Stereo DAB/FM Radio

Please consider carefully in advance where your Radio will be situated and make sure that it is:

- on a flat and stable surface
- within 1.4 metres of a power socket (if using mains power). Please ensure that the mains power lead is not a trip hazard.
- at least 1 metre away from other electrical appliances to avoid interference
- where you can fully extend the telescopic aerial
- never place your Radio directly onto antique or polished surfaces

## Power connection

1. Connect the mains power lead into the socket on the back of the radio and fully extend the telescopic aerial in a vertical position to obtain the maximum signal strength.
2. Plug the power adaptor into the mains power wall socket and switch on.
3. Slide the On/Off power switch on the back of the radio to On. The product display will light up, 'Welcome to Digital Radio' will be displayed and then your radio will go to Standby mode.

---

**Note:** When you are using batteries to power your radio and slide the On/Off power switch on the back of the radio to On, the product display will light up, 'Welcome to Digital Radio' will be displayed and then your radio will immediately scan for DAB stations. There is no Standby mode when you are using battery power.

---

If you require any technical guidance or find that your product is not operating as intended, a simple solution can often be found in the **Troubleshooting**

# Getting to know your Stereo DAB/FM Radio

You'll be up and running in no time

## Inserting the batteries (optional)

1. Before installing the batteries (not included) please ensure that the radio is switched off (slide the power switch on the back to Off) and is unplugged from the mains power supply.
2. On the back of the radio, push in the tabs to release and remove the battery compartment cover (Fig 2).
3. Insert 4 x 1.5V C-size (also known as LR14) batteries, making sure to note the '+' and '-' markings and position the batteries the correct way around..
4. Replace the battery cover, making sure it 'clicks' shut.

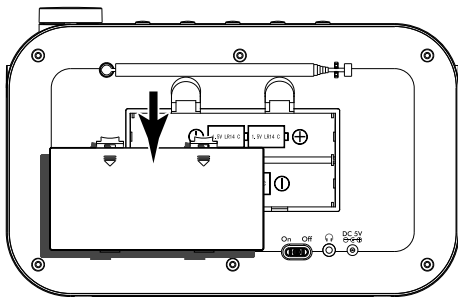


Fig 2.

---

**Note:** For battery operation, please ensure that the mains power is switched off and remove the mains power plug from the socket, on the back of the Radio.

---



This page is left intentionally blank





# Using your Stereo DAB/FM Radio

3



# Using your Stereo DAB/FM Radio

Let's get started

## Telescopic aerial

Please make sure that the aerial is fully extended before you switch on your radio and attempt to tune to a DAB station (a vertical position is recommended). This will ensure that the maximum signal strength is available when the radio begins to scan. Extending the aerial also ensures the best possible sound quality.

## Switch on

1. Press and release the Power button on the top of your radio. Your radio will switch on and begin an automatic scan for DAB stations. A progress bar will show the progress of the scan and the number of stations found during the scan will also be displayed.

---

**Note:** When using battery power, your radio will scan for DAB stations after you slide the On/Off power switch on the back of the radio to On. There is no Standby mode when you are using battery power.

---

2. When the scan is complete your radio will select the first available station and begin to play. Stations are listed in numerical and then alphabetical order by default.

---

**Note:** The DAB radio station list is stored in the memory and so the next time you switch your radio on, the station search does not take place. It is possible to scan manually for stations by pressing and releasing the Scan button.

---

## Adjusting the volume

- Turn clockwise to increase the volume.
- Turn anti-clockwise to decrease the volume.
- Check the display, which will confirm the volume setting.

## Change the mode

Press and release the Mode button to change between DAB and FM modes. Please check the display, which will confirm the mode.

If you require any technical guidance or find that your product is not operating as intended, a simple solution can often be found in the **Troubleshooting**

# Using your Stereo DAB/FM Radio

Let's get started

## Time and date

The first time you listen to DAB radio, the time and date of your product will be synchronised automatically to that broadcast by the DAB service in 24 hour mode; which is in line with daylight saving, so there is no need to set the time and date manually.

If you do wish to set the time and date manually, turn on the radio and follow the steps below:

1. Press and hold the Menu/Info button to enter the menu options.
2. Press and release the Next button to scroll to <System>. Press and release the Select button.
3. Press and release the Next button to scroll to <Time>. Press and release the Select button. <Set Time/Date> is displayed. Press and release the Select button.
4. Set time is displayed and the hour digits will flash. Press and release the Prev or Next button to scroll to the correct hour. Press and release the Select button.
5. The minutes will now flash. Press and release the Prev or Next button to scroll to the correct minutes. Press and release the Select button. Set date is displayed and the day will flash. Use the Prev and Next buttons, together with the Select button, to select and confirm the day, month and year, using the same method as you used to set the time.

When you confirm the correct date, Time Saved is displayed and the display returns to <Set Time/Date>.

You can now use the Prev and Next buttons to scroll and the Select button to confirm, as you did to set the time and date to change the settings for:

- 12/24 hour clock display
- The date format, DD-MM-YYYY or MM-DD-YYYY
- To auto update the time from the DAB signal, FM signal, DAB or FM signal or no update.

# Using your Stereo DAB/FM Radio

Let's get started

## Using headphones

You can connect headphones with a 3.5mm plug (not included) to your radio. The stereo headphone socket can be found on the back of the radio at the bottom. When you have headphones connected the radio speakers are switched off and all sound is via the headphones.

---

**Note:** Always keep the volume within reasonable limits.

---

## DAB Radio mode

Check that your Radio is in DAB mode. If you are not already in DAB mode, press and release the Mode button until you are in DAB mode (check the display).

The first time you use the Radio or if the station list is empty, your radio will automatically begin to scan for DAB radio stations. A progress bar will show the progress of the scan and the number of stations found during the scan will also be displayed.

If you were listening to a DAB station when you switched the radio off, then this station will automatically be selected when you switch the radio back on.

## Changing DAB stations

1. Press and release the Next and Prev buttons to scroll through the available stations.
2. When the station that you would like to listen to is displayed, press and release the Select button to confirm. There will be a short delay whilst your radio tunes to your selected station.

## Scanning for DAB stations

With DAB radio, additional stations and services regularly become available so it's a good idea to carry out a manual scan every now and then to make sure that you have the most up to date station listing stored within the memory of your Radio. If you have moved your Radio to another location, e.g.: if you go on holiday, then it's also a good idea to carry out a manual scan.

If you require any technical guidance or find that your product is not operating as intended, a simple solution can often be found in the **Troubleshooting**

# Using your Stereo DAB/FM Radio

Let's get started

In DAB mode:

1. Press and release the 'Scan' button to begin a search for stations. The display will change to 'Scanning...'. A progress bar will show the progress of the scan and the number of stations found during the scan will also be displayed.

## Prune DAB stations

You can remove the DAB stations in the station list that cannot be received in your area. These are listed with a '?' prefix.

In DAB mode:

1. Press and hold the Menu/Info button to enter the menu options.
2. Press and release the Next button to scroll to <Prune>. Press and release the Select button.
3. Prune? <No> Yes is displayed. Press and release the Prev button to scroll to <Yes>. Press and release the Select button to confirm and prune the station list. Stations with a '?' prefix will now no longer be displayed.

## Storing a DAB station preset

Your Radio can store up to 10 DAB radio stations in its preset memories for instant access to your favourite stations.

1. Tune the Radio to the DAB radio station that you wish to preset.
2. Press and hold the Preset button for approximately 2 seconds until Preset Store <1:(Empty)> is displayed if no previous station has been stored.
3. Press and release the Prev or Next button to scroll to the preset location that you would like to store the radio station to (1-10).
4. Press and release the Select button to confirm. Preset X stored, where 'X' is the number of the preset (1-10), will be displayed.

---

**Note:** If there is already an existing DAB station stored under a preset, it will be over written when you store the new station.

---

section of these instructions, or online at [www.argos-support.co.uk](http://www.argos-support.co.uk) If you still require further assistance, call one of our experts on 0345 600 3021

# Using your Stereo DAB/FM Radio

Let's get started

## Tune to a DAB station preset

In DAB mode:

1. Press and release the Preset button. Preset Recall <1:> is displayed together with the name or frequency of the station stored there, or (Empty) if no previous station has been stored.
2. Press and release the Prev or Next button to scroll to the preset location and station that you would like to listen to (1-10).
3. Press and release the Select button to confirm. The radio will instantly tune to that station and begin to play.

---

**Note:** If no DAB station has been stored under the preset button, 'Preset Empty' will be displayed, then the radio will revert to the previously selected radio station.

---

## DAB display information

When listening to a DAB station you can change the information that will appear on the display. There are several different types of information that are sent by the broadcaster.

- **Dynamic Label Segment (DLS)** - this is scrolling text information supplied by the broadcaster. Information could be the name of an artist or music title, DJ's name, contact details for the radio station etc.
- **Signal Strength** - An empty  will appear on the display to indicate the minimum signal strength for acceptable listening. The row of solid rectangles indicate the actual signal strength that you are receiving. The stronger the signal, the further to the right the row of solid rectangles will be.
- **Program Type (PTY)** - such as 'Rock', 'Pop', 'Talk' or 'News'
- **Multiplex Name** - displays the broadcasting area and collection of radio stations on this frequency e.g.: BBC National DAB, Digital 1 Network.
- **Channel and Frequency** - e.g.: 12B 225.648 MHz
- **Signal error** - This is displayed as a number between 0-99. It would not be possible to satisfactorily listen to a radio station with a signal error rate of 30 or above. Try adjusting the aerial or relocating your radio to improve reception.

If you require any technical guidance or find that your product is not operating as intended, a simple solution can often be found in the **Troubleshooting**

# Using your Stereo DAB/FM Radio

Let's get started

- **Signal information** - The data rate at which the signal is being transmitted.
  - **Time and date** - supplied by the broadcaster.
1. Repeatedly press and release the Menu/Info button to cycle through the different information options.

## Dynamic range control (DRC)

In DAB mode:

The dynamic range for each radio programme is set by the broadcaster for each radio station and may be different for the types of programme broadcast, such as pop or classical music or a chat show. The dynamic range control signal is transmitted in parallel with the audio signal for each programme and with your radio you can use this control signal to expand or compress the dynamic range (the difference between the loudest and quietest sounds) of the reproduced audio signal. Changing the dynamic range can affect the 'loudness' and/or 'quality of sound' of the programme that you hear so that it will be more suited to your listening conditions and your own personal listening requirements. e.g. in a noisy environment, where quiet sounds might be swamped, setting the compression to maximum will 'boost' the quiet sounds, whilst keeping the loudest sounds at their original level.

There are 3 levels of compression:

- **DRC off** - no compression. This is the default setting.
  - **DRC low** - medium compression.
  - **DRC high** - maximum compression.
1. Press and hold the Menu/Info button to enter the menu options.
  2. Press and release the Next button to scroll to <DRC>. Press and release the Select button. The current DRC setting will have an '\*' in the display.
  3. Press and release the Next button to scroll through the options and press and release the Select button to confirm.

# Using your Stereo DAB/FM Radio

Let's get started

## FM Radio mode

If you are not already in FM mode, press and release the Mode button to go to FM mode (check the display).

If you were listening to an FM station when you switched the Radio off then this station will be automatically selected when you switch the Radio back on.

## Tuning to an FM station

- Press and hold the Next button to scan up the frequency band.
- Press and hold the Prev button to scan down the frequency band.
- Press and release the Next or Prev button to fine tune each frequency in 0.05MHz steps.

---

**Note:** If reception is still poor try moving the radio to another location.

---

## Changing the Scan setting

In FM mode:

1. Press and hold the Menu/Info button to enter the menu options.
2. Press and release the Next button until FM <Scan setting> is displayed. Press and release the Select button. The current Scan setting will have an '\*' in the display.

There are two different options to choose from:

- **Strong stations** - The scan will only stop when a strong signal strength is received which should also result in a better audio quality. It is possible that the station you are scanning for may be missed using this option.
  - **All stations** - The scan will stop for every station it receives, even if the signal strength is poor.
3. Press and release the Next button to choose from the two options available and press and release the Select button to confirm.

If you require any technical guidance or find that your product is not operating as intended, a simple solution can often be found in the **Troubleshooting**



# Using your Stereo DAB/FM Radio

Let's get started

## Audio mode

The radio will automatically switch between Stereo and Mono, depending on the quality of the signal being received but you can override this function and manually switch between 'Forced Mono' and 'Stereo Allowed'.

1. Press and hold the Menu/Info button to enter the menu options.
2. Press and release the Next button to scroll to <Audio setting>. Press and release the Select button.

There are now two different options of <Forced mono> and <Stereo allowed> and the current setting will have an '\*' display.

3. Press and release the Next button to choose from the two options available. Press and release the Select button to confirm.

## Storing an FM station preset

Your Radio can store up to 10 FM radio stations in its preset memories for instant access to your favourite stations.

1. Tune the Radio to the FM radio station that you wish to preset.
2. Press and hold the Preset button for approximately 2 seconds until Preset Store <1:(Empty)> is displayed if no previous station has been stored.
3. Press and release the Prev or Next button to scroll to the preset location that you would like to store the radio station to (1-10).
4. Press and release the Select button to confirm. Preset X stored, where 'X' is the number of the preset (1-10), will be displayed.

---

**Note:** If there is already an existing FM station stored under a preset, it will be overwritten when you store the new station.

---

# Using your Stereo DAB/FM Radio

Let's get started

## Tune to an FM station preset

In FM mode:

1. Press and release the Preset button. Preset Recall <1:> is displayed together with the name or frequency of the station stored there, or (Empty) if no previous station has been stored.
2. Press and release the Prev or Next button to scroll to the preset location and station that you would like to listen to (1-10).
3. Press and release the Select button to confirm. The radio will tune to that station and begin to play.

---

**Note:** If no FM station has been stored under the preset button, Preset Empty will be displayed, then the radio will revert to the previously selected radio station.

---

## FM display information

When listening to an FM station you can change the information that will appear on the second line of the display.

**Radiotext (RT)** - This is scrolling text information supplied by the broadcaster. Information could be the name of an artist or music title, DJ's name, contact details for the radio station etc.

- **Program Type (PTY)** - Such as 'Rock', 'Pop', 'Talk' or 'News'
  - **Station name or frequency** - Such as BBC R4 or 93.30MHz
  - **Audio mode** - Stereo or Mono
  - **Time and date** - supplied by the broadcaster.
1. Repeatedly press and release the Menu/Info button to cycle through the different information options.

If you require any technical guidance or find that your product is not operating as intended, a simple solution can often be found in the **Troubleshooting**

# Using your Stereo DAB/FM Radio

Let's get started

## Setting the alarm

---

**Note:** Check that the radio has the correct time and date before you set an alarm.

---

With your radio switched on (not in Standby mode):

1. Press and release the Alarm button.
2. Alarm 1 Setup is displayed.

---

**Note:** Press and release the Alarm button again to switch to Alarm 2 Setup.

---

3. Press and release the Select button.
4. Alarm 1 (or 2) Wizard On time is displayed and the hour digits for the alarm will flash.
5. Press and release the Prev or Next buttons to scroll to the hour for the alarm and press and release the Select button.
6. The minutes will now flash. Press and release the Prev or Next buttons to scroll to the minutes for the alarm and press and release the Select button.
7. The duration time will now flash. Press and release the Prev or Next buttons to scroll to the duration for the alarm. You can choose from 15, 30, 45, 60 and 90 minutes. Press and release the Select button.
8. The source for the alarm will now flash. Press and release the Prev or Next buttons scroll to the sound source for the alarm. You can choose from Buzzer, DAB or FM. Press and release the Select button.

---

**Note:** If you select DAB or FM radio for the alarm source, 'Last listened' will flash in the display. Press the Select button and the last listened to radio station in DAB or FM, as appropriate, will be used for your alarm.

---

9. Press and release the Prev or Next buttons to scroll to the frequency for the alarm. You can choose from Daily, Once, Weekends or Weekdays. Press and release the Select button.

---

**Note:** If you select 'Once', you will then be prompted to set the date for your alarm.

---

section of these instructions, or online at [www.argos-support.co.uk](http://www.argos-support.co.uk) If you still require further assistance, call one of our experts on 0345 600 3021

# Using your Stereo DAB/FM Radio

Let's get started

10. Press and release the Prev or Next buttons to set the volume for your alarm. Press and release the Select button.

---

**Note:** Remember to set the alarm radio volume to one that will wake you. The alarm volume will increase progressively until it reaches the alarm volume you have set.

---

11. Alarm 1 Wizard is displayed again, together with Alarm Off (or On). Press and release the Prev or Next buttons to choose Alarm On or Off and press and release the Select button to confirm. Alarm Saved is displayed.
12. A bell symbol in the display, together with the digit '1' or '2' as appropriate, will confirm that an alarm has been set.

---

**Note:** If the time is not set or has failed to update from the radio signal, Time is not set will be displayed when you try to set the alarm. The radio will then prompt you to set the time. An alarm can only be set after the time has been set.

---

## Stop the Alarm

When the alarm sounds, press and release the Power button, Alarm off is displayed. Alternatively, you can press and release the Snooze button (see Snooze function below).

---

**Note:** If you press the Standby button to stop the alarm, the alarm symbol will remain in the display and the alarm will sound again at the same time the next day, unless it was set for 'Once' only.

---

## Snooze

When the alarm sounds you can press and release the Snooze button. There are 4 Snooze time options available of 5, 10, 15 and 30 minutes.

1. Press and release the Snooze button once to snooze for 5 minutes.
2. Repeatedly press and release the Snooze button to choose from 10, 15 or 30 minutes. Stop when the Snooze time you would like is displayed.
3. Your radio will now display the snooze time countdown until the alarm sounds again.

If you require any technical guidance or find that your product is not operating as intended, a simple solution can often be found in the **Troubleshooting**

# Using your Stereo DAB/FM Radio

Let's get started

## Turn off the Alarm

Follow the steps for 'Setting an Alarm' and select 'Off' in step 11.

In Standby mode you can press and release the Alarm button to turn Alarm 1 and Alarm 2 On or Off.

## Sleep timer

You can set your radio to turn off automatically using the sleep timer. You can choose from Sleep off, 15, 30, 45, 60 and 90 minutes.

With your radio switched on (not in Standby mode):

1. Press and hold the Menu/Info button to enter the menu options.
2. Press and release the Prev or Next buttons to scroll to <System>. Press and release the Select button.
3. Press and release the Prev or Next buttons to scroll to <Sleep>. Press and release the Select button.
4. Press and release the Prev or Next buttons to scroll through the available options. Stop when the sleep time you would like is displayed and press and release the Select button. <Sleep> will be displayed.
5. The sleep time minutes that you have selected will be displayed in the radio display e.g. S15, and will countdown until the radio switches off.

# Using your Stereo DAB/FM Radio

Let's get started

## Cancel the Sleep timer

With your radio switched on (not in Standby mode):

1. Press and hold the Menu/Info button to enter the menu options.
2. Press and release the Prev or Next buttons to scroll to <System>. Press and release the Select button.
3. Press and release the Prev or Next buttons to scroll to <Sleep>. Press and release the Select button.
4. Press and release the Prev or Next buttons to scroll to Sleep off. Press and release the Select button. <Sleep> will be displayed.

## Display backlight timeout

You can adjust the display backlight timeout. Options of permanently On, 10, 20, 30, 45, 60, 90, 120, and 180 seconds are available. An '\*' will be displayed next to the current setting.

With your radio switched on (not in Standby mode):

1. Press and hold the Menu/Info button to enter the menu options.
2. Press and release the Prev or Next buttons to scroll to <System>. Press and release the Select button.
3. Press and release the Prev or Next buttons to scroll to <Backlight>. Press and release the Select button.
4. <Timeout> is displayed. Press and release the Select button. Press and release the Prev or Next buttons to scroll through the available backlight timeout options of On, 10, 20, 30, 45, 60, 90, 120 or 180 seconds. Stop when the backlight timeout you would like is displayed and press and release the Select button. <Timeout> will be displayed.

You can now use the Prev or Next buttons to scroll and the Select button to confirm, as you did to set the Backlight timeout, to change the settings for the backlight brightness for the <Dim level> and <On level>. There are 3 options available, High, Medium and Low.

If you require any technical guidance or find that your product is not operating as intended, a simple solution can often be found in the **Troubleshooting**

# Using your Stereo DAB/FM Radio

Let's get started

## Display language

You can change the display language of your radio, there are 4 options available; English, French, German and Italian. An '\*' will be displayed next to the current setting.

With your radio switched on (not in Standby mode):

1. Press and hold the Menu/Info button to enter the menu options
2. Press and release the Prev or Next buttons to scroll to <System>. Press and release the Select button.
3. Press and release the Prev or Next buttons to scroll to <Language>. Press and release the Select button.
4. Press and release the Prev or Next buttons to scroll to the language you would like. Press and release the Select button to confirm.



This page is left intentionally blank





# Other information 4



# Other information

Helpful technical information

## Software version

You can check the software version of your radio.

With your radio switched on (not in Standby mode):

1. Press and hold the Menu/Info button to enter the menu options
2. Press and release the Prev or Next buttons to scroll to <System>. Press and release the Select button.
3. Press and release the Prev or Next buttons to scroll to <SW Version>. Press and release the Select button.

The software version will be displayed and you may wish to make a note of it here:

.....

## Factory reset

You can reset your radio and restore all of the original factory settings.

---

**Note:** If you reset your radio all of your stored station presets will be deleted.

---

With your radio switched on (not in Standby mode):

1. Press and hold the Menu/Info button to enter the menu options
2. Press and release the Prev or Next buttons to scroll to <System>. Press and release the Select button.
3. Press and release the Prev or Next buttons to scroll to <Factory reset>. Press and release the Select button. Factory Reset? <No> Yes will be displayed.
4. Press and release the Prev button to scroll to <Yes>. Press and release the Select button.

If you require any technical guidance or find that your product is not operating as intended, a simple solution can often be found in the **Troubleshooting**

## Other information

### Helpful technical information

5. Restarting... will be displayed. After a few seconds the display will change to Welcome to Digital Radio and will then go to Standby mode. When you next power on your radio from Standby mode, it will begin an automatic scan for DAB stations. A progress bar will show the progress of the scan and the number of stations found during the scan will also be displayed. When the scan is complete your radio will select the first available station and begin to play. Stations are listed in numerical and then alphabetical order by default.

### Technical specification

Power adaptor:	Output DC 5V 1.2A Input AC 100-240V
Batteries: (Optional, not supplied):	4 x 1.5V C size (LR14)
Audio output:	2 x 3W RMS
Frequency range:	
DAB:	Band III, 174 MHz to 240 MHz
FM:	87.5 MHz to 108 MHz



This page is left intentionally blank



Product support

5



# Product support

Help is always at hand

## Troubleshooting

### No sound / power:

- Adjust the volume
- Check that the mains power wall socket is switched on and the power switch on the back of the radio is On. Press and release the Power button on the top of the radio.
- If you have batteries fitted, they may be exhausted and need to be replaced. Please use only good quality C size batteries.
- You may have headphones connected. Either use the headphones to listen to your radio or unplug the headphones.

### Radio reception is poor:

- Fully extend the telescopic aerial to get the best reception and sound quality.
- Retune for radio stations, see pages 20 and 24.
- Try moving your radio to another location to see if reception improves.
- Check that you do not have other electrical equipment too close to your Radio, causing interference.
- Visit [www.digitalradionow.com](http://www.digitalradionow.com) for information about DAB reception in your area.

### The function buttons do not respond:

- Check that the mains power wall socket is switched on and the power switch on the back of the radio is On. Press and release the Power button on the top of the radio.
- If you are using batteries, they may be exhausted and need to be replaced.
- Unplug the mains power and remove the batteries. Leave the radio for 3 minutes and then reconnect the power.
- Try a reset to factory defaults. See page 34.

---

**Note:** All of your settings, including the radio station list and any presets will be deleted when you reset the Radio.

---

If you require any technical guidance or find that your product is not operating as intended, a simple solution can often be found in the **Troubleshooting**

# Product support

Help is always at hand

## Help and assistance

If you require any technical guidance or find that your Stereo DAB/FM Radio is not operating as intended, a simple solution can often be found in the **Troubleshooting** section of these instructions or online at [www.argos-support.co.uk](http://www.argos-support.co.uk)

If you still require further assistance, call one of our experts on **0345 600 3021\***. To help give us give you a fast and efficient service please have the following information ready:

**Model Ref.**

**Serial number**

You can find these on the rating plate - a small information panel (usually a sticker or metal plate) on the rear of your product.

**Date of purchase**

This will be shown on your receipt

Local call rates applies\*

**Lines open 8am-7pm Monday to Saturday and 10am-4pm Sunday.**

\*Calls to Argos enquiry lines may attract a charge and set up fee from residential lines depending on your call plan/tariff. Mobile and other providers costs may vary, see [www.bt.com/pricing](http://www.bt.com/pricing) for details.

For security and training purposes, telephone calls to and from customer service centres may be recorded and monitored. Calls from Republic of Ireland will attract international call charges.

section of these instructions, or online at [www.argos-support.co.uk](http://www.argos-support.co.uk) If you still require further assistance, call one of our experts on **0345 600 3021**

# Product support

Help is always at hand

## Disposal



- This product should not be treated as normal household waste and it should be recycled. Please take it to your nearest collection facility or for further details contact your local council or visit [www.recycle-more.co.uk](http://www.recycle-more.co.uk)
- Batteries contain substances that may be harmful to the environment and human health. Keep out of the reach of children and seek immediate medical help if swallowed.
- Batteries should not be disposed of in the normal household waste but taken to appropriate local recycling facilities, where and when these are available.
- Never throw batteries in a fire or attempt to open the outer casing

If you require any technical guidance or find that your product is not operating as intended, a simple solution can often be found in the **Troubleshooting**



# Product support

Help is always at hand



## Your Alba Guarantee

This product is guaranteed for twelve months from the date of original purchase. Any defect that arises due to faulty materials or workmanship will be repaired free of charge (or if applicable the product will be replaced or the purchase price refunded) where possible during this period by the dealer from who your purchased the unit.

### The guarantee is subject to the following provisions:

- The guarantee does not cover accidental damage, misuse, cabinet parts, knobs or consumable items.
- The product must be correctly installed and operated in accordance with the instructions contained in the manual.
- It must be used solely for domestic purposes. The guarantee will be rendered invalid if the product is re-sold or has been damaged by inexpert repair.
- Specifications are subject to change without notice.
- Alba disclaim any liability for loss or damage arising from the breakdown of the product.
- This guarantee is in addition to and does not diminish your statutory or legal rights.

Guarantor: Argos Limited - 489 - 499 Avebury Blvd. - Milton Keynes - MK9 2NW

section of these instructions, or online at [www.argos-support.co.uk](http://www.argos-support.co.uk) If you still require further assistance, call one of our experts on 0345 600 3021.



This page is left intentionally blank

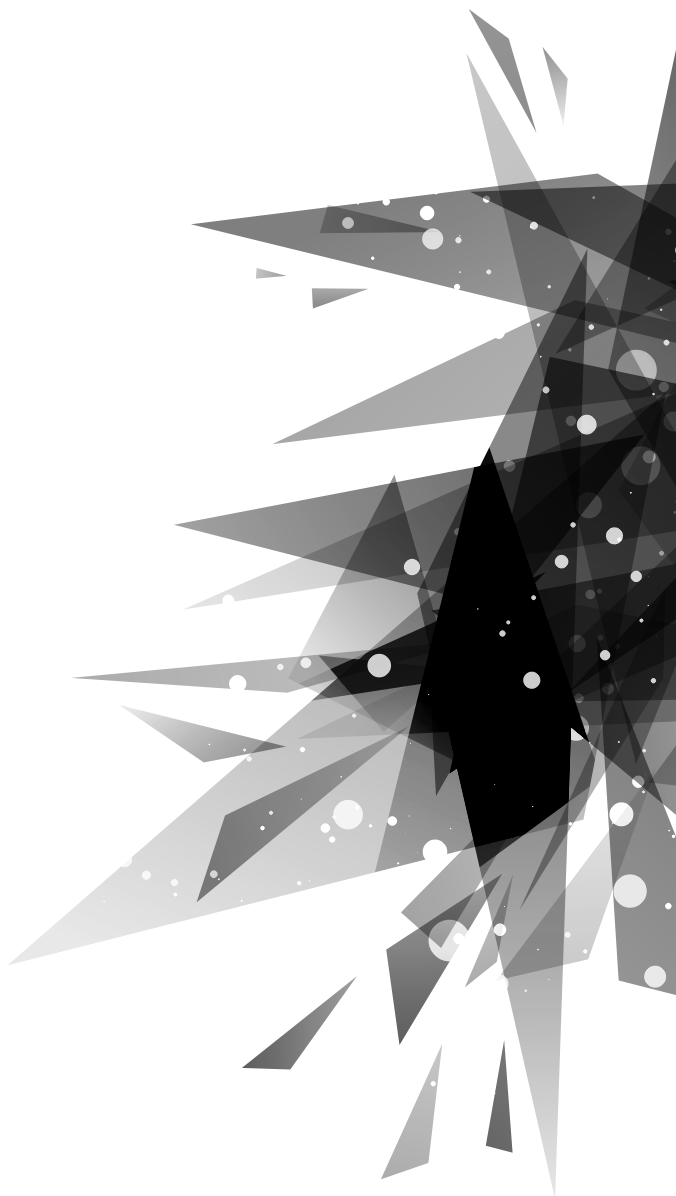




This page is left intentionally blank



# ALBA



Contact:

[www.argos-support.co.uk](http://www.argos-support.co.uk)

Helpline: 0345 600 3021

The logo for DAB Digital Radio, featuring a stylized signal icon above the text "DAB Digital" and "Radio" in a bold, sans-serif font.