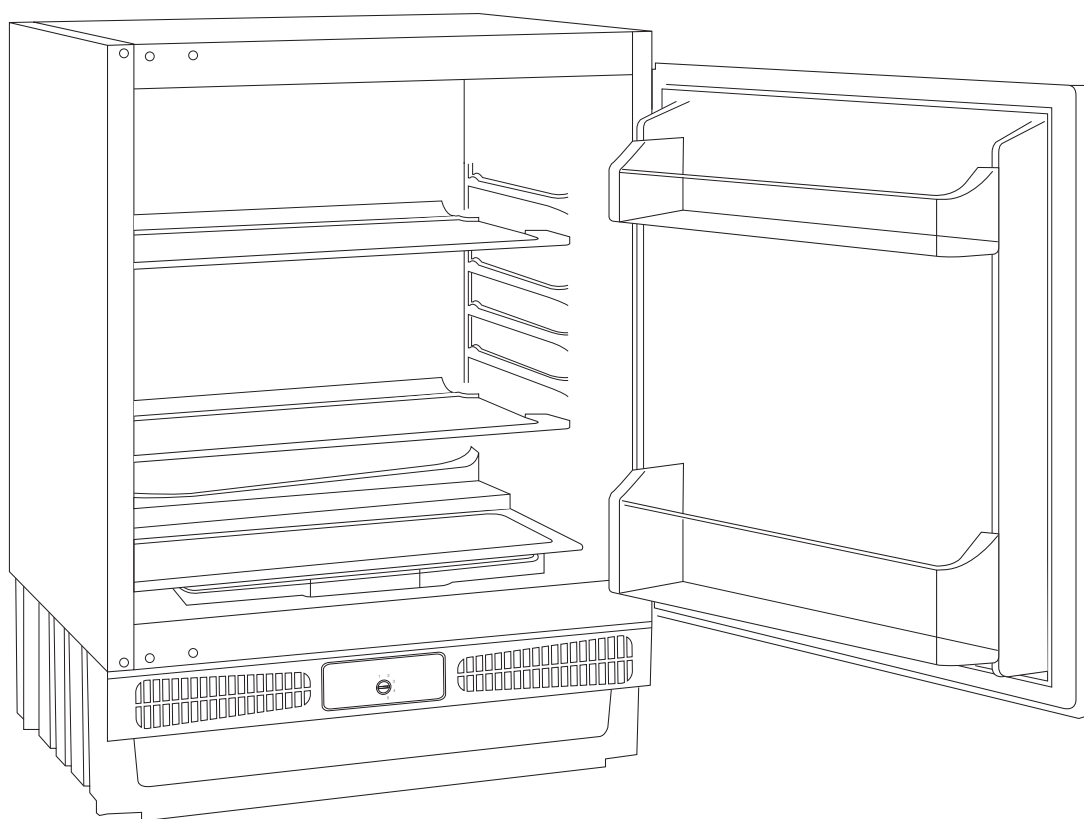


# **BUSH** Built-Under Larder

Installation & User Instructions - Please keep for future reference

BUCL6082



**Important** – Please read these instructions fully before installing or using

These instructions contain important information that will help you get the best from your appliance, ensuring safe and correct installation, use and maintenance.

If you need help or have damaged or missing parts, call the **Customer Helpline on 0845 600 4632**

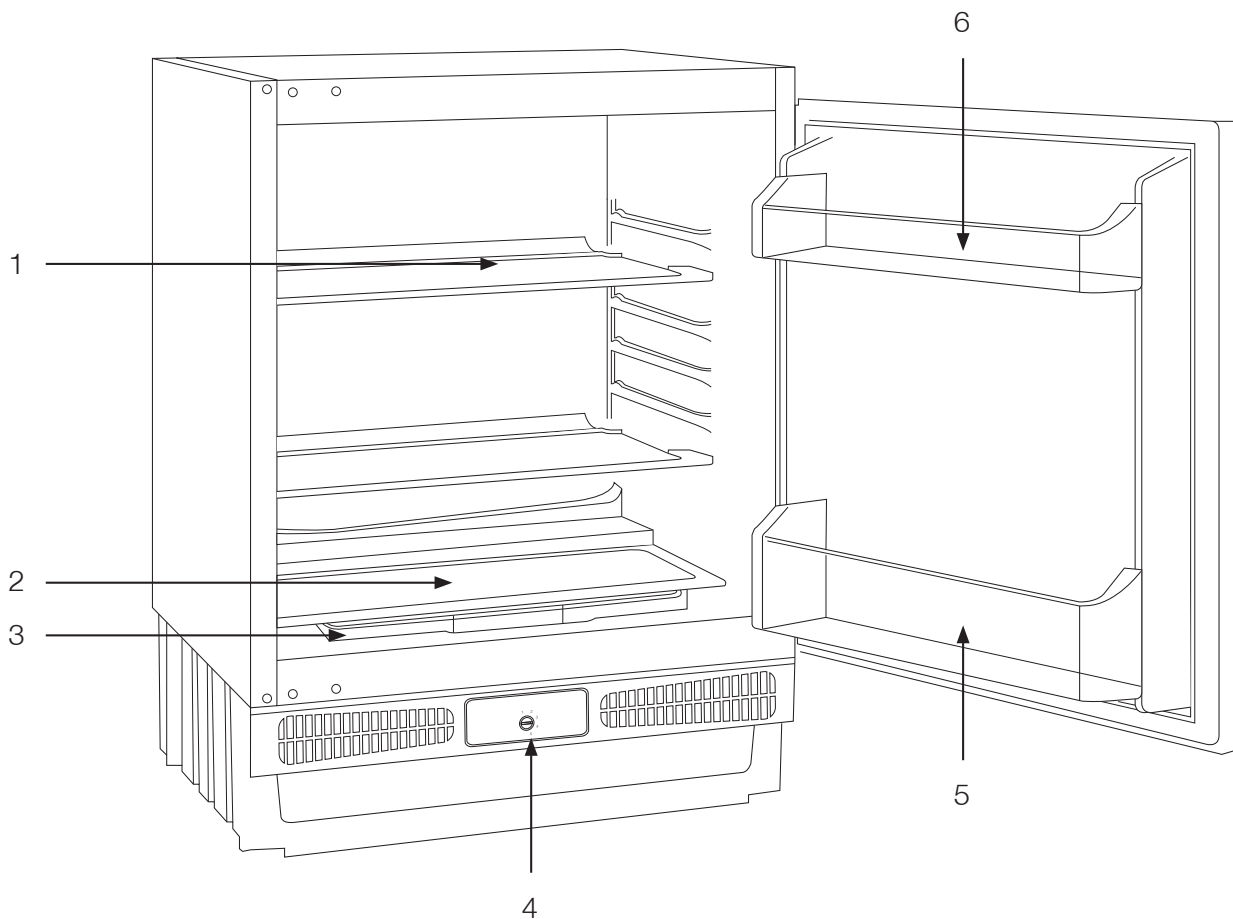
# Contents

<b>Presentation and Description of the Product</b>	<b>3</b>
<b>Safety Information</b>	<b>4</b>
<b>Before Using the Appliance</b>	<b>5</b>
Switching on the appliance	6
<b>Parts</b>	<b>6</b>
<b>Installation</b>	<b>7-13</b>
Dimensions for installation	7
Installing top bracket	7
Height adjustment	8
Position the larder	9
Securing the larder	9
Fitting the cabinet door	10
Installing the plinth	12
Reversing the door	13
<b>User Instructions</b>	<b>14</b>
Thermostat setting	14
If your larder is not cold enough	14
Reversing the door	14
<b>Cleaning and Maintenance</b>	<b>15</b>
General	15
Defrosting the refrigerator	15
Replacing the light bulb	15
<b>Trouble Shooting</b>	<b>16</b>
<b>Technical Specifications</b>	<b>17</b>
<b>Tips for Saving Energy</b>	<b>18</b>

Product code

BUCL6082

# Presentation and Description of Product



1. Larder shelf
2. Crisper cover/safety glass
3. Crisper
4. Thermostat button
5. Bottom shelf
6. Butter shelf



# Safety Information

## Important - Please read these instructions fully before installation

**IMPORTANT** - Please read this booklet before installing and switching on this appliance. The manufacturer assumes no responsibility for incorrect installation and usage as described in this booklet.

**IMPORTANT** - If the supply cord is damaged it must be replaced by the manufacturer, service agent or appointed person.

**WARNING** - keep ventilation openings (in appliance enclosure or building) clear from obstruction.

**WARNING - Do not** use electrical appliances in the larder.

**WARNING** - If this appliance is to replace an old larder with a lock, break or remove the lock to protect children from locking themselves inside.

**WARNING** - Old larders contain insulation gases and refrigerant, which must be disposed of properly. Entrust the disposal of a scrap unit to your local waste disposal service and contact your local authority or dealer if you have any questions. Please ensure that the larder pipe is not damaged prior to collection by an appropriate waste disposal service.

**WARNING - Do not** allow children to play with the appliance. Children must never sit in the drawers or hang from the door.

**WARNING - Do not** use adapters or shunts, which could cause overheating or burning.

**WARNING - Do not** connect old, warped power supply cables.

**WARNING - Do not** twist and bend the cables, and keep them away from hot surfaces.

**WARNING - Do not** connect the power supply with wet hands.

**WARNING** - After installation, make sure that the power cable is not trapped underneath the appliance.

**WARNING** - This appliance is not intended for use by people (including children) with reduced physical, sensory or mental capabilities, or lack of experience and knowledge, unless they have been given supervision or instruction concerning use of the appliance by a person responsible for their safety. Children should be supervised to ensure that they do not play with the appliance.

**WARNING - Do not** defrost the appliance with other electrical devices (i.e. hair dryer) or other artificial means.

**WARNING - Do not** touch the cooling surfaces while the appliance is in operation, especially with wet hands, as skin may stick to cold surfaces.

**CAUTION** - If the model contains R600a (see name plate - coolant is isobutane) then it is environmentally friendly but also combustible. When transporting and installing the unit, care must be taken to ensure that none of the refrigeration circuit components become damaged. In the event of damage, avoid naked flames or ignition sources and ventilate the room in which the unit is placed for a few minutes.

**CAUTION - Do not** use mechanical devices or other artificial means to accelerate the defrosting process.

**CAUTION - Do not** damage the refrigerant circuit.

# Before Using the Appliance

## Switching on the appliance

- Before switching on, place the appliance in an upright position and wait at least three hours without moving the appliance. This will give the freezing circuit time to settle and operate efficiently.
- Clean the appliance thoroughly, especially the interior, before use (see Cleaning and Maintenance).
- Installation of the appliance and electrical connections must be carried out by a qualified technician in accordance with the installation manual and local regulations.
- The procedure for installation the appliance into the kitchen unit is given in the installation section of this manual. This product is only intended to be used in proper kitchen units.
- The appliance must be connected with a properly installed fused socket. Power supply (AC) and voltage at the operating point must comply with the details on the name plate of the appliance (the name plate is located on the inside-left of the appliance).
- Insert the plug into a socket with an efficient ground connection. If the socket has no ground contact or the plug does not match, we suggest you to call an authorised electrician for assistance.
- The manufacturer is not responsible for failure to complete the ground connection as described in this booklet.
- There can be an odour when you first switch on the appliance. It will disappear after the appliance starts to cool.
- The plug must be accessible following installation.

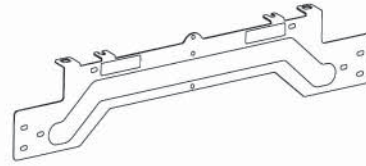
# Parts

Please check you have all of the attaching parts listed below

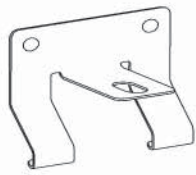
## Installation kit contents



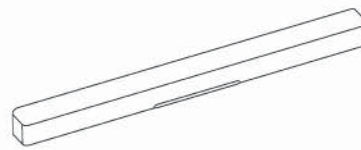
A. Wood screw x17



B. Door hang



C. Door Bottom Fixings x2



D. Hang cover

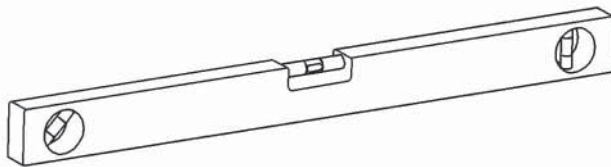


E. Screw

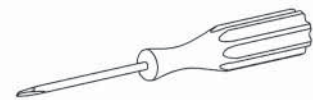


F. Top bracket

## Tools required



Spirit level



Screwdriver



Setsquare



Wrench

# Installation

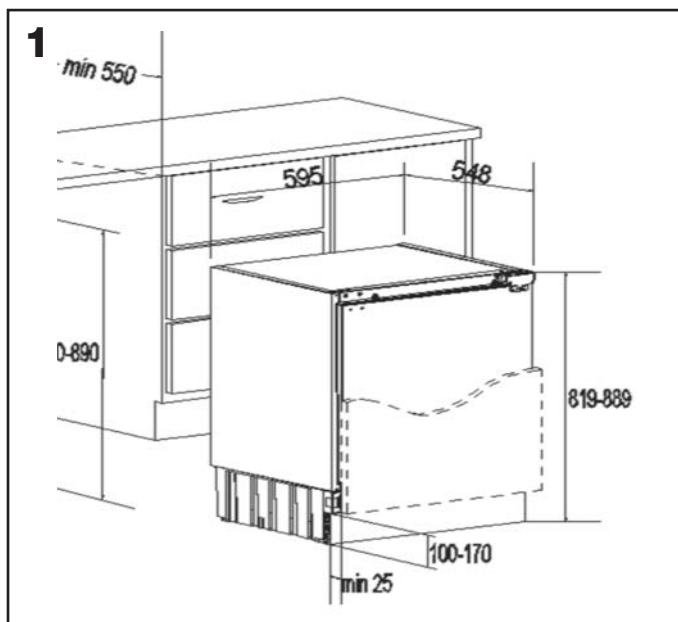
## Dimensions for installation



**Caution:** 2 people are required to unpack and handle the larder. It is recommended that gloves are worn.

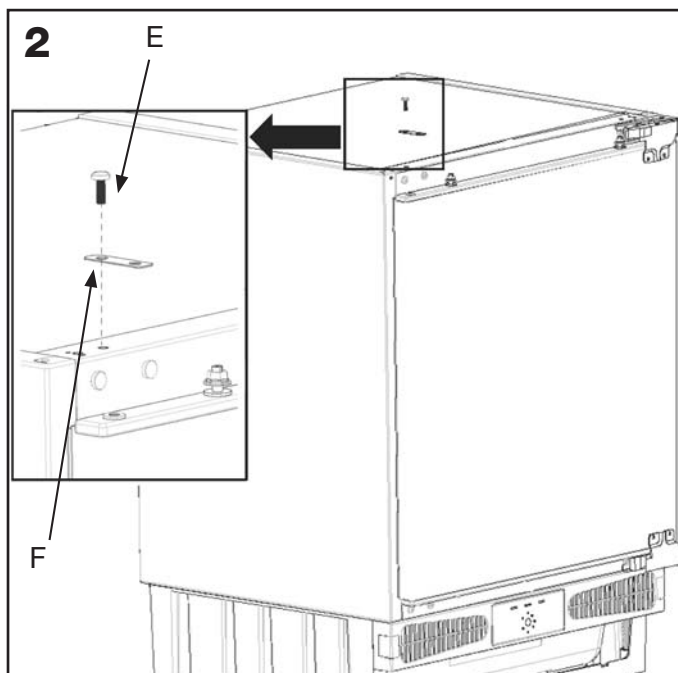
**a:** Carefully remove all packaging materials and dispose of correctly.

**b:** Make sure that the space available for the larder is large enough as per the dimensions (1).



## Installing top bracket

**a:** Remove the screw (E) on top of the larder, place the top bracket (F) in position and fix with the screw (E).

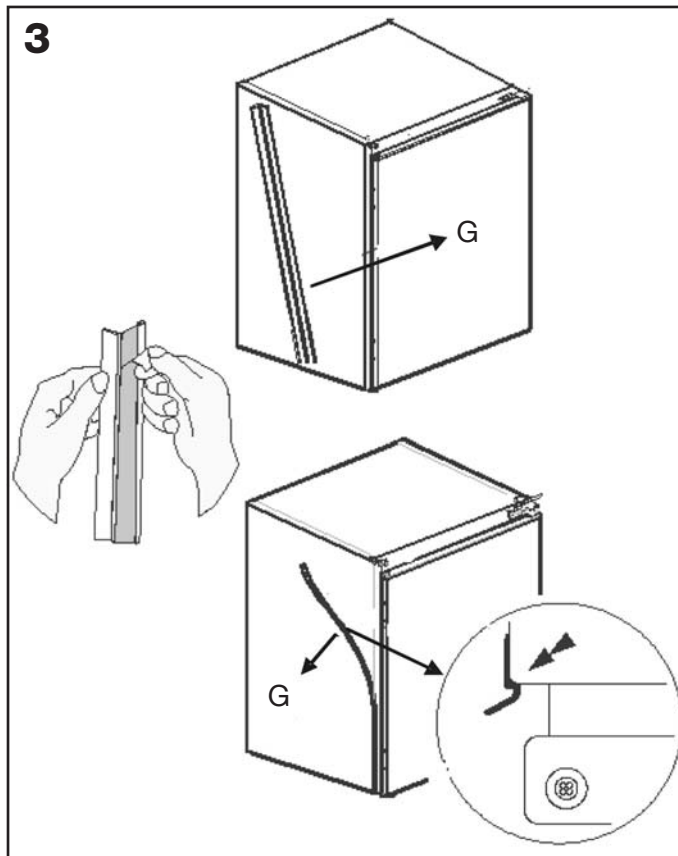


# Installation

## Height adjustment

**a:** Take out the gasket (**G**) located on the side panel, and remove the protective tape.

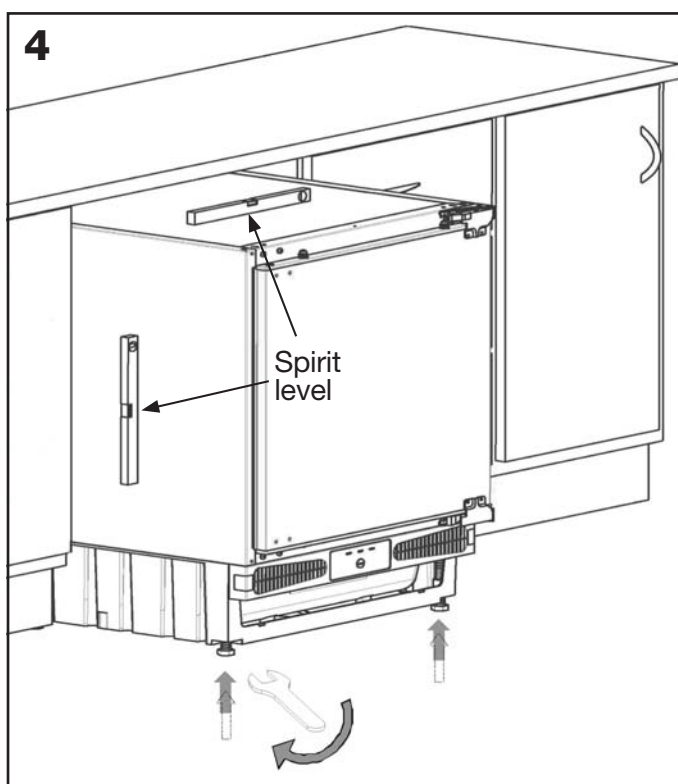
**b:** Stick the gasket (**G**) on the larder side panel, on the opposite side to the door hinges, as shown (**3**).



## Height adjustment

**a:** If necessary, the height of the larder can be adjusted, by loosening the locking nuts on the adjustable feet and screwing the feet in or out to the desired height. A wrench may be required to undo the locking nuts.

**b:** When the desired height is reached, re-tighten the locking nuts using the wrench to lock the adjustable feet in position.





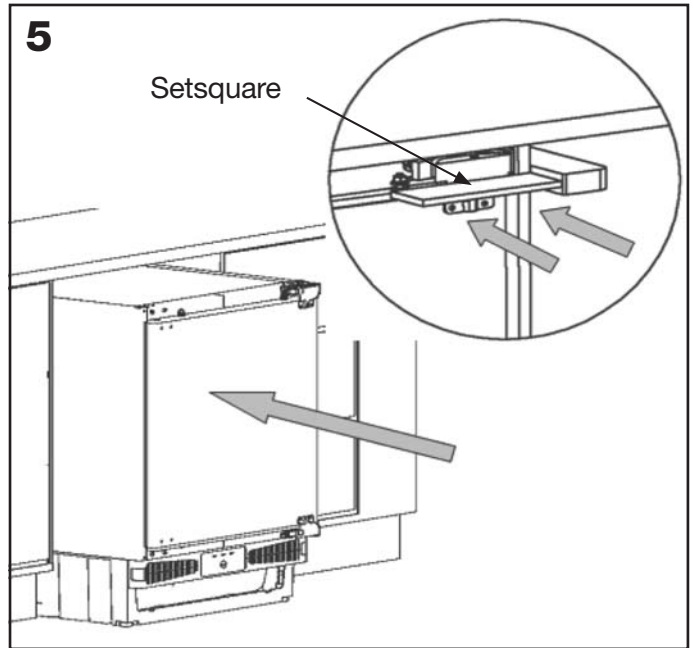
# Installation

## Position the larder



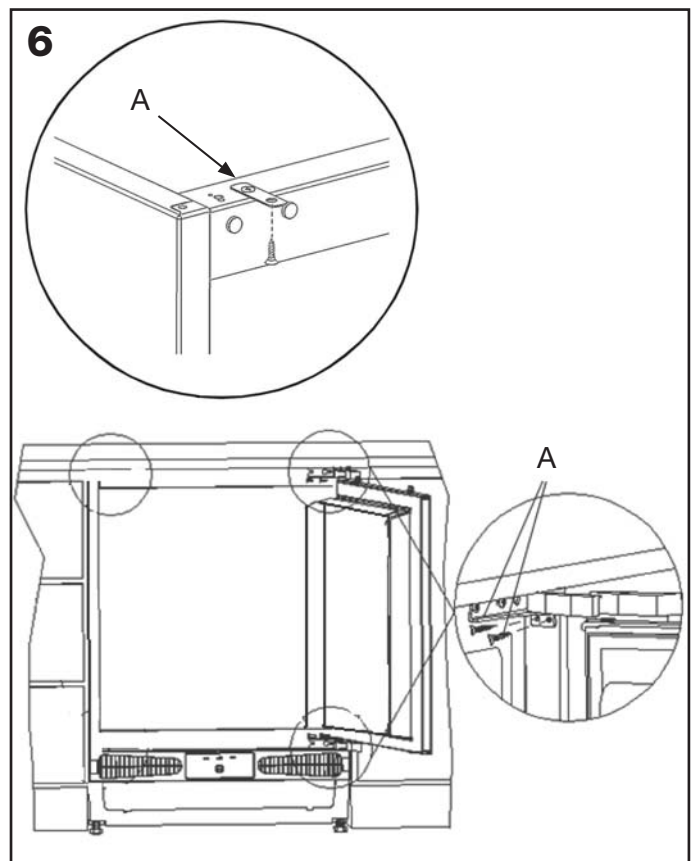
**Caution:** The larder may require 2 people to handle it when pushing it into position.

- a:** Check behind the larder to make sure there are no tools or obstructions that may cause damage.
- b:** Carefully slide the larder into position until the hinge surface is aligned with the front surface of the kitchen unit.
- c:** Check that the larder is square using the setsquare.



## Securing the larder

- a:** Screw the hinges and metal bracket to the kitchen unit using screws (**A**).



# Installation

**a:** Unscrew and remove the nuts and washers from the appliance door.

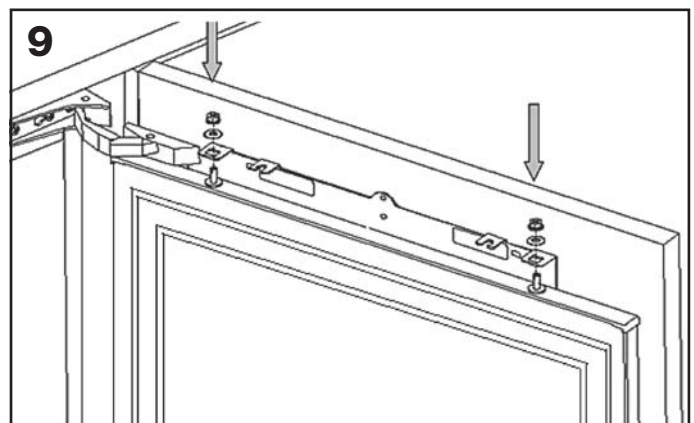
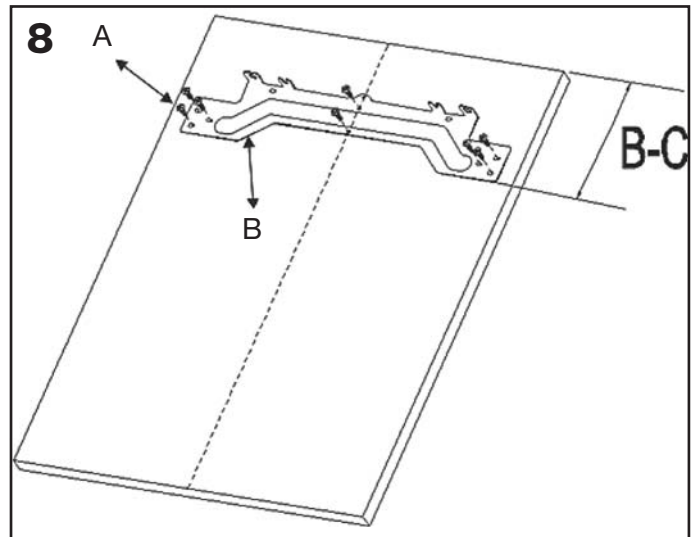
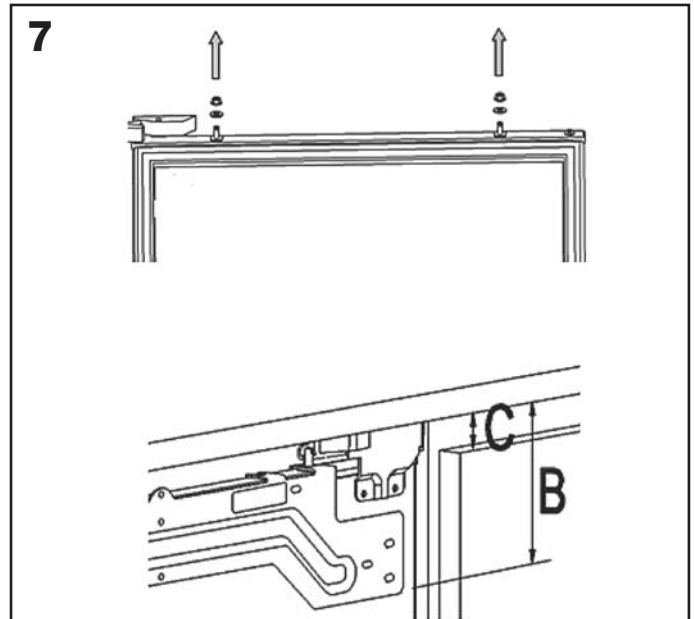
**b:** Place door hang (**B**) on the appliance door by inserting the holes to adjustment bolts.

**c:** Dimension B= Measure from the underside surface of kitchen unit to the bottom of door hang.  
Dimension C= Measure from the underside surface of kitchen unit to the top of next unit door.

**d:** Subtract C from B and place door hang (**B**) using this dimension for vertical position and place to the centre for horizontal position. Screw the door hang (**B**) using screws (**A**).

**e:** Place the cabinet door onto the appliance door by inserting adjustment bolts into the slots on the door hang (**B**). Place the washers and screw the nuts onto the adjustment bolts.

Continued on next page

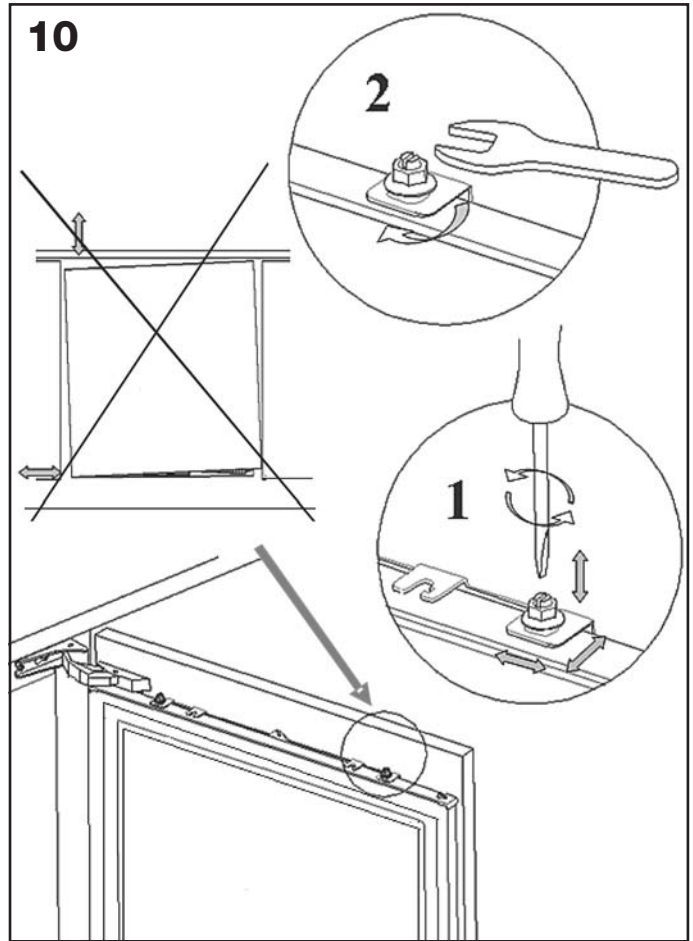


# Installation

**f:** Close the door and check the alignment with the other cabinet doors.

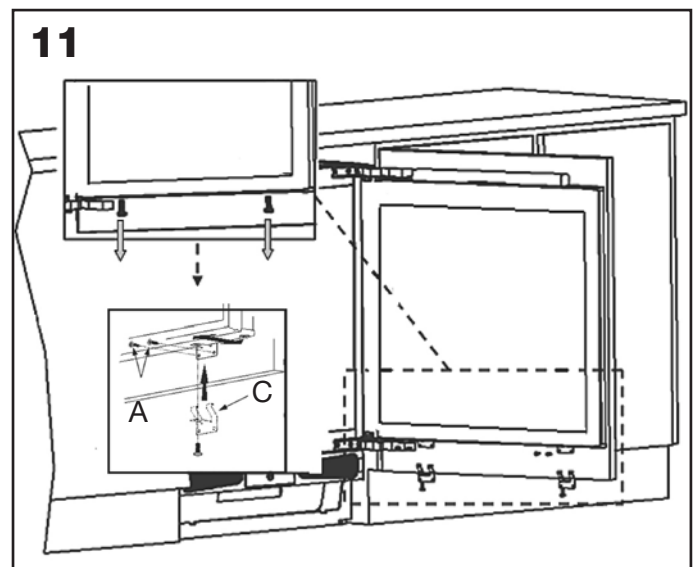
**g:** Make the adjustment of the unit door by screwing or unscrewing the adjustment bolts for vertical adjustment and by the help of the slots on the door hang for other directions.

**h:** Tighten the nuts to fix the bracket.



**i:** Remove the screws at the bottom of the appliance door.

**j:** Place the door bottom fixings (**C**) and screw the fixings to the appliance door and the cabinet door using screws (**A**).

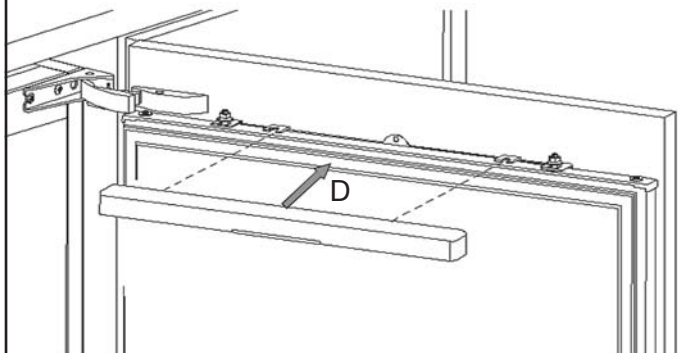


Continued on next page

# Installation

**k:** Slide the hang cover (**D**) onto the door hang (**B**).

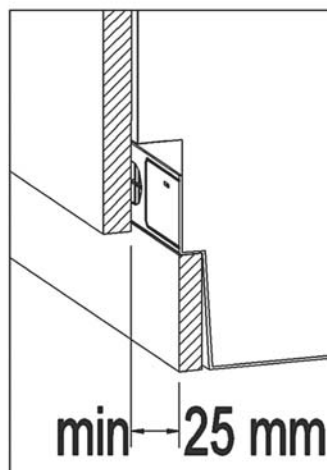
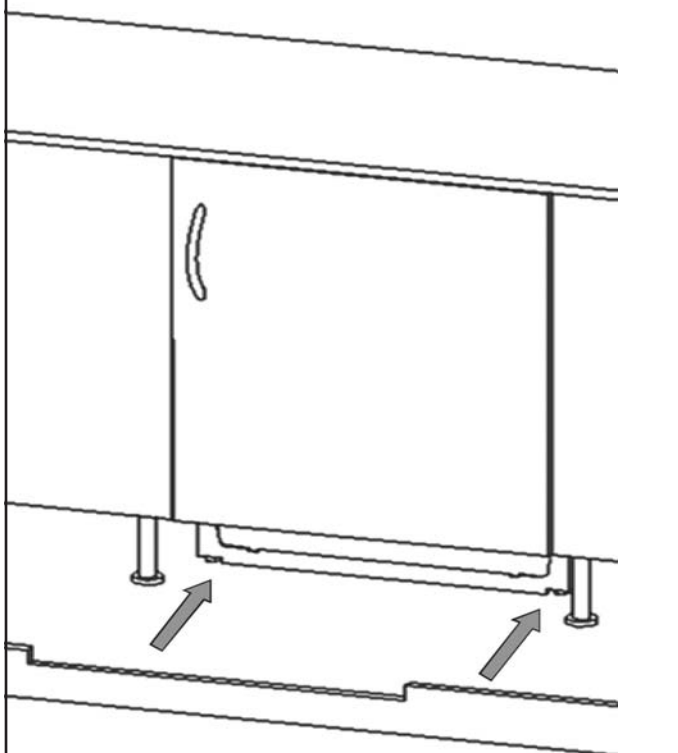
**12**



## Installing the plinth

**a:** Position the plinth providing minimum 25 mm gap between the cabinet door and fix it.

**13**

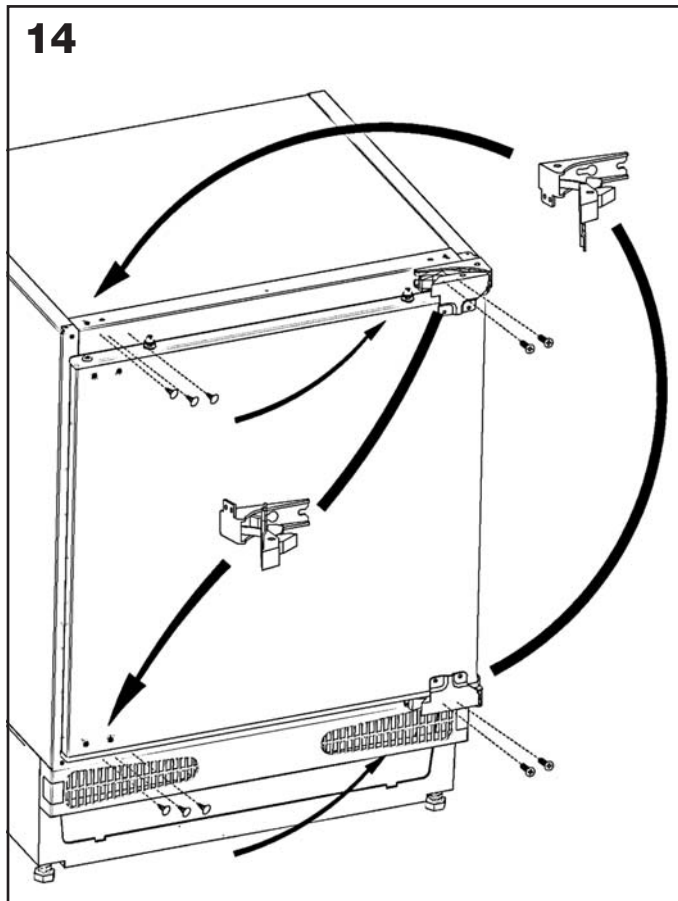


Continued on next page

# Installation

## Reversing the door

- a:** Unscrew the screws on the front surface of the appliance door. Take the appliance door to a safe place.
- b:** Move the hole plugs on the appliance door's front surface, to the holes on the reverse side.
- c:** Open the door upper hinge and door lower hinge, disassemble them.
- d:** Move the hole plugs to opposite side.
- e:** Assemble the door upper hinge and door lower hinge to the opposite corners of their original position.
- f:** Assemble the appliance door.

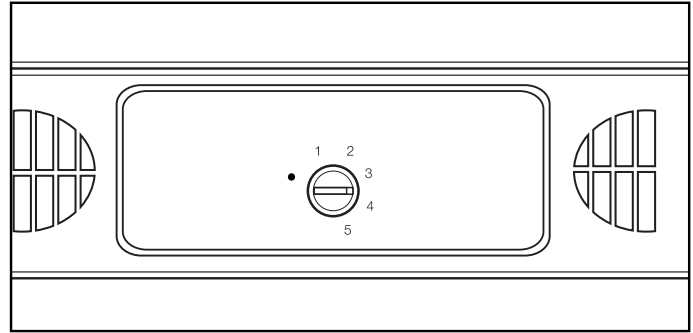


# User Instructions

## Thermostat setting

Do not try to rotate the knob beyond position 1 as it will stop your appliance.

- The thermostat automatically regulates the inside temperature of the larder. By rotating the knob from positions 1 to 5, colder temperatures can be obtained.
- For the short-term storage of food, set the larder knob between the minimum and medium position (1-3).
- For the long-term storage of food, set the larder knob to the medium position (3-4).
- Note that the ambient temperature (temperature of the freshly stored food and how often the door is opened) affects the temperature in the larder. If required, change the temperature setting.
- When you first switch on the appliance, you should ideally run it without any food for 24 hours and not open the door. If you need to use it straight away, try not to put too much food inside.
- If the unit is switched off or unplugged, you must allow at least 5 minutes before restarting to avoid damaging the compressor.



## Food storage in the appliance

The larder compartment is used for storing fresh food for a few days.

- **Do not** place food in direct contact with the rear wall of the larder compartment. Leave some space around food to allow for the circulation of air.
- **Do not** place hot food or evaporating liquids in the larder.
- Always store food in closed containers or wrapped.
- To reduce humidity and avoid the formation of frost, never place liquids in unsealed containers in the larder.
- Meat of all types, wrapped in packages, is recommended to be placed on the glass shelf just above the vegetable bin, where the air is colder.
- You can put fruits and vegetables into the crisper without packaging.
- To prevent cold air escaping, try not to open the larder door too often, and do not leave the door open for long periods.

## If your larder is not cold enough

Your larder is designed to operate in the ambient temperature intervals stated / in accordance with the climate class stated on the information label. In terms of cooling effectiveness, we do not recommend operating your larder outside of the stated temperature values.

Climate Class	
T	Between 16 and 43 (°C)
ST	Between 16 and 38 (°C)
N	Between 16 and 32 (°C)
SN	Between 10 and 32 (°C)

# Cleaning and Maintenance

## General



**Warning:** Disconnect the appliance from the power supply before cleaning.

- **Do not** pour water over the appliance.
- The larder compartment should be cleaned periodically using a solution of bicarbonate of soda and lukewarm water.
- Clean the accessories separately with soap and water. Do not put them in the dishwasher.
- **Do not** use abrasive products, detergents or soaps. After washing, rinse with clean water and dry carefully. When cleaning operations have been completed, reconnect the plug with **dry hands**.

## Defrosting the larder

- Defrosting occurs automatically in the larder during operation. The defrost water is collected by the evaporating tray and evaporates automatically.
- The defrost water drain hole should be cleaned periodically along with the defrost drain plug to prevent water from collecting on the bottom of the larder instead of flowing out.
- You can also pour ½ glass of water into the drain hole to clean it inside.

## Replacing the light bulb

When replacing the bulb of the larder:

1. Unplug the unit from the power supply.
2. Press the hook in front of the light cover to remove it (see Figure 1 and Figure 2).
3. Replace the light bulb with a new one; maximum power 15w.
4. Replace the light cover then wait 5 minutes before inserting plug back into the power supply.



Figure 1

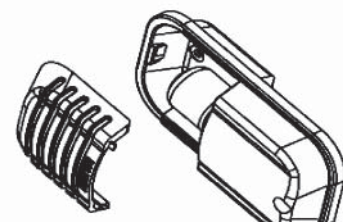


Figure 2

# Trouble Shooting

If your larder is not working properly there may be a minor problem, therefore check the following.

Problem	Possible Causes	Possible Solutions
The appliance does not operate	<p>There is a power failure</p> <p>The mains plug is not properly plugged in, or is loose</p> <p>The thermostat setting is on position "0"</p>	The socket is defective. To check this, plug in a fully operable appliance into the same socket
The appliance performs poorly	<p>You have overloaded the appliance</p> <p>The doors are not closed perfectly</p>	There are not enough ventilation ducts on the kitchen unit as mentioned in the Installation section of this instruction manual
There is a noise	<p>The cooling gas which circulates in the larder circuit may make a slight noise (bubbling sound) even when the compressor is not running. Do not worry, this is quite normal. If these sounds are different check if</p> <ul style="list-style-type: none"> <li>• The appliance is installed firmly as described in the section of this instruction manual</li> <li>• Objects on the appliance are vibrating</li> </ul>	

## IMPORTANT NOTES

- In case of a sudden power loss or disconnecting/reconnecting of the plug to the electrical socket, the compressor's protective thermal element will be opened as the pressure of the gas in the cooling system of your larder has not yet been balanced. 4 or 5 minutes later, your larder will start to operate; this is normal.
- If you will not be using your larder for a long period (holiday etc.), disconnect the plug from the socket. Clean your larder as per page 15 of this document and leave the door open to prevent any humidification or odour forming. If there is still a problem with your larder despite following the instructions in this manual, please consult your nearest authorised service centre, or the **Customer Helpline on 0845 600 4632**.

The life-cycle of this product, as determined and proclaimed by the Ministry of Industry (the period for making spare parts available for the product to be able to fulfil its function), is 10 years.

## Conformity Information

- Normal Class is defined as environment temperatures between 16°C and 32°C in accordance with TS EN ISO 15502 standards.
- The appliance is designed in compliance with EN15502, IEC60335-1/IEC60335-2-24, 2004/108/EC standards.



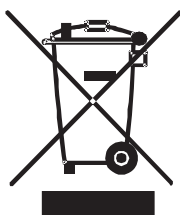
# Technical Specifications

Model / Item	BUCL6082
Supplier's name or trademark	BUSH
Supplier's model	BUCL6082
Type of appliance	BGSN1700DOD
The energy efficiency class	A+
Voltage	220-240V - 50Hz
Power	85 W
Current	0,58 A
Energy consumption	0,316 kW/24h / 115 kW/year
Net storage volume of fresh food	133 l
Net storage volume of frozen food	-
Star rating of frozen food storage compartment	-
Refrigeration system	Static
Power cut safe Z h (-18°C to -9°C)	-
Freezing capacity	-
Climate class	SN (10 °C - 32 °C)
Size (WxDxH)	595 x 548 x 818 mm
Net weight	31 Kg
Noise	44 dB(A)

We apologise for any inconvenience caused by minor inconsistencies in these instructions that may occur as a result of product improvements and development.



## Disposal information



The symbol on the product or on its packaging indicates that this product may not be treated as household waste. Instead, it should be handed over to applicable collection locations for the recycling of electrical and electronic equipment.

By ensuring this product is disposed of correctly, you will help prevent potential negative consequences for the environment and human health, which could otherwise be caused by the inappropriate waste handling of this product. For more detailed information about the recycling of this product, please contact your local city office, your household waste disposal service or the shop where you purchased the product.

# Tips for Saving Energy

1. Install the appliance in a cool, well-ventilated room, but not in direct sunlight and not near a heat source (radiator, cooker etc.). Otherwise, use an insulating plate.
2. Allow food and drink to cool down outside of the appliance.
3. When thawing frozen food, place it in the larder compartment. The low temperature of the frozen food will help to cool the larder compartment when it is thawing, thus saving energy. If frozen food is put out it causes energy wastage.
4. When placing drinks and other liquids inside the larder they must be covered; otherwise humidity increases in the appliance and working time increases. Covering drinks and other liquids also helps to preserve their smell and taste.
5. When placing food and drink inside the larder open the appliance door as briefly as possible.
6. Keep the different temperature compartment covers closed (crisper, chiller etc.).
7. The door gasket must be clean and pliable. Replace gaskets if worn.
8. Occasionally clean the rear of the appliance with a vacuum cleaner or paint brush to prevent increased power consumption.

# Guarantee



## Product Guarantee

This product is guaranteed against manufacturing defects for a period of



This product is guaranteed for twelve months from the date of original purchase. Any defect that arises due to faulty materials or workmanship will either be replaced, refunded or repaired free of charge where possible during this period by the dealer from whom you purchased the unit.

The guarantee is subject to the following provisions:

- The guarantee does not cover accidental damage, misuse, cabinet parts, knobs or consumable items.
- The product must be correctly installed and operated in accordance with the instructions contained in this manual.
- It must be used solely for domestic purpose.
- The guarantee will be rendered invalid if the product is re-sold or has been damaged by inexpert repair.
- Specifications are subject to change without notice.
- The manufacturer disclaims any liability for the incidental or consequential damages.
- The guarantee is in addition to, and does not diminish your statutory or legal rights.
- In the event of a problem with the product within the guarantee period call the Customer Helpline: **0845 600 4632**.

Guarantor: Argos Ltd  
489 - 499 Avebury Boulevard  
Central Milton Keynes  
MK9 2NW

