



Technical specification

Product title	CUGGL ISIZE BOOSTER SEAT
Argos Cat. No.	4544335
Supplier Ref. No.	98515
Height group	125cm - 150cm
Safety compliance	Car seat complies with ECE R129
Product weight	3kg
Product unfolded size	L44.5 x W41 x H25cm

If you encounter any problems with this product please call our customer care team on 0345 640 2020

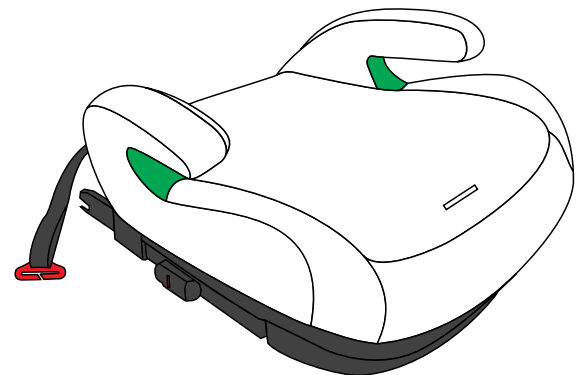
Made in China,
Argos Limited London , EC1N 2HT
Argos (N.I.) Ltd, Forestside Shopping Centre,
Upper Galwally, Belfast, United Kingdom, BT8 6FX



CUGGL ISIZE BOOSTER SEAT

For infants of height ranges from 125cm to 150cm

care & instruction manual



IMPORTANT, RETAIN FOR FUTURE REFERENCE: READ CAREFULLY

Cat No: 4544335



IMPORTANT, RETAIN FOR FUTURE REFERENCE: READ CAREFULLY

⚠ WARNING

- The rigid items and plastic parts of an Enhanced Child Restraint System shall be so located and installed that they are not liable, during everyday use of the vehicle, to become trapped by a movable seat or in a door of the vehicle.
- Any straps holding the restraint to the vehicle should be tight, any support-leg should be in contact with the vehicle floor, any straps or impact shields restraining the child should be adjusted to the child's body, and straps should not be twisted .
- It is important to ensure that any lap strap is worn low down.
- The Enhanced Child Restraint System should be replaced when it has been subject to violent stresses in an accident.
- It is dangerous to make any alterations or additions to the device without the approval of the Type Approval Authority, and it is also danger not following closely the installation instructions provided by the Enhanced Child Restraint System manufacturer.
- Be sure that children are not left in their Enhanced Child Restraint System unattended.
- Be sure that any luggage or other objects liable to cause injuries in the event of a collision shall be properly secured.
- Be sure that the Enhanced Child Restraint System shall not be used without the cover.
- Be sure that the Enhanced Child Restraint System cover should not be replaced with any other than the one recommended by the manufacturer, because the cover constitutes an integral part of the restraint performance.



Product description

Product description	Group	Installation
Booster seat	125-150cm	3-point-belt
Booster seat	125-150cm	FIT+3-point-belt

NOTICE

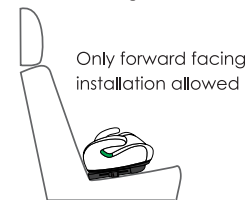
This is a specific vehicle booster cushion Enhanced Child Restraint System. It is approved according to UN Regulation No. 129, for use in the specific vehicle indicated in the applicable vehicle list. If in doubt, consult either the Enhanced Child Restraint System manufacturer or the retailer.

125-150cm: FIT connectors+adult safety-belt or adult safety-belt only.

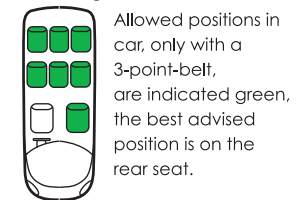
Important

⚠ Forward facing installation only

Forward facing installation



Positioning in car

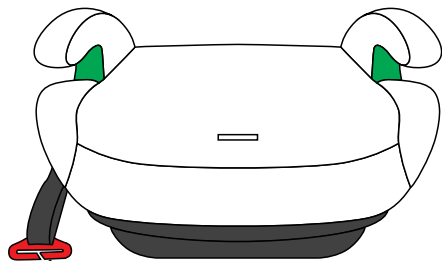


Second-hand car seats

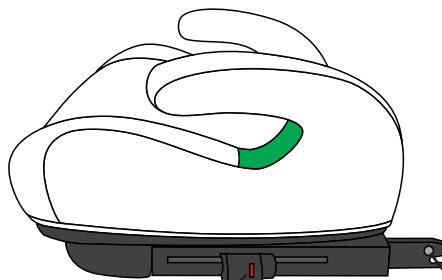
We advise that child seats should not be bought or sold second-hand. Many second-hand car seats have been found to be dangerous.



Know your booster seat



Seat belt hook



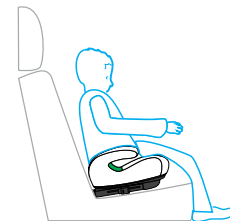
FIT release button

FIX connectors

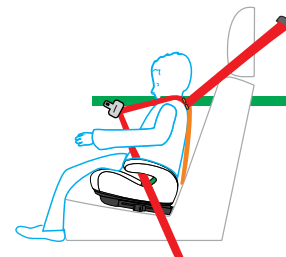


Installation in the vehicle with 3 point belt

1 Place the child in the seat.



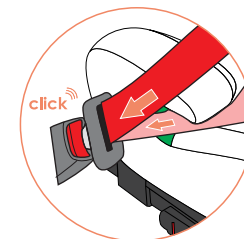
2 Shoulder strap guide hook must be adjusted so that the shoulder straps are at the same level as your child's shoulders (Show as in the green area), and pull tightly.



3 Fasten the safety buckle (Click)

⚠ Make sure the belt is not twisted.

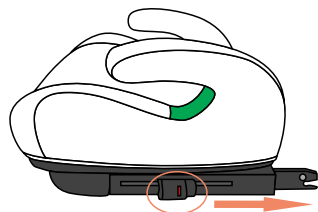
⚠ The lap belt should be worn over the hips.



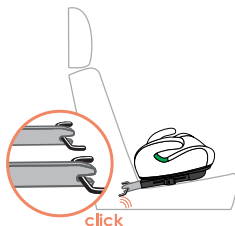


Installation in the vehicle with FIT connectors and 3 point belt

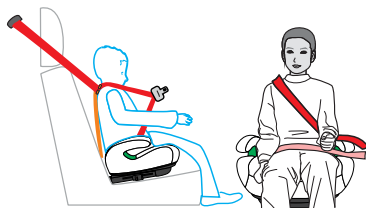
- 1** Extend the FIT connectors to a suitable position in the direction shown in the diagram.



- 2** Push the booster seat towards the anchorages in your car seat. Make sure you hear a clear "click" sound, indicating it is locked into position.



- 3** Place the child in the seat. Fasten the safety buckle (click).



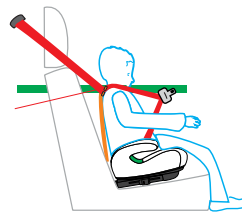
Cat No: 4544335



Precautions for wearing seat belts

- 1** Please ensure that the seat belt is placed in the green area.

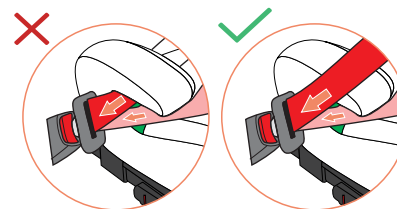
The shoulder strap guide hook must be adjusted so that the shoulder straps are at the same level as your child's shoulders (Show as in the green area), and pull tightly.



- 2** Please make sure the belt is on the child's pelvis.



- 3** Please make sure that the seat belt has passed through the shoulder belt guide hook and waist belt guide groove at the same time.



Cat No: 4544335



Removing the cover

- 1 Separate the cloth cover from the base according to the direction of the arrow



CAUTION

The cover is a safety feature. Never use the child car seat without it.

Refitting the cover

Use the previous instructions in reversed order to refit the cover.



CLEANING

Please be sure to use only original Cuggl replacement seat covers, as the seat cover is important to the proper functioning of the system. Replacement seat covers are available from Argos.

⚠ The child seat must not be used without the seat cover.

- The cover can be removed and hand washed at 30°C with a mild detergent. Please observe the instructions on the washing label of the cover. The colours of the cover may fade if washed at more than 30°C. Never tumble dry in an electric clothes dryer (the fabric may separate from the padding).
- The plastic parts can be cleaned using soapy water. Do not use harsh cleaning agents (such as solvents).
- The harness can be removed and washed in lukewarm soapy water.

Caution! Never remove the buckle tongues from the straps.