

Fig.1

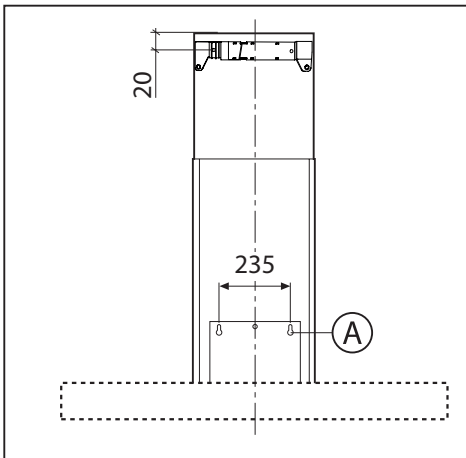


Fig.2

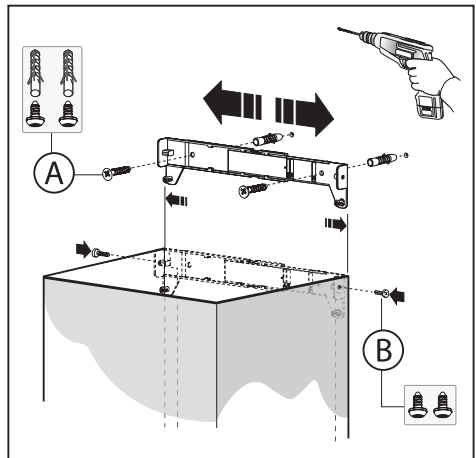


Fig.3

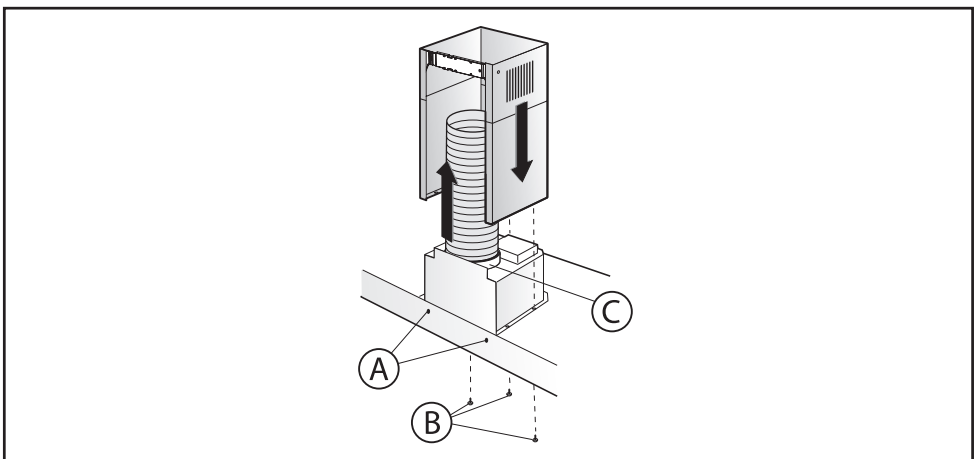
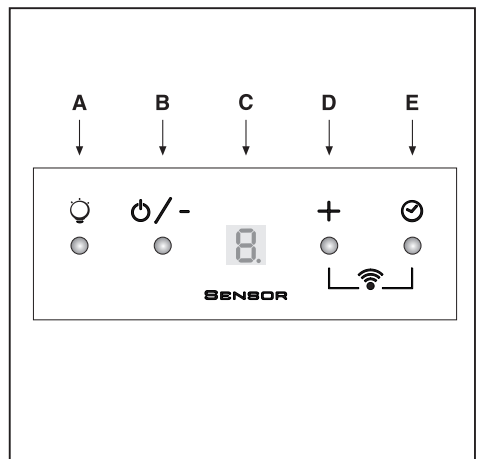
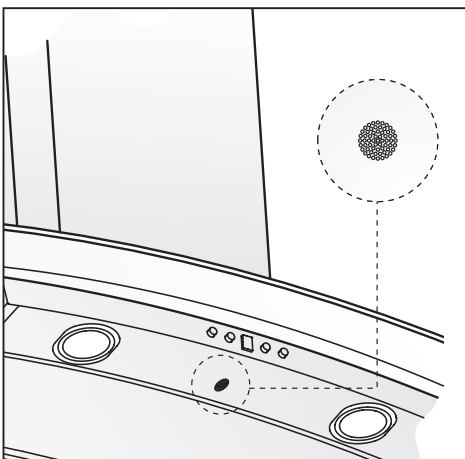
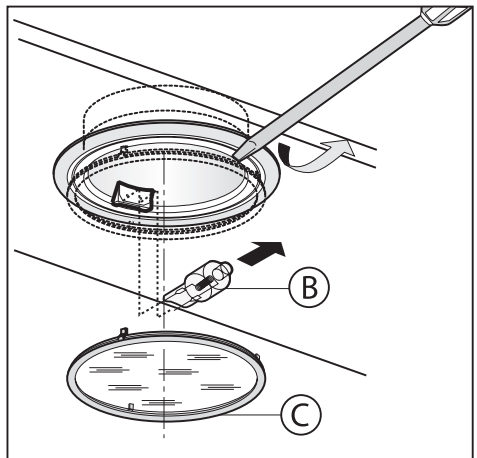
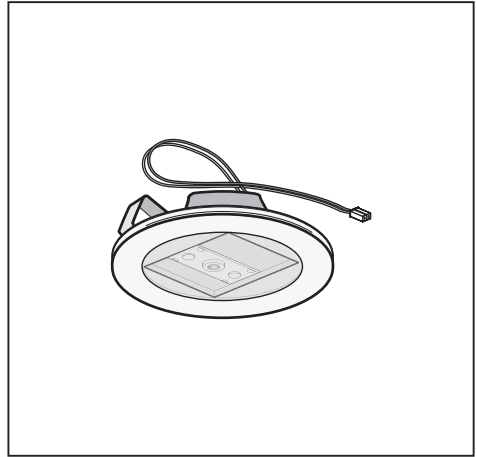
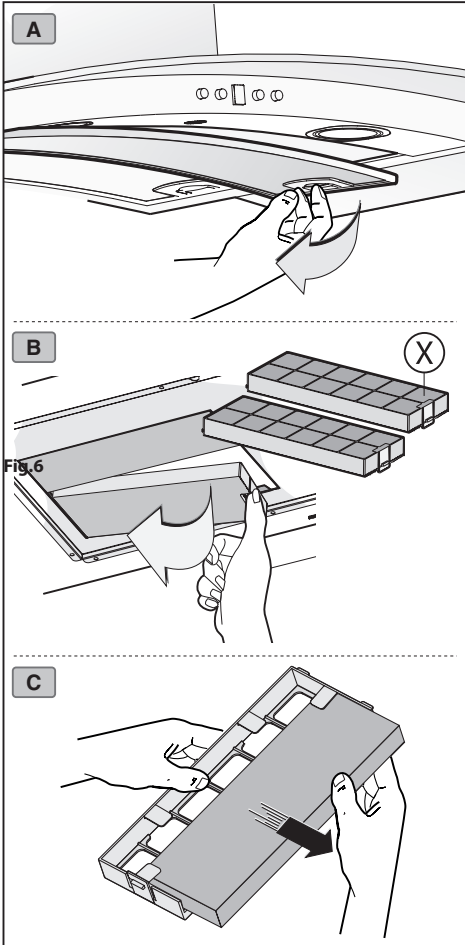


Fig.4



ctionnement en cours s'afficheront, de manière alternative, sur l'écran, les filtres au charbon doivent être remplacés. En appuyant pendant quelques secondes sur la touche "A", la fonction est réinitialisée.

SERVICE ASSISTANCE CLIENTS

Avant de faire appel au service d'assistance technique. En cas de non fonctionnement du produit, nous vous conseillons de:
- Vérifier que la fiche est bien enfoncée dans la prise de courant. Si vous n'arrivez pas à identifier la cause du mauvais fonctionnement: mettez l'appareil hors tension et appelez le service d'assistance technique. N'essayez surtout pas de le réparer vous-même.

NUMÉRO DE SÉRIE DU PRODUIT. Où se trouve-t-il?

Il est important de communiquer au service d'assistance technique le sigle du produit ainsi que son numéro de série (16 caractères commençant par le chiffre 3) que vous trouverez dans le certificat de garantie ou bien sur la plaque d'immatriculation située à l'intérieur de l'appareil. Vous éviterez ainsi que le technicien n'effectue des déplacements inutiles et économiserez par la même occasion sur les frais correspondants.

NOUS DECLINONS TOUTE RESPONSABILITE POUR LES EVENTUELS DÉGATS PROVOQUÉS PAR L'INOBSERVATION DES SUSDITES INSTRUCTIONS.

ENGLISH

GB

GENERAL

Carefully read the following important information regarding installation safety and maintenance. Keep this information booklet accessible for further consultations. The appliance has been designed for use in the ducting version (air exhaust to the outside - Fig.1B), filtering version (air circulation on the inside - Fig.1A) or with external motor (Fig.1C).

SAFETY PRECAUTION

1. Take care when the cooker hood is operating simultaneously with an open fireplace or burner that depend on the air in the environment and are supplied by other than electrical energy, as the cooker hood removes the air from the environment which a burner or fireplace need for combustion. The negative pressure in the environment must not exceed 4Pa (4x10⁻⁵ bar). Provide adequate ventilation in the environment for a safe operation of the cooker hood. Follow the local laws applicable for external air evacuation.

Before connecting the model to the electricity network:

-Control the data plate (positioned inside the appliance) to ascertain that the voltage and power correspond to the network and the socket is suitable. If in doubt ask a qualified electrician.
-If the power supply cable is damaged, it must be replaced with another cable or a special assembly, which may be obtained direct from the manufacturer or from the Technical Assistance Centre.
-This device must be connected to the supply network through either a plug fused 3A or hardwired to a 2 fase spur protected by 3A fuse.

2. Warning!

In certain circumstances electrical appliances may be a danger hazard.

- A) Do not check the status of the filters while the cooker hood is operating.
- B) Do not touch bulbs or adjacent areas, during or straight after prolonged use of the lighting installation.
- C) Flambè cooking is prohibited underneath the cooker hood.
- D) Avoid free flame, as it is damaging for the filters and a fire hazard.
- E) Constantly check food frying to avoid that the overheated oil may become a fire hazard.
- F) Disconnect the electrical plug prior to any maintenance.
- G) This appliance is not intended for use by young children or infirm persons without supervision.
- H) Young children should be supervised to ensure they do not play with the appliance.
- I) There shall be adequate ventilation of the room when the rangehood is used at the same time as appliances burning gas or other fuels.
- L) There is a risk of fire if cleaning is not carried out in accordance with the instructions.

This appliance conforms to the European Directive EC/2002/96, Waste Electrical and Electronic Equipment (WEEE). By making sure that this appliance is disposed of in a suitable manner, the user is helping to prevent potential damage to the environment or to public health.





The symbol on the product or on the accompanying paperwork indicates that the appliance should not be treated as domestic waste, but should be delivered to a suitable electric and electronic appliance recycling collection point. Follow local guidelines when disposing of waste. For more information on the treatment, re-use and recycling of this product, please contact your local authority, domestic waste collection service or the shop where the appliance was purchased.

INSTALLATION INSTRUCTIONS

- Assembly and electrical connections must be carried out by specialised personnel.
- Wear protective gloves before proceeding with the installation.

• Electric Connection:

Note! Verify the data label placed inside the appliance:
- If the symbol  appears on the plate, it means that no earth connection must be made on the appliance, therefore follow the instructions concerning insulation class II.
- If the symbol  DOES NOT appear on the plate, follow the instructions concerning insulation class I.

Insulation class II

-The appliance has been manufactured as a class II, therefore no earth cable is necessary. The plug must be easily accessible after the installation of the appliance. If the appliance is equipped with power cord without plug, a suitably dimensioned omnipolar switch with 3 mm minimum opening between contacts must be fitted between the appliance and the electricity supply in compliance with the load and current regulations.
-The connection to the mains is carried out as follows:
BROWN = L line
BLUE = N neutral.

Insulation class I

This is a class I, appliance and must therefore be connected to an efficient earthing system.

- The appliance must be connected to the electricity supply as follows:

BROWN = L line

BLUE = N neutral

YELLOW/GREEN = ⊕ earth.

The neutral wire must be connected to the terminal with the N symbol while the YELLOW/GREEN, wire must be connected to the terminal by the earth symbol ⊕.

When connecting the appliance to the electricity supply, make sure that the mains socket has an earth connection. After fitting the ducted cooker hood, make sure that the electrical plug is in a position where it can be accessed easily. If the appliance is connected directly to the electricity supply, an omnipolar switch with a minimum contact opening of 3 mm must be placed in between the two; its size must be suitable for the load required and it must comply with current legislation.

- If the hob is electric, gas, or induction, the minimum distance between the same and the lower part of the hood must be at least **65 cm**. If a connection tube composed of two parts is used, the upper part must be placed outside the lower part. Do not connect the cooker hood exhaust to the same conductor used to circulate hot air or for evacuating fumes from other appliances generated by other than an electrical source. Before proceeding with the assembly operations, remove the anti-grease filter(s) (Fig.5A) so that the unit is easier to handle.
- In the case of assembly of the appliance in the suction version prepare the hole for evacuation of the air.

- We recommend the use of an air exhaust tube which has the same diameter as the air exhaust outlet hole. If a pipe with a smaller diameter is used, the efficiency of the product may be reduced and its operation may become noisier.

• Fixing to the wall:

- Drill the holes **A** respecting the distances indicated (Fig.2).
- Fix the appliance to the wall and align it in horizontal position to the wall units.

- When the appliance has been adjusted, definitely fix the hood using the screws **A** (Fig.4).

For the various installations use screws and screw anchors suited to the type of wall (e.g. reinforced concrete, plasterboard, etc.). If the screws and screw anchors are provided with the product, check that they are suitable for the type of wall on which the hood is to be fixed.

• Fixing the decorative telescopic flue:

- Arrange the electrical power supply within the dimensions of the decorative flue. If your appliance is to be installed in the ducting version or in the version with external motor, prepare the air exhaust opening.

- Adjust the width of the support bracket of the upper flue (Fig.3).

- Then fix it to the ceiling using the screws **A** (Fig.3) in such a way that it is in line with your hood and respecting the distance from the ceiling indicated in Fig.2.

- Connect the flange **C** to the air exhaust hole using a connection pipe (Fig.4).

- Insert the upper flue into the lower flue.

- Fix the lower flue to the hood using the screws **B** provided (Fig.4), extract the upper flue up to the bracket and fix it with the screws **B** (Fig.3).

To transform the hood from a ducting version into a filtering version, ask your dealer for the charcoal filters and follow the installation instructions.

• Filter hood:

Please note:

- In order to transform the hood from **EXTRACTOR HOOD** into **FILTER HOOD** the active carbon filters must be ordered at your distributor as accessory.

We have two different types of Kit, one with non-regenerable active carbon filters (Fig.5B) and the other one with regenerable active charcoal filters (washable) (Fig.5C).

- To replace the non-regenerable active carbon filters **X**, pull lever outwards as shown in Fig.5B.

USE AND MAINTENANCE

- We recommend that the cooker hood is switched on before any food is cooked. We also recommend that the appliance is left running for 15 minutes after the food is cooked, in order to thoroughly eliminate all contaminated air. The effective performance of the cooker hood depends on constant maintenance; the anti-grease filter and the active carbon filter both require special attention.

- **The anti-grease filter** is responsible retaining the grease particles suspended in the air, therefore it is subject to clogging with variable frequency according to the use of the appliance.

- To prevent the danger of possible fires, at least every 2 months one must wash the anti-grease filters by hand using non-abrasive neutral liquid detergents or in the dishwasher at low temperatures and on short cycles.

- After a few washes, colour alterations may occur. This does not give the right to claim their replacement.

- **The active carbon filters** are used to purify the air that is sent back into the room and its function is to mitigate the unpleasant odours produced by cooking.

- The non-regenerable active carbon filters must be replaced at least every 4 months. The saturation of the active charcoal depends on the more or less prolonged use of the appliance, on the type of kitchen and on the frequency with which anti-grease filter is cleaned.

- Regenerable active charcoal filters must be washed by hand, with non abrasive neutral detergents, or in the dishwasher at a maximum temperature of 65°C (the washing cycle must be complete without dishware). Remove excess water without damaging the filter, remove the plastic parts, and let the mat dry in the oven for at least 15 minutes approximately at a maximum temperature of 100°C. To keep the regenerable charcoal filter functioning efficient this operation must be repeated every 2 months. These must be replaced at least every 3 years or when the mat is damaged.

- **Before remounting the anti-grease filters and the regenerable active charcoal filters it is important that they are completely dry.**

- **Clean the hood frequently, both internally and externally, using a cloth dampened with denatured alcohol or neutral liquid detergents that are non abrasive.**

- The lighting system is designed for use during cooking and not for the prolonged general lighting of the room. The prolonged use of the lighting system significantly decreases the average duration of the bulbs.

- If the appliance is equipped with courtesy lights it is possible to use them for general room lighting for a prolonged amount of time.

- **Attention:** the non compliance with the hood cleaning warnings and with the replacement and cleaning of the filters entails risk of fires. One therefore recommends keeping to the suggested instructions.

• Replacing halogen light bulbs (Fig.7):

- To replace the halogen light bulbs **B**, remove the glass pane **C** using a lever action on the relevant cracks. Replace the bulbs

with new ones of the same type. **Caution:** do not touch the light bulb with bare hands.

• Replacing LED lamps (Fig.6):

If the appliance version is with LED lamps, the intervention of a specialised technician is necessary to replace them.

• Commands (Fig.9):

Button A = Switches the lights On/Off. The "filter alarm" can be reset by pressing the button for a few seconds.

Button B = Switches the appliance on/Decreases the extraction rate of the motor. If the speed of the cooker hood is set to 1, it switches off.

Automatic extraction function: With this function the appliance automatically adjusts the motor's extraction rate according to the quality of the air below thanks to the sensor located under the cooker hood (Fig.8).

To activate this function, press the "B" button for a few seconds. The letter "S" will appear on the display.

When the hood is switched on, before automatic suction is enabled, you must wait a period of time depending on the sensor's type of setting. When this is not yet active, the decimal point on the display will flash.

When the function is active, the suction power of the motor cannot be modified manually.

At the end of the motor's operating cycle, with the automatic function active, if the hood does not re-start within 10 minutes it will be permanently switched off.

This same situation occurs if the function is activated and the motor does not start operating within 10 minutes.

Setting the sensor: According to the type of hob (gas or electric) it is possible to increase the effectiveness of the sensor by matching the cooker hood with the right hob.

To carry out this operation, press the "B" and "D" buttons together for a few seconds with the motor off.

- To match the cooker hood with a gas hob, press the "B" button. A "P" and a "O" will alternate on the display.

- To match the cooker hood with an electric hob, press the "D" button. A "P" and a "1" will alternate on the display.

To complete the setting, press the "B+D" buttons for a few seconds.

The appliance has already been set for an electric hob by the manufacturer.

Intensive: This function allows you to temporarily increase the motor's extraction rate for about 6 minutes. To activate the function, press the "D" button after selecting extraction rate level 3. After 6 minutes, the appliance will return to operate at extraction rate level 3. During this function the letter "P" will be displayed.

Timer: This function allows you to set the operating time of the appliance to about 15 minutes, even if the speed is modified later, which then switches off at the end. To activate the function press the "E" button; the decimal point on the display will start to flash. The timer and the intensive function cannot be activated at the same time. The timer does not interact with the lights. To deactivate the function, set the extraction rate level back to "0".

Carbon filter: Carbon filters are used to purify the air which is released back into the room. The filters are not washable or re-usable and must be replaced at least once every four months. Saturation levels of carbon filters depend on the frequency with which the appliance is used, the type of cooking performed and how often the anti-grease filters are cleaned. To activate the filter alarm function, press the "A+E" buttons together.

- To activate the carbon filter alarm, press the "D" button. An "A" and a "1" will alternate on the display.

- To deactivate the carbon filter alarm, press the "B" button. An "A" and a "0" will alternate on the display.

To deactivate this function, press the "A+E" buttons together with the motor off.

Button C = The display shows the extraction rate of the motor and all the functions of the buttons mentioned above.

Button D = Increases the motor speed.

Enabling/disabling WiFi: The appliance can be controlled remotely with external devices. To enable the function press "D+E" buttons for 3 seconds. "0" will be displayed and the "Read only" function is active. If "D+E" buttons are pressed for 6 seconds, the "write" function is activated and "1" is displayed. If the WiFi module has to be Reset, press "D+E" for at least 10 seconds; "R" will be displayed.

Monitoring function: This function allows the appliance to monitor the environment for an indefinite time. In case of sudden variations in the status of the air or unexpected combustions, the hood will send to the connected external devices an alarm and a flashing "A" will be displayed. To activate the function keep "E" pressed and three horizontal lines will be displayed. A decimal point will flash until the sensor is stabilised. Press any key to deactivate the function.

Deterrent function: This function simulates the presence of people in the residence. The appliance will switch the lights on and off with cyclic repetitions (lights on for 25 minutes and lights off for 5 minutes). To activate the function press "D" for 5 seconds with the hood off. Two vertical lines will be displayed. Press any key to deactivate the function.

Filter Alarm:

• Saturation of Anti-grease Filters:

This function is activated after the appliance has been running for approximately 30 hours.

The letter "F" and the current extraction rate level will alternate on the display. The anti-grease filters must be cleaned.

To reset the function, press the "A" button for a few seconds.

• Saturation of Carbon Filters:

This function is activated after the appliance has been running for approximately 120 hours.

The letter "A" and the current extraction rate level will alternate on the display. The carbon filters must be replaced.

To reset the function, press the "A" button for a few seconds.

CUSTOMER ASSISTANCE SERVICE

Before contacting the Technical Assistance Service.

If the product does not operate at all, we advise you to:

- Check that the plug has been inserted into the power socket correctly.

If you cannot identify the cause of the operating anomaly: switch off the appliance (do not subject it to rough treatment) and contact the Assistance Service.

PRODUCT SERIAL NUMBER. Where can I find it?

It is important that you inform the Assistance Service of your product code and its serial number (a 16-character code which begins with the number 3); this can be found on the guarantee certificate or on the data plate located inside the appliance. This will help to avoid wasted journeys being made by technicians, thereby (and most significantly) saving the corresponding callout charges.

THE MANUFACTURER DECLINES ALL RESPONSIBILITY FOR EVENTUAL DAMAGES CAUSED BY BREACHING THE ABOVE WARNINGS.