



POWERWASH LIFT-OFF[®]
USER GUIDE

1190 SERIES

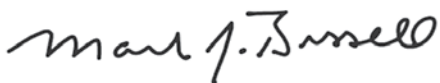
Thanks for buying a BISSELL deep cleaner

We're glad you purchased a BISSELL deep cleaner. Everything we know about floor care went into the design and construction of this complete, high-tech home cleaning system.

Your BISSELL deep cleaner is well made, and we back it with a limited five-year guarantee. We also stand behind it with a knowledgeable, dedicated Consumer Care department, so, should you ever have a problem, you'll receive fast, considerate assistance.

My great-grandfather invented the floor sweeper in 1876. Today, BISSELL is a global leader in the design, manufacture, and service of high quality homecare products like your BISSELL deep cleaner.

Thanks again, from all of us at BISSELL.






Mark J. Bissell
Chairman & CEO

Safety Instructions	3
Product View	4
Assembly	5
Operations	6-11
Maintenance & Care	12-13
Troubleshooting	14
Replacement Parts	15
Accessories	15
Guarantee	16
Consumer Care	16

TIPS

- » Deep cleaning carpeting regularly can reduce dust and allergens in your home.
- » Deep cleaning stairs and high-traffic areas on a regular basis helps prolong carpet life.

	WARNING	AN ACTION OR ATTENTION IS NEEDED TO THIS AREA IN ORDER TO REDUCE THE RISK OF ELECTRIC SHOCK, FIRE, OR INJURY
	GUIDE	READ USER GUIDE FOR COMPLETE SAFETY AND USER INSTRUCTIONS
	WEEE	DO NOT THROW THE APPLIANCE AWAY WITH THE NORMAL HOUSHOLD WASTE AT THE END OF ITS LIFE, BUT HAND IT IN AT AN OFFICIAL COLLECTION POINT FOR RECYCLING. BY DOING THIS YOU WILL HELP TO PRESERVE THE ENVIRONMENT.

IMPORTANT SAFETY INSTRUCTIONS

READ ALL INSTRUCTIONS BEFORE USING YOUR DEEP CLEANER.

When using an electrical appliance, basic precautions should be observed, including the following.

WARNING

ALWAYS CONNECT TO A PROPERLY EARTHED ELECTRICAL SOCKET.

WARNING

TO REDUCE THE RISK OF FIRE, ELECTRIC SHOCK, OR INJURY:

- » Do not leave appliance when plugged in.
- » Unplug from electrical socket when not in use and before servicing.
- » Do not modify earthed plug.
- » Do not expose to rain. Store indoors.
- » Do not allow to be used as a toy.
- » This appliance can be used by children aged from 8 years and above and persons with reduced physical, sensory and mental capabilities or lack of experience and knowledge if they have been given supervision or instruction concerning use of the appliance in a safe way and understand the hazards involved. Cleaning and user maintenance shall not be made by children without supervision.
- » Children should be supervised to ensure that they do not play with the appliance.
- » Use only as described in the user guide.
- » Use only manufacturer's recommended attachments.
- » Do not use with damaged cable or plug.

WARNING

TO REDUCE THE RISK OF FIRE AND ELECTRIC SHOCK - DO NOT EXPOSE TO RAIN. STORE INDOORS. DO NOT IMMERSE. USE ONLY ON CARPET MOISTENED BY THE CLEANING PROCESS. USE ONLY BISSELL CLEANING PRODUCTS INTENDED FOR USE WITH THIS MACHINE.

- » If the supply cable is damaged, it must be replaced by the manufacturer, its service agent or similarly qualified persons in order to avoid a hazard.
- » Do not immerse in water or liquid.
- » If appliance is not working as it should, has been dropped, damaged, left outdoors, or dropped into water; do not attempt to operate it and have it repaired at an authorized service center.
- » Liquid or steam must not be directed towards equipment containing electrical components.
- » Do not pull or carry by cable, use cable as a handle, close door on cable, or pull cable around sharp edges or corners.
- » Do not run appliance over cable.
- » Keep cable away from heated surfaces.
- » Do not unplug by pulling on cable.
- » To unplug, grasp the plug, not the cable.
- » Do not handle plug or appliance with wet hands.
- » Do not put any object into openings.
- » Do not use with any opening blocked; keep free of dust, lint, hair, and anything that may reduce air flow.
- » Keep hair, loose clothing, fingers, and all parts of body away from openings and moving parts.
- » Turn off all controls before unplugging.
- » Use extra care when cleaning on stairs.
- » Do not use to pick up flammable or combustible liquids, such as petrol, or use in areas where they may be present.
- » Do not pick up toxic material (chlorine bleach, ammonia, drain cleaner, etc.)
- » Do not use appliance in an enclosed space filled with vapors given off by oil base paint, some mothproofing substances, flammable dust, or other explosive or toxic vapors.
- » Do not pick up hard or sharp objects such as glass, nails, screws, coins, etc.
- » Keep appliance on a level surface.
- » Do not carry appliance while in use.
- » Unplug before attaching the TurboBrush™ tool.
- » If your appliance is fitted with a nonrewireable BS 1363 plug it must not be used unless a 13 amp (ASTA approved to BS 1362) fuse is fitted in the carrier contained in the plug. Spares may be obtained from your BISSELL supplier. If for any reason the plug is cut off, it must be disposed of, as it is an electric shock hazard should it be inserted into a mains socket.

FOR OPERATION ON A 220-240 VOLT A.C. 50/60 HZ POWER SUPPLY ONLY.

This model is for household use only.

SAVE THESE INSTRUCTIONS FOR FUTURE USE



www.BISELL.com

Product View



- 1 Spray Trigger
- 2 Upper Handle
- 3 Upright Cleaning Mode Indicator Light
- 4 Carry Handle
- 5 Cleaning Tool (tools vary by model)
- 6 Formula & Water Tank
- 7 Power Button
- 8 Quick Release™ Cord Wrap
- 9 Power Cord
- 10 Dirty Tank

- 11 Flex Hose
- 12 Portable Spot Cleaning Release Pedal
- 13 EdgeSweep™ Brushes
- 14 Removeable Nozzle Assembly
- 15 Cord Clip
- 16 Tool Storage
- 17 Support Handle
- 18 Tool Storage (select models)
- 19 Hose Secure Latch
- 20 Recline Pedal

Assembly

Your deep cleaner comes in two easy to assemble components:

A. Upper handle

B. Portable spot cleaner/Base

The only tool you will need to assemble your cleaner is a long Phillips screwdriver.

1. Slide the upper handle onto the body of the machine by guiding the 2 posts on the body into the opening on the upper handle.

2. Firmly holding the upper handle in place, screw 2 screws into the marked holes at an upward angle above the support handle.

3. At an upward angle, screw the remaining 2 screws into the marked outermost holes under the support handle.

4. Wrap power cord around Quick Release Cord Wrap.

5. Wrap flex hose around the hose wrap and secure with hose secure latch.

6. Align the product as image 4/5 shows and firmly push down the portable spot cleaner until it is secured on both sides.

To further check if the portable spot cleaner is secure, plug in and turn on to verify that the upright cleaning mode indicator light is illuminated. If it does not illuminate, release the pod and re-secure by pushing firmly until both sides snap into place.

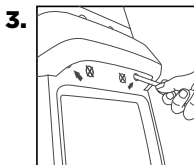
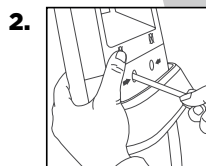
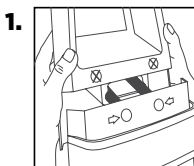
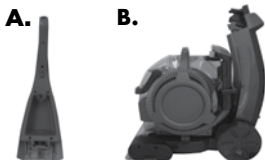
7. Check latches on both sides to confirm it is secured. Refer to image 6.

8. Snap attachment(s) into the back of unit.

NOTE: Portable spot cleaner must be fully secure to operate in the upright cleaning mode.

⚠️ WARNING

Do not plug in your cleaner until you have completely assembled it per the instructions and are familiar with all instructions and operating procedures.



Cord side Hose side

Cleaning fluid

Keep plenty of genuine BISSELL 2X cleaning formula on hand so you can clean and protect whenever it fits your schedule. Always use genuine BISSELL deep cleaning formulas. Non-BISSELL cleaning formulas may harm the machine and will void the guarantee.

⚠️ WARNING

To reduce the risk of fire and electric shock due to internal component damage, use only BISSELL cleaning fluids intended for use with the deep cleaner.



1.5 L 2X Wash & Protect PRO Professional Stain & Odour Formula w/ Scotchgard® Protector
#1089E



1.5 L 2X Wash & Protect PET Pet Stain & Odour Formula w/ Scotchgard® Protector
#1087E



1.5 L 2X Wash & Protect Stain & Odour Formula w/ Scotchgard® Protector
#1086E



1.5 L 2X Wash & Refresh Blossom & Breeze Fragrance Formula w/ Febreze® Freshness
#1078E



1.5 L 2X Wash & Refresh Cotton Fresh Formula w/ Febreze® Freshness
#1079E



1.5L 2X Wash & Refresh Natural Orange Formula
#1146E



650 mL Stain Pretreat
#1147E



www.BISSELL.com

Operations

Special features

Innovative cleaning technology

This innovative deep cleaner offers two machines in one. The upright deep cleaner uses brushes and cleaning formula to maximise cleaning. The portable spot cleaner detaches to clean tough spots and stains and hard to reach areas.

Heatwave Technology™

This deep cleaner features Heatwave Technology to help maintain the temperature of the hand hot tap water you put in it to provide constant heat as you clean. The Heatwave Technology automatically turns on when you turn the machine on. Heatwave Technology operates in both upright and portable cleaning modes.

Scotchgard™ Protector

Carpet protection applied at the mill typically wears down over time from heavy foot traffic and everyday cleaning, including deep cleaning. To help restore this important protection, only BISSELL offers deep cleaning formulas with Scotchgard protector. This offers extra protection against dirt and tough stains to keep your carpets looking good longer.

Microban® antibacterial product protection

Microban antibacterial product protection is built into key components to help prevent the growth of harmful common household bacteria. It helps to keep the unit fresher and cleaner between uses.



Tip

» For easy carrying, grab the carry handle on the portable spot cleaner and balance with the support handle on the back of the machine.

Operations

Before you clean

1. Plan activities to give your carpet time to dry.
2. Move furniture to another area if cleaning an entire room (optional).
3. Vacuum area with a dry vacuum cleaner thoroughly before deep cleaning.
4. Plan your cleaning route to leave an exit path. It is best to begin cleaning in the corner farthest from your exit.
5. Pretreating (optional):

Pretreating is recommended to improve cleaning effectiveness for heavily soiled carpet in high traffic areas such as entryway and hallways.

To pretreat:

- a. Using the BISSELL Stain Pretreat, generously spray evenly over soiled area. Do not overwet.
- b. Wait 3-5 minutes before deep cleaning.
- c. Clean as normal using your BISSELL deep cleaner, following the instructions below.

WARNING

To reduce the risk of fire, use only BISSELL deep cleaning formula for full size machines in your deep cleaner. Use of cleaning formulas that contain lemon or pine oil may damage this appliance and void the guarantee. Chemical spot cleaners or solvent-based soil removers should not be used. These products may react with the plastic materials used in your deep cleaner causing cracking or pitting.

5a.



Operations

UPRIGHT CLEANING MODE

Filling formula & water tank

1. Remove tank from the base of the machine by lifting up tank carry handle.

NOTE: This tank was designed with a flat bottom so it can be easily filled.

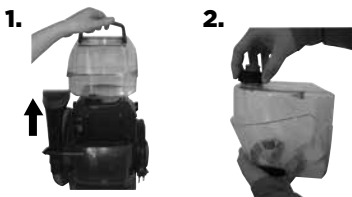
2. Unscrew the black cap and remove bottle insert.

3. Fill tank with hand hot (60°C/140°F MAX) tap water to the water fill line. Add 60 mL of BISSELL 2X formula to the tank. **Do not boil or microwave water as it can destroy the tank.**

4. Replace the bottle insert in the tank and tighten the black cap. Replace the tank on the deep cleaner.

CAUTION

Take care not to run over loose objects or edges of area rugs. Stalling the brush may result in premature belt failure.



Carpets cleaning

1. Plug into a proper outlet and press the power button.

2. With your foot, press the gray recline pedal, located on the back of the unit in between the wheels.

3. While pressing the spray trigger, make one slow forward wet pass and another one back. **Caution: Do not overwet.**

4. Release the spray trigger and make one slow forward and backward pass over the same area.

5. Repeat cleaning passes until solution being suctioned up appears clean. Continue passes without pressing the spray trigger until you can't see any more water being suctioned up. Repeated passes will help aid in dry time.

NOTE: Your machine may be equipped with a circuit breaker that will automatically shut off the brush if a large or loose object is caught in the brush roll. If that happens, be sure to unplug your machine, remove the foreign object, and then plug the machine back in to reset the circuit breaker.

ATTENTION

Some Berber carpets have a tendency to fuzz with wear. Repeated strokes in the same area with an ordinary vacuum or deep cleaner may aggravate this condition.

CAUTION

Brush may unexpectedly restart. To reduce the risk of injury from moving parts, unplug before cleaning or servicing.

Empty dirty tank

1. When the dirty tank reaches the "FULL" line on the tank, it is time to empty.

2. Remove dirty tank and carry to a utility sink, toilet or outside (where you will dispose of the dirty water).

3. To unlock the dirty tank lid, rotate handle over the back of the tank. Remove lid and pour out dirty water. Rinse out dirty tank to remove any debris.

4. Replace top of tank, and rotate the handle forward to lock in place on front of tank.

5. Before replacing tank on machine, wipe debris from red filter.



Operations

Cleaning your machine

1. Flush out machine of any remaining residual solution.
 - a. Fill the formula & water tank with hand hot (60°C/140°F MAX) tap water and turn on your machine.
 - b. Recline handle and press the spray trigger for about 15 seconds while making forward and backward passes on carpet. Continue without pressing the spray trigger until there is no more water being suctioned up.
 - c. Turn off the machine and wrap the power cord. Make sure the dirty tank and the formula & water tank are emptied, rinsed, and dried before the next use.
 - d. Before you replace tank, clean all debris from red filter screen.
2. Rinse nozzle assembly of any dirt and debris.
 - a. Remove portable spot cleaner from the base of the machine.
 - b. Remove the nozzle assembly from the machine by unscrewing 3 screws and lifting away the upper and lower nozzle.
 - c. Rinse upper and lower nozzles out at the faucet.
 - d. Place lower nozzle back onto the machine by hooking the tabs into the holes on the bottom sides of the front of the machine.
 - e. Place upper nozzle onto the lower nozzle by hooking the tabs into the holes on the front of the lower nozzle. Secure with 3 screws.
3. The inside of the end caps can be wiped out with a clean paper towel, or for a more thorough clean, the end caps can be taken off and rinsed clean.
4. Any loose hair or debris can be pulled from the brush rolls and thrown away. For a more thorough clean, follow directions on page 13 for removal of brush rolls. Your machine is now ready to be stored.

NOTE: Store cleaner in a protected, dry area. Since this product uses water, it must not be stored where there is a danger of freezing. Freezing will damage internal components and void the guarantee.

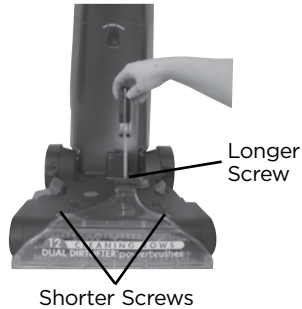
WARNING

To reduce the risk of electric shock, turn power switch off and disconnect plug from electrical outlet before performing maintenance or troubleshooting checks.

Tip

» For best results empty, rinse and dry both tanks before storing.

2b.



2d.



2e.



Tip

» Let all parts dry completely before replacing back onto machine.

Operations

PORTABLE SPOT CLEANING MODE

Preparing the machine

1. Step on the portable spot cleaning pedal to release the portable spot cleaner.
2. Release flex hose by twisting the hose secure latch clockwise. Unwrap flex hose completely.
3. Attach the desired cleaning tool to the hose grip until it snaps together. Make certain the tool is securely attached.
4. Twist the Quick Release cord wrap clockwise to unwrap the power cord completely and plug into grounded outlet.

Filling tank

Cleaning with Tools

Important! If using to clean upholstery, check upholstery tags. Check manufacturer's tag before cleaning. "W" or "WS" on the tag means you can use your deep cleaner. If the tag is coded with an "X" or an "S" (with a diagonal stripe through it), or says "Dry Clean Only", do not proceed with any deep cleaning machine. Do not use on velvet or silk. If manufacturer's tag is missing or not coded, check with your furniture dealer."

1. Follow the instructions for filling the tank in the upright cleaning mode section on page 8.
2. Attach cleaning tool of your choice to end of hose.

NOTE: If you deep cleaner came with a Deep Reach Tool, do not follow the cleaning tool instructions below. Instead, follow the "Cleaning with Deep Reach Tool" instructions in the next section.

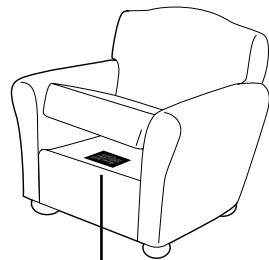
3. Hold the tool approximately 2.5 cm above the soiled surface. Press the spray trigger to apply the cleaning solution to the soiled area. **Caution: Do Not Overwet.**

NOTE: Hold end of hose below the tank water level to help prime the portable spot cleaner.

4. Using the brush on the tool, gently scrub the area to be cleaned.
5. Apply downward pressure on the tool and pull it toward you. The suction will remove the dirt and cleaning solution. Continue until no more dirt can be removed.

IMPORTANT

Check for colourfastness in an inconspicuous place. If possible, check upholstery stuffing. Coloured stuffing may bleed through fabric when it becomes wet.



Manufacturer's tag

Operations

Cleaning with Deep Reach™ Tool (select models only)

1. Set tool on soiled surfaces and press the spray trigger to spray solution onto the soiled area to be cleaned.
2. Slowly move the tool back and forth over the soiled surface, keeping the tool in contact with the carpet.
3. Release spray trigger and move tool slowly over the soiled area to suction up water and dirt.
4. Continue to clean the area, working in small sections, until no more dirt can be removed.

1.



3.



Empty dirty tank

Follow the instructions under Empty dirty tank section on page 8 of the Upright cleaning mode section.

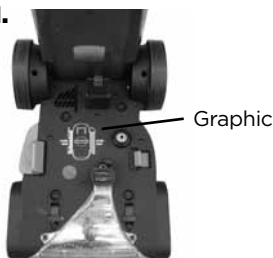
Cleaning portable machine

1. Before turning off the machine, suction up clean water from a bowl to rinse out the interior of the hose. Then, lift the cleaning tool and point it upwards to drain any remaining water into the tank.
2. Remove and rinse the tools in clean, running water. Dry and replace in the tool storage provided.
3. Coil flex hose around the hose wrap and secure with latch.
4. Check suction gate and if it appears dirty, follow steps 1-4 under Cleaning Suction Gate on page 12.

Replacing portable machine on base

1. Align the product as the graphic shows, with the cord side on the left and hose side on the right.
2. Push down the portable spot cleaner until you hear it click securely into place. Test the fit by pulling up on the carry handle to make sure it is secure.

1.



Maintenance & Care

Machine care (check regularly)

Cleaning suction gate

The suction gate automatically diverts air when the portable deep cleaner is detached. This should be checked and cleaned regularly for any dirt and debris.

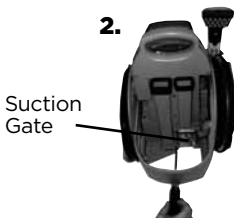
1. Step on the pedal and remove the portable spot cleaner. Remove dirty tank.
2. Remove two screws and pull off suction gate door.
3. Wipe suction gate clean and rinse suction gate door.
4. Replace suction gate door and two screws.

Cleaning spray tips

1. Step on the pedal and remove the portable spot cleaner.
2. To remove black spray tip, unlatch tab on front portion of spray tip from base of machine and pull up and out of red receiver.
3. Clean by rinsing under water.
4. Replace black spray tip by inserting back into red receiver and latching tab back down into base of machine.
5. Repeat steps on second spray tip.

⚠️ WARNING

To reduce the risk of electric shock, turn power switch off and disconnect plug from electrical outlet before performing maintenance or troubleshooting checks.



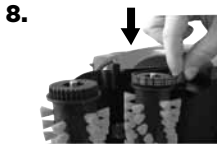
Small belt removal and replacement (as needed)

Occasional replacement of one or both belts may become necessary. If that is needed, please follow the instructions below.

1. Turn off the machine, and unplug it from the outlet. Remove portable spot cleaner.
2. Remove the nozzle assembly from the machine. Refer to step 2 on page 9.
3. Turn the machine on its side.

IMPORTANT: with portable spot cleaning pedal facing down.

4. Remove end cap by unscrewing the 3 screws. Take care not to drop the screws into the unit.
5. Remove 1 silver screw from the pivot arm.
6. Remove pivot arm by gently lifting up.
7. Remove small brush belt.
8. Replace small brush belt, and reverse steps above.
9. Manually rotate brushes by hand to make sure they move freely. You may notice a slight resistance from the motor.



Maintenance & Care

Brush removal and large belt replacement (as needed)

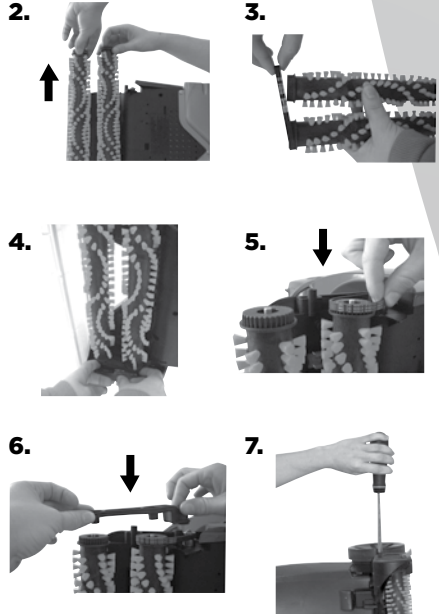
Brushes can be removed for cleaning or replacement as needed.

1. Follow small belt removal Instructions on page 12 steps 1-7.
2. Remove brush rolls by pulling them off of the metal rods. **Be careful not to lose the small washer at each end of the brush rolls.**
3. Re-attach the large belt to the grooves on the end of the new or cleaned brush rolls. If the belt is damaged, replace with a new belt.
4. Place cleaned or new brush rolls back onto the rods. Make sure one washer is on each end of the rollers prior to sliding onto the rod. Be sure the brush is seated completely on the rod.
5. Replace small belt over grooves in back roller and metal cog.
6. Replace pivot arm and secure with silver screw.
7. Re-attach end cap by tightening with the (3) black screws.
8. Replace the nozzle assembly back onto the machine. Refer to step 2 on page 9.

If you have any questions or are having trouble installing or replacing your belt(s) or brushes, please call **BISSELL Consumer Care**.

WARNING

To reduce the risk of electric shock, turn power switch off and disconnect plug from electrical outlet before performing maintenance or troubleshooting checks.



Troubleshooting

WARNING

To reduce the risk of electric shock, turn power switch off and disconnect plug from electrical outlet before performing maintenance or troubleshooting checks.

Problem	Possible causes	Remedies
Upright cleaning mode indicator light does not illuminate	The power is not turned ON	The power must be ON to activate the indicator light
	The portable spot cleaner is not attached completely	Make sure the portable spot cleaner is attached. Push down firmly to check.
Reduced Spray or No Spray	Formula & water tank may be empty	Refill tank
	Formula & water tank may not be seated completely	Turn power OFF. Remove and reseal tank
	Pump may have lost prime in portable spot cleaning mode	Hold end of hose below water level in tank to prime
	The portable spot cleaner is not attached completely	Push down firmly to check connection
DirtLifter™ PowerBrush does not turn	The portable spot cleaner is not attached completely	Make sure the portable spot cleaner is attached. Push down firmly to check
	The unit is in the upright position	Brushes only rotate when unit is reclined using the recline pedal
	Circuit breaker on machine (if equipped) may have tripped	Turn the machine OFF and unplug from outlet. Check to see if foreign object is caught in brush roll. Remove object. Plug machine in to reset circuit breaker
	The belt is off or broken	Turn power OFF and unplug unit from outlet. Follow instructions on pages 12 and 13
Loss of suction power	Tanks may not be seated properly	Pick up both tanks and reseal them so they fit snugly on the unit
	Nozzles may not be assembled properly	Unplug the unit. Check to make sure the "lip" of the nozzle is securely hooked into the groove on bottom of the machine (see page 9)
	The portable spot cleaner is not attached completely	Make sure the portable spot cleaner is attached. Push down firmly to check
	Dirty tank has picked up maximum amount of dirty water and has reached full line	Empty dirty tank
	Formula & water tank is empty	Check fluid levels in formula & water tank
	Suction gate is open	Check to make sure the suction gate is closed. Follow "Cleaning suction gate" instructions on page 12
















Please do not return this product to the store.

Other maintenance or service not included in the manual should be performed by an authorized service representative.

Thank you for selecting a BISSELL product.

Replacement Parts

These items are available for your BISELL deep cleaner. Visit www.BISELL.com

PART #	PART NAME		PART #	PART NAME	
160-0188	Formula & Water Tank Assembly (includes cap and insert)		203-2287	Cap and Insert for Formula & Water Tank	
160-0189	Dirty Tank Assembly (includes entire tank)		203-7904	Cord Wrap	
203-7896	End Caps with Edge Brushes (2 pack, includes screws)		203-7897	Spray Tips Assembly (includes two spray tips)	
160-0190	Nozzle Cover Assembly (includes gasket, nozzle cover, and front nozzle cover)		160-0191	Front Nozzle	
203-8256	Brush Assembly (includes 2 brush rolls, 2 axles, and 2 swivel arms)		203-8257	Brush Single Pack (includes 1 brush roll, and 1 axle)	
203-6688	Small Brush Belt		203-6804	Large Brush Belt	
203-6689	Hose Secure Latch		203-7918	Dirty Tank Gasket Assembly (include both gaskets)	
203-7917	Diverter Cover Assembly (includes cover and screws)		*Not all parts are included with every model.		

Accessories

These items are available for your BISELL deep cleaner. Visit www.BISELL.com

PART #	PART NAME		PART #	PART NAME	
203-6651	3" Tough Stain Tool		203-6652	Powered TurboBrush™ Hand Tool	
203-6653	4" Upholstery Tool		203-6654	6" Stair Tool	
203-7885	Spraying Crevice Tool		203-7412	Deep Reach™ Tool	
210-3040	Mesh Bag		*Not all parts are included with every model.		

Cleaning Formula: Refer to bottom of page 5 of this guide for a full selection of cleaning formula available for purchase.



www.BISELL.com

Consumer Guarantee

This Guarantee only applies outside of the USA and Canada. It is provided by BISSELL International Trading Company BV ("BISSELL").

This Guarantee is provided by BISSELL. It gives you specific rights. It is offered as an additional benefit to your rights under law. You also have other rights under law which may vary from country to country. You can find out about your legal rights and remedies by contacting your local consumer advice service. Nothing in this Guarantee will replace or lessen any of your legal rights or remedies. If you need additional instruction regarding this Guarantee or have questions regarding what it may cover, please contact BISSELL Consumer Care or contact your local distributor.

This Guarantee is given to the original purchaser of the product from new and is not transferable. You must be able to evidence the date of purchase in order to claim under this Guarantee.

Limited Five-Year Guarantee

Subject to the *EXCEPTIONS AND EXCLUSIONS identified below, BISSELL will for five years from the date of purchase by the original purchaser repair or replace (with new or remanufactured components or products), at BISSELL's option, free of charge, any defective or malfunctioning part or product.

BISSELL recommends that the original packaging and evidence of the date of purchase be kept for the duration of the Guarantee period in case the need arises within the period to claim on the Guarantee. Keeping the original packaging will assist with any necessary re-packaging and transportation but is not a condition of the Guarantee.

If for your product is replaced by BISSELL under this Guarantee, the new item will benefit from the remainder of the term of this Guarantee (calculated from the date of the original purchase). The period of this Guarantee shall not be extended whether or not your product is repaired or replaced.

*EXCEPTIONS AND EXCLUSIONS FROM THE TERMS OF THE GUARANTEE

This Guarantee applies to products used for personal domestic use and not commercial or hire purposes. Consumable components such as filters, belts and mop pads, which must be replaced or serviced by the user from time to time, are not covered by this Guarantee.

This Guarantee does not apply to any defect arising from fair wear and tear. Damage or malfunction caused by the user or any third party whether as a result of accident, negligence, abuse, neglect, or any other use not in accordance with the User Guide is not covered by this Guarantee.

An unauthorised repair (or attempted repair) will void this Guarantee whether or not damage has been caused by that repair/attempt.

Removing or tampering with the Product Rating Label on the product or rendering it illegible will void this Guarantee.

SAVE AS SET OUT BELOW BISSELL AND ITS DISTRIBUTORS ARE NOT LIABLE FOR ANY LOSS OR DAMAGE THAT IS NOT FORESEEABLE OR FOR INCIDENTAL OR CONSEQUENTIAL DAMAGES OF ANY NATURE ASSOCIATED WITH THE USE OF THIS PRODUCT INCLUDING WITHOUT LIMITATION LOSS OF PROFIT, LOSS OF BUSINESS, BUSINESS INTERRUPTION, LOSS OF OPPORTUNITY, DISTRESS, INCONVENIENCE OR DISAPPOINTMENT. SAVE AS SET OUT BELOW BISSELL'S LIABILITY WILL NOT EXCEED THE PURCHASE PRICE OF THE PRODUCT.

BISSELL DOES NOT EXCLUDE OR LIMIT IN ANY WAY ITS LIABILITY FOR (A) DEATH OR PERSONAL INJURY CAUSED BY OUR NEGLIGENCE OR THE NEGLIGENCE OF OUR EMPLOYEES, AGENTS OR SUBCONTRACTORS; (B) FRAUD OR FRAUDULENT MISREPRESENTATION; (C) OR FOR ANY OTHER MATTER WHICH CANNOT BE EXCLUDED OR LIMITED UNDER LAW.

Consumer Care

If your BISSELL product should require service or to claim under our Limited Five-Year Guarantee, please visit:

Website or E-mail:

www.BISSELL.com

For UK inquiries:

Telephone: 0844.888.6644

Monday - Thursday 9am - 5pm

Friday 9am - 4pm

BISSELL Homecare (Overseas) Inc.

Ground Floor

226 Berwick Avenue

Slough,

Berkshire, SL1 4QT

United Kingdom

Visit the BISSELL website: www.BISSELL.com

When contacting BISSELL, have model number of cleaner available.

Please record your Model Number: _____ Please record your Purchase Date: _____

NOTE: Please keep your original sales receipt. It provides proof of the date of purchase in the event of a Guarantee claim. See Guarantee for details.



©2015 BISSELL Homecare, Inc.
Grand Rapids, Michigan
All rights reserved. Printed in China
Part Number 160-2737 Rev 9/15
Visit our website at: www.BISSELL.com
Scotchgard is a trademark of 3M
Microban® is a registered trademark of Microban Products Company

Febreze is a trademark of The Procter & Gamble Company, Cincinnati, Ohio used under license by BISSELL Homecare, Inc.