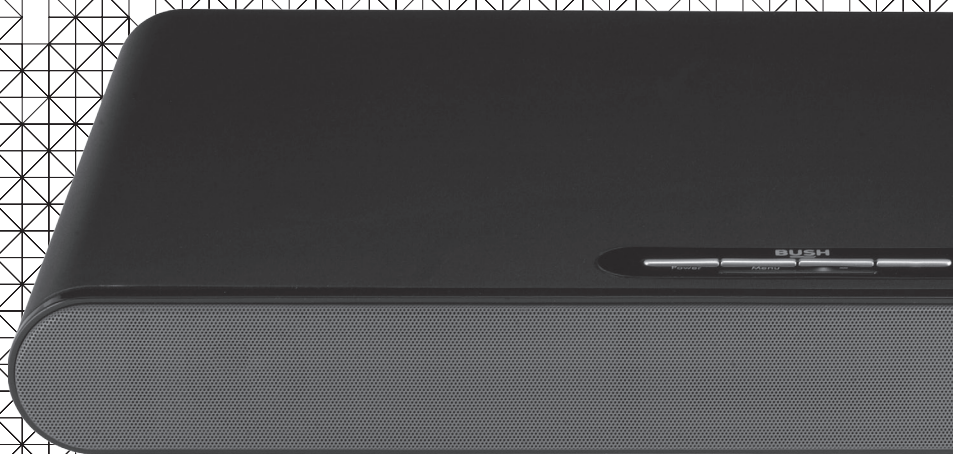


BUSH

Instruction Manual

Soundbase with Bluetooth





Soundbase with Bluetooth

Contents

Important safety information.....	3
Check the package contents.....	5
Soundbase product overview	6
Remote control.....	7
Remote control battery replacement	7
Place your TV onto the Soundbase	8
Connect your Soundbase.....	9
Using the Optical connection	9
Using the AUX connection	9
Using the 3.5mm audio connection	9
Connect to the mains power supply.....	9
Using Bluetooth.....	10
Listening to Music/Audio using Bluetooth.....	10
Technical information	11
General information.....	12
Guarantee	13





Important safety information

Your Soundbase should be treated with care. The information below has been provided in the interest of safety and will help you to enjoy this product and the benefits it brings for many years.

- Keep the product and all its parts out of reach of small children.
- This product is not intended for use by persons (including children) with reduced physical, sensory or mental capabilities, or lack of experience and knowledge, unless they have been given supervision or instruction concerning the use of the appliance by a person responsible for their safety.
- Keep it dry. Avoid exposure to precipitation, humidity and liquids which could all affect the product circuitry.
- Do NOT leave it in high temperatures as electronic devices and plastic parts may warp in heat.
- Do NOT leave it in low temperatures as moisture can form inside the product, which may damage the circuit board.
- Do NOT block or cover slots, holes or openings on the product by placing on soft furnishings such as carpets, rugs or beds as these are provided for functionality and/or ventilation to ensure safe operation of the product
- Do NOT store in dusty or dirty areas.
- Do NOT use harsh chemicals, cleaning solvents or detergents to clean the product. Wipe with a damp (not wet) soft cloth to clean.
- Disconnect your Soundbase from the mains power supply during thunderstorms.
- Always check that you have completely switched off your Soundbase, before you change or disconnect the power supply.
- Only use the power supply that came with the product. Using an unauthorised power supply will invalidate your guarantee and may irrecoverably damage the product.
- Where the mains power plug or an appliance coupler is used as the disconnect device, the disconnect device shall remain readily operable.
- Do NOT attempt to open the product. This product does not contain any user serviceable parts. Unauthorised handling of the device may damage it and will void your warranty.
- Do NOT use your Soundbase near emergency/intensive care medical equipment; if you have a pacemaker fitted or during an electrical storm.
- If the Soundbase will not be used for a long period of time, make sure that the battery is removed from the remote control and the mains power is unplugged.
- Only use recommended batteries or those of the same equivalent type.





- Batteries are to be inserted with the correct polarity.
- The supply terminals are not to be short-circuited.
- Remove the battery from the remote control if it will not be used for an extended period of time.
- Do not attempt to recharge non-rechargeable batteries.
- Dispose of old batteries carefully.
- Never throw batteries in a fire or attempt to open the outer casing.
- Batteries are harmful if swallowed, so keep away from young children.
- CAUTION: Danger of explosion if batteries are incorrectly replaced. Replace only with the same or equivalent type.



WARNING:

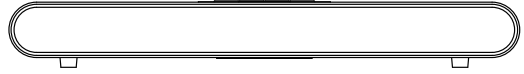
To prevent possible hearing damage, do not listen to this Soundbase at high volume levels for long periods of time.



Check the package contents

The following items are included:

Soundbase product



Remote control with CR2025 battery



Optical cable



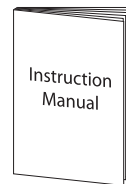
RCA Stereo audio cable



3.5mm to 3.5mm audio cable



Instruction manual and warranty card



Soundbase product overview

Top view

Power/EQ

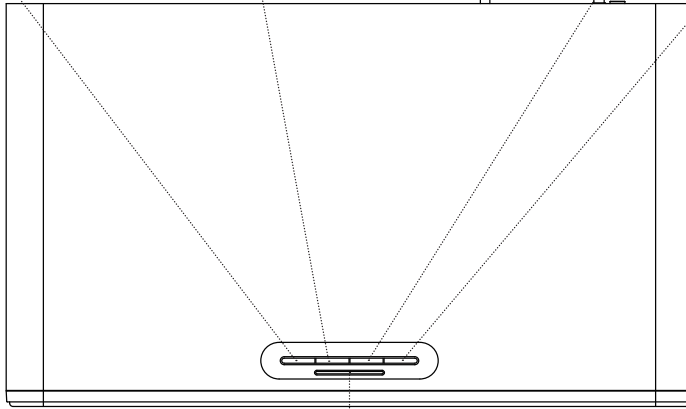
Short press to Power
on from Standby

Source

Aux / Line in / Optical / Bluetooth

Vol -

Vol +



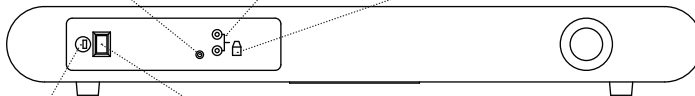
LED Power and source indicators

Rear view

Line in (3.5mm) socket

Aux 2 (L/R) socket

Optical socket



Fixed power cord

Power switch

Remote control

Power on/Standby

Pair.

Starts Bluetooth pairing process/Disconnects an existing paired device

Mute button.

Press and release to mute and unmute

Source.

Select Aux / Line in / Optical / Bluetooth

EQ.

Press and release to select Music, Movie or TV EQ mode. Press and hold for 3 seconds to reset to default mode. You can then adjust the Bass and Treble.

Skip backwards / previous track in Bluetooth mode

Skip forwards / next track in Bluetooth mode

Play / Pause for use in Bluetooth mode

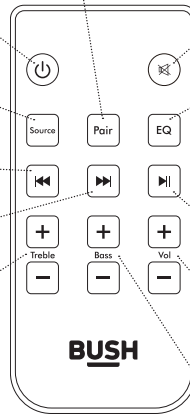
Treble+ / Treble -

Press the EQ button for 3 seconds to select the default mode. Then you can adjust the Treble

Vol+ / Vol-
Adjusts the volume

Bass + / Bass -

Press the EQ button for 3 seconds to select the default mode. Then you can adjust the Bass

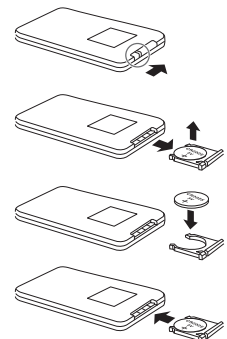


The remote control sensor at the front of the soundbase is sensitive to the remote control's commands up to a maximum of 6 metres away and within a maximum arc of 40 degrees.

Please note that the operating distance may vary depending on the brightness of the room.

Remote control battery replacement

1. Slide and hold the battery release tab in the direction of the arrow
2. Pull out the battery holder and remove the old battery
3. Replace with a new battery
4. Insert the battery holder back into the remote control

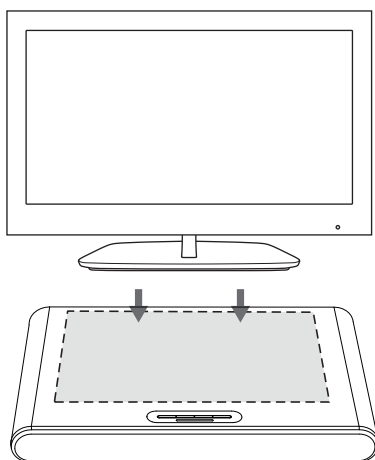


Place your TV onto the Soundbase

Your soundbase product will support a TV which has a base, up to a maximum dimension of 48cm wide x 22cm depth, with a maximum weight of 30kg.

Please ensure that your TV is placed properly onto the Soundbase to avoid instability of your TV when you increase the soundbase volume.

Maximum dimension of the TV base of 48cm wide x 22cm depth.





Connect your Soundbase

Using the Optical connection

Using an optical cable (supplied), connect the TV optical output socket to the soundbase optical socket. Before inserting the optical cable, please remove the optical socket cover.

Note: If there is no sound output, please check that the audio setting of your TV (or game console, DVD player etc.), is set to PCM mode.

Using the AUX connection

Use the RCA Stereo audio cable (supplied), to connect the TV's stereo RCA (L/R) audio output socket to the Aux (L/R) sockets on the soundbase.

Using the 3.5mm audio connection

Use the 3.5mm to 3.5mm cable (supplied), to connect the other external device headphone or 3.5mm output socket to the soundbase 3.5mm socket.

Connect to the mains power supply

 You must ensure that all the audio connections to the soundbase have been made before you connect this product to the mains power supply.

1. Unwind the mains power cable on the back of the soundbase to its full length.
2. Connect the mains power plug to a mains power socket and switch on.

Note: If the Soundbase will not be used for a long period of time, make sure that the battery is removed from the remote control and the mains power is unplugged.



Using Bluetooth

Check that your soundbase is in Bluetooth (BT) mode. If you are not already in BT mode, press and release the 'Source' button on the top of the soundbase or on the remote control, until you are in BT mode (check the LED indicators on the soundbase). A tone will sound and the Bluetooth blue LED will flash, whilst your product searches for Bluetooth devices.

Connecting or 'Pairing' with your soundbase

In Bluetooth (BT) Mode:

1. The blue bluetooth LED on the soundbase will flash.
2. On the device that you would like to connect to your soundbase via Bluetooth (e.g. iPhone/iPad/Android/other phone/Tablet/Computer), turn on Bluetooth connectivity and ensure that it is 'discoverable'.

Note: If necessary, refer to the instructions for your device to add or set up Bluetooth.

3. Select to 'Add new device', if necessary.

Note: Some products will automatically search for a new device and so the 'Add new device' option is not available.

4. When found, your soundbase will be displayed as 'BUSH Audio'. Select the device name to begin pairing.
5. When pairing is complete the blue soundbase LED will stop flashing and will remain steady on.
6. Now that you have paired your device with the soundbase, it will connect to it when it is within range, which is about 10 metres or less (33 feet or less), line of sight.
7. Your device will remain paired with the soundbase unless you decide to disconnect or 'unpair' it.

Note: If your device should be come unpaired for any reason, follow the steps above to 'pair' it again.

You can press the 'Pair' button on the remote control to disconnect an existing paired device or to restart the Bluetooth pairing process.

Listening to Music/Audio using Bluetooth

In Bluetooth mode:

1. Select and start the music or audio that you wish to listen to on your paired Bluetooth device, it will now be heard through the soundbase speakers. Adjust the volume on the connected device and/or your soundbase.
2. You can use the controls on your paired Bluetooth device as well as those on the soundbase remote control.

Technical information


Power supply: 220-240V ~ 50/60Hz
Power consumption: 22W
Speaker output power: 20W x 2 + 60W (subwoofer)

Connectivity: AUX in (L/R) sockets.
3.5mm audio socket.
Optical input.
Bluetooth V2.1+EDR




General information



This symbol  indicates that this product should not be treated as normal household waste and it should be recycled. Please take it to your nearest collection facility or for further details contact your local council or visit www.recycle-more.co.uk

Batteries contain substances that may be harmful to the environment and human health. Keep out of the reach of children and seek immediate medical help if swallowed.



This symbol  indicates that batteries should not be disposed of in the normal household waste but taken to appropriate local recycling facilities, where and when these are available.

Never throw batteries in a fire or attempt to open the outer casing





PRODUCT GUARANTEE

This product is guaranteed against manufacturing defects for a period of



Year

This product is guaranteed for twelve months from the date of original purchase. Any defect that arises due to faulty materials or workmanship will either be replaced, refunded or repaired free of charge where possible during this period by the dealer from whom you purchased the unit.

The guarantee is subject to the following provisions:

- The guarantee does not cover accidental damage, misuse, cabinet parts, knobs or consumable items.
- The product must be correctly installed and operated in accordance with the instructions contained in this manual.
- It must be solely for domestic purpose.
- The guarantee will be rendered invalid if the product is re-sold or has been damaged by inexpert repair.
- Specifications are subject to change without notice.
- The manufacturer disclaims any liability for the incidental or consequential damages.

The guarantee is in addition to and does not diminish your statutory or legal rights.

Guarantor: Argos Ltd.,
489-499 Avebury Boulevard
Central Milton Keynes
MK9 2NW







CE

Jul15/Issue:1.1

