

BUSH

PRODUCT GUARANTEE

This product is guaranteed against manufacturing defects for a period of



This product is guaranteed for twelve months from the date of original purchase. Any defect that arises due to faulty materials or workmanship will either be replaced, refunded or repaired free of charge where possible during this period by the dealer from whom you purchased the unit.

The guarantee is subject to the following provisions:

- The guarantee does not cover accidental damage, misuse, cabinet parts, knobs or consumable items.
- The product must be correctly installed and operated in accordance with the instructions contained in this manual.
- It must be used solely for domestic purpose.
- The guarantee will be rendered invalid if the product is re-sold or has been damaged by inexpert repair.
- Specifications are subject to change without notice.
- The manufacturer disclaims any liability for the incidental or consequential damages.
- The guarantee is in addition to, and does not diminish your statutory or legal rights.

Guarantor: Argos Ltd
489 - 499 Avebury Boulevard
Central Milton Keynes
MK9 2NW

BUSH

Instruction Manual

NE-6005



Table of content

IMPORTANT SAFETY INSTRUCTIONS	1
FEATURES AND CONTROLS.....	4
SWITCHING YOUR RADIO ON FOR THE FIRST TIME	5
LISTENING TO YOUR RADIO.....	6
Hints for better reception	6
SETTING THE CLOCK.....	6
DAB mode	6
DAB Auto Scan.....	7
DAB Auto Scan.....	7
Prune.....	7
DAB display modes	7
FM radio	7
Scan setting	8
Audio setting.....	8
FM display modes.....	8
STORING AND RECALLING STORED STATIONS	8
FACTORY RESET.....	9
HEADPHONE JACK	9
TECHNICAL SPECIFICATION.....	10
Trouble shooting guide	10

SAFETY

- FOR HOUSEHOLD AND INDOOR USE ONLY
- PLACE THE APPLIANCE ON A FLAT, STABLE SURFACE WITH ADEQUATE VENTILATION AND AWAY FROM OTHER SOURCES OF HEAT. MINIMUM DISTANCES AROUND THE APPLIANCE FOR ADEQUATE VENTILATION IS 10CM. DO NOT COVER OR RESTRICT VENTILATION OPENINGS.
- CHILDREN SHOULD BE SUPERVISED TO ENSURE THEY DO NOT PLAY WITH THE APPLIANCE, AND THE APPLIANCE AND CABLE SHOULD BE KEPT COMPLETELY OUT OF REACH OF YOUNG CHILDREN.
- THIS APPLIANCE IS NOT DESIGNED FOR USE BY CHILDREN, OR PERSONS WITH REDUCED PHYSICAL, SENSORY OR MENTAL CAPABILITIES, AND SHOULD NOT BE USED BY SUCH PERSONS UNLESS THEY CAN DO SO SAFELY. WHERE NECESSARY, SUCH PERSONS (OR ANYONE WITH LACK OF EXPERIENCE OR KNOWLEDGE) SHOULD FIRST BE GIVEN SUPERVISION OR INSTRUCTION CONCERNING USE OF THE APPLIANCE BY A PERSON RESPONSIBLE FOR THEIR SAFETY.
- FULLY UNWIND THE CABLE BEFORE PLUGGING IN AND ENSURE THE CABLE IS POSITIONED AWAY FROM AREAS WHERE IT IS LIKELY TO GET DAMAGED OR CAUSE A TRIP HAZARD.
- THE OUTPUT CORD OF THIS MAINS ADAPTOR CANNOT BE REPLACED. IN THE EVENT OF DAMAGE TO THE CABLE, JACK PLUG OR ADAPTOR, THE ENTIRE ADAPTOR UNIT SHOULD BE REPLACED.
- CONNECTIONS MUST ONLY BE MADE VIA THE MAINS ADAPTOR SUPPLIED, NEVER CONNECT THE APPLIANCE DIRECTLY TO THE 240V MAINS SUPPLY.
- NEVER USE THE ADAPTOR SUPPLIED WITH ANY OTHER APPLIANCE.
- THE MAINS ADAPTOR WILL BECOME WARM IN USE; DO NOT COVER OR PLACE ON OR NEAR SURFACES THAT COULD BE AFFECTED BY HEAT SUCH AS TABLE TOPS AND CARPETS.
- REMOVE MAINS ADAPTOR FROM SUPPLY IF APPLIANCE IS UNUSED FOR A LONG PERIOD OF TIME, AND DURING THUNDERSTORMS.
- DO NOT PULL ON THE CABLE TO DISCONNECT FROM MAINS SUPPLY.

- KEEP APPLIANCE, CABLE, MAINS ADAPTOR PLUG DRY AND AWAY FROM AREAS WHERE IT IS LIKELY TO GET SPLASHED. AVOID USING IN HOT, HUMID ENVIRONMENTS.
- DO NOT PLACE ITEMS WITH NAKED FLAMES OR CONTAINERS WITH LIQUIDS ON THIS APPLIANCE.
- SWITCH OFF AND UNPLUG WHEN NOT IN USE AND BEFORE CLEANING OR SERVICING THE APPLIANCE. SERVICING OF THIS APPLIANCE MUST ONLY BE CARRIED OUT BY A QUALIFIED ELECTRICIAN.
- ALWAYS ENSURE THE MAINS ADAPTOR PLUG IS READILY UNPLUGGABLE – DO NOT USE WITH 'LOCKABLE' SOCKETS OR PERMANENTLY WIRE TO MAINS.



The lightning flash with arrow-head symbol, within an equilateral triangle, is intended to alert the user to the presence of un-insulated "dangerous voltage" within the product's enclosure that may be of sufficient magnitude to constitute a risk of electric shock.



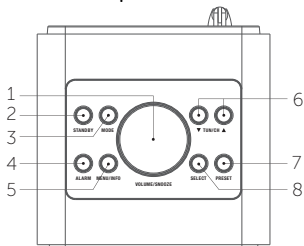
WARNING: TO REDUCE THE RISK OF ELECTRIC SHOCK, DO NOT REMOVE COVER (OR BACK). NO USER SERVICEABLE PARTS INSIDE, REFER SERVICING TO QUALIFIED SERVICE PERSONNEL.



The exclamation point within an equilateral triangle is intended to alert the user to presence of important operating and maintenance (servicing) instructions in the literature accompanying the appliance.

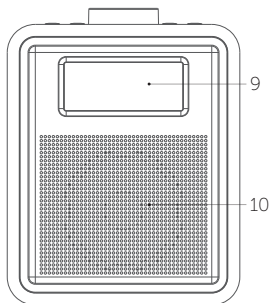
PARTS

Top view



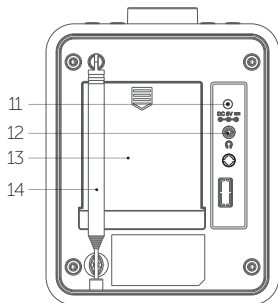
1. VOLUME/SNOOZE CONTROL
2. STANDBY BUTTON
3. MODE BUTTON
4. ALARM BUTTON
5. MENU/INFO BUTTON
6. TUN/CH ▼/▲ BUTTON
7. PRESET BUTTON
8. SELECT BUTTON

Front view



9. LCD DISPLAY
10. SPEAKER

Rear view



11. DC INPUT SOCKET
12. HEADPHONE JACK
13. BATTERY DOOR
14. ROD ANTENNA
15. AC/DC ADAPTOR



SWITCHING YOUR RADIO ON FOR THE FIRST TIME

AC Operation

1. Insert the DC power jack of AC/DC adaptor to the DC input socket located at the rear of the radio.
2. Plug the AC/DC Adaptor to the AC mains outlet.
3. Press the **STANDBY** to turn the radio on.

Remarks: If the AC Adaptor voltage is over than 6V, it will possible make the line damage.

DC (battery) operation

1. Ensure the AC/DC adaptor is disconnected from the radio and AC mains.
2. Installed the batteries (4x1.5V UM3/AA battery) into the battery compartment.
3. Press the **STANDBY** to turn the radio on.

Remarks: To obtain the best performance in DC operation, the use of alkaline batteries is highly recommended.

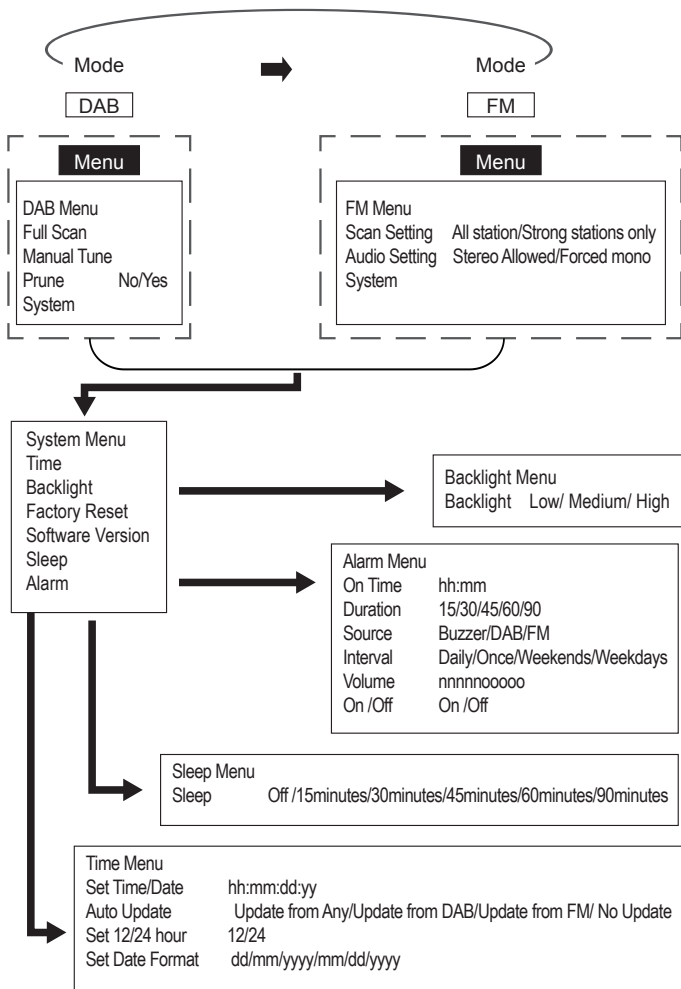
Menus:

The following controls are used to move about the menu tree to choose and select the required settings:

Press and hold **MENU** button selects the currently display option, if the option has a further sub-menu, the first option of the sub-menu is displayed. Is the option is a setting value, the displayed value is selected and either the next setting is highlighted or, if there are no further settings. The display returns to the parent menu for that setting.

Note:

1. Current or default values are indicated by an asterisk (*) on the right-hand side of the top line of the character display.
2. Each of the above steps need to be completed within 5 seconds of pressing the button, otherwise the screen will clear.



SETTING THE CLOCK

The clock in this radio is equipped to receive a DAB radio frequency time signal. After the unit has been turned on, it will automatically tune into a DAB radio station and update the clock. It may be necessary to wait for 1-2 minutes to allow the unit to receive the time signal. If the area will only receive an FM signal it will be necessary to manually set the clock. To manually set the clock

Set the clock in STANDBY mode

1. Insert the adaptor cord into the power socket at the rear of the radio. Plug the adaptor into the mains supply socket.
2. The display backlight will illuminate for a few seconds, a welcome message (F1) will appear in the display briefly and the clock will be displayed "00:00:00 Time is not set" will be displayed
3. In standby mode, press the **ALARM** button, the hour digits will flash in the display, press **TUN/CH ▼/▲** buttons to set the correct hour, then press the **SELECT** button to confirm.
4. The minute digits will now flash, press **TUN/CH ▼/▲** buttons to set the correct minute.
5. Later you will enter to "Set date 1-1-2014". Press **TUN/CH ▼/▲** buttons to set date and press **SELECT** button to confirm again.

Set the clock in working mode

1. Connect the radio to AC mains (via AC/DC adaptor), then press **STANDBY** to turn the radio on.
2. Press and hold **MENU** button, and then press **TUN/CH ▼/▲** buttons until the display show "System". And press the **SELECT** button confirm.
3. Continue press **TUN/CH ▼/▲** buttons until the display shows "Time' and then press the **SELECT** button to confirm. The display will show "<Set Time/Date>", press the **SELECT** button to confirm again.
4. The hour digits will flash in the display, press **TUN/CH ▼/▲** buttons to set the correct hour, and then press the **SELECT** button to confirm.
5. The minute digits will now flash, press **TUN/CH ▼/▲** buttons to set the correct minute.
6. Later you will enter to "set date 1-1-2014", press **TUN/CH ▼/▲** buttons to set date and press **SELECT** button to confirm again.

BASIC OPERATION - GETTING STARTED

Press the **STANDY** button to turn the unit on, it will automatically enter into the DAB mode and perform auto scan function, During the scan the display show "Scanning..." together with a slide bar that indicates the progress of the scan and the amount of stations that have been found so far.(F.1) (F.2) Once the scan has finished, the radio will select the first alphanumerically found station. You can now press **TUN/CH ▼/▲** buttons to explore the found stations followed by pressing the **SELECT** button to select listening to the stations.

Note: If there is no stations found after auto scan, the radio will then enter into the Tune Select Menu, you can now press **TUN/CH ▼/▲** buttons to select "Full scan" or "Manual tune" for stations, and press **SELECT** button to finally confirm.

F.1



F.2



DAB Auto Scan

The auto scan will search for the entire DAB Band III channels, After the scan has finished, the first alphanumerically found stations will be automatically selected.

1. To activate auto scan, press and hold **MENU** button, and press **TUN/CH ▼/▲** buttons to enter into the Menu to select "Full scan", finally press the **SELECT** button to confirm. The display will show "Scanning..." and a pressing slide bar.(F.3)
2. All the stations that have been found will be stored automatically, press **TUN/CH ▼/▲** buttons to explore the stations that have been found. When you find a station that you would like to listen, press the **SELECT** button to confirm.

DAB Manual tune

1. To select manual tune, press and hold **MENU** button, and then press **TUN/CH ▼/▲** buttons to select "Manual tune"(F.4). And press the **SELECT** button to confirm.
2. Press **TUN/CH ▼/▲** buttons to move through the DAB channels, the display will show "5A to 13F" and their associated frequencies. (F.5)
3. When your desired frequency appears in the display, press the **SELECT** button to listen, the name of the station group (ensemble/multiplex) will be displayed.

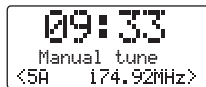
F.3



F.4



F.5



Prune

You may remove all unavailable station form on the list.

1. During DAB mode, press and hold **MENU** button and then press **TUN/CH ▼/▲** buttons to select "Prune". Press the **SELECT** button to confirm.
2. Press **TUN/CH ▼/▲** buttons to select <Yes> to confirm delete. Or select <No> to cancel.

DAB display modes

Every time you press the **INFO** button, the display will cycle through the following display modes: Signal strength, Programme Type, Ensemble Name, Channel number/frequency, Signal error, Audio Bit Rate, Power status (Mains/Battery), Time and Date.

FM radio

1. To select FM, press the **MODE** button, the display will show FM and the frequency.
2. To activate auto search, press **SELECT** button or press and hold **TUN/CH ▼/▲** buttons until the radio starts to scan the frequency band, the display will show 'Scanning ...' (F6), and it will stop automatically once a station has been found.
3. To search manually, press **TUN/CH ▼/▲** buttons in the desired direction to increment the frequency by 0.05MHz. If reception is still poor adjust the position of the antenna or try moving the radio to another location.

F.6



Scan setting

In FM mode, press and hold **MENU** button and then press **TUN/CH ▼/▲** buttons to select "Scan setting". And press the **SELECT** button to confirm. Press **TUN/CH ▼/▲** buttons to select "All stations/Strong stations", and then press the **SELECT** button to confirm the setting.

Audio setting

In FM mode, press and hold **MENU** button and then press **TUN/CH ▼/▲** buttons to select "Audio setting". And press the **SELECT** button to confirm.

Press **TUN/CH** ▼/▲ buttons to select "Stereo allowed/Forced mono" and then press the **SELECT** button to confirm the setting.

Note: The radio will automatically switch between stereo and mono mode, but you can override this and switch this function manually which is helpful for poor signal reception.

FM display modes

Every time you press the **INFO** button, the display will cycle through the following display modes: RDS Radio Text, Programme Type, Frequency, Mono/Stereo, Power status (Mains/Battery), Time and Date.

STORING AND RECALLING STORED STATIONS

This function allows up to 10 stations to be programmed into the memory and stored in both DAB and FM mode.

1. To store a preset, first tune to your desired station, then press and hold the **PRESET** button for longer than 2 seconds, the display will show "Preset Store <#:(Empty)>" (F.7).
2. Press **TUN/CH** ▼/▲ buttons to select your desired station preset number.
3. Press the **SELECT** to confirm your selection, the station now broadcasting has now been stored in the selected location (F.8).
4. To listen to the preset stations, press the **PRESET** button once and then press **TUN/CH** ▼/▲ buttons to select the desired preset location. And press the **SELECT** button to confirm. (F.9) The station name or frequency and preset location number will be displayed in the lower half of the display.
If the preset has not been allocated, "Preset Recall <#:(Empty)>" will be shown in the display.

F.7



F.8



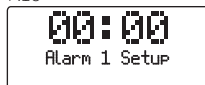
F.9



SETTING ALARMS (AC OPERATION ONLY)

1. Alarms can be switched on or off in standby mode. However, the alarm parameters can only be set when the product is on.

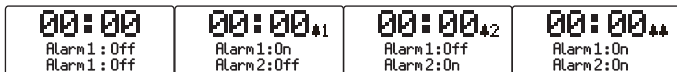
F.10



2. To set or change alarm 1, press **ALARM** button once, then press the **SELECT** button.
3. To set or change alarm 2, press the **ALARM** button twice, then press the **SELECT** button.
4. In the alarm setting mode, press the **VOLUME/SNOOZE** button to pause the alarm.
5. The alarm setup prompts you for the following parameters. Select a value for each parameter by press **TUN/CH ▼/▲** buttons, and then press the **SELECT** button to move on to the next parameter.
6. Parameters
 - On Time –Hours and minutes
 - Duration-15/30/45/60/90 minutes
If the alarm is not cancelled product returns to standby after this time period
 - Source- Buzzer/DAB/FM
If DAB or FM is chosen as the audio source you will also be prompted to select the last played station or one of the preset station (if set)
 - Daily/Once/Weekends/Weekdays Choose the days on which the alarm is active
Note: if you choose "Once", you are prompted to enter the require date.
 - Volume – Rotate the Volume control increase or decrease the volume you desired
This is the volume the alarm will build up to. (Initially the alarm sounds at a low volume and gradually gets louder to the set volume)
 - Alarm – Off/ On
- In all listening modes active alarms are indicated by displaying the relevant Alarm 1 and or Alarm 2 icons.
- At the set time, the alarm will sound, quietly at first, then gradually building up to the set volume. When an alarm sounds. The bell in the display flashes.

To turn alarms on or off in standby mode

- Press the **ALARM** button, the display shows the current alarm status. To switch the alarms on or off
- Press the **ALARM** button repeatedly to cycle through four states as shown below (F.11)



SNOOZE (AC OPERATION ONLY)

- To temporarily silence a sounding alarm, press the **SNOOZE** button once, you can change the snooze period by repeatedly pressing the **SNOOZE** button, Snooze periods are 5,10,15 and 30 minutes. The radio returns to standby for the set time period with Snooze countdown displayed. When the countdown reaches 0(zero) the alarm triggered again. (F.12) (F.13)
- Press the **STANDBY** button or the **SNOOZE** button to fully cancel a sounding alarm and switch the radio to standby.

F.12



F.13

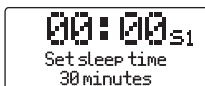


SLEEP (AC OPERATION ONLY)

This function allows you to program the unit to switch off itself after a set period of time.

- Press and hold **MENU** button, then press **TUN/CH ▼/▲** buttons to select "System", and press the **SELECT** button to confirm. Press **TUN/CH ▼/▲** buttons to select "Sleep", then press the **SELECT** button to confirm. Press **TUN/CH ▼/▲** buttons to change the sequence: Sleep Off /10/20/30/60/70/80/90 minutes. (F.14)
- To check the sleep interval remaining, press **TUN/CH ▼/▲** buttons to select "Sleep", then press the **SELECT** button to check.
- To cancel the sleep timer, press **TUN/CH ▼/▲** buttons to select "Sleep Off", then press the **SELECT** button to confirm

F.14



USING HEADPHONES (not included)

A stereo headphone jack has been provided so that the set can be used without disturbing others. Plug in the headphones at the point marked '🎧' and adjust the listening volume to your chosen level. Excessive sound pressure from earphones and headphones can cause hearing loss. The speakers will not operate when earphones are fitted.

RESET

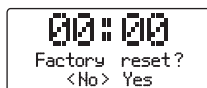
1. If moving the radio to another location in the country the pre-tuned and stored DAB stations may no longer be available and it will be necessary to reset the radio back to the factory settings.
2. With the unit switched on, press and hold the **MENU** button and press **TUN/CH ▼/▲** buttons until the display shows 'System' and press the **SELECT** button and continue press **TUN/CH ▼/▲** buttons until the display shows "Factory Reset <No> Yes' and press **TUN/CH ▼/▲** buttons to "<Yes>" and press the **SELECT** button. (F.15), (F.16)
3. The radio will display "Restarting...." and will then go into standby mode.

Note: All stored programmed stations will be lost during reset.

F.15



F.16



BACKLIGHT

The product display has a backlight with three brightness setting, Low/ Medium/ High with the unit switched on, press and hold the **MENU** button and press **TUN/CH ▼/▲** buttons until the display shows 'System', press the **SELECT** button to confirm. Press **TUN/CH ▼/▲** buttons until the display shows "Backlight" and press the **SELECT** button to cycle through "High/Medium/Low" and press the **SELECT** button to confirm the setting.

TECHNICAL SPECIFICATION

Rated voltage (adaptor)	AC 100 – 240V~ 50/60Hz, 0.3A
Adaptor output	DC 6V $\overline{=}$ 1A
Rated voltage (radio)	DC 6V (1.5V x 4 AA)
Power consumption	6 W
Audio output	RMS
Radio	DAB 174-240MHz FM 87.5-108MHz
Operating conditions Temperature:	5°C to 35°C
	Humidity 5% to 90%
Unit dimension :	116 (L) x 111(W) x 148 (H) mm
Weight :	0.62kg

SPECIFICATION SUBJECT TO CHANGE WITHOUT FURTHER NOTICE.