

COOKWORKS

HAND BLENDER INSTRUCTION MANUAL



IMPORTANT SAFETY

Please keep for future reference.

- Read all the instructions carefully before use
- Take special care when preparing food for babies, the elderly and infirm. Always ensure that the hand blender shaft is thoroughly sterilized. Use a sterilizing solution in accordance with the sterilizing solution manufactures instructions.
- This appliance shall not be used by children. Keep the appliance and its cord out of reach of children. Appliances can be used by persons with reduced physical, sensory or mental capabilities or lack of experience and knowledge if they have been given supervision or instruction concerning use of the appliance in a safe way and if they understand the hazards involved.

Children shall not play with the appliance.

This appliance is intended to be used in household and similar applications such as:

- staff kitchen areas in shops, offices and other working environments;
- by clients in hotels, motels and other residential type environments;
- bed and breakfast type environments;
- farm houses.

Always disconnect the blender from the supply if it is left unattended and before assembling, disassembling or cleaning.

Do not allow children to use the blender without supervision.

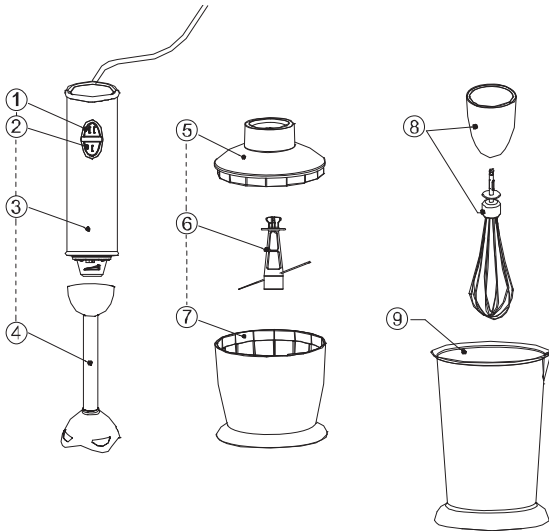
Care shall be taken when handling the sharp cutting blades, emptying the bowl and during cleaning.

Unplug from outlet when it is not in use, before putting on or taking off parts, before moving the appliance or adding the food , and before cleaning.

- If the supply cord is damaged, it must be replaced by the manufacturer or its service agent or a similarly qualified person in order to avoid a hazard.
- Switch off the appliance before changing accessories or approaching parts which move in use.
- Never touch the blades while the hand blender is plugged in.
- Keep fingers, hair, clothing and utensils away from moving parts.
- Unplug after use.
- Never blend hot oil or fat.
- Never use a damaged hand blender. Get it checked or repaired.
- Never immerse the power handle in water or let the cord or plug get wet - you could get an electric shock.
- Never let the cord touch hot surfaces or hang down where a child could grab it.
- Never use an unauthorised attachment.
- Before cleaning the appliance, it should be disconnected from the mains.
- Avoid touch the moving parts.

- With heavy mixtures, don't use your hand blender for longer than 50 seconds in any four minute period – it will overheat and damage to the motor.
- Only use your hand blender for its intended domestic use.
- Before plugging in, make sure your household electricity supply is the same as the one shown on the power handle.

KNOW YOUR APPLIANCE



- | | |
|---------------------------------|----------------------|
| 1. Speed button – High speed II | 6. Blade for chopper |
| 2. Speed button – Low speed I | 7. Bowl |
| 3. Power handle | 8. Metal Whisk |
| 4. Blender shaft (removable) | 9. Beaker |
| 5. Lid for Chopper | |

BEFORE THE 1ST USE

- Remove and throw away the packaging.
- Clean and blender shaft, beaker, chopper and metal whisk by warm soapy water. Dry through before use.
- Clean the power handle by damp cloth.

CONNECTION AND USE

Your blender is a two part assembly. The upper part contains the power handle and Speed button. The lower part is the blender shaft / Chopper / Metal Whisk.

To unlock

- Ensure to remove the plug from the mains first. Hold the power handle in the left hand and the blender shaft / Chopper / metal whisk in the right. Rotate the blender shaft / Chopper / metal whisk anticlockwise to separate the units.

To lock

- Ensure to remove the plug from the mains first. Hold the power handle in the left hand and the blender shaft / Chopper / metal whisk in the right. Offer the power handle up to the blender shaft / Chopper / metal whisk. Rotate the blender shaft / Chopper / metal whisk clockwise to the full. The assembly will now be firmly locked.

TO USE THE HAND BLENDER

You can blend baby food, soups, sauces, milk shakes and mayonnaise.

NOTE : Do not operate Hand blender longer than 60 secs at one time.

Stop and cool for 30 mins then resume.

For beaker blending

- Don't fill the beaker too full to avoid spillage when blending.

For saucepan blending

- Take the pan off the heat and let it cool slightly. Otherwise your hand blender could overheat.
 - Fit the power handle inside the blender shaft, turn and lock.
 - Plug in. To avoid splashing, place the blade in the food before switching on.
 - Hold the power handle steady, then press the button.
- Don't let liquid get above the join between the power handle and blender shaft.
- Move the blade through the food and use a stabbing action.
- If your blender gets blocked, unplug before cleaning.

- After use, unplug and dismantle.

TO USE THE CHOPPER

You can chop Onion , egg, nut, meat and fish (the meat and fish must without bone and tendon)

NOTE : Do not operate Chopper longer than 60 secs at one time. Stop and cool for 30 mins then resume.

- Put the blade in the bowl for the chopper and put the food on the side of the blade.
- Close the lid and fit the power handle.
- Hold the power handle and select the suitable speed (I / II) to start the chopping the food.
- Once the operation is finished, release the button to stop the chopper. Then unplug from the mains.
- Remove the power handle from the lid.
- Open the lid and take out the blade.

NOTE : Do not chop the food which is too hard, such as the meat and fish which with bone and tendon.

NOTE : If the chopper gets blocked, release the button to stop turning immediately. Unplug it from mains before cleaning.

TO USE THE METAL WHISK

You can blend eggs, soups, fruit juices, milk shakes and drink.

NOTE : Do not operate Blender with metal whisk longer than 120 secs at one time. Stop and cool for 30 mins then resume.

- Fit the metal whisk to the power handle.
- It is recommended to use the beaker (provided) or large bowl (not included) to put all the ingredients in for mixing.
- Immerse the metal whisk completely in the ingredients.
- Select the suitable speed (I / II) to start mixing the ingredients.
- Move the whisk up and down slowly and in circle to get the better results.

- Once the mixing is finished, release the button to stop the whisk. Then unplug from the mains.

NOTE : Do not blend hot oil, fat or meat.

NOTE : If the whisk gets blocked, release the button to stop turning immediately. Unplug it from mains before cleaning.

CLEANING

- Always switch off and unplug before cleaning.
- Don't touch the sharp blades.
- Always ensure that the hand blender shaft is thoroughly sterilized. Use a sterilizing solution in accordance with the sterilizing solution manufacturers instructions.

Power handle

- Wipe with a damp cloth, then dry.
- Never immerse in water or use abrasives.

Blender shaft / Metal Whisk

- Clean either by holding it under running water or with a brush dipped in a solution of washing up liquid and warm water to remove particles of food and grease from the blade. Do not wet the top of the housing which contains the drive shaft, or immerse it in liquid. Dry the unit carefully after cleaning.

Chopper / Beaker

- The bowl, blade and lid can be washed in warm, soapy water.

CONNECTION TO POWER

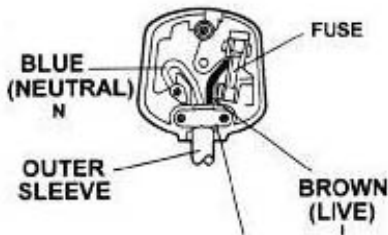
Before switching on, make sure that the voltage of your electricity supply is the same as that indicated on the rating plate.

Main cord

- This appliance may be fitted with a non-rewirable plug.
- If it is necessary to change the fuse in a non-rewirable plug the fuse cover must be refitted. If the fuse cover is lost or damaged, the plug must not be used until a replacement is obtained.
- It is important that the colour of the replacement fuse cover corresponds with the colour marking on the base of the plug.
- If the plug has to be changed because it is not suitable for your socket, or becomes damaged, it should be cut off and an appropriate plug fitted following the wiring instructions below.
- The plug removed must be disposed of safely as insertion into a 13A socket is likely to cause an electrical hazard. For your own safety read the following instructions carefully before attempting to connect this unit to mains. The wires in this mains lead are coloured in accordance with the following code:

BLUE = NEUTRAL

BROWN = LIVE



Important

- As the colours of the wire in the mains lead of this appliance may not correspond with the coloured markings identifying the terminals in your plug, proceed as following:
 - The wire which is coloured blue must be connected to the terminal which is marked with the letter N or coloured black.
 - The wire which is coloured brown must be connected to the terminal which is marked with the letter L or coloured red.
 - No connection is to be made to the earth terminal of the plug.
- If a 13 Amp (BS 1363) plug is used, a 3 Amp Fuse must be fitted, or if any other type of Plug is used, a 13 Amp Fuse must be fitted, either in the Plug or Adaptor, or on the Distribution Board.

DISPOSAL INFORMATION



This marking indicates that this product should not be disposed with other household wastes throughout the EU. To prevent possible harm to the environment or human health from uncontrolled waste disposal, recycle it responsibly to promote the sustainable reuse of material resources. To return your used device, please use the return and collection systems or contact the retailer where the product was purchased. They can take this product for environmental safe recycling.

GUARANTEE

This product is guaranteed against manufacturing defects for a period of 1 year.

This does not cover the product where the fault is due to misuse, abuse, use in contravention of the instructions, or where the product has been the subject of unauthorised modifications or alterations, or has been the subject of commercial use

In the event of a problem with the product within the guarantee period please return it to your nearest Argos store

If the item is shown to have had an inherent defect present at the time of sale, the store will provide you with a replacement

Your statutory rights remain unaffected

Guarantor; Argos Ltd
489 – 499 Avebury Boulevard
Central Milton Keynes
MK9 2NW