

**vax**<sup>®</sup>  
Power

**POWERFUL PERFORMANCE**

LET'S GET STARTED.

**U84-M1-Be**  
**U84-M1-Pe**  
**U84-M1-Re**  
**U84-M1-Te**



## Let's talk safety



### Basic safety precautions

- This vacuum cleaner is intended for household use only and NOT for commercial or industrial use.
- Only use the vacuum cleaner indoors on dry surfaces and keep the area you're cleaning well lit.
- Keep fingers, hair and loose clothing away from moving parts and openings whilst using the vacuum cleaner.
- This vacuum cleaner can be used by children aged from 8 years and above and persons with reduced physical, sensory



### Don'ts

- Don't use the vacuum cleaner if it has been dropped, damaged or left outdoors.
- Don't run over the power cord or use vacuum cleaner if the power cord or plug is damaged. Please contact our Customer Service Line on: 0330 026 8455 (Mon-Fri 08:30-18:30 Sat 09:00-17:00).
- Don't handle the plug or use the vacuum cleaner with wet hands.
- Don't pull or carry the vacuum cleaner by the power cord. Don't use the power cord as a handle, pull the power cord around corners, sharp edges or close a door over the power cord. Don't unplug the vacuum cleaner by pulling on the power cord.



### Do's

- Turn off all controls on the vacuum cleaner before disconnecting or connecting the plug from the mains socket.
- Always keep the power cord away from the brushes during use. After use always wrap the power cord around the cord clips provided.
- Always make sure both the pre-motor/post-motor filters are in place before use.
- This vacuum cleaner is fitted with a constantly rotating brushbar. To avoid damage to your flooring, make sure the brush bar is raised to the highest setting when using the accessories and when using on stairs.
- Always take extra care when positioning the vacuum cleaner on the stairs.

or mental capabilities or lack of experience and knowledge if they have been given supervision or instruction concerning use of the vacuum cleaner in a safe way and understand the hazards involved. Children shall not play with the vacuum cleaner. Cleaning and user maintenance shall not be made by children without supervision.

- Only Vax recommended tools should be used with the vacuum cleaner, use of non-branded Vax accessories/tools will invalidate your warranty.

- Don't vacuum up any flammable or combustible materials (lighter fluid, petrol, kerosene etc) or use the vacuum cleaner in an area with explosive vapours or liquid.
- Don't vacuum up hot coals, cigarette butts, matches or smoking hot burning items or use in an area where there may be harmful fluids (chlorine, bleach, and ammonia drain cleaner).
- Don't attempt to remove blockages with sharp objects. This may cause damage to the vacuum cleaner, remove blockages only as instructed in this guide.
- Don't vacuum up hard or sharp objects such as glass, nails, screws or coins etc.
- Don't use the vacuum cleaner with incorrect voltage as this may result in damage or injury to the user. The correct voltage is listed on the ratings label.

- Always switch off the vacuum cleaner before disconnecting or connecting the hose and accessories.
- Keep all openings clear and free from debris as this may affect the airflow/suction.
- Always replace the fuse in the plug with a British 13amp fuse. Always protect the power cable from heated surfaces and open flames.
- Use only CE approved 13amp extension cords, non-approved extension cords may overheat. Care should be taken to arrange the extension cord as it can be a trip hazard.
- Store the vacuum cleaner in a cool, dry area. If the filters have been cleaned as per user the guide instructions ensure they are thoroughly dry before storing away.

**PLEASE KEEP INSTRUCTIONS FOR FURTHER USE AND USE ONLY AS INSTRUCTED IN THIS GUIDE.**

# Thank you for buying this Power vacuum

## Taking care of your carpets and hard floors

The Power is designed to make vacuuming carpets and hard floors regularly, as effective and efficient as possible and this user guide will help you get the most out of your machine.

Maintaining your carpets and hard floor will ensure they keep their appearance for longer. You've chosen the carpets and hard floors for your home for a reason and Vax will help you take good care of them.

## Taking care of your Power

Also inside this guide are instructions on maintaining your new machine, so that it's always ready when you are to tackle your carpets and hard floors.

## Taking care of you

We're here if you need us. Instead of taking me back to the shop, simply visit:

**vax.co.uk/support** or call:

(UK) **0330 026 8455** (ROI) 1-800 928 308

**Monday-Friday 8:30am to 6:30pm, Saturday 9:00am to 5:00pm**

Calls are charged at the UK local rate. Please make a note of the serial number and model number of the product before calling.

Alternatively, you can write to us at:

**Vax Ltd., Plot 302, Stonebridge Cross Business Park, Hampton Lovett, Droitwich, Worcestershire, WR9 0LW, UK**

**This user guide can be found online at: [vax.co.uk/support](http://vax.co.uk/support)**

The Vax logo is displayed in a bold, orange, sans-serif font. The letters are lowercase, with the 'v' and 'x' being particularly prominent. A registered trademark symbol (®) is located at the top right of the 'x'.

Let us know what you think **@VaxUK**

# Contents

Let's talk safety

Getting to know your machine

Getting started

Using your machine

Taking care of your machine

Let's talk technical

Accessories

What to do if it goes wrong

Getting in touch

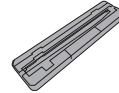
Notes

## Power

### Included with your machine



2-in-1 tool



Hard Floor Adaptor

### Power Pet/Reach

Includes all the above, plus



TurboTool

### Power Total Home

Includes all the above, plus



Up-Top-Tool

# Getting to know your machine

Handle

Dirt container release button

Cord hook

Separator

Dirt container

Cord hook

Post motor filter and cover

Height adjuster dial

Brushbar

Hose guide

Stretch hose

Handle release clip

Hose guide

Accessory hose

On/Off pedal

## Technical Specification

Name **Power**  
Voltage **220-240V-50Hz**  
Wattage **850W**  
Cord length **6-8m**  
Weight **6.1kg**

## Accessories & Consumables

Pre-motor Filter  
**1-7-137046**

Post-motor Filter  
**1-7-137047**

Pro Cleaning Kit (Type 2)  
**1-1-133326-00**

TurboTool (Type 5)  
**1-1-134418-00**

Flat Upholstery Tool  
**1-1-131394-00**

Flexi Crevice Tool (Type 2)  
**1-1-131393-00**

2 in 1 Tool (Type 3)  
**1-1-132332-00**

Subject to technical change without notice.

To purchase consumables and accessories, please visit [vax.co.uk](http://vax.co.uk)

**PLEASE READ 'LET'S TALK SAFETY' AT THE BEGINNING BEFORE USE**

## Before you begin

**WARNING:** Always switch off the vacuum cleaner before connecting or disconnecting the hose/attachments or removing and emptying the dirt container.

**IMPORTANT:** The vacuum cleaner is equipped with a thermal cut-out. If for any reason the vacuum cleaner does overheat the thermostat will automatically turn the vacuum cleaner off. If this happens switch the vacuum cleaner off and unplug from electrical socket. Remove and empty the dirt container also check the vacuum cleaner for blockages. Allow the vacuum cleaner to cool for approximately 1 hour (if you have cleaned the filters please wait 24 hours for the filters to fully dry before putting back into the machine).

For best cleaning results, filters should be tapped over a bin every 4-6 uses to remove dirt and debris and washed every 3 to 6 months (depending on the level of use).

If the vacuum cleaner is blocked, switch off and unplug before removing the blockage.

When the vacuum cleaner is stood in the upright position, or when using the hose and tools the brushbar height adjuster must be set to the highest setting.

## Assembling your vacuum cleaner



Press the release clip on the stretch hose, line up and push the hose into the handle.



Slide the handle down into the main body of the vacuum cleaner.



Line up the stretch hose with hose guides, push and clip stretch hose into place. The end of the stretch hose will hang loose at the bottom of the machine

# Using your machine

**IMPORTANT:** Always switch off the vacuum cleaner before disconnecting or connecting the hose and accessories. The accessories can be attached to the handle or directly to the hose.

When using accessories on the hose/handle raise the height adjuster to the highest setting.



Plug vacuum cleaner into the mains and switch on.



Turn height adjuster dial to desired setting.



Place foot on floorhead and pull handle to recline.



Press the on/off pedal to switch on.

## Using the hard floor tool



Lie vacuum cleaner on its back exposing the brush bar.



Line up floor tool with the base of the vacuum cleaner, push until it clicks into place.

To make sure the floor tool is correctly fitted, the wheels should be towards the back of the floor tool when attached to vacuum cleaner.





# Using your machine

**IMPORTANT:** Always switch off the vacuum cleaner before disconnecting or connecting the hose and accessories. The accessories can be attached directly to the hose.

This vacuum cleaner is fitted with a constantly rotating brush bar. To avoid damage to your flooring, make sure the brush bar is raised to the highest setting when using the accessories.

## Using the hose and accessories



Pull and release the stretch hose from hose guides.



Unclip the hose end on the accessory hose. Pull and remove accessory hose from the base of vacuum cleaner.



Line up and push the end of the stretch hose onto the accessory hose until it clicks into place.



Press the release clip on the stretch hose, pull and remove stretch hose from handle.



Push and attach the 2-in-1 crevice/dusting brush, TurboTool or Above Floor Tool (some models only) onto the end of the stretch hose.



Turn the brushbar height adjuster dial to highest setting before pressing the on/off pedal to switch the vacuum on.

# Using your machine

**IMPORTANT:** Always switch off the vacuum cleaner before disconnecting or connecting the hose and accessories. This vacuum cleaner has a constantly rotating brush bar. When cleaning on stairs raise the height adjuster dial to the highest setting. The brush bar must over hang the stair tread. Always take extra care when cleaning stairs.

## Using the handle and accessories



Pull and release the stretch hose from hose guides.



Unclip the hose end on the accessory hose. Pull and remove accessory hose from the base of vacuum cleaner.



Line up and push the end of the stretch hose onto the accessory hose until it clicks into place.



Press the handle release clip, pull and remove the handle out of the main body.



Attach the 2-in-1 crevice/dusting brush to the end of the handle.



Turn brush bar height adjuster dial to highest setting before pressing the on/off pedal to switch the vacuum on.

# Taking care of your machine

**IMPORTANT:** The motor is equipped with a thermal cut-out. If for any reason the machine should overheat, the thermostat will automatically turn the machine off. Switch off and unplug the vacuum cleaner. Check the machine for blockages and clean the filters. Wash the filters with warm water (40°C max) and leave for 24 hours or until fully dry before replacing into the machine.

For best cleaning results, filters should be tapped over a bin every 4-6 uses to remove dirt and debris and washed every 3 to 6 months (depending on the level of use).

Don't use your vacuum cleaner without all of the filters in place.

## Emptying the dirt container



Press the dirt container release button, pull and remove the dirt container.



Hold the dirt container over a bin.



Press the dirt release clip, allowing dirt/debris to fall out.

Don't over fill the dirt container to avoid blocking the air flow through the vacuum cleaner and replace filters every 6-9 months.



## Cleaning the pre-motor filter



Turn the dirt container lid anti-clock wise, lift and remove the lid from dirt container.



Pull the filter tab and remove the pre-motor filter.



Tap the filter over a bin to remove any dirt/debris. Wash the filter under running water (40°C max).



Leave for 24hrs or until fully dry before replacing.

# Taking care of your machine

## Cleaning the separator



Turn the dirt container lid anti-clock wise , lift and remove the lid from dirt container.



Pull the filter tab and remove the pre-motor filter.



Lift the separator out of the dirt container.



Tap the separator over a bin to remove any dirt/debris.



Using a dry cloth wipe the remaining dirt /debris from the shroud.



Re fit the separator making sure both rectangular holes in the dirt container and separator line up.

## Post-motor filter maintenance

The post-motor filter is designed to offer long life with no maintenance. The filter should be checked periodically and when heavily discoloured it should be replaced. Please do not wash, scrub or brush the filter as this will damage the filter.



Press the release clip on the post-motor filter cover, pull to remove cover then pull and remove post-motor filter.



Check the post-motor filter for any discoloration.



Don't use your vacuum cleaner without all of the filters in place.

**CAUTION**



**IMPORTANT:** Unplug and switch off vacuum cleaner before performing maintenance or troubleshooting checks.

## Removing debris from the brushbar



Using a pair of scissors remove any threads or hair caught around the brush bar.

## Removing blockages from the TurboTool



Slide the locking ring to remove.



Lift and separate the housing. Using a pair of scissors remove any threads or hair caught around the brushbar.



Line up the tabs on front of housing and re-fit. Slide locking ring into groove to secure.

## Removing a blockage from the hose



Press the release clip on the stretch hose, pull and remove hose from the handle.



Insert a broom handle or similar blunt instrument into the hose to remove blockage.

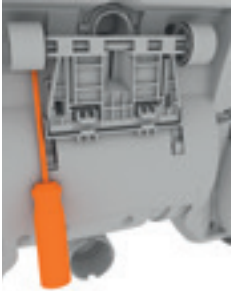
To test for a blockage in hose, drop a small ball of paper through the hose. The paper will drop through if the hose is clear.



# Let's talk technical

**IMPORTANT:** If the brushbar does not rotate easily then the belt may not have been fitted correctly. Make sure the belt is not twisted.

## Replacing the belt



Switch off your vacuum cleaner at the main socket and unplug. Unclip the 2 small wheels from the base of the vacuum to enable you to remove the screws from behind. Note: The screw for the height adjuster dial is located here.



Remove the 9 screws from the base of the floorhead cover.



Remove the floorhead cover.



Lift the brushbar from the machine to remove the belt. Remove and dispose of the old belt. Remove any threads or hair caught around the brushbar



Clean any debris from the spindle and place the new belt onto the brushbar and hook onto the spindle.



Once the belt has been replaced attach the brushbar back onto the vacuum.



Replace the floorhead cover, 2 small wheels and height adjuster dial by screwing back into place.

# Don't forget your accessories!

Order at: [www.vax.co.uk/spares-and-solutions](http://www.vax.co.uk/spares-and-solutions)

## Pro cleaning kit

**1-1-133326-00**

All our best tools all in one kit that makes cleaning your home quicker, easier and with even better results. We've taken care of cleaning all of the hard to reach areas such as on top of cupboards and in between blinds to the dust that collates behind and within the radiator.



## Flexi Crevice Tool

**1-1-131393-00**

A handy long, flexible tool for getting far behind and around furniture.



## TurboTool (Type 5)

**1-1-134418-00**

Use the TurboTool for vacuuming your stairs, upholstery and car interiors. It's great for picking up stubborn pet hair.



## Flat Upholstery Tool

**1-1-131394-00**

Cleans large areas of upholstery like sofas and curtains, quickly and effectively.



## 3-in-1 Tool

**1-1-129167-00**

3-in-1 tool includes crevice tool for awkward areas and corners, dusting brush for areas such as skirting and an upholstery tool for cleaning sofas, curtains, chair seats and car interiors.



# What to do if it goes wrong

## Problem

Is there an accessory missing?

## Solution

- Check the 'This pack contains' panel on the box to make sure the part is included with your vacuum cleaner.
- 

Why does my vacuum cleaner have no power?

- The plug may not be fully pushed into the electrical socket.
  - Check the fuse in the plug if this needs replacing, always replace with a 13amp fuse.
  - The motor thermostat may have tripped. If this has happened, unplug the vacuum cleaner. Remove and empty the dirt container and check the hose for blockages. Clean the filters and allow the vacuum cleaner to cool for approximately 1 hour (if you have washed the filters you will need to wait 24 hours for the filters to fully dry before putting them back into the vacuum cleaner).
- 

Why won't the vacuum cleaner pick up?

- Empty the dirt container and clean filters. Go to 'Taking care of your machine'.
  - There may be a blockage in the hose. Remove the hose from the vacuum cleaner, check and clear any blockages. Go to 'Let's talk technical'.
  - The brushbar may not be turning. Go to 'My brushbar isn't turning' below.
  - The brushbar height adjuster dial may not be set to the correct setting. Go to 'Using your machine'.
  - Make sure the hard floor adaptor is attached/unattached dependant on the floor surface.
  - If the accessory/tool will not pick up, check and clear any blockages. Go to 'Let's talk technical'.
- 

Why isn't the brushbar turning?

- The brush bar may be clogged, check the brushbar and clear any hair or debris Go to 'Let's talk technical'.
- The belt may be broken, Go to 'Let's talk technical'.



It's quick and easy to  
register for your **FREE**

**2 year  
guarantee<sup>†</sup>**

Online at: **vax.co.uk/guarantees**

Please retain your original receipt for proof of purchase.

**we're here if you need us**

Online **vax.co.uk/support**

Call: (UK) **0330 026 8455** (ROI) 1-800 928 308

Monday-Friday 8:30am to 6:30pm, Saturday 9:00am to 5:00pm\*

Alternatively, you can write to us at:

Vax Ltd, Plot 302, Stonebridge Cross Business Park, Hampton Lovett, Droitwich,  
Worcestershire, WL9 0LW, UK

<sup>†</sup> Registration required. Terms and conditions apply, see vax.co.uk for details.

\* Calls are charged at the UK local rate. Please make a note of the serial number and model number of the product before calling.



## Notes



## GET IN TOUCH

 0330 026 8455    [info@vax.co.uk](mailto:info@vax.co.uk)    [vax.co.uk](http://vax.co.uk)    [VaxVacuums](https://www.facebook.com/VaxVacuums)    [@VaxUK](https://twitter.com/VaxUK)

**EEC Statement of Compliance:** Manufacturer/EEC importer: Vax Limited, hereby on our own responsibility, declare that the U84-M1-(Be/Pb/Re/Te) manufactured in compliance with the following Directives: **Safety:** 2006/95/EC Low Voltage Directive. **EMC:** 2004/108/EC Electromagnetic Compatibility Directive.

Waste electrical products should not be disposed of with household waste. Please recycle where facilities exist. Check with your Local Authority or retailer for recycling advice.

© 2015 All rights reserved. VAX®, VAX Logo, are trade marks or registered trade marks of Techtronic Floor Care Technology Ltd.

