

# NINJA®

OWNER'S GUIDE

BL490UK



[www.ninjakitchen.eu](http://www.ninjakitchen.eu)



0800 862 0453

# NINJA


Welcome to the Nutri Ninja® with Auto-iQ® Pro Compact System all-purpose, customisable, everyday kitchen assistant. The Nutri Ninja with Auto-iQ Pro Compact System features pre-programmed settings that take the guesswork out of drink and meal making. These programs are timed to deliver consistent, delicious results that finish on their own so all you have to do is press a button and enjoy.


Select accessories are included. Additional accessories are available for purchase at [www.ninjakitchen.eu](http://www.ninjakitchen.eu). For a list of what is included with this model, refer to the top of the box or online.

If you should have a question about your Nutri Ninja with Auto-iQ Pro Compact System, please call the Ninja Customer service line at 0800 862 0453.

## THANK YOU!

### REGISTER YOUR PURCHASE:

 [www.ninjakitchen.eu](http://www.ninjakitchen.eu)

 0800 862 0453

### RECORD THIS INFORMATION:

Model Number: \_\_\_\_\_

Date of Purchase (Keep receipt): \_\_\_\_\_

### THIS BOOK COVERS MODEL NUMBER:

BL490UK 30

### TECHNICAL SPECIFICATIONS:

**Voltage:** 220-240V~, 50/60Hz

**Power:** 1200W

**Processor Bowl Capacity:** 1.2 L

**Nutri Ninja® Cup Capacity:** 500ml  
650ml

This appliance complies with the WEEE-Directive 2012/19/EU on the disposal of electrical and electronic equipment (WEEE).



This marking indicates that this product should not be disposed with other household wastes throughout the EU. To prevent possible harm to the environment or human health from uncontrolled waste disposal, recycle it responsibly to promote the sustainable reuse of material sources. To return your used device, please use the return and collection systems or contact the retailer where this product was purchased. They can take this product for environmental safe recycling.

This appliance complies with the European directives for electromagnetic compatibility (EMC) 2004/108/EC and its revisions, as well as Low Voltage Directive (LVD) 2006/95/EC and its revisions.

**Guarantee:** This product is unconditionally guaranteed for one year against all defects of workmanship and materials. This guarantee does not affect your statutory rights. If this product proves unsatisfactory please contact our customer service department on freephone 0800 862 0453 or by e-mail [ukservice@euro-pro.com](mailto:ukservice@euro-pro.com).



## IMPORTANT SAFEGUARDS








When using an electrical appliance, basic safety precautions should always be observed, including the following:

**IMPORTANT: This appliance is not intended for use by persons with reduced physical, sensory or mental capabilities, or lack of experience and knowledge, unless they have been given supervision or instruction concerning use of the appliance by a person responsible for their safety.**

**Children shall not use or play with this appliance. Close supervision is necessary to keep appliance and cord out of reach of children during use.**

### WARNING

**TO REDUCE THE RISK OF FIRE, ELECTRIC SHOCK OR INJURY:**

- 1  **WARNING: Extension cords are not recommended for use with this product.**
- 2  **WARNING: Never leave the appliance unattended while in use.**
- 3  **CAUTION: In order to avoid a hazard due to inadvertent resetting of the thermal cut-out, this appliance must not be supplied through an external switching device, such as a timer, or connected to a circuit that is regularly switched on and off by the utility.**
- 4  **CAUTION: Blade assembly is sharp, handle with care. When handling the blade assembly, always hold by the top of the blade assembly.**
- 5  **CAUTION: DO NOT BLEND HOT LIQUIDS. Allow hot ingredients to cool before processing.**
- 6  **CAUTION: DO NOT process dry ingredients without adding liquid to the cup. This product is not intended for dry blending.**
- 7  **CAUTION: Never attempt to remove the container (cup, processor bowls, etc.) while the appliance is still running.**
- 8 **IMPORTANT: Never add ingredients to the containers (processor bowl, etc.) before inserting the blade assembly first.**
- 9 **IMPORTANT: Do not attempt to operate the container (processor bowls, etc.) without the lid on.**
- 10 **IMPORTANT: Never run the appliance empty.**
- 11 **IMPORTANT: Make sure that the motor base is plugged in for use.**
- 12 **IMPORTANT: Make sure that the motor base is unplugged when not in use.**
- 13 To protect against electrical shock, do not submerge the appliance or allow the power cord to come into contact with water or any other liquid.
- 14 DO NOT allow young children to operate the appliance or use as a toy. Close supervision is necessary when any appliance is used by or near children.
- 15 Never leave the appliance unattended when in use.
- 16 Turn the appliance off and remove the power cord from the electrical outlet when not in use, before assembling or disassembling parts, accessing parts that move while in use and before cleaning. To unplug, grasp the plug and pull from the electrical outlet. Never pull from the power cord.
- 17 DO NOT abuse the power cord. Never carry the appliance by the power cord or yank it to disconnect from the electrical outlet; to unplug, grasp the plug, not the cord.
- 18 DO NOT use with damaged cord or plug.
- 19 DO NOT USE if the appliance is not working, after it has been dropped, dropped into water, damaged or left outdoors.
- 20 NO SERVICEABLE PARTS. Incorrect re-assembly or repair can cause a risk of electrical shock or injury to persons when the appliance is used.
- 21 DO NOT let the power cord hang over the edge of a table or counter or touch hot surfaces such as the stove.
- 22 Always use the appliance on a dry, level surface. Make sure the suction-cup feet are wiped clean and no crumbs or residue are on the bottom of them.
- 23 Keep hands, hair, clothing, and utensils out of container while processing to reduce the risk of severe injury to persons or damage to the appliance. A scraper may be used ONLY when the appliance is not running.
- 24 Avoid contact with moving parts.
- 25 DO NOT attempt to sharpen blade assemblies.
- 26 DO NOT use the appliance if the blade assembly is bent or damaged.
- 27 To reduce risk of injury, never place the blade assembly on the motor base without the proper container.
- 28 DO NOT operate this appliance on or near any hot surfaces (such as on a gas or electric burner or in a heated oven).
- 29 The use of attachments or accessories (including canning jars), that are not recommended or sold by the manufacturer may cause fire, electric shock, or personal injury.
- 30 DO NOT remove the container (cup, processor bowl, etc.) from the motor base while the appliance is running.
- 31 To reduce the risk of injury, NEVER operate the appliance without the blade assembly installed in a container. DO NOT try to defeat the interlock mechanism; make sure the blade is properly installed before operating the appliance.
- 32 DO NOT expose containers (cups, processor bowls, etc.) to extreme temperature changes.
- 33 DO NOT overfill.
- 34 Max ON time is 60 seconds under 1200W load. If the appliance overheats, a thermal switch will become activated and shut off the motor. To reset, unplug the appliance and let it cool down for approximately 30 minutes before using again.
- 35 MAX Chop program run is 2 full runs (30 pulses). After 2 consecutive Chop program runs allow 10 minutes to pass before running the Chop program again for up to an additional further 2 consecutive runs (30 pulses).
- 36 To reduce the risk of burns, always allow the appliance to cool before taking off parts and before cleaning.
- 37 To avoid injury, never attempt to place the Pro Extractor Blades™ onto the motor base without first assembling the blade assembly to the Nutri Ninja® Cup.
- 38 THIS PRODUCT IS INTENDED FOR HOUSEHOLD USE ONLY. Do not use this appliance for anything other than its intended use. Do not use outdoors.
- 39 Appliance accessories are NOT intended to be used in the microwave. DO NOT place the container (cups, processor bowls, lids, etc.) in the microwave as it may result in damage to the accessories.
- 40 The maximum power rating is based on the chopping blade (processor bowl) that drives the greatest power; other recommended attachments may draw significantly less power or current.

## SAVE THESE INSTRUCTIONS

FOR HOUSEHOLD USE ONLY

 0800 862 0453

# NINJA

---

## Nutri Ninja® Cups

⚠ WARNING: DO NOT BLEND HOT LIQUIDS



## (2) Sip & Seal® Lids

NOTE: Sip & Seal lid and Pro Extractor Blades can be used with all Ninja Cups.



## Pro Extractor Blades™

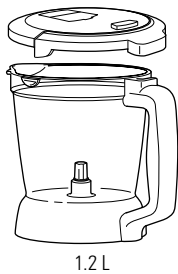


## ACCESSORIES

Select accessories are included. Others are available for purchase at [www.ninjakitchen.eu](http://www.ninjakitchen.eu) or by calling 0800 862 0453.

---

## Processor Bowl



## Chopping Blade (food processor)



## Dough Blade (food processor)



# NINJA

---

## FEATURES:

- Nutrient & Vitamin Extraction†
- 1200 Watt Motor
- User Interface:

### **Start/Stop**

Start/Stop is a manual setting that runs at High speed for 60 seconds. This button can be pressed at any time if you wish to stop a program.

### **Smooth Boost™**

SMOOTH BOOST YES/NO is a special feature available when using the Auto-iQ® EXTRACT and Auto-iQ BLEND. This setting can be used to control the consistency of your beverage recipes. Select SMOOTH BOOST YES when smoother, creamier results are desired. This is the default program for both Auto-iQ EXTRACT and Auto-iQ BLEND programs. Select SMOOTH BOOST NO when more of a textured consistency is desired.

### **Pulse**

Offers greater control to help prevent over-processing or over-blending. Simply hold down the button and our blades will run at a high speed for a quick burst of power to break through ice or chop vegetables.

### **Low**

LOW is a manual setting that runs for 30 seconds and will automatically shut off. On this setting, blades rotate at a slower speed, allowing heavy recipes like doughs to be mixed.

### **AUTO-IQ EXTRACT†**

EXTRACT should be used when blending hard, leafy, or fibrous whole fruits and vegetables, including apples, kale, and celery. This optimized program allows you to blend fresh items with their skins, seeds, and stems into nutrient extractions. Before using EXTRACT, select Smooth Boost YES or NO depending on your desired consistency.

### **AUTO-IQ BLEND**

BLEND can be used to make a range of beverages that do not include hard or fibrous fresh ingredients, such as milkshakes, protein smoothies, soft fresh-fruit smoothies, and frozen cocktails. Before using BLEND, select SMOOTH BOOST YES or NO depending on your desired consistency.

### **AUTO-IQ CHOP**

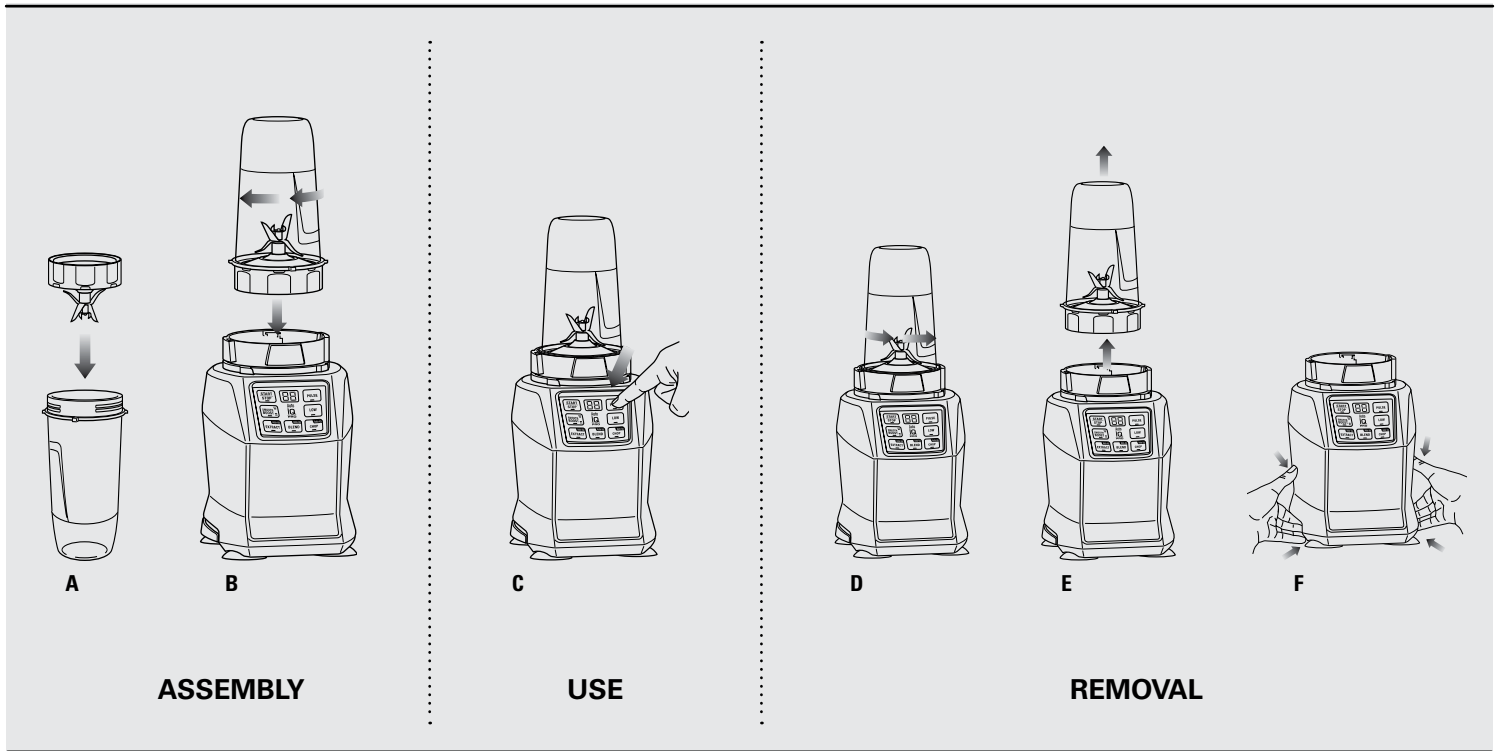
CHOP is a program composed of timed pulses and pauses to deliver consistent chopping results for a range of recipes including ingredient prep, salsas, and ground meat. When ingredients have reached your desired consistency, stop by selecting AUTO-IQ CHOP or Start/Stop.

- Sip & Seal® lids for drinks on the go.
- Nutri Ninja® Cups and Sip & Seal lids, BPA free, and dishwasher safe.
- 1.2 L Food Processor Bowl & lid, are BPA free, and dishwasher safe.
- Cord Wrap located on back of the motor base.

### **Ice to Snow**

Crushing Ice to Snow is easy – take ice cubes directly from your freezer, and put in a dry Ninja® Cup – use the pulse feature in short quick bursts until it's a snow like consistency.

†Extract a drink containing vitamins and nutrients from fruits and vegetables.



## ASSEMBLY

## USE

## REMOVAL

For best results, follow the recipe/ingredient loading instructions found in your Inspiration Guide.

**⚠ CAUTION: DO NOT BLEND HOT LIQUIDS.** ALLOW THE LIQUIDS OR FOODS TO COOL TO ROOM TEMPERATURE BEFORE BLENDING.

**IMPORTANT: DO NOT OVERFILL. TO AVOID SPILLING, DO NOT ADD INGREDIENTS PAST THE "MAX" FILL LINE.**

### ASSEMBLY & USE OF THE NUTRI NINJA® CUP

**NOTE:** Ninja® Auto-iQ® Technology can sense which container is on the motor base. The function lights will illuminate depending on which Nutri Ninja Cup is placed on the motor base.

#### BEFORE FIRST USE:

- Remove all packaging material and labels from the appliance.
- Wash the lids, cups, blades, and processor bowl in warm, soapy water with a soft cloth.
- Rinse and dry thoroughly.
- Lids, cups, blades, and processor bowl are all dishwasher safe. It is recommended that the lids and attachments be placed on the top rack. Ensure that the Pro Extractor Blades™ are removed from the cups before placing in the dishwasher.
- Wipe the motor base clean with a damp cloth.

#### ASSEMBLY:

**⚠ WARNING: NEVER LEAVE THE APPLIANCE UNATTENDED WHILE IN USE.**

**⚠ CAUTION: USE CAUTION WHEN HANDLING THE BLADE ASSEMBLY AS IT IS VERY SHARP.**

**IMPORTANT: MAKE SURE THE MOTOR BASE IS PLUGGED IN FOR USE.**

- 1 Place the motor base on a clean, dry, level surface such as a counter or tabletop. Press down on the motor base to make sure the suction cups adhere to the counter or tabletop.
- 2 Add ingredients to the Nutri Ninja cup.
- 3 Place the Pro Extractor Blades onto the cup and tightly screw on clockwise (A) until you have a good seal.
- 4 Turn the Nutri Ninja cup upside down and place it onto the motor base (B), aligning the tabs on the cup with the motor base. Rotate the Nutri Ninja cup clockwise until it locks in place (you will hear a click when the lock is engaged).

#### USE:

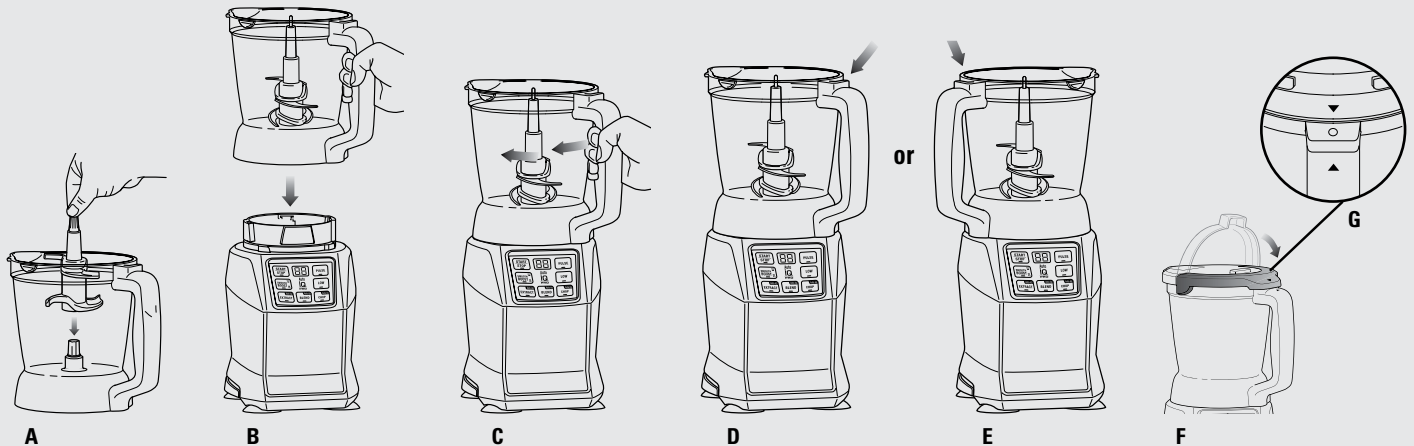
- 5 Once the cup is engaged, the programs available for that attachment will illuminate. Select the program (C) desired based on your recipe. The Auto-iQ program will stop the appliance automatically at the end of the program.
- 6 To pause the program, press the selected speed or Auto-iQ Program a second time.

#### REMOVAL:

- 7 Once you have reached your desired consistency, press the Power button to turn the program off. Turn the Nutri Ninja cup anticlockwise (D) and pull straight up to remove (E).
- 8 Turn the cup upright and remove the Pro Extractor Blades by twisting the Pro Extractor Blades anticlockwise.
- 9 Place the Sip & Seal® lid onto the Nutri Ninja cup, twist to seal, and enjoy!
- 10 Make sure the appliance is unplugged when not in use.
- 11 To release the motor base from the counter or tabletop, place your fingers under the sides of the black paddles on the sides of the base and lift up to release suction cup feet (F).



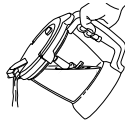
## 1.2 L PROCESSOR BOWL



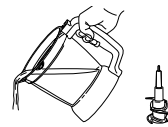
### ASSEMBLY

If your unit comes with this accessory, read the following instructions. For a list of what is included with this model, refer to inside flap of the box.

**⚠ CAUTION: CHOPPING BLADE IS NOT LOCKED IN PLACE. IF USING THE POUR SPOUT, ENSURE THE LID IS FULLY LOCKED ONTO THE BLEND AND PREP BOWL.**



**⚠ CAUTION: THE CHOPPING BLADE IS NOT LOCKED IN PLACE. IF POURING WITH THE LID REMOVED, ALWAYS REMOVE THE CHOPPING BLADE FIRST.**



**IMPORTANT: DO NOT OVERFILL. TO AVOID SPILLING, DO NOT ADD INGREDIENTS PAST THE "MAX" FILL LINE.**

### ASSEMBLY OF THE PROCESSOR BOWL

**NOTE:** Ninja® Auto-iQ® Technology can sense which jar is on the motor base. The function lights will illuminate depending on which container is placed on the motor base.

#### ASSEMBLY:

**⚠ WARNING: NEVER LEAVE THE APPLIANCE UNATTENDED WHILE IN USE.**

**⚠ CAUTION: USE CAUTION WHEN HANDLING THE CHOPPING BLADE AS IT IS VERY SHARP.**

**IMPORTANT: MAKE SURE THE MOTOR BASE IS PLUGGED IN FOR USE.**

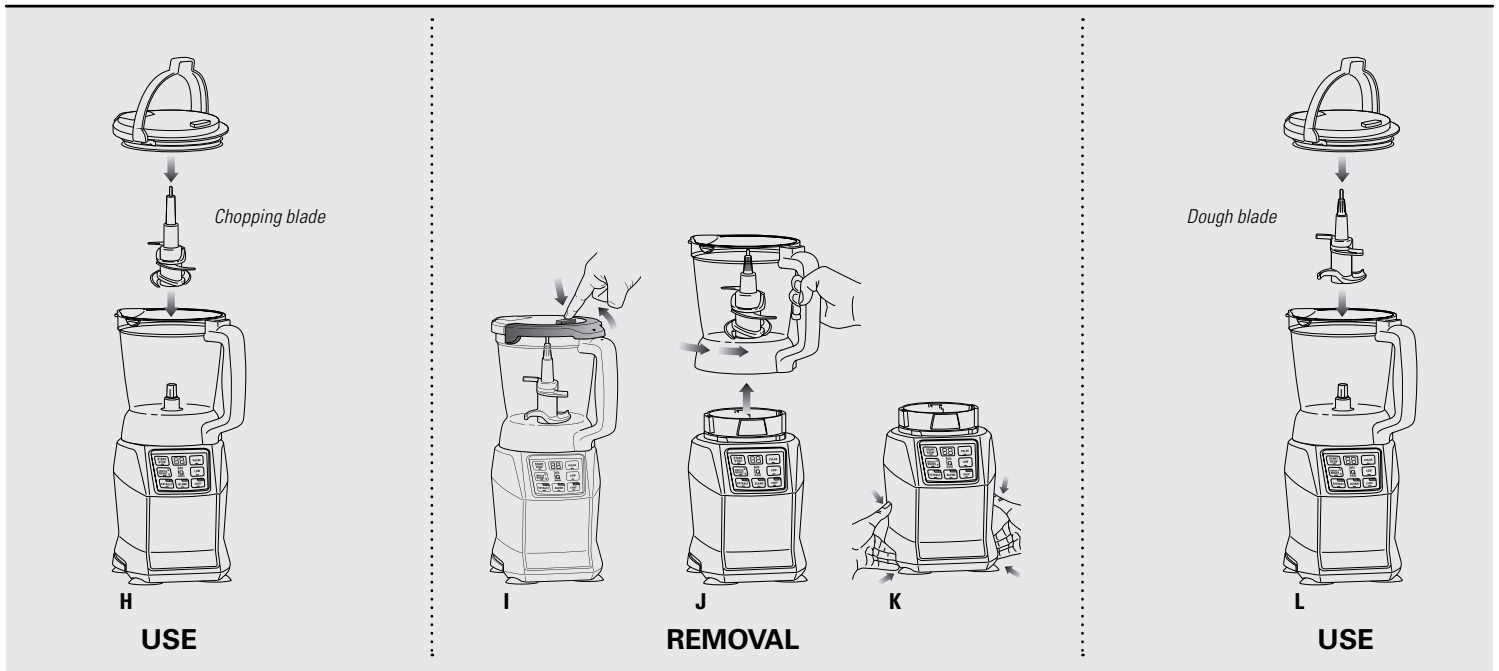
- 1 Holding the desired blade by the top of the shaft, place it onto the drive gear (A) inside the bowl. Ensure that the attachment is seated properly and is standing upright.

**NOTE: THE CHOPPING BLADE WILL FIT LOOSELY ON THE DRIVE GEAR.**

- 2 Place the motor base on a clean, dry, level surface such as a counter or tabletop. Press down on the motor base to make sure that the suction cups adhere to the counter or tabletop.
- 3 Align and lower the Processor Bowl (B) onto the motor base. Handle should be aligned slightly to the right of the **LOCK** symbol on the motor base.
- 4 Rotate the Processor Bowl clockwise (C) until it locks in place (you will hear a click when the lock is engaged).
- 5 The bowl can be placed on the motor base two ways; the handle can be on the front right corner (D) or the front left corner (E).

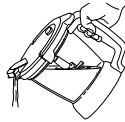
- 6 Add the ingredients to the bowl, making sure they do not exceed the highest measured marking line on the side of the bowl.
- 7 Holding the lid by the handle in the upright position (F), place it on top of the bowl aligning the triangle (▼) located on the lid with the triangle (▲) located on the bowl handle. Press the handle down until you hear a click.
- 8 The triangles on the lid and the Processor Bowl handle (G) **MUST** be aligned for the blender to turn on.
- 9 Plug the power cord into the electrical outlet. The function lights will illuminate.

# NINJA

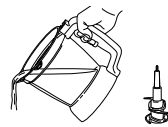


If your unit comes with this accessory, read the following instructions. For a list of what is included with this model, refer to inside flap of the box.

**CAUTION: CHOPPING BLADE IS NOT LOCKED IN PLACE. IF USING THE POUR SPOUT, ENSURE THE LID IS FULLY LOCKED ONTO THE BLEND AND PREP BOWL.**



**CAUTION: THE CHOPPING BLADE IS NOT LOCKED IN PLACE. IF POURING WITH THE LID REMOVED, ALWAYS REMOVE THE CHOPPING BLADE FIRST.**



**IMPORTANT: DO NOT OVERFILL. TO AVOID SPILLING, DO NOT ADD INGREDIENTS PAST THE "MAX" FILL LINE.**

## USING THE CHOPPING BLADE & DOUGH BLADE

### USING THE CHOPPING BLADE:

**CAUTION: USE CAUTION WHEN HANDLING THE CHOPPING BLADE AS THE BLADES ARE VERY SHARP.**

- 1 Holding the Chopping Blade assembly by the top of the shaft (H), place it onto the gear shaft inside the bowl. Ensure that the attachment fits around the gear shaft and that it is standing straight.
- 2 Add the ingredients and secure the bowl lid onto the bowl.
- 3 Plug the power cord into the electrical outlet. Once the bowl is engaged, the programs available for that attachment will illuminate. Select the program desired based on your recipe. The Auto-iQ® program will stop the appliance automatically at the end of the program.

- 4 When you have reached your desired consistency, stop the appliance by pressing the **START/STOP** button or selecting the program twice. Wait for the blade to stop turning.

### REMOVAL:

- 5 To remove the lid, press the release button (I) on the lid and pull the lid handle up to a 90° angle.
- 6 Turn the bowl anticlockwise and lift it to remove it from the motor base (J).
- 7 Make sure that the motor base is unplugged when not in use.
- 8 To release the motor base from the counter or tabletop, place your fingers under the sides of the black paddles on the sides of the base and lift up to release suction cup feet (K).

### USING THE DOUGH BLADE:

**IMPORTANT: This makes 500g of dough at a time. Do not overfill or exceed. Motor may overheat.**

- 1 Holding the Dough Blade assembly by the top of the shaft (L), place it onto the gear shaft inside the bowl. Ensure that the attachment fits around the gear shaft and that it is standing straight.
- 2 Add the ingredients and secure the bowl lid onto the bowl.
- 3 Plug the power cord into the electrical outlet. Press the **START/STOP** button to turn on the unit. Once the bowl is engaged, the programs available for that attachment will illuminate. Select **LOW** on the control panel and process until ingredients come together to form a mass.
- 4 Once finished making the dough, stop the appliance by pressing the **START/STOP** button again or selecting the program twice. Wait for the blade to stop turning.





# NINJA

## CARE & MAINTENANCE

### CLEANING:

**▲ CAUTION: MAKE SURE THAT THE MOTOR BASE IS UNPLUGGED FROM THE POWER SOURCE BEFORE INSERTING OR REMOVING ANY ATTACHMENT AND BEFORE CLEANING.**

**▲ CAUTION: DO NOT IMMERSE THE MOTOR BASE INTO WATER OR ANY OTHER LIQUID.**

**▲ CAUTION: HANDLE BLADES CAREFULLY AS THE BLADES ARE VERY SHARP.**

- 1 Separate/remove all parts from each other.
- 2 Clean the motor base with a damp cloth and wipe dry.
- 3 Place the cups, lids, blade assemblies, and bowl in the top rack of the dishwasher.

**OR**

- 4 Carefully hand wash the cups, lids, blade assemblies, and bowl in warm, soapy water with a soft cloth.

**NOTE: If the appliance needs servicing, please call customer service at 0800 862 0453.**

### STORING:

- 1 Store the Nutri Ninja with Auto-iQ® Pro Compact System upright. Secure the power cord on the back of the base by wrapping the cord around the cord wrap. Do not place anything on top of the unit. Store the cups and the rest of the attachments where they will not be damaged and won't cause a hazard.

### RESETTING THE MOTOR THERMOSTAT:

The Nutri Ninja with Auto-iQ Pro Compact System features a safety system that prevents damage to the unit's motor and drive system should you inadvertently overload the appliance. If the appliance is overloaded, the motor will stop. To reset the appliance, follow the resetting procedure below:

- 1 Unplug the appliance from the electrical outlet.
- 2 Remove and empty the cup/pitcher/bowl and ensure that no food is jamming the cutting blades.
- 3 Allow the appliance to cool for approximately 30 minutes.
- 4 Re-install the cup/pitcher/bowl onto the motor base and re-plug the appliance into the electrical outlet.
- 5 Proceed with using the appliance as before while making sure not to exceed the maximum recommended capacities.

## TROUBLE-SHOOTING GUIDE

### **Unit doesn't turn on:**

- Make sure the unit is plugged in and the **START/STOP** button is pressed.
- Insert and rotate cup clockwise in the base until it clicks into place. Display should turn on.

### **Unit doesn't turn off:**

- Remove cup from base by rotating cup anticlockwise and lifting out. Display should turn off. Unplug the power cord from the outlet.

### **Lid/blade assembly hard to assemble:**

- Set the cup on a level surface. Place the lid or blade assembly on the top of the cup and align the threads so that the lid/blades sit flat on the cup. Twist clockwise so that the lid/blades evenly align to the cup until you have a tight seal.

### **Food is not evenly chopped:**

- For best results when chopping, make sure all ingredients are as dry as possible. Cut pieces down to even sizes, and reduce the amount of food in the cup. Use the Auto-iQ® CHOP button for best results.

### **Doesn't mix well, food gets stuck:**

- Using the Auto-iQ programs is the easiest way to achieve great results. The pulses and pauses allow the food to settle towards the blade. If food is routinely getting stuck adding some liquid will usually help.
- When packing the cups, start with fresh items, then add liquids, powders/dry ingredients, and finally frozen items or ice.

### **Unit moves on the counter while blending:**

- Make sure the surface as well as the feet of the unit are clean and dry.

### **Unit is difficult to remove from the counter for storage:**

- To release the motor base from the counter or tabletop, place your hands underneath both sides of the motor base and gently pull the unit up and towards you.





# NINJA®

Euro-Pro Europe Limited  
15 Mariner Court  
Calder Park  
Wakefield  
WF4 3FL  
Freephone 0800 862 0453  
[www.ninjakitchen.eu](http://www.ninjakitchen.eu)



BL490UK\_30\_IB\_150616\_1  
© 2015 Euro-Pro Operating LLC

Illustrations may differ from actual product. We are constantly striving to improve our products, therefore the specifications contained herein are subject to change without notice.

Printed in China



[www.ninjakitchen.eu](http://www.ninjakitchen.eu)



0800 862 0453