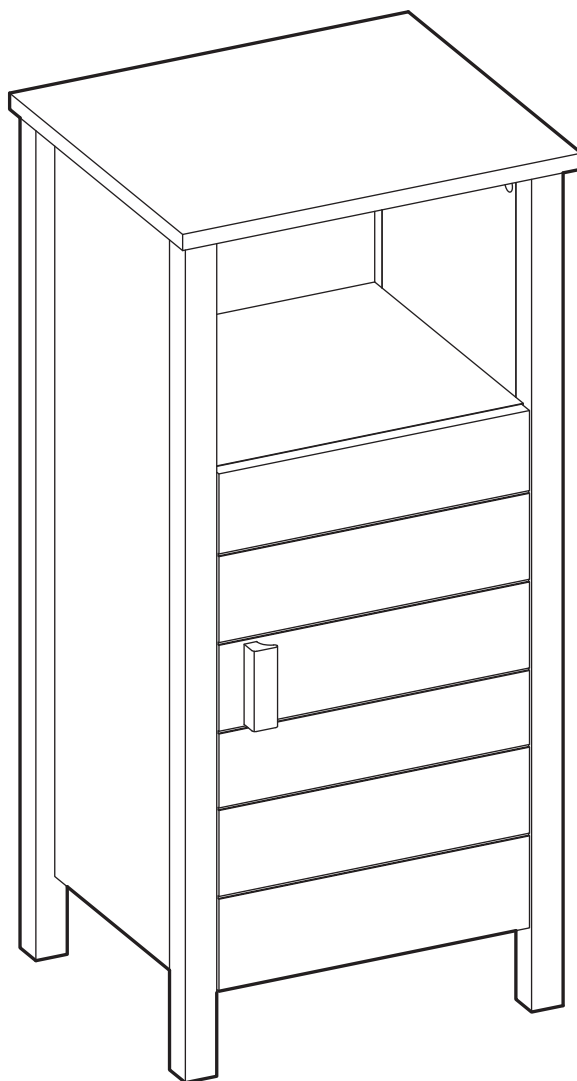


Somersham Oak Bathroom Sngl Cabinet

Assembly Instructions – Please keep for future reference

402/8875



Dimensions

Width - 38cm

Depth - 33cm

Height - 80cm

Important - Please read these instructions fully before starting assembly

If you need help or have damaged or missing parts, call the Customer Helpline: 03456 400800



Safety and care advice

Important - Please read these instructions fully before starting assembly

- Check you have all the components and tools listed on pages 2 and 3.
- Remove all fittings from the plastic bags and separate them into their groups.
- Keep children and animals away from the work area, small parts could choke if swallowed.
- Make sure you have enough space to layout the parts before starting.
- Do not stand or put weight on the panels, this could cause damage.
- Assemble the unit as close to its final position (in the same room) as possible.

- Assemble on a soft level surface to avoid damaging the unit or your floor.

• **Note:** Only apply the glue once you are sure of the assembly.

- The wall plugs supplied are suitable for solid walls only. It is important that the correct type of fixing is used for your wall, seek professional advice if in doubt.

- Parts of the assembly will be easier with 2 people.

- If using power tools, please follow the safety instructions supplied with the tools.



the unit. Only use hand screwdrivers.

- We do not recommend the use of power drill/ drivers for inserting screws, as this could damage the unit.
- **Warning:** Before drilling, check the wall for hidden pipes and cables.
- Dispose of all packaging carefully and responsibly.

Glue safety - Take care when using glue, please follow the advice below

Skin contact: Remove contamination by washing with soap and water. This procedure should also be followed prior to eating and drinking.

Eye contact: Rinse immediately with clean water for 15 minutes and seek medical advice.

If swallowed: Seek medical advice immediately. If possible show product information or label to the medical advisor.

Care and maintenance

- Only clean using a damp cloth and mild detergent, do not use bleach or abrasive cleaners.

- From time to time check that there are no loose screws on this unit.

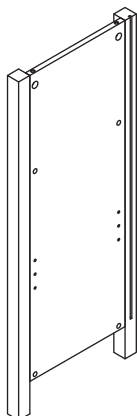
- This product should not be discarded with household waste. Take to your local authority waste disposal centre.

Note: if required the next page can be cut out and used as a reference throughout the assembly. Keep this page with these instructions for future reference.

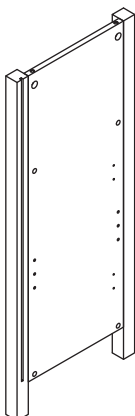
Components - Panels

If you have damaged or missing components,
call the Customer Helpline: 03456 400800

Please check you have all the panels listed below



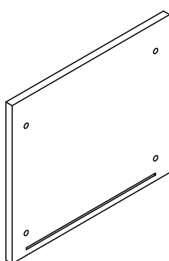
1 Left side panel



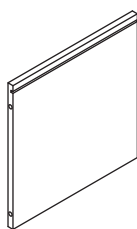
2 Right side panel



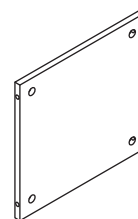
3 Back panel



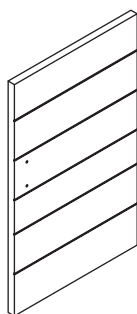
4 Top panel



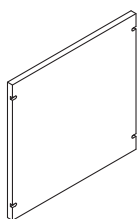
5 Bottom panel



6 Shelf



7 Door panel

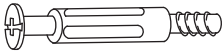

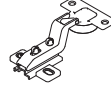

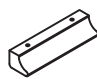
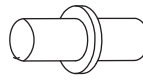
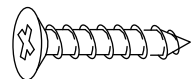




8 Adjustable shelf

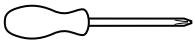
Components - Fittings

Please check you have all the fittings listed below

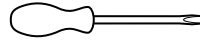
Note: The quantities below are the correct amount to complete the assembly. In some cases more fittings may be supplied than are required.

A  Locking Pin x 12	B  Locking Nut x 12	C  Curved hinge x 2
D  Φ4 x 12mm Screw x 8	E  Wooden handle x 1	F  Metal Support x 4
G  Φ4 x 30mm Screw x 2	H  Cam cap x 4	I  Screw cap x 2

Tools required

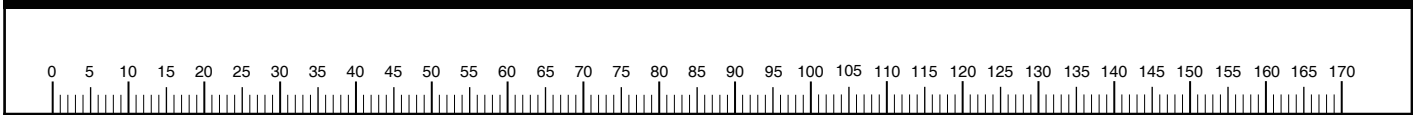


Phillips screwdriver
(medium & large)



Flatblade screwdriver
(medium)

Ruler - Use this ruler to help correctly identify the screws

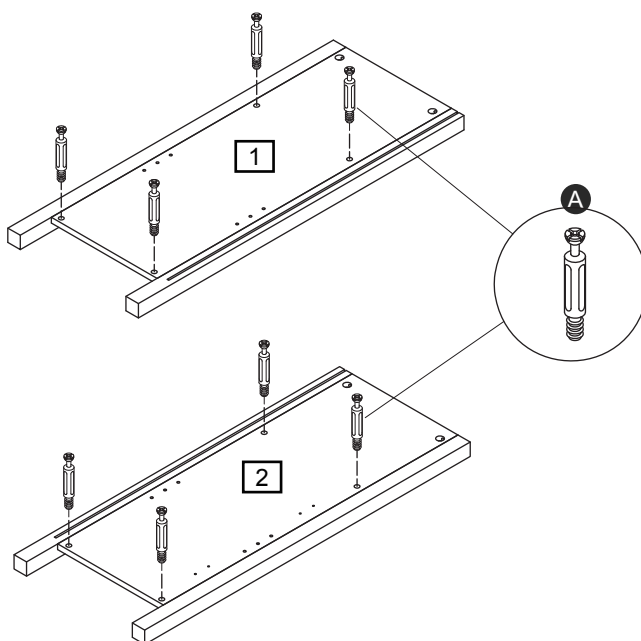
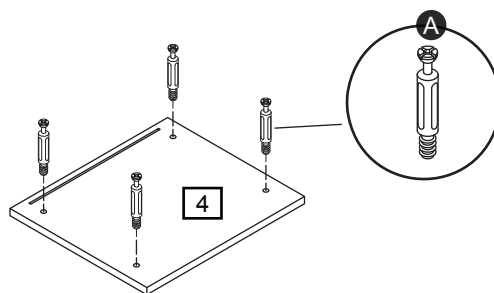


Assembly Instructions

Step 1

Fitting locking pin

Screw 12 x locking pin **A** into top panel **4**, left side panel **1** and right side panel **2**.



Step 2

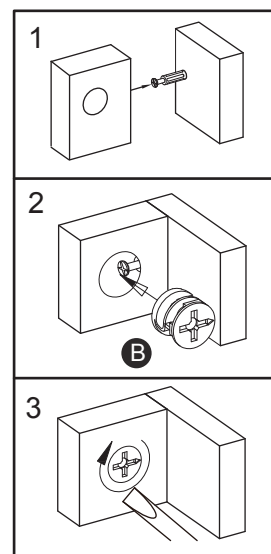
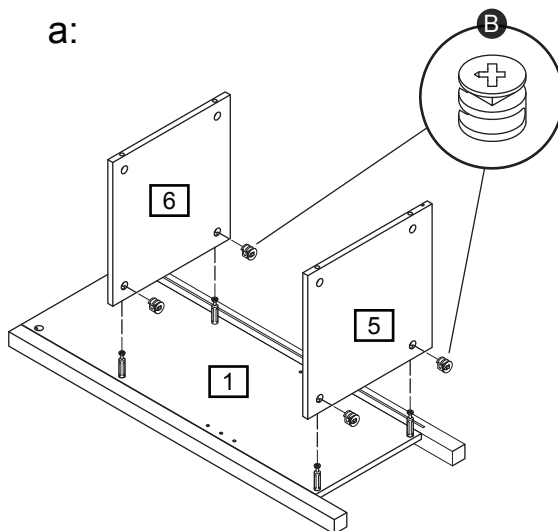
Assembling side panel

a:

Attach bottom panel **5** and shelf **6** to left side panel **1** as shown.

Insert locking nut **B** into bottom panel and shelf.

Use a screwdriver to turn the locking nut clockwise to lock.



Continued on next page.

Assembly Instructions

Step 2 - continued

Assembling under unit

NOTE: It would be useful to ask someone to help you at this stage.

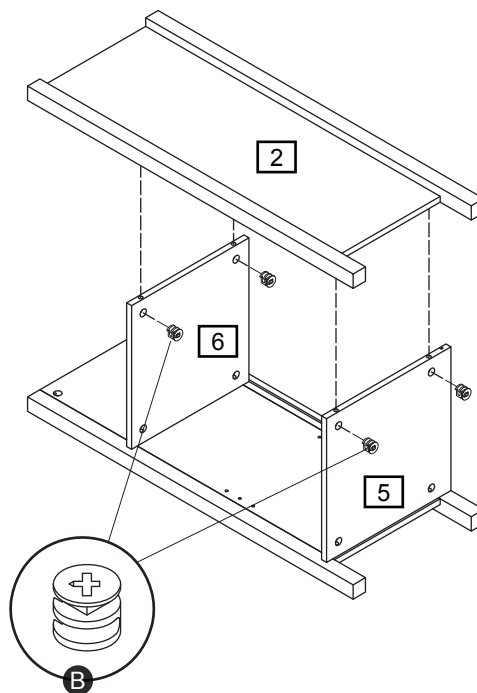
b:

Attach right side panel **2** onto the unit as shown.

Insert locking nut **B** into bottom panel **5** and shelf **6**.

Use a screwdriver to turn the locking nut clockwise to lock.

b:



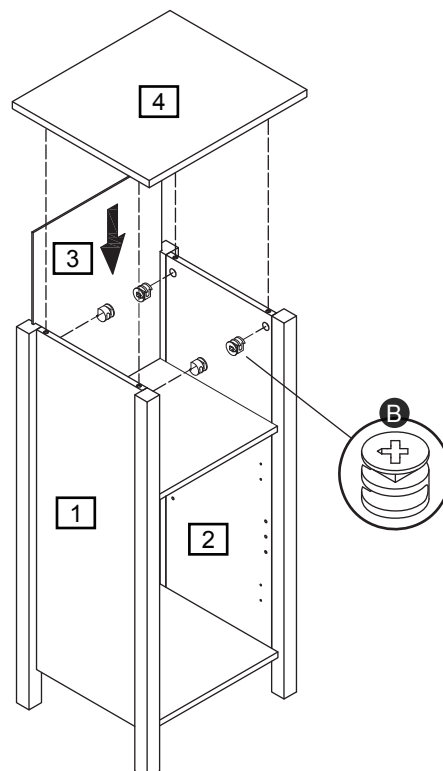
Step 3

Assembling back panel and top panel

Slide down back panel **3** along grooves in left side panel **1** and right side panel **2**.

Carefully place the top panel **4** onto the unit. Insert locking nut **B** into left side panel and right side panel.

Tighten the locking nut to secure the unit.



Assembly Instructions

Step 4

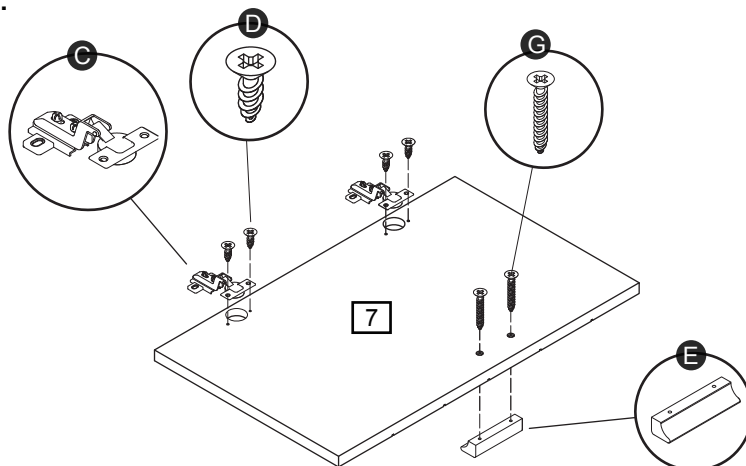
Assembling door panel

a:

Use 12mm screws **D** to fix curved hinges **C** onto door panel **7**.

Use 30mm screws **G** to fix handle **E** onto door.

a:



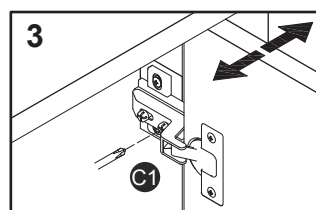
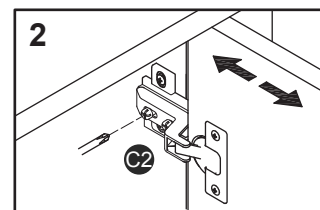
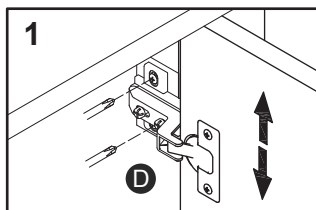
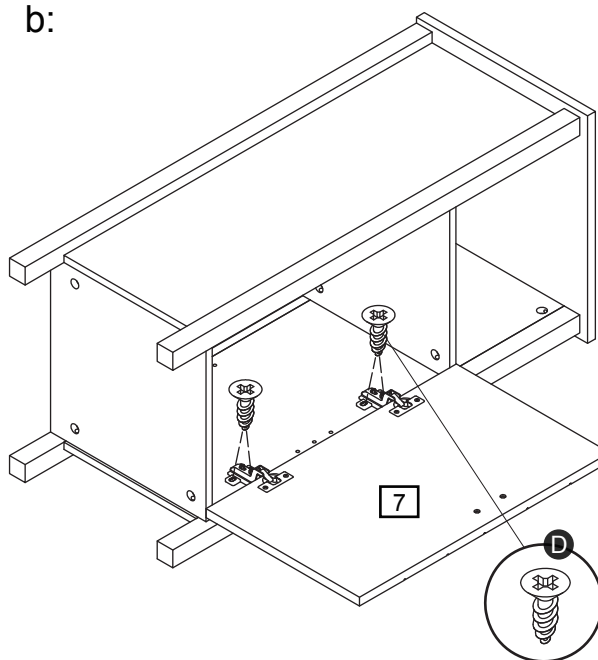
b:

b:

Carefully attach door panel **7** to the unit by fixing curved hinge onto right side with 12mm screws **D**.

Adjust the door up or down, left or right, in or out if needed as shown:

1. Loosen two screws **D** and adjust the door up or down, then fix screws **D** again.
2. Loosen screw **C2** and adjust the door in or out, then fix screw **C2** again (loose screw **C1** clockwise first help to adjust door in or out if needed).
3. Loosen screw **C1** and adjust the door left or right, then fix screw **C1** again.



Assembly Instructions

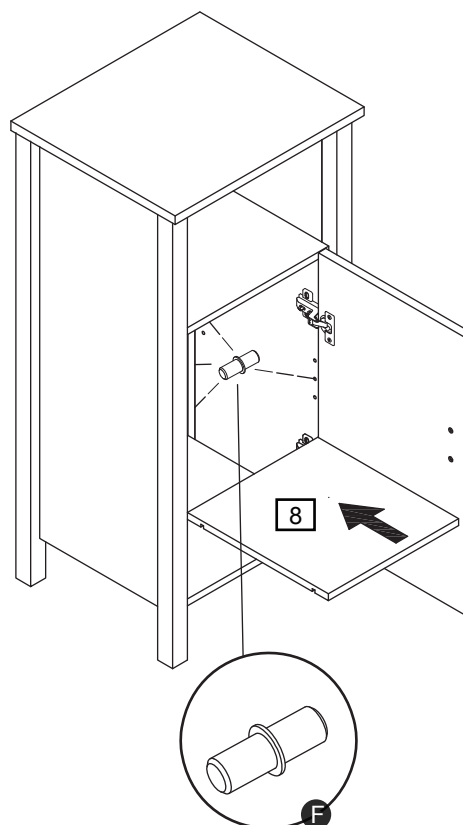
Step 5

Assembling adjustable panel

a:

Insert metal supports **F** into left side panel and right side panel. Carefully put the adjustable shelf **8** on it.

a:



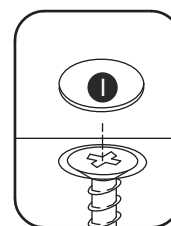
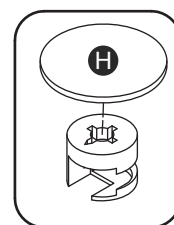
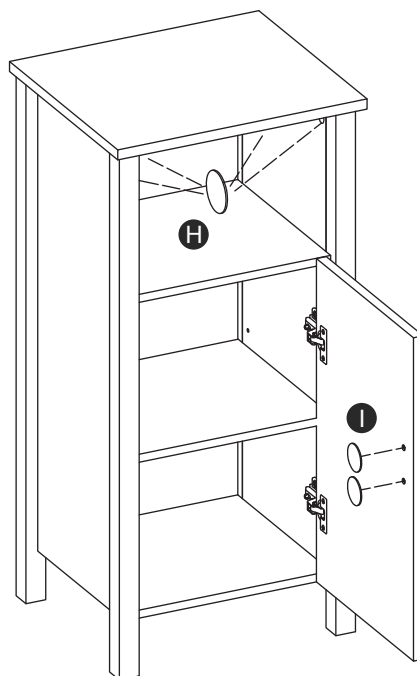
b:

b:

Use cam caps **H** to cover the visible cams as shown.

Use screw caps **I** to cover the visible screws as shown.

After above assembly, please double check and make sure all screws are firmly fixed before use.



NOTE: If you have damaged or missing components, call the Customer Helpline: 03456 400800
Argos LTD, 489-499 Avebury Boulevard,
Central Milton Keynes, MK9 2NW