

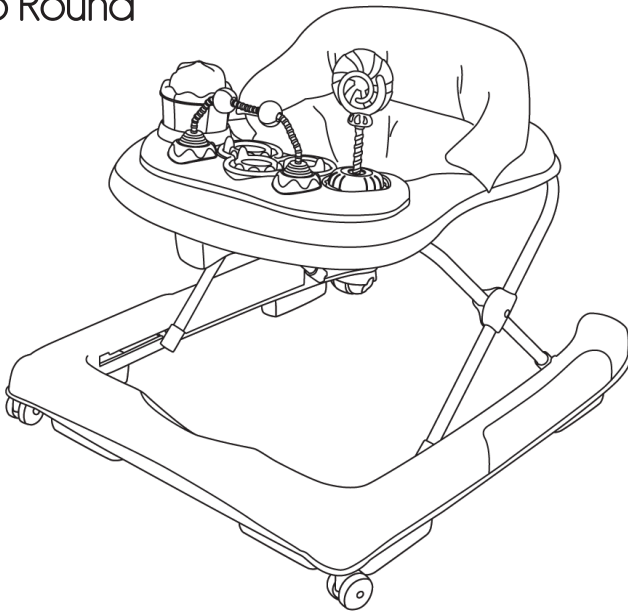
RedKite®

IMPORTANT!
KEEP FOR FUTURE REFERENCE.

Read the instructions carefully before use and keep them for future reference.
The child may be hurt if you do not follow the instructions.
Adult assembly required.

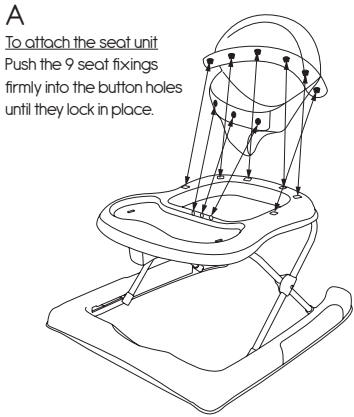
Instruction Leaflet

Baby Go Round Twirl

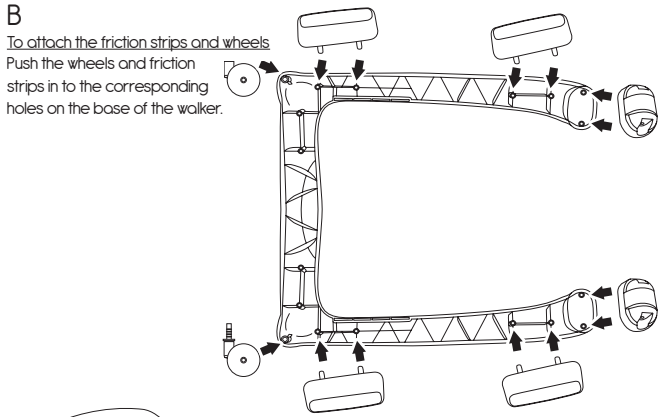


Intended to be used by children who can sit unaided, approximately from 6 months. It is not intended for children weighing more than 12kg.

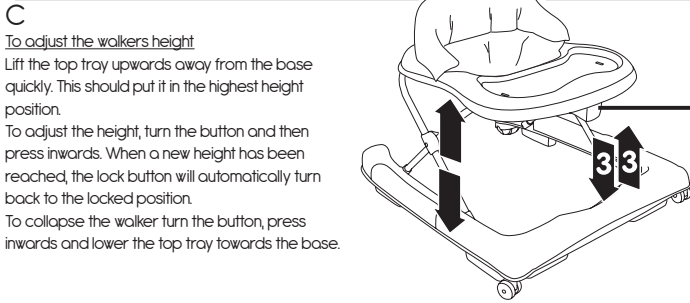
Complies with the relevant parts of: BS EN 1273 : 2005.
Customer Care Line: 01454 326 568.



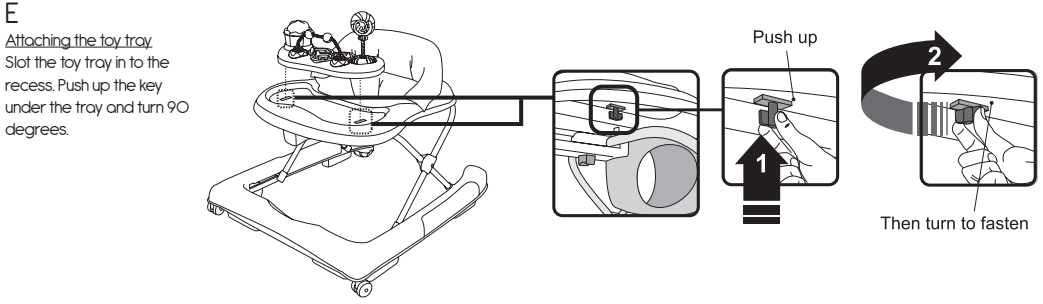
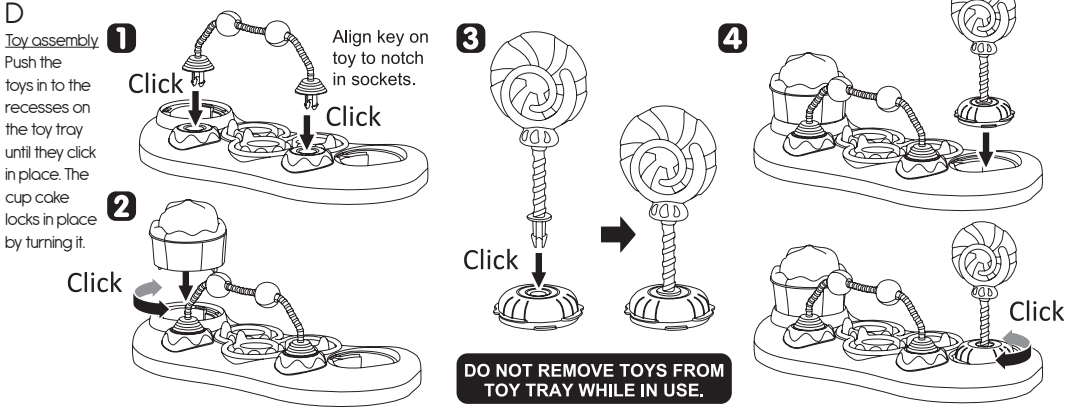
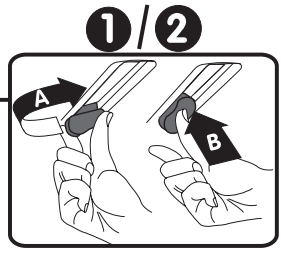
To attach the seat unit
Push the 9 seat fixings firmly into the button holes until they lock in place.



To attach the friction strips and wheels
Push the wheels and friction strips in to the corresponding holes on the base of the walker.



To adjust the walker's height
Lift the top tray upwards away from the base quickly. This should put it in the highest height position.
To adjust the height, turn the button and then press inwards. When a new height has been reached, the lock button will automatically turn back to the locked position.
To collapse the walker turn the button, press inwards and lower the top tray towards the base.



Attaching the toy tray
Slot the toy tray in to the recess. Push up the key under the tray and turn 90 degrees.

General Care:

- The correct use and maintenance of this walker is essential.
- Ensure that both of the child's feet reach the floor.
- Do not use excessive force when adjusting the walker.
- Always store the walker in a dry place.
- Individual toys on the toy tray are not replaceable.
- Do not alter the toy tray by adding toys or cutting existing ones away, this could be dangerous.

Cleaning:

- The seat unit may be spot cleaned by using a sponge with a mild soap and warm water solution. Leave to dry in a ventilated area away from direct sunlight. Do not dry clean, machine wash, bleach or tumble dry.
- Metal parts may be cleaned with a damp cloth. Always wipe dry.
- Clean plastic parts with a mild soap and warm water solution.
- Avoid leaving the walker in direct sunlight for prolonged periods of time as this may cause fabrics to fade.

Maintenance:

- Check that nothing is loose or broken and that no sharp edges have been exposed. Replace any damaged parts immediately.
- Routinely inspect all studs, nuts and screws for tightness. Check the seat attachment points, ensure they are secured.
- Never use this product without the friction blocks.
- Do not use replacement parts other than those approved by the manufacturer or distributor. Failure to do this may invalidate your warranty.

Safety Warnings:

- WARNING – Never leave the child unattended.
- WARNING – The child will be able to reach further and move rapidly when in the baby walking frame.
- WARNING – Your child's safety is your responsibility.
- Prevent access to stairs, steps and uneven surfaces.
- Guard all fires, heating and cooking appliances.
- Remove hot liquids, electrical flexes and other hazards from reach.
- Prevent collisions with glass in doors, windows and furniture.
- Do not use the baby walking frame if any components are broken or missing.
- This baby walking frame should be used only for short periods of time (e.g. 20 min).

This product complies with: BS EN 1273 : 2005

Imported by
The Red Kite Baby Co Ltd
35 Lavenham Road
Beeches Industrial Estate
Yate
Bristol
BS37 5QX

RedKite®

