



# TASSIMO

CADDY



## TAS 75xx

de Gebrauchsanleitung

en Instruction manual

fr Mode d'emploi

es Instrucciones de uso

pt Instruções de serviço

it Istruzioni per l'uso

nl Gebruiksaanwijzing

sv Bruksanvisning

da Brugsanvisning

no Bruksanvisning

el Οδηγίες χρήσης

pl Instrukcja obsługi

cs Návod k použití

sk Návod na použitie

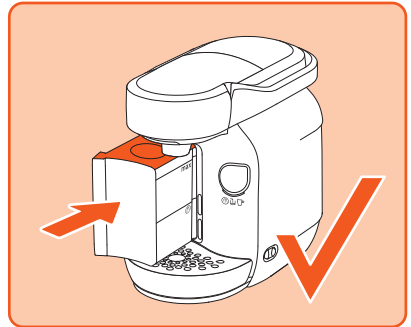
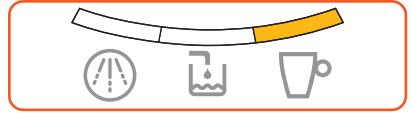
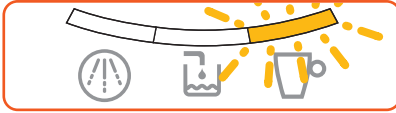
ro Instrucțiuni de utilizare

ru Правила пользования

uk Інструкція з експлуатації



# BOSCH





**de** Integrierter Kapselhalter  
**en** Integrated capsule holder  
**fr** Porte-capsules intégré  
**es** Dispensador de cápsulas integrado  
**pt** Suporte para cápsulas integrado  
**it** Portacapsule integrato  
**nl** Geïntegreerde capsulehouder  
**sv** Inbyggd kapselhållare

**da** Integreret kapselholder  
**no** Integrert kapselholder  
**el** Ενσωματωμένη βάση καψουλών  
**pl** Zintegrowany uchwył na kapsułki  
**cs** Integrovaný držák kapslí  
**sk** Integrovaný držiak na kapsule  
**ro** Suport pentru capsule integrat  
**ru** Встроенный держатель капсул  
**uk** Інтегрований тримач для капсул



**de** Inbetriebnahme  
**en** First time use  
**fr** La première utilisation  
**es** Puesta en servicio  
**pt** Primeira utilização  
**it** Messa in funzione  
**nl** Ingebruikneming  
**sv** Idrifttagning  
**da** Ibrugtagning

**no** Første gangs bruk  
**el** Θέση σε λειτουργία  
**pl** Uruchamianie  
**cs** Uvedení do provozu  
**sk** Uvedenie do prevádzky  
**ro** Prima utilizare  
**ru** Ввод в эксплуатацию  
**uk** Перше використання



**de** Wasserfiltersystem  
**en** Water filtration system  
**fr** Système de filtration d'eau  
**es** Sistema de filtrado de agua  
**pt** Sistema de filtragem de água  
**it** Sistema di filtraggio acqua  
**nl** Waterfiltersysteem  
**sv** Vattenfiltersystem  
**da** Vandfiltersystem

**no** Vannfiltreringssystem  
**el** Σύστημα φίλτρου νερού  
**pl** System filtracji wody  
**cs** Systém filtrování vody  
**sk** Systém filtrovania vody  
**ro** Sistemul de filtrare a apei  
**ru** Система фильтрации воды  
**uk** Система фільтрації води



**de** Getränkezubereitung  
**en** Beverage preparation  
**fr** Préparation de boissons  
**es** Preparación de bebidas  
**pt** Preparação de bebidas  
**it** Preparazione delle bevande  
**nl** Toebereiden van dranken  
**sv** Tillredning av drycker  
**da** Tilberedelse af drikke

**no** Tilberedning av drikker  
**el** Παρασκευή ροφήματος  
**pl** Przygotowanie napoju  
**cs** Příprava nápojů  
**sk** Príprava nápojov  
**ro** Prepararea băutilor  
**ru** Приготовление напитков  
**uk** Приготування напою



**de** Entkalken  
**en** Descaling  
**fr** Détartrage  
**es** Descalcificar  
**pt** Descalcificar  
**it** Decalcificare  
**nl** Ontkalken  
**sv** Avkalkning  
**da** Afkalkning

**no** Avkalking  
**el** Αποσβέστωση  
**pl** Odkamienianie  
**cs** Odstranění vodního kamene  
**sk** Odstránenie vodného kameňa  
**ro** Decalcifierea  
**ru** Удаление накипи  
**uk** Видалення накипу



**de** Reinigen  
**en** Cleaning  
**fr** Nettoyage  
**es** Limpiar  
**pt** Limpar  
**it** Pulizia  
**nl** Reinigen  
**sv** Rengöring  
**da** Rengøring

**no** Rengjøring  
**el** Καθαρισμός  
**pl** Czyszczenie  
**cs** Čistění  
**sk** Čistenie  
**ro** Curățarea  
**ru** Очистка  
**uk** Очищення



**de** Stromschlaggefahr!  
**en** Risk of electric shock!  
**fr** Risque de choc électrique!  
**es** ¡Peligro de electrocución!  
**pt** Perigo de choque eléctrico!  
**it** Pericolo di scossa elettrica!  
**nl** Gevaar van elektrische schok!  
**sv** Risk för elektrisk stöt!  
**da** Fare for elektrisk støt!  
**no** Fare for elektrisk støt!  
**el** Κίνδυνος ηλεκτροπληξίας!

**pl** Niebezpieczeństwo porażenia prądem!  
**cs** Nebezpečí úrazu elektrickým proudem!  
**sk** Nebezpečenstvo zasiahnutia elektrickým prúdom!  
**ro** Pericol de electrocutare!  
**ru** Опасность поражения током!  
**uk** небезпека ураження електричним струмом!

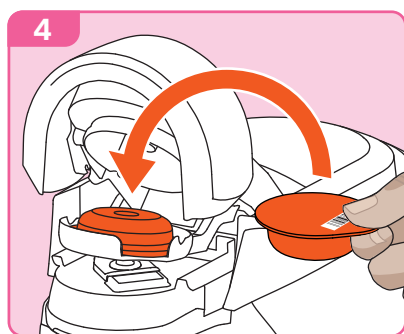
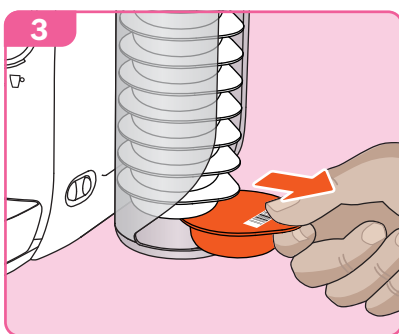
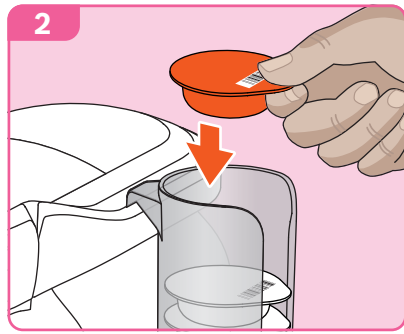
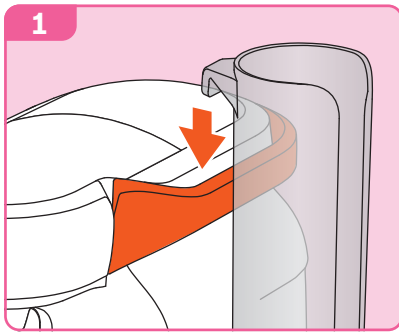
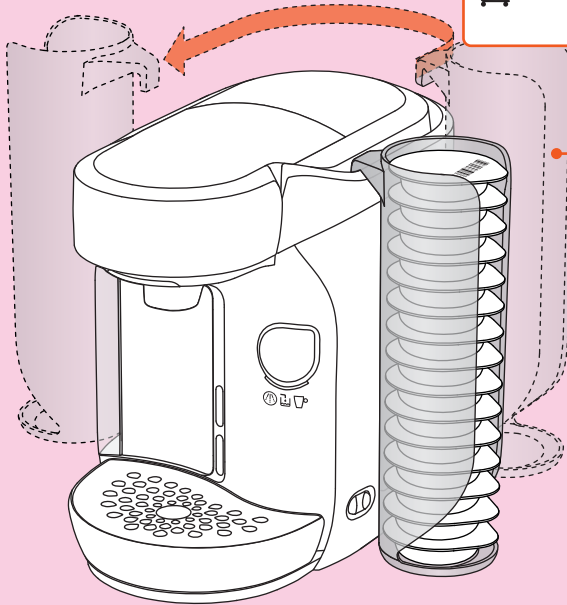


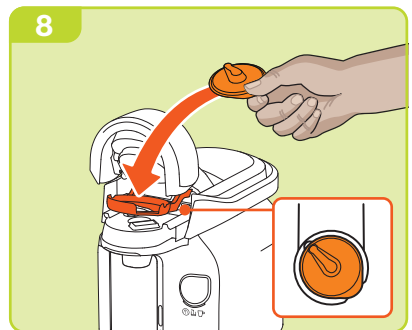
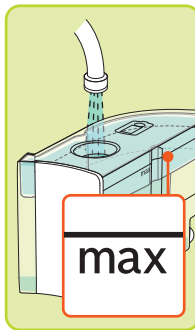
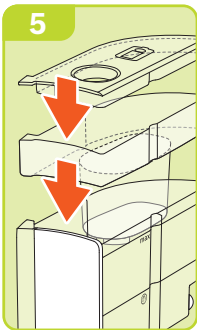
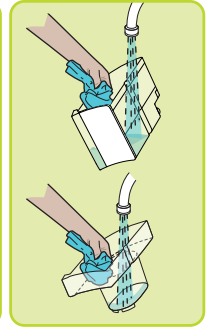
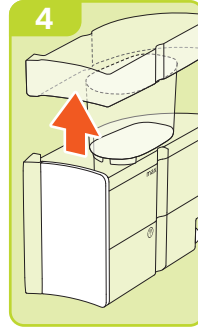
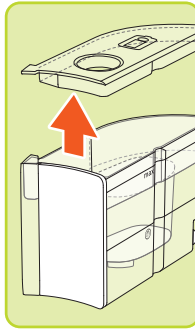
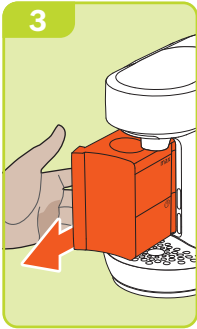
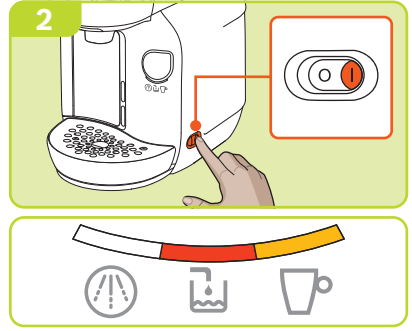
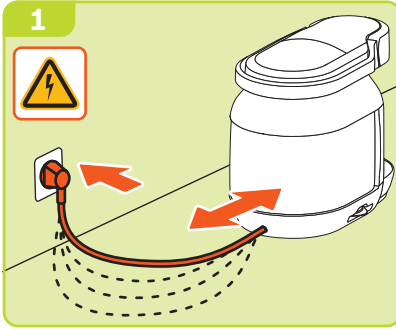
**de** Verbrennungsgefahr!  
**en** Risk of burns!  
**fr** Risque de brûlure!  
**es** ¡Peligro de quemaduras!  
**pt** Perigo de queimadura!  
**it** Pericolo di ustioni!  
**nl** Verbrandingsgevaar!  
**sv** Brännskaderisk!  
**da** Fare for forbrænding!

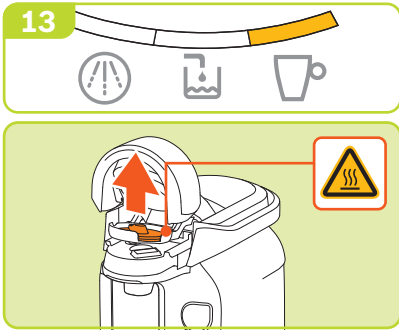
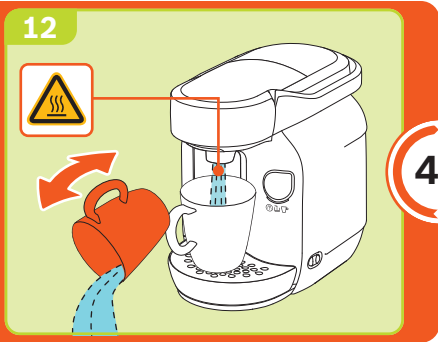
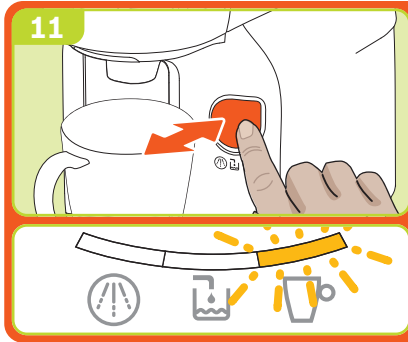
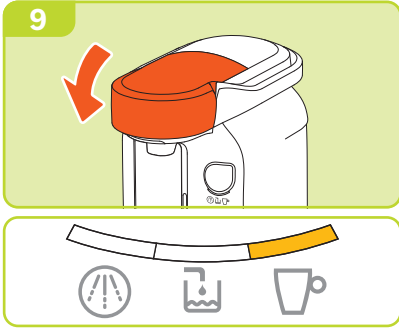
**no** Fare for forbrenning!  
**el** Κίνδυνος εγκαυμάτων!  
**pl** Niebezpieczeństwo poparzenia!  
**cs** Nebezpečí opraření!  
**sk** Nebezpečenstvo oparenia!  
**ro** Pericol de arsuri!  
**ru** Риск получения ожогов!  
**uk** небезпека опшарення!

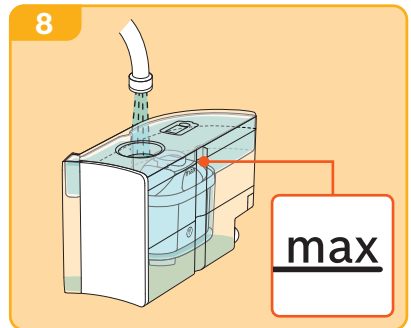
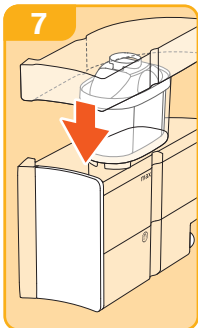
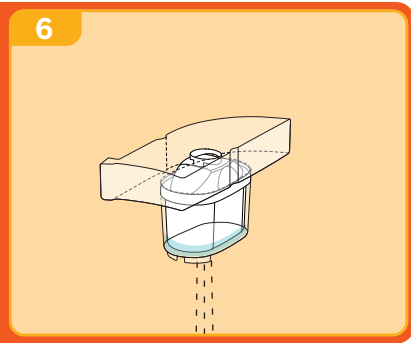
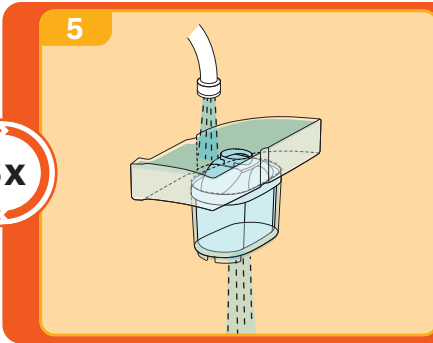
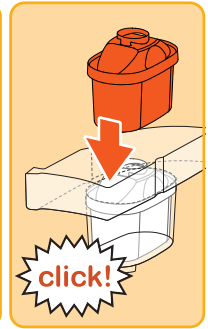
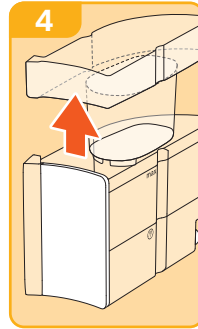
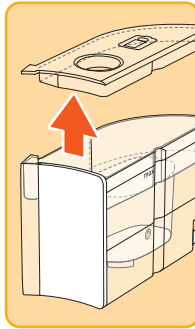
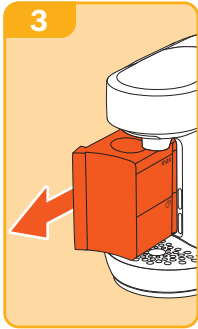
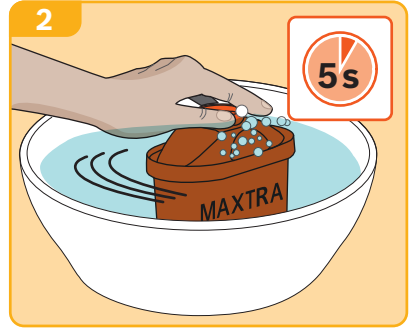
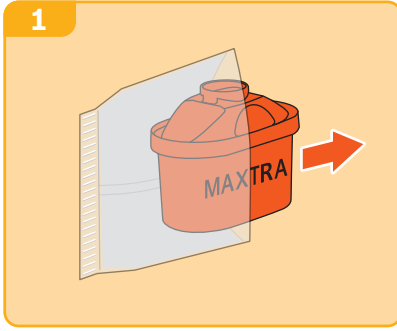


 [bosch-home.com](http://bosch-home.com)  
[tassimo.com](http://tassimo.com)  
№ TCZ7000

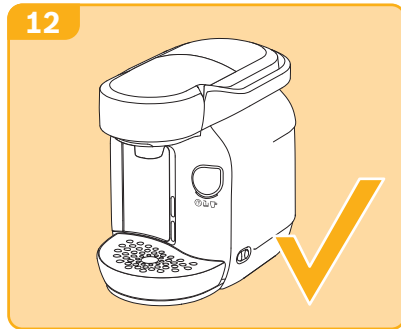
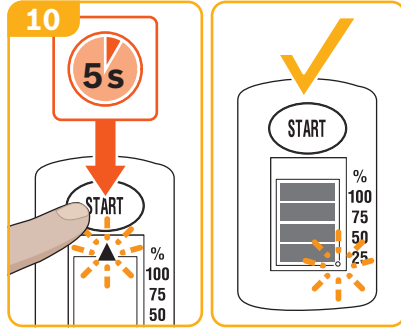
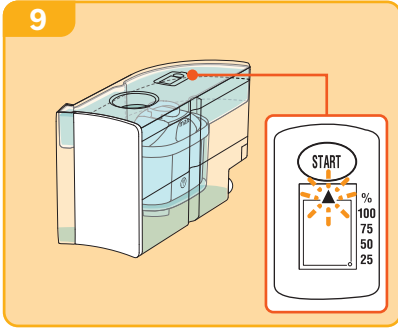








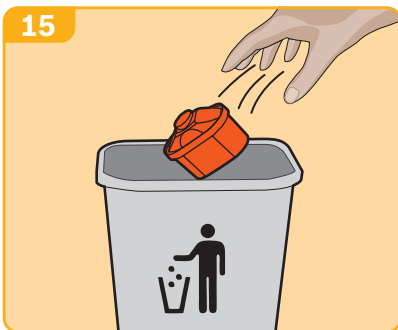
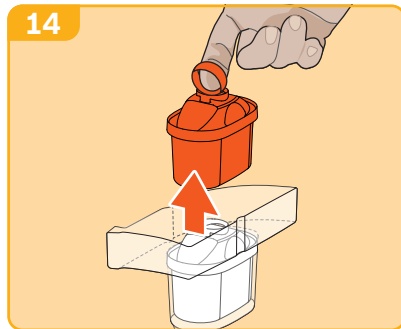


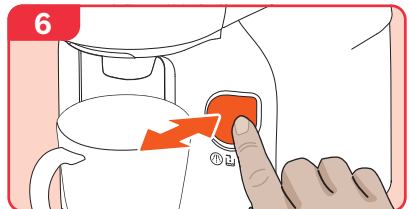
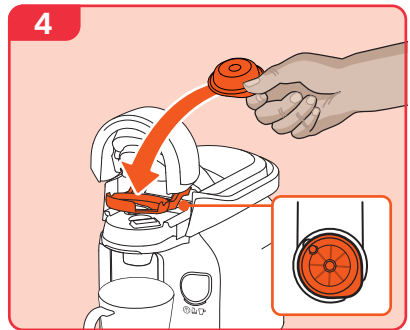
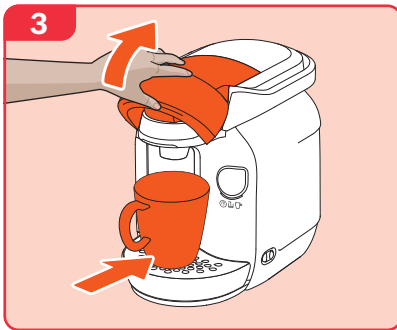
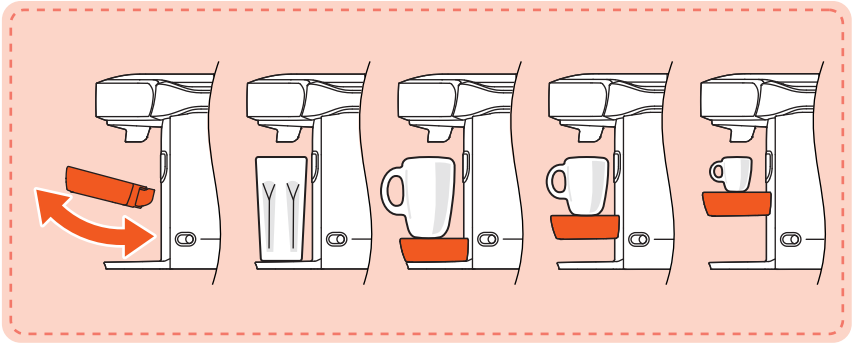
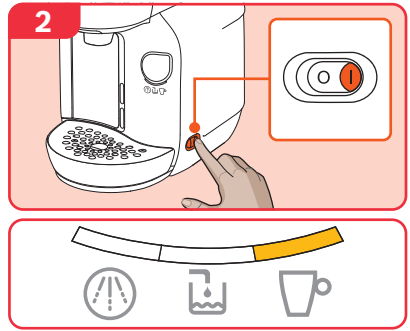
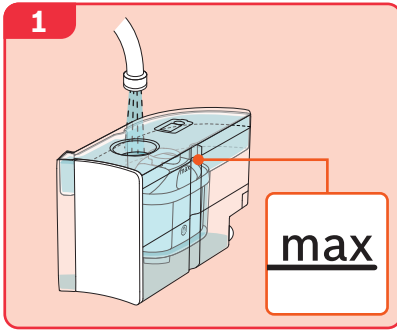


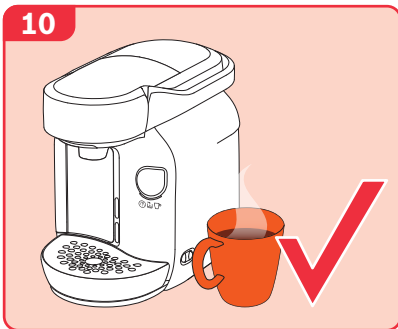
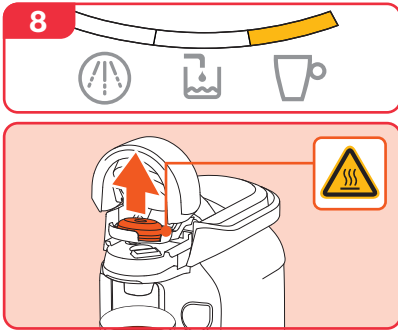
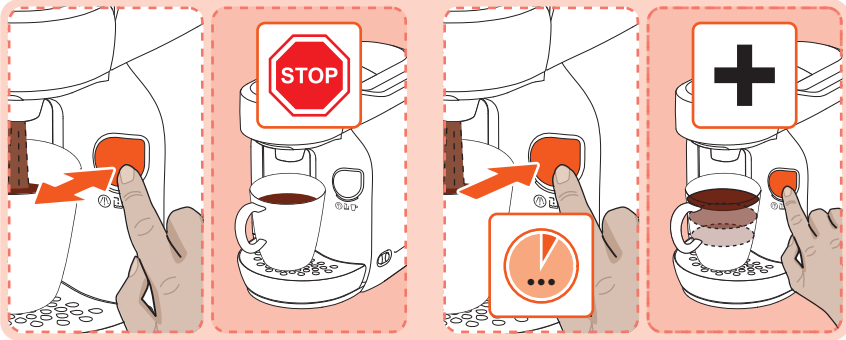
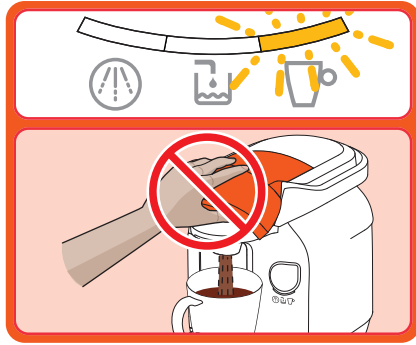
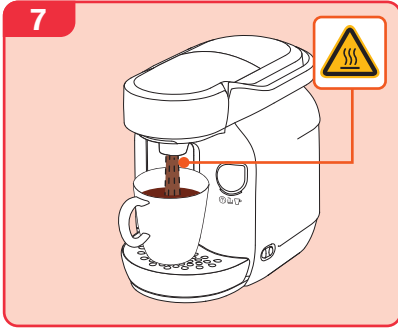
13

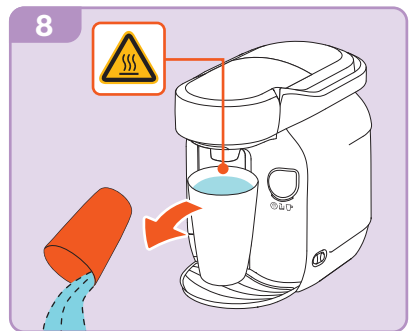
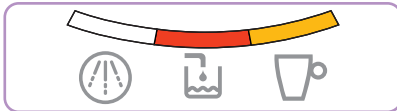
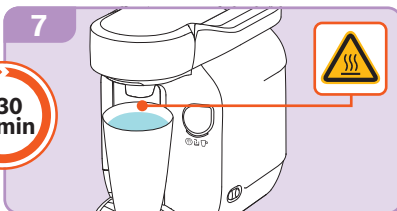
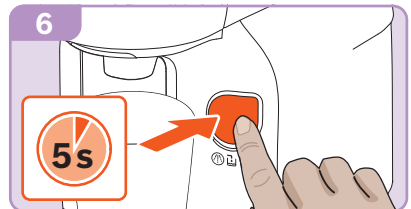
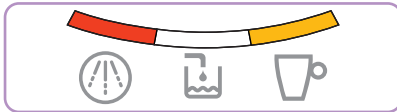
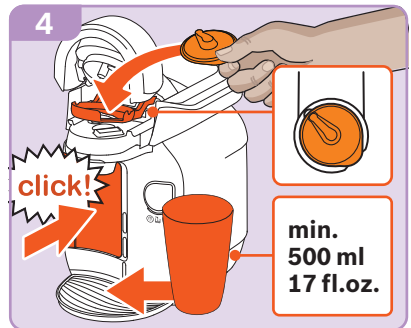
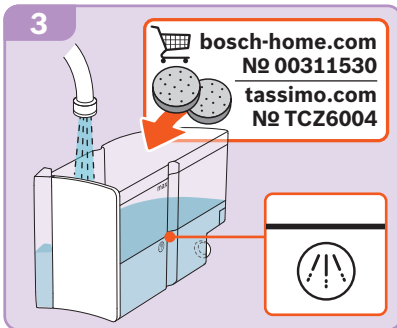
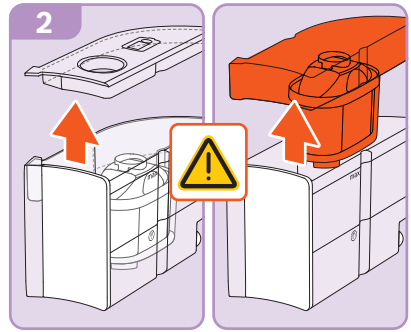
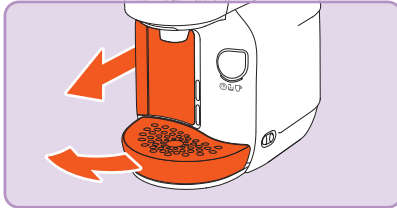
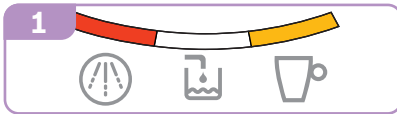
**8**

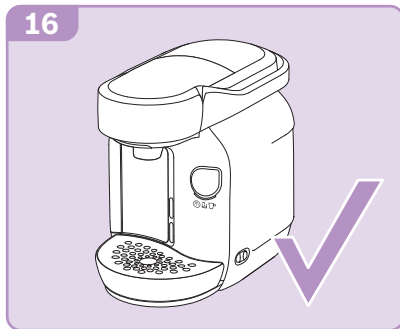
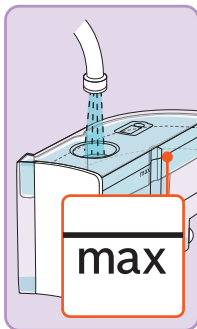
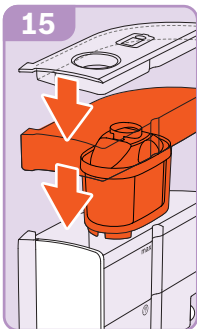
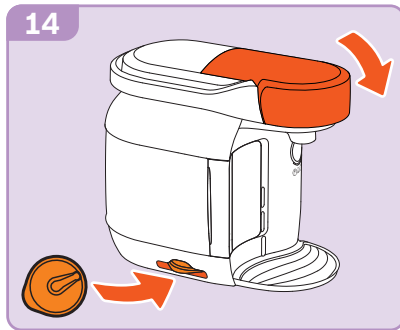
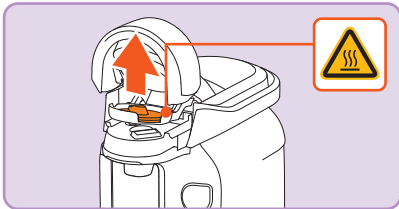
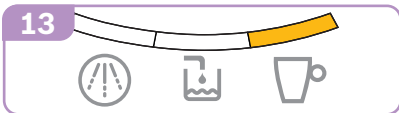
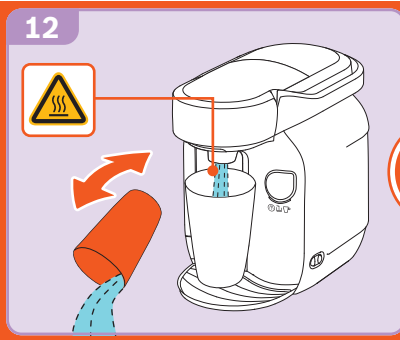
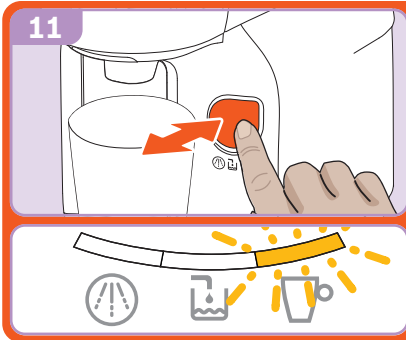
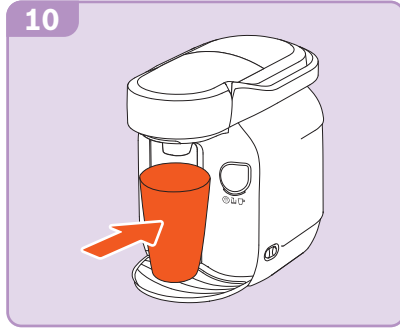
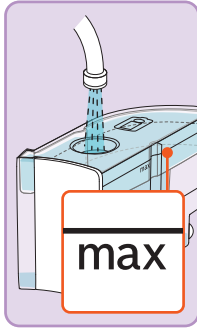
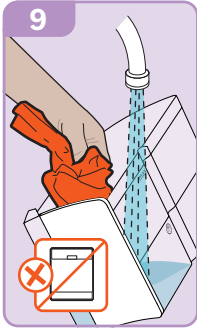
Wochen	Εβδομάδες
Weeks	Hafta
Semaines	Tygodni
Semanas	Недель
Semanas	Тижнів
Settimane	Седмици
Veckor	Týdňu
Uger	Týždňov
Uker	Säptämäni
Viikko	ჟ
Weken	Антанар

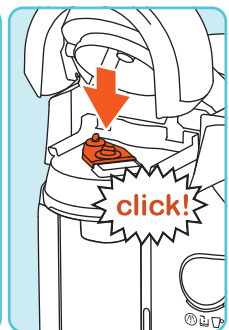
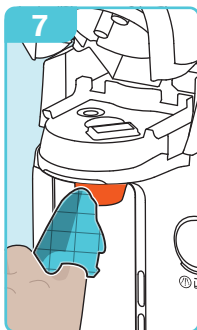
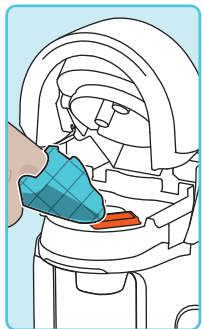
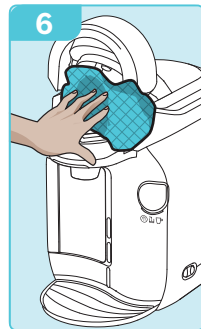
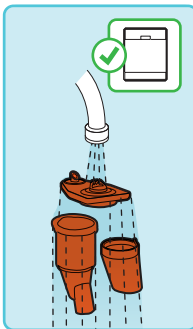
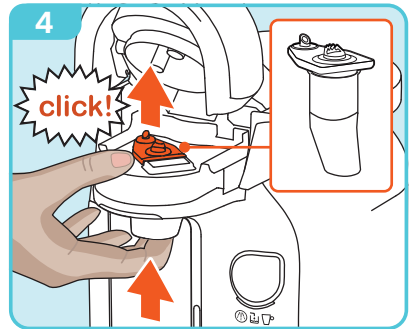
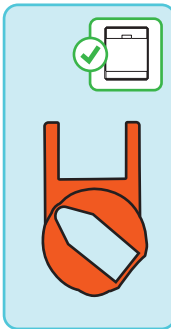
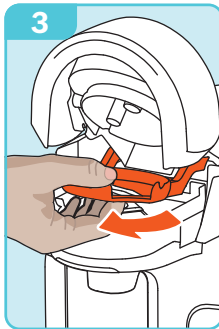
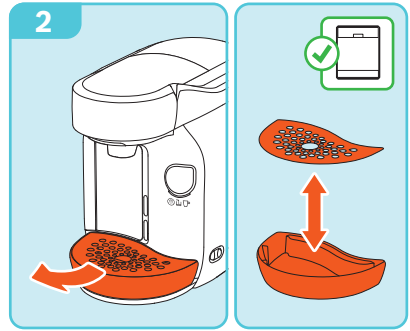
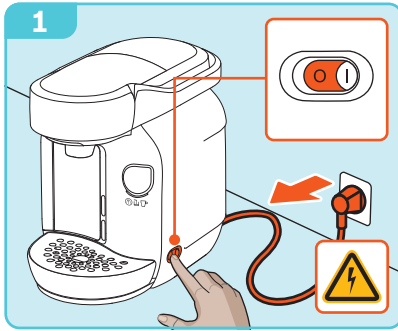


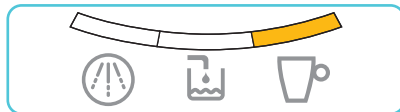
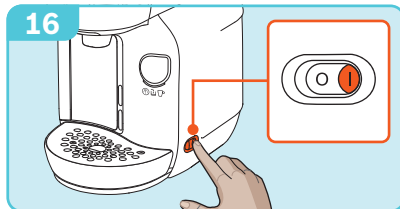
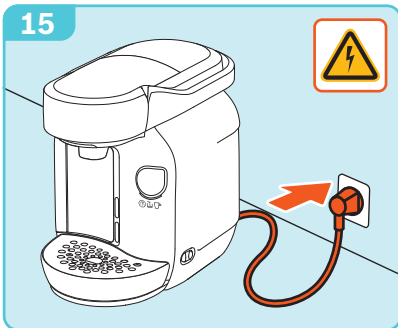
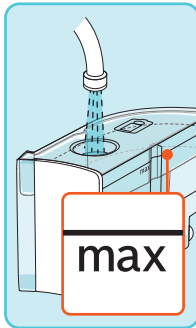
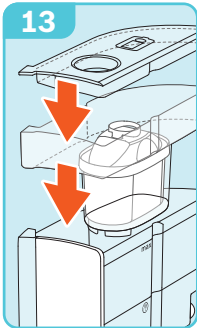
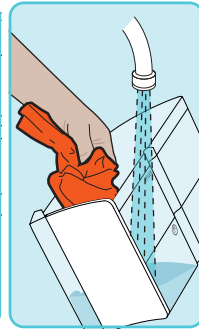
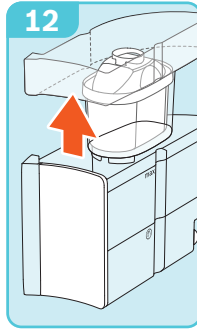
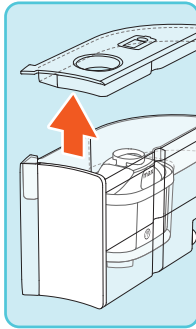
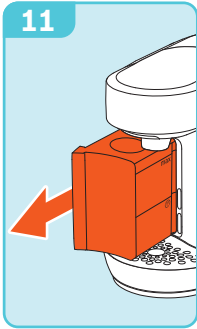
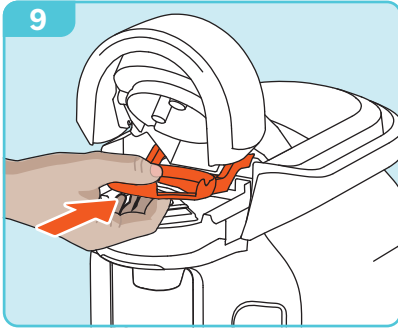


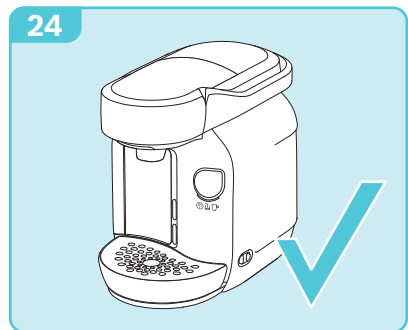
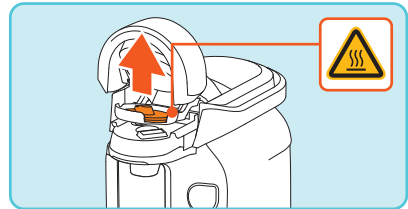
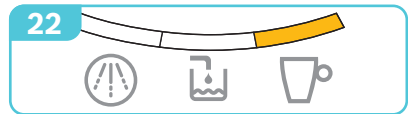
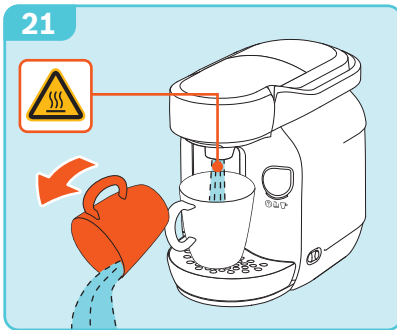
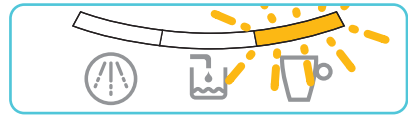
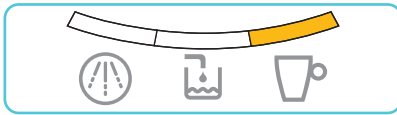
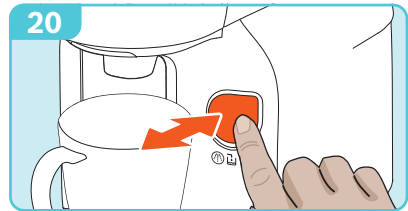
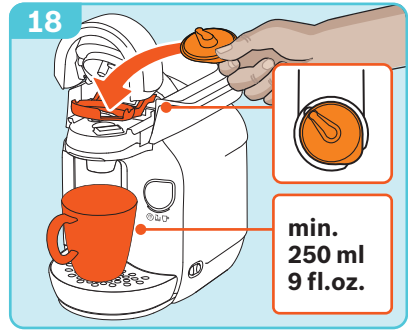
















- de** Beachten Sie unbedingt die Sicherheitshinweise in der beiliegenden Gebrauchsanleitung – Teil 1! Dort finden Sie auch detaillierte Informationen zum Gebrauch, Garantiehinweise und Kontaktadressen.
- en** Always follow the safety instructions in the included manual part 1! You will also find detailed information regarding Care and Use, Warranty and Contact information for Customer Service.
- fr** Suivez toujours les consignes de sécurité fournies dans la partie 1 de ce manuel. Vous trouverez également des informations sur l'entretien, l'utilisation, les conditions de garantie et les coordonnées du service client.
- es** Lea atentamente estas instrucciones de uso y la información adjunta antes de utilizar la máquina. También encontrará información detallada referente al uso, garantía y direcciones de contacto.
- pt** Respeite impreterivelmente os avisos de segurança que se encontram na parte 1 das instruções de serviço fornecidas! Encontrará também informações detalhadas a respeito da utilização, garantia e informações de contacto.
- it** Seguire sempre le avvertenze di sicurezza nelle istruzioni per l'uso allegate – Parte 1! È inoltre possibile trovare informazioni dettagliate sull'uso, informazioni sulla garanzia e indirizzi di contatto.
- nl** Neem altijd de veiligheidsaankwijzingen uit deel 1 van de meegeleverde gebruiksaanwijzing in acht! In deze gebruiksaanwijzing vindt u tevens gedetailleerde informatie over het gebruik en de garantie, evenals contactadressen.
- sv** Beakta säkerhetsanvisningarna i del 1 i den bifogade bruksanvisningen. Där hittar du också detaljerade informationer om användningen, garantin och kontaktadresser.
- da** Følg under alle omstændigheder sikkerhedsanvisningerne i den vedlagte brugsanvisning – del 1! Her finder du også detaljer om brug, garantioplysninger og kontaktadresser.
- no** Følg alltid instruksjonene i den vedlagte bruksanvisningen – del 1! Der finner du også detaljert informasjon om bruk, garantivilkår og kontaktadresser.
- el** Προσέξτε οπωσδήποτε τις υποδείξεις ασφαλείας στις συνημμένες οδηγίες χρήσης – μέρος 1! Εκεί θα βρείτε επίσης λεπτομερείς πληροφορίες για τη χρήση, υποδείξεις εγγύησης και διευθύνσεις επικοινωνίας.
- pl** Należy koniecznie przestrzegać instrukcji bezpieczeństwa w dołączonej instrukcji obsługi – część 1! Można znaleźć tam również szczegółowe informacje na temat użytkowania urządzenia, gwarancji oraz adresy kontaktowe.
- cs** Vždy dbejte bezpečnostních pokynů uvedených v přiloženém návodu k použití – část 1! Zde najdete také podrobné informace týkající se použití, záruční podmínky a kontaktní adresy.
- sk** Venujte bezpodmienečne pozornosť bezpečnostným pokynom uvedeným v priloženom návode na použitie – časť 1! Tu nájdete aj podrobné informácie o používaní, záručné podmienky a kontaktné adresy.
- ro** Vă rugăm să respectați obligatoriu instrucțiunile de siguranță prezentate în instrucțiunile de utilizare atașate - partea 1! Acolo găsiți informații detaliate cu privire la utilizare, indicații referitoare la garanție și date de contact.
- ru** Обязательно соблюдайте указания по технике безопасности, которые приведены в части 1 инструкции по эксплуатации! В инструкции Вы найдете подробную информацию об использовании и гарантии, а также контактные данные.
- uk** Обов'язково дотримуйтеся вказівок з техніки безпеки в доданій інструкції з експлуатації – частина 1! Там міститься також детальна інформація щодо використання, вказівки про гарантію та контактні адреси.

**Robert Bosch Hausgeräte GmbH**  
**Carl-Wery-Straße 34**  
**81739 München, GERMANY**  
**[www.bosch-home.com](http://www.bosch-home.com)**

8001 013 812 – 06/15