



ATGAMES

AtGames Digital Media, Inc.
All rights reserved.
Made in China.

Game Software© SEGA. All rights reserved. SEGA,
the SEGA logo and MEGA DRIVE are either registered
trademarks or trademarks of SEGA Corporation.



Imported by ARGOS LIMITED

489-499 Averbury Boulevard, Saxon Gate West,
Central Milton Keynes, MK9 2NW United Kingdom.
ITEM NO: 3907526



INSTRUCTION MANUAL



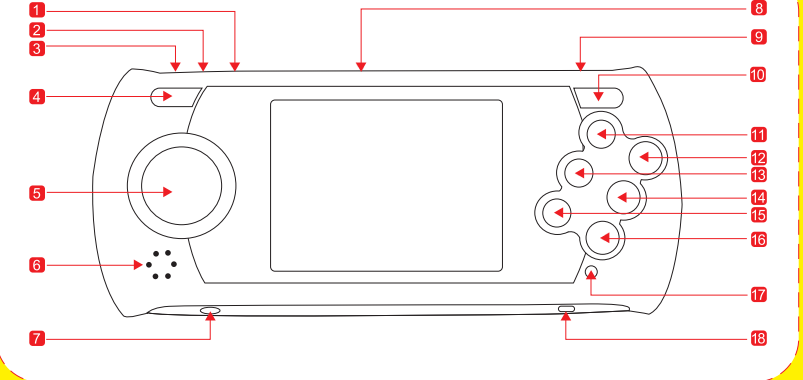
ARCADE ULTIMATE PORTABLE

BUILT-IN 20 16-BIT SEGA GAMES

ITEM NO: GP2628

Game Player Appearance and Key List

The image below shows the location of the Output Jacks and Keys, as well as the function of each Jack and Key. (The illustration is for reference only.)



● ● ● 1 ● ● ●

1 AV Out
Audio/Video output

2 Mini USB port
Mini USB port for charging

3 Charger Indicator
It is red light during charging,
and shows yellow light when
it is fully charged.

4 Menu
Player's operation menu

5 Directional Pad (D-Pad)
Directional Pad for game
playing

6 Speaker
The audio speaker

7 Earphone Jack
Earphone input

8 SD Card Slot
SD Card slot

9 Volume Control Switch
Rotate dial to the up/down to
increase/decrease volume

10 START/PAUSE
Push to start the game and
push again to pause

11 Z Key
Game Key Z

12 C Key
Game Key C

13 Y Key
Game Key Y

14 B Key
Game Key B

15 X Key
Game Key X

16 A Key
Game Key A

17 Low Battery Indicator
When it is lit, charge your battery
promptly to avoid a sudden shut down.

18 Power On/Off
Power on/off the player

● ● ● 2 ● ● ●

How do you play the game?

- Slide the "ON/OFF" key to "ON" to turn on the game player.
- Slide the "ON/OFF" key to "OFF" to turn off the game player.
- Press "Up" or "Down" on the D-Pad to select one of your favorite games, then press the "START/PAUSE" or "A" key to enter the selected game.
- Press the "START/PAUSE" key to start the game.



How do you switch back to game menu quickly while playing the game?

- Press "MENU" key, and the screen will go back to the game menu page.



How to play on TV?

- Connect the game player to TV by using AV cable (not included). Configure the TV input source to AV "in", then press the "MENU" key to display game menu on TV. The player will detect the presence of a TV and display the game video on TV screen automatically when you press "MENU".

How to play the games on your SD card?

- Turn off the game player.
- Insert the SD card into the SD slot.
- Turn on the game player.
- Select "SD CARD" on the last page of menu, press start. You will then enter a menu page of the games in the SD card.
- Select a game and press "START/PAUSE".

● ● ● 3 ● ● ●

How to add games to SD?

- Insert SD card to PC.
- Create a folder with the name of "Game" (if the SD doesn't have a "Game" folder already.)
- Place games in the "Game" folder.

NOTE: Please do not insert/remove the SD card while the power is turned on. It may damage the game player. File names must be ended with "bin"

How to charge your player?

- Connect the player to your computer using the USB cable (included) or a USB charger.
- You may also use a USB switching power adaptor to connect with the USB charging cable and the household AC outlet to charge the player.
USB adaptor spec:
Input Voltage: 100 ~ 240V AC
Output Voltage: 5.0V DC/ Output Current: 500mA
- Your battery should be fully charged after 11 hours for the first time, and subsequent charging will take about 3 hours each time. After each full charging, the battery can provide you about 4-6 hours of game playing.

Safety Notice:

- Do not submerge the game player in water or expose it to extreme heat or to strong magnetic fields. Doing so may cause permanent damage to your game player.
- Batteries are only to be charged by adults or by children at least 8 years old.

● ● ● 4 ● ● ●

How do you turn off the game player?

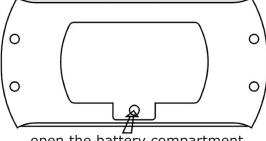
- Slide the "ON/OFF" key to "OFF" to turn off the game player.

Battery Warnings and Notes

To prevent possible battery leakage, overheating or explosion, please pay attention to the following measures.

How to remove battery before disposal of product?

- Open the battery compartment cover by using screwdriver.
- Remove the battery before disposal the product.



Warning

- Shall not be put into seawater or water. Shall be placed in a dry and shady environment when not used.
- Shall not be used or stored near sources of heat such as fire or heater.
- When charging, please use specific Lithium-ion battery charger only.
- Shall not be thrown into the fire or heater
- Shall not be connected as short circuit
- Shall not be struck, thrown, or stepped on
- Shall not be welded directly.
- Do not use nail or other sharp tools to pierce the battery.

● ● ● 5 ● ● ●

Caution

- Do not use or store the battery where it is exposed to extreme heat, such as beneath the window of a car in direct sunlight in a hot day. Otherwise, the battery may be overheated. This can reduce the battery performance and shorten its life.
- Do not place the battery under strong electric field or magnetic field.
- Doing so may damage the battery safety protection devices, thus bringing latent risks.
- Do not use the battery if it gives off an odor, generates heat, becomes discolored or deformed, or appears abnormal in any way. If the battery is in use or being recharged, remove it from the device or charger immediately.

NOTE:

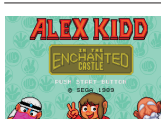
- For Plasma & LCD TV's over 32" , please adjust your TV to the following setting for the best display effect.

Back-Lighted: 100 Brightness: 36 Contrast: 70
Color: 60 Sharpness: 60 Aspect Ratio: 16:9

- If the buttons are not functioning normally or the "LOW BATTERY" indicator light is on, please turn off your device and fully charge the battery to its maximum capacity (please refer to: How to charge your player?) before you turn back on your device to play games.

● ● ● 6 ● ● ●

Alex Kidd in the Enchanted Castle



Alex Kidd's father's life is in danger! Fortunately, facing danger is what Alex does best! To save his father, he must win round after exciting round of "Paper, Rock and Scissors". Winning rounds not only moves Alex that much closer his father, but winning also provides gifts that Alex can utilize for special powers. These will be necessary as the opponents get harder and harder and the danger increases! If Alex can win the ultimate level, he can save his father and win amazing prizes as well! There is not time to lose!

Directional Pad (D-Pad): Controls the direction.
Start Key (Start): Starts the game.

A Key: Jumps up and kicks.
B Key: Attacks by fist.
C Key: Jumps up and kicks.

Alien Storm



Strange and deadly aliens have invaded the earth and it is up to you to stop them! Your battle will take you through numerous environments as you fight your way to the mother-ship to face off with the "mother of all aliens". Each character has unique attacks and special abilities that will add strategic variety to your game play. Additionally, mission objectives provide opportunities for exciting power-ups. It will take all your skills to save the Earth!

Directional Pad (D-Pad): Controls the direction.
Presses the Right Key twice to make hero run.

Start Key (Start): Starts the game. Pauses and un-pauses game.

A Key: Powerful attacks in wide area which takes a lot of energy.
B Key: Attacks in medium power. Presses to attack while in sprint status.

C Key: Tosses forward. Presses to jump while in sprint status.

● ● ● 7 ● ● ●

Arrow Flash



Things are grim. An evil dragon from another galaxy is rapidly approaching Earth and as a space pilot you realize that it is up to you to stop this threat cold. If you fail, your home will be burnt to a cinder. Your ship provides two distinct modes, each known as an Arrow Flash. Using blast weapons and defensive shield capabilities, your challenge is formidable. Hit the thrusters; you have a date with a dragon in outer space!

Directional Pad (D-Pad): Controls the direction.

Start Key (Start): Starts the game. Pauses and un-pauses game.

A Key: Transforms into Planet or Robot mode.
B Key: Shoots.

C Key: Attacks enemies with laser while transforming into planet. Attacks enemies with speeding bullet while transforms into robot.

Altered Beast



In a time of legend, warriors and supernatural foes, Zeus, God of Thunder, summons you from the dead as his champion in the fight of good versus evil. Athena, daughter of Zeus, has been imprisoned by the evil Neff, God of the Underworld, and it is your charge to free her from his clutches. To do so, you must battle Neff's henchmen until you reach the ultimate challenge. Zeus has given you one advantage: the ability to capture spirit balls which you can use to transmute into various beast forms. If you succeed, Zeus will be your ally for all time. If you fail, only Neff knows what pain will be your fate!

Directional Pad (D-Pad): Controls the direction.

Presses the Right Key twice to make hero run.

Start Key (Start): Starts the game. Pauses and un-pauses game.

A Key: Powerful attacks in wide area which takes a lot of energy.
B Key: Attack in medium power. Presses to attack while in running status.

C Key: Tosses forward. Presses to jump while in running status.

● ● ● 8 ● ● ●

Columns III



Columns III is the final game in the series of fast-moving puzzle classics. As in the other games in the series, match colors of dropping objects in order to remove them from the play field; if they rise to high, the game is over. Columns III adds multiple versions for strategic additions to keep the game fresh and exciting. This is the puzzle game that started it all!

Directional Pad (D-Pad): Controls the direction.

Start Key (Start): Starts the game. Pauses and un-pauses game.

A Key: Attack the competitor for shortening the space.
B Key: Arrange the item

C Key: Attack the competitor for shortening the space.

Crack Down



When many bombs are discovered throughout a large laboratory, Ben and Andy are called in to dismantle them before the building explodes all around them! Racing from spot to spot, each bomb must be neutralized with smaller charges before time runs out. Defenses have been placed to make it more dangerous, but Ben and Andy have an array of weapons to help them achieve their goals. Better call the bomb squad! Time is short!

Directional Pad (D-Pad): Controls the direction.

Start Key (Start): Starts the game. Pauses and un-pauses game.

A Key: Changes bullets.

B Key: Shoots. Attacks with fist if the bullets are ran out.

C Key: Bombs in wide area.

● ● ● 9 ● ● ●

Dr. Robotnik's Mean Bean Machine



The evil Dr. Robotnik has always loved to turn people and other objects into robots. In this Tetris style game he is menacing the unsuspecting citizens of Beanville and threatening to make them his next victims of robot transformation! Create matching color groups to save the Bean's, but watch out for the robots. They will try to stop you dead in your tracks. If you fail to make the match into the Mean Bean Machine you go, and Beanville will surely become robot central!

Directional Pad (D-Pad): Controls the direction.

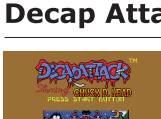
Start Key (Start): Starts the game. Pauses and un-pauses game.

A Key: Presses to arrange the item to right side.

B Key: Presses to arrange the item to left side.

C Key: Presses to arrange the item to right side.

Decap Attack



In an odd and colorful world, anything can happen. Max D. Cap, an evil boss, has taken control of this unusual planet and must be stopped. Chuck D. Head, a headless mummy, rises up as the best hope of this strange world and he will stop at nothing to defeat Max and free the planet. Brightly colored lands, unusual foes and powerful and exotic weapons await you as you guide Chuck in his heroic battle in this side scrolling spectacular!

Directional Pad (D-Pad): Controls the direction.

Start Key (Start): Starts the game. Pauses and un-pauses game.

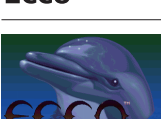
A Key: Opens tool items menu.

B Key: Attacks.

C Key: Jumps. Presses twice while jumping on the air to make hero fly.

● ● ● 10 ● ● ●

Ecco



A whirlpool controlled by the evil vortex queen has sucked your entire dolphin pod to imprisonment in the ocean depths. Only you remain to save them. To do so, you must travel through time and space with the help of the Atlantean time machine in order to find your friends. Ecco is a freemove journey, allowing for adventure, exploration, puzzles and combat all along the way. The play style is up to you!

Directional Pad (D-Pad): Controls the direction.

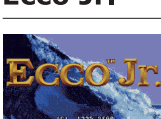
Start Key (Start): Starts the game.

A Key: Attacks by sonar.

B Key: Speeding swims.

C Key: Constantly presses to speed swimming.

Ecco Jr.



In a somewhat unique experience in the Ecco series, Ecco Jr. provides you with an opportunity to explore the vastness of the ocean and time as Ecco the dolphin's speedy son, Ecco Jr. The young Ecco Jr. enjoys all of the wonders that the sea has to offer until the Vortex Queen returns and kidnaps his father. There is no time to lose when Ecco needs to be saved! Adventure through a lush and beautiful ocean world and explore time itself as you complete fun puzzles and engage in underwater combat to save Ecco. Ecco Jr. may be small, but he packs a punch. Not only that, but he is super fast! Look out Vortex Queen; here comes Jr.!

Directional Pad (D-Pad): Controls the direction.

Start Key (Start): Starts the game.

A Key: Speeding swims.

B Key: Attacks by sonar.

C Key: Constantly presses to speed swimming.

● ● ● 11 ● ● ●

ESWAT: Cyber Police City Under Siege



Liberty is a dark, crime ridden metropolis, teeming with criminals who are looking to take advantage of the innocent and the weak. ESWAT places you in the game as a member of the Cyber Police force where it is your job to protect the citizens and stop the criminals. As you advance through this action-shooter, you will find the Master Emerald will open up new weapons and defensive capabilities. If you can arrest the criminal masterminds behind the city's trouble, Liberty may even promote you to chief of the famed ESWAT squad! Look out criminals; ESWAT is on patrol!

Directional Pad (D-Pad): Controls the direction.

Start Key (Start): Starts the game. Pauses and un-pauses game.

A Key: Jumps. Flies while in armored mode.

B Key: Shoots.

C Key: Jumps. Flies while in armored mode.

Flicky



When the babies wander off, there is only one thing to do: lead them back to the safety of their nest. Flicky the mother blue jay has just such a task. It won't be easy to get the baby chicks back though! Hungry cats are on the prowl and many surprising hazards waiting to be found. Puzzle your way through level after level of cat fighting fun in this family favorite!

Directional Pad (D-Pad): Controls the direction.

Start Key (Start): Starts the game. Pauses and un-pauses game.

A Key: Jumps.

B Key: Jumps.

C Key: Jumps.

● ● ● 12 ● ● ●

Gain Ground



Gain Ground is a game of arcade style action and game changing strategy at its finest. Your mission is to save captives and get them to safety, and as the leader of a group of mercenaries, it is up to you to decide which ones to use in each challenge. Every fighter possesses abilities that could be the difference life and death. You might even pick up a new fighter along the way, adding to the strategic possibilities and fun!

Directional Pad (D-Pad): Controls the direction.

Start Key (Start): Starts the game. Pauses and un-pauses game.

A Key: Attacks.

B Key: Attacks.

C Key: Attacks.

Golden Axe



It is a dark time in the Land of Yuria as the evil Death Adder has invaded, kidnapped the princess and seized the Golden Axe. Devastation alone lays in his wake. Three powerful heroes, each with distinct fighting styles, have emerged in a desperate bid to bring justice to Yuria and free the princess. It will take all of the brawn and magic they can muster just to stand a chance of defeating Death Adder! They vow to save the princess or die trying! The rest is up to you.

Directional Pad (D-Pad): Controls the direction.

Start Key (Start): Starts game. Pauses and un-pauses game.

A Key: Uses magic.

B Key: Attacks.

C Key: Jumps.

● ● ● 13 ● ● ●

Jewel Master



The peaceful kingdom of Mythgard seemed blessed for all time. Then the Demon King, Jardine the Mad, came to power and it seemed that all good was gone forever. Jewel Master, weaver of the Elements, was summoned to possess magical rings of great power and to use these rings to conjure spells with his foes. Each ring has a special ability which must be used to pass each of the game's stages. With over 100 levels of gameplay, you will find plenty of challenges on your quest. Your friends are depending on you, so it's time to get in the game!

Directional Pad (D-Pad): Controls the direction.

Upward key is negative.

Start Key (Start): Starts game. Pauses and un-pauses game.

A Key: Negative.

B Key: Jumps.

C Key: Use accouterment.

● ● ● 14 ● ● ●

Shinobi III: Return of the Ninja Master



After their utter annihilation in Shinobi II, the Neo Zeed leaders are secretly rebuilding their evil organization. Shinobi senses their powers growing and he knows that it is up to him to stop them again. Neo Zeed's minions have been ordered to stop Shinobi at all costs. The stakes are the high, and as Joe Musashi – Shinobi – you know that unless you succeed, the world will fall into the clutches of Neo Zeed! You must not fail!

Directional Pad (D-Pad): Controls the direction.

Start Key (Start): Starts game. Pauses and un-pauses game.

A Key: Uses the master skill.

B Key: Attacks.

C Key: Jumps.

Sonic Spinball



Dr. Eggman (AKA Dr.Robotnik) has taken over Mt. Mobius and turned it into a mechanical base. He is using energy from the magma flowing under the volcano to power his Veg-O-Fortress. He has the power to transform helpless animals into robot slaves. Sonic the Hedgehog and Tails must take down this fortress to free the enslaved animals. The only way to make that happen is to trigger an eruption in the volcano it's built on. Sonic knows this can be done by removing the Chaos Emeralds that keep the volcano stable. Dr. Eggman, however, is also aware of the fragile relationship that exists between the Emeralds and the mountain, and he's set an elaborate Pinball Defense System to make sure the precious jewels don't go anywhere.

Directional Pad (D-Pad): Controls the direction.

Start Key (Start): Starts game. Pauses and un-pauses game.

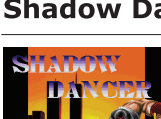
A Key: Left Flipper

B Key: Right Flipper

C Key: All Flipper.

● ● ● 15 ● ● ●

Shadow Dancer - The Secret of Shinobi



Union Lizard, a vast crime empire, has taken over New York. As Shadow Dancer, a master of martial arts, you must do battle in the name of justice. Using all of your kung-fu skills and the help of your faithful dog, it is up to you to stop the evil Ninja's of Union Lizard once and for all and regain the honor of a slain friend. Once New York is safe