



Swan Vintage

designed for life

Toaster

Model: ST17020/ST17010 (all colours) v1.0

Helpline: **01733 404703**





IMPORTANT INFORMATION - RETAIN FOR FUTURE USE

When using any electrical appliance, basic safety precautions should always be followed including the following:

- Always ensure that the voltage on the rating label corresponds to the mains voltage in your home
- Incorrect operation and improper use can damage the appliance and cause injury to the user.
- This appliance can be used by children aged from 8 years and above if they have been given supervision or instruction concerning use of the appliance in a safe way and if they understand the hazards involved. Cleaning and user maintenance shall not be made by children unless they are older than 8 and supervised. Keep the appliance and its cord out of reach of children aged less than 8 years. Check the power cord and plug regularly for any damage. If the cord or the plug is damaged, it must be replaced by the manufacturer or qualified person in order to avoid an electrical hazard.
- Do not use the appliance if it has been dropped or damaged in any way. In case of damage, take the unit in for examination and/or repair by an authorised service agent.
- Never immerse the unit in water or any other liquid for cleaning purposes.
- Remove the plug from the socket by gripping the plug. Do not pull on the cord to disconnect the appliance from the mains. Always unplug the unit when not in use, before cleaning or when adding or removing parts.
- The use of accessory attachments that are not recommended or supplied by the manufacturer may result in injuries, fire or electric shock.
- Do not let the cord hang over the edge of a table or counter. Ensure that the cord is not in a position where it can be pulled on inadvertently.
- Do not allow the cord to touch hot surfaces and do not place on or near a hot gas or electric burner or in a heated oven.
- Do not use the appliance on a gas or electric cooking top or over or near an open flame.
- Use of an extension cord with this appliance is not recommended. However, if it is necessary to use an extension lead, ensure that the lead is suited to the power consumption of the appliance to avoid overheating of extension cord, appliance or plug point. Do not place the extension cord in a position where it can be pulled on by children or animals or tripped over.
- This appliance is not suitable for outdoor use. Do not use the appliance for anything other than its intended use.
- Do not carry the appliance by the power cord.
- Do not leave the appliance unattended during use. Always unplug the unit when not in use or before cleaning.

2

Swan





IMPORTANT INFORMATION - RETAIN FOR FUTURE USE

- Always operate the appliance on a smooth, even, stable surface. Do not place the unit on a hot surface.
- Ensure that the unit is switched off after use.
- The manufacturer does not accept responsibility for any damage or injury caused by improper or incorrect use, or for repairs carried out by unauthorised personnel.
- In case of technical problems, switch off the product and do not attempt to repair it yourself. Return the appliance to an authorised service facility for examination, adjustment or repair. Always insist on the use of original spare parts. Failure to comply with the above mentioned precautions and instructions, could affect the safe operation of this product.
- Your appliance must never be switched on through an external timer or any kind of separate remote control system



TECHNICAL DATA

Description: Toaster

Model: ST17010 (all colours) 2 slice

Input Voltage: 220-240V

Frequency: 50Hz

Power consumption: 800 Watts

Model: ST17020 (all colours) 4 slice

Input Voltage: 220-240V

Frequency: 50Hz

Power consumption: 1600 Watts



CAUTION: Surfaces become hot during use



HOW TO USE

Before first use

Unpack the toaster and remove all packaging materials etc

Place the toaster on a suitable, level surface. Set the browning dial to 3 or 4. Note: The 4 slice version has two independent browning controls.

Place one or two slices of bread into the toaster slots (1 to 4 in the 4 slice version)

Connect the product to the mains supply and press down the carriage lever. NOTE: The carriage lever will only stay down if the product is connected to the mains supply. You can press the cancel button at any time to cancel the toasting process. The toast will pop up when it is ready

THINGS TO NOTE:

On first use, you may notice a slight odour. This is caused by the evaporation of light oils used in manufacture. This only occurs on the first use and does not affect the taste of your toast.

OTHER FUNCTIONS:

The Defrost bread setting is perfect for defrosting and toasting frozen bread. To use this function, press the carriage lever down then press the Frozen Bread button.

The Reheat setting is good for reheating toast that may have gone cold. Press the carriage lever down then press the Reheat button





CLEANING & MAINTENANCE

This product requires very little maintenance.

The toaster is equipped with a crumb tray which slides out from the bottom of the toaster.

This should be removed and the crumbs discarded after each use.

Excessive build up of crumbs can cause an unpleasant odour and – in extreme cases – pose a fire hazard.

For cleaning external surfaces, a soft cloth moistened with a mild detergent solution is all that is required.

DO NOT USE ABRASIVE OR STRONG CHEMICAL CLEANERS

DO NOT IMMERSE ANY PART OF THE PRODUCT IN WATER

ALWAYS ENSURE THE PRODUCT IS UNPLUGGED FROM THE MAINS SUPPLY AND COMPLETELY COOL BEFORE CLEANING.





DOCUMENTATION

We Swan Products Ltd declare that this product conforms to the following product legislation in accordance with the following directive(s):

2004/108/EEC The EMC Directive (the Electromagnetic Compatibility Directive).

2006/95EC. The LVD Directive (Low Voltage Directive).

2011/65-EU. The RoHS directive (Restriction of Hazardous Substances Directive)

EC 1935/2004 Food Contact



WARRANTY

This product is guaranteed for 2 years from the date of original purchase. If any defect arises due to faulty materials of workmanship the faulty products must be returned to the place of purchase. Refunds or replacement is at the discretion of the store.

The following conditions apply:

- The product must be returned to the retailer with proof of purchase.
- The product must be installed and used in accordance with the instructions contained in this instruction guide.
- It must be used only for domestic purposes.
- It does not cover wear and tear, damage, misuse or consumable parts.
- Swan Products Ltd has limited liability for incidental or consequential loss or damage.
- This guarantee is valid in the UK and Eire Only.



BS PLUG

The wires in the mains lead are coloured in accordance with the following code:

BLUE	NEUTRAL
BROWN	LIVE
GREEN/YELLOW	EARTH

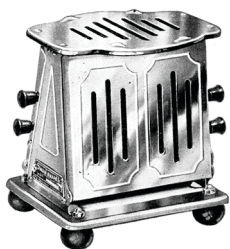
As the colours of the wire in the mains lead of this appliance may not correspond with the colour markings identifying the terminals on your plug, proceed as follows: The wire which is coloured BLUE must be connected to the terminal which is marked with the letter N or coloured black. The wire which is coloured BROWN must be connected to the terminal which is marked with the letter L or coloured red. The wire which is coloured GREEN/YELLOW must be connected to the terminal which is marked with the letter E or (earth symbol) and is coloured GREEN or GREEN/YELLOW.

WARNING: THIS APPLIANCE MUST BE EARTHED





SWAN BRAND HERITAGE



Did you know...

The “8-30” toaster was one of the most efficient at the time. At just over £1 it was also one of the cheapest. This was a two slice model in chrome plated steel. Even back in 1939 Swan was at the forefront of product innovation. This toaster was one of the first to have a special plate on top for warming buns/muffins etc.



DISPOSAL OF UNIT



Appliances bearing the symbol shown here may not be disposed of in domestic rubbish. You are required to dispose of old electrical and electronic appliances like this separately. Please visit www.recycle-more.co.uk or www.recyclenow.co.uk for access to information about the recycling of electrical items. Please visit www.weeeireland.ie for access to information about the recycling of electrical items purchased in Ireland. The WEEE directive, introduced in August 2006, states that all electrical items must be recycled, rather than taken to landfill. Please arrange to take this appliance to your local Civic Amenity site for recycling, once it has reached the end of its life.





www.swan-brand.co.uk



Scan this QR code
to hear about
our story



We love
what we do



we're proud
of our quality



Find us on Facebook

* on selected products

Copyright © Swan Products Ltd.
PO Box 3117, Stoke-on-Trent ST4 9GD