



SU08H30 SERIES

Vacuum Cleaner user manual

- * Please read the User Manual thoroughly before operating the vacuum.
- * For indoor use only.

English

imagine the possibilities

Thank you for purchasing a Samsung product.

SAMSUNG

Contents

YOUR VACUUM CLEANER

- 07 Product view
- 08 Carton contents

07

BEFORE USING THE VACUUM CLEANER

- 09 Assemble the vacuum cleaner

09

OPERATING THE VACUUM

- 10 Stowing the power cord
- 11 Operating the On/Off Switch
- 12 Operating the Motorized brush On / Off Switch
- 12 Resetting the overload protector
- 13 Using the air tap
- 13 Using the vacuum's handle (The dust bin handle)
- 13 Operating the dust sensor (Option)
- 14 Using the accessory

10

MAINTENANCE

- 15 Emptying the dust bin
- 15 Cleaning the grille
- 16 Cleaning the premotor filter
- 17 Cleaning the exhaust filter
- 18 Checking the brush
- 18 Checking for clogs
- 19 Mini turbo brush (Optional)

15

TROUBLESHOOTING

20

Safety information

SAFETY INFORMATION



Before operating the appliance, please read this manual thoroughly and retain it for your reference.



Because the following operating instructions cover various models, the characteristics of your vacuum cleaner may differ slightly from those described in this manual.

CAUTION/WARNING SYMBOLS USED

	Indicates that a risk of death or serious injury exists.
	Indicates that a risk of personal injury or material damage exists.

OTHER SYMBOLS USED

	Indicates something you must NOT do.
	Indicates instructions you must follow.
	Indicates that you must disconnect the power plug from the socket.



This vacuum cleaner is designed for household use only.

Do not use this vacuum cleaner to clean building waste or debris.
Clean the filters regularly to prevent fine dust from collecting in them.
Do not use this vacuum cleaner with any of the filters removed.

Failure to meet these requirements could cause injury, damage the vacuum cleaner and void your warranty.

IMPORTANT SAFETY INSTRUCTIONS

When using an electrical appliance, you should always follow these basic precautions:

READ ALL INSTRUCTIONS BEFORE USING YOUR UPRIGHT VACCUM

WARNING – TO REDUCE THE RISK OF FIRE, ELECTRIC SHOCK, OR INJURY:

1. Do not leave the vacuum cleaner unattended when it is plugged in. Unplug it from the outlet when you are not using it and before servicing.
2. Do not use outdoors or on wet surfaces.
3. Do not allow the vacuum to be used as a toy.
Pay close attention when the vacuum is used by or near children.
4. Use only as described in this manual. Use only the manufacturer's recommended attachments.
5. Do not use with a damaged cord or plug.
If the vacuum is not working as it should, has been dropped, damaged, left outdoors, or dropped into water, bring it to a service center.
6. Do not pull or carry the vacuum by the cord, use the cord as a handle, close a door on the cord, or pull the cord around sharp edges or corners.
Do not run the vacuum over the cord.
Keep the cord away from heated surfaces.
7. Do not unplug by pulling on the cord. To unplug, grasp the plug, not the cord.
8. Do not handle the plug or vacuum with wet hands.
9. Do not put any object into openings or vents. Do not use with any

opening blocked.

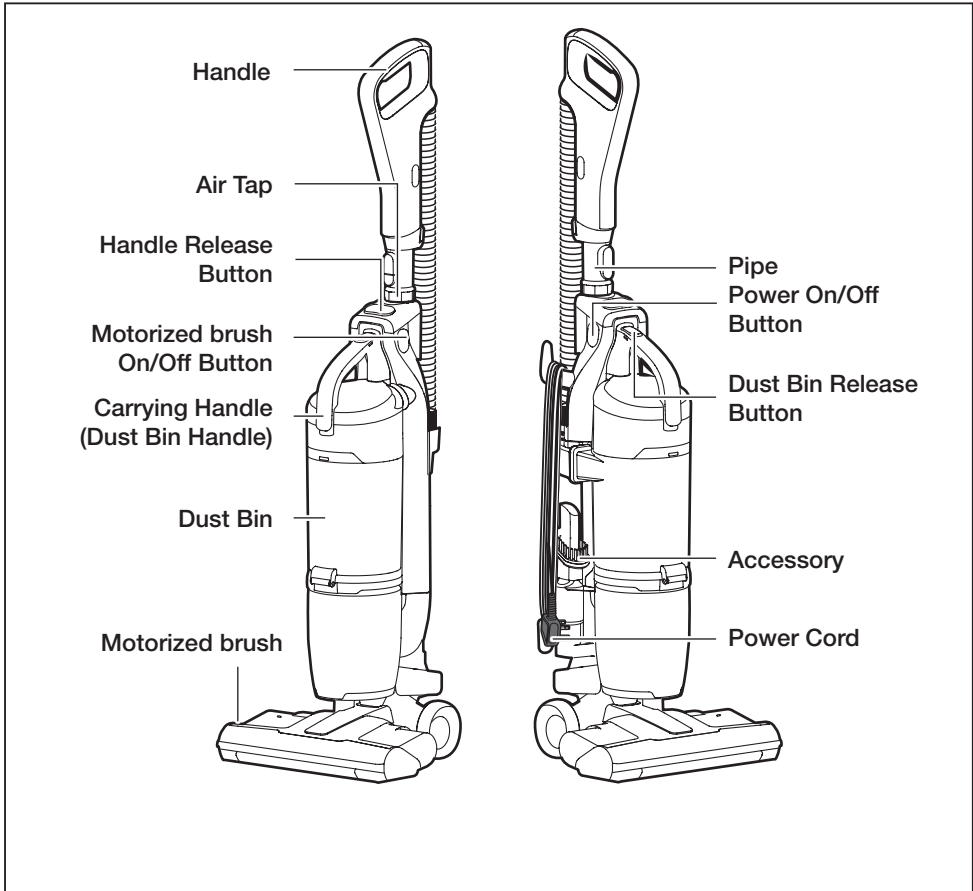
Keep free of dust, lint, hair, and anything that may reduce air flow.

10. Keep hair, loose clothing, fingers, and all parts of your body away from openings and moving parts.
11. Turn off all controls before unplugging.
12. Use extra care when cleaning on stairs.
13. Do not use to pick up flammable or combustible liquids, such as gasoline, or use in areas where they may be present.
14. Do not pick up anything that is burning or smoking, such as cigarettes, matches, or hot ashes.
15. Do not use without the dirt cup and/or filters in place.
16. Do not use the vacuum cleaner in an enclosed space filled with vapors given off by oil base paint, paint thinner, some moth proofing substances, flammable dust, or other explosive or toxic materials.
17. Store your vacuum cleaner indoors, in a cool and dry area.
18. Use only on dry, indoor surfaces.
19. Do not touch the brush drum when it is rotating.
20. Keep suction away from your face when using nozzles and pipe.
21. Do not pull the power cord around sharp corners and do not allow it to become trapped.
22. This appliance can be used by children aged from 8 years and above and people with reduced physical, sensory or mental capabilities or lack of experience and knowledge if they have been given supervision or instruction concerning use of the appliance in a safe way and understand the hazards involved. Children shall not play with the appliance. Cleaning and user maintenance shall not be done by children without supervision. Children should be supervised to ensure that they do not play with the vacuum.
23. You must remove the plug from the socket-outlet before cleaning or performing maintenance on the vacuum.
24. If the power cord is damaged, it must be replaced by the manufacturer or its service agent or a similarly qualified person.
25. Do not pick up hard or sharp objects such as glass, nails, screws, coins, etc.

26. Always turn off the vacuum before connecting or disconnecting the motorized brush.
27. Don't touch the exhaust vent when the exhaust temperature is hot.
28. Please do not spray water directly to the exterior of product for the maintenance.
29. Please do not clean with flammable spray such as benzene, thinner, alcohol, volatile substances and dust remover for the maintenance.
30. When you use a flammable spray such as dust remover or natural gas leaks, please open the windows for ventilation and do not touch your hands to the wall outlet.
31. Please contact the manufacturer or service center for a replacement.

Your vacuum cleaner

PRODUCT VIEW

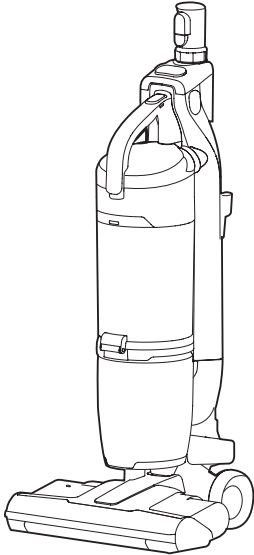


Do not plug in your vacuum cleaner until you are familiar with all instructions and operating procedures.

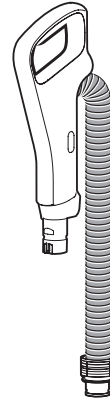


Plastic film can be dangerous.
To avoid the danger of suffocation, keep the film away from babies and children.

CARTON CONTENTS



(1)



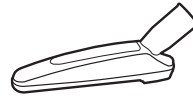
(2)



(3)



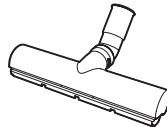
(4)



(5)



(6)



(7)



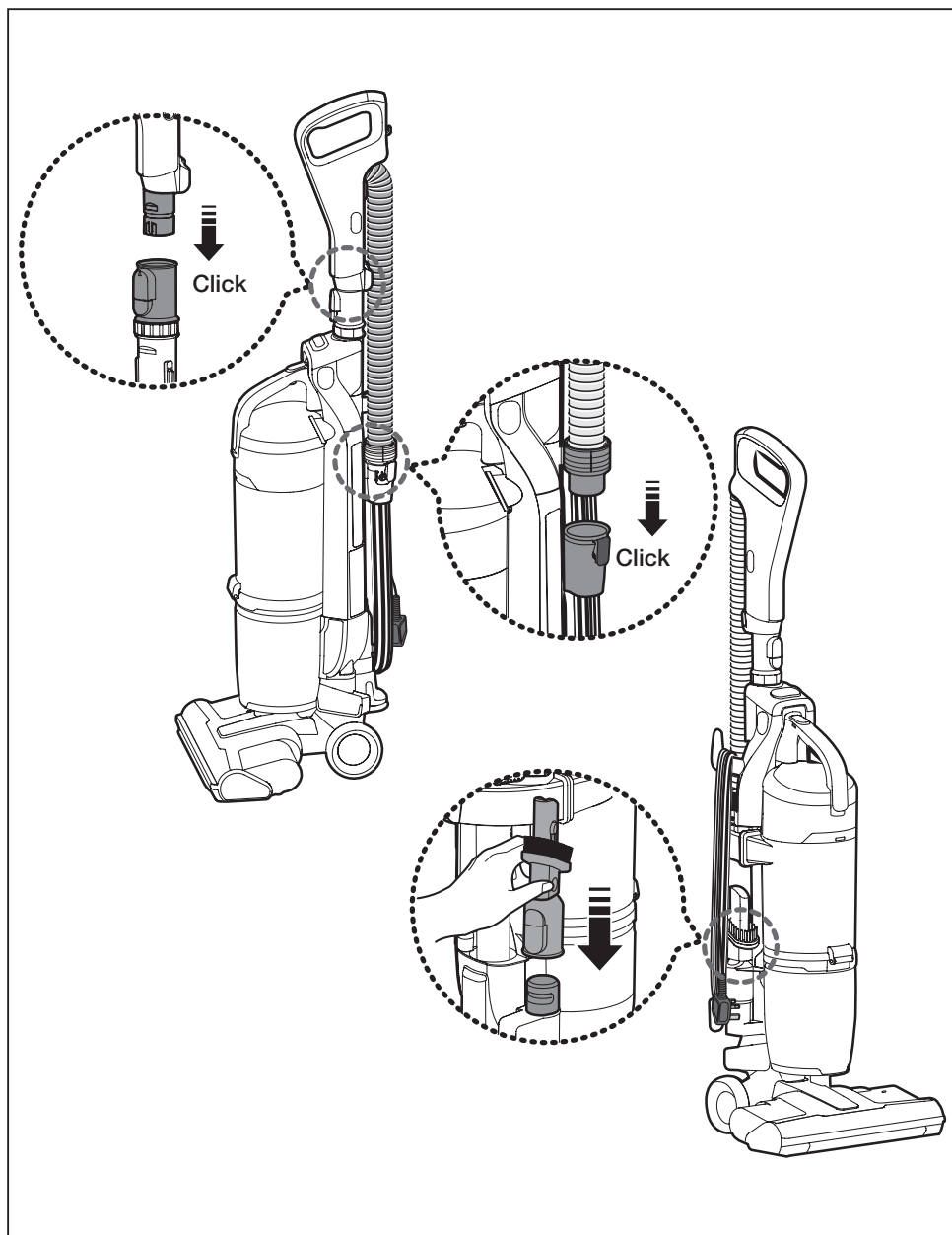
(8)

- Empty carton. Find the parts shown above before disposing of packing materials.

1. Vacuum cleaner body & Pipe
2. Handle
3. 2 In 1 Accessory
4. Mini turbo brush (Option)
5. Furniture tool (Option)
6. Users Manual
7. Eco Hard Floor
8. Pipe (Connector for Eco Hard Floor)

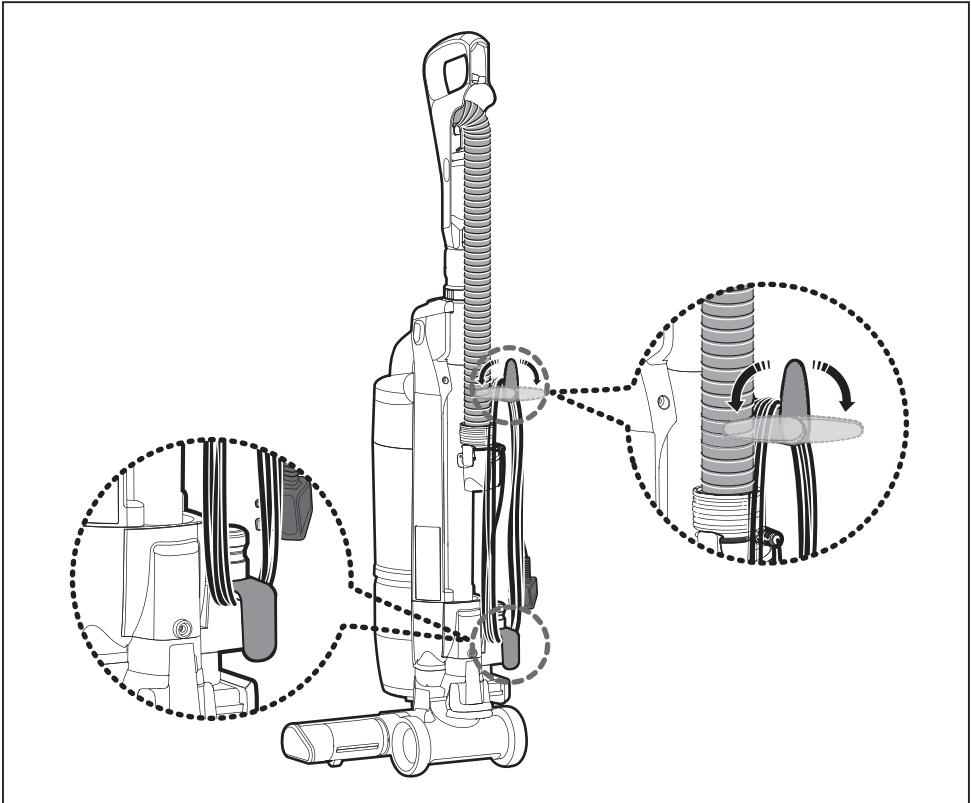
Before using the vacuum cleaner

ASSEMBLE THE VACUUM CLEANER



Operating the vacuum

STOWING THE POWER CORD

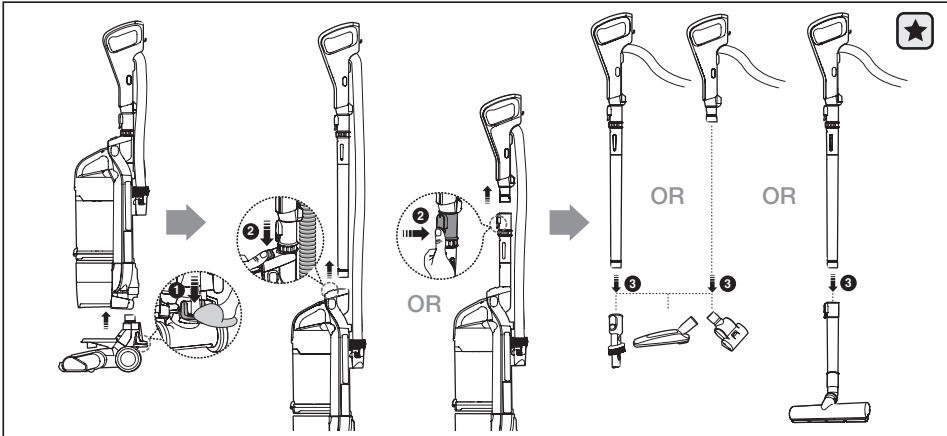


When removing the plug from an electrical outlet, grasp the plug, not the cord.



OPERATING THE ON/OFF SWITCH

Detachable mode

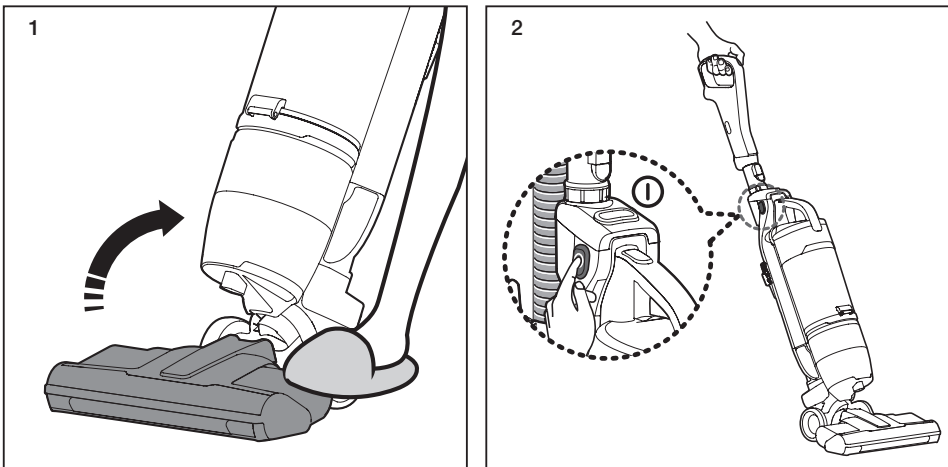


Please return the body to the brush for the storage



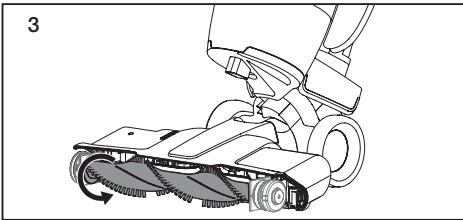
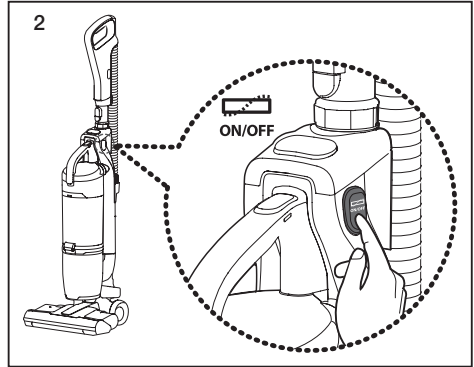
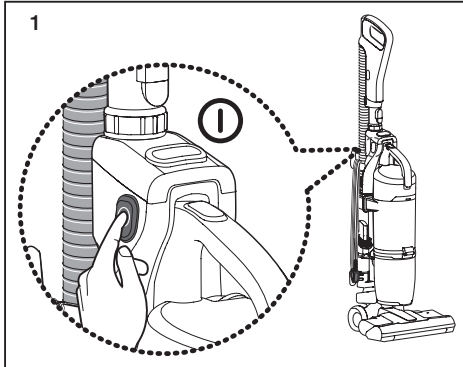
"Eco Hard Floor" brush and Pipe(Connector for Eco Hard Floor) should be connected to the tip of Pipe, not the end of handle.

Upright mode



- Place your foot gently on the Motorized brush and tilt the handle back to start cleaning.
- Push the power On/Off switch.

OPERATING THE MOTORIZED BRUSH ON / OFF SWITCH



- Push the power On/Off switch, and then push the Motorized brush On/Off switch.
- The Brush Switch should be in the "On" position for normal carpet cleaning.
- Turn the Brush Switch "Off" for bare floor cleaning or other delicate surfaces.

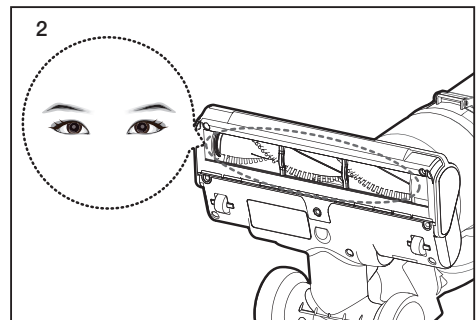
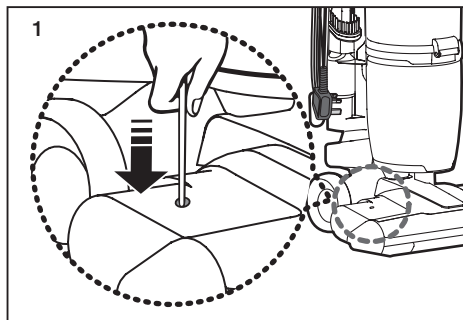


Do not invert the power brush while it is running.



Motorized brush only works when the body is tilted back.

RESETTING THE OVERLOAD PROTECTOR

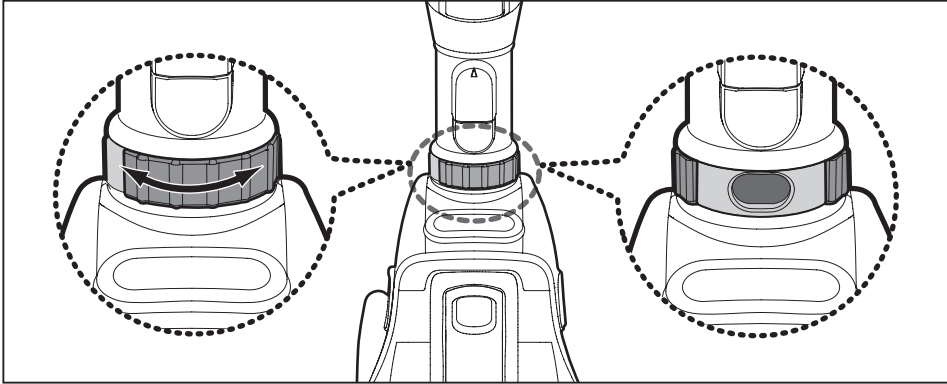


- The overload protector shuts off the brush motor if the Motorized brush becomes obstructed. To reset the overload protector, use a pen tip to press the reset switch.



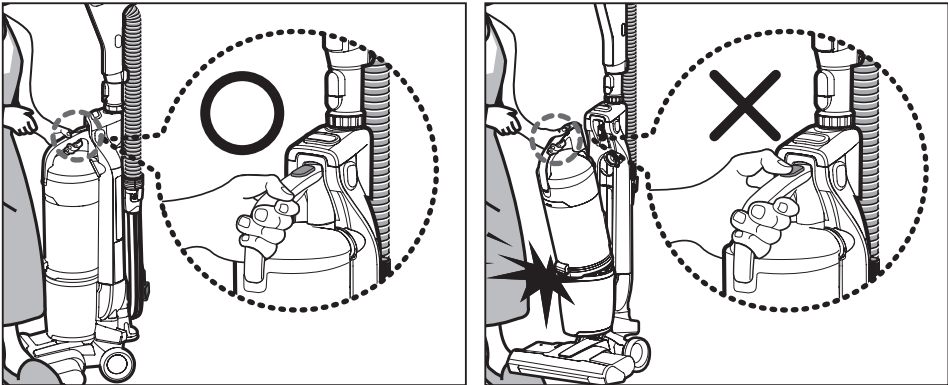
Before starting the vacuum cleaner after resetting the overload protector, please check and clean the motorized brush.

USING THE AIR TAP



- Due to the suction power of this vacuum, it may become necessary at time to adjust the suction power on the handle. If the vacuum seems difficult to push or pull on high pile carpets and area rugs, adjust the suction power by rotating air tap 180° to open valve. Rotate the air tap to close the valve when you need high suction and for vacuuming floors.

USING THE VACUUM'S HANDLE (THE DUST BIN HANDLE)



When you carry the vacuum cleaner by the handle, do not push the dust bin release button.

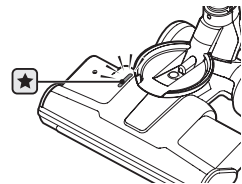
OPERATING THE DUST SENSOR (OPTION)

- Indicates the amount of dust being picked up and passing by the sensor which assist the user to clean more efficiently.
- The dust sensor is activated automatically when the cleaner runs and is turned off when the cleaner is stopped.



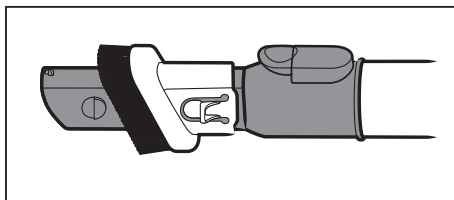
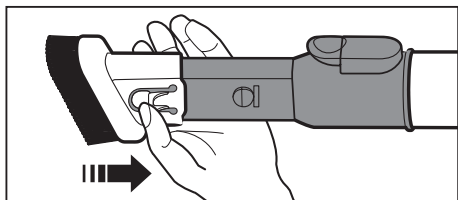
Green : Amount of dust passing sensor is small.

Red : Amount of dust passing sensor is large.

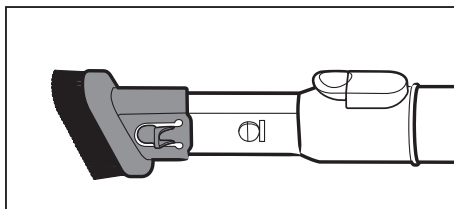
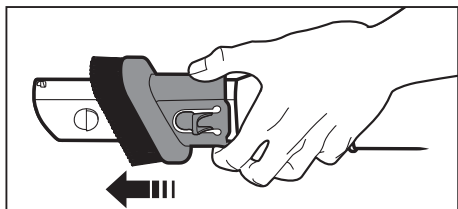


USING THE ACCESSORY

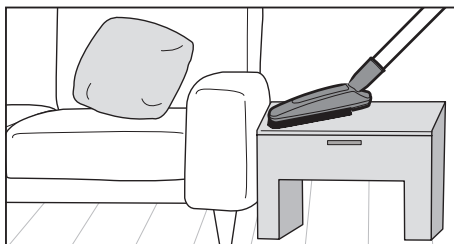
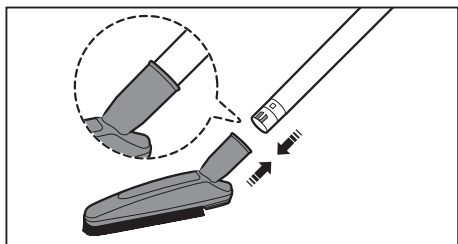
Crevice tool



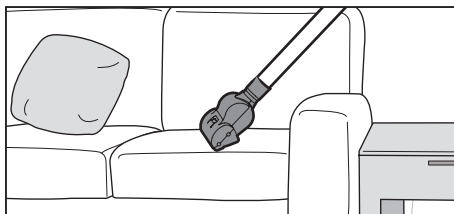
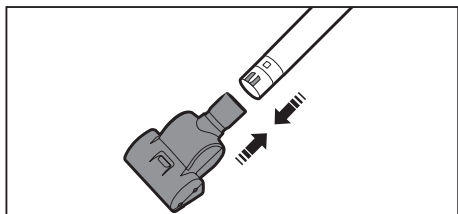
Dusting Brush



Furniture tool (OPTIONAL)

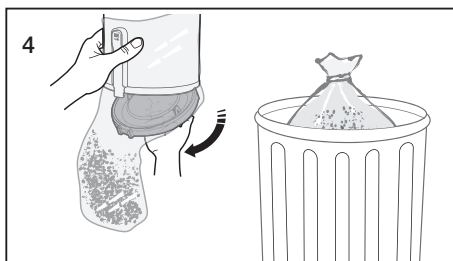
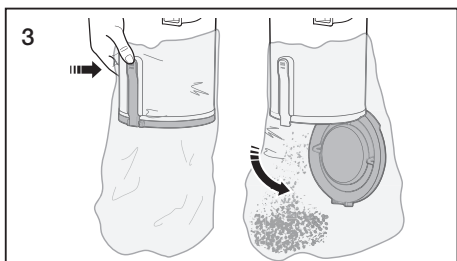
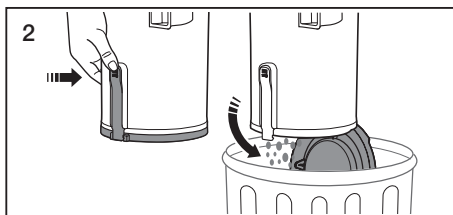
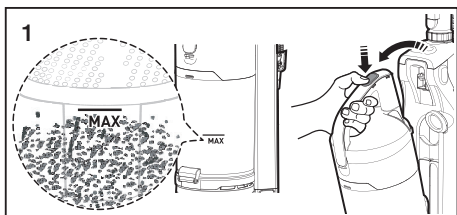


Mini turbo brush (OPTIONAL)



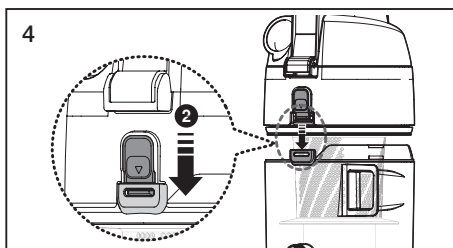
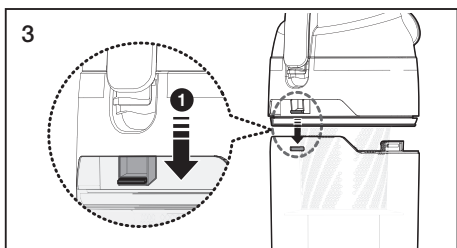
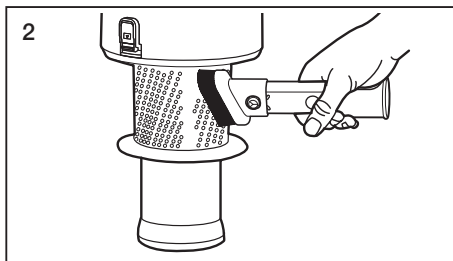
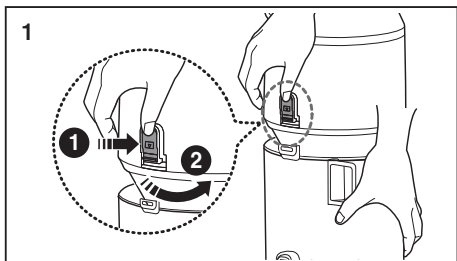
Maintenance

EMPTYING THE DUST BIN

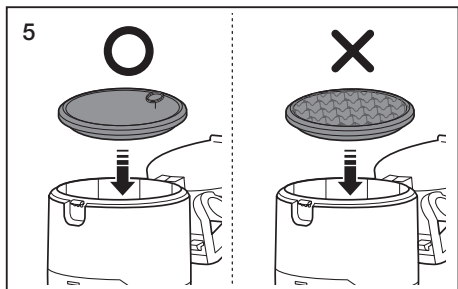
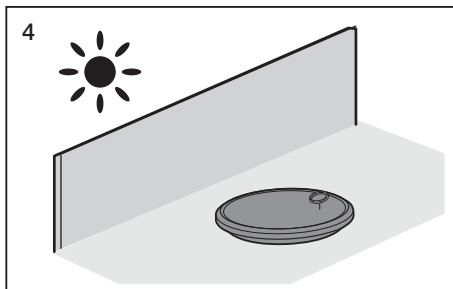
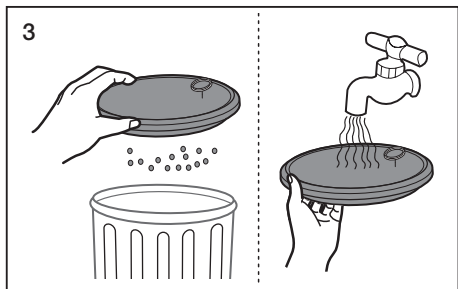
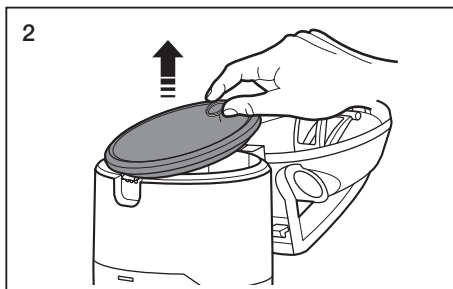
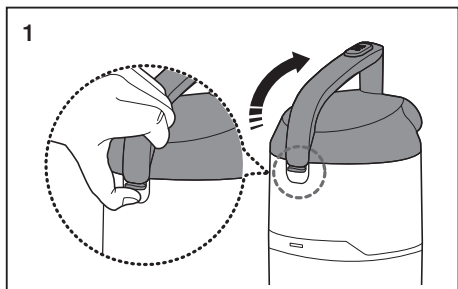


Alternately, for asthma or allergy sufferers: Follow steps 3 and 4.

CLEANING THE GRILLE



CLEANING THE PREMOTOR FILTER



Check the premotor filter regularly and wash every 1~2 months.

Make sure the premotor filter is completely dry before putting it back into the vacuum cleaner. Allow it to dry for 12 hours.

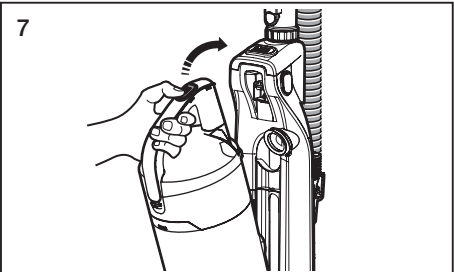
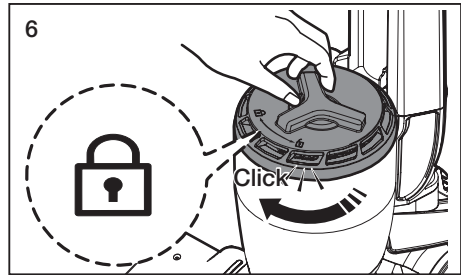
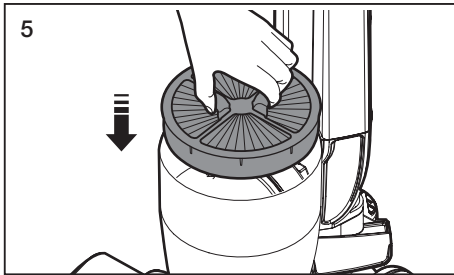
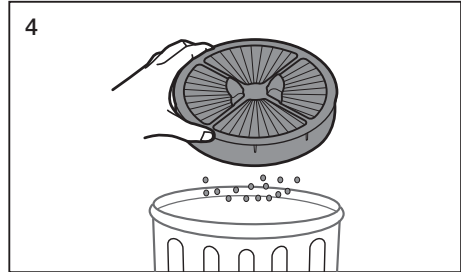
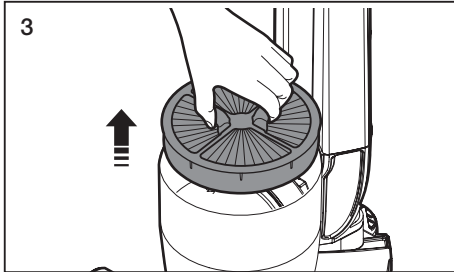
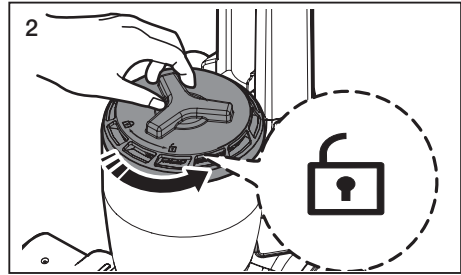
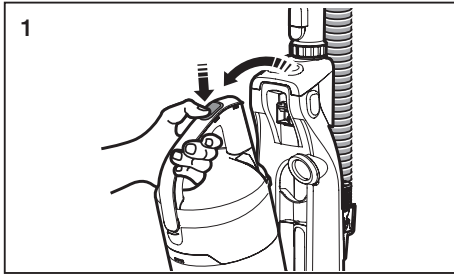
Do not use a wet filter

Replace the dust filter if it becomes damaged or deformed.

The dust bin cover will not close if the premotor filter is not installed.



CLEANING THE EXHAUST FILTER



Clean the exhaust filter when suction is noticeably and continuously reduced or the vacuum cleaner overheats abnormally.

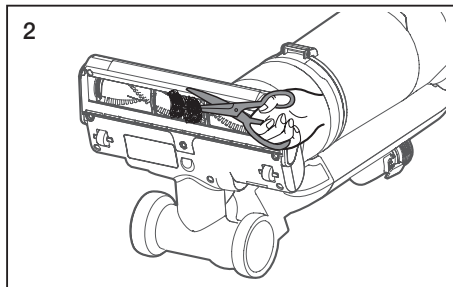
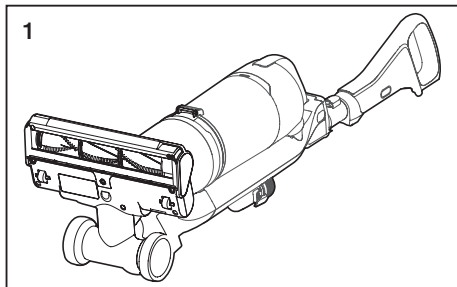
Note : The exhaust filter is not washable.

Replace the exhaust filter if cleaning does not resolve the problem.

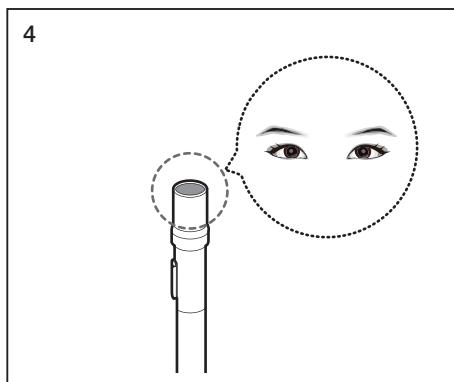
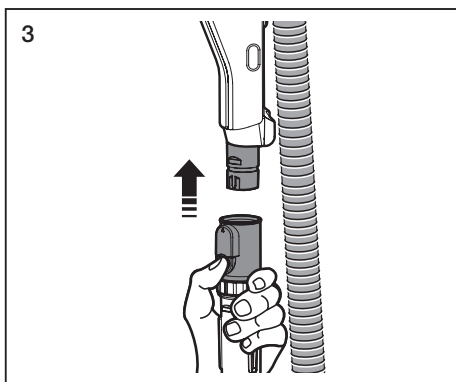
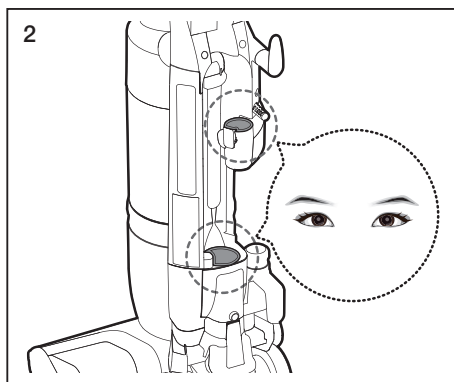
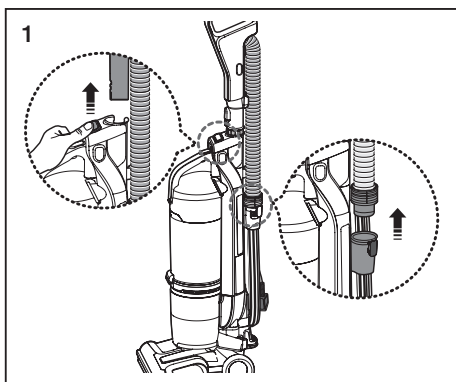
The dust bin will not re-attach to the vacuum if the exhaust filter cover is not installed correctly.

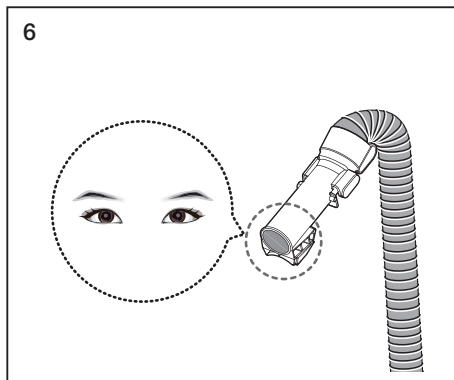
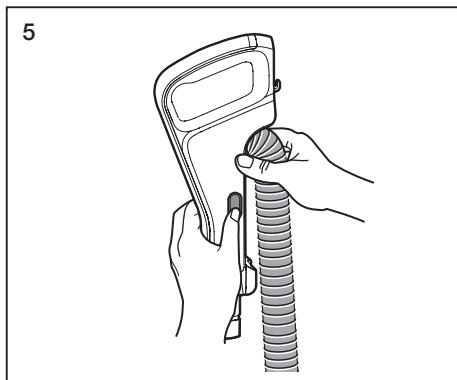
CHECKING THE BRUSH

Checking the rotating floor brush and drive belt



CHECKING FOR CLOGS

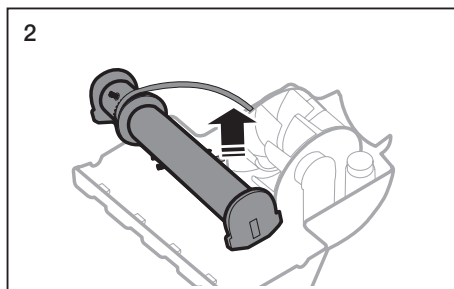
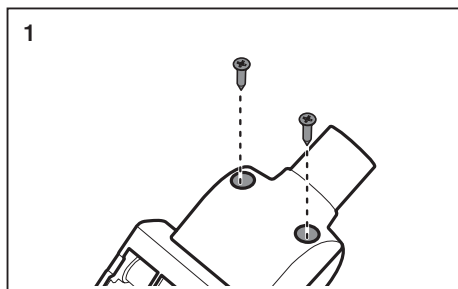




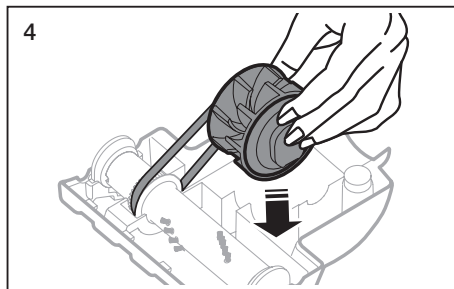
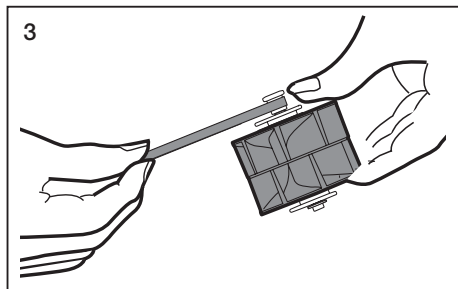
Before checking for clogs, turn off the Motorized brush and unplug the vacuum.

MINI TURBO BRUSH (OPTIONAL)

INSPECTING THE BRUSH ROLL & BELT



- If a clog is present or debris is visible, inspect the brush roll.



- If the belt is broken or cracked, replace it with a new belt following the instructions above.

Troubleshooting

Check this list of problems and possible solutions before bringing your vacuum to a service center.

PROBLEM	SOLUTION
Vacuum won't run.	<ul style="list-style-type: none">• Check the electrical plug. Make sure it is fully plugged in.• Press the Power on/off button.• Reset overload protector.
Suction Motor does not start. Thermal protector activated.	<ul style="list-style-type: none">• Allow the vacuum to cool.
Motorized brush does not start.	<ul style="list-style-type: none">• Check the power ON/OFF button and the brush ON/Off button.• Cut hair or string off the brush.• Reset the overload protector.
Vacuum won't pick up or low suction.	<ul style="list-style-type: none">• Empty the dust bin.• Clean the filter and confirm that the filter assembly is positioned properly.• Check the hose connection or flow path.
Dust escaping from the vacuum.	<ul style="list-style-type: none">• Empty the dust bin.• Clean the pre-motor filters.• Clean or replace the exhaust filter.• Confirm that the filter assembly is positioned properly.
Cleaner tools won't pick-up.	<ul style="list-style-type: none">• Check inlets, pipe, and dust bin for obstructions. Remove obstruction.• Empty the dust bin.• Remove and clean the filters.• Confirm that the dust bin is locked properly.

This vacuum cleaner is approved by the following:
Electromagnetic Compatibility Directive : 2004/108/EEC
Low Voltage Directive : 2006/95/EC

Product fiche

[English]

According to Commission Regulation (EU) No 665/2013 and No 666/2013

A	Supplier	Samsung Electronics., Co. Ltd	
B	Model	SU08H3020P	SU08H3050P
C	Energy Efficiency	A	
D	Annual Energy Consumption (kWh/yr)	28	
E	Carpet Cleaning Performance Class	B	
F	Hardfloor Cleaning Performance Class	A	
G	Dust Re-Emission Class	A	
H	Sound Power Level (dBA)	87	
I	Rated Input Power (W)	750	
J	Type	General purpose vacuum cleaner	

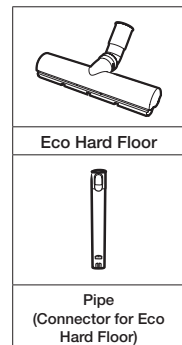
05 TROUBLESHOOTING

1) Indicative annual energy consumption (kWh per year), based on 50 cleaning tasks. Actual annual energy consumption will depend on how the appliance is used.

2) Measurements for power consumption and performance are based on methods in EN 60312 - 1 and EN 60704.

Notes on the energy label

- Declared energy efficiency and cleaning performance class on carpet can be met with the motorized brush.
- Declared energy efficiency and cleaning performance class on hard floor with crevice can be met with the "Eco Hard Floor" brush and the "Pipe (Connector for Eco Hard Floor)" which is used for the extension of the main pipe for the best performance.
- The values provided on the energy label have been determined according to the prescribed measuring process (in accordance with EN60312 - 1).



memo

memo



If you have any questions or comments relating to Samsung products, please contact the SAMSUNG customer care center.

COUNTRY	CUSTOMER CARE CENTER	WEB SITE
U.K	0330 SAMSUNG (7267864)	www.samsung.com
SOUTH AFRICA	0860 7267864 (SAMSUNG)	www.samsung.com



DJ68-00723A-00