

Experts In Home Cleaning™

CLEANview™ COMPACT

USER'S GUIDE

12R7 SERIES 220-240V

- 2 Thank You
- 3 Safety Instructions
- 4 Product View
- 5 Assembly
- 5-6 Operations
- 6-9 Maintenance and Care
- 9-10 Troubleshooting
- 10 Replacement Parts
- 11 Warranty
- 12 Consumer Services



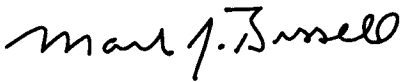
Thanks for buying a BISSELL CleanView™ Compact Bagless Canister

We're glad you purchased a BISSELL CleanView Compact bagless canister vacuum. Everything we know about floor care went into the design and construction of this complete, high-tech home cleaning system.

Your BISSELL CleanView Compact bagless canister vacuum is well made, and we back it with a limited one year warranty. We also stand behind it with a knowledgeable, dedicated Consumer Services department, so, should you ever have a problem, you'll receive fast, considerate assistance.

My great-grandfather invented the floor sweeper in 1876. Today, BISSELL is a global leader in the design, manufacture, and service of high quality homecare products like your BISSELL canister vacuum.

Thanks again, from all of us at BISSELL.



Mark J. Bissell
Chairman, President & CEO

IMPORTANT SAFETY INSTRUCTIONS

When using an electrical appliance, basic precautions should be observed, including the following:

READ ALL INSTRUCTIONS BEFORE USING YOUR CANISTER VACUUM.

WARNING: To reduce the risk of fire, electric shock, or injury:

- Use indoors only.
- For dry pick up only.
- Do not leave machine when it is plugged in.
- Do not use with damaged cord or plug.
- If appliance is not working as it should, has been dropped, damaged, left outdoors, or dropped into water, return it to a service agent.
- Do not handle unit with wet hands.
- Do not pull or carry by cord, use cord as a handle, close door on cord, pull cord around sharp corners or edges, run appliance over cord, or expose cord to heated surfaces.
- Do not unplug by pulling on cord. unplug by grasping plug.
- Do not run appliance over cord.
- Do not handle plug or appliance with wet hands.
- Do not expose hair, loose clothing, fingers or body parts to openings or moving parts.
- Do not pick up hot or burning objects such as cigarettes, matches, or hot ashes.
- Do not pick up flammable or combustible materials (lighter fluid, petrol, kerosene, etc.) or use in the presence of explosive liquids or vapour.
- Do not use appliance in an enclosed space filled with vapours given off by oil base paint, paint thinner, some moth proofing substances, flammable dust, or other explosive or toxic vapours.
- Not intended for use by persons (including children) with reduced physical, sensory or mental capabilities, or lack of experience and knowledge, unless they have been given supervision or instruction concerning use of the appliance by a person responsible for their safety

- Young children should be supervised to ensure that they do not play with the appliance.
- Remove plug from electrical outlet before cleaning or maintaining the appliance.
- If the supply cord is damaged, it must be replaced by the manufacturer or its service agent in order to avoid a hazard.
- Do not pick up toxic material (chlorine bleach, ammonia, drain cleaner, petrol, etc.).
- Do not use for any purpose other than described in this User's Guide.
- Use only manufacturer's recommended attachments.
- Do not use with any opening blocked; keep free of dust, lint, hair, and anything that may reduce air flow.
- Keep appliance on a level surface.
- Turn off all controls before unplugging.
- Be extra careful when cleaning stairs.
- This appliance is provided with double insulation. Use only identical replacement parts.
- Do not use without the dirt cup and filters in place.
- Pay close attention when working around children.

SAVE THESE INSTRUCTIONS.

THIS MODEL IS FOR HOUSEHOLD USE ONLY.

IMPORTANT

FOR OPERATION ON A 220-240 VOLT A.C. 50/60 Hz POWER SUPPLY ONLY.

If your appliance is fitted with a nonrewireable BS 1363 plug it must not be used unless a 13 amp (ASTA approved to BS 1362) fuse is fitted in the carrier contained in the plug. (Spares may be obtained from your BISSELL supplier). If for any reason the plug is cut off, it must be disposed of, as it is an electric shock hazard should it be inserted into a mains socket.

Product view



Combination Crevice Tool/Dusting Brush

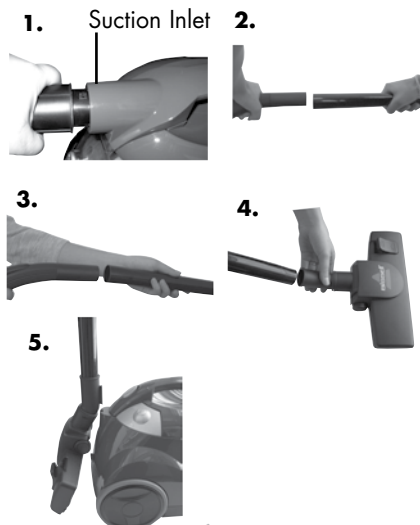
⚠ CAUTION:
Do not plug in your vacuum until you are familiar with all instructions and operating procedures.

Assembly

1. Connect hose to vacuum by inserting hose connector on the end of the hose into the suction inlet. Make sure the hose is positioned so the tabs on the hose connector line up with the notches on the suction inlet. Once inserted into the suction inlet, turn counter clockwise to lock into place.
2. Attach extension wands section together by inserting into one another and twisting slightly to tighten.
3. Connect hose handle to the end of the extension wand and twist slightly to tighten.
4. Connect floor nozzle to the end of the extension wand and twist slightly to tighten.
5. Once assembled, you can store your vacuum by inserting the storage clip (located on the back of the floor nozzle) into the storage slot on the rear of the vacuum.

WARNING:

Plastic film can be dangerous. To avoid danger of suffocation, keep away from babies and children.



Operations

Power cord

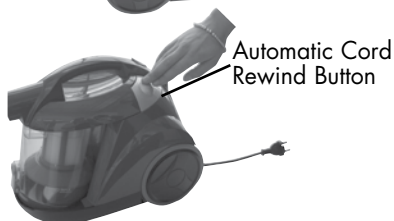
The power cord is located at the rear of the vacuum. Gently pull out the power cord, watching for the yellow line. Stop pulling the power cord once the yellow line is visible. There is also a red line, which indicates the end of the usable cord. Do not pull the power cord out beyond the red line.

Automatic cord rewind

Your vacuum is equipped with an automatic cord rewind. When cleaning is finished, press the power button OFF and grasp the plug to disconnect from the electrical outlet. Hold the plug and press the automatic cord rewind button to rewind the cord automatically.

Power button

Turn the power ON or OFF by pressing lightly downward on the power button (⓪).



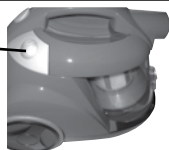
CAUTION:

Be careful to avoid injury as cord retracts very quickly.

CAUTION:

Before using your vacuum, make sure that the dirt cup and all filters are in place. Do not operate your vacuum without the dirt cup and filters.

Power Button



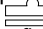
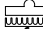
Operations

Special tools

Your BISSELL CleanView Compact is not only a powerful carpet and rug vacuum cleaner, it's also a versatile bare floor and above floor vacuum cleaner when you select one of the special tools.

Floor nozzle:

Use to vacuum carpets, rugs and bare floors. Swivel head turns to get into tight spaces and fits under cabinets.

1. To vacuum carpets and rugs, push the brush switch to the carpet position . This will pull the brushes up into the floor nozzle.
2. To vacuum bare floors, push the brush switch to the bare floor position . This will extend the brushes down from the floor nozzle.

Combination crevice tool/dusting brush:

Use the crevice tool in tight, narrow spaces. Use the dusting brush to clean curtains, draperies, cushions and fabrics.

Air flow regulator

Open the air flow regulator by sliding the regulator down towards the extension wand to an open position. This will reduce the suction power for vacuuming delicate fabrics.

For full suction power, close the air flow regulator by sliding the regulator up to the closed position.

Maintenance and care

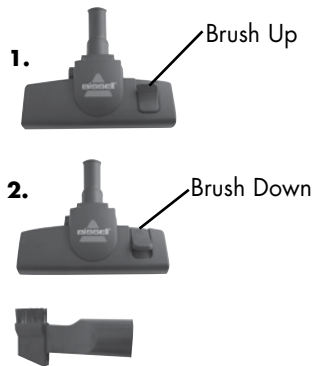
Empty the dirt cup

Empty the dirt cup as soon as the dirt reaches the "FULL" lines on the sides of the dirt cup.

1. Unplug the vacuum from the electrical outlet.
2. Remove the hose by turning the hose connector counter clockwise and pulling it out from the suction inlet. Set hose aside.
3. Press the dirt cup release button on the carry handle and lift up to remove the dirt cup.

Tip:

Before cleaning under low furniture, check area first for objects that might harm the unit or block the hose.



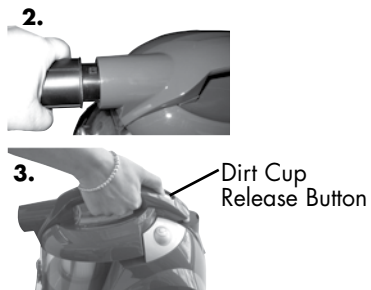
Tip:

Hair, string and small objects can block the hose and tools. Check them occasionally for obstructions.



Tip:

Use the air flow regulator to reduce air flow as needed when using the tools.



Maintenance and care

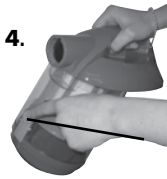
Empty the dirt cup continued

4. Choose an emptying method. Method #2 is recommended for allergy sufferers.

Method #1 – Hold the dirt cup over a trash can and push the emptying button to open the bottom. Close the bottom after the dirt empties.

Method #2 – Place a plastic bag over the bottom of the dirt cup. Push the emptying button through the plastic to open the bottom. After the dust settles, close the bottom and remove the bag to discard.

5. Replace the dirt cup by placing it back into the vacuum and pushing down on the carry handle until it snaps back into place.



Emptying Button

⚠ WARNING:

To reduce the risk of electric shock, turn power switch OFF and disconnect plug from electrical outlet before performing maintenance or troubleshooting checks.

Cleaning the dirt cup filters

Use only BISSELL replacement filters in your CleanView Compact.

1. Unplug the vacuum from the electrical outlet.
2. The dirt cup filters can be reached by removing the dirt cup from the vacuum, grasping the handle on the bottom of the dirt cup filter assembly and turning counter clockwise to unlock. Pull straight down to remove.
3. Remove the dirt cup filter screen by grasping the bottom of the filter frame base and pulling straight up.
4. Remove the dirt cup filter by grasping the bottom of the filter frame base and turning the dirt cup filter counter clockwise and pulling straight up.
5. The dirt cup filter screen and dirt cup filter can be hand washed in cold water with a mild detergent. Rinse well and air dry thoroughly before placing back onto the filter frame base.
6. Attach the dirt cup filter back onto the filter frame base by lining up the tabs on the filter base with the notches on the dirt cup filter and turning clockwise to lock back into place.
7. Attach the dirt cup filter screen back on to the dirt cup filter by sliding it down over the dirt cup filter, making sure that the tabs on the bottom of the dirt cup filter screen line up with the notches on the dirt cup filter.



2.

3.



4.



Maintenance and care

Cleaning the dirt cup filters continued

8. Insert the dirt cup filter assembly back into the dirt cup by lining up the tabs on the top of the dirt cup filter assembly with the notches inside the top of the dirt cup and turning the handle on the bottom of the dirt cup filter assembly clockwise to lock into place.

Cleaning the pre-motor filter

The pre-motor filter protects the motor from dirt and dust particles. Use only BISSELL replacement filters in your CleanView Compact.

1. Remove the dirt cup from the vacuum, following steps 1-3 of Emptying the dirt cup on page 6.
2. The pre-motor filter is located between the power button and the automatic cord rewind button.
3. The pre-motor filter can be hand washed in cold water with a mild detergent. Rinse well and air dry thoroughly before placing back into the vacuum.

Replacing the post-motor filter

The post-motor filter assists in the filtration process to return cleaner air to the room. Use only BISSELL replacement filters in your CleanView Compact.

1. Unplug the vacuum from electrical outlet.
2. Remove the filter door (located on the back of the vacuum) by pushing down on the tab and pulling out and away from the vacuum.
3. The post-motor filter can be hand washed in cold water with a mild detergent. Rinse well and air dry thoroughly before placing back into the vacuum.
4. Replace the filter door by placing the tabs on the bottom of the filter door into the notches on the bottom of the post-motor filter compartment and pushing the tab forward back into the vacuum to lock into place.

NOTICE:

This product is intended for household use only and not for commercial or industrial use. Vacuuming of dust from products like plaster, concrete or ashes will damage the motor and void the warranty.



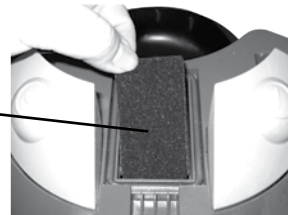
WARNING:

Do not operate cleaner with damp or wet filters or without all filters in place.

Tip:

For maximum cleaning performance, check the filters often and clean or replace if necessary.

3.



Washable
Pre-Motor
Filter

2.



Maintenance and care

Clearing clogs from the dirt cup

1. Unplug the vacuum from electrical outlet.
2. Remove the dirt cup from the vacuum, following steps 1-3 of Emptying the dirt cup on page 6.
3. Remove the dirt cup filter assembly from the dirt cup, following step 2 of Clean the dirt cup filter on page 7.
4. Tap the dirt cup filter assembly over a garbage container to remove any dirt or debris from the dirt cup filter screen that surrounds the dirt cup filter.
5. Reach up into the dirt cup to clear any dirt or debris from the dirt cup.
6. Check to see if there are any clogs in the suction inlet.
7. After clearing any dirt or debris from the dirt cup, replace the dirt cup filter assembly back in the dirt cup following step 8 of Cleaning the dirt cup filter on page 8.



WARNING:

To reduce the risk of electric shock or injury, turn power OFF and disconnect plug from electrical outlet before performing maintenance or troubleshooting.

Troubleshooting

Vacuum cleaner won't run

Possible Cause

1. Vacuum cleaner is not plugged in
2. Power button is not pressed down

Remedy

1. Check electrical plug
2. Press power button down

Vacuum cleaner won't pick up or low suction

Possible Cause

1. Tools, hose and/or extension wands are blocked
2. Filters are dirty
3. Dirt cup is full
4. Hose connector not securely attached to suction inlet
5. Crack or hole in hose
6. Air flow regulator is set to open or minimum setting
7. Clog in the dirt cup

Remedy

1. Remove each part and check for blockages
2. Check and clean or replace all filters
3. Empty dirt cup
4. Make sure hose connector is locked into suction inlet
5. Check hose and replace if needed
6. Change to closed or maximum setting
7. Clear clog from dirt cup following instructions above

Visible dust escaping from vacuum

Possible Cause

1. Dirt cup is full

Remedy

1. Empty dirt cup

Troubleshooting

Visible dust escaping from vacuum continued

Possible causes

2. Filters missing or installed incorrectly
3. Filters are dirty
4. Hose is blocked
5. Hose connector not securely attached to suction inlet
6. Crack or hole in hose

Remedies

2. Check all filters for correct installation
3. Check and clean or replace all filters
4. Remove hose and check for blockages
5. Make sure hose connector is locked into suction inlet
6. Check hose and replace if needed

Other maintenance or service not included in the manual should be performed by an authorized service representative.

Thank you for selecting a BISSELL product

Please do not return this product to the store.

Replacement parts

Item	Part No.	Part Name
1	203-1531	Dirt Cup Filter Screen
2	203-1532	Dirt Cup Filter
3	203-1533	Dirt Cup Filter Frame Base
4	203-1534	Pre-Motor Filter
5	203-1535	Post-Motor Filter
6	203-1536	Floor Nozzle
7	203-1537	Hose with Handle
8	203-1538	Extension Wands (2)
9	203-1539	Combination Crevice Tool/Dusting Brush



Warranty - BISSELL CleanView Compact

This warranty gives you specific legal rights, and you may also have other rights which may vary from country to country. If you need additional instruction regarding this warranty or have questions regarding what it may cover, please contact BISSELL Consumer Services by E-mail, telephone, regular mail as described below, or contact your local in country distributor.

Limited One Year Warranty

Subject to the *EXCEPTIONS AND EXCLUSIONS identified below, BISSELL Homecare, Inc. will repair or replace (with new or remanufactured components or products), at BISSELL's option, free of charge from the date of purchase by the original purchaser, for one year any defective or malfunctioning part due to manufacturer defect.

See "BISSELL Consumer Services" information below.

This warranty applies to product used for personal, and not commercial or rental service. This warranty does not apply to fans or routine maintenance components such as filters, belts, or brushes. Damage or malfunction caused by negligence, abuse, neglect, unauthorized repair, or any other use not in accordance with the User's Guide is not covered.

BISSELL Consumer Service:

If your BISSELL product should require service or if you need information about repairs, authorized service centers in your area, replacement parts or your warranty, please contact BISSELL Consumer Services, as indicated below, or contact your local in country distributor.

For UK inquiries:

Monday - Thursday 9 am — 5 pm
Friday 9 am — 4 pm

BISSELL Homecare (Overseas) Inc.

The Boat Yard
105 Straight Road
Old Windsor
Berkshire, SL4 2SE
United Kingdom
Telephone: 0844-888-6644

For spare parts and accessories:

Monday - Friday 9 am — 5:30 pm

Exserve Ltd.

550, Peterborough
Cambridgeshire, PE2 6WH
Telephone: 01733-362415

BISSELL HOMECARE, INC. IS NOT LIABLE FOR INCIDENTAL OR CONSEQUENTIAL DAMAGES OF ANY NATURE ASSOCIATED WITH THE USE OF THIS PRODUCT. BISSELL'S LIABILITY WILL NOT EXCEED THE PURCHASE PRICE OF THE PRODUCT.

*EXCEPTIONS AND EXCLUSIONS FROM THE TERMS OF THE LIMITED WARRANTY

THIS WARRANTY IS EXCLUSIVE AND IN LIEU OF ANY OTHER WARRANTIES EITHER ORAL OR WRITTEN. ANY IMPLIED WARRANTIES WHICH MAY ARISE BY OPERATION OF LAW, INCLUDING THE IMPLIED WARRANTIES OF MERCHANTABILITY AND FITNESS FOR A PARTICULAR PURPOSE, ARE LIMITED TO THE ONE YEAR DURATION FROM THE DATE OF PURCHASE AS DESCRIBED ABOVE.

BISSELL consumer services

If your BISSELL product should require service:

Call BISSELL Consumer Services at the numbers below and we will give you the location of a BISSELL Authorized Service Center in your area. If you have questions about your warranty or need replacement parts please contact the numbers below.

For UK inquiries:

Monday - Thursday 9 am — 5 pm
Friday 9 am — 4 pm

BISSELL Homecare (Overseas) Inc.

The Boat Yard
105 Straight Road
Old Windsor
Berkshire, SL4 2SE
United Kingdom
Telephone: 0844-888-6644

For spare parts and accessories:

Monday - Friday 9 am — 5:30 pm

Exserve Ltd.

550, Peterborough
Cambridgeshire, PE2 6WH
Telephone: 01733-362415

Or visit the BISSELL website - www.bissell.com

When contacting BISSELL, have model number of cleaner available.

Please record your Model Number: _____

Please record your Purchase Date: _____

NOTE: Please keep your original sales receipt. It provides proof of purchase date in the event of a warranty claim. See Warranty on page 11 for details.



Experts In Home Cleaning™

©2011 BISSELL Homecare, Inc.
Grand Rapids, Michigan
All rights reserved. Printed in China
Part Number 110-4316
Rev 12/10
Visit our website at:
www.bissell.com



www.bissell.com

