

BUSH RETRO DISHWASHER

Installation & User Instructions - Please keep for future reference

DWFS124C
DWFS124B
DWFS124R



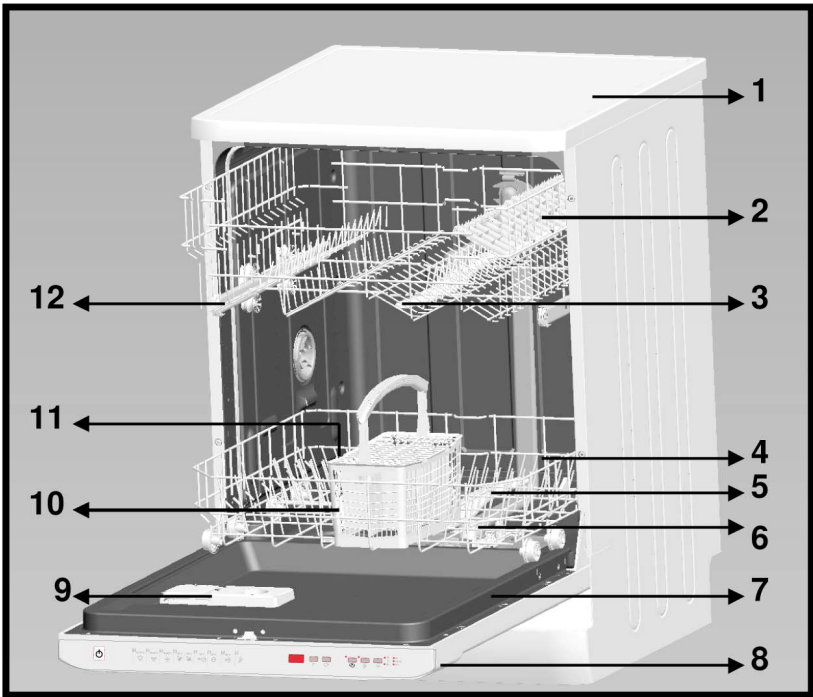
Important – Please read these instructions fully before installing or using

These instructions contain important information which will help you get the best from your appliance and ensure safe and correct installation, use and maintenance. If you need help or have damaged or missing parts, call the **Customer Helpline: 0345 257 7271**

CONTENTS

Technical specifications	4
• Conformity with the standards and Test data	4
Safety information and Recommendations.....	5
• Recycling	5
• Safety information	5
• Recommendations	8
• Items not suitable for dishwashing	9
Installing the machine	9
• Positioning the machine	9
• Water connections	10
• Electrical connection.....	13
• Fitting the machine undercounter	14
• Prior to using the machine	16
Preparing the machine for use	16
• The importance of water decalcification	16
• Filling with salt	16
• Testing strip.....	16
• Adjusting salt consumption.....	18
• Detergent usage	19
• Filling the detergent compartment.....	19
• Combined detergent	19
• Filling with rinse aid and making the setting.....	20

<i>Loading your dishwasher</i>	21
• Top basket.....	21
• Alternative basket loads	24
Programme descriptions	26
• Programme items	26
<i>Getting familiar with your machine</i>	27
<i>Switching on the machine and selecting a programme</i>	28
• Switching on the machine.....	28
• Programme follow-up.....	28
• Changing a programme	28
• Changing a programme with resetting	29
• Switching the machine off	29
<i>Maintenance and Cleaning</i>	30
• Filters	30
• Spray arms	31
• Hose filter	31
Failure codes and what to do in case of failure	32
<i>Practical and useful information</i>	34



- | | | | |
|----|-------------------------|-----|-----------------------------------|
| 1. | Worktop | 7. | Rating plate |
| 2. | Upper basket with racks | 8. | Control Panel |
| 3. | Upper spray arm | 9. | Detergent and rinse-aid dispenser |
| 4. | Lower basket | 10. | Cutlery basket |
| 5. | Lower spray arm | 11. | Salt dispenser |
| 6. | Filters | 12. | Upper basket track latch |



→ 13

Active Drying Unit: This system provides better drying performance for your dishes.

Customer Helpline: **0345 257 7271**

Technical specifications

Customer Help line 0345 257 7271

Capacity	12 place settings
Height	845 mm
Height (without worktop)	815 mm
Width	596 mm
Depth	598 mm
Net Weight	46 kg
Electricity input	220-240 V, 50 Hz
Total Power	2200 W
Heating Power	2000 W
Pump Power	100 W
Drain Pump Power	30 W
Water supply pressure	0.03 MPa (0,3 bar)-1 MPa (10 bar)
Current	10 A

Producer company has its right to amend design and technical specifications reserved. The machine's service life is 10 years (the duration required to keep spare parts for the machine to fulfil its usage functions).

Conformity with the standards and Test data / EC Declaration of Conformity

All stages related to the machine are executed in accordance with the safety rules provided in all relevant directives of the European Community. 2004/108/EC, 2006/95/EC, IEC 436/DIN 44990, EN 50242

Important Note for User: For softcopy of this user manual, please contact following address:

"dishwasher@standardtest.info". In your e-mail, please provide the model name and serial number (20 digits) which you can find on the appliance door.

SAFETY INFORMATION AND RECOMMENDATIONS

Recycling

- Certain components and the packaging of your machine have been produced from recyclable materials.
- Plastic parts are marked with international abbreviations: (>PE< , >PS< , >POM< , >PP< ,)
- Cardboard parts have been produced from recycled paper and they should be disposed of into waste paper collection containers for recycling.
- Such materials are not suitable for being disposed of into garbage bins. They should be delivered to recycling centres instead.
- Contact relevant centres in order to obtain information on methods and points of disposal.

Safety Information

When you take delivery of your machine

- Check for any damage to your machine or to its packaging. Never start a machine damaged in any way, make sure to contact an authorised service provider.
- Unwrap the packaging materials as indicated and dispose of them in accordance with the rules.

The points to pay attention during machine installation

- Choose a suitable, safe and level place to install your machine.
- Carry out the installation and connection of your machine by following the instructions.
- This machine should be installed and repaired by an authorised service agent only.
- Only original spare parts should be used with the machine.
- Before installing, be sure that the machine is unplugged.

- Check whether the indoor electrical fuse system is connected according to the regulations.
- All electrical connections must match the values indicated on the rating plate.
- Pay special attention and be sure that the machine does not stand on the electricity supply cable.
- Never use an extension cord or a multiple socket for making a connection. The plug should be comfortably accessible after the machine has been installed.
- After installing the machine to a suitable place, run it unloaded for the first time.

In daily use

- This machine is for household use; do not use it for any other purpose. Commercial usage of the dishwasher will void the guarantee.
- Do not get up, sit or place a load on the open door of the dishwasher, it may fall over.
- Never put into the detergent and rinse aid dispensers of your machine anything other than those detergents and rinse aids which are produced specifically for dishwashers. Our company will not be responsible for any damage that might occur in your machine otherwise.
- The water in the machine's washing section is not drinking water, do not drink it.
- Due to danger of explosion, do not put into the machine's washing section any chemical dissolving agents such as solvents.
- Check whether plastic items are heat-resistant before washing them in the machine.

Children should not play with the appliance. Cleaning and user maintenance shall not be made by children without supervision.

- Do not put into your machine those items which are not suitable for dishwashing. Also, do not fill any basket above its capacity. Our company will not be responsible for any scratch or rust to form on the inner frame of your machine due to basket movements otherwise.
- The machine door should not be opened under any circumstances while the machine is in operation, as hot water may splash out. There is also a safety device ensures that the machine stops if the door is opened.
- Do not leave your dishwasher's door open.
- Place knives and other sharp-ended objects in the cutlery basket in a blade-down position.
- If the supply cord is damaged, it must be replaced by the manufacturer, its service agent or similarly qualified persons in order to avoid a hazard.
- This appliance is not intended for use by persons (including - children) with reduced physical, sensory or mental capabilities, or lack of experience and knowledge, unless they have been given supervision or instruction concerning use of the appliance by a person responsible for their safety.

For your children's safety

- After removing the machine's packaging, make sure that the packaging material is out of reach of children.
- Do not allow children to play with or start the machine.
- Keep your children away from detergents and rinse aids.
- Keep children away from the machine while it is open because there may still be residues of cleaning substances inside the machine.
- Be sure that your old machine does not pose any threat to your children. Children are known to have gotten themselves locked in old machines. To ensure such a situation does not happen, break your machine's door lock and tear off the electrical cables.

In case of malfunction

- Any malfunction in the machine should be repaired by qualified persons. Any repair work performed by anyone other than the authorised service personnel will cause your machine to be outside the scope of warranty.
- Prior to any repair work on the machine, be sure that the machine is cut off from the mains. Switch off the fuse or unplug the machine. Do not pull the cable when unplugging. Make sure to turn off the water tap.

Recommendations

- For energy and water saving, remove coarse residues on your dishes before placing the dishes into the machine. Start your machine after having fully loaded it.
- Use the pre-wash programme only whenever necessary.
- Place hollow items such as bowls, glasses and pots into the machine in such a way that they will face down.
- You are recommended not to load into your machine any dishes different or more than indicated.

Items not suitable for dishwashing:

- Cigarette ashes, candle wax, polish, paint, chemical substances, iron-alloy materials;
- Forks, spoons and knives with wooden or bone, or ivory or nacre-coated handles; glued items, items soiled with abrasive, acidic or base chemicals.
- Plastic items that are not heat-resistant, copper or tin-coated containers.
- Aluminium and silver objects (they may discolour, become dull).
- Certain delicate glass types, porcelains with ornamental printed patterns as they fade even after the first wash; certain crystal items as they lose their transparency over time, adhered cutlery that is not heat-resistant, lead crystal glasses, cutting boards, items manufactured with synthetic fibre;
- Absorbent items such as sponges or kitchen rags are not suitable for dishwashing.

INSTALLING THE MACHINE

Positioning the machine

When determining the place to put your machine on, take care to choose a place where you can easily load and unload your dishes.

Do not put your machine in any location where there is the probability for the room temperature to fall below 0°C.

Before positioning, take the machine out of its packaging by following the warnings located on the package.

Position the machine close to a water tap or drain. You need to place your machine, so that its connections will not be altered once they are made.

Do not grip the machine by its door or panel in order to move it.

Take care to leave a certain clearance from all sides of the machine so that you can comfortably move it back and forth during cleaning.

Make sure that the water inlet and outlet hoses do not get squeezed while positioning the machine. Also, make sure that the machine does not stand on the electrical cable.

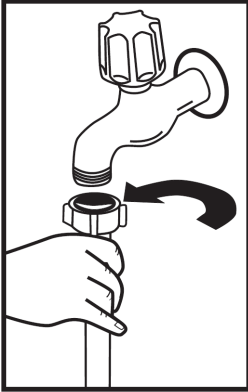
Adjust the machine's adjustable feet so that it can stand level and balanced. Proper positioning of the machine ensures problem-free opening and closing of its door.

If the door of your machine does not close properly, check if the machine is stable on the floor where it stands; if not, adjust the adjustable feet and ensure its stable position.

Water connection

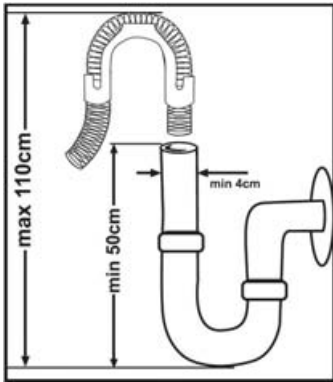
Be sure that the indoor plumbing is suitable for installing a dishwasher.

Water inlet hose



Do not use the water inlet hose of your old machine, if any. Use the new water inlet hose supplied with your machine instead. If you are going to connect a new or long - unused water inlet hose to your machine, run water through it for a while before making the connection. Connect the water inlet hose directly to the water inlet tap. The pressure supplied by the tap should be at a minimum of 0.03 Mpa and at a maximum of 1 Mpa. If the water pressure is above 1 Mpa, a pressure-relief valve should be fitted in between.

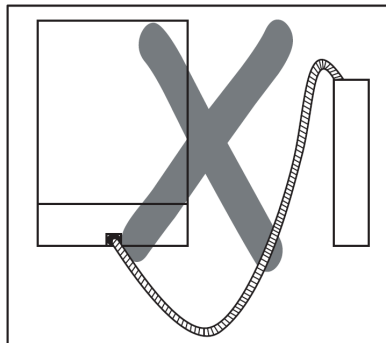
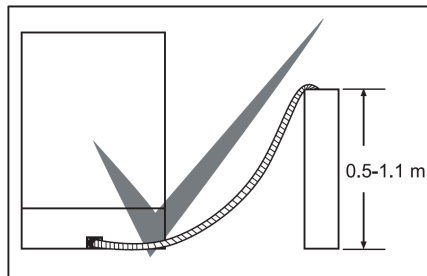
After the connections are made, the tap should be turned on fully and checked for water tightness. For the safety of your machine, make sure to always turn off the water inlet tap after each wash programme is finished.



Water outlet hose

The water drain hose can be connected either directly to the water drain hole or to the sink outlet spigot. Using a special bent pipe (if available), the water can be drained directly into the sink via hooking the bent pipe over the edge of the sink. This connection should be at a minimum of 50 cm and at a maximum of 110 cm from the floor plane.

Warning: When a drain hose longer than 4 m is used, the dishes might remain dirty. In that case, our company will not accept responsibility.



Electrical connection

The earthed plug of your machine should be connected to an earthed outlet supplied by suitable voltage and current. If there is no earthing installation, have a competent electrician carry out an earthing installation. In case of usage without earthing installed, our company will not be responsible for any loss of usage that might occur.

The indoor fuse current value should be 10-16 A.

Your machine is set according to 220-240 V. If the mains voltage in your location is 110 V, connect a transformer of 110/220 V and 3000 W inbetween. The machine should not be plugged in during positioning.

Always use the coated plug supplied with your machine.

Running in low voltage will cause a decline in washing quality.

The machine's electrical cable should be replaced by an authorised service or an authorised electrician only. Failure to do so may lead to accidents.

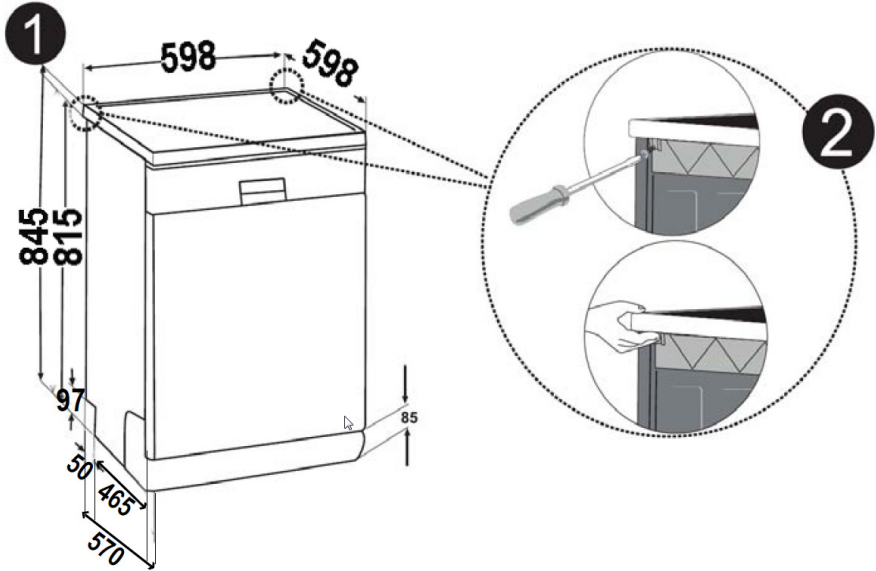
For safety purposes, always make sure to disconnect the plug when a wash programme is finished.

In order not to cause an electric shock, do not unplug when your hands are wet.

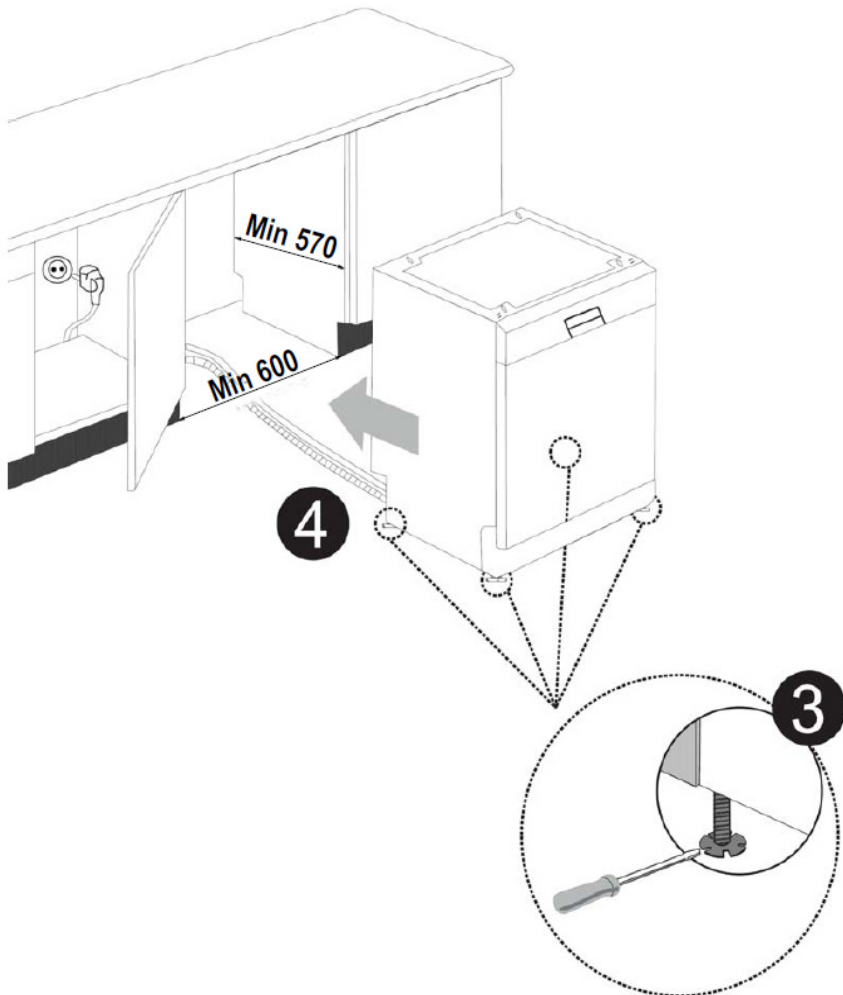
When disconnecting your machine from the mains supply, always pull from the plug. Never pull the cord itself.

Fitting under U counter

If you wish to fit your machine under a counter, check whether you have sufficient space under your countertop and whether the wiring-plumbing is suitable to do so. **1** If you decide that the space under the countertop is suitable for fitting your machine, remove the worktop as shown in the illustration. **2**



Adjust the machine feet according to the slope of the floor.³
Fit your machine by pushing it under the counter without letting the hoses get crushed or bent.⁴



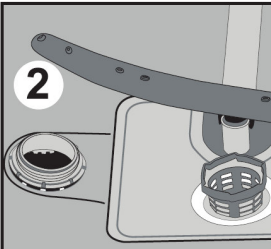
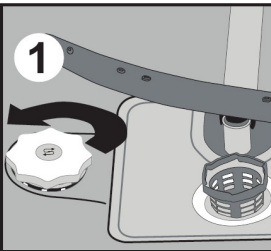
Warning: After removal of worktop, the machine should be placed in such a closed place of which dimensions are shown at fig.

Prior to using the machine for the first time

- Check whether the electricity and supply water specifications match the values indicated by the installation instructions for the machine.
- Remove all packaging materials inside the machine.
- Set the water softener.
- Add 2 kg salt into the salt compartment and fill with water up to a level at which it will almost overflow.
- Fill the rinse aid compartment.

PREPARING THE MACHINE FOR USE**The importance of water decalcification**

For a good washing function, the dishwasher needs soft, i.e. less calcareous water. Otherwise, white lime residues will remain on the dishes and the interior equipment. This will negatively affect your machine's washing, drying and shining performance. When water flows through the softener system, the ions forming the hardness are removed from the water and the water reaches the softness required to obtain the best washing result. Depending on the level of hardness of the inflowing water, these ions that harden the water accumulate rapidly inside the softener system. Therefore, the softener system has to be refreshed so that it operates with the same performance also during the next wash. For this purpose, dishwasher salt is used.

Filling with salt

Use softener salt specifically produced for use in dishwashers. To fill softener salt, first remove the lower basket and then open the salt compartment cap by turning it counter clockwise. (Diagram 1)

At first fill the compartment with 2kg salt and water so it just overflows (Diagrams 2 and 3) the funnel provided will make filling easier. Refit the cap and close it. If the salt warning lamp on the control panel is lit fill the salt compartment with salt again.

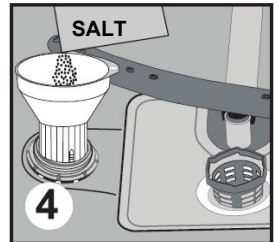
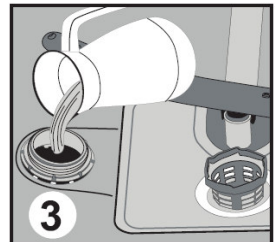
Fill the salt compartment with water on first use only.

If you put a tablet into the salt compartment, do not fill the compartment completely. We recommend that you use small-grained or powder softener salt.

Do not put table salt into your machine, otherwise, the function of the softener

compartment may decrease over time. When you start your dishwasher, the salt compartment gets filled with water. Therefore, put the softener salt prior to starting your machine.

This way, overflowing salt gets immediately cleaned up through the wash operation. If you are not going to wash any dishes immediately after putting in salt, then run a short washing program with an empty machine in order to avoid any damage (to prevent corrosion) to your machine due to the salt overflow while filling in the salt container.



Testing strip

The washing effectiveness of your machine depends on the softness of the tap water. For this reason, your machine is equipped with a system that reduces the hardness in mains water supply. The washing effectiveness will increase when the system is correctly set. To find out the water hardness level of water in your area, contact your local water company or determine the water hardness level by using the test strip(if available).

Open the testing strip.	Run water through your tap for 1 min.	Keep the testing strip in water for 1 sec.	Shake the testing strip after taking it out of water.	Wait for 1 min.	Make your machine's water hardness setting according to the result obtained through the testing strip.
-------------------------	---------------------------------------	--	---	-----------------	--

					Level 1 No Lime Level 2 Very low lime content Level 3 Low lime content Level 4 Medium lime content Level 5 Lime content Level 6 High lime content
--	--	--	--	--	--

Adjusting salt consumption

Table of Water Hardness Level Settings

Water hardness level	British hardness dE	Hardness Level Indicator	Hardness Level Indicator			
			P1	P2	P3	P4
1	0-6	P1 led is on.	●	○	○	○
2	7-14	P2 led is on.	○	●	○	○
3	15-21	P3 leds is on.	○	○	●	○
4	22-28	P4 led is on.	○	○	○	●
5	29-39	P1 –P4 leds are on.	●	○	○	●
6	40-63	P2 – P4 leds are on.	○	●	○	●

NOTE: Hardness level is adjusted to level 3 as a factory setting.

Adjusting salt consumption

Adjust the water softener according to how hard your tap water is.



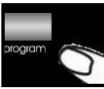
After resetting your machine, press the program selector button and keep it pressed down.



Meanwhile, turn on the machine by pressing the Power On/Off button. **1**



Keep the program selection button pressed until the LEDs "P1-P2-P3-P4-end of program indicator" flash. **3**



After the LEDs "P1-P2-P3-P4-end of program indicator" have flashed **2**, release the program selector button. **3**

Your machine displays the latest entered water hardness setting.



You can adjust the levels by program selector button **3** according to *Table of Water Hardness Level Settings*.



After adjusting the water hardness level, press on/off button to save the settings in memory. **1**

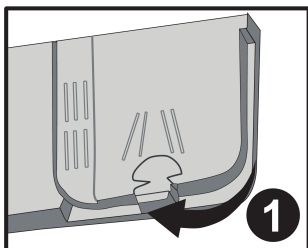
Detergent usage

Use a detergent specifically designed for use in domestic dishwashers. You can find powder, gel, and tablet detergents in the market that have been designed for household dishwashers.

Detergent should be put into the compartment prior to starting the machine. Keep your detergents in cool, dry places out of reach of children.

Do not fill detergent into the detergent compartment more than required; otherwise it may cause scratches on your glasses as well as lead to a poorly dissolved detergent.

Should you need more information concerning the detergent you will use, contact the detergent manufacturer directly.

**Filling the detergent compartment**

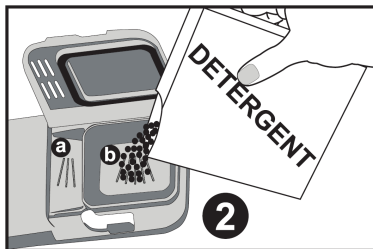
Push the latch to open the detergent container as shown in the image. The detergent pod has level lines inside. It is possible to measure the right detergent amount using these lines.

The detergent pod can take a maximum of 40 cm³ detergent.

Open the dishwasher detergent and pour into the larger compartment 25 cm³ if your dishes are heavily soiled or 15

cm³ if they are less soiled. 2 If your dishes have been kept dirty for a very long time, or if there is dried food waste on them, or if you have fully loaded the dishwasher, pour 5 cm³ detergent into the pre-wash compartment and start your machine.

You may have to add more detergent into your machine, depending on the degree of soil and on the water hardness level in your area.

**Combined detergents**

Detergent manufacturers also manufacture combined detergents that are called 2 in 1 – 3 in 1-5 in 1 etc ...

Generally, combined detergents produce sufficient results under certain usage conditions only. Such detergents contain rinse aid and/or salt in preset amounts.

Points to consider when using this type of product:

- Always make sure to check the specifications of the product you will use or whether or not it is a combined product.
- Check if the detergent used is appropriate for the hardness of mains water that the machine is connected to.
- Observe the instructions on the packaging when using such products.
- If such detergents are in the form of tablets, never put them into the interior section or the cutlery basket of the dishwasher. Always put the tablets into the detergent compartment in the detergent dispenser.

- They produce good results for certain types of usage only. If you are using this type of detergent, you need to contact the manufacturers and find out about the suitable conditions of use.
- When the conditions of use of such products and the machine settings are appropriate, they ensure savings in salt and/or rinse aid consumption.
- Contact the detergent manufacturers if you are not obtaining good wash results (if your dishes stay calcareous and wet) after having used 2 in 1 or 3 in 1 detergents. The scope of warranty for your machine does not cover any complaints caused by the use of these types of detergents.

Recommended usage: If you want to obtain better results while using combined detergents, add salt and rinse aid into your machine and adjust the water hardness setting and the rinse aid setting to the lowest position.

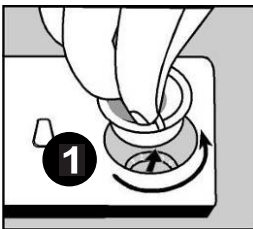
! Solubility of the tablet detergents produced by different companies can vary depending on the temperature and time. Therefore, it is not recommended to use such detergents in short programs. It is more suitable to use powder detergents in such programs.

Warning: Should any problem, which you have not encountered before, arise with the use of this type of detergents, contact the detergent manufacturer directly.

If you stop using combined detergents

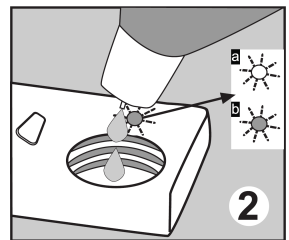
- Fill the salt and rinse aid compartments.
- Adjust the water hardness setting to the highest position and run an empty-wash.
- Adjust the water hardness level.
- Make the suitable rinse aid setting.

Filling with rinse aid and making the setting.



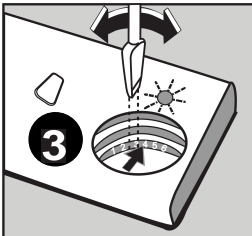
To add rinse aid, remove the rinse aid compartment cap by turning it. **1** Fill the rinse aid compartment with rinse aid until the rinse aid level indicator becomes dark;

refit the cap and close it by turning it in a way that the nails will correspond to one another. By checking the rinse aid level indicator on the detergent dispenser, you can understand whether or not your machine needs rinse aid. A dark indicator **b** means that there is rinse aid in the compartment, while a light indicator **a** shows that you need to fill the compartment with rinse aid.



The rinse aid level adjuster can be set to a position between 1 and 6. Factory setting for rinse aid is the position 3.

You need to increase the degree of the adjuster if water stains form on your dishes after a wash, whereas you need to decrease the degree if a blue stain is left when wiped by hand. **3**



Warning: Use only those rinse aid materials which are allowed for use in the machine. As rinse aid residues left as a result of overflowing will create extremely high amounts of foam and thus reduce the washing performance, remove the excess amount of rinse aid by wiping it with a rag.

LOADING YOUR DISHWASHER

If you properly place your dishes into the machine, you will be using it in the best way in terms of energy consumption, washing and drying performance.

There are two separate baskets for you to load your dishes into your machine. You can load into the lower basket such round and deep items as pots with long handles, pot lids, plates, salad plates, cutlery sets.

The upper basket has been designed for tea plates, dessert plates, salad bowls, cups and glasses. When placing long-stem glasses and goblets, lean them against the basket edge, rack or glass supporter wire and not against other items. Do not lean long glasses against one another or they cannot remain steady and may get damaged.

It is more appropriate to locate the thin narrow parts into the middle sections of baskets.

You can place spoons among the other cutlery sets in order to prevent them from sticking to one another. You are recommended to use the cutlery grid in order to obtain the best result. To avoid any possible injuries, always place such long-handle and sharp-pointed items such as serving forks, bread knives etc. with their sharp ends facing down or horizontally on the baskets.

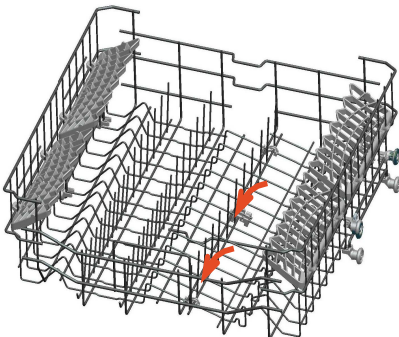
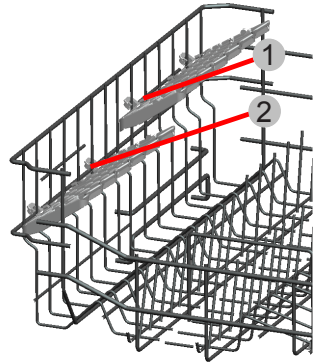
Warning: Place your dishes into your machine in a way that they will not prevent the upper and lower spray arms from spinning.

Top basket

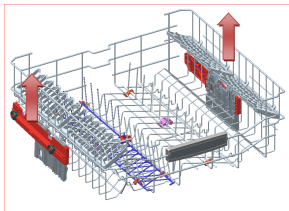
Height Adjustable Rack

These racks are designed to increase the capacity of the top basket. You can place your glasses and cups on the racks. You can adjust the height of these racks. Thanks to this feature, you can place different sizes of glasses under these racks.

Thanks to height adjustment plastics mounted on the basket, you can use your racks in 2 different heights. In addition, you can place long forks, knives and spoons on these racks laterally, so that they do not block the spinning arms revolution of propeller.

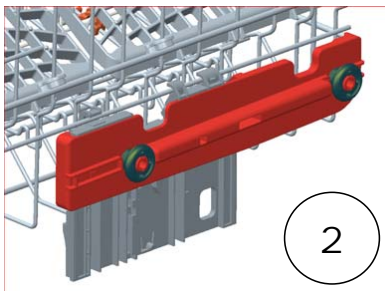
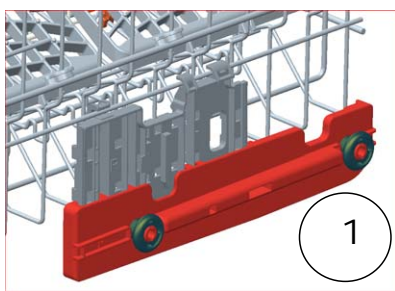


Foldable racks on the upper basket are designed in order to let you place big items easier such as pots, pans, etc. If requested, each part can be folded separately, or all of them can be folded and larger spaces can be obtained. You can use foldable racks by raising them upwards, or by folding down.

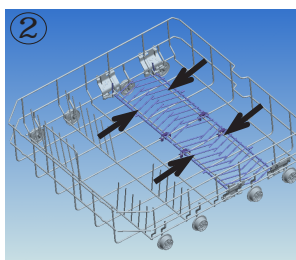
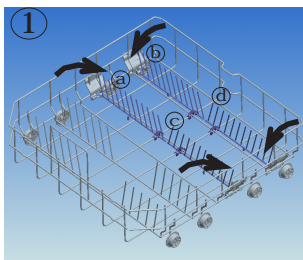
Top basket height adjustment while it is full

Basket height adjustment mechanism on the top basket of your machine is designed to let you adjust the height of your top basket upwards or downwards, without removing it from your machine when it is full, and create large spaces at the top or bottom area of your machine as needed. The basket of your machine is set to the upper position in factory settings. In order to raise your basket, hold it from both sides and pull it upwards. In order to lower it, hold it from both sides again, and lower downwards.

Please make sure that both sides of the mechanism are in the same position (up or down).

**Lower Basket Folding Racks**

Folding racks consisting of four parts that are located on the lower basket of your machine and are designed in order to let you place big items easier such as pots, pans, etc. If requested, each part can be folded separately, or all of them can be folded and larger spaces can be obtained. You can use folding racks by raising them upwards, or by folding.

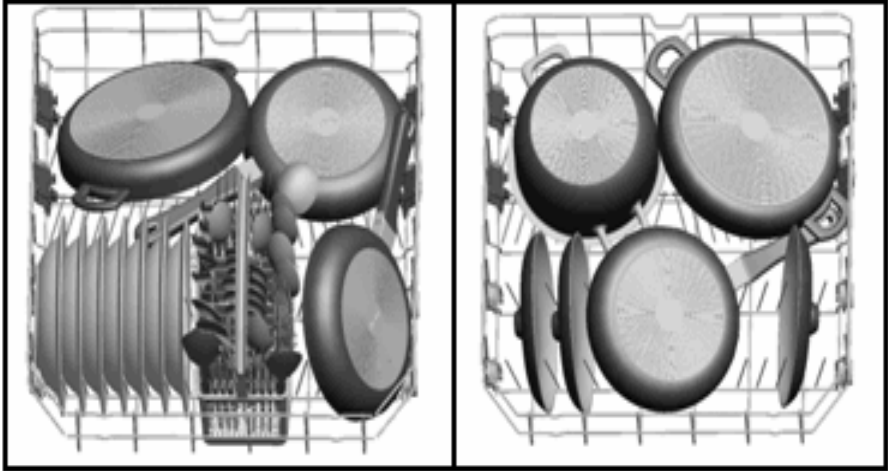


The movable cutlery basket, thanks to its special design, can be slid between the front and rear wires of the bottom basket. Thanks to this feature of the movable cutlery basket and depending on the position of the bottom basket, the cutlery basket can be placed at the desired location.

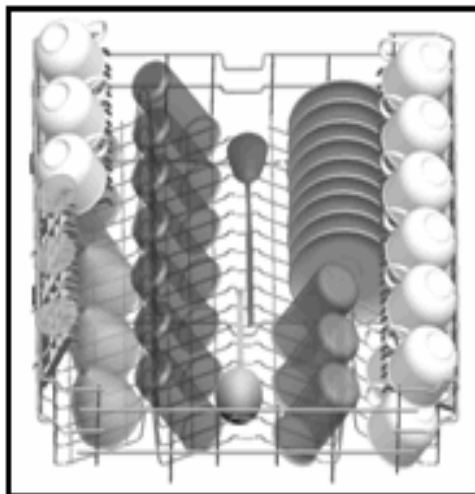


Alternative basket loads

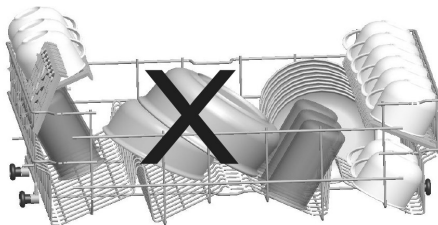
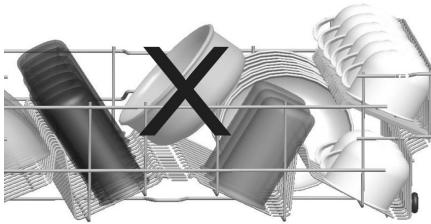
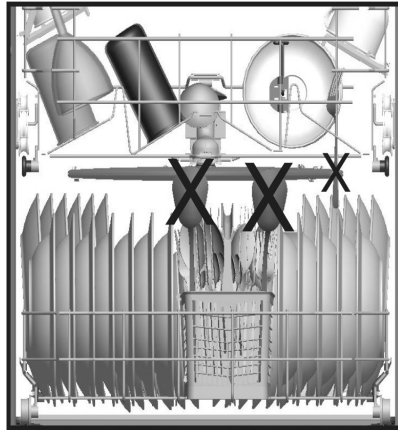
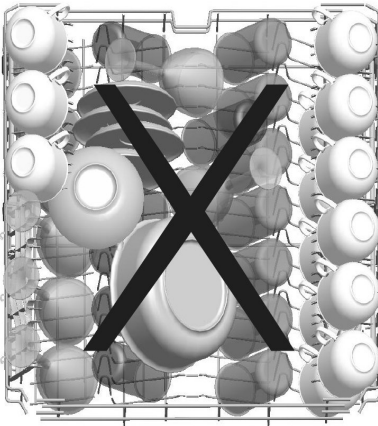
Lower Basket



Top basket



Faulty loads



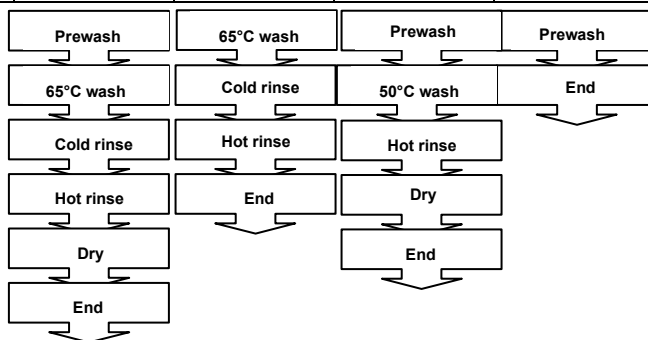
Important Note for Test Laboratories

For detailed information on performance tests, please contact following address: "dishwasher@standardtest.info". In your email, please provide the model name and serial number (20 digits) which you can find on the appliance door.

PROGRAMME DESCRIPTIONS

Programme items

Programme No			Reference	
Programme names and temperatures	Intensive (P1) 65°C	Normal 50 min. (P2) 65°C	Eco (P3) 50°C	Prewash (P4) No Heat
Type of food waste	soups, sauces, pasta, eggs, pilaf, potato and oven dishes, fried foods	coffee, milk, tea, cold meats, vegetables, not kept for long	coffee, milk, tea, cold meats, vegetables, not kept for long	Pre-wash to rinse and loosen residue-awaiting full load-then select a programme
Level of soil	high	medium	medium	-
Detergent amount B: 25 cm ³ / 15 cm ³ A: 5 cm ³	A+B	A+B	A +B	-



Programme duration (min.)	110	50	160	15
Electricity consumption (kW hours)	1,55	1,35	1,00	0,02
Water consumption (liters)	17,2	12,7	12,0	4,5

Warning: Short programs do not include a drying step.

The values declared above are the values obtained under laboratory conditions according to relevant standards. These values can change depending on conditions of product's use and environment (network tension, water pressure, water input temperature and environment temperature).

GETTING FAMILIAR WITH YOUR MACHINE



1.) Power On/Off Button

When the Power On/Off button is pressed, end of program indicator starts lighting.

2.) Programme selector button

With the program selector button, you can select a suitable program for your dishes.

3.) Salt Warning Indicator

If this LED is lit, the level of salt has fallen below the minimum level. Refill the salt in the salt chamber.

Rinse aid Warning Indicator

If this LED is lit, the rinse aid level has fallen below the minimum amount. Refill the rinse aid chamber.

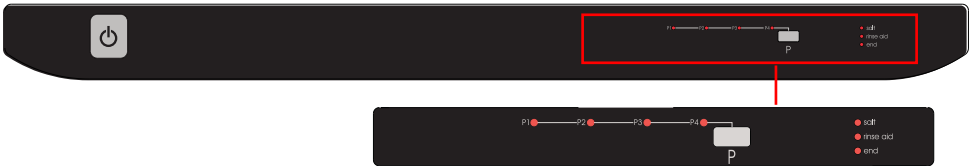
End of Program Indicator

End of program indicator on the control panel turns on when the selected washing program is completed. Your machine also gives an audible warning when the program is completed.

SWITCHING ON THE MACHINE AND SELECTING A PROGRAMME

Switching on the machine

When you select a program with the program selection button, the light of the selected program turns on and the end of program indicator turns off.



Once the power on/off key is pressed, the end of program indicator turns on.

1. Press the Power On/Off key.
2. Select the program suiting your dishes via the Program Selection button.
3. Close door. The program starts automatically.

Note: If you decide not to start the machine after selecting the program, just press the on/off button. Your machine will become ready for the new program selection when you press the on/off button again. You can select the new program by pressing the program selection button.

Program follow-up

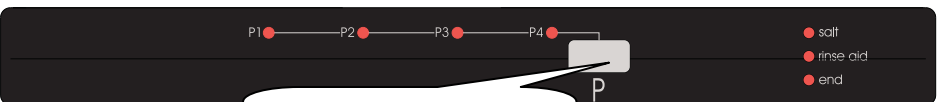


Do not open the door before the program ends.

End of program indicator on the control panel turns on when the selected washing program is completed. Your machine also gives a **buzzer sound "5 times"** when the program is completed.

Changing a programme

If you would like to change programs while a washing program is working.



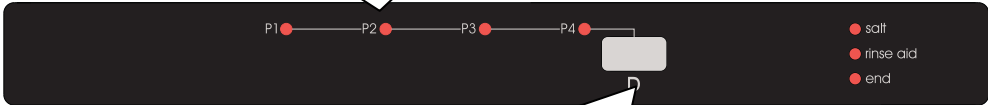
After closing the door, the new program will resume the course of the old program.

Open the door and select a new program by pressing the program selection button.

Note: When the door of the machine is opened in order to stop the washing program before it is completed, first open the door slightly in order to avoid water spillage.

Changing a programme by resetting

Open the door of your machine.
The light of the last selected program will turn on.



Keep the program selection button pressed for 3 seconds. (End of program indicator flashes and program light turns off)

The discharge process starts after closing the door of the machine. The machine discharges the water in it for about 30 seconds. When the program is cancelled, your machine gives a **buzzer sound** "5 times" and the "end of program indicator" turns on.

Note: When the door of the machine is opened in order to stop the washing program before it is completed first open the door slightly in order to avoid water spillage.

Switching the machine off



When the end of the program indicator turns on, switch your machine off by using the Power On/Off button.

Pull the plug out of the outlet.
Turn off the water tap.

NOTE: After the **buzzer sound** which indicates the end of the program when the washing program comes to an end (end indicator light is on), you can leave the door of your machine ajar in order to hasten the drying.

Note: If the machine door opens during washing or the power is cut off, the machine will restart the program when the door is reshut or the power is back on.

Note : If the energy is cut or machine door is opened during the drying process, the program finishes. Your machine becomes ready for new a program selection.

MAINTENANCE AND CLEANING

Cleaning the machine in regular intervals prolongs the machine's service life.

Oil and lime may accumulate in the machine's washing section. In case of such accumulation;

-Fill the detergent compartment without loading any dishes into the machine, select a programme that runs at high temperature, and start the machine. If this isn't enough, use special cleansing products in the market. (Cleansing material produced special to machines by detergent producers.)

Cleaning the seals in the machine door,

-To clean any accumulated residues in the door seals, wipe the seals regularly by using a damp cloth.

Cleaning machine,

Clean the filters and spray arms at least once a week.

Unplug your machine and turn off its tap before starting the clean.

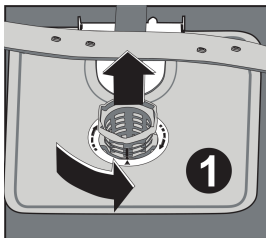
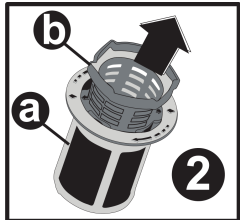
Do not use hard materials when cleaning your machine. Wipe with a fine cleaning material and a dampened cloth.

Filters

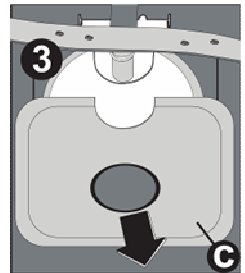
Check if any food wastes have remained on the coarse and fine filters.

If any food wastes are left, remove the filters and clean them thoroughly under a tap.

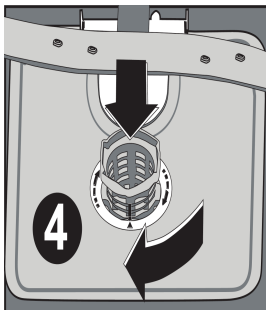
- a. Micro Filter
- b. Coarse Filter
- c. Metal/Plastic Filter



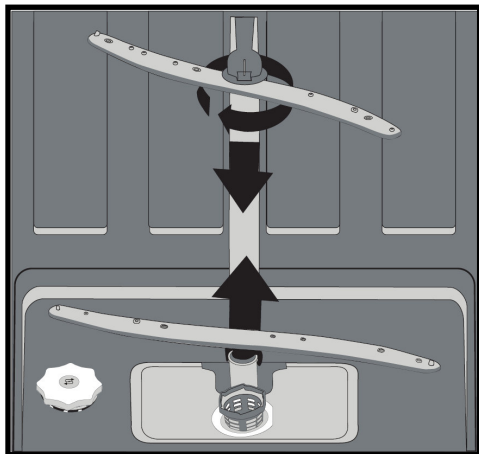
To remove and clean the filter combination, turn it counter-clockwise and take it out by lifting upwards. **1**



Pull and remove the metal/plastic filter. **3** Then pull the coarse filter out of the micro filter. **2** Rinse it with lots of water under the tap. Refit the metal/plastic filter. Insert the coarse filter into the micro filter in a way that the marks will correspond to one another. Attach micro filter into the metal/plastic filter and turn to the direction of arrow and it is locked when the arrow on micro filter can be seen from across. **4**



- Never use your dishwasher without any filter.
- Incorrect fitting of the filter will reduce the washing effectiveness.
- Clean filters are very important in terms of the proper running of the machine.



Spray arms















Check whether or not the holes for the upper and lower spray arms are clogged. If there is any clogging, remove the spray arms and clean them under water.

You can remove the lower spray arm by pulling it upwards, while the upper spray arm nut can be removed by turning the nut to the left. Be sure that the nut is perfectly tightened when refitting the upper spray arm.

Hose filter

Water is filtered by the inlet hose filter so as to avoid any damage to your machine because of any contamination (sand, clay, rust etc.) that might be occasionally carried in through the mains water supply or the indoor plumbing, and to minimise such complaints as yellowing and formation of deposits after washing. Check the filter and the hose from time to time and clean them if necessary. To clean the filter, first turn off your tap and then remove the hose. After removing the filter from the hose, clean it under the tap. Insert the clean filter back into its place inside the hose. Refit the hose.

FAILURE CODES AND WHAT TO DO IN CASE OF FAILURE

ERROR CODE				ERROR DESCRIPTION	CONTROL
P1	P2	P3	P4		
				Inadequate water supply	<ul style="list-style-type: none"> • Make sure the water input tap is totally open and that there is no water cut. • Close the water input tap, separate the water input hose from the tap and clean the filter at the connection end of the hose. • Restart your machine, contact the service if the error resumes.
				Error of continuous water input	<ul style="list-style-type: none"> • Close the tap. • Contact a service agent.
				The waste water in the machine cannot be discharged.	<ul style="list-style-type: none"> • Water discharge hose is clogged. • The filters of your machine might be clogged. • Power off-on your machine and activate the program cancellation command. • If the error continues, contact a service agent.
				Intended water temperature could not be reached faulty heater and heater sensor	Contact a service agent.
				Alarm is active against water overflow	<ul style="list-style-type: none"> • Power off your machine and close the tap. • Contact a service agent.
				Faulty electronic card	Contact a service agent.

If the programme won't start

- Check if the plug is connected.
- Check your indoor fuses.
- Be sure that the water inlet tap is turned on.
- Be sure that you have closed the machine door.
- Be sure that you switched off the machine by pressing the Power On / Off button.
- Be sure that the water inlet filter and the machine filters are not clogged.

If detergent residues are left in the detergent compartment

Detergent has been added when the detergent compartment was wet.

If water is left inside the machine at the end of the programme

- The water drain hose is clogged or twisted.
- The filters are clogged.
- The programme is not finished yet.

If the machine stops during a wash operation

- Power failure.
- Water inlet failure.

If shaking and hitting noises are heard during a wash operation

- Dishes placed incorrectly.
- Spray arm hitting the dishes.

If there are partial food wastes left on the dishes

- Dishes placed incorrectly into the machine, sprayed water did not reach related places.
- Basket overloaded.
- Dishes leaning against one another.
- Very small amount of detergent added.
- An unsuitable, rather weak wash programme selected.
- Spray arm clogged with food wastes.
- Filters clogged.
- Filters incorrectly fitted.
- Water drain pump clogged.

If there are white looking stains on the dishes

- A very small amount of detergent is being used.
- Rinse aid dosage setting at a very low level.
- No special salt is being used despite the high degree of water hardness.
- Water softener system setting is at a very low level.
- Salt compartment cap not closed well.

If the dishes won't dry

- A programme without a dry operation selected.
- Rinse aid dosage set too low
- Dishes unloaded too fast.

If there are rust stains on the dishes

- Stainless-steel quality of the dishes washed is insufficient.
- High rate of salt in the wash water.
- Salt compartment cap not closed well.
- Too much salt spilt into the sides and into the machine while filling it with salt.
- Unhealthy mains grounding.

PRACTICAL AND USEFUL INFORMATION

1. Whenever you will not be operating your machine
 - Unplug the machine and then turn the water off.
 - Leave the door slightly ajar in order to prevent the formation of unpleasant smells.
 - Keep the machine interior clean.
2. Eliminating water droplets
 - Wash the dishes with the intensive programme.
 - Take all of the metal containers in the machine out.
 - Do not add detergent.
3. If you properly place your dishes into the machine, you will be using it in the best way in terms of energy consumption, washing and drying performance.
4. Clean all rough waste before you place dirty dishes to the machine.
5. Operate the machine when it is completely full.
6. Use pre-washing program only when necessary.
7. Observe program information and average consumption values table when selecting a program.
8. Since the machine will reach high temperatures, it should not be placed near a refrigerator.
9. If the appliance is located in a place where the risk of freezing exists, you must completely drain the water that has remained in the machine. Turn off the water tap, disconnect the water inlet hose from the tap and allow the interior water to drain.

THE PRODUCT FICHE (Spect)

Supplier's trade mark	BUSH
Supplier's model	DWFS124C/B/R
Capacity of dishwasher	12
The energy efficiency class	A+
Annual energy consumption in kWh per year (AEC) (280 Cycle)*	285
Energy consumption (E _c) (kWh per cycle)	1,00
Off-mode power consumption (W) (P _o)	0,05
Left-on mode power consumption (W) (P _i)	1,00
Annual water consumption in litres per year (AW _c) (280 Cycle) **	3360
Drying efficiency class ***	A
Standard programme name ****	Eco 50 °C
Programme time for standard cycle (min)	160
Noise dB(A)	52

* Energy consumption **285** kwh per year, based on 280 standard cleaning cycles using cold water fill and the consumption of low power modes. Actual energy consumption will depend on how the appliance is used.

** Water consumption **3360** liters per year based on 280 standard cleaning cycles. Actual water consumption will depend on how appliance is used.

***Drying efficiency class **A** on a scale from G(least efficient) to A (most efficient).

**** The "**Eco 50 °C**" is the standard cleaning cycle to which the information in the label and the fiche relates. This programme is suitable to clean normally soiled tableware and it is the most efficient programme in terms of combined energy and water consumption.

The Argos logo consists of the word "Argos" in a white, sans-serif font, positioned above a white, curved line that resembles a smile. The entire logo is set against a dark grey rectangular background.

Product Guarantee

This product is guaranteed against manufacturing defects for a period of



This product is guaranteed for twelve months from the date of original purchase. Any defect that arises due to faulty materials or workmanship will either be replaced, refunded or repaired free of charge where possible during this period by the dealer from whom you purchased the unit.

The guarantee is subject to the following provisions:

- The guarantee does not cover accidental damage, misuse, cabinet parts, knobs or consumable items.
- The product must be correctly installed and operated in accordance with the instructions contained in this manual.
- It must be used solely for domestic purpose.
- The guarantee will be rendered invalid if the product is re-sold or has been damaged by inexperienced repair.
- Specifications are subject to change without notice.
- The manufacturer disclaims any liability for the incidental or consequential damages.
- The guarantee is in addition to, and does not diminish your statutory or legal rights.
- In the event of a problem with the product within the guarantee period call the **Customer Helpline: 0345 257 7271**.

Guarantor: Argos Ltd
489 - 499 Avebury Boulevard
Central Milton Keynes
MK9 2NW