

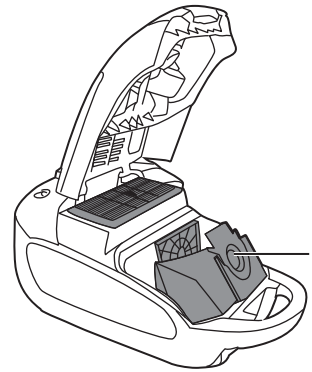
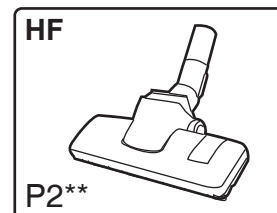
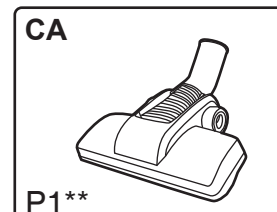
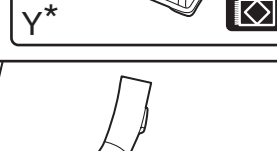
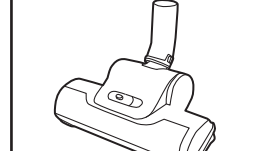
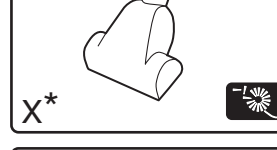
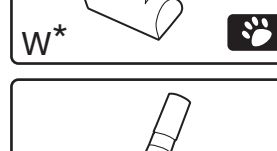
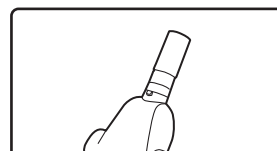
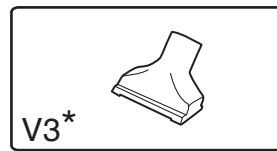
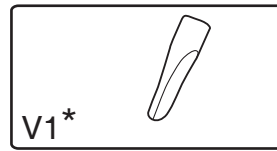
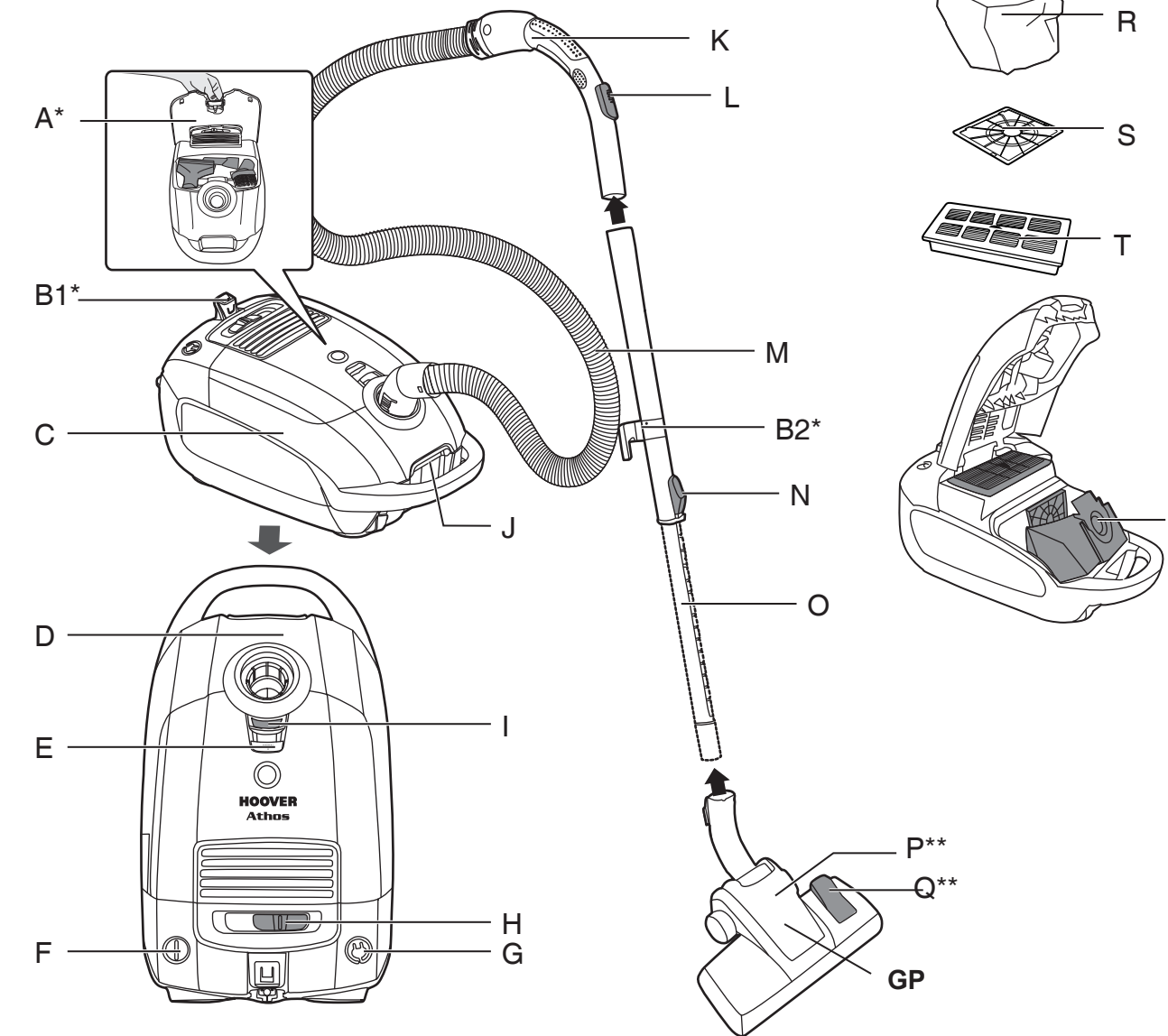


HOOVER

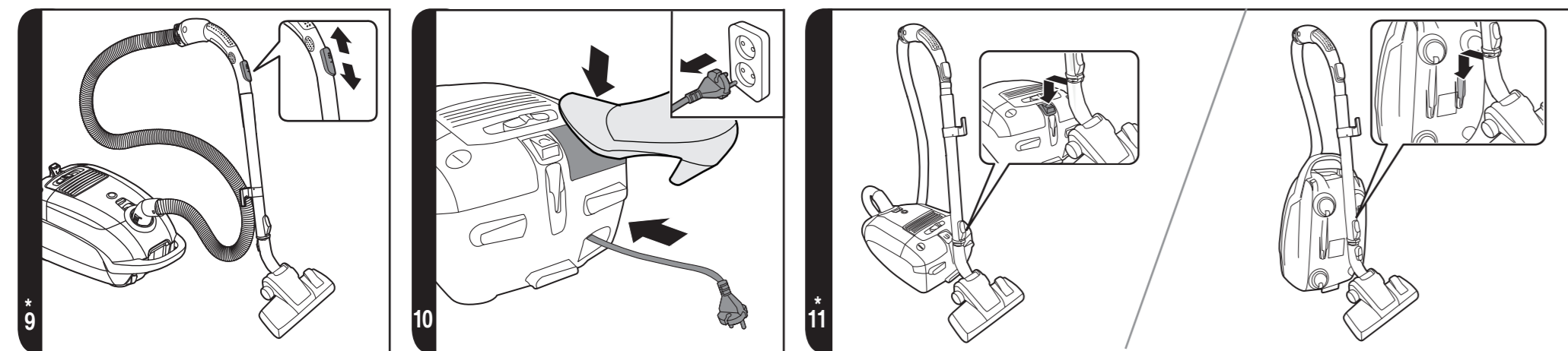
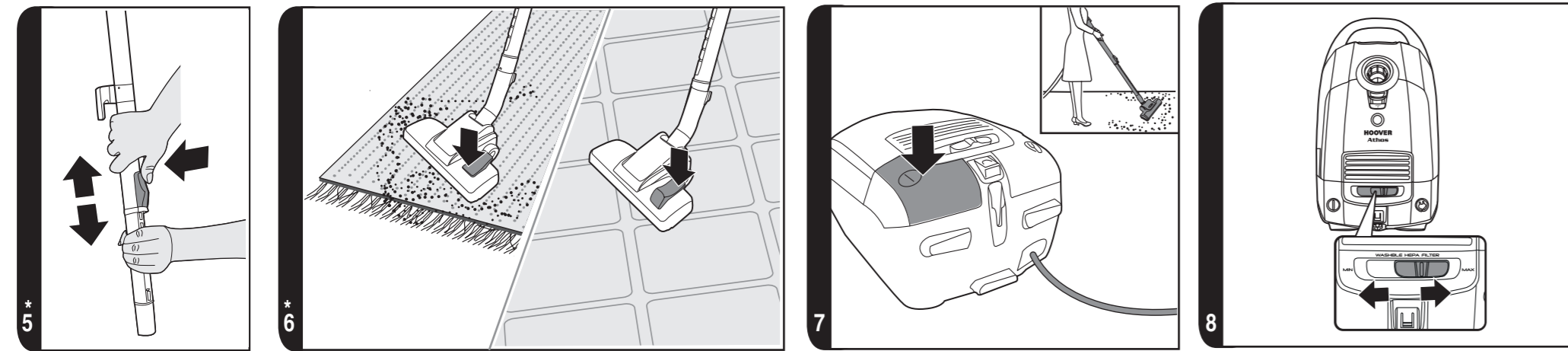
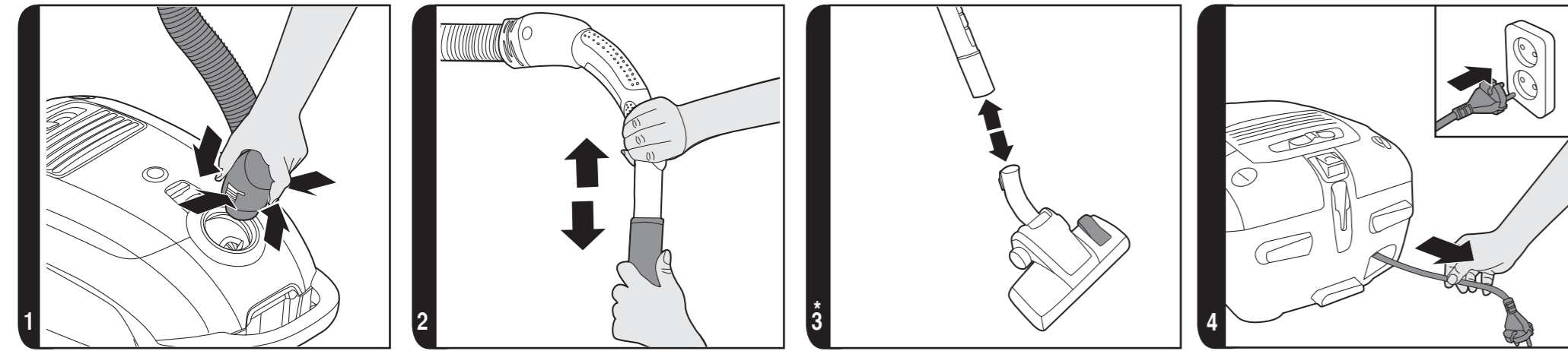


USER MANUAL

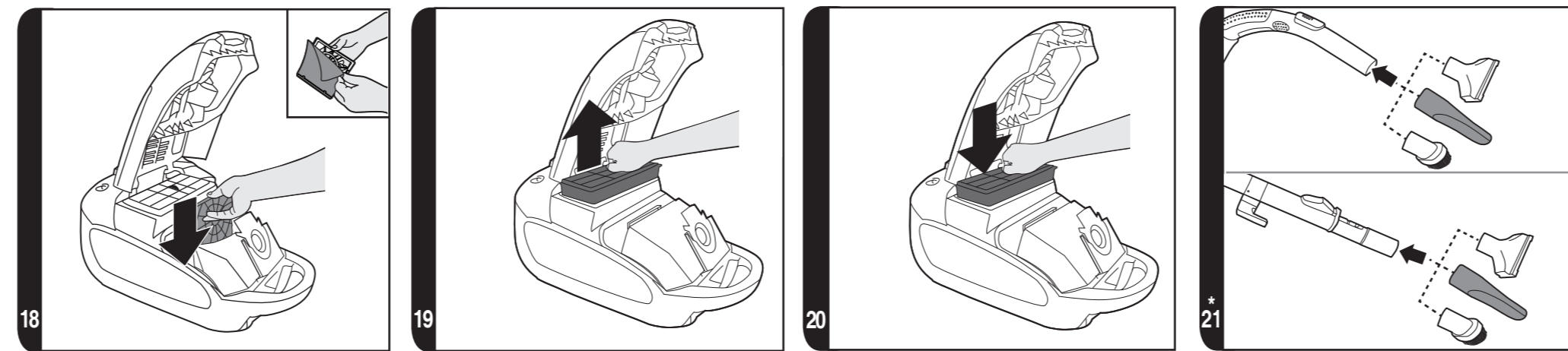
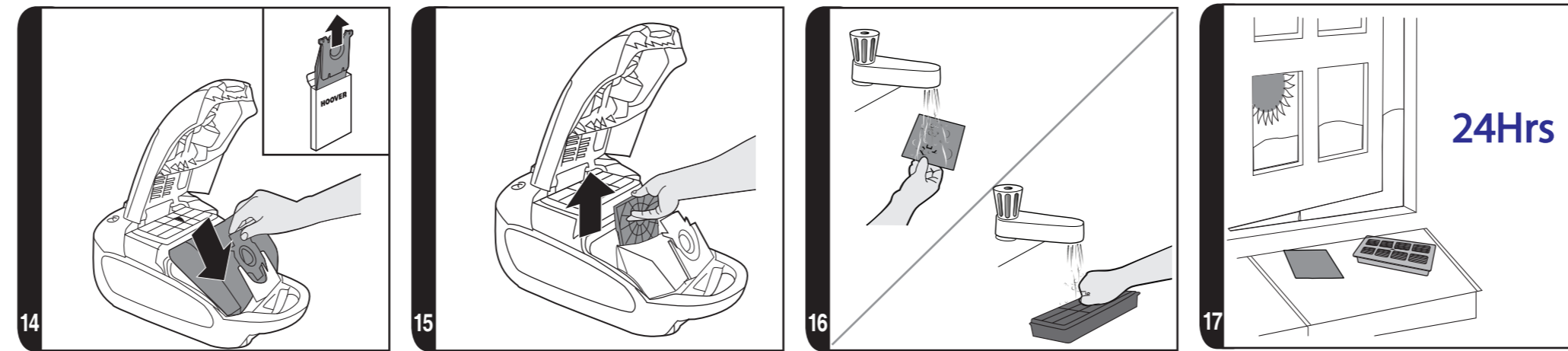
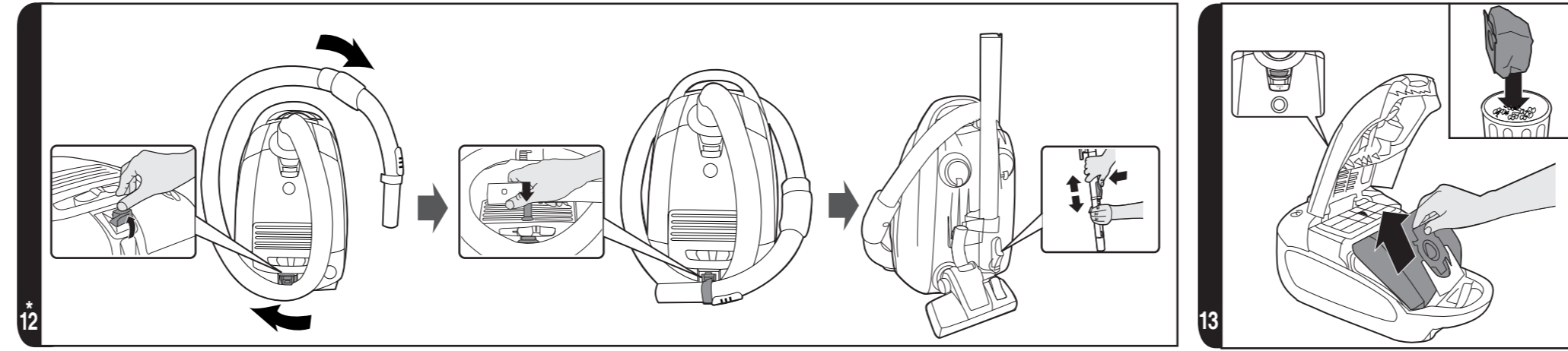
PRINTED IN P.R.C.
48014491



* Certain models only ** Certain models only, nozzles may vary according to model



* Certain models only ** Certain models only, nozzles may vary according to model



* Certain models only ** Certain models only, nozzles may vary according to model

INSTRUCTIONS FOR SAFE USE

This appliance should only be used for domestic cleaning, as described in this user guide. Please ensure that this guide is fully understood before operating the appliance.

Do not leave the appliance plugged in. Always switch off and remove the plug from the socket after use, or before cleaning the appliance or any maintenance task.

This appliance can be used by children aged from 8 years and above and persons with reduced physical, sensory or mental capabilities or lack of experience and knowledge if they have been given supervision or instruction concerning use of the appliance in a safe way and understand the hazards involved. Children shall not play with the appliance. Cleaning and user maintenance shall not be made by children without supervision.

If the power cord is damaged stop using the appliance immediately. To avoid a safety hazard, an authorised HOOVER service engineer must replace the power cord.

Keep hands, feet, loose clothing and hair away from rotating brushes.

Use only attachments, consumables or spares recommended or supplied by HOOVER.

Static electricity: Some carpets can cause a small build up of static electricity. Any static discharge is not hazardous to health.

Do not use your appliance out of doors or on any wet surface or for wet pick up.

Do not pick up hard or sharp objects, matches, hot ashes, cigarette ends or other similar items.

Do not spray with or pick up flammable liquids, cleaning fluids, aerosols or their vapours.

Do not run over the power cord when using your appliance or remove the plug by pulling on the power cord.

Do not continue to use your appliance if it appears faulty.


HOOVER service: To ensure the continued safe and efficient operation of this appliance we recommend that any servicing or repairs are only carried out by an authorised HOOVER service engineer.

Do not stand on or wrap the cord around arms or legs when using your appliance.

Do not use the appliance to clean animals or people.

Do not position the appliance above you when cleaning the stairs.

The Environment

The symbol on this appliance indicates that this appliance may not be treated as household waste. Instead it must be handed over to the applicable collection point for the recycling of electrical and electronic equipment. Disposal must be carried out in accordance with local environmental regulations for waste disposal.  For more detailed information about treatment, recovery and recycling of this appliance, please contact your local city office, your household and waste disposal service or the shop where you purchased the appliance.

 This appliance complies with the European Directives 2006/95/EC, 2004/108/EC and 2011/65/EU.

HOOVER Limited, Pentrebach, Merthyr Tydfil, Mid Glamorgan, CF48 4TU, UK

GETTING TO KNOW YOUR CLEANER

- | | |
|-----------------------------------|--|
| A. Accessory Door* | P1. Carpet Nozzle (CA)** |
| B1. Hose Holder* | P2. Hard Floor Nozzle (HF)** |
| B2. Tube Holder* | Q. Floor type selector* |
| C. Main Cleaner | R. Bag |
| D. Bag Door | S. Pre-motor Filter |
| E. Accessory Door Latch | T. Exhaust Filter |
| F. On/Off Pedal | U. Bag holder |
| G. Cord Reel Pedal | V. Accessories: |
| H. Variable Power Control Slider | V1. Crevice Tool* |
| I. Bag Check Indicator | V2. Dusting Brush* |
| J. Bag Door Latch | V3. Furniture Nozzle* |
| K. Hose Handle | W. Pet Hair Remover Mini Turbo Nozzle* |
| L. Suction Regulator | X. Allergy Remover Mini Turbo Nozzle* |
| M. Hose | Y. Grand Turbo Nozzle* |
| N. Telescopic Tube Adjuster* | Z1. Parquet Nozzle* |
| O. Telescopic Tube* | Z2. Parquet Extra nozzle* |
| P. Carpet and Floor Nozzle (GP)** | |

GETTING TO KNOW YOUR CLEANER

Remove all components from the packaging.

1. Connect the hose to the cleaner main body. To release the hose: Simply press the two latches on the hose end and pull. [1]
2. Connect the hose handle to the tube upper end. [2]
3. Connect the tube lower end to nozzle**. [3]

USING YOUR CLEANER

1. Extract power cord and plug it into the power supply. Do not pull the cord beyond the red marker. [4]
2. Adjust the telescopic tube to the desired height by moving the telescopic tube adjuster and raise or lower the tube to the most comfortable cleaning position. [5]
3. Carpet & Floor Nozzle **. Press the floor type selector* on the nozzle [6] to select the ideal cleaning mode for the floor type.

Hard Floor – Brushes are lowered to protect the floor.

Carpet – Brushes are raised for the deepest clean.

4. Switch the cleaner on by pressing the On/Off pedal on the cleaner main body. [7]
5. Slide Variable power control to increase or decrease the power. [8]
6. Adjust the suction regulator to the desired level. [9]
7. Switch off at the end of use by pressing the on/off Pedal. Unplug and press the cord reel pedal to wind the power cord back into the cleaner. [10]

PARKING AND STORAGE SECTION

1. The tube can be parked on back or on the bottom of the cleaner for storage or temporary storage while in use. [11]
- 2*. The hose, tube and nozzle can be in "Nano Pack" storage position when not in use: [12]
 - A. Retract the telescopic tube to its storage length.
 - B. Remove the nozzle from the end of the telescopic tube.
 - C. Remove the hose handle from the telescopic tube.
 - D. Lift the hose holder at the rear of the cleaner and wrap the flexible hose around the product.
 - E. Park the hose handle on the product through the handle holder.
 - F. Assemble the nozzle into the parking slot underneath the product.
 - G. Assemble the telescopic tube into the remaining parking slot underneath the product.

CLEANER MAINTENANCE

Replacing the Dust Bag

If the bag check indicator is red please check and, if necessary, replace the bag.

1. Lift the bag door Latch to open the bag door, close the bag to avoid dust escaping by pulling the tongue and remove the bag [13]. The full dust bag should be disposed of correctly and carefully.
2. Fold a new bag as shown on the bag and fit by inserting the collar into the bag holder. [14]
3. Close the Bag door.

REMEMBER: The bag check indicator may be red if an obstruction has occurred. In this case refer to 'Removing a Blockage From the System'.

Cleaning the Filter:

To maintain optimum performance of your cleaner, please wash the pre-motor filter and exhaust filter after each 5 bag changes.

Cleaning the pre-motor filter:

1. Lift the bag door latch to open the bag door.
2. To remove the pre-motor filter slide the pre-motor filter frame from the cleaner. [15]
3. Remove the filter from the holder. [15]
4. Wash it in hand warm water [16], and allow it to dry [17] thoroughly before replacing to the cleaner [18].

Cleaning the exhaust filter:

1. To remove the exhaust filter, open the bag door and remove the filter pack. [19]
2. Wash the filter in hand warm water [16] and allow it to dry [17] thoroughly before replacing to the cleaner. [20]

REMEMBER: Do not use hot water or detergents. In the unlikely event of the filters becoming damaged, fit a Genuine Hoover replacement. Do not try and use the product without a dust bag or filter fitted.

Cleaning the permanent cloth dust bag* (certain models only)

To maintain optimum performance we recommend that you wash the permanent cloth dust bag under hand warm water after every 5 full bags. Remove excess water and leave to dry fully before replacing.

Removing a blockage from the system

If the bag check indicator is red:

1. Check if the bag is full. If so refer to 'Replacing The Dust Bag'.
2. If it is not full, then;
 - A. Do the filters need cleaning? If so refer to 'Cleaning the Filter'.
 - B. Check if there is any other blockage in the system - Use a rod or a pole to remove any blockage from telescopic tube or flexible hose.

WARNING*: - The bag check indicator will remain red if the cleaner is used when the bag is full, if there is a blockage or if the filters are dirty. If used for a period over ten minutes with the bag check indicator red, an electronic cut out will switch the cleaner off to prevent any risk of overheating. If this should happen, switch the cleaner off, unplug and correct the fault (see 'Removing a blockage'). The cut out will automatically reset upon switching the cleaner back on.

ACCESSORIES AND NOZZLES

To obtain the best performance and energy efficiency^{#1} it is recommended that the correct nozzles are used for the main cleaning operations. These nozzles are indicated in the diagrams by the letters **GP**, **HF** or **CA**.

A nozzle type **GP** can be used to clean both carpet and hard floor.

A nozzle type **HF** is suitable for use only on hard floor.

A nozzle of type **CA** is suitable for use only on carpet.

The other nozzles are accessories for specialist cleaning tasks and are recommended for occasional use only.

It is important to note that this vacuum cleaner is supplied with an Energy Label as required by European Regulation (EU) 665/2013.

If the label shows a red prohibition circle on the left covering the carpet symbol, then this indicates that the vacuum cleaner is not suitable use on carpets.

If the label shows a red prohibition circle on the right covering the hard floor symbol, then this indicates that the vacuum cleaner is not suitable for use on hard floors.

#1 NOTE: Dust pick up ability carpet, dust pick up ability hard floor, and energy efficiency in accord with Commission Regulations (EU) 665/2013 and (EU) 666/2013.

The crevice tool*, furniture nozzle* and dusting brush* are stored on board under the accessories door. And they can be fitted to the handle or the end of telescopic tube. [21]

- **Crevice Tool*** – For corners and hard to reach areas. [V1]
- **Dusting Brush*** – For bookshelves, frames, keyboards and other delicate areas. [V2]
- **Furniture Nozzle*** – For soft furnishings and fabrics. [V3]
- **Parquet Nozzle*** – For parquet floors and other delicate floors. [Z1, Z2]
- **Pet Hair Remover Mini Turbo Nozzle*** – Use the mini turbo nozzle on stairs or for deep cleaning on textile surfaces and other hard to clean areas. [W]
- **Allergen Remover Mini Turbo Nozzle*** – Use the mini turbo nozzle on stairs or for deep cleaning on textile surfaces and other hard to clean areas. [X]
- **Grand Turbo Nozzle*** – Use the turbo nozzle for deep cleaning on carpets. [Y]

IMPORTANT: Do not use the grand turbo nozzle or mini turbo nozzles on rugs with long fringes, animal hides and carpet pile deeper than 15mm. Do not keep the nozzle stationary while the brush is rotating.

USER CHECK LIST

Should you have a problem with the product, complete this simple user checklist before calling your local HOOVER service.

- Is there a working electricity supply to the cleaner? Please check with another electrical appliance.
- Is the dust bag over-filled? Please refer to 'Cleaner Maintenance'.
- Is the filter blocked? Please refer to 'Cleaner Maintenance'.
- Is the hose or nozzle blocked? Please refer to 'Removing a blockage from the system'.
- Has the cleaner overheated? If so, it will take approximately 45 minutes for the cut out to automatically reset.

IMPORTANT INFORMATION**HOOVER spares and Consumables**

Always replace parts with genuine HOOVER spares. These are available from your local HOOVER dealer or direct from Hoover. When ordering parts always quote your model number.

Consumables

• Microfiber Bag (x4)	H73	35601375
• Pre-Motor Filter		
• & Exhaust Filter Kit With Bactizero	U68	35601376
• Complete Flexible Hose	D142	35601387
• Carpet & Floor Extra Nozzle	G201EE	35601594
• Carpet & Floor Smart Nozzle	G223SE	35601637
• Hard Floor Extra Nozzle	G208EE	35601601

- Hard Floor Smart Nozzle G203SE 35601596
- Carpet Extra Nozzle G211EE 35601604
- Parquet Extra Nozzle G89PC 35600659
- Pet Hair Remover Nozzle J51 35601163
- Grand Turbo Nozzle J53 35601165

Quality

HOOVER's factories have been independently assessed for quality. Our products are made using a quality system which meets the requirements of ISO 9001.

Your Guarantee

The guarantee conditions for this appliance are as defined by our representative in the country in which it is sold. Details regarding these conditions can be obtained from the dealer from whom the appliance was purchased. The bill of sale or receipt must be produced when making any claim under the terms of this guarantee.

Subject to change without notice.