



# BUSH

## Instruction manual Bush 10.1" Windows tablet





# Table of contents

---

Package contents.....	3
Description of the device.....	4
Getting started.....	8
Microsoft account.....	9
The Windows 8.1 interface.....	10
Connecting to a WiFi network.....	15
Getting familiar with Windows 8.1.....	16
Troubleshooting.....	24



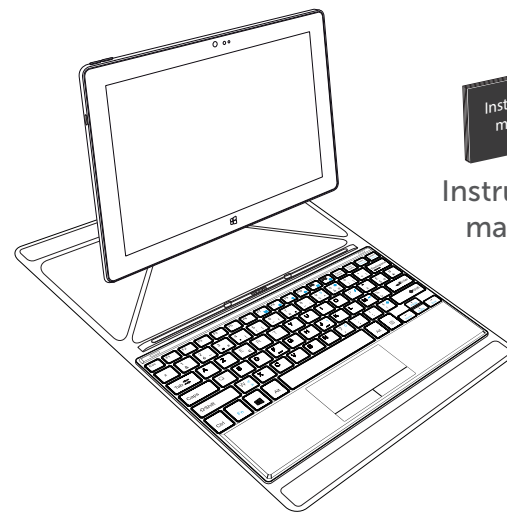


## Package contents

For more information, please consult the FAQs on <http://windows.microsoft.com/en-gb/windows/tutorial>. Make sure to read them before considering any product return.

As we are often updating and improving our products, your device' software may have a slightly different appearance or modified functionality than presented in this manual.

The supplied items are designed only for your device and may not be compatible with other devices. Unapproved accessories may cause your device to malfunction.



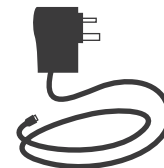
Bush 10.1" Windows tablet, with keyboard and pouch



Instruction manual



Warranty, Legal and Safety Information

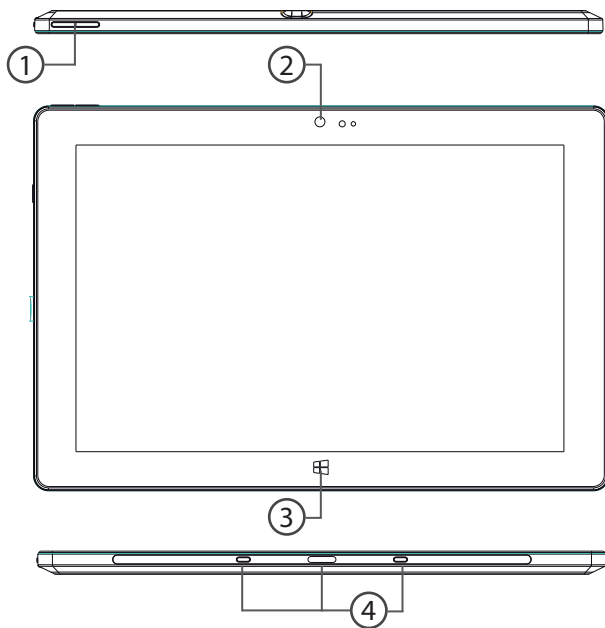


Charger

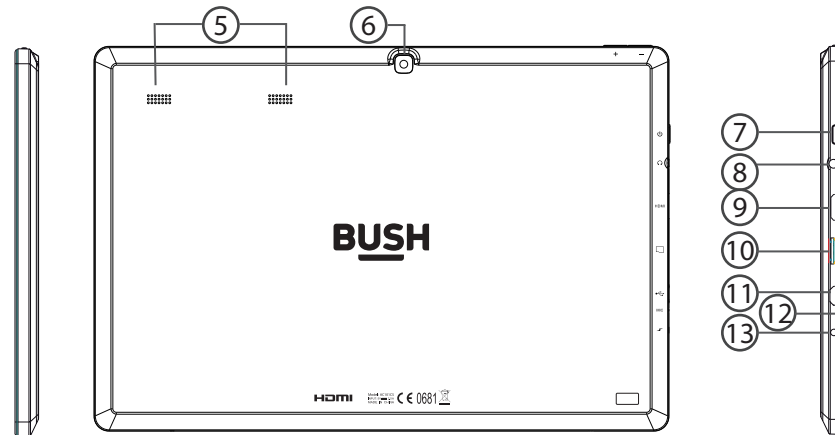




# Description of the device



- ① Volume buttons
- ② Webcam
- ③ Windows button
- ④ Dock-in connectors for keyboard

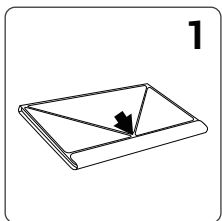


- ⑤ Loudspeakers
- ⑥ Camera
- ⑦ ON/OFF button
- ⑧ Headphone jack
- ⑨ Mini-HDMI port
- ⑩ Micro-SD card slot
- ⑪ Micro-USB port
- ⑫ Microphone
- ⑬ Power connector

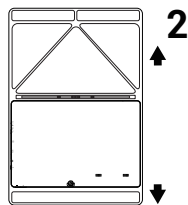




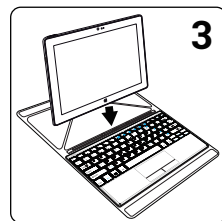
### Keyboard cover assembly



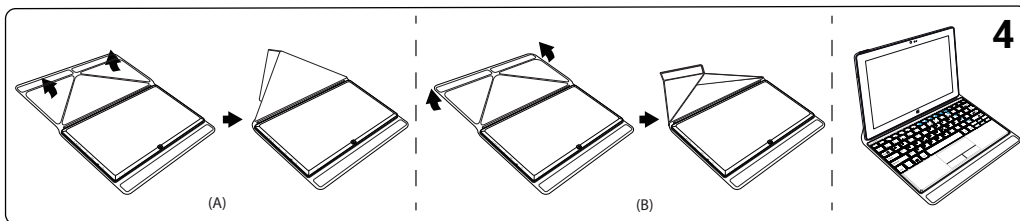
Opening the origami case



Place the tablet on the connectors of the dock-in keyboard



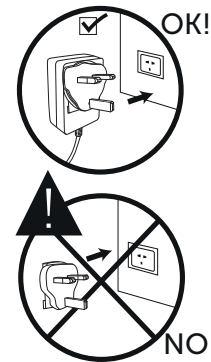
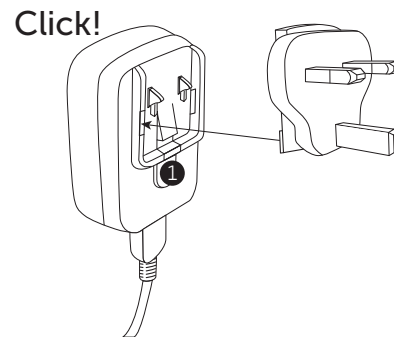
Two types of folding case to support the tablet



### Charger assembly

Assembly: place the plug in the middle of the body and push it down until it 'clicks'.

Disassembly: press button 1 and push it up.





## Getting started

Before you switch on for the first time, ensure that:

1. Your tablet is fully charged
2. You have a good WiFi connection (ideally your usual WiFi zone)
3. You have your WiFi name and password to hand.

### Charging

Connect the supplied power cable to the power connector of the device and to a wall outlet. The charging light will be red until it's fully charged. You can use the device whilst on charge.

### Turning the device on

Press the ON/OFF button for 2-3 seconds.

### Initial setup

The first time you start up your device, the Windows Startup Screen will be the first screen displayed. Follow the on-screen instructions on each screen in order to properly install the operating system. We strongly recommend that you create a Microsoft account, so you can enjoy more features.

## Microsoft account

A Microsoft account is an email address and password that you use to sign in to Windows. It's free and easy to set up, and you can do so with any email address you choose, or get a new email address (for example, you can use an Outlook.com, Gmail, or Yahoo! address for your Microsoft account.). With a Microsoft account, you can:

- get apps from the Windows Store
- back up all your important data and files using free cloud storage
- link your social networking accounts to the People app, and you'll see your friends' contact info and status updates in one place

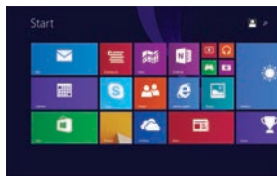
### Signing in with a Microsoft account

Swipe in from the right edge of the screen, tap Settings > Change PC settings > Accounts > Your account > Connect to a Microsoft account. You might be asked to verify your current password.

#### TIP: setting up other accounts

If more than one person uses your tablet, each person should have their own account. They can sign in and personalize the tablet with their own background colors, favorite apps, a separate email inbox, and more. If you have kids, you can also set up a child's account with extra security monitoring measures—with or without email—so that your kids see only what you want them to see on the PC.

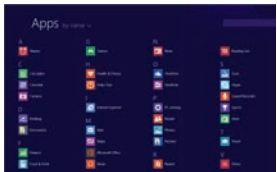
# The Windows 8.1 interface



## Start screen:

The Start screen is the launching pad to access your favourite apps and websites at a touch.

To access this screen, press the Windows button on the side of the tablet, or swipe in from the right edge of the screen and tap Start.

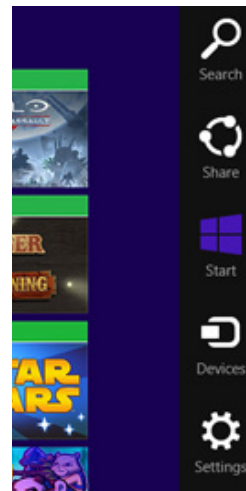


Swipe down to view all your apps.

You can customize your Start screen by swiping down from the edge of the screen for more options. You also have the ability to pin apps, contacts and more to keep them handy. For more information please see 'Getting familiar with Windows' page 16.

## Windows charms

Swipe your finger from the right edge of the screen to the left.



Search the web, within an app, or your tablet for apps, settings, files.

Share items (links, photos...).

This takes you to the Start screen or, if already on the Start screen, returns you to your last app.

Manages your hardware or a quick way to send files and info to other devices connected to your tablet (e.g. printer, phone, projector).

This allows you to have quick access to your tablet's settings (volume, brightness, connecting to the Internet, and more).



## Using two apps side by side

On landscape mode, you can have two apps on a screen at a time. You can schedule meetings on your calendar while you respond to email, or record a lecture in class with Sound Recorder while you take notes in the desktop.



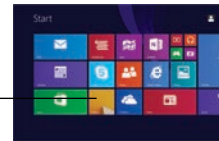
1. Open an app that you'd like to use.
2. Slide in from the top of the screen until an opening appears behind the app, then drag the app to the left or right side.
3. Go back to Start and open a second app. It will appear next to the first app.
4. To resize the apps, drag the divider between the apps.



## Getting back to the desktop

There are a few ways to get back to the desktop from anywhere on your tablet. You can do any of the following:

- Open Start and then tap the desktop tile on the Start screen.



- Swipe in from the right edge of the screen, then tap Search. Enter 'desktop' in the search box, and then tap Desktop in the results.

We have made Windows' parental control available for you from the desktop through the Family Safety shortcut icon. More information on this option page 20.



- Double tap to open icons on your desktop (similar to double right click with a mouse)
- Long-press to open more option (similar to right click with a mouse)






### Turning the device off

In Shut Down Mode, no data will be saved and the tablet will boot to the operating system's main screen the next time it is turned on.

If you have entered data, either save it to the internal storage or to other storage media.

1. Tap the Settings charm. 
2. Tap Power and then select Shut down.

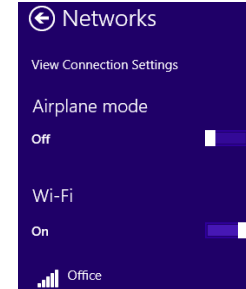
Or press and hold the power button for about 2-10 seconds till the screen 'Slide to shut down your PC' appears and then slide down the screen to shut down the tablet.

## Connecting to a WiFi network

**WARNING:** Make sure that you are in a WiFi zone.

Tap on Settings Windows charm 

On the bottom right corner, tap on the Wifi signal icon 



Make sure the Airplane mode is 'OFF' and the WiFi is 'ON'.

Touch the name of network you want to connect to, tap on Connect and enter a password if required.

### TIPS:

- To get the correct WiFi password (or settings) for the network, contact the WiFi network provider.
- If you want to connect to this network every time it's in range, select the 'Connect automatically' check box.

# Getting familiar with Windows 8.1

## Start screen tiles customisation

### Pinning icons

Press and hold the icon you want to move from your apps list until Pin to start appears. Tap Pin to start to copy the app icon to your Start screen.

### Moving icons

If you want to move it, press and hold it and drag it to where you want it and drop it. Then tap the screen in a blank area to fix it.


### Shrinking and unpinning icons

To shrink an icon, press and hold it and tap on Resize to select from different size options.

## On-screen keyboard

The device has an on-screen keyboard that appears when you need it.

- Tap the screen in a place where text can be entered and the on-screen keyboard should appear.

- If you're in the desktop, tap the keyboard icon  on the desktop taskbar (lower-right corner) to open the on-screen keyboard.

- To manually open the on-screen keyboard (without tapping an area where you can type), open the Settings charm, tap Keyboard > Touch keyboard and handwriting panel.

## Switch between open apps

You can switch between open apps by swiping in from the left edge of the screen. You can keep swiping, and each time you'll switch to another app.

## Lock screen

If you don't use the device for a few minutes, the screen turns off and locks. When this happens, press the Power button, then swipe up on the touch screen.



## Add your email account

1. Tap on the Mail tile from the Start screen.
2. Choose the type of account you want to add, sign-in and then follow the on-screen instructions.



### People: Add contacts

The People app is your universal address book. See contacts from all of your address books in one place, and get the latest updates from your friends. Also, sync contacts from your social networks. Get in touch with someone by sending email, calling, or posting to social media directly from the People app.

1. Tap on the People tile from the Start screen.
2. Choose the type of account you want to add, sign-in and then follow the on-screen instructions.



### OneDrive: Your personal cloud

OneDrive is online storage that comes with your Microsoft account. It's like an extra hard drive that's available from any of the devices you use. When you save your documents, photos, and other files on OneDrive, they're available from any web-connected device (for example, your phone or computer).

1. Tap on the OneDrive tile from the Start screen.
2. Choose the type of account you want to add, sign-in and then follow the on-screen instructions.

### Downloading new apps

You can download many other applications in the Windows Store: search and browse thousands of apps, all grouped into easy to find categories.

### Transferring files to your tablet

From a USB device with a standard male USB connection, you will need to purchase a female USB to micro USB lead in order to connect it (e.g. USB card reader, USB connection from a camera etc.).

With a micro SD card, simply insert the card into the micro SD card slot.

Via e-mail, simply add attachments to e-mail messages and send to your e-mail address.

### Changing languages

Swipe in from the right edge of the screen, tap Settings > Change PC settings > Time and language > Region and language > Add a language. Tap on the language you want to add it to your language list, then Options > Download. The download process might take a while, depending on the size of the language pack.

Tap on Set as primary > Will be display language after next sign-in. Sign out of Windows, then sign back in.



## Family Safety: keeping your kids safer with Windows™ parental control

You can create accounts for your kids and turn on Family Safety monitoring, choose the limits and permissions you want your kids to have on apps, games, websites, and even limit the amount of time they can spend on the device.

To turn on Family Safety, you – or at least one designated parent – need an administrator account; the kids you choose to monitor need a child's or a standard user account.

### To create a new child's account

When you create a new account for your child, Family Safety is turned on automatically.

1. Sign in to your device with an administrator account.
2. Swipe in from the right edge of the screen, tap Settings > Change PC settings > Accounts > Other accounts > Add an account > Add a child's account link.
3. Do one of the following:
  - If your child already has an email address, enter it, tap Next, then follow the instructions.
  - If you want to get a new email address for your child, tap Sign up for a new

email address and follow the instructions.

- If you want your child to sign in to this device only, tap Add a child's account without email, and follow the instructions.

### To turn on Family Safety for an existing child's account

If your child already has a user account on your device, you can still turn on Family Safety and begin monitoring their activities.

1. Swipe in from the right edge of the screen, tap Settings > Change PC settings > Accounts > Other accounts.
2. Select the account you want to monitor with Family Safety, then tap Edit.
3. If your child doesn't have a standard user account, see the previous To create a new child's account steps. In the Account type list, select Child > OK.
4. Family Safety is only activated on the child's account.

To log off the account, from the Start screen on the top-right corner, tap on the account picture, then choose another account from the menu.

To turn off Family Safety for the account, go back to your administrator account. On the desktop, double tap on the Family Safety shortcut icon > Child's account > Off (under Family Safety)

Find more information on <http://windows.microsoft.com/en-gb/windows-8/family-safety>





## Windows updates

The Windows operating system is constantly being updated and enhanced with functional additions and fixes for emerging security issues etc. When Windows asks you to update the operating system it is advised that you do so for your own benefit. When you first get your tablet there may be a large amount of updates that need to be downloaded and run. Please be patient with this update process, it may take a long time to complete.

You may prefer to leave your tablet switched on and connected to power and wifi to allow it to complete these all at once.

To prevent it going to sleep during this process go to Settings (swipe in from the right hand side of the screen, change PC settings, PC and devices, power and sleep. Leave the 'On battery power' setting but change the 'When plugged in, turn off after' settings to never.

Now set update and recovery as follows. Settings (swipe in from the right hand side of the screen, change PC settings, update and recovery, Windows

update. Check now. This will connect you to Microsoft's website and will offer you updates

You can also manage how you receive your updates in this menu option but we recommend that you leave this set to the default 'Install updates automatically'.

## Windows 10

When Windows 10 is ready this may also be offered as a free upgrade to existing Windows users (for a period after its release). This download is going to be huge and is likely to take hours to complete. Disabling sleep in 'on power mode' as shown above, may be useful during this and any other very long download. At the end of the download you will need to restart for the updates to install.





# Troubleshooting

## If your device is frozen:

Press the ON/OFF button for at least 10 seconds to reset.

## If your device doesn't turn on:

Charge your device then switch on normally.

If this does not work, press the ON/OFF button for at least 10 seconds to reset.

## If you want to extend the life of your battery:

Decrease the screen brightness and turn off the wireless connections if not in use.

## If your device is functioning too slowly:

Close all apps which are not currently being used.

## If your WiFi reception is poor:

Make sure you are not far from the WiFi hotspot.

Reset and redefine your connection parameters.

Contact your WiFi connection provider.

We suggest you to upgrade your router to a faster bit rate or to a dual band type if not already. The most common problem with WiFi performance on tablets and computers is poor signal strength and insufficient band width for multiple users from the router.

Check and install Windows updates in Control Panel > System and Security > Windows Update.

If you want to restore your product (erase all your settings? forgotten password?)

1. Tap on Settings Windows charm.

Tap on Change PC settings > Update and recovery > Recovery

From there you can Refresh your PC without affecting your files, or Remove everything and resintall Windows.

This will erase all your settings and applications.

## Recommended Accessories

Female USB to (male) micro USB connector – Very useful for connecting all your standard USB devices like card readers etc. and can be used with the supplied (male) USB to micro USB cable to connect your phone or other micro USB devices.

Mouse – You may find the detail level that Windows 8 offers hard to access without a mouse in some areas. Parts of the O/S such as Control Panel and programs such as spread sheets become far more productive with a mouse. You can adapt a normal mouse by buying a Female USB to micro USB connector or you can use a Bluetooth mouse.

For more information, please consult the FAQs on <http://windows.microsoft.com/en-gb/windows/tutorial>.

# Helpline number: 020 7744 0346





## National restrictions

This device is intended for home and office use in all EU countries (and other countries following the EU directive 1999/5/EC) without any limitation except for the countries mentioned below:

Country	Restriction	Reason/remark
Bulgaria	None	General authorization required for outdoor use and public service
France	Outdoor use limited to 10 mW e.i.r.p. within the band 2454-2483.5 MHz	Military Radiolocation use. Refarming of the 2.4 GHz band has been ongoing in recent years to allow current relaxed regulation. Full implementation planned 2012
Italy	None	If used outside of own premises, general authorization is required.
Luxembourg	None	General authorization required for network and service supply (not for spectrum)
Norway	Implemented	This subsection does not apply for the geographical area within a radius of 20 km from the centre of Ny-Alesund
Russian Federation	None	Only for indoor applications

Note: Frequency 2454-2483.5MHz are restricted to indoor use in France.

Argos declares that this device is in compliance with the essential requirements and other relevant provisions of Directive 1999/5/EC.

A copy of the declaration of conformity can be obtained from:  
Argos Ltd.  
489-499 Avebury Boulevard  
Milton Keynes, MK9 2NW

**CE 0681**



[www.argos.co.uk/bush](http://www.argos.co.uk/bush)

All brands and product names are registered trademarks and the property of their respective owners. Windows Media® and Windows® are trademarks or registered trademarks of Microsoft Corporation in the United States and/or other countries. Specifications are subject to change without notice. Errors or omissions excepted. Images and illustrations may not always match contents. All the information contained in this guide was correct at the time of publication.

Argos Limited © 2015. All rights reserved.

PN: 113821