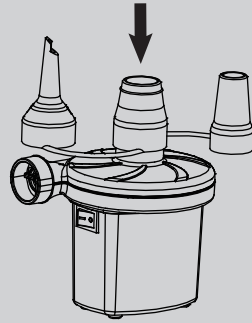


USE INSTRUCTIONS

switch off for stop.(the symbol “-” on the switch means “ON”, “O” means “OFF”)

- * The vavle of inflatable item should not be obstructed. Otherwise, it could overheat and damage the pump.
- * For quickly inflating the item with screw valve, unscrew the safe bolt to deflate directly.



Technical Data

| | |
|------------|-------------------------------|
| Model No | HT-198 |
| Material | ABS |
| Power | 42W (max) |
| Input Volt | AC 230V - 240V or DC 12V |
| Pressure | 0.5PSI (When fully charged) |
| Airflow | 250L/Min (When fully charged) |



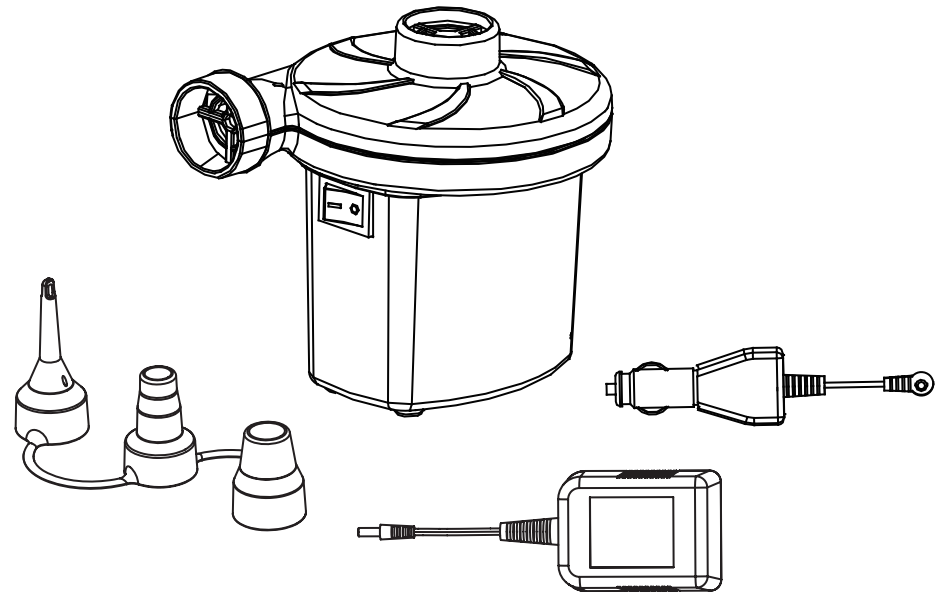
Where possible recycle unwanted materials instead of disposing of them as waste. All parts and packaging should be sorted, taken to a recycling center and disposed of in an environmentally friendly manner.

Guarantor: Argos Limited
489 - 499 Avebury Boulevard
Central Milton Keynes
MK9 2NW

Trespass Rechargeable pump



Read following instructions and warnings before use - Please keep for future reference

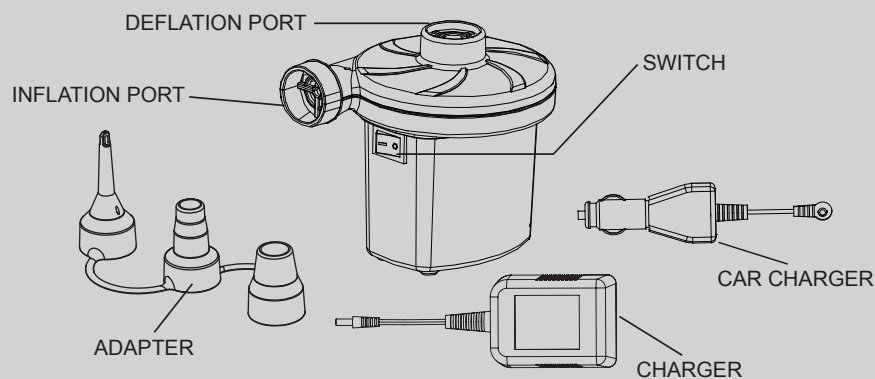


IMPORTANT

1. Read these instructions carefully and familiarise yourself with the procedure before assembling the unit.
2. Check that you have all the component parts following the list on the next page and familiarise yourself with each part before proceeding.

IMPORTANT SAFETY INSTRUCTIONS

Read all instruction before use and keep for future reference.



1 IMPORTANT

- * This pump is intended to inflatable/deflatable items. Such as inflatable toys, air mattress etc. This pump is not designed for continuous use.
- * Keep the air pump out of the reach of children.
- * Do not obstruct the inflation/deflation port and keep them ventilated all the time.
- * For fast inflation and shorten the motor's working time, always use the suitable adapter according to the size of valve of inflatable item.

Running time 10 minutes (inflate Trespas double airbed two times), once fully charged.

2 WARNING

- * To reduce the risk, contact qualified electrician to repair or replace the damaged cord immediately.
- * Carefully follow the instructions on inflatable item when inflating. Never exceed recommended pressure, otherwise, serious injury might be caused by the bursting item.
- * Never leave pump unattended while the pump in use .
- * Do not keep/use the pump in wet condition.
- * Never allow sands, small rocks, etc.to be sucked into inflation /deflation port when using the pump.
- * Never look inside or point the inflation/deflation port toward your eyes when the pump is working.
- * Please charge pump with its original AC/DC charger, otherwise will destroy the pump.

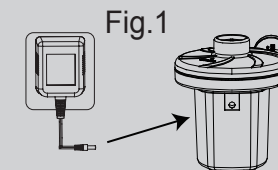
USE INSTRUCTIONS

3 TO CHARGE BATTERY

- * Please take the R E D charger stopper out from the pump before charging and using.
- * Before charging in the initial use,make sure that the battery has been fully discharged.
- * When charging the pump power supply must be 230-240Volt AC or automobile cigarette lighter 12Volt DC.

- For use with the transformer

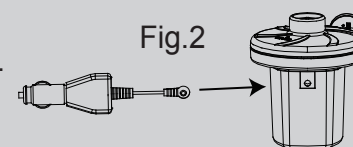
1. Connect the transformer to the pump.(See Fig.1)
2. Insert the transformer into a home socket.
3. It will takes about 10-15 hours to full charge the battery (The battery should be charged for 16 hours for initial use)



- For use with the DC power cord.

1. Insert the DC power cord into the pump's socket. (See Fig.2)

2. Insert the plug into a car cigarette lighter.
3. It will take 2 hours to charge with DC power source.

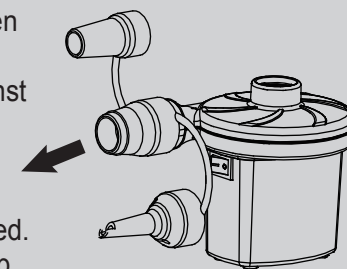


NOTE: Make sure the switch is off before inserting the transformer into socket.

- * Never use the pump when it is being charged.
- * The battery should be recharged immediately after it is discharged.Please do not lay the pump aside without power for a long time.

4 TO INFLATE ITEMS

- * Use the pump directly in which the battery has been fully charged.
- * Join adapter to inflation port, then hold pump against valve of inflatable item and switch on for inflation/ switch off for stop. (The symbol "-" on the switch means "ON", "O" means "OFF")
- * The valve of inflatable item should not be obstructed. Otherwise, it could overheat and damage the pump.
- * On large items like inflatable boat, king-size air mattress, the pump should fit directly to the valve of inflatable item for fast inflation. Use the appropriate adapter for small valve, such as single-size air mattress, etc.



5 TO DEFLATE ITEMS

- * Open the valve of inflatable item.
- * Join adapter to deflation port, then insert it in the valve and switch on for deflation/