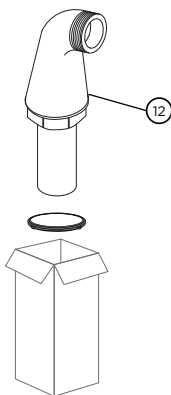
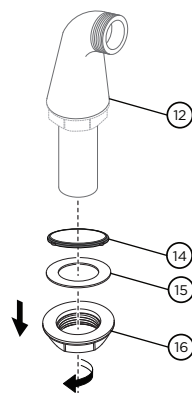


INSTALLATION PROCEDURE

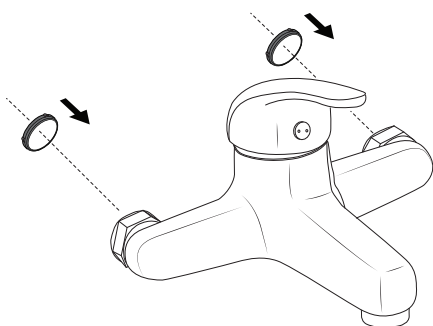
- 1** Take out the bath pillars. Do not mix the two different bath pillars up.



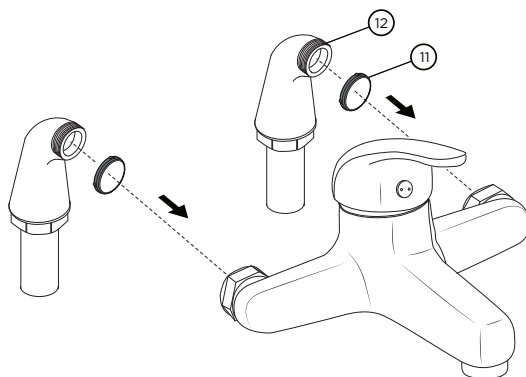
- 2** Remove the backnuts and washers from the bath pillars.



- 3** Fit the washers to the connector.



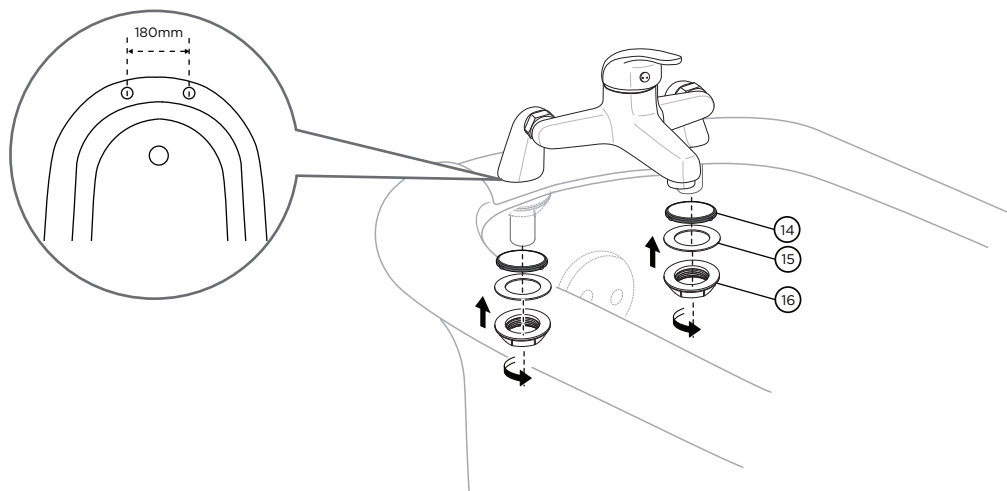
- 4** Tighten the bath pillars to the connectors, ensuring the bath legs are in the right place, HOT & COLD.



INSTALLATION PROCEDURE

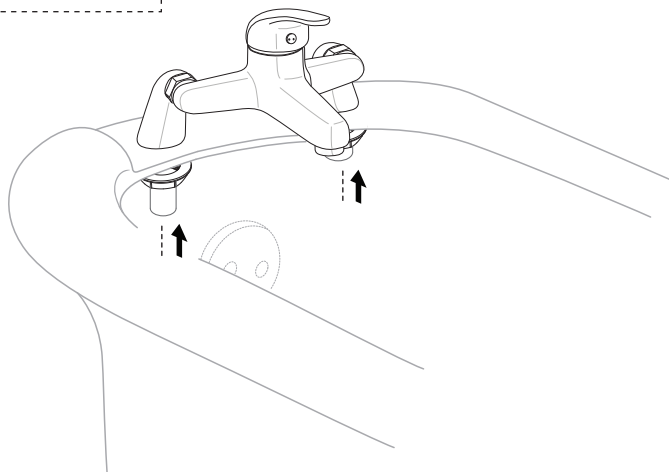
5

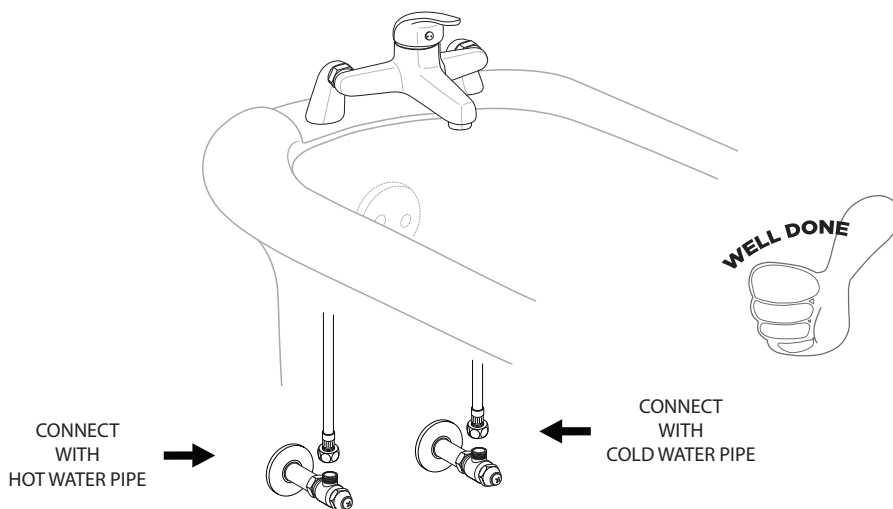
Carefully assemble the mixer on to the bath, ensuring rubber washers are in place at the base.



6

Tighten the backnuts, ensuring equal torque is applied to both nuts.





AFTER INSTALLATION

Ensure that all connections are tight. Ensure that the handle is in the off position. Turn on the drain and main water supply, and check for leaks. Repair as needed.

CARE & CLEANING

Your new tap is designed for years of trouble-free performance. Keep it looking new by cleaning it periodically with mild soap, rinse thoroughly with warm water and dry with a clean, soft cloth. Do not use abrasive cleaners, steel wool or harsh chemicals, as these will dull the finish. Failure to follow these instructions may void your warranty.